

User Manual

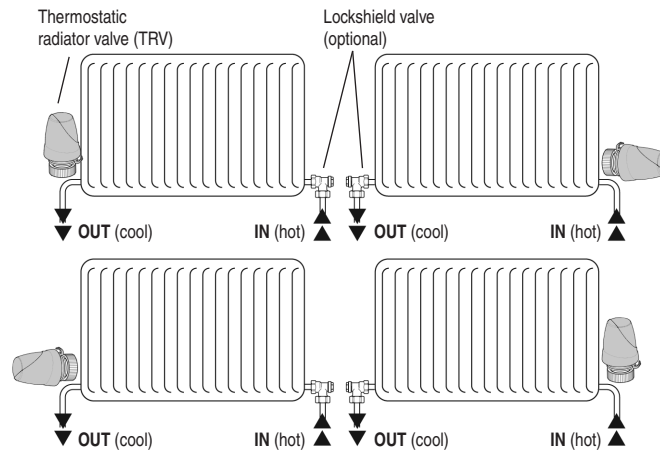
homexpert™
by Honeywell



Thermostatic Radiator Valve

50051974-001 Rev. A

Installation options



The TRV can be installed on either side of the radiator, in a vertical or horizontal position, as shown at left.

If a lockshield valve is also used on the same radiator, install it on the opposite side of the radiator, as shown.

NOTE: If you are not experienced in equipment installation, we recommend that these procedures be done by a professional installer.

ALLOW RADIATOR TO COOL BEFORE INSTALLATION: To avoid injury, turn off boiler or stop hot water flow to radiator and allow it to cool before installation.

What is a thermostatic radiator valve (TRV)?

...an explanation for householders

TRVs sense the air temperature around them and regulate the flow of water through the radiator which they are fitted to. They do not control the boiler.

They should be set at a level that gives you the room temperature you want. These settings may have to be different in each room, and you should set the TRVs to suit each room and then leave them to do their job.

Turning a TRV to a higher setting will not make the room heat up any faster. How quickly the room heats up depends on the boiler size and setting, and the radiator size. Turning the TRV to a lower setting will result in the

room being controlled at a lower temperature, and saves energy.

TRVs need a free flow of air to sense the temperature, so they must not be covered by curtains or blocked by furniture.

TRVs cannot turn off the boiler when the whole house is warm. To do that, you will need a room thermostat as well. The radiator in the room with the room thermostat should normally have a TRV, but, if it does, keep the TRV on the maximum setting and adjust the room thermostat as explained with the instructions.



This manual applies to the following homexpert™ by Honeywell products

TRV15AHC: Angled TRV Kit — Chrome

TRV15SHC: Straight TRV Kit — Chrome

TRV15AHW: Angled TRV Kit — White

TRV15SHW: Straight TRV Kit — White

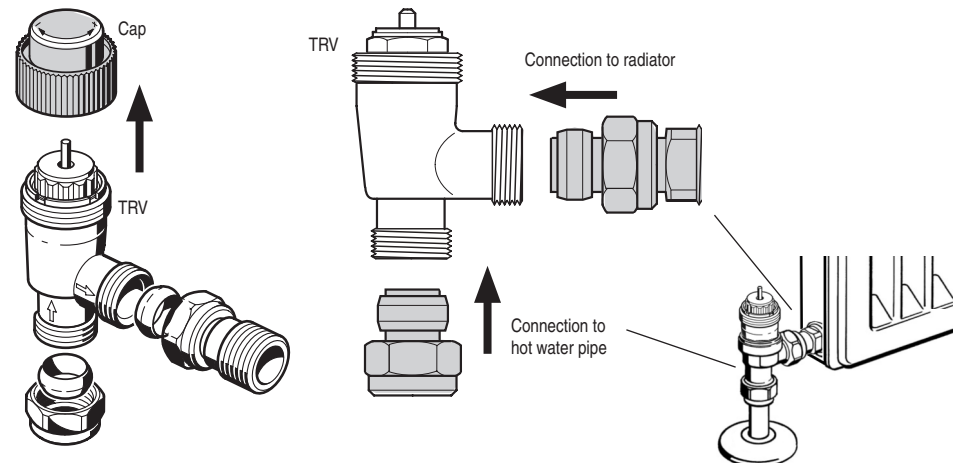
TRV15AHWC: Angled TRV Kit — Chrome & White

TRV15SHWC: Straight TRV Kit — Chrome & White



Valve installation

Remove protective cap and connect fittings to radiator and hot water source as shown below. If necessary, cut supplied copper tubes to an entry depth of 10 mm into the TRV to ensure a secure connection.

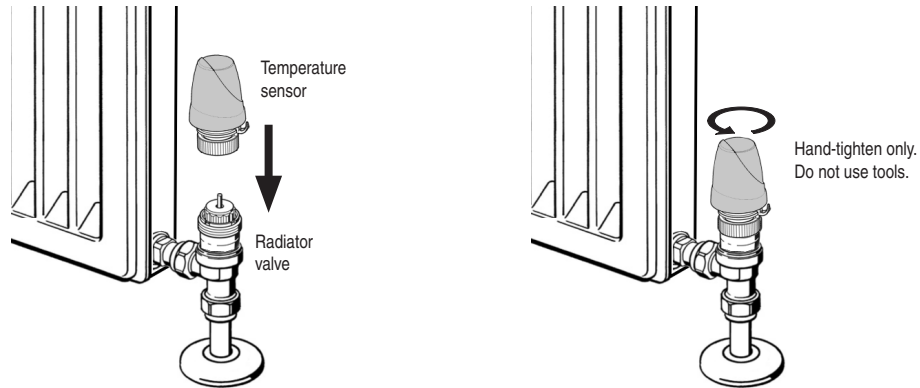


NOTE: Keep the protective cap. You can remove the thermostat sensor (see next page) and screw the cap back into place to prevent water overflow if you must remove the radiator later.

Sensor installation

Check all fittings to make sure connections are secure before installing the thermostat sensor. Center the sensor over the radiator valve, push down and screw firmly into place as shown below.

After installation, set the sensor to an appropriate temperature level, then turn on the boiler or open valves as needed to resume hot water flow to the radiator. Watch carefully to check for leaks. If leaks occur, stop hot water flow to the radiator immediately and check all fittings.



i **NOTE:** To ensure accurate temperature control, make sure the TRV is exposed to a free flow of room air, and is not blocked by draperies or furniture.

Limited warranty

Honeywell warrants this product for 1 year from date of purchase. We undertake to replace or repair at our discretion, products should they become defective within 1 year solely as a result of faulty materials and or workmanship.

Understandably if the product has not been installed or maintained in accordance with Honeywell's instructions, has not been used appropriately or if any attempt has been made to rectify, dismantle or alter the product in any way the warranty will be invalidated.

This product warranty states Honeywell's entire liability. It does not extend to cover consequential loss or

damage or installation costs arising from a defective product.

If the product is defective, please return it together with a proof of purchase or receipt to the place of purchase.

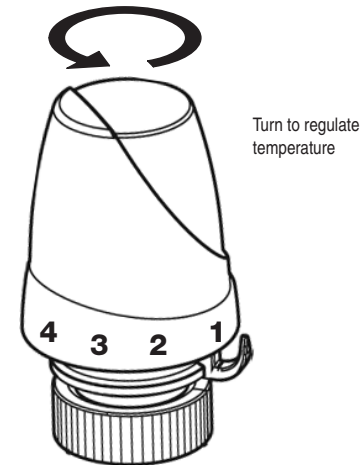
This does not affect your statutory rights.

If you require further information about this product, call the homexpert™ by Honeywell technical helpline on 0845 604 2893.

For a full list of terms and conditions please visit www.homexpertbyhoneywell.com.

Temperature control

Turn the sensor to control temperature at each radiator fitted with a TRV. Settings are marked with numbers rather than temperatures, because heating systems vary. An approximate guide follows, below. You may have to adjust the sensor for a day or two, to get the proper setting for the temperature you prefer.



- 0 1° C (potential hazard of freezing)
- * 6° C (frost protection level)
- 1 12° C
- 2 16° C
- 3 20° C
- 4 24° C
- 5 28° C

i **NOTE:** Temperatures listed above are estimates based on typical performance after vertical mounting. Temperatures may vary by 1° to 2° C if the TRV is installed in other positions.

Honeywell

The Arnold Centre
Paycocke Road
Basildon, Essex
SS14 3EA

Technical Help Desk: 0845 604 2893
www.homexpertbyhoneywell.com

50051974-001 Rev. A

© 2010 Honeywell International Inc

homexpert™ by Honeywell is a trademark of Honeywell International Inc. All rights reserved.

homexpert™
by Honeywell

Free Manuals Download Website

<http://myh66.com>

<http://usermanuals.us>

<http://www.somanuals.com>

<http://www.4manuals.cc>

<http://www.manual-lib.com>

<http://www.404manual.com>

<http://www.luxmanual.com>

<http://aubethermostatmanual.com>

Golf course search by state

<http://golfingnear.com>

Email search by domain

<http://emailbydomain.com>

Auto manuals search

<http://auto.somanuals.com>

TV manuals search

<http://tv.somanuals.com>