

# **RASplus (Remote Administration System)**

**Digital Video Recorder Software**

## **User Guide**

## Revisions

Issue	Date	Revisions
A	09/09	New document based on 900.0857 rev 6.00 with updates for V1.4.4 to include HRXDS.
B	09/09	On <i>page 12</i> , updated p/n of HRSD user guide and corrected HRXDS16 model name.
C	11/09	Updated back cover

# Contents

- About This Document . . . . . 11**
  - Overview of Contents . . . . . 11
  - Related Documents . . . . . 11
- 1 Overview . . . . . 13**
  - Features . . . . . 13
  - Product Information . . . . . 14
    - Package Components . . . . . 14
    - System Requirements . . . . . 14
- 2 Installation . . . . . 15**
  - Installing RASplus . . . . . 15
- 3 Configuration . . . . . 21**
  - RASplus Viewing Screen . . . . . 22
  - RASplus Panel. . . . . 24
    - Remote Sites Panel . . . . . 25
    - Favorite Sites Panel . . . . . 26
    - Status View Panel . . . . . 27
    - Search View Panel. . . . . 28
    - Map Panel . . . . . 28
    - Color, PTZ, and Alarm Out Control Panels . . . . . 31
    - Image Processing Panel. . . . . 32
    - Emergency Event View Panel . . . . . 32
    - Watch Event View Panel. . . . . 33
    - Report View Panel . . . . . 34
  - RASplus Menus . . . . . 34
    - System Menu . . . . . 35
    - View Menu . . . . . 49
    - Remote Menu . . . . . 50
    - Favorite Menu . . . . . 51
    - Sequence Menu . . . . . 52
    - Record Menu . . . . . 52
    - Image Menu . . . . . 53
    - Layout Menu . . . . . 53
    - Help Menu . . . . . 56
  - Toolbar . . . . . 56
- 4 Operation . . . . . 59**
  - Live Monitoring . . . . . 59
    - Screen Layout and Frame Layout. . . . . 60

## Contents

Audio Communication . . . . .	60
Sequence Monitoring . . . . .	61
Playback and Search . . . . .	64
Search View Panel . . . . .	65
Search Mode . . . . .	66
Additional Functions . . . . .	70
Additional Functions . . . . .	75
Panic Recording . . . . .	77
Status View . . . . .	78
Function Buttons . . . . .	79
Status Display Window . . . . .	80
<b>Appendix A     Video Clips Review . . . . .</b>	<b>81</b>
MiniBank Player . . . . .	81
Clip Player . . . . .	83
<b>Appendix B     DVR Name Service (DVRNS) . . . . .</b>	<b>89</b>
System Configuration . . . . .	89
<b>Appendix C     Map Editor . . . . .</b>	<b>91</b>
Background Image Setting . . . . .	92
Option Menu . . . . .	92
Device Setting . . . . .	95
Link Setting . . . . .	98

# Figures

Figure 2-1	Select Installation Folder . . . . .	16
Figure 2-2	Welcome to RASplus Setup Wizard . . . . .	16
Figure 2-3	RASplus Ready to Install . . . . .	17
Figure 2-4	Run RASplus Automatically Option . . . . .	17
Figure 2-5	RASplus Language Option . . . . .	18
Figure 2-6	RASplus Exit Setup . . . . .	18
Figure 2-7	Welcome to MSXML Setup Wizard . . . . .	19
Figure 2-8	MSXML End-User License Agreement . . . . .	19
Figure 2-9	MSXML Customer Information . . . . .	19
Figure 2-10	MSXML Choose Setup Type . . . . .	20
Figure 2-11	MSXML Exit Setup . . . . .	20
Figure 3-1	RASplus Viewing Screen . . . . .	22
Figure 3-2	Four Position Arrow Icon . . . . .	25
Figure 3-3	Four Position Arrow with Tab Icon . . . . .	25
Figure 3-4	Remote Sites Panel . . . . .	25
Figure 3-5	Favorite Sites Panel . . . . .	26
Figure 3-6	Status View Panel . . . . .	27
Figure 3-7	Search View Panel . . . . .	28
Figure 3-8	Map Panel . . . . .	28
Figure 3-9	Map Image . . . . .	29
Figure 3-10	Map Popup Options Menu . . . . .	30
Figure 3-11	Color, PTZ and Alarm Out Control Panels . . . . .	31
Figure 3-12	Image Processing Panel . . . . .	32
Figure 3-13	Emergency Event View Panel . . . . .	32
Figure 3-14	Watch Event View Panel . . . . .	33
Figure 3-15	Report View Panel . . . . .	34
Figure 3-16	RASplus Menu Bar . . . . .	34
Figure 3-17	System Menu . . . . .	35
Figure 3-18	Setup Screen — System 1 . . . . .	35
Figure 3-19	Drawing Mode Screen . . . . .	36
Figure 3-20	Recording Mode Setup Screen . . . . .	38
Figure 3-21	Setup Screen — System 2 . . . . .	39
Figure 3-22	Event Setup Screen . . . . .	40

## Figures

Figure 3-23	Screen Setup — Remote Sites . . . . .	41
Figure 3-24	Add Site Screen . . . . .	41
Figure 3-25	Setup Screen — Favorite Sites . . . . .	43
Figure 3-26	Setup Screen — Sequence Sites . . . . .	45
Figure 3-27	Batch Job Setup Screen — Upgrade . . . . .	46
Figure 3-28	Batch Job Setup Screen . . . . .	47
Figure 3-29	Log Setup Screen . . . . .	48
Figure 3-30	View Menu . . . . .	49
Figure 3-31	Remote Menu . . . . .	50
Figure 3-32	Remote System/Event Log . . . . .	51
Figure 3-33	Favorite Menu . . . . .	52
Figure 3-34	Sequence Menu . . . . .	52
Figure 3-35	Record Menu . . . . .	52
Figure 3-36	Image Menu . . . . .	53
Figure 3-37	Layout Menu . . . . .	53
Figure 3-38	Screen Layout . . . . .	54
Figure 3-39	Frame Layout . . . . .	54
Figure 3-40	Layout Load . . . . .	55
Figure 3-41	Layout Setup . . . . .	55
Figure 3-42	RASplus Toolbars . . . . .	56
Figure 3-43	RASplus Controls Toolbar . . . . .	56
Figure 3-44	Screen Layout Toolbar . . . . .	56
Figure 3-45	Frame Layout Toolbar . . . . .	57
Figure 4-1	Watch Search Screen Selection . . . . .	60
Figure 4-2	Screen Layout Toolbar . . . . .	60
Figure 4-3	Audio Communication Menu . . . . .	61
Figure 4-4	Select Audio Channel Dialog Box . . . . .	61
Figure 4-5	Color Controls . . . . .	62
Figure 4-6	PTZ Controls . . . . .	63
Figure 4-7	Alarm Out Controls . . . . .	63
Figure 4-8	Watch Search Screen Selection . . . . .	64
Figure 4-9	Search View Panel . . . . .	65
Figure 4-10	Time-Lapse Search Screen . . . . .	66
Figure 4-11	Selecting a Video Segment . . . . .	67
Figure 4-12	Event Search Panel . . . . .	68
Figure 4-13	Event Search Dialog Box . . . . .	68
Figure 4-14	Event Search Text-In Dialog Box . . . . .	68
Figure 4-15	Text-In Event Search Dialog Box . . . . .	70
Figure 4-16	Search Data Source Screen . . . . .	71
Figure 4-17	Screen Format Toolbar . . . . .	71
Figure 4-18	Image Processing Panel . . . . .	71
Figure 4-19	Save Type Screen . . . . .	72
Figure 4-20	Save As Self-Player . . . . .	73

## Figures

Figure 4-21	Save As Video Screen . . . . .	74
Figure 4-22	Camera Popup Menu. . . . .	75
Figure 4-23	Status View Panel . . . . .	78
Figure A-1	MiniBank Self Player User Interface . . . . .	82
Figure A-2	Clip Player User Interface . . . . .	84
Figure A-3	Clip Player Menu . . . . .	85
Figure A-4	Save Clip Images Menu . . . . .	86
Figure B-1	DVRNS Server System Configuration . . . . .	89
Figure C-1	Map Editor . . . . .	91
Figure C-2	Property [Canvas] Tab . . . . .	92
Figure C-3	Option Menu . . . . .	92
Figure C-4	Site Information Window . . . . .	92
Figure C-5	Site Item Window . . . . .	93
Figure C-6	Popup Dwell Time Dialog Box . . . . .	93
Figure C-7	Status Color Window . . . . .	94
Figure C-8	Name Table Window . . . . .	95
Figure C-9	Property [Camera/AlarmOut/AlarmIn] Tab. . . . .	95
Figure C-10	Event [Camera] Tab . . . . .	97
Figure C-11	Event [AlarmOut] Tab . . . . .	97
Figure C-12	Event [AlarmIn] Tab . . . . .	97
Figure C-13	Property [Link] Tab . . . . .	98

## Figures



## Tables

Table 4-1	Camera Popup Menu Options . . . . .	76
Table A-1	Clip Player Menu Functions . . . . .	85
Table 4-5	Save Clip Images Options. . . . .	86
Table C-1	Property Tab Device Information . . . . .	95
Table C-2	Property Tab Device Information . . . . .	98



# About This Document

This document introduces the Remote Administration System Plus (RASplus) software designed for the digital video recorder (DVR) and describes the procedures for operating and maintaining the software.

---

## Overview of Contents

---

This document contains the following chapters and appendices:

- *Chapter 1, Overview*, describes the Remote Administration System and lists its features.
- *Chapter 2, Installation*, provides the procedures necessary to install RASplus.
- *Chapter 3, Configuration*, covers the configurations and settings available with RASplus.
- *Chapter 4, Operation*, provides the procedures necessary for RASplus operation.
- *Appendix A, Video Clips Review*, covers the functions and features of the MiniBank Self Player program.
- *Appendix B, DVR Name Service (DVRNS)*, explains how to set up a remote DVR using a DVRNS server.
- *Appendix C, Map Editor*, describes the map editor and its features.

---

## Related Documents

---

For more information about topics that are relevant to the subject of this manual, see the documents listed below.

Document title	Part number
<i>HRXD9, HRXD16 DVR User Guide</i>	<i>900.0856</i>
<i>DVRNS Server for DVRs User Guide</i>	<i>800-05057</i>

<b>Document title(cont'd)</b>	<b>Part number</b>
<i>HRSD4 DVR User Guide</i>	<i>800-00919</i>
<i>HRSD8, HRSD16 DVR User Guide</i>	<i>800-03650</i>
<i>HRXDS8, HRXDS16 DVR User Guide</i>	<i>800-04559</i>

# Overview

This manual describes the installation and operation of RASplus (Remote Administration System Plus) software, which is designed to be used with remote digital video recorders (DVRs).

---

## Features

---

RASplus is an integrated software program that controls system management, video monitoring, video recording, and image playback of multiple remotely connected sites. RASplus offers the following features:

- Checks and reports status of remote DVRs
- Notification of events detected at remote sites
- Remote monitoring of live camera images
- One-touch panic recording of currently displayed images
- Time-lapse and event searching of recorded images
- Remote software upgrades and system programming
- View system and event log information of remote DVRs
- Remote monitoring of multiple remote sites using 3D maps
- Connect up to 64 remote sites (up to 16 remote sites for remote search) at a time

---

**Note** This product includes software developed by the OpenSSL Project for use in the OpenSSL Toolkit (<http://openssl.org/>).

---

---

## Product Information

---

### Package Components

- RASplus User Guide (this document)
- Multilingual RASplus Software and User Guide (RASplus CD-ROM)
- DVRNS Server Software and User Guide (RASplus CD-ROM)

### System Requirements

Playing back digital video puts a high demand on your computer system. To use the RASplus video monitoring and playback functions, your personal computer (PC) must meet the minimum system requirements listed below:

- Operating System: Microsoft Windows XP x86 (32 Bit) or Microsoft Windows Vista x86 (32 Bit)
- CPU: Intel Pentium IV (Celeron) 2.4 GHz or faster
- RAM: 512 MB or higher
- VGA: AGP, Video RAM 8 MB or higher (1024x768, 24 bpp or higher)

# Installation

---

## Installing RASplus

---

---

**Caution** If an older version of RASplus has already been installed on your computer, you should uninstall the older version before installing the new one.

---

---

**Note** In the Start menu in Windows, go to your Control Panel. Double-click **Power Options** to open the Management Properties dialog box. Under the **Power Schemes** tab, set both Turn off monitor and Turn off hard disks to **Never**.

---

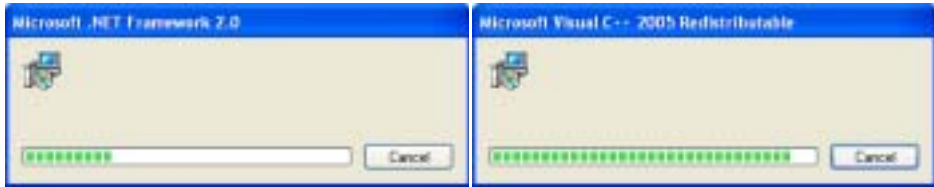
---

**Note** The **User Account Control** window might appear when using the Microsoft Windows Vista operating system. Click **Allow** and install RASplus software following the instructions.

---

1. Insert the installation CD.
2. Run the **Setup.exe** file.

3. The .NET Framework and the Visual C++ Runtime Libraries are installed automatically.



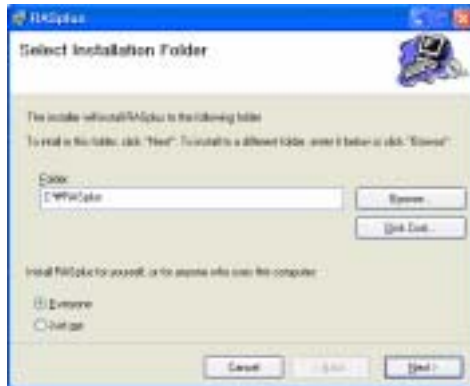
---

**Note** Installing .NET Framework and the Visual C++ Runtime Libraries is required for RASplus to operate properly. This installation step will be skipped if they are already installed on your computer.

---

4. Designate the folder path to install RASplus and select the user(s) who can use RASplus, then click **Next**.

**Figure 2-1** Select Installation Folder



5. When *Figure 2-2* appears, click **Next**.

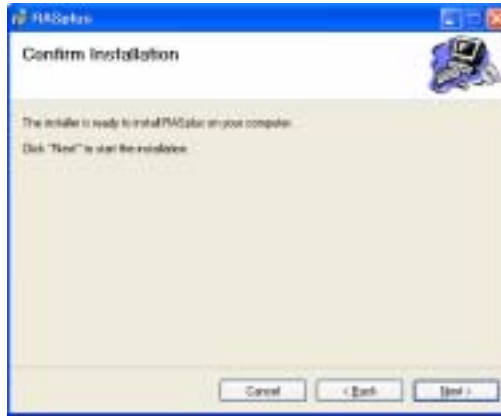
**Figure 2-2** Welcome to RASplus Setup Wizard





6. Click **Next**.

**Figure 2-3 RASplus Ready to Install**



7. Select whether or not to run RASplus automatically when logging onto Windows, and then click **Next**.

**Figure 2-4 Run RASplus Automatically Option**



8. Set the language option by selecting either **Select language when starting RASplus** or **Always start RASplus using the language below**. If you select to Always start RASplus using the language below, select the desired startup language from the list of available languages and then click **OK**.

**Figure 2-5 RASplus Language Option**



---

**Note** To properly display the selected language, your PC's operating system should be set up to support the selected language.

---

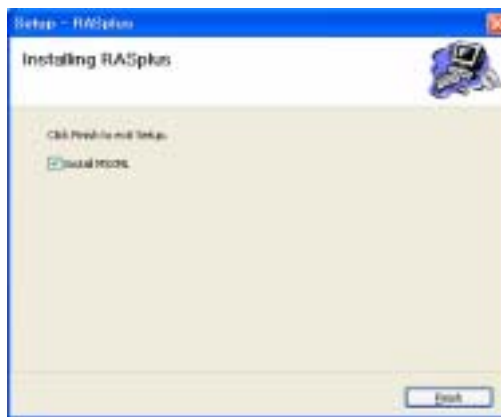
---

**Note** To change RASplus' language after selecting the **Always start RASplus using the language below** option, the RASplus software must be re-installed.

---

9. When *Figure 2-6* appears after finishing the RASplus installation, select the **Install MSXML** check box and click **Finish**. Installing the MSXML application is required for RASplus to initiate.

**Figure 2-6 RASplus Exit Setup**



10. Click **Next**.

**Figure 2-7 Welcome to MSXML Setup Wizard**



11. Select **I accept the terms in the License Agreement**, and click **Next**.

**Figure 2-8 MSXML End-User License Agreement**



12. Enter a **User Name** and **Organization**, and click **Next**.

**Figure 2-9 MSXML Customer Information**



13. Select **Install Now**.

**Figure 2-10 MSXML Choose Setup Type**




14. Click **Finish** to complete the MSXML installation.

**Figure 2-11 MSXML Exit Setup**



## Configuration

After installing the RASplus software, the RASplus shortcut icon () is on your desktop. Double-click the icon to run the RASplus program. The RASplus program consists of the viewing screen, 12 docking panels, menus and toolbar.

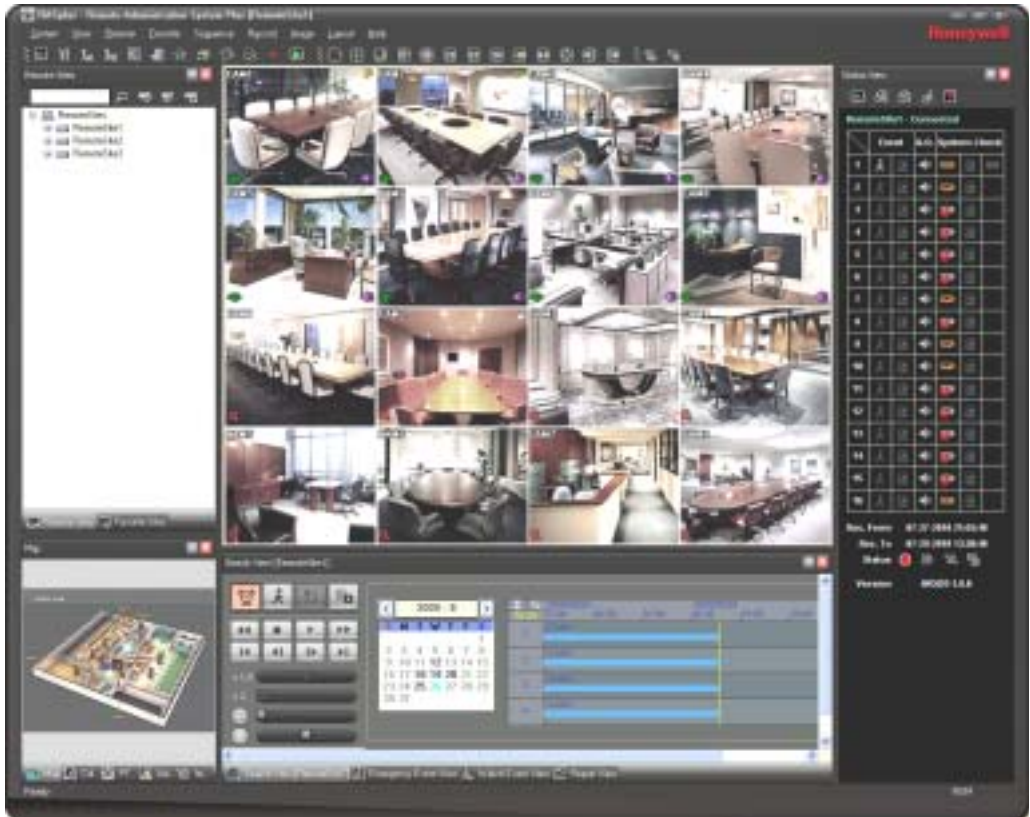
---

**Note** Some panels do not display on the screen in the default frame layout. To display those panels, go to the **View** menu at the top of the screen, then select each panel from the menu.

---

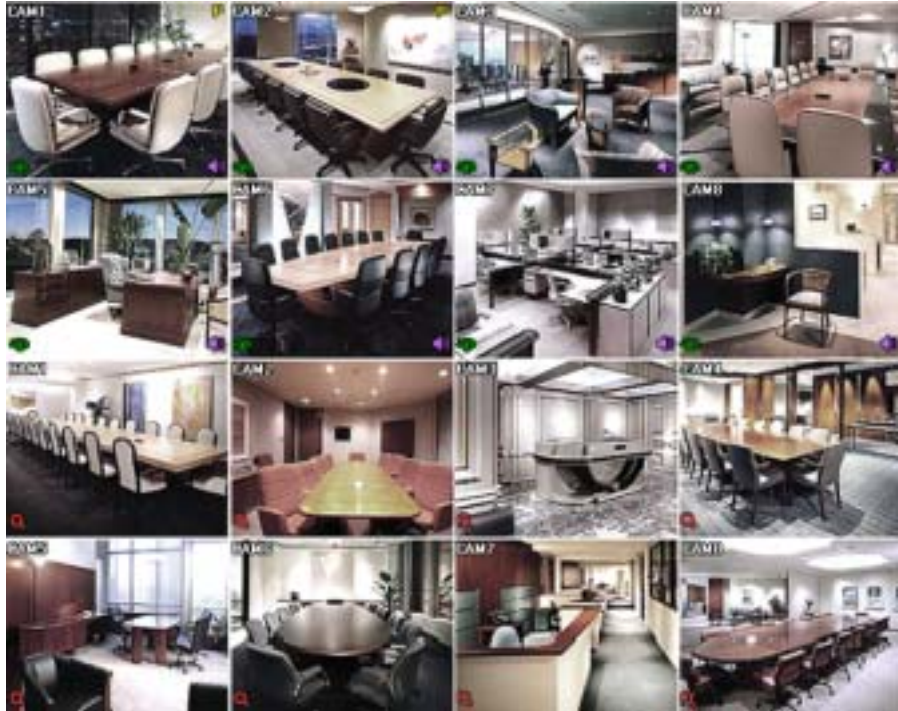
# RASplus Viewing Screen

Figure 3-1 RASplus Viewing Screen



## Configuration

The Viewing screen displays images from selected cameras in live monitoring or playback mode. RASplus provides various multi-screen layouts; single-screen, quad, 1+7, 3x3, 4x4, 5x5, 1+32, 6x6, 7x7, 8x8 and full-screen.



---

**Note** In the event that screen updates are slow when using the Microsoft Windows Vista operating system, try disabling the AutoTuning capability of your computer. This might resolve the problem.

---

### Disabling Auto Tuning on your Computer

Run the Command prompt with elevated administrator permissions.

1. Go to the **Start** menu ► **Accessories** ► **Command Prompt**.
2. Right-click the mouse button and select the **Run as administrator** option.
3. Enter **netsh int tcp set global autotuninglevel=disable** and click **Ok**.
4. Restart your computer to apply the changes.

### Enabling Auto Tuning on your Computer

Run the Command prompt with elevated administrator permissions.


1. Go to the **Start** menu ► **Accessories** ► **Command Prompt**.
2. Right-click the mouse button and select the **Run as administrator** option.
3. Enter `netsh int tcp set global autotuninglevel=normal`.
4. Restart your computer to apply the changes.


---


## RASplus Panel

---

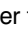

RASplus has many powerful tools that can be used to streamline your work. Most of the tools are located on 12 docking panels that can be placed on the screen where they are most convenient. You can keep your screen free of clutter by displaying only the panels you use most frequently.

Click  in the upper right corner of a panel to enable the auto-hide feature. Tabs for auto-hidden panels are displayed on the side of the screen.


Scrolling over an auto-hidden panel tab will cause the panel to fly out. You can cause the panel to lock back into its original display position by clicking .

Click  to hide the panel without a tab. Hidden panels can be displayed by selecting them from the drop-down menus.

Panels can be resized, moved, and combined with other panels to create a workspace that fits your needs. To resize a panel:

1. Scroll the cursor over the edge of the panel until the cursor changes to  or .
2. Then click the left mouse button and drag the panel border to enlarge or reduce its size.

To move a panel to a different position on the screen:

1. Scroll the cursor over the title bar of the panel until it changes to . Once you click and drag, position arrows will display on the screen.

The four position arrows along the outer edges allow you to place the panel along the given edge independent of the other panels.

2. When you drag the panel over a position arrow, a transparent blue box will display showing the new panel position.
3. If you are satisfied with the position, release the left mouse button and the panel will move to its new position.

You can also move a panel so that it is associated with another panel:

1. Drag the panel over the panel you want it associated with, and the icon with four position arrows will center over that panel.




**Figure 3-2 Four Position Arrow Icon**



2. Scrolling the cursor over the icon arrows will cause a transparent blue box to display where the panel will be located.
3. If you are satisfied with the position, release the left mouse button and the panel moves to its new position.

It is possible to combine panels so that they take up less space on the screen. Combined panels have a row of tabs across the bottom. Clicking a tab brings that panel to the foreground. To combine panels:

1. Move the cursor to the title bar of the panel you want to move.
2. Click and drag the panel onto the panel you want to combine it with. If they can be combined, the four-position arrow icon will have a tab symbol in the center.
3. Drag the cursor over the tab symbol , and a new tab appears on the panel.
4. Release the mouse button to combine the panels.

**Figure 3-3 Four Position Arrow with Tab Icon**





The layout possibilities are virtually unlimited. With a little experimentation you will be able to lay out the RASplus screen so that it best meets your requirements.

## Remote Sites Panel

**Figure 3-4 Remote Sites Panel**



The **Remote Sites** panel displays a list of remote sites registered during RASplus System setup and a list of installed cameras at each remote site. To find the remote site easily in the Remote Sites list, enter the site name in the query box, and click .

Click  to register the remote site.

Click  to remove the selected remote site from the list

Click  to edit the site information of the selected remote site.

### To connect to a remote site:

1. Select the site or camera you want to connect to from the list.
2. Drag and drop the site or camera in the desired position on the screen or the Status View panel.
3. The screen displays images from selected cameras, and the Status View panel displays the system status information of the connected remote site.

For an alternate way to connect to the Status View Panel:

1. Select a site from the list and click the right mouse button.
2. Select **Connect Status View** from the popup menu.

This popup menu initiates the remote including **Remote Setup**, **Remote System Log**, and **Remote Event Log**. See *Remote Menu*, page 50, for more details.

## Favorite Sites Panel

Figure 3-5 Favorite Sites Panel



The **Favorite Sites** panel displays the list of Favorite sites registered during RASplus System setup. Selecting the Favorite site you want to connect to from the list and then dragging and dropping it in the desired position on the screen automatically connects all the remote sites registered in the Favorite site.

## Status View Panel

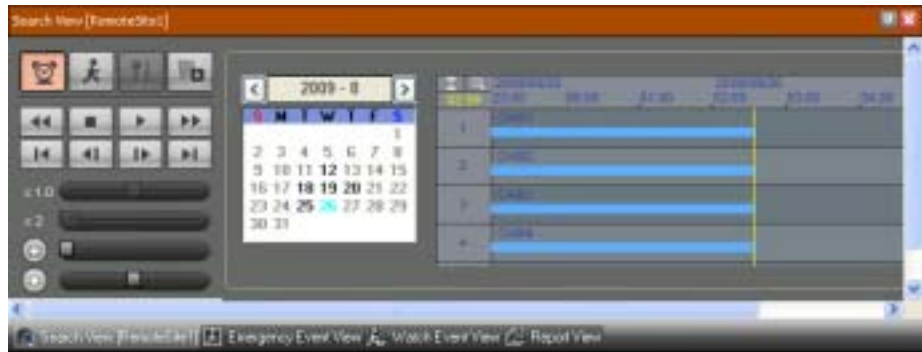
Figure 3-6 Status View Panel



The **Status View** panel displays the event, alarm out, system check and recording status information of the connected remote site in real-time. To connect to the remote site, select the site or camera you want to connect to from the Remote Site or Map panel and then drag and drop it into the Status View panel. See [Status View](#), page 78, for more information about the Status View panel.

## Search View Panel

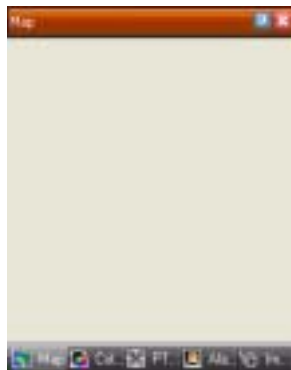
Figure 3-7 Search View Panel



Use the Search View panel to perform time-lapse or event searching of recorded data on the remote DVR. See *Search Mode*, page 66, for more information.

## Map Panel

Figure 3-8 Map Panel



The **Map** panel allows for efficient monitoring of the remote sites by displaying a three-dimensional map of the selectable site:

1. Click the right mouse button on the map panel to select the map image file (. rmp) you want to monitor from the list. The selected map image displays in the Map panel and the sites registered on the map image file will be connected.
2. When the selected map is linked with sub-maps, click the linked image to move to the sub-map.

**Figure 3-9** Map Image



---

**Note** See *Appendix C, Map Editor* for instructions for editing maps.

---

The Map panel pops up another screen when alarm-in, motion or video loss events are detected or when you click the device icon according to the Map Editor settings.

To change the popup screen location and/or size:

- Click the left mouse button on the screen and drag it to where you want it located.
- Click the right mouse button on the popup screen to display *Figure 3-10*. Select one of the following options:

**Figure 3-10 Map Popup Options Menu**



- **x0.25 to x2:** Sets the desired size of the Map popup screen.
- **Full Screen:** Enters the full-screen mode of the Map popup screen.
- **Transparency...:** Adjusts the transparency of the popup screen.
- **PTZ Set...:** Controls pan, tilt and zoom of the selected PTZ camera.
- **Disable Time Out:** Continues to display the popup screen when events are detected by disabling the Dwell Time Out.
- **Original Ratio:** Displays the Map popup screen in its original aspect ratio.
- **Antialiasing Screen:** Enhances image display quality on the popup screen by eliminating staircase (aliasing) effects on the enlarged image.
- **User Set...:** Sets the mode of the current popup screens displayed on the monitor. For example, the monitor displays the current popup screen with enough frames for 16 cameras when you select **4x4**.

---

**Note** See *Device Setting* on page 95 for more information about the popup function.

---



## Connecting to a Remote Site

To connect to the remote site:

1. Select the device you want to connect to from the **Map** panel.
2. Drag and drop it in the desired position on the screen or the **Status View** panel.

## Checking the Device Status

Place the mouse cursor on the device on the map to display the device status. When the device detects any event or the device is not working properly, the following status icons appear (maximum of 4).

	Unplugged		Motion
	Event off		Alarm In
	Irregular		Alarm Out
	Video Loss		

---

**Note** The device status displays as **Irregular** based on the system check settings and as **Video Loss, Motion, Alarm, and/or Alarm Out** according to the event detection settings on the remote DVR.

---

## Watch Event View

1. Click the right mouse button on the **Map** panel to open a text menu screen.
2. Select **Watch Event View** from the menu to display the event information for the connected remote sites.
3. Select **Close** to disconnect the current connection on the Map panel.

## Color, PTZ, and Alarm Out Control Panels

These three panels in *Figure 3-11* allow color control, PTZ control and alarm out control while live monitoring a remote site. See *Live Monitoring* on page 59 for more details.

**Figure 3-11** Color, PTZ and Alarm Out Control Panels



## Image Processing Panel

Figure 3-12 Image Processing Panel



The **Image Processing** panel allows you to enhance played back images. See *Playback and Search* on page 64 for more details.

## Emergency Event View Panel

Figure 3-13 Emergency Event View Panel

A screenshot of a software window titled "Emergency Event View". The window displays a table with three columns: "Site", "Event", and "Date/Time". The table contains several rows of data, each representing an event from a specific site. The "Site" column lists "RemoteSite1" and "RemoteSite2". The "Event" column lists "CAM2", "CAM1", "CAM8", "CAM7", "CAM3", "CAM11", "CAM10", "CAM12", and "CAM7". The "Date/Time" column shows timestamps such as "07-29-2010 13:40:04", "07-29-2010 13:40:04", "07-29-2010 13:45:55", "07-29-2010 13:45:48", "07-29-2010 13:45:48", "07-29-2010 13:45:48", "07-29-2010 13:45:13", "07-29-2010 13:44:57", "07-29-2010 13:44:57", and "07-29-2010 13:44:57". The window also has a search bar and a "Page: 1/1" indicator at the bottom.

The **Emergency Event View** panel displays a list of events (preset for notification at the remote site) that were called from individual remote sites (LAN connection only).

### Connecting to a Remote Site

Select an event from the list, then drag and drop it in the desired position on the **Watch** or **Search** screen to connect to the remote site. A check mark appears in the box at left.

### Viewing Tooltips

Select an event or site from the list, then click the right mouse button. A tooltip appears which contains the emergency event instructions from the remote site.



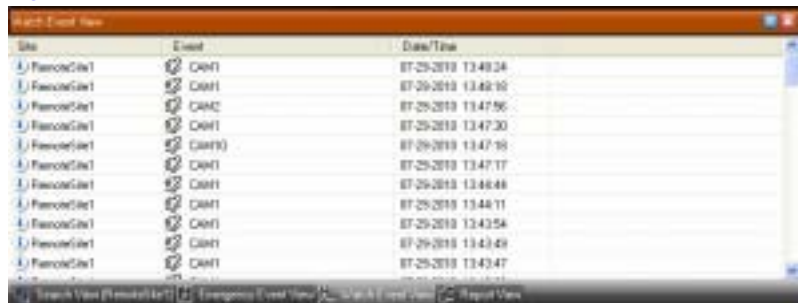
---

**Note** The Emergency Event View function is available only for the remote sites that were set to notify the RASplus system when configuring each event setup.

---

## Watch Event View Panel

**Figure 3-14 Watch Event View Panel**



The **Watch Event View** panel displays events detected at individual remote sites while RASplus is in the live monitoring mode. The description of event icons is as follows:

	Alarm In On		Disk Bad
	Alarm In Off		Disk Full
	Motion Detection		Disk Temperature
	Video Loss		Panic Recording On
	Text In		Panic Recording Off
	v		Fan Error On
	Recorder Bad		Fan Error Off
	Disk S.M.A.R.T.		

---

**Note** Some event icons might not be supported, depending on the specifications and version of the remote DVR.

---

## Report View Panel

**Figure 3-15 Report View Panel**

Date	Site	Camera	Alerts	Record	Record Check	Record Period
07-30-2009 15:42:52	RemoteSite1					
07-30-2009 15:42:52	RemoteSite1	178.7	Net Use	On	Off	07-21-2009 11:44:59 ~ 07-30-2009 15:46:31
07-30-2009 15:42:49	RemoteSite1	172.1.3.18	Net Use	On	Off	07-27-2009 22:12:42 ~ 07-29-2009 13:46:40

The **Report View** panel displays the system status information of remote sites. RASplus checks the remote site and reports system status. Report Setup must be configured during RASplus System setup for this feature to function. See *System Menu* on page 35 for more details.

Click  to reload the data.

Click  to print the report.

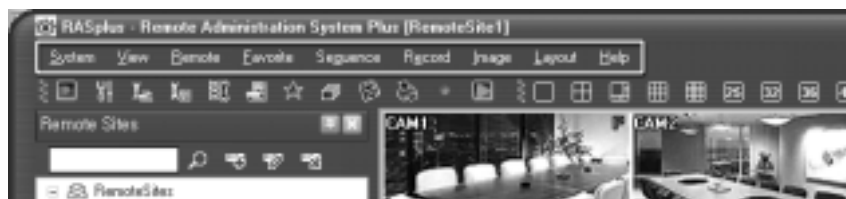
---

**Note** Some report options may not be supported, depending on the specifications of the remote DVR.

---

## RASplus Menus

**Figure 3-16 RASplus Menu Bar**



## System Menu

Figure 3-17 System Menu



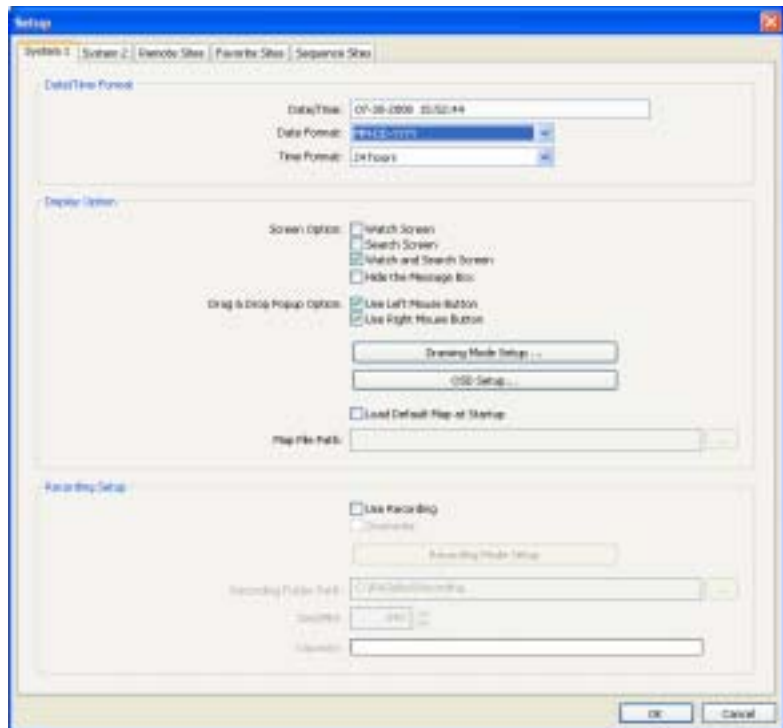
## Setup

The **Setup** screen allows setting up the system operation and remote site configuration.

### System 1 Tab

Set up the date/time format for RASplus, display options, and panic recording function.

Figure 3-18 Setup Screen — System 1



**Date/Time Format** Select the date/time format.

**Display Option** Set up the screen display, drag & drop popup option, display acceleration and OSD.

- **Screen Option:** Select **Watch Screen** to use RASplus for live monitoring only, **Search Screen** to use RASplus for searching only, or **Watch and Search Screen** to use RASplus for both live monitoring and searching. Select **Hide the Message Box** to hide the message box that displays the status information about RASplus and remote site connections.
- **Drag & Drop Popup Option:** Select which mouse button will be used when displaying popup menu screens from **Use Left Mouse Button**, **Use Right Mouse Button** or both (**Watch and Search Screen** mode only).
- **Drawing Mode Setup...:** Set up the display options for the screen.

**Figure 3-19 Drawing Mode Screen**



- **Normal Drawing:** Depends on the CPU performance of your PC and displays images in low speed (Dib Draw Mode).
- **Fast Drawing (Default):** Displays images in normal speed (Direct Draw Mode).
- **Fast Drawing (YUV420/RGB32):** Depends on the performance of the video card installed in your PC and displays images in high speed (Direct Draw Mode).
- **Overlay Drawing (YUV420/RGB32/RGB565):** Displays images in high speed (Direct Draw Overlay Mode).
- **Deinterlacing:** Enhances image display quality for interlaced video by eliminating horizontal scan lines and noise in areas with motion.
- **Aspect Ratio:** Enhances the image display quality on the screen by eliminating the stair-stepping (aliasing) effects in the enlarged image. Select **Fit to Screen** to fit the display images to the screen size. Select **Original Ratio** to keep the ratio of the display images while fitting them within the screen size.
- **Anti-Aliasing Screen:** When activated, the anti-aliasing screen option enhances the image display quality by eliminating the stair-stepping (aliasing) effects in the enlarged image.

---

**Note** If the image cannot be displayed properly because of your PC's specifications, lower the drawing mode level.

---

---

**Note** While in the **Fast Drawing** mode, the drawing speed might decrease when the RASplus screen is not located on the primary monitor.

---

---

**Note** The **Overlay Drawing** mode may not be supported, depending on the type of video card installed in your PC. Video cards with an ATI chipset are recommended.

---

---

**Note** When using dual monitors, select **Overlay Drawing** to display the image only on the primary monitor.

---

---

**Note** With some computers, the image drawing speed might decrease while using a deinterlace filter, depending on the type of deinterlace filter.

---

---

**Note** With some computers, the image drawing speed might decrease when the Anti-Aliasing Screen option is selected.

---

- **OSD Setup...:** Select options (Title, Time Info, Date Info, Text-In and Overlay Text-In Data) to display on the screen.
- **Load Default Map at Startup:** Select whether or not the user-defined map file is loaded automatically when RASplus starts, and designate the path of the map file (.rmp) to load.

**Recording Setup** Set up the use (On or Off) of the panic recording function and overwriting option of the recording folder (On or Off). When using the panic recording function and overwriting option, RASplus continues recording when the hard disk drive

is full by overwriting the oldest video. Designate a recording folder path and set the recording folder size from 640 MB to 2048 MB. **Capacity** shows the remaining space of the recording folder.

---

**Note** The recording folder size cannot be changed once it has been set. Designate another recording folder path if you want to expand the recording space.

---

- **Recording Mode Setup...**: Set up the panic recording mode.

**Figure 3-20 Recording Mode Setup Screen**




- **Visible Watch Camera**: Records camera channels currently displayed on the Watch screen.
- **User Assignment Setup**: Record camera channels assigned by the user on the Watch screen.
- **Camera Range Setup**: Records camera channels within preset channel range. Select the boxes beside **Camera** and adjust camera range up to 16 channels.

---

**Note** Panic recording will NOT be made for the cameras not currently displayed on the Watch screen even though they are set up to be recorded.

---

---

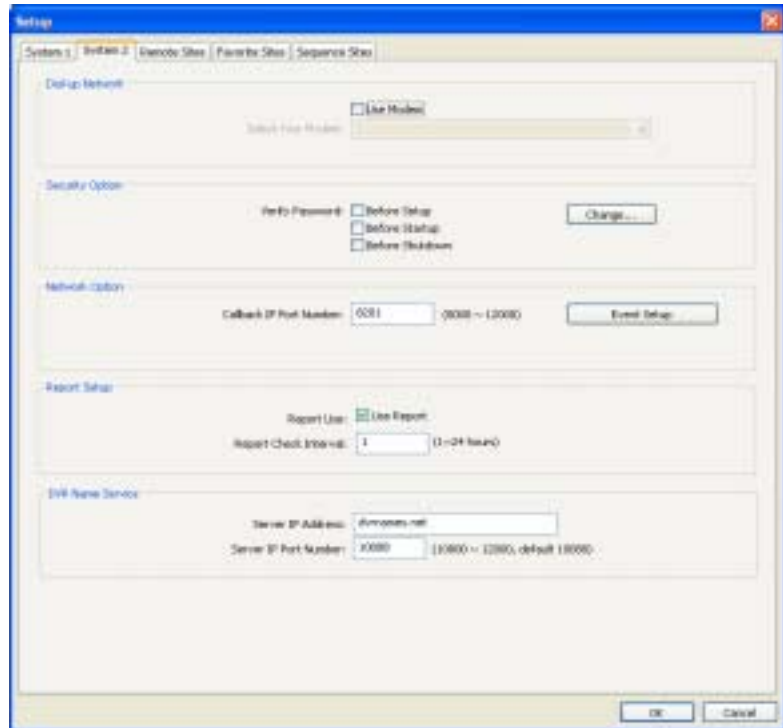
**Note** When selecting the **User Assignment Setup** mode, the user can manually assign camera channels to record on the Watch screen. Select a camera on the Watch screen and click the right mouse button, then select **Select Record Camera** in the text menu screen. The gray  icon displays on the selected camera screen.

---

## System 2 Tab

Set up the modem connection information for remote access, system password, network option, report function and DVRNS server.

**Figure 3-21 Setup Screen — System 2**



**Dial-up Network** Select **Use Modem** if you want to use a modem for remote access.

**Security Option** Designate whether password confirmation is required **Before Setup**, **Before Startup**, or **Before Shutdown** of RASplus. Click **Change** to change the password.

**Network Option** Set up the IP port number (from 8000 to 12000) that is used for network connection when receiving a callback message from a remote site.

---

**Note** The IP port number you enter should match the value set during the network setup of the remote DVR.

---

**Event Setup** Enter the number of emergency events that are displayed in the Emergency Event panel. Set up RASplus to sound when events are detected by selecting events from the list and designating the sound file (.wave) path. You can set up a different sound for each type of event.

**Figure 3-22 Event Setup Screen**



**Report Setup** Set up the use (On or Off) and check intervals (from 1 to 24 hours) of the report function. When using the report function, RASplus checks on the remote site based on the user-defined interval and reports system status.

**DVR Name Service** Set up the IP address and port number (from 10000 to 12000) of the DVRNS (DVR Name Service) server. The IP address and port number you enter should match the values set during the DVRNS setup of the remote DVR you want to connect to.

---

**Note** The DVRNS server cannot be configured when using modem connections. See *Appendix B, DVR Name Service (DVRNS)* for more details on DVR Name Service.

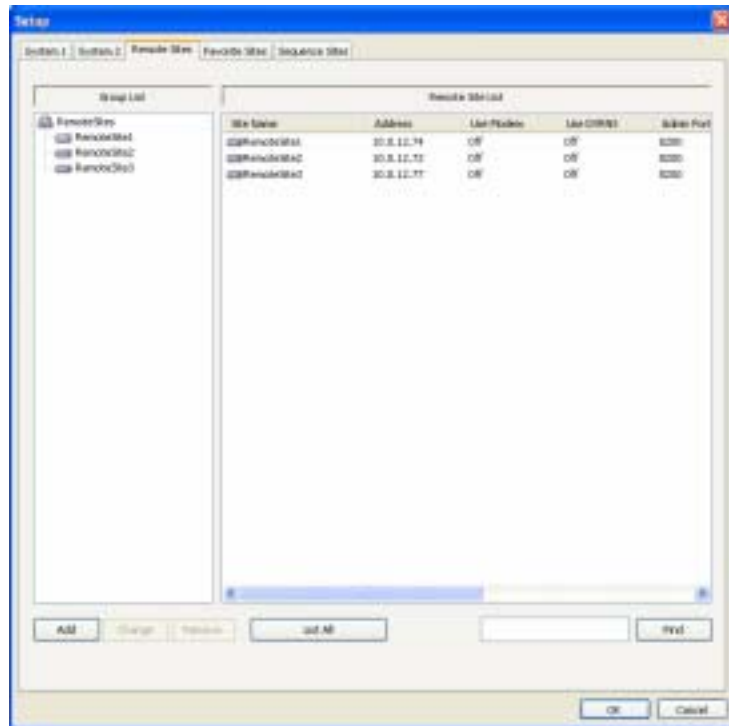
---

### Remote Sites Tab

Configures the connection list for remote access.



**Figure 3-23 Screen Setup — Remote Sites**



**Add** Click **Add** and enter the information about the remote site you want to add.

**Figure 3-24 Add Site Screen**



- **Reference Group:** The site should be assigned to a **Reference Group** for effective management of multiple remote sites. Click **Add** to create a new reference group.
- **Remote Site Setup:** Enter a site name and the IP address of the remote site (modem telephone number for dial-up connections), acquired from your network administrator. Click **Port** to set up the IP port number of each program. The IP port number should match the value set during the network setup of the remote DVR. If the remote system version does not allow you to set the IP port numbers,

use the following values: **8200** for **Admin**, **8016** for **Watch**, **10019** for **Search**, and **8116** for **Audio**. Select the number of cameras at the remote site. For example, selecting **8** from the list when registering a 16-channel DVR displays video of the first 8 channels on the screen.

---

**Note** When using DVRNS server, place a checkmark in the **Use DVRNS** box. The IP Address field will be changed to **DVR Name**, and then you can enter the name of the remote site registered on the DVRNS server. The DVR name you enter should match the name set during the DVRNS setup of the remote DVR.

---

- **Login Setup:** Enter the user ID and password of the remote site to be accessed. If you have entered a user ID and a password, the site will be connected automatically without a dialog box requesting a password. Select **No Password** for remote systems that do not require a password (for example, guest login).

---

**Note** Up to 32 characters may be used for the site names, telephone numbers and user IDs. Up to 8 characters may be used for passwords.

---

**Emergency Event Instruction** Enter the message that displays when emergency events are called in from the remote site. The Emergency Event Instruction can be checked by clicking the right mouse button after selecting the event or the site from the list in the Emergency Event panel.

**Change** Select the group or site you want to edit and click **Change**, or double-click the group or the site to change. Edit the site information.

**Remove** Select the group or site you want to remove and click **Remove**.

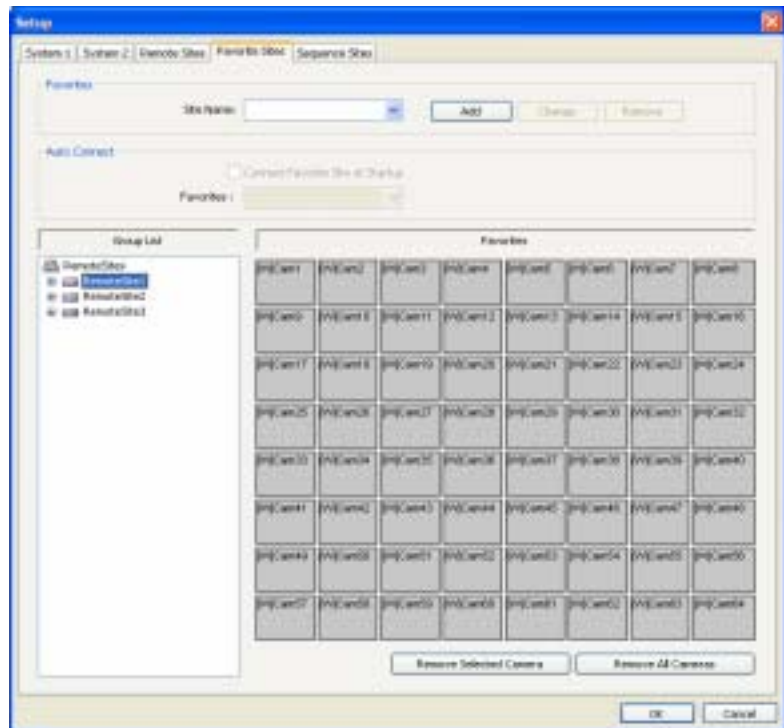
**List All** Displays all registered remote sites.

**Find** Enter the group or site name to search for and click **Find** to display the matching groups or sites in the list.

### Favorite Sites Tab

The **Favorite Site** is a user-defined connection list that combines more than one remote site so that multiple sites can be monitored at the same time with a single connection. Add a new Favorite Site and define it by dragging and dropping sites and/or cameras to the Favorites map. Up to 64 cameras can be monitored at a time when each camera is assigned to its own position on the Favorites map.

**Figure 3-25 Setup Screen — Favorite Sites**



**Site Name** Select a registered Favorite site from the drop-down list.

**Add** Adds a new Favorite site.

**Change** Select the Favorite site to change from the Site Name list and click **Change**. Then change the site name or screen layout.

**Remove** Select the Favorite site to remove from the Site Name list and click **Remove**.

**Connect Favorite Site at Startup** Select whether or not your favorite site is automatically connected when RASplus starts.

**Remove Selected Camera** Removes selected cameras from the Favorites map. Cameras can also be removed by clicking the right mouse button after selecting the camera.

**Remove All Cameras** Removes all cameras from the Favorites map.

---

**Note** Cameras can be selected by clicking the left mouse button on the camera in the Favorites map. Selected cameras will be outlined in red. Clicking the left mouse button on the camera while holding the **Ctrl** key toggles camera selection On and Off. Multiple cameras can be selected by clicking the left mouse button while holding the **Shift** key.


---

---

**Note** [W] (Watch Screen) and [S] (Search Screen) displayed to the left of the camera number indicates the display option of each camera. The display option can be selected when registering a Favorite site. Selecting the remote site from the Group List and dragging and dropping it to the Favorites map using the right or left mouse buttons (this is user-defined and must be set during system setup) displays the text menu screen. Select the desired displays option between **Watch Screen** and **Search Screen**. If you do not select the display option, Watch Screen display will be assigned to all cameras of the registered Favorite site by default.

---

---

**Note** Click  on the toolbar to save the current screen layout of the Watch screen or Search screen directly to the Favorite site.

---

---

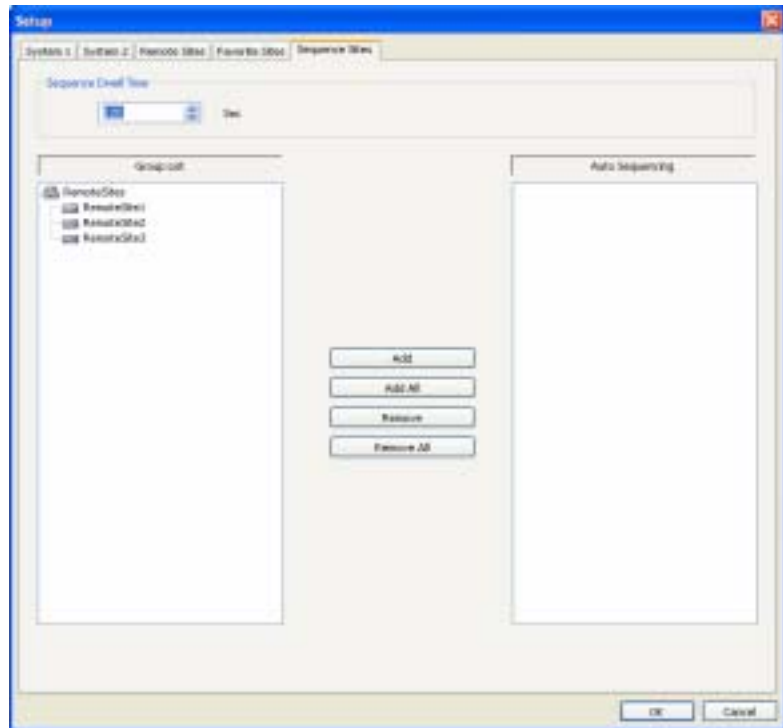
**Note** The Favorite Site list does not function with modem connections.

---

### Sequence Site Tab

Configure the sequenced sites. RASplus connects to the registered sites sequentially allowing connection to more than one remote site.

**Figure 3-26 Setup Screen — Sequence Sites**



**Sequence Dwell Time** Adjust sequence intervals (from 5 seconds to 1 hour) for each connection.

**Add** Select the site to add from the Group List and click **Add**.

**Add All** Adds all sites in the Group List to the Auto Sequencing list.

**Remove** Select the site to remove from the Auto Sequencing list and click **Remove**.


**Remove All** Removes all sites in the Auto Sequencing list.

---


**Note** The Auto Sequencing list is not valid with modem connections.

---

### Load Setup File

Allows applying the settings of the System Setup menu saved as an .xml file format to the RASplus system. Click  on the toolbar.

## Save Setup File

Saves the current settings of the System Setup menu as an .xml file format. Click  on the toolbar.

## Batch Job Setup

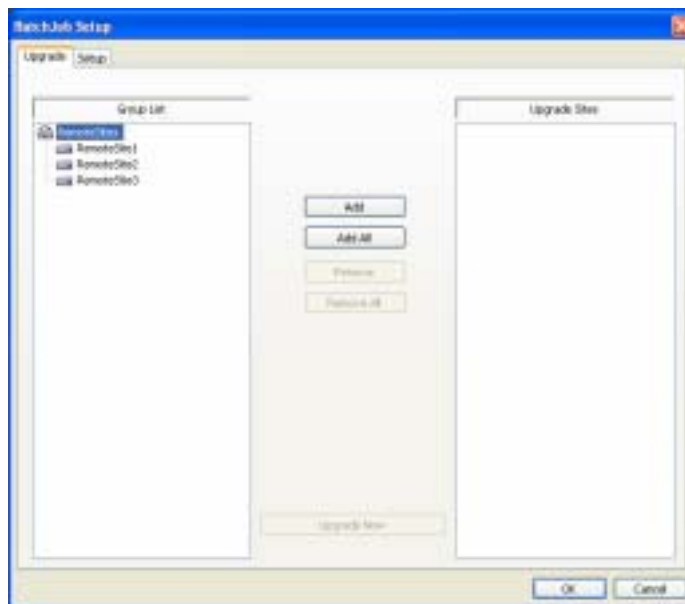
Multiple DVRs can be upgraded or set up using the Batch Job Setup screen.

### Upgrade Tab

Sets up the remote upgrade job for remote sites.

1. Select the remote sites to upgrade from the Group List, and add them to the Upgrade Sites list by clicking **Add**.
2. Click **Upgrade Now** to initiate the remote upgrade job for registered Upgrade Sites.

**Figure 3-27** Batch Job Setup Screen — Upgrade



**Add** Select the site to add from the Group List and click **Add**.

**Add All** Adds all sites in the Group List to the Upgrade Sites list.

**Remove** Select the site to remove from the Upgrade Sites list and click **Remove**.

**Remove All** Removes all sites in the Upgrade Sites list.

**Upgrade Now** Upgrades the software on the listed Upgrade Sites.

## Setup Tab

Sets up the remote setup job for remote sites.

1. Select a remote site to set up from the Group List, and add it to the Setup Sites list by clicking **Add**.
2. Click **Setup Now** to initiate the remote setup job for registered Setup Sites.

**Figure 3-28 Batch Job Setup Screen**




**Add** Select the site to add from the Group List and click **Add**.

**Remove All** Removes a site in the Setup Sites list.

**Setup Now** Performs the setup on the listed Setup Sites.

## Disconnect

Disconnects all current connections. You can also click  on the toolbar.

## View Log

Displays log information saved in the RASplus system.

---

**Note** You can also display the Log Viewer screen by selecting **Log Viewer** from the RASplus options under the **Start** menu in Windows.

---

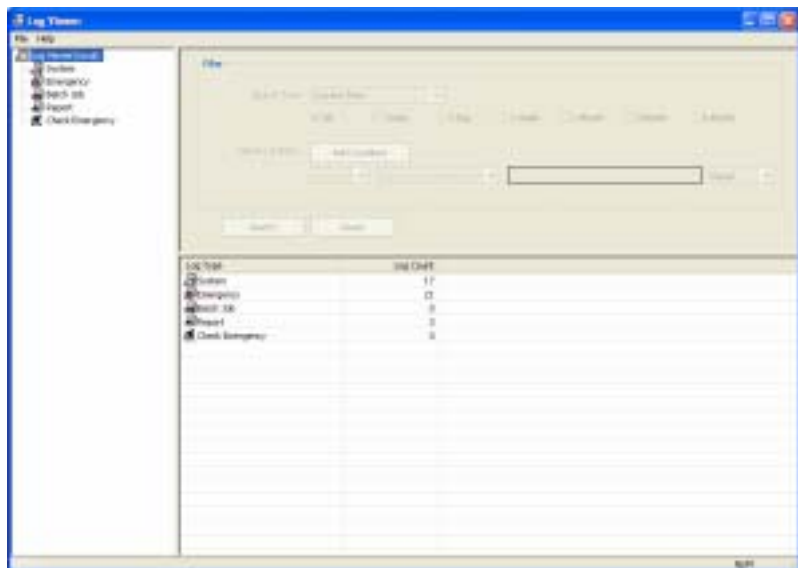
## Log Viewer (View Log)

Displays the type of log and the number of log entries.

Select a log type from the list to display all entries of that log type.

Search for the desired log by setting up a search filter.

**Figure 3-29 Log Setup Screen**



## Setting up a Search Filter

**Search Time** Set the time range to search within. Select **Current Time** and the desired period to search for logs from the current time to as far back as the selected timespan. Select **Detail Time** to set up a specific start and end time for the search.



**Detail Condition** Set the desired search parameters. Select a filter target from the second list, and select a filter from the third list (enter a filter in the text box). Then select a comparison operator from the last list:

- **Equal** to search for logs that satisfy the condition (case sensitive)
- **Not Equal** to search for logs excluding logs that satisfy the condition
- **Like** to search for logs that include the entered keyword
- **Not Like** to search for logs that do not include the entered keyword

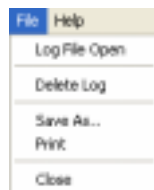
Click **Add Condition** to add more search conditions:

- Select **And** to search for logs that satisfy all conditions.
- Select **Or** to search for logs that satisfy at least one of the conditions.

**Search** Displays log entries that satisfy the current search filter.

**Reset** Resets the search filter.

## File



- **Log File Open:** Opens a log file (.db).
- **Delete Log:** Deletes logs older than a certain age.
- **Save As...:** Saves the log information in the list as a text or CVS file.
- **Print:** Prints the log information.
- **Close:** Closes the Log viewer screen.

## Exit

Disconnects all current connections and exits the RASplus program.

## View Menu

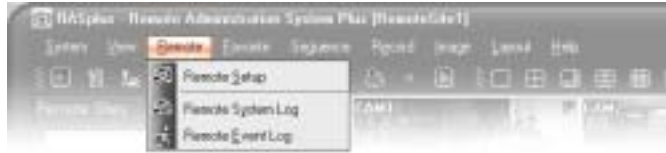
**Figure 3-30 View Menu**



Displays or hides the selected toolbar and panels.

## Remote Menu

Figure 3-31 Remote Menu



---

**Note** The Remote menu can also be activated by clicking the right mouse button after selecting the remote site on the Remote Sites panel.

---

### Remote Setup

**Remote Setup** can be used to change the setup of a remote DVR. Select the remote site on the Remote Sites panel, initiate the Remote Setup menu, and the setup screen displays.

---

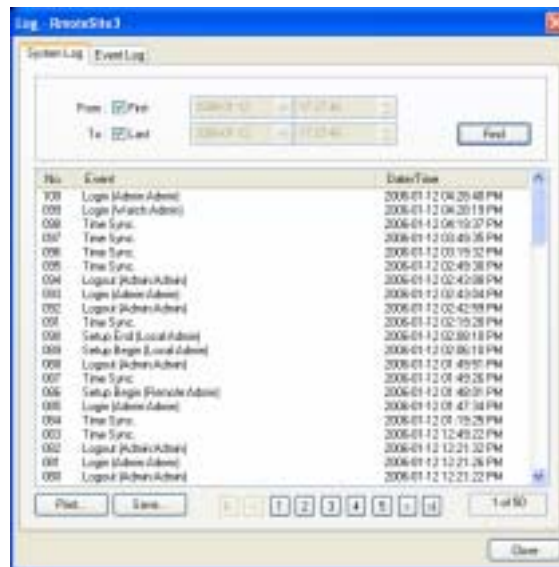
**Note** Refer to the user manual for the remote DVR for more details on system setup.

---

### Remote System Log/Remote Event Log

These selections display the system log and event log information of a remote DVR. Set the time range of interest and click **Find**. The log entries within the time range display on the list. 100 results can be displayed in a single page. Click the **Move** buttons to display additional results.

**Figure 3-32 Remote System/Event Log**



**From** Adjust the search starting date and time. When **First** is selected, it will search from the first logged item.

**To** Adjust the search ending date and time. When **Last** is selected, it will search to the last log.

**Find** Displays remote log entries within the selected time period.

**Print...** Prints the log information.

**Save...** Saves the log information as a text or CSV file (UTF-8 encoded).

**Move Buttons** Moves to the first page (⏪), previous page (⏩), next page (⏴) or last page (⏵). You can also go directly to a log page by clicking the corresponding page number.

**Close** Closes the Log dialog box.

## Favorite Menu

---

**Note** The Favorite menu can also be accessed using the toolbar controls.

---

**Figure 3-33 Favorite Menu**



Saves the current screen layout directly to the Favorite site.

## Sequence Menu

---

**Note** The Sequence menu can also be accessed using the toolbar controls.

---

**Figure 3-34 Sequence Menu**



Starts or ends auto sequencing (Watch Screen only).

## Record Menu

---

**Note** The Record menu can also be accessed using the toolbar controls.

---

**Figure 3-35 Record Menu**



Starts or ends panic recording. Selecting **Record Play** initiates the Record Player program and plays recorded video. See *Panic Recording*, page 77, for more details.

## Image Menu

**Figure 3-36** Image Menu



---

**Note** The Image menu can also be accessed using the Image Processing panel controls and the toolbar controls.

---

**Save** Saves the current image as a bitmap or JPEG file.

**Print** Prints the current image.

---

**Note** See *Live Monitoring* on page 59, and *Playback and Search* on page 64, for more details.

---

## Layout Menu

**Figure 3-37** Layout Menu



---

**Note** The Layout menu can also be accessed using the toolbar controls.

---

## Screen Layout

Figure 3-38 Screen Layout



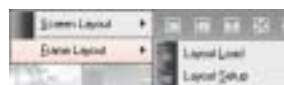
**Layout Change** Select the desired screen layout using the **Layout Change** menu. When changing the screen layout, the selected camera on the current screen will be located in the first cell of the new layout.

**Previous/Next Cameras** When in one of the multi-view formats, selecting **Previous Cameras** or **Next Cameras** will move to the previous or next page. In other words, when viewing Cameras 1 to 4 in the quad format, selecting **Previous Cameras** will display Cameras 61 to 64 and selecting **Next Cameras** will display Cameras 5 to 8.

**Full Screen** Selecting **Full Screen** enters the full-screen mode, and returns to the previous screen mode by pressing the **Esc** key on the keyboard or selecting **Full Screen Close (x)** from the popup menu displayed by clicking the right mouse button.

## Frame Layout

Figure 3-39 Frame Layout



**Layout Load** Select the desired frame layout and click **Load** to apply the selected frame layout to RASplus.

**Figure 3-40 Layout Load**



- **Default Layout:** Displays the panels that are used most frequently in the Watch and Search screen modes.
- **Admin Layout:** Displays only the panels that are used most frequently in the Admin screen mode.
- **Full Layout:** Displays all the panels.
- **Hide Layout:** Hides all panels and displays only the screen.
- **User Defined Layout:** Displays the user-defined layout.

**Layout Setup** The user can configure the frame layout by displaying panels on the screen where they are most convenient. Set up the user-defined frame layout.

**Figure 3-41 Layout Setup**



- **Always Load Layout at RASplus Startup:** Select whether or not the selected frame layout loads automatically when RASplus starts.
- **Save:** Enter a layout name and click **Save** to save the current frame layout as a new user-defined layout.
- **Rename:** Select the layout from the Layout List and click **Rename**. Then change the layout name.
- **Delete:** Select the layout to delete from the Layout List and click **Delete**.

---

**Note** Up to 10 user-defined layouts can be saved.

---

## Help Menu

Displays RASplus version information.

---

## Toolbar

---

The Toolbar allows convenient access to desired functions.

**Figure 3-42 RASplus Toolbars**



The controls on the toolbar perform functions as described below:

**Figure 3-43 RASplus Controls Toolbar**





	Disconnect		Save Favorite Sites
	RASplus Setup		Auto Sequence
	Load Setup file		Save
	Save Setup file		Print
	Batch Job Setup		Panic Recording
	Log		Play

**Figure 3-44 Screen Layout Toolbar**

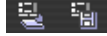






## Configuration

Select the desired screen layout using the layout toolbar. When changing the screen layout, the selected camera on the current screen will be located in the first cell of the new layout. When in one of the multi-view formats, click  or  to move to the previous or next page.

**Figure 3-45** Frame Layout Toolbar



Click  (Layout Load) to apply the selected frame layout to RASplus, and click  (Layout Setup) to set up the user-defined frame layout.

## Configuration

# Operation


---

## Live Monitoring


---

RASplus provides remote monitoring functions for viewing video images in real time from either a single site or multiple sites. In addition, when events are detected at a remote site while in the live monitoring mode, RASplus displays the event information on the Watch Event View panel. In order to perform live monitoring, the display option must be set to **Watch Screen** or **Watch and Search Screen** during System setup.

### Connecting to a Remote Site

To connect a remote site on the Watch screen, select the site or camera you want to connect to in the Remote Site, Favorite Sites, or Map panel and then drag and drop it in the desired position on the screen. The  icon displays on each Watch screen.

### Disconnecting from a Remote Site

To disconnect the current connection, select in the Remote Sites, Favorite Sites, or Map panel the site or camera you want to disconnect, then click  (the disconnect button) on the toolbar, or select **Disconnect** from the System drop-down menu.

---

**Note** Some DVR models will only transmit images to the RASplus system while recording video.

---

---

**Note** When selecting the display option of **Watch and Search Screen** during System setup, the remote site can also be set to connect using the right or left mouse buttons (this is user-defined and must be set during System setup). Select **Watch Screen** to connect to the selected site on the Watch screen when the following text menu screen appears.

---



**Figure 4-1 Watch Search Screen Selection**





## Screen Layout and Frame Layout

**Figure 4-2 Screen Layout Toolbar**



RASplus provides multiple screen layout options. The formats available are single-screen, quad, 1+7, 3x3, 4x4, 5x5, 1+32, 6x6, 7x7, 8x8 and full-screen. When in one of the multi-view formats, clicking  or  will move to the previous or next page.


To view a specific image in the single-screen mode, move the cursor to that image and double-click the left mouse button. To return to the previous screen mode from the single-screen mode, double-click the left mouse button in the monitoring window.

Clicking  (Layout Load) will apply the selected frame layout to RASplus, and clicking  (Layout Setup) allows you to set up the user-defined frame layout.

## Audio Communication

RASplus supports audio communication between the RASplus system and a remote site that is equipped with two-way audio. If you want to enable communication with a remote site that supports two-way audio, then select any camera from the remote site on the screen and click the right mouse button.

---


**Note** The icon  displays on each camera screen when audio communication is available between the RASplus system and the remote site.


---



Select **Enable Audio** from the menu to display the following audio control panel.


**Figure 4-3 Audio Communication Menu**



To send audio to the selected remote site, click  and speak into the microphone.

To monitor live audio from the selected remote site through the attached speaker, click .

Click both  and  for two-way communication.

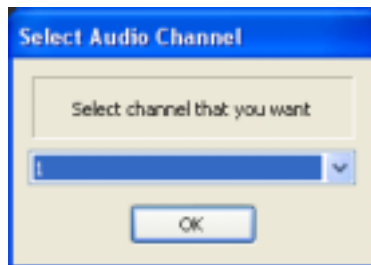
Click  to disable audio communication.

### Selecting an Audio Channel

Only DVRs that support remote two-way audio allow you to select an audio channel to monitor from the RASplus system.

Click  to display the Select Audio Channel dialog box.

**Figure 4-4 Select Audio Channel Dialog Box**




Select an audio channel to monitor, then click **OK**.


---

**Note** To verify if two-way audio is supported, check the user guide for your DVR.

---

## Sequence Monitoring

Click  on the toolbar to sequentially connect to the registered sites. This allows for connection to more than one remote site and for the display of images from selected cameras.

Click  during sequence monitoring to release sequence monitoring and to maintain the current connection.


For sequence monitoring to function, the sequence sites should be registered during System setup. See *Sequence Monitoring* on page 61 for details on configuring the sequence site.

---

**Note** While in the sequence monitoring mode, you cannot manually connect to sites by dragging and dropping with the mouse.

---

## Color Control

Adjust the brightness, contrast, saturation and hue of live video for each camera by clicking the corresponding buttons on the Color Control panel. Clicking  cancels the image processing operation and reloads the original image. Only the administrator can adjust the image through RASplus.

---

**Note** It is important that cameras are properly adjusted. These adjustments cannot make up for improperly adjusted cameras when the images are recorded.

---

---


**Note** Not all DVRs support color control through RASplus. Refer to the user manual for your DVR.

---

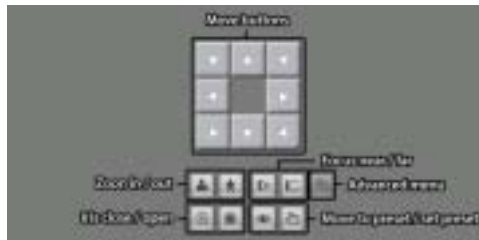
**Figure 4-5** Color Controls



## PTZ Control

Select a PTZ camera at the remote site, and control pan, tilt and zoom operations. Only the administrator can control a PTZ dome through RASplus. The  icon will display on each camera screen on which a PTZ can be controlled remotely.

**Figure 4-6 PTZ Controls**



---

**Note** Advanced menu control features are enabled when a camera that is connected to the DVR supports PTZ features such as Speed, Auto Pan, Tour, etc, and the DVR supports remote PTZ control. Depending on the specifications of the PTZ camera, some features of the Advanced menu might not be active.

---

---

**Note** PTZ control using the mouse is supported. Click the left mouse button on the image drag the mouse to move that image in the direction you want. Roll the mouse wheel to zoom in or out.

---

---

**Note** Not all DVRs support the PTZ control through RASplus. Refer to the user manual for your DVR.

---

## Alarm Out Control

Control alarm out devices on the remote DVRs by clicking the **ON** or **OFF** buttons. Only the administrator can control an alarm out through RASplus.

**Figure 4-7 Alarm Out Controls**



---

**Note** Not all DVRs support the Alarm Out control through RASplus. Refer to the user manual for your DVR.



---

---

## Playback and Search

---

RASplus allows you to play back and search recorded images on remote DVRs. It also provides additional functions including zoom, various image enhancements, image saving and printing. To use remote playback and search functions, the display option must be set to **Search Screen** or **Watch and Search Screen** during System setup.

To connect to a remote site on the Search screen, select the site or camera you want to connect to in the Remote Site or Favorite Sites panel and then drag and drop it in the desired position on the screen. The  icon will be displayed on each Search screen. The remote site connection on the Search screen will automatically be disconnected if there is no activity for a specified time. Click  on the toolbar or select Disconnect from the System drop-down menu to disconnect the current connection manually.

---

**Note** Connecting to a Favorite site will be available if the **Search Screen** display option was set up to connect to selected Favorite sites. Refer to *Favorite Sites Panel* on page 26 for more details on Favorite Site setup.

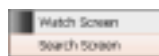
---

---

**Note** When selecting the display option of **Watch and Search Screen** during System setup, the remote site can be also be set to connect using the right or left mouse buttons (this is user-defined and must be set during System setup). Select **Search Screen** to connect to the selected site on the Search screen when the following text menu screen appears.

---

**Figure 4-8 Watch Search Screen Selection**



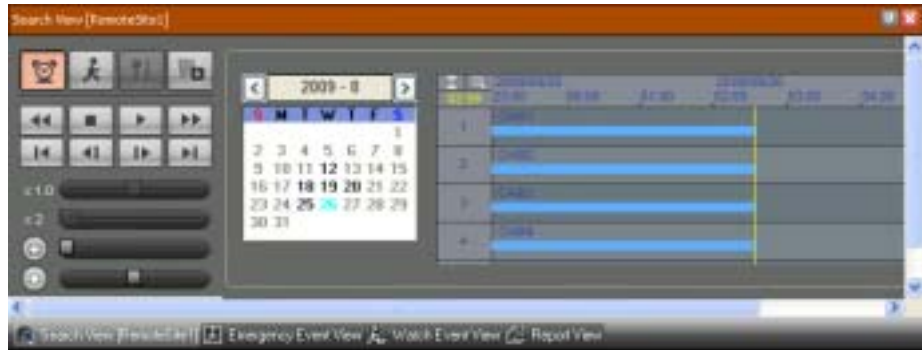
It is possible to display cameras in both the Watch Screen mode (live view) and Search Screen mode at the same time. For example, you can connect to a remote DVR site with nine cameras. Drag and drop the site into the first frame on the viewing screen and



select **Watch Screen**. Live video will display in the first nine frames on the screen. Then, drag and drop the site into the 10th frame on the viewing screen and select **Search Screen**. You will be able to view any video recorded on the remote DVR in frames 10 through 18.

## Search View Panel

Figure 4-9 Search View Panel



The Search View panel consists of playback and search controls, a time-lapse search table, and an event search table. The playback buttons on the Search View panel perform the following functions:

	Fast Backward Play		Go to the First Image
	Stop		Go to the Previous Image
	Play		Go to the Next Image
	Fast Forward Play		Go to the Last Image

---


**Note** The speed of fast forward depends on network bandwidth and the number of images per second recorded.



---

You can control the playback speed of images that are currently being played back by using the control slider.

You can control the fast forward or fast backward playback speed of images that are currently being played back fast forward or fast backward by using the control slider.

You can enlarge a specific part of the image up to five times using the control slider.

The user can electronically pan and tilt within the enlarged image by dragging the image using the mouse. Click the left mouse button on the enlarged image and drag to move its position. Click the  button to cancel the enlargement and reset the image.

You can change the brightness of the current image using the  control slider. Click the  button to cancel the brightness changes and reset the image.

---

**Note** Zoom in/out and brightness control work only while the image is paused.

---

## Search Mode

RASplus supports two search modes: time-lapse and event. The time-lapse search mode searches for recorded data by time and date and then plays back images found within the time parameters. The event search mode searches for event log entries using specific conditions and plays back the images associated with those event entries. These two modes have different panel configurations and search methods.

---

**Note** You cannot use both search modes at the same time.

---

## Time-Lapse Search

1. Click  on the Search View panel to enter the time-lapse search mode.

**Figure 4-10 Time-Lapse Search Screen**




---

**Note** The timetable of the time-lapse search panel will differ depending on the model of the remote DVR that is connected to RASplus.

---

2. Selecting a date from the calendar initiates the time-lapse search. This also enables dates with available recorded images.

When first entering the time-lapse search, the latest date with recorded images will be selected (highlighted) in the calendar.


3. Click  (**Reload**) to reload the date information. Recorded information available from the selected date will be displayed on the timetable.

The recorded data for all cameras is displayed by time in one-hour segments and bar-shaped segments indicate that there is recorded data during that time.

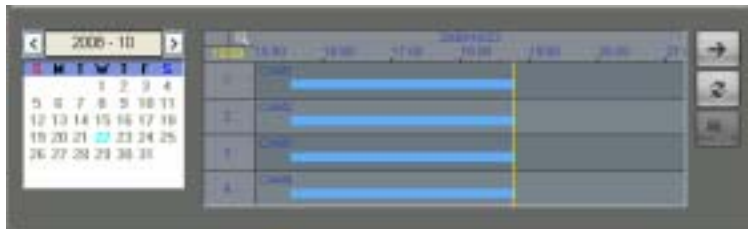
4. Select a specific hour by clicking the mouse on the desired hour segment. Video images will be played back starting with the first image captured within the one-hour segment. A yellow-highlighted segment indicates the selected time that will be played back.

### Choosing a Segment

If the remote DVR's time and date have been reset to a time that is earlier than some recorded video, then it is possible for the DVR to have more than one video segment in the same time range.

Click  (the Segment button) and select the video segment you want to search. The active segment is highlighted with pink, and the inactive segment is highlighted with gray on the timetable.

**Figure 4-11** Selecting a Video Segment



The recorded data for each camera channel is displayed by time in one-minute segments and a red vertical line indicates the selected time that will be played back. The color of the bar indicates different types of recording:


- Yellow = Pre-Event
- Purple = Event
- Red = Panic
- Blue = Time-Lapse

If the DVR has more than one video segment in the same time range, each segment will be separated by a yellow vertical line.

---

**Note** The timetable of the time-lapse search panel will be different depending on the model of the remote DVR that is connected through RASplus.

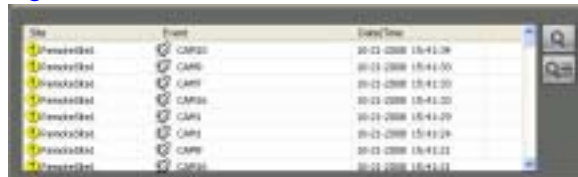
---

To view an image at a specific time, click , the Go To button and set up the date and time to search.

## Event Search

1. Click  on the Search View panel to enter the event search mode.

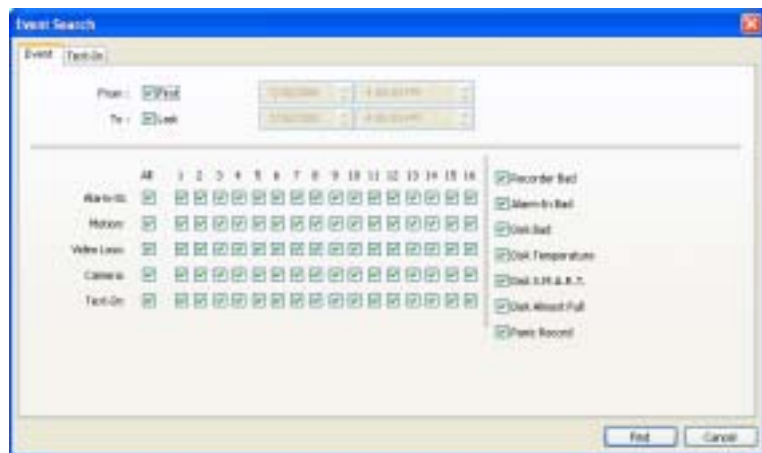
**Figure 4-12 Event Search Panel**



Site	Event	Event Time
Pranoid001	CAM0	20-11-2008 15:41:29
Pranoid001	CAM0	20-11-2008 15:41:30
Pranoid001	CAM0	20-11-2008 15:41:31
Pranoid001	CAM0	20-11-2008 15:41:32
Pranoid001	CAM0	20-11-2008 15:41:33
Pranoid001	CAM0	20-11-2008 15:41:34
Pranoid001	CAM0	20-11-2008 15:41:35
Pranoid001	CAM0	20-11-2008 15:41:36

2. Click .
3. Set up the search condition in the **Event Search** dialog box (*Figure 4-13*).

**Figure 4-13 Event Search Dialog Box**



The dialog box shows the 'Event' tab selected. It includes fields for 'From' (20/11/2008) and 'To' (20/11/2008). Below these are 16 columns representing days of the month. On the right side, there are several checked checkboxes for event types: Recorder Fail, Memory Fail, Disk Fail, Disk Temperature, Disk S.M.A.R.T., Disk Almost Full, and Power Record.

**Figure 4-14 Event Search Text-In Dialog Box**



The dialog box shows the 'Text-In' tab selected. It includes fields for 'From' (20/11/2008) and 'To' (20/11/2008). Below these are 16 columns representing days of the month. The main area contains a table for defining search criteria:

Chan#	Chan#	Chan#	Chan#	Chan#	Chan#	Chan#	Chan#	Chan#	Chan#	Chan#	Chan#	Chan#	Chan#	Chan#	Chan#
Chan#	Chan#	Chan#	Chan#	Chan#	Chan#	Chan#	Chan#	Chan#	Chan#	Chan#	Chan#	Chan#	Chan#	Chan#	Chan#
Chan#	Chan#	Chan#	Chan#	Chan#	Chan#	Chan#	Chan#	Chan#	Chan#	Chan#	Chan#	Chan#	Chan#	Chan#	Chan#
Chan#	Chan#	Chan#	Chan#	Chan#	Chan#	Chan#	Chan#	Chan#	Chan#	Chan#	Chan#	Chan#	Chan#	Chan#	Chan#

At the bottom, there are 'Load' and 'Save' buttons, and a 'Case Sensitive' checkbox.

---

**Note** The Event Search dialog box will differ depending on the specifications of the remote DVR.

---

---

**Note** The Text-In (Event Search - Text-In tab) search might not be supported, depending on the specifications and version of the remote DVR.


---

4. Set up the search criteria for the event search in the **Event Search** dialog box, and click **Find**.

---

**Note** When **First** is selected for the search starting time, the search will be from the first recorded data. When **Last** is selected for the search ending time, the search will be to the last recorded data.

---

5. The results will be displayed in the event list. A total of 100 results can be displayed at a time.
6. Click  (**Query Next**) to display the next 100 results.
7. Select an event in the list to play back the recorded data associated with that event. The images may be played back using the playback buttons.

## Text-In Event Search

Event Search offers the capability of searching for video associated with text.

---

**Note** If it is desired to view the video with text overlay, ensure that **Overlay Text-In Data** is enabled when setting up RASplus (**System menu** ► **Setup** ► **System 1** ► **OSD Setup** ► **Overlay Text-In Data**).

---

1. Enter video search criteria based on text strings in the Event Search Text-In dialog box (*Figure 4-15*).

**Figure 4-15 Text-In Event Search Dialog Box**



2. Select the target cameras to search for text-in data.
3. If needed, enable or disable the **Case Sensitive** check box. When enabled, the DVR distinguishes between upper and lower case letters.
4. Enter the text string you are searching in the **Name** field.
5. Select a comparison operator from the **Comp** drop-down list that is used to compare the **Name** and **Value** fields.
6. Enter in the **Value** field the comparison value of the text entered in the **Name** field.


**Note**

The Column and Line fields can be used for more specific searches of text-in data. **Column** (0–80) is used to identify a desired number location within multiple columns of numbers. **Line** (0–5) is used to search for desired data in a line below the text string that is entered into the **Name** field. When **Line** = 0, the search criteria will be based on the numerical value found in the same line that the text string content is found.

7. Designate the location of the comparison value in the Column and Line fields.
8. After you set your desired search conditions, click **Find** to display the search results.

## Additional Functions

### Searching Data Source

Click  on the Search View panel to set up the data source to be searched.

**Figure 4-16 Search Data Source Screen**



**Search on Local** Searches the recorded data on the primary storage installed in the DVR.

**Search on Archive** Searches the archived data on the backup storage installed in the DVR.

**Search on Other** Searches recorded or archived data on storage used for another DVR then installed in the selected remote DVR.

---


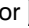
**Note** The **Search on Other** option might not be supported, depending on the specifications and version of the remote DVR.



---

## Screen Layout and Frame Layout

**Figure 4-17 Screen Format Toolbar**



RASplus provides multiple screen layouts for playback. The available layouts are single-screen, quad, 1+7, 3x3, 4x4, 5x5, 1+32, 6x6, 7x7, 8x8, and full-screen. When in one of the multi-view formats, clicking  or  will move to the previous or next page. To view a specific image in the single-screen mode, move the cursor to that image and double-click the left mouse button. To return to the previous screen mode from the single-screen mode, double-click the left mouse button in the playback window.






Clicking  (Layout Load) will apply the selected frame layout to RASplus, and clicking  (Layout Setup) allows you to set up the user-defined frame layout.

## Image Processing

**Figure 4-18 Image Processing Panel**



The **Image Processing** panel allows enhancing played back images using processing controls.

	Blurs the image		Reduces the alias effect that occurs when using the zoom feature.
	Sharpens the image		
	Equalizes the image		Reloads the original image

## Playing Recorded Audio

RASplus will play audio when it is in the single-screen layout while playing back recorded video that has recorded audio.

## Turning Audio Playback On and Off

Click the right mouse button on the screen. A menu displays. Select **Enable Audio** from that menu to turn audio playback **On** and **Off**.

---

**Note** Audio might be interrupted during playback because of network conditions and your PC's performance.


---

---

**Note** Playing recorded audio may not be supported, depending on the specifications of the remote DVR.

---

## Save

Click  on the Search View panel to save recorded video.

**Figure 4-19 Save Type Screen**



**Save as Self-Player...** Saves any video clip of recorded data as an executable file.

1. Set up the save parameters in the following dialog box.



2. Click **Start**, and select **Save in**.
3. Enter a file name and then select **Save as type (.exe)** for the video you are saving.
4. Click **Save**.

**Figure 4-20 Save As Self-Player**



---

**Note** When more than one video segment exists in the same time range due to time overlap, a segment selection dialog box appears, prompting you to select the video segment you want to save from the segment list. Refer to the user manual that came with the remote DVR for details on time overlap.

---

---

**Note** When the data file reaches 2 GB, you are prompted to continue saving by creating multiple files in 2 GB units. If you do not want to be asked, select **Don't ask about file limit**.

---

---

**Note** The Save As Self-Player dialog box differs, depending on the specifications of the remote DVR.

---

**Save As Video...** Saves any video clip of recorded data in an **AVI** (Audio Video Interleaved) file format.

1. Click **Save As Video**. The Save As Video screen appears.

**Figure 4-21 Save As Video Screen**



2. Set up the save parameters in the Save As Video screen.
3. Click **Start** and then set the file name.
4. Click **Save** to start saving video.

---

**Note** Select **Include Audio Data** to include audio when saving video with recorded audio. This option is not available when more than one camera is selected.

---

---

**Note** When the data file reaches 2GB, saving stops. Select **Limit File Size** and adjust the maximum file size to stop saving when the data file reaches the maximum file size setting. Select **Save Split File** to save video by creating multiple files in 2GB units or in the Max File Size units.

---


---

**Note** Select **View Proceeding Frames** to display a popup screen showing the video currently being saved.


---

## Additional Functions

### Save

Click  on the toolbar to save the current image as a bitmap or JPEG file. If you place a checkmark in the box beside **Include Image Info**, then the text information about the site will be included when the image is saved.

### Print

Click  on the toolbar to print the image currently displayed on the screen on a printer connected to your computer. By placing a checkmark in the box beside **Include Image Info**, text information about the site will be included when printing the image.

### Screen Menu

Select a camera on the Watch or Screen screens and then click the right mouse button to display the popup menu.

**Figure 4-22** Camera Popup Menu



**Table 4-1 Camera Popup Menu Options**

Option	Function
<b>Change Camera Title</b>	Changes the camera name that displays on the screen. If you leave the Camera Title blank, then the camera name remote setup appears. Changing the camera title does not affect the camera name that was set up on the remote site.
<b>Enable Audio</b>	Enables audio communication with the remote site on the Watch screen (Two-way audio equipped remote sites only). Plays audio while playing back, on the Search screen, recorded video that has recorded audio. See <i>Live Monitoring</i> on page 59 and <i>Playback and Search</i> on page 64 for more information.
<b>Aspect Ratio</b>	<p>Changes the image aspect ratio that is displayed on each camera screen.</p> <p><b>Fit to Screen</b> Displays the images by fitting them to the screen size.</p> <p><b>Original Ratio</b> Displays the images by fitting them within the screen size while maintaining their original ratio.</p> <p><b>Half Size (x0.5) to Quadruple Size (x4)</b> Select the desired image size. Options are enabled when the selected camera screen can displays images in that size.</p>
<b>Set Record Camera</b>	Sets the selected camera channel to be recorded during panic recording. See <i>System Menu</i> on page 35 for information on configuring camera channels for panic recording.
<b>Deinterlacing</b>	Enhances image display quality of interlaced video on the screen by eliminating horizontal scan lines or noise in areas with motion.
<b>Anti-Aliasing Screen</b>	Enhances image display quality for all cameras on the screen by eliminating stair-stepping (aliasing) effects in the enlarged image.
<b>Disconnect Camera</b>	Disconnects a camera on the screen.

---

**Note** With some computers, the image drawing speed might decrease while using a deinterlace filter, depending on the type of deinterlace filter.

---

---


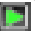
**Note** With some computers, the image drawing speed might decrease when the Anti-Aliasing Screen option is selected.

---

---

## Panic Recording

---

Clicking  on the toolbar starts panic recording of cameras currently displayed on the Watch screen. Clicking the button again stops panic recording. Up to 16 channels can be recorded at a time, and you can select which cameras are to be recorded during the System setup. Clicking  on the toolbar initiates the Record Player program and plays video saved in the recording folder designated during the System setup. The Record Player GUI and its controls are almost identical to the Clip Player. Refer to [Appendix A, Video Clips Review](#) for more details.

If you want to play back video saved in another recording folder, run the Record Player program first. Move to the Start menu in Windows. Then, select **Record Player** from the RASplus options and select the recording folder path you want.

Recorded video can be saved in a bitmap or as an executable file using the save function of the Record Player.

---

**Note** Panic recording will be available only if you select the **Use Recording** check box in the recording options during the System setup.


---

---

**Note** The date and time displayed on the Record Player indicates when the recording was made on RASplus.

---

---

**Note** The  icon will display on each screen when panic recording starts.

---

---

**Note** Audio recording is not supported.

---

---

## Status View

---

RASplus provides a display of event, alarm out, system check and recording status information from the connected remote site in real-time. To connect the remote site, select the site or camera you want to connect to from the Remote Site or Emergency Event View panel and then drag and drop it in the Status View panel. Or, you can select **Connect Status** from the popup menu displayed by clicking the right mouse button after selecting the site from the Remote Site list.

**Figure 4-23** Status View Panel




## Function Buttons



**Disconnect:** Disconnects the current connection on the Status View panel.

---

**Note**

If you want to connect to another site, disconnect from the currently connected system on the Status View panel first by clicking .

---



**Remote Setup:** Allows changing the setup of the remote DVR connected to the Status View panel.

---

**Note**

Refer to the manual for each applicable remote DVR for more details on system setup.

---



**Remote System Log:** Displays the system log information of the remote DVR connected to the Status View panel.



**Remote Event Log:** Displays the event log information of the remote DVR connected to the Status View panel.

---

**Note**

See *Remote Menu*, page 50, for more details on the Remote System Log and Remote Event Log.

---


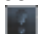
---

**Note**

When the remote site is not connected to the Status View panel, Remote Setup, Remote System Log and Remote Event Log menus can be accessed by clicking the right mouse button after selecting the remote site on the Remote Sites panel.

---



**Remote Panic Control:** Controls panic recording of the remote DVR that is connected in the status view panel.  (Panic Recording On) indicates that the remote DVR is not in the panic recording mode and that you can start panic recording by clicking the button.  (Panic Recording Off) indicates that the remote DVR is in the panic recording mode and that you can stop recording by clicking the button.

---

**Note** Remote Panic Control might not be supported, depending on the specifications and version of the remote DVR.

---



























## Status Display Window

The **Status Display Window** displays the event, alarm out, system check and recording status information of the remote system connected to the Status View panel in real-time.

---

**Note** Status Display might not be supported, depending on the specifications of the remote DVR.

---

- **Event:** Displays events detected by the internal motion detector or by an external sensor. The status display of event detection will continue during the preset dwell time of the event-driven recording.
  - Event Detection   (Motion Detection, Sensor)
  - No Event Detection  
  - Event Off  
- **Alarm Out:** Displays status of the alarm-out signals.
  - Alarm Out 
  - No Alarm Out 
  - Alarm Out Off 
- **System Check:** Displays the function status of the camera, alarm, and recording.
  - Normal    (Camera, Alarm, Recording)
  - Irregular   
  - System Check Off   
- **Record From/To:** Displays the record period.
- **Status:** Displays the recording, playback, archiving, clip-copy status.
  - On     (Recording, Playback, Archive, Clip-Copy)
  - Off    
- **Version:** Displays the system version information.



# A

## Video Clips Review

You do not need to install any special software on your personal computer to review video saved as Self-Player files. The file contains a built-in Player program. Double-clicking the target file starts the Player program.

---

**Note** The Player GUI will differ depending on the model of the remote DVR that is connected to RASplus when reviewing the video saved as a Self-Player file.

---

---

## MiniBank Player

---

---

**Note** Honeywell suggests that the computer used for the MiniBank Player program has at least an 800MHz Pentium III. If your CPU is slower than this, video clips recorded at maximum speed with very high image quality will be played back slowly.

---

**Figure A-1 MiniBank Self Player User Interface**



The **Monitoring Screen** displays the backed up images. Click the right mouse button on the image while holding the **Shift** key to switch the screen size. Click and hold the left mouse button and drag the image to move its position.

Click **Quit** to exit the Player program.

Click **Save** to save the current image in a bitmap file format on the local hard disk drive or floppy disk.



Click **Print** to print the current image on the printer connected to your computer.

The **Backup File Information** window displays information regarding the backup file. **Location** displays the site description of the DVR where the backup was made. **Record** displays the time span of the video backup file. **Encryption** displays whether the backup file has been tampered with. **Normal** means the file has not been tampered with, **Wrong** means the system has detected tampering, and no mark means the user cancelled the encryption check.

The **Current Image Information** window displays information about the current image. **Camera Title** displays the camera name of the current image, and **Time** displays the date and time the image was recorded.

The **Image Search Slide Bar** displays the current playback position. The user can move to another image by clicking and dragging the slide bar.

The **Playback Function Buttons** include fast backward, backward, play, pause, fast forward, go to the first image, go to the previous image, go to the next image, and go to the last image buttons.

The **Brightness Control Slide Bar** adjusts the brightness of the backup images by clicking and dragging the slide bar. Minute brightness change can be made using  and  located at each end of the bar.

The **Brightness Revert Button** reloads to the original image.

Click the **Zoom Out / In** buttons to zoom in or out of the current image. Scrolling the mouse wheel up or down on the image also zooms in or out.

Clicking the **OSD (On-Screen Display)** button switches the OSD option. The OSD information includes camera location and date/time.

Clicking **Mute** mutes the recorded audio.

Double-clicking the logo at the top left corner while holding the **Shift** key switches video formats when you are experiencing improper image display.

---

## Clip Player

---

---

**Note** It is suggested that the computer used for the Clip Player program has at least an 800MHz Pentium III. If your CPU is slower than this, video clips recorded at maximum speed with very high image quality will be played back slowly. Also, DirectX 9.0 or higher is required to install, and a VGA card with 16 MB or higher video RAM is recommended for proper operation.

---

---

**Note** You will be asked to enter the password to initiate the Clip Player program if you select the **Save Password** option when saving recorded video.

---

**Figure A-2** Clip Player User Interface



The Clip Player screen displays the clip images.

---


**Note**


Proper image display depends on the PC display settings. If you are experiencing display problems, click the right mouse button on the background screen and select **Properties > Settings** then set the **Color quality** to **32 bit**. Then select **Advanced > Troubleshoot**, and set the **Hardware Acceleration** to **Full**.

If the display problem continues, make sure that DirectX version 9.0 or higher has been installed. To check the version of DirectX, click **Start > RUN** and type `dxdiag`. Hit the **Enter** key to display the DirectX Diagnostic Tool dialog box. Move to the Display tab and make sure **DirectDraw Acceleration** is set to **Enabled**. Test DirectDraw by selecting the **DirectDraw Test** button.


Please check the driver version of the video card and update it to the latest available version. If you still have display problems after changing all display settings described above, try replacing the video card. Video cards with an ATI chipset are recommended.


---


Click  to exit the Player program.

Click  to go to the beginning of the video clip.


Click  to play the video clip in fast reverse.


Click  to go back one frame of the video clip.


Click  to play the video clip.


Click  to go forward one frame of the video clip.

Click  to play the video clip in fast forward.

Click  to go to the end of the video clip.

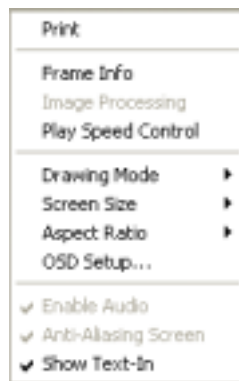
Click  to show the previous camera group if there is recorded video in the previous camera group in the current screen mode.

Click  to cycle through the screen layouts. It cycles through 2x2, 1+7, 3x3 and 4x4.

Click  to show the next camera group if there is recorded video in the next camera group in the current screen mode.

Click  to set up the Clip Player properties. The Clip Player menu opens.

**Figure A-3 Clip Player Menu**




**Table A-1 Clip Player Menu Functions**

Option	Function
<b>Print</b>	Prints the current image.
<b>Frame Info</b>	Displays the Channel, Title, Time, Type, Size, and Resolution information about the image.
<b>Image Processing</b>	Controls brightness, blur, and sharpness of playback images. (Single-screen layout and Pause Mode only)

**Table A-1 Clip Player Menu Functions**

<b>Option</b>	<b>Function</b>
<b>Play Speed Control</b>	Changes the playback speed ( <b>Play</b> ) or fast forward/backward speed ( <b>FF/RW</b> ).
<b>Drawing Mode</b>	Selects the draw mode level. If you are not sure about the best draw mode level for your system, try each level until the image displays properly.
<b>Screen Size</b>	Changes the ClipPlayer screen size.
<b>Aspect Ratio</b>	Changes the image aspect ratio displayed on each camera.
<b>OSD Setup...</b>	Selects options to display on the screen.
<b>Enable Audio</b>	Plays audio while playing back recorded video that has recorded audio. (Single-Screen Layout Only)
<b>Anti-Aliasing Screen</b>	Enhances image display quality on the screen by smoothing the stair-stepping (aliasing) effects in the enlarged image. If the video plays slow because of the slow speed of your CPU, then release the Anti-Aliasing Screen option to possibly improve playback speed.
<b>Show Text-In</b>	Displays video with text-in data if the video was recorded with text-in data. (Single-Screen Layout only)

Click  to save clip images. The ClipPlayer menu opens.

**Figure A-4 Save Clip Images Menu**





**Table 4-5 Save Clip Images Options**


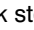
<b>Option</b>	<b>Function</b>
<b>Save as Image</b>	Save the current image as a bitmap or JPEG file.
<b>Save as Image (Actual Size)</b>	Save the current video frame as a bitmap or JPEG file in its actual size. (Single-screen layout only)

**Table 4-5 Save Clip Images Options**

Option	Function
<b>Save as Clip-Copy</b>	Save video for the desired time range as an executable file.
<b>Save as Video</b>	Save video for the desired time range as an AVI file.
<b>Clip-Copy Log</b>	Save the clip-copy log information as a text file. The user information about Save As Clip-Copy will be logged as "Internal-Copy".

Click  to enlarge the image or display the image in its actual size (Single-screen layout only). You can move the enlarged image by clicking the left mouse button and dragging.

Click  to display the image full screen.

Encryption icons display in the bottom-right corner.  displays when the clip file has not been tampered with, and  displays and playback stops when the system has detected tampering.

---

**Note** If the VGA card or monitor does not support 800x600 video resolution, **Full Screen** might not display properly. If this happens, press the **ESC** key on your keyboard to return to the normal screen mode.

---

Click the slider bar and move it left or right to move through the video clip.

Placing the mouse cursor on an image and clicking it will cause that image to display full frame.

---

**Note** Some options might not be available, depending on the specifications and version of the remote DVR.

---





# B

## DVR Name Service (DVRNS)

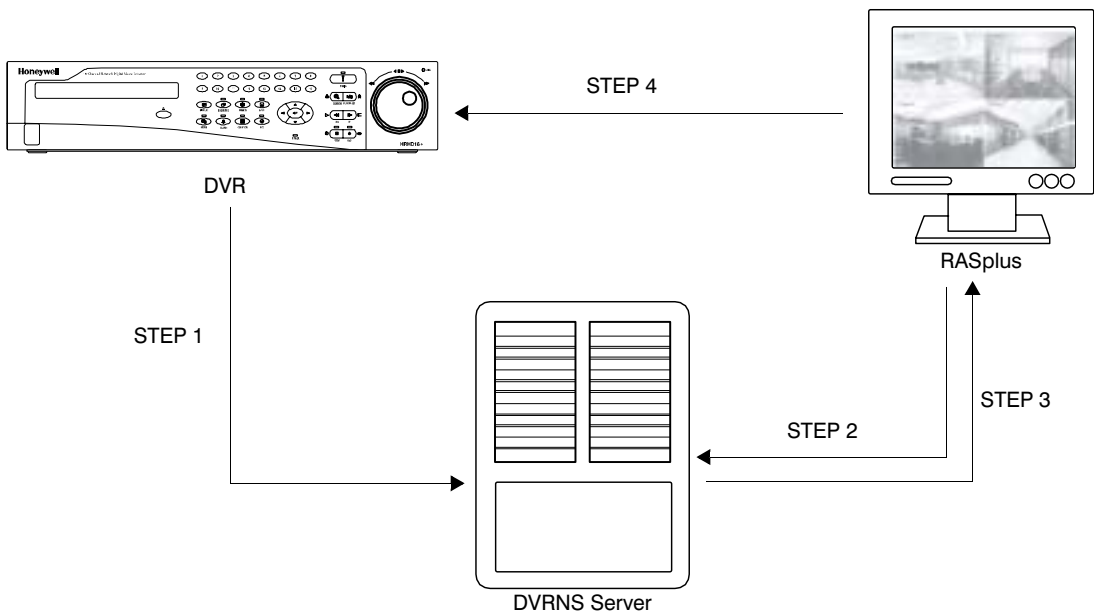
Using Static IP addresses in LAN/WAN networks requires high management overhead and increases the cost burden to users. Therefore, it has become essential for DVRs to support Dynamic IP addresses in ADSL/VDSL networks using DHCP (Dynamic Host Configuration Protocol). This reduces cost burdens and increases cost-effectiveness for system users. Use the following steps to set up a system using DVRNS.

---

### System Configuration

---

Figure B-1 DVRNS Server System Configuration



## DVR Name Service (DVRNS)

### **STEP 1 (DVR > DVRNS Server)**

Register the unit name and IP address of the DVR during the DVRNS setup on the Remote DVR. This unit name and IP address will be registered on the DVRNS server directly.

---

**Note** Refer to the DVR and DVRNS Server guides for detailed information on the DVRNS and DVRNS Server setup. The DVRNS server software and user guide are on the RASplus CD.

---

### **STEP 2 (RASplus > DVRNS Server)**

Request the IP address of the remote DVR using the registered unit name of the DVR you want to connect to.

### **STEP 3 (DVRNS Server > RASplus)**

The DVRNS server notifies the RASplus of the requested IP address.

### **STEP 4 (RASplus > DVR)**

Connect to the target DVR using the IP address returned from the DVRNS server.

---

**Note** You should follow steps 2 to 4 whenever connecting to the remote site because the DVR name and IP address might change at any time.

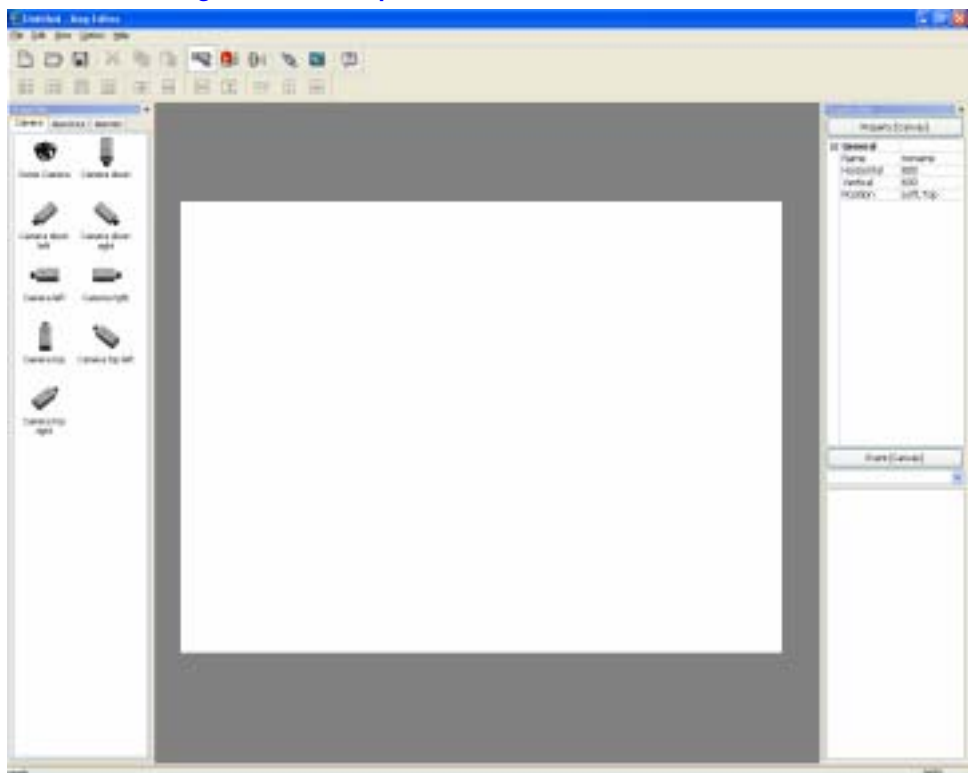
---

# C

## Map Editor

The Map Editor program allows you to create 3-D maps of remote sites. With the drag-and-drop and link function, you can create and edit the map easily and efficiently. Run the program by selecting **Map Editor** from the RASplus options under the Start menu in Windows.

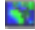
Figure C-1 Map Editor



---

## Background Image Setting

---

1. Prepare the image in a bitmap or JPEG file format.
2. Click  (**Background**) on the toolbar and select the background image of the map.
3. Go to the **Property [Canvas]** tab and set the background image information.

**Figure C-2 Property [Canvas] Tab**



- **Name:** Enter a name of the background image.
- **Horizontal/Vertical:** Adjust the background image size by clicking each field and changing the numbers.
- **Position:** Adjust the position of the background image on the screen. Select **Auto Fit** to fit the map screen size to the background image.

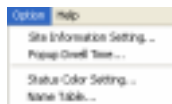
---

## Option Menu

---

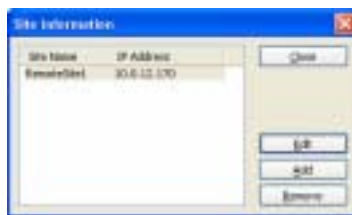
Click the **Option** menu to set up the remote site information, the device status display, and the remote site name to display.

**Figure C-3 Option Menu**



**Site Information Setting** Select the **Site Information Setting...** in the **Option** menu to set the information about the remote site connections, and the following **Site Information** setup window appears.

**Figure C-4 Site Information Window**



1. Click **Add**. *Figure C-4* appears.

**Figure C-5 Site Item Window**



2. In the **Remote Site Setup** area, enter the site name and IP address of the DVR connected to the devices you want to include on the map.
3. Click **Port...** and enter the network IP port number (8000 to 12000) that matches the value set during the LAN setup of the DVR.
4. Check the box beside **Use DVRNS (DVR Name Service)** if you want to use the DVR name service.

---

**Note** If you use DVR Name Service, you can enter the name registered on the DVRNS server instead of the IP address of the DVR, and you do not need to enter the network IP port number.

---

5. Under **Login Setup**, enter the user ID and password for the DVR associated with devices.
6. Under **DVRNS Server**, enter the IP address and port number (10000 to 12000) of the DVRNS server, which matches the values set during the DVRNS setup on the DVR.
7. Clicking **OK** saves the setting.

**Popup Dwell Time** Select **Popup Dwell Time...** in the **Option** menu to set the duration that the Map popup screen displays when events are detected. *Figure C-6* appears.

**Figure C-6 Popup Dwell Time Dialog Box**



Check the box beside **Use Timeout** and adjust the time out dwell time from 1 second to 5 minutes. Select **Display Remaining Time** to display the remaining time out dwell time on the Map popup screen.

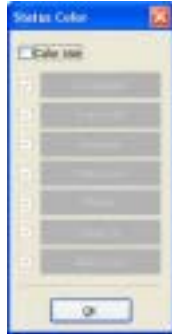
---

**Note** **Popup Dwell Time** will be applied to all maps displayed on the map panel.

---

**Status Color Setting** Select **Status Color Setting...** in the **Option** menu and *Figure C-7* appears. You can set the device to display a unique color reflecting its status on the Map panel.

**Figure C-7** **Status Color Window**



Check the box beside **Color Use** and select each status box to use. Click each selected status box and select the desired color. Click **OK**.

- Unplugged:** Either connection to the remote site has failed, or the **Device No.** for the device is not supported by the site.
- Event off:** Event detection is not set up.
- Irregular:** The device is not working properly.
- Video Loss:** Video loss is detected.
- Motion:** Motion is detected.
- Alarm In:** Alarm in is detected.
- Alarm Out:** Alarm out is detected.

---

**Note** Devices are displayed as **Irregular** based on the system check settings and as **Video Loss**, **Motion**, **Alarm In**, and **Alarm Out** based on the event detection settings on the remote DVR.

---

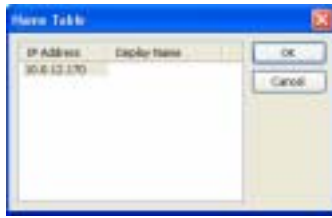
---

**Note** The device displays mixed colors when detecting more than two statuses at the same time.

---

**Name Table** Select **Name Table...** in the **Option** menu to display the name instead of the IP address of the DVR on the Map panel. *Figure C-8* appears.

**Figure C-8 Name Table Window**



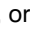


Click the **Display Name** field of each IP address and enter the name of the DVR to display on the popup screen.

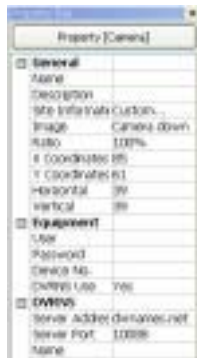
---

## Device Setting

---

1. Selecting , , or  on the toolbar displays the **Camera**, **AlarmOut** and **AlarmIn** tabs under the **Image Bar**.
2. Select the icons, and drag and drop them at the desired locations on the background image.
3. Go to the **Property [Camera/AlarmOut/AlarmIn]** tab and set the device information.

**Figure C-9 Property [Camera/AlarmOut/AlarmIn] Tab**



**Table C-1 Property Tab Device Information**

Property	Description
<b>General</b>	
Name	Enter a device name.
Description	Enter a description of the device.

**Table C-1 Property Tab Device Information**

<b>Property</b>	<b>Description</b>
Site Information	Select a proper site for the device in the list, and the <b>Equipment</b> fields ( <b>User</b> , <b>Password</b> , <b>IP Address</b> and <b>Port</b> ) are filled automatically with the information set in <b>Site Information Setting...</b>
Image	Select an image of a device.
Ratio	Adjust the size of the device image.
X Coordinates / Y Coordinates	Adjust the position of the device image by clicking each field and changing the numbers.
Horizontal / Vertical	Adjust the size of the device image by clicking each field and changing the numbers.
Popup Camera	If the selected device is an alarm-in device, you can associate a camera with the sensor by entering the camera name. The camera name you enter should be the same as the camera name entered under the <b>Property [Camera] tab</b> . The Map panel pops up another screen and displays images of the camera associated with the sensor on the popup screen when an alarm-in event occurs.
<b>Equipment</b>	
IP Address / User / Password / Port	Each field is filled in automatically with the information (user ID, password, and port number) set in <b>Site Information Setting...</b> , or you can enter it manually.
Device No.	Set the device number ( <b>1 ~ 32</b> ) for each device. If the selected device is a camera, Device No. changes to Camera No.
DVRNS Use	Select <b>Yes</b> to use DVR Name Service, and the <b>DVRNS</b> field appears. Enter the IP address (or domain name) and the port number of the DVRNS server, and the name of the DVR registered on the DVRNS server.

---

**Note** You should not select numbers that are not supported for devices on the remote DVR when selecting **Device No.** Otherwise, the map cannot detect the device and it displays the device status as **Unplugged**. For example, the device number should be from 1 to 16 when the device is connected to a 16-channel DVR.

---



---

**Note** If you set the IP address and port number of the DVRNS server in **Site Information Setting...**, the DVRNS fields are filled with the information automatically.

---



---

**Note** The **DVRNS** function is supported only with the devices associated with a DVR providing the DVRNS (DVR Name Service) function.

---

4. Go to the **Event [Camera/AlarmOut/AlarmIn]** tab and set the option for the devices.

**Figure C-10 Event [Camera] Tab**



- **Event [Camera]:** Selecting an event from a drop-down list and checking the **Watch View Popup** box sets the Map panel to pop up another screen when an event occurs. Selecting **Click** from a drop-down list and checking the **Watch View Popup** box pops up another screen by clicking the mouse button on the camera icon on the Map panel regardless of event detection.

**Figure C-11 Event [AlarmOut] Tab**



- **Event [AlarmOut]:** Checking the **Switch on/off** box controls the alarm-out remotely by clicking the alarm-out icon on the Map panel.

**Figure C-12 Event [AlarmIn] Tab**




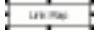
- **Event [AlarmIn]:** Selecting **Alarm-in Event** from the drop-down list and checking the **Watch View Popup** box sets the Map panel to pop up another screen when an alarm-in event occurs. Selecting **Click** from a drop-down list and checking the **Watch View Popup** box pops up another screen by clicking the mouse button on the alarm-in icon on the Map panel regardless of event detection.

---

**Note** The popup camera should be associated with the alarm in device to use the popup function. See *Popup Camera, Device Setting* on page 95 for the popup camera association.

---

## Link Setting

1. Click  (**Link**) on the toolbar and place it on the screen linked with a sub-map.
2. The **Link Map**  box appears. Select the individual link boxes by using the **Ctrl** key on the keyboard, and then adjust the size and position of the link box using a mouse, a keyboard or the icons shown below.



**Interval adjustment:** Equalizes the distance between three or more selected boxes.



**Size adjustment:** Equalizes the size of two or more selected boxes. Clicking the arrow keys while holding the **Shift** key on the keyboard changes the size of the selected boxes.



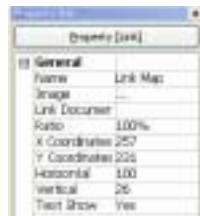
**Position adjustment:** Arranges two or more selected boxes towards one direction or towards the center. Clicking the arrow keys while holding the **Ctrl** key on a keyboard changes the position of selected boxes.



**Cut, Copy, Paste:** Cuts, copies or pastes the link box.


3. Go to the **Property [Link]** tab and set the properties of the selected link box.

**Figure C-13 Property [Link] Tab**



**Table C-2 Property Tab Device Information**

Property	Description
Name	Enter a name for the link box.
Image	Double-click the field and select an image to insert in the link box.
Link Document	Double-click the field and select a map to be linked with the link box.
Ratio	Adjust the image size within the link box.
X Coordinates / Y Coordinates	Adjust the position of the link box on the screen by clicking each field and changing the numbers.
Horizontal / Vertical	Adjust the link box size by clicking each field and changing the numbers.
Text Show	Select <b>Yes</b> to display the name of the link box on the selected image.

4. Click  (**Save**) on the toolbar to save the map.

## Map Editor

You can monitor the remote sites by using the map. See *Map Panel* on page 28 for more information.





**Honeywell Security Group (Head Office)**

2700 Blankenbaker Pkwy, Suite 150

Louisville, KY 40299, USA

[www.honeywellvideo.com](http://www.honeywellvideo.com)

☎ +1.800.796.2288

**Honeywell Security Group Europe/South Africa**

Aston Fields Road, Whitehouse Ind Est

Runcorn, Cheshire, WA7 3DL, UK

[www.honeywell.com/security/uk](http://www.honeywell.com/security/uk)

☎ +44.01928.754028

**Honeywell Security Group Caribbean/Latin America**

9315 NW 112th Ave.

Miami, FL 33178, USA

[www.honeywellvideo.com](http://www.honeywellvideo.com)

☎ +1.305.805.8188

**Honeywell Security Group Pacific**

Level 3, 2 Richardson Place

North Ryde, NSW 2113, Australia

[www.honeywellsecurity.com.au](http://www.honeywellsecurity.com.au)

☎ +61.2.9353.7000

**Honeywell Security Group Asia**

35F Tower A, City Center, 100 Zun Yi Road

Shanghai 200051, China

[www.asia.security.honeywell.com](http://www.asia.security.honeywell.com)

☎ +86 21.5257.4568

**Honeywell Security Group Middle East/N. Africa**

Post Office Box 18530

LOB Building 08, Office 199

Jebel Ali, Dubai, United Arab Emirates

[www.honeywell.com/security/me](http://www.honeywell.com/security/me)

☎ +971.04.881.5506

**Honeywell Security Group Northern Europe**

Ampèrestraat 41

1446 TR Purmerend, The Netherlands

[www.honeywell.com/security/nl](http://www.honeywell.com/security/nl)

☎ +31.299.410.200

**Honeywell Security Group Deutschland**

Johannes-Mauthe-Straße 14

D-72458 Albstadt, Germany

[www.honeywell.com/security/de](http://www.honeywell.com/security/de)

☎ +49.74 31.8 01.0

**Honeywell Security Group France**

Immeuble Lavoisier

Parc de Haute Technologie

3-7 rue Georges Besse

92160 Antony, France

[www.honeywell.com/security/fr](http://www.honeywell.com/security/fr)

☎ +33.(0).1.40.96.20.50

**Honeywell Security Group Italia SpA**

Via della Resistenza 53/59

20090 Buccinasco

Milan, Italy

[www.honeywell.com/security/it](http://www.honeywell.com/security/it)

☎ +39.02.4888.051

**Honeywell Security Group España**

Mijancas 1. 3a planta

P. Ind. Las Mercedes

28022 Madrid, Spain

[www.honeywell.com/security/es](http://www.honeywell.com/security/es)

☎ +34.902.667.800

# Honeywell

[www.honeywellvideo.com](http://www.honeywellvideo.com)  
+1.800.796.CCTV (North America only)  
[HVSsupport@honeywell.com](mailto:HVSsupport@honeywell.com)

Document 800-05056 – Rev C – 11/09

© 2009 Honeywell International Inc. All rights reserved. No part of this publication may be reproduced by any means without written permission from Honeywell. The information in this publication is believed to be accurate in all respects. However, Honeywell cannot assume responsibility for any consequences resulting from the use thereof. The information contained herein is subject to change without notice. Revisions or new editions to this publication may be issued to incorporate such changes.

## Free Manuals Download Website

<http://myh66.com>

<http://usermanuals.us>

<http://www.somanuals.com>

<http://www.4manuals.cc>

<http://www.manual-lib.com>

<http://www.404manual.com>

<http://www.luxmanual.com>

<http://aubethermostatmanual.com>

Golf course search by state

<http://golfingnear.com>

Email search by domain

<http://emailbydomain.com>

Auto manuals search

<http://auto.somanuals.com>

TV manuals search

<http://tv.somanuals.com>