



Access Point AP-010BT/AP-100BT

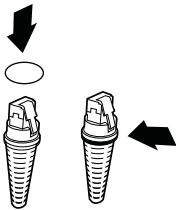
Quick Start Guide



Acc-Pt-QS Rev D
1/15

Connecting the Access Point

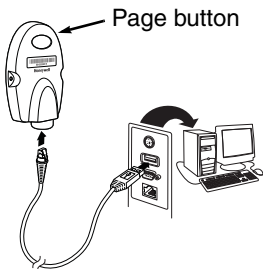
1. Slide the O-ring into the groove in the connector.



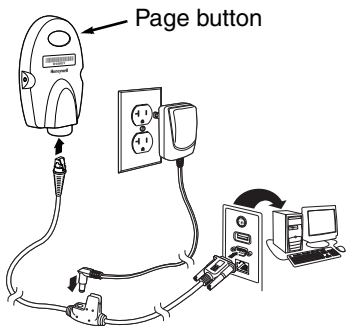
Note: If you choose not to install the O-ring, the Access Point will be rated to IP41, instead of IP54.

2. Plug the interface cable into the Access Point first and then into the appropriate port on the computer. The Page button blinks when the Access Point is first connected to the host.
3. Turn on the computer (laptop/desktop).

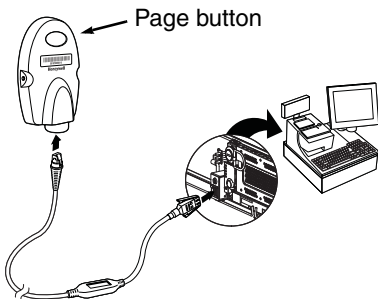
USB Connection:



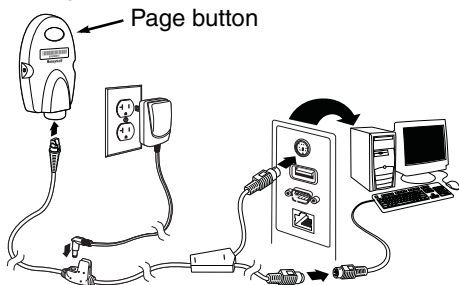
RS232 Connection:



RS485 Connection:

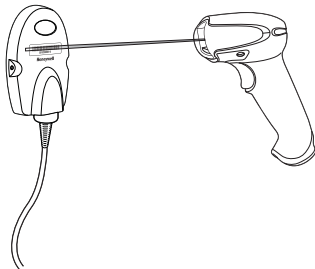


Keyboard Wedge Connection:



Linking a Xenon/Granit Scanner

4. Scan the linking bar code on the top of the Access Point to establish a connection between the Access Point and the scanner. The scanner emits a short beep and flashes the green LED to confirm a connection with the Access Point. The Access Point's Page button light turns solid blue.



Linking a 4820 Scanner

5. Remove the 4820 Linking bar code from the Access Point kit and attach it to the Access Point. Scan the 4820 Linking bar code to establish a connection between the Access Point and the 4820 scanner. The scanner emits a short beep and flashes the green LED to confirm a connection with the Access Point. The Access Point's Page button remains blue.

If you have difficulty connecting with your 4820, it may be due to Code XML software in your scanner. Scan the following bar code, then scan the 4820 Linking bar code. These steps may resolve this connection problem.



Code XML Off

Managing Connections

Auto Reconnect Mode

By default, the Access Point is set to **Auto Reconnect On**, so the scanner begins the relink process immediately, when a connection to the Access Point is lost. If you do not want to relink automatically, scan the **Auto Reconnect Off** bar code.



*** Auto Reconnect On**



Auto Reconnect Off

Changing Batteries

If the scanner turns off due to a low battery, you can change the battery without losing the link with the Access Point, provided the scanner is in range. A few seconds after the scanner powers up, the scanner relinks to the Access Point. Refer to your User's Guide at www.honeywellaidc.com for additional information about charging the batteries.

Low Power Mode

When there is no activity within a specified time period, the scanner enters a low power mode. The default time out period is one hour. Pull the scanner's trigger to power the scanner back up. If the scanner was linked to the Access Point when it went to "sleep," it will re-link as long as it is in range.

If multiple scanners use the same Access Point, it is possible to inadvertently unlink a scanner that is in "sleep" mode, that has a dead battery, or is in the process of getting a new battery. To prevent this from happening, you can disable the sleep mode (time out) by scanning the **No Time Out** bar code below.



No Time Out (0)

Unlinking the Scanner from Access Point

If you know that your scanner is not going to be used for a while, you can unlink the scanner by scanning the **Unlink Scanner** bar code below.

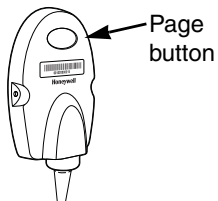


Unlink Scanner

Page Button

Note: This feature does not apply to 4820 scanners.

When you press the Page button on the Access Point, the scanners associated with that Access Point will begin beeping (3 short and 1 long beep). If you pull the trigger on a scanner that is beeping in response, or press the Page button on the Access Point a second time, all associated scanners will stop beeping.



LED Dimmer

Scan a bar code to set the brightness of your Page button.



LED Dimmer Off



LED Dimmer - Low



LED Dimmer - Bright

Adding Carriage Return Suffix

If you want a carriage return (CR) to display after the bar code data on your output scan the **Add CR Suffix** bar code below. Scan the **Clear All Suffixes** bar code to remove suffixes.



Add CR Suffix



Clear All Suffixes

Standard Product Defaults

This bar code resets all standard product default settings.

Note: Resetting standard defaults disconnects the scanner from the Access Point. Scan the Linking bar code to re-establish a connection. Refer to your User's Guide at www.honeywellaidc.com for additional information about product defaults.

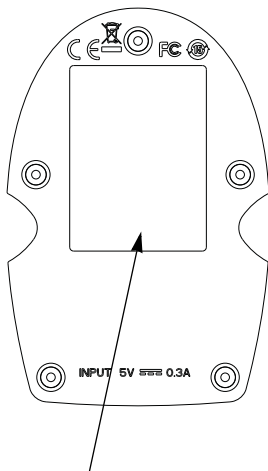


Standard Product Default Settings

Additional Programming

The Access Point has all the programming capability of a Cordless Charge Base. Refer to Cordless System Operation information in your User's Guide at www.honeywellaidc.com for programming information.

Required Safety Labels



Label location for item number, serial number, revision information, compliance, and safety information

Product Specifications

Parameter	Specification
Dimensions (Typical):	
Height	1.1 inch (28mm)
Length	4.3 inches (109mm)
Width	2.8 inches (71mm)
Weight	2.3 ounces (66g)
Voltage Requirements	5 VDC \pm 0.5V
Current Draw	100mA @ 5 volts typical 300mA @ 5 volts maximum
Temperature Ranges:	
Operating	32° F to +122° F (0° C to +50° C)
Storage	-40° F to +158° F (-40° C to +70° C)
Radio:	
Frequency	2.4 to 2.5 GHz (ISM Band) Frequency Hopping Bluetooth v.2.1
Range - AP-010BT	33 ft. (10m) typical
Range - AP-100BT	328 ft. (100m) typical
Data Rate	Up to 1MBps
Humidity	5 to 95% non-condensing
Mechanical Drop	Operational after 50 drops from 3.28 feet (1 m) to concrete
Vibration	5G Peak from 22Hz to 300Hz
ESD Sensitivity	Up to 15kV direct air Up to 8 kV indirect coupling plane

Technical Assistance

Contact information for technical support and product service can be found at www.honeywellaidc.com.

Limited Warranty

Refer to www.honeywellaidc.com/warranty_information for your product's warranty information.

Product Agency Compliance - AP-010BT/AP-100BT

USA

FCC Part 15

This device complies with part 15 of the FCC Rules. Operation is subject to the following two conditions:

- 1, This device may not cause harmful interference.
2. This device must accept any interference received, including interference that may cause undesired operation.

This equipment has been tested and found to comply with the limits for a Class B digital device pursuant to part 15 of the FCC Rules. These limits are designed to provide reasonable protection against harmful interference in a residential installation. This equipment generates, uses, and can radiate radio frequency energy and, if not installed and used in accordance with the instructions, may cause harmful interference to radio communications. However, there is no guarantee that interference will not occur in a particular installation. If this equipment does cause harmful interference to radio or television reception, which can be determined by turning the equipment off and on, the user is encouraged to try to correct the interference by one or more of the following measures:

- Reorient or relocate the receiving antenna.
- Increase the separation between the equipment and receiver.
- Connect the equipment into an outlet on a circuit different from that to which the receiver is connected.
- Consult the dealer or an experienced radio or television technician for help.

If necessary, the user should consult the dealer or an experienced radio/television technician for additional suggestions. The user may find the following booklet helpful: "Something About Interference." This is available at FCC local regional offices. Honeywell is not responsible for any radio or television interference caused by unauthorized modifications of this equipment or the substitution or attachment of connecting cables and equipment other than those specified by Honeywell. The correction is the responsibility of the user.

Use only shielded data cables with this system.

Caution: Any changes or modifications made to this equipment not expressly approved by Honeywell may void the FCC authorization to operate this equipment.



UL listed: UL60950-1.

Canada

Industry Canada

This device complies with Canadian RSS-210. Operation is subject to the following conditions:

1. This device may not cause interference.
2. This device must accept any interference, including interference that may cause undesired operation.

Conformité à la réglementation canadienne

Cet appareil ISM est conforme à la norme CNR-210 du Canada. Son fonctionnement est assujéti aux conditions suivantes :

1. Cet appareil ne doit pas causer de brouillage préjudiciable.
2. Cet appareil doit pouvoir accepter tout brouillage reçu, y compris le brouillage pouvant causer un fonctionnement indésirable.



C-UL listed: CSA C22.2 No.60950-1-07 for I.T.E product safety.

Europe



The CE marking on the product indicates that this device is in conformity with all essential requirements of the 1999/5/EC R&TTE Directive and 2011/65/EU RoHS directive. In addition, complies to 2006/95/EC Low Voltage Directive, when shipped with recommended power supply. European contact:

Hand Held Products Europe B.V.
Nijverheidsweg 9-13
5627 BT Eindhoven
The Netherlands

Honeywell shall not be liable for use of our product with equipment (i.e., power supplies, personal computers, etc.) that is not CE marked and does not comply with the Low Voltage Directive.

Honeywell Scanning & Mobility Product Environmental Information

Refer to www.honeywellaidc.com/environmental for the RoHS / REACH / WEEE information.

Product Agency Compliance - AP-010BT



Bluetooth® Class II

Brazil



Product Agency Compliance - AP-100BT



Bluetooth® Class I

Patents

For patent information, please refer to www.hsmpats.com.

Disclaimer

Honeywell International Inc. (“HII”) reserves the right to make changes in specifications and other information contained in this document without prior notice, and the reader should in all cases consult HII to determine whether any such changes have been made. The information in this publication does not represent a commitment on the part of HII.

HII shall not be liable for technical or editorial errors or omissions contained herein; nor for incidental or consequential damages resulting from the furnishing, performance, or use of this material.

This document contains proprietary information that is protected by copyright. All rights are reserved. No part of this document may be photocopied, reproduced, or translated into another language without the prior written consent of HII.

© 2010-2015 Honeywell International Inc. All rights reserved.

Other product names or marks mentioned in this document may be trademarks or registered trademarks of other companies and are the property of their respective owners.

Web Address: www.honeywellaidc.com

Free Manuals Download Website

<http://myh66.com>

<http://usermanuals.us>

<http://www.somanuals.com>

<http://www.4manuals.cc>

<http://www.manual-lib.com>

<http://www.404manual.com>

<http://www.luxmanual.com>

<http://aubethermostatmanual.com>

Golf course search by state

<http://golfingnear.com>

Email search by domain

<http://emailbydomain.com>

Auto manuals search

<http://auto.somanuals.com>

TV manuals search

<http://tv.somanuals.com>