
OWNER'S MANUAL

ELECTRIC CHAIN HOIST ES3 and NES SERIES

1/4 Ton through 5 Ton Capacity

Model, Lot, and Serial Number

⚠ WARNING

This equipment should not be installed, operated or maintained by any person who has not read and understood all the contents of this manual. Failure to read and comply with the contents of this manual can result in serious bodily injury or death, and/or property damage.

HARRINGTON
HOISTS AND CRANES

Harrington Hoists, Inc. disclaims any and all other warranties of any kind expressed or implied as to the product's merchantability or fitness for a particular application. Harrington will not be liable for death, injuries to persons or property or for incidental, contingent, special or consequential damages, loss or expense arising in connection with the use or inability whatever, regardless of whether damage, loss or expense results from any act or failure to act by Harrington, whether negligent or willful, or from any other reason.

8.0 Parts List

Parts list for the ES/NES hoist follows in sections 8.1 through 8.7.

The letters S and L in the hoist capacity designation (e.g. 1-S, 2-L) indicate Standard or Low lifting speed. Standard speed hoists will be single fall hoists and Low speed hoists will be double fall hoists, except for the 3 ton and 5 ton, which are Standard speed hoists that are double fall.

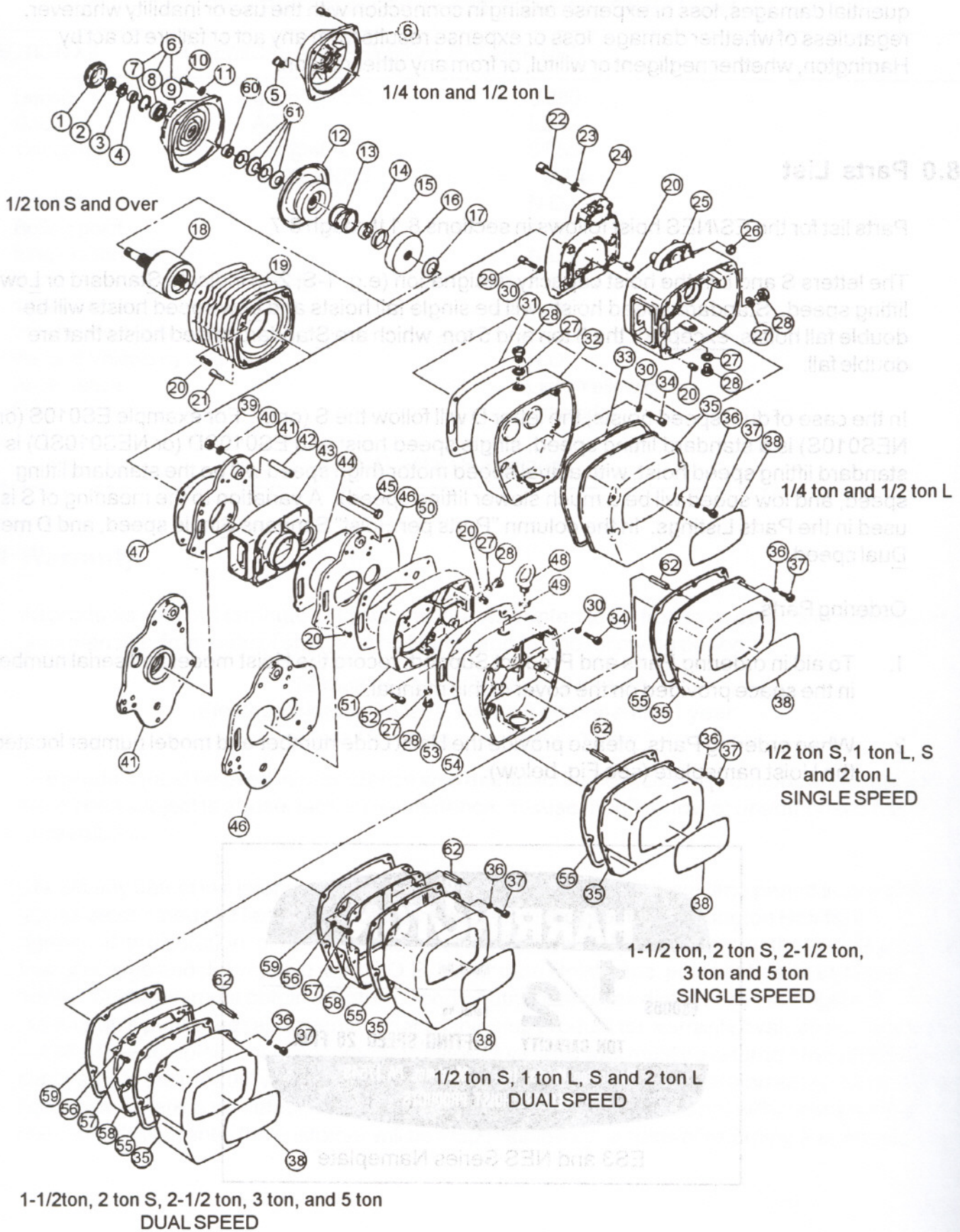
In the case of dual speed hoists, the letter D will follow the S (or L). For example ES010S (or NES010S) is a standard lifting speed, single speed hoist and ES010SD (or NES010SD) is a standard lifting speed hoist, with a dual speed motor (high speed will be the standard lifting speed, and low speed will be a much slower lifting speed). A variation to the meaning of S is used in the Parts Listings. In the column "Parts per Hoist" S means Single speed, and D means Dual speed.

Ordering Parts

1. To aid in ordering Parts and Product Support, record the Hoist model and serial numbers in the space provided on the cover of this manual.
2. When ordering Parts, please provide the Hoist code number and model number located on the Hoist nameplate (see Fig. below).



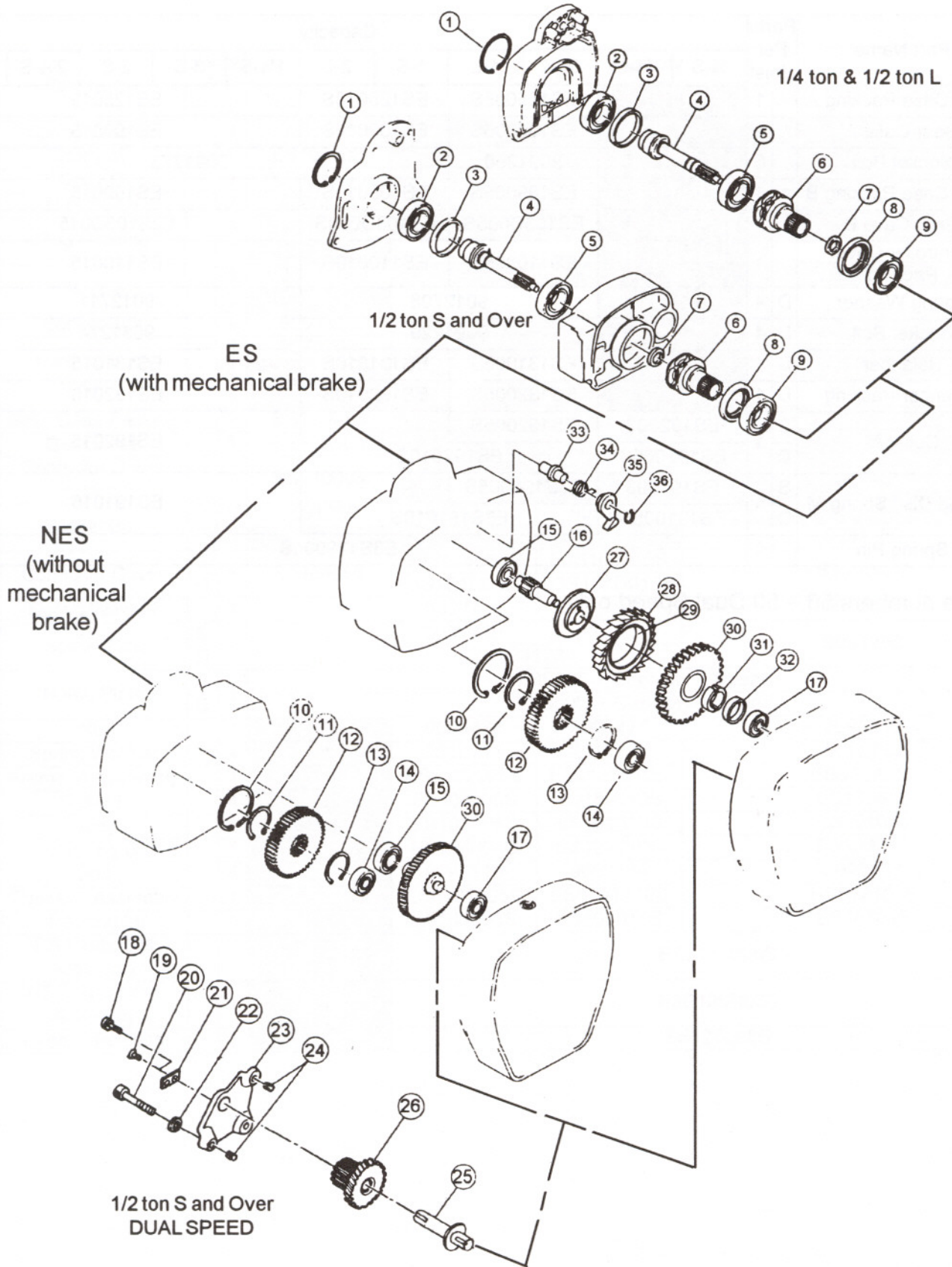
8.1 HOUSING AND MOTOR PARTS



8.1 HOUSING AND MOTOR PARTS

Fig. No.	Part Name	Parts Per Hoist	Capacity											
			¼-S	½-L	½-S	1-L	1-S	2-L	1½-S	3-S	2-S	2½-S	5-S	
1	Cover	S	ES108003								ES108015			
		D					ES1080101S							
2	Nut	S	ES217003		ES217005S						ES217015			
		D	ES217005S		ES217010S									
3	Lock Washer	S	ES218003		ES218005S						ES218015			
		D	ES218005S		ES218010S									
4	Spacer	S	ES216S003		ES216S005						ES216S015			
		D	ES216S005		ES216S010									
5	Plug	1	ES113003											
6	ES Motor Cover Assembly	S	ES5106S003		E3S5106005S		E3S510601S		E3S5106015					
		D	ES5106S005		E3S5106D005S		E3S5106D010S		E3S5106D015					
	NES Motor Cover Assembly	S	ES5106S003		E3S5106N005S		E3S5106N010S		E3S5106N015					
7	Snap Ring	S	9047235		9047240						9047262			
		D	9047240		9047247									
8	Ball Bearing	S	9001002		9001003						9001006			
		D	9001003		9001004									
10	Socket Bolt	S	9091249		9091273						90912114			
		D	9091272		9091294									
11	Spring Washer	S			9012711						9012713			
		D			9012712									
12	ES Brake Drum Assembly	S	ES5212003		E3S5212005S		E3S5212010S		E3S5212015					
		D	ES5212005S		E3S5212D005S		E3S5212D010S		E3S5212D015					
	NES Brake Drum Assembly	S	ES5212003		E3S5212N005S		E3S5212N010S		E3S5212N015					
13	Brake Spring	S	ES214003		ES214005S		ES214010S		ES214015					
		D	ES214D003		ES214D005S		ES214D010S		ES214D015					
14	Thrust Disc	S	ES505003				ES505010S		ES505015					
		D	ES505005S											
15	Thrust Collar	S	ES506003				ES506010S		ES506015					
		D	ES506005S											
16	Pull Rotor	S	ES503003				ES503010S		ES503015					
		D	ES503005S											
17	Coned Disc Spring	S	ES504003				E3S504010S		E3S504015					
		D	ES504005S											
18	Motor Shaft / Rotor	S	ES5502003		ES5502005S		ES5502010S		ES5502015					
		D	ES5502D003		ES5502D005S		ES5502D010S		ES5502D015					
19	Motor Frame / Stator	S	E3S5501003		E3S5501005S		E3S5501010S		E3S5501015					
		D	E3S5501D003		E3S5501D005S		E3S5501D010S		E3S5501D015					
20	Set Pin	4	ES120003											
		6			ES120003				ES120010S					
21	Socket Bolt	4	9091250		9091272		9091293		90912113					
22	Socket Bolt	2	9091257											

8.2 GEARING PARTS



8.1 HOUSING AND MOTOR PARTS

Fig. No.	Part Name	Parts Per Hoist	Capacity									
			¼-S	½-L	½-S	1-L	1-S	2-L	1½-S	3-S	2-S	2½-S
23	Spring Washer	2	9012709									
24	Body M	1	ES102003									
25	Body G	1	ES101003									
26	U Nut/Cap	2	9098504									
27	Plug Packing	3	E3S112003									
		2	E3S112003									
28	Oil Plug	3	E3S111003									
		2	E3S111003									
29	Socket Bolt	2	9091252									
30	Toothed Lock Washer	6	9679709									
		4	9679709			9679711						
		5								9679711		
		4										
31	Gear Case Packing	1	ES109003									
32	Gear Case	1	ES103003									
33	Controller Cover Packing	1	ES110003									
34	Socket Bolt	4	9091253		9091255		9091279					
		5								9091280		
35	Controller Cover	S	ES104003	E3S104005S		E3S104010S		E3S10415				
		D		E3S104D005S		E3S104D010S						
36	Spring Washer	4	9012708					9012709				
37	Socket Bolt	S	9091229					9091250				
		D	9091230									
38	Name Plate	S	E3S800 + Capacity + Speed									
		D	ES800D + Capacity + Speed									
39	Nut	4			9093424		9093427		9093433			
40	Spring Washer	4			9012711		9012712		9012713			
41	Frame M Assembly	1			ES5122005S		ES5122010S		ES5122015			
42	Collar F	4			ES180005S		ES180010S		ES180015			
43	Body	1			ES101005S		ES101010S		ES101015			
44	Packing G	1			ES124005S		ES124010S		ES124015			
45	Bolt	4			9093110		9093134		9093158			
46	Frame G Assembly	1			ES5121005S		ES5121010S		ES5121015			
47	Packing M	1			ES163005S		ES163010S		ES163015			
48	ES Eyebolt M Assembly	1	ES5126005S									
	NES Eyebolt M Assembly	1	E3S126N003									
49	Eyebolt Packing	1	ES127005S									

8.1 HOUSING AND MOTOR PARTS

Fig. No.	Part Name	Parts Per Hoist	Capacity										
			¼-S	½-L	½-S	1-L	1-S	2-L	1½-S	3-S	2-S	2½-S	5-S
50	Gear Case Packing A	1			ES125005S		ES125010S					ES125015	
51	Gear Case A	1			ES100005S		ES100010S					ES100015	
52	Socket Bolt	6			9091250						9091273		
53	Gear Case Packing B	1			ES109005S		ES109010S					ES109015	
54	Gear Case B	1			ES103D005S		ES103D010S					E3S103D015	
55	Controller Cover Packing	1			ES110005S		ES110010S					ES110015	
*56	Spring Washer	D 4					9012708					9012711	
*57	Socket Bolt	D 4					9091229					9091274	
*58	Balancer	D 1			ES131005S		ES131010S					ES131015	
*59	Balancer Packing	D 1			ES132005S		ES132010S					ES132015	
60	Collar M	S	1	ES192003	ES192005S							ES192015	
		D	1	ES192005S		ES192010S							
61	Coned Disc Spring M	S	4	ES191003	E3S191005S							ES191015	
		D	4	ES191005S		E3S191010S							
62	Spring Pin	1										E3S129005S	

* Figure numbers 56 – 59 Dual Speed only.

8.2 GEARING PARTS

Fig. No.	Part Name	Parts Per Hoist	Capacity									
			¼-S	¼-L	½-S	1-L	1-S	2-L	1½-S	3-S	2-S	2½-S
1	Snap Ring	1	9047247	9047268	9047275							
2	Ball Bearing	1	9000505	9000508	9000509							
3	Collar B	1	ES206003	ES206005S	ES206010S							
4	Pinion Assembly	1	ES1220003	E3S1220005S	E3S1220010S	E3S1220015						
5	Ball Bearing	1	9000505	9000508	9000509	9000610						
6	Load Sheave	1	ES228003	ES228005S	ES228010S	ES228015				ES228025		
7	Oil Seal	1	ES221003	ES221005S	ES221010S	ES221015						
8	Oil Seal	1	ES232003	ES232005S	ES232010S	ES232015						
9	Ball Bearing	1	9000107			9000108	9000110					
10	Snap Ring	1	9047262									
11	Snap Ring	1	9047135									
12	Load Gear	S	ES227003	E3S227005S	E3S227010S	E3S227015	E3S22-7020S	E3S227025				
		D	ES227D003									
13	Snap Ring	1	9047135			9047140	9047150					
14	Ball Bearing	1	9000201			9000202	9000303					
15	Ball Bearing	1	9000103	9000104	9000304	9000405						
16	Gear #3	S	ES224003	E3S224005S	E3S224010S	E3S224015	E3S22-4020S	E3S224025				
		D	ES224D003									
17	Ball Bearing	1	9000201	9000202	9000203	9000204						
*18	Machine Screw with Spring Washer	D							MS554010			
*19	Flat Head Machine Screw	D				9798532						
*20	Socket Bolt	D			9091252	9091274	9091275					
*21	Plate	D					ES244005S		ES244015			
*22	Spring Washer	D			9012709	9012711						
*23	Gear Holder-Plate	D			ES243005S	ES243010S	ES243015					
*24	Set Pin	D			ES120003	ES120010S						
*25	Gear B Shaft	D			ES242005S	ES242010S	ES242015					
*26	Gear B Assembly	D			E3S5241005S	E3S5241010S	E3S5241015					
27	Friction Disc	1	ES265003	E3S265005S	E3S265010S	E3S265015						
28	Ratchet Disc Assembly	1	E3S1263003	E3S1263005S	E3S1263010S	E3S1263015						
29	Bushing	1			E3S264005S	E3S264010S	E3S264015					
30	ES Gear #2	S	ES223003	E3S223005S	E3S223010S	E3S223015						
		D		E3S223D005S	E3S223D010S	E3S223D015						
30	NES Gear #2	S	E3S5223N003	E3S5223N005S	E3S5223N010S	E3S5223N015	E3S5223-N020S	E3S5223N025				
		D	E3S5223ND003	E3S5223ND005S	E3S5223ND010S	E3S5223ND015	E3S5223-ND020S	E3S5223ND025				

8.2 GEARING PARTS

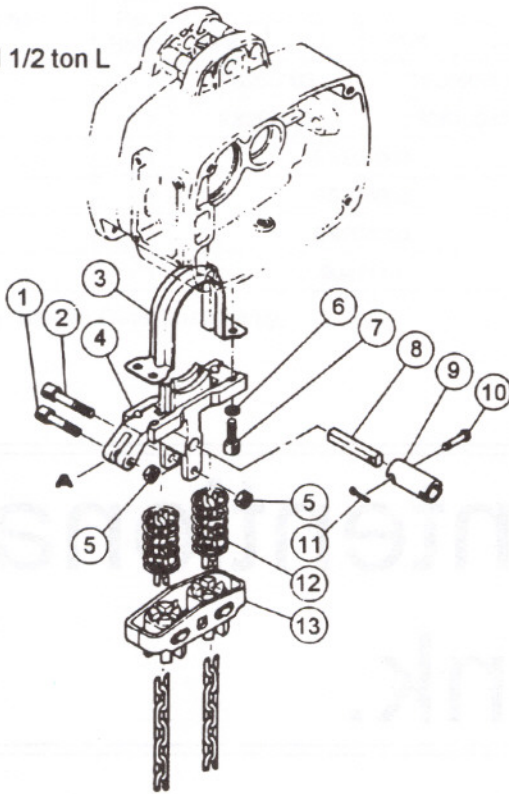
Fig. No.	Part Name	Parts Per Hoist	Capacity											
			¼-S	½-L	½-S	1-L	1-S	2-L	1½-S	3-S	2-S	2½-S	5-S	
31	Thrust Disc	2	ES266003		E3S266005S		E3S266010S				E3S266015			
32	Thrust Collar	1	ES267003		ES267005S		ES267010S				ES267015			
33	Pawl Pin	1		ES269003							ES269010S			
34	Pawl Spring	1		ES270003							ES270010S			
35	Pawl	1		ES268003							ES268010S			
36	Snap Ring	1		9047114							9047116			

*Figure numbers 18 - 26 Dual Speed only.

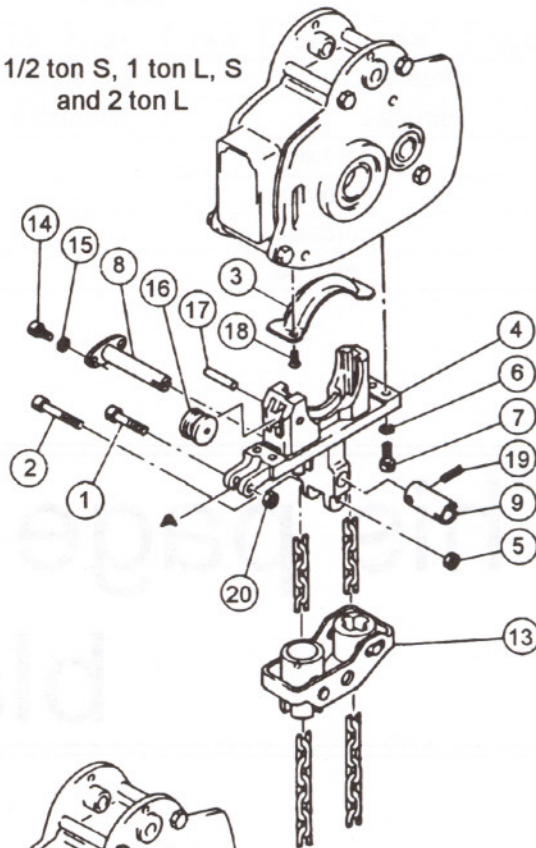
**This page intentionally
blank.**

8.3 CHAINING PARTS

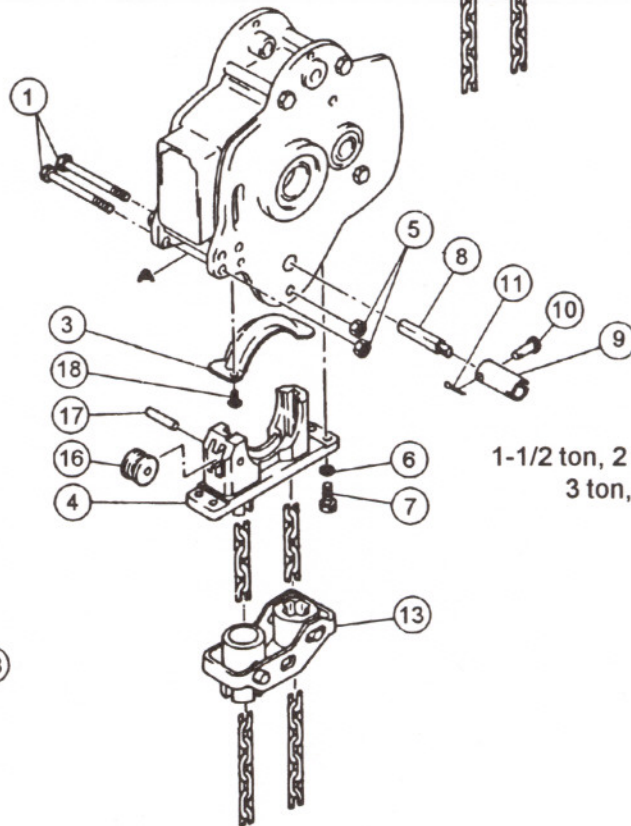
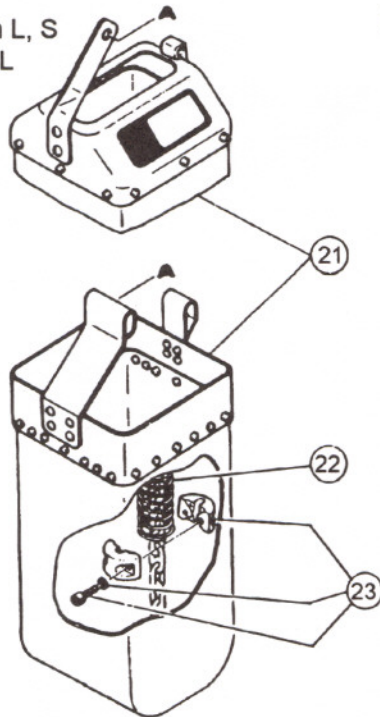
1/4 ton and 1/2 ton L



1/2 ton S, 1 ton L, S
and 2 ton L



1/4 ton - 1 ton L, S
and 2 ton L



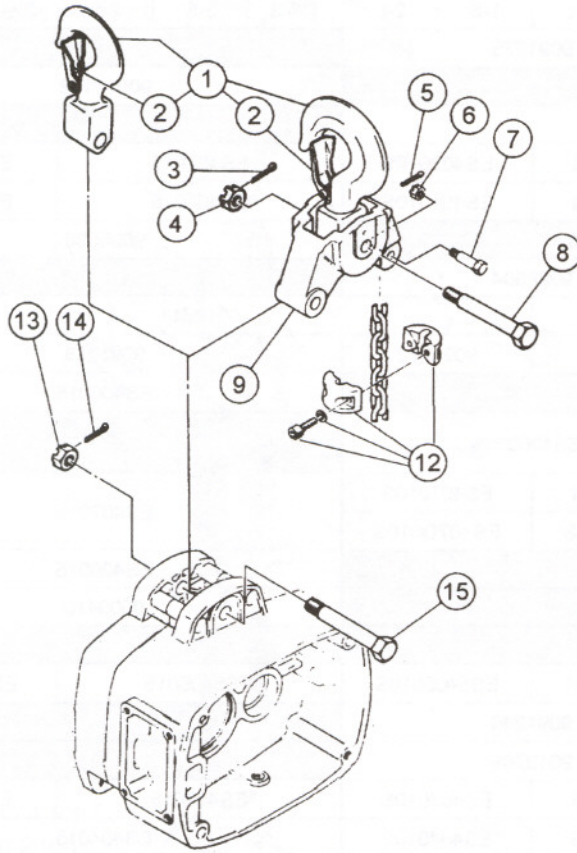
1-1/2 ton, 2 ton S, 2-1/2 ton,
3 ton, and 5 ton

1-1/2 ton, 2 ton S, 2-1/2 ton,
3 ton, and 5 ton

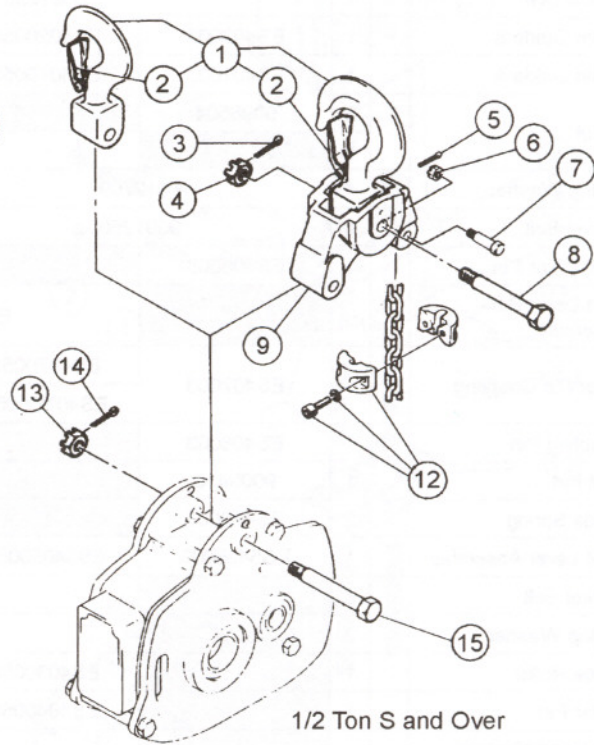
8.3 CHAINING PARTS

Fig. No.	Part Name	Parts Per Hoist	Capacity										
			¼-S	½-L	½-S	1-L	1-S	2-L	1½-S	3-S	2-S	2½-S	5-S
1	Socket Bolt	1	9091253	9091275									
	Bolt	2					90912108						
2	Socket Bolt	1	9091255										
3	Chain Guide B	1	ES402003	ES402005S		ES402010S		ES402015		ES402025			
4	Chain Guide A	1	ES401003	ES401005S		ES401010S		ES401015		ES401025			
5	U Nut	2	9098504					9098508					
		1	9098504										
6	Spring Washer	4	9012709				9012711						
7	Socket Bolt	4	9091250				9091272		9091273				
8	Limit Lever Pin	1	ES406003					ES406015					
	Limit Lever Pin Assembly		ES5406005S										
9	Lever Pin Coupling	S	ES407003	ES407005S		ES407010S		ES407015					
		D		ES407D005S		ES407D010S							
10	Coupling Pin	1	ES408003					ES408015					
11	Split Pin	1	9009410					9009410					
12	Guide Spring	2	ES410003										
13	Limit Lever Assembly	1	ES5405003	ES5405005S		ES5405010S		ES5405015		ES5405025			
14	Socket Bolt	2	9091246										
15	Spring Washer	2	9012709										
16	Guide Roller	1			ES403005S		ES403010S		ES403015		ES403025		
17	Roller Pin	1			ES404005S		ES404010S		ES404015				
18	Flat Head Machine Screw	2					9798534						
	Machine Screw with Spring Washer						E6F151003						
19	Spring Pin	1					ES451005S						
20	U Nut	1	9098506										
21	Chain Container L	1	ES5830003	ES5830005S		ES5830010S		ES5830015					
22	Chain Spring	S	ES047003	ES047005S		ES047010S		ES047015		ES047025			
		D	ES047D003	ES047D005S		ES047D010S		ES047D015		ES047D025			
23	Stopper Assembly	1	ES1045003	ES1045005S				ES1045015		ES1045025			

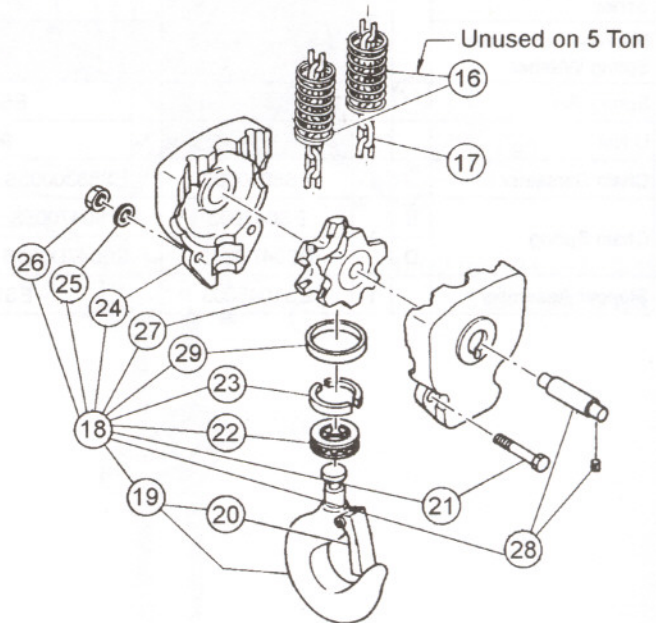
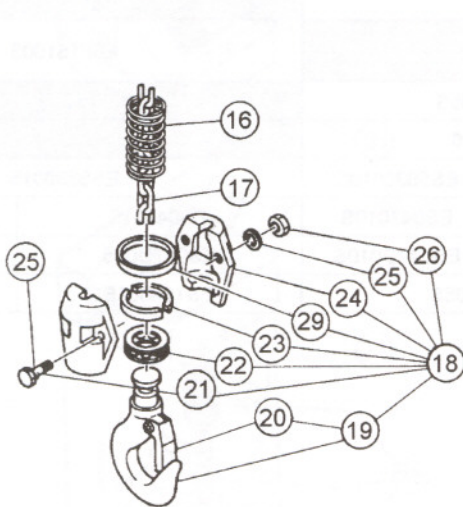
8.4 HOOK PARTS



1/4 Ton and 1/2 Ton L



1/2 Ton S and Over

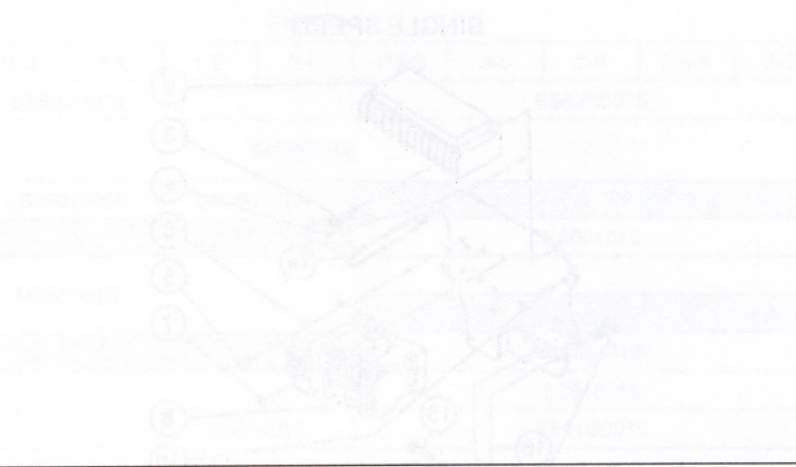


8.4 HOOK PARTS

Fig. No.	Part Name	Parts Per Hoist	Capacity											
			¼-S	½-L	½-S	1-L	1-S	2-L	1½-S	3-S	2-S	2½-S	5-S	
1	Top Hook Assembly	1	ES1001003			ES1001010L		ES1001015		ES100-1025	ES100-1015	ES100-1025	ES100-1050	
	2 Latch Assembly	1	CF071010			CF071015		CF071030		M3072-050	CF071-030	M3072-050	CF071-050	
3	Split Pin	1		9009414		9009414		9009425		9009425		9009426		
4	Slotted Nut	1		ES088-005L		ES088-005L		ES088-020L		ES088-020L		ES088-050		
5	Split Pin	1		9009403		9009403		9009413		9009413		9009415-5		
6	Slotted Nut	1		M3049005		M3049-005		M2049-101		M2049-020		M2049-030		
7	Chain Pin	1		ES0410-05L		ES0410-10L		ES041-020L		ES041-030		ES041-050		
8	Top Pin L	1		ES0060-05L		ES0060-05L		ES006-020L		ES006-020L		ES006-050		
9	Connection Yoke	1		ES0050-05L		ES0050-10L		ES005-020L		ES005-030		ES005-050		
12	Stopper Assembly	1		ES1045-003		ES1045-005S		ES104-5005S		ES104-5015		ES104-5025		
13	Slotted Nut	1	ES088005L					ES088020L						
14	Split Pin	1	9009414					9009425						
15	Top Pin	1	ES117003		ES117005S		ES117010S		ES117015					
16	Chain Spring	S	1	ES047-003		ES047-005S		ES047-010S		ES047-015		ES047-015	ES047025	
			2		ES047-003		ES047-005S		ES047-010S		ES047-015			
		D	1	ES047D003		ES047-D005S		ES047-D010S		ES047-D015		ES047-D015	ES047-D025	ES047-D050
			2		ES047-D003		ES047-D005S		ES047-D010S		ES047-D015			
17	Load Chain	Ft	LCER003C		LCER005C		LCES010		LCER020C		LCER025C			
18	Bottom Hook Complete Set	1	ES102-1003	ES102-1005L	ES102-1005S	ES102-1010L	ES102-1010S	ES102-1020L	ES102-1015	ES102-1030	ES102-1020S	ES102-1025	ES102-1050	
19	Bottom Hook Assembly	1	ES202-1003	ES2021005L		ES2021010L		ES202-1020S	ES202-1015	ES202-1030	ES202-1020S	ES202-1025	ES202-1050	
21	20 Latch Assembly	1	CF071010			CF071015		CF071-030	CF071-020	M3072-050	CF071030		CF071-050	
	High Strength Bolt	2	ES082-003		ES082-003		ES082-010S		ES082-015		ES082-015	ES082-025		
	Bolt	2		ES082-003		ES082-010S		ES082-010S						
		3								ES082-025			ES082-050	
22	Thrust Bearing	1	ES022003			ES022010L		ES022015		ES022-025	ES022-015	ES022-025	ES022-050	
23	Hook Stopper	2	ES027003			ES027010L		ES027015		ES027-025	ES027-015	ES027-025	ES027-050	
24	Bottom Yoke Assembly	1	ES032-003	ES032-005L	ES032-005S	ES032-010L	ES032-010S	ES032-020L	ES032-015	ES032-030	ES032-020S	ES032-025	ES032-050	
25	Spring Washer	2	9012709			9012711			901272-12		9012712	9012713		
		3								9012712			9012713	

8.4 HOOK PARTS

Fig. No.	Part Name	Parts Per Hoist	Capacity										
			¼-S	½-L	½-S	1-L	1-S	2-L	1½-S	3-S	2-S	2½-S	5-S
26	Nut	2	9093420			9093424			9093427		9093427	9093433	9093425
		3								9093427			
27	Idle Sheave Assembly	1		ES1051-005L		ES1051-010L		ES1051-020L		ES1051-030		ES1051-050	
28	Bottom Shaft Assembly	1		ES5054-005L		ES5054-010L		ES5054-020L		ES5054-030		ES5054-050	
29	Thrust Collar A	1	ES026003			ES026010L		ES026015		ES026-025	ES026-015	ES026-025	ES026-050

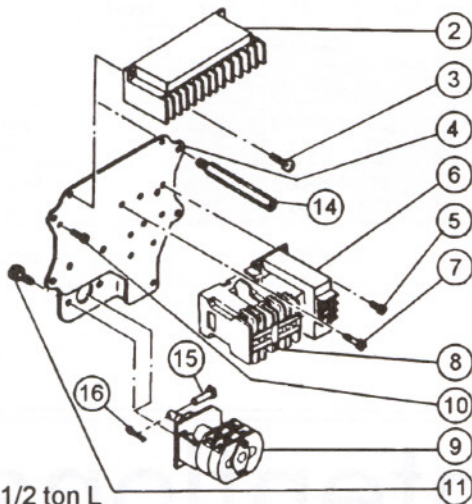


This page intentionally blank.



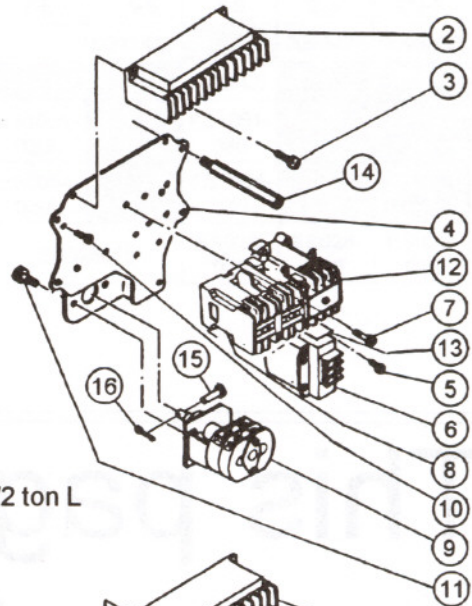
8.5 ELECTRIC PARTS

SINGLE SPEED

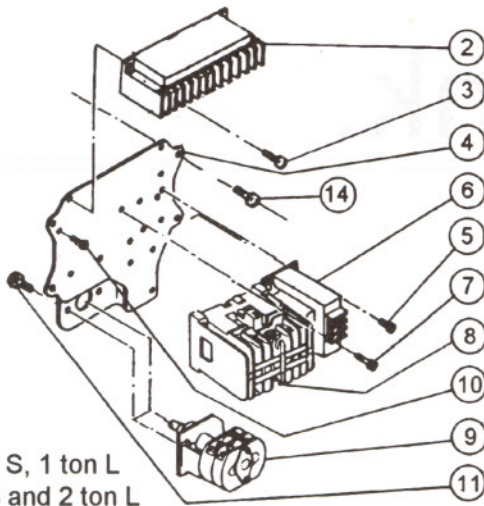


1/4 and 1/2 ton L

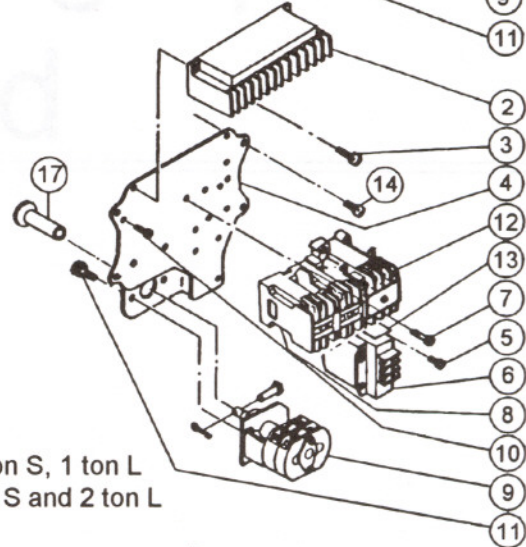
DUAL SPEED



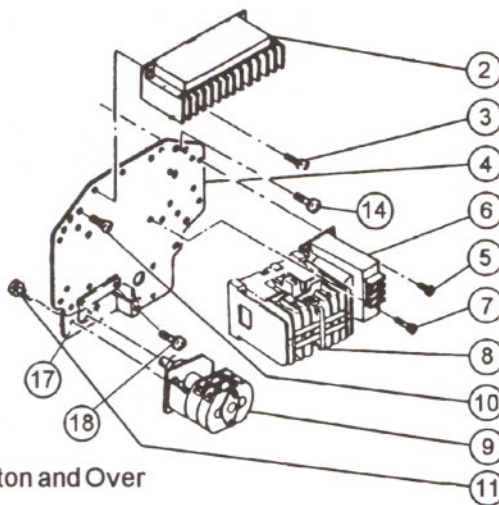
1/4 and 1/2 ton L



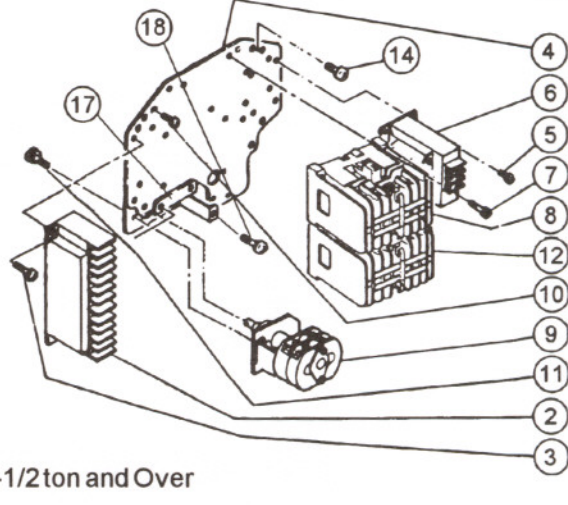
1/2 ton S, 1 ton L
1 ton S and 2 ton L



1/2 ton S, 1 ton L
1 ton S and 2 ton L



1-1/2 ton and Over



1-1/2 ton and Over

8.5 ELECTRIC PARTS

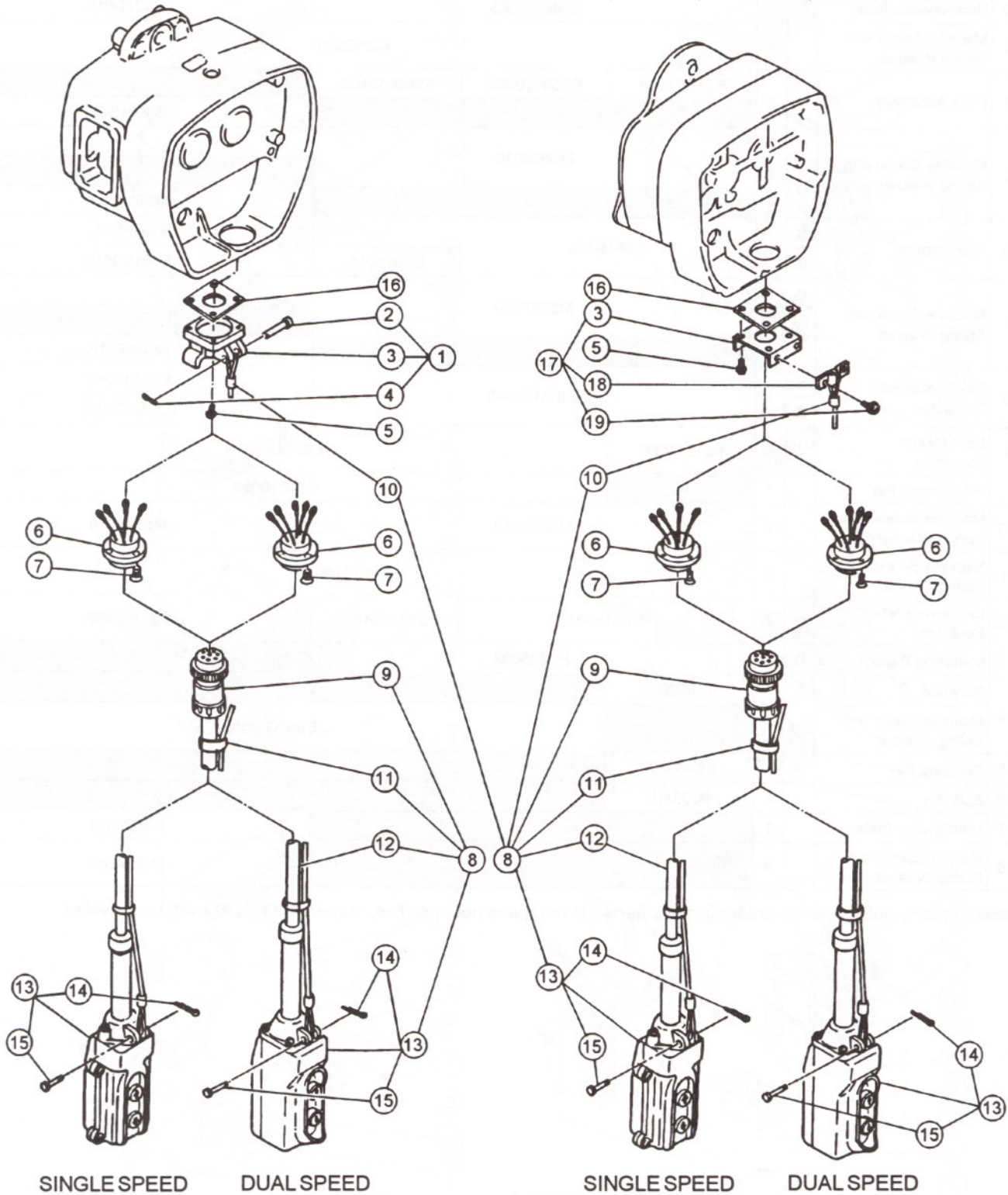
Fig. No.	Part Name	Parts Per Hoist	Capacity										
			¼-S	½-L	½-S	1-L	1-S	2-L	1½-S	3-S	2-S	2½-S	5-S
*2	Non-Reverse Relay	1	ES622D003						ES622D015				
3	Machine Screw with Spring Washer	2	MS555010										
4	Plate Assembly	1	ES5601003	ES5601005S	ES5601010S							ES601015	
5	Machine Screw with Spring Washer	S	MS555010										
		D							MS554010				
*6	Transformer	S	ES616003							ES616015			
		D					ES616015			ES616D015			
7	Machine Screw with Spring Washer	S	MS557010										
		D							MS557010				
*8	Electromagnetic Contactor	S	E3S617010S						E3S617015				
		D							E3S617D015				
9	Limit Switch Assembly	1	ES2619003	ES2619D015									
	9A Spring Pin	1	ES451005S										
10	Machine Screw with Spring Washer	1	MS555010						MS554010				
11	Machine Screw with Spring Washer	2	E6F151003										
*12	Electromagnetic Contactor	D	ES618003				ES618010S			E3S618015			
13	Insulating Paper	D	ES635003										
14	Stay Bolt	4	ES602003										
	Machine Screw with Spring Washer		ES650005S										
15	Coupling Pin	1	ES408003										
16	Split Pin	1	9009410										
17	Limit Switch Plate	1							ES620015				
18	Machine Screw with Spring Washer	3							MS554010				

*Please specify voltage when ordering these parts. If voltage is not specified, standard 230/460V will be provided.

8.6 CONTROL STATION PARTS

1/4 ton - 1 ton L, S and 2 ton L

1-1/2 ton, 2 ton S, 2-1/2 ton, 3 ton and 5 ton



8.6 CONTROL STATION PARTS

Fig. No.	Part Name	Parts Per Hoist	Capacity										
			¼-S	½-L	½-S	1-L	1-S	2-L	1½-S	3-S	2-S	2½-S	5-S
1	Socket Holder B Assembly	1	E3S1610003										
4	Machine Screw with Spring Washer	4	ES656003						M6F554010				
6	Socket 5P with 4 Leads	S	ES1614S015										
	Socket 5P with 5 Leads	D	ES1614D015										
7	Tapping Screw	4	ES558003										
	Flat Head Machine Screw								E3S658015				
8	2 Push Button Cord Complete Set	S	ES1605S003										
		D	ES1605D003										
9	Plug 5P	1	E3S613003*										
12	Push Button Cord 3C	S	16/3P										
	Push Button Cord 4C	D	16/4P										
13	2 Push Button Switch Assembly	S	ES1615S003										
	2 Push Button Switch Assembly	D	ES1615D003										
14	Split Pin	1	9009402										
15	Cord Chain Pin	1	ES628003										
16	Socket Holder Packing	1	E3S609003						E3S609015				
17	Socket Holder B Assembly	1							E3S1610015				

* For cable with chain strain relief, use part number ES613003 for the correct 5P plug.

8.7 POWER SUPPLY PARTS

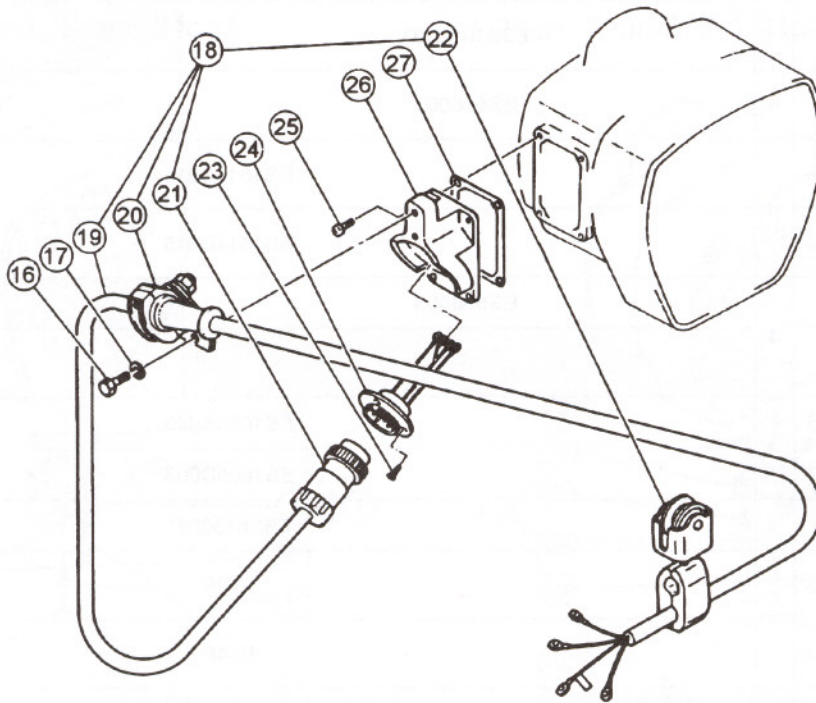


Fig. No.	Part Name	Parts Per Hoist	Capacity										
			¼-S	½-L	½-S	1-L	1-S	2-L	1½-S	3-S	2-S	2½-S	5-S
16	Bolt	2	9093325										
17	Spring Washer	2	9012711										
18	Power Supply Cable Complete Set	1	ES1521003						ES1521015				
	19 Power Supply Cable 4c	1	14/4										
	20 Cable Clamp Arm Assembly	1	ES1822003										
	21 Plug 4P	1	ES522003										
	22 Cable Hanger Assembly	3	ES1527003										
23	Flat Head Machine Screw	4	ES558003										
24	Socket 4P Assembly	1	ES1523003										
25	Machine Screw with Spring Washer	4	ES656003										
26	Socket Holder A	1	ES118003										
27	Socket Holder Packing A	1	ES119003										

HARRINGTON

HOISTS AND CRANES

www.harringtonhoists.com

Harrington Hoists, Inc.
401 West End Avenue
Manheim, PA 17545
Phone: 717-665-2000
Toll Free: 800-233-3010
Fax 717-665-2861

Harrington Hoists - Western Division
2341 Pomona Rincon Rd. #103
Corona, CA 92880
Phone: 909-279-7100
Toll Free: 800-317-7111
Fax: 909-279-7500

ESOM

Free Manuals Download Website

<http://myh66.com>

<http://usermanuals.us>

<http://www.somanuals.com>

<http://www.4manuals.cc>

<http://www.manual-lib.com>

<http://www.404manual.com>

<http://www.luxmanual.com>

<http://aubethermostatmanual.com>

Golf course search by state

<http://golfingnear.com>

Email search by domain

<http://emailbydomain.com>

Auto manuals search

<http://auto.somanuals.com>

TV manuals search

<http://tv.somanuals.com>