



MODEL H3266 ENGINE CLEANING GUN INSTRUCTION SHEET

⚠ WARNING	
	EYE/EAR INJURY HAZARD! Wear safety glasses and hearing protection when using this tool!
	INJURY HAZARD! Always disconnect tool from air to prevent unexpected operation during service!
	DO NOT EXCEED 90 PSI! Personal injury could occur.
	EXPLOSION HAZARD! Do not spray flammable fluids near and open flame or ignition source.
	LUNG HAZARD! Always wear a respirator when using this tool and use in a well ventilated area.

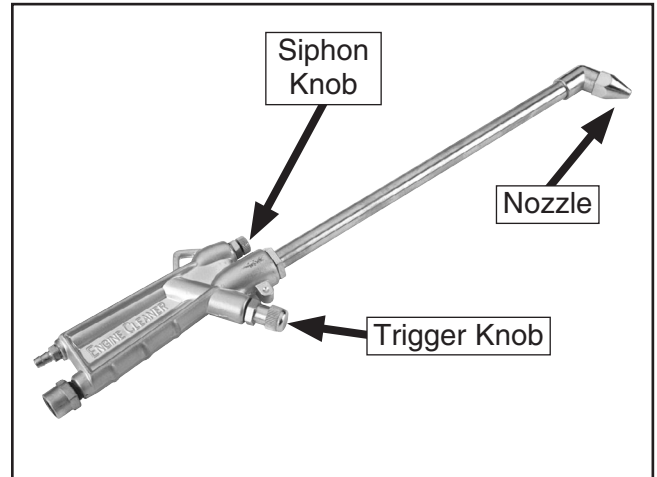


Figure 1. Model H3266 (siphon hose not shown).

- To adjust the amount of solution being used, rotate the siphon knob; to adjust the amount of air flow; rotate the trigger knob.
- Hold the gun so the nozzle is 6–10" from the surface and squeeze the trigger knob.
- When you are done, place the siphon hose into a clean bucket of water and spray until the gun sprays clean water.

Specifications

Air Inlet Size	1/4" NPT
Air Consumption.....	12 CFM
Operating Pressure	90 PSI
Wand Length.....	9"
Weight	11 lbs

Operation

- Make sure the engine is cool to the touch, and disconnect the positive battery cable.
- Connect the engine cleaning gun (**Figure 1**) to an air supply set at 60 PSI. Adjust the trigger knob until there is no air escaping from the cleaning gun.
- Connect the siphon hose to the cleaning gun and place the other end into an approved container of engine cleaning solution.

Air Supply

The engine cleaning gun **MUST** be regularly lubricated with 3-4 drops of air tool oil directly into the air fitting before each use. For best results, we recommend using an in line filter, lubricator, and regulator, as shown in **Figure 2**.

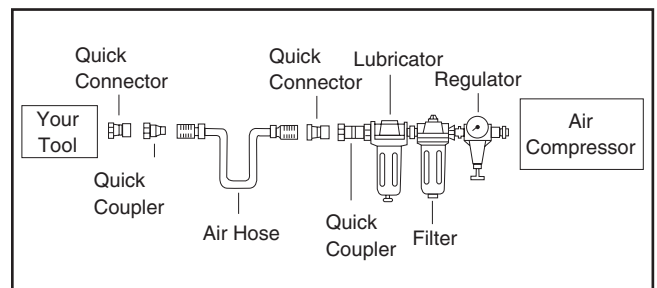
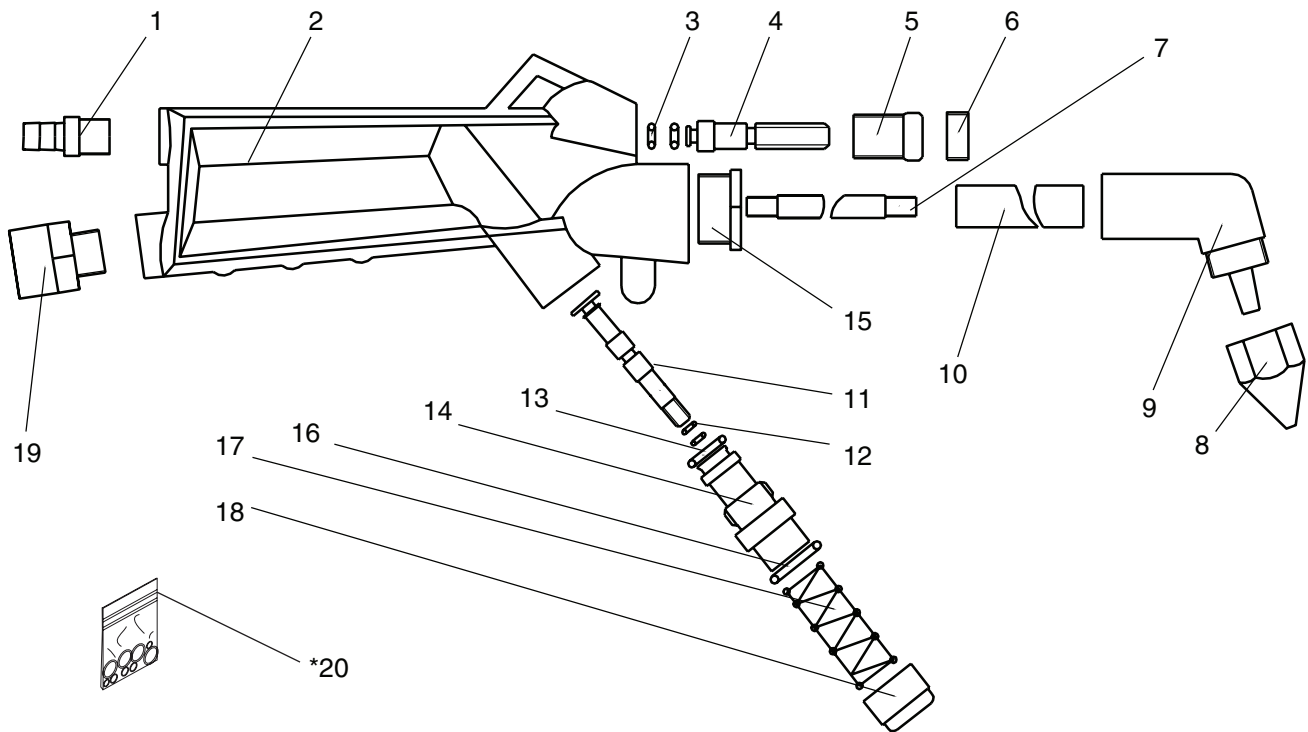


Figure 2. Installing your tool.

H3266 Parts Breakdown and List



REF	PART #	DESCRIPTION
1	PH3266001	1/4" NPT MALE QUICK CONNECT
2	PH3266002	GUN BODY
3	PH3266003	O-RING
4	PH3266004	REGULATOR VALVE ROD
5	PH3266005	SIPHON KNOB
6	PH3266006	SIPHON KNOB COVER
7	PH3266007	SUCTION TUBE
8	PH3266008	NOZZLE CAP
9	PH3266009	NOZZLE HEAD
10	PH3266010	WAND

REF	PART #	DESCRIPTION
11	PH3266011	ROD
12	PH3266012	O-RING
13	PH3266013	O-RING
14	PH3266014	SWITCH BASE
15	PH3266015	SPECIAL NUT
16	PH3266016	O-RING
17	PH3266017	COMPRESSION SPRING
18	PH3266018	SWITCH CAP
19	PH3266019	AIR INLET
*20	PH3266020	O-RING KIT

* Not Included; for aftermarket purchase only

If you need help with your new pneumatic tool, call our Tech Support at: (570) 546-9663.

COPYRIGHT © MAY, 2008 BY GRIZZLY INDUSTRIAL, INC.
WARNING: NO PORTION OF THIS MANUAL MAY BE REPRODUCED IN ANY SHAPE OR FORM WITHOUT THE WRITTEN APPROVAL OF GRIZZLY INDUSTRIAL, INC.
 #JM10774 PRINTED IN CHINA

Free Manuals Download Website

<http://myh66.com>

<http://usermanuals.us>

<http://www.somanuals.com>

<http://www.4manuals.cc>

<http://www.manual-lib.com>

<http://www.404manual.com>

<http://www.luxmanual.com>

<http://aubethermostatmanual.com>

Golf course search by state

<http://golfingnear.com>

Email search by domain

<http://emailbydomain.com>

Auto manuals search

<http://auto.somanuals.com>

TV manuals search

<http://tv.somanuals.com>