



ELECTRIC $\frac{3}{16}$ " CROWN STAPLER

MODEL H3119

INSTRUCTION MANUAL



COPYRIGHT © OCTOBER, 2002 BY GRIZZLY INDUSTRIAL, INC.
1821 VALENCIA ST., BELLINGHAM, WA 98227

**WARNING: NO PORTION OF THIS MANUAL MAY BE REPRODUCED IN ANY SHAPE
OR FORM WITHOUT THE WRITTEN APPROVAL OF GRIZZLY INDUSTRIAL, INC.**

PRINTED IN CHINA

WARNING

Some dust created by power sanding, sawing, grinding, drilling, and other construction activities contains chemicals known to the State of California to cause cancer, birth defects or other reproductive harm. Some examples of these chemicals are:

- Lead from lead-based paints.
- Crystalline silica from bricks, cement, and other masonry products.
- Arsenic and chromium from chemically treated lumber.


Your risk from these exposures varies, depending on how often you do this type of work. To reduce your exposure to these chemicals: work in a well ventilated area, and work with approved safety equipment, such as those dust masks that are specially designed to filter out microscopic particles.


SAFETY


WARNING

For Your Own Safety Read Instruction Manual Before Operating This Equipment

The purpose of safety symbols is to attract your attention to possible hazardous conditions. This manual uses a series of symbols and signal words which are intended to convey the level of importance of the safety messages. The progression of symbols is described below. Remember that safety messages by themselves do not eliminate danger and are not a substitute for proper accident prevention measures.

 **DANGER** Indicates an imminently hazardous situation which, if not avoided, WILL result in death or serious injury.

 **WARNING** Indicates a potentially hazardous situation which, if not avoided, COULD result in death or serious injury.

 **CAUTION** Indicates a potentially hazardous situation which, if not avoided, MAY result in minor or moderate injury. It may also be used to alert against unsafe practices.

NOTICE This symbol is used to alert the user to useful information about proper operation of the equipment.

WARNING **Safety Instructions**

- KEEP ALL SAFETY DEVICES IN PLACE** and in working order.
- REMOVE ADJUSTING KEYS AND WRENCHES.** Form habit of checking to see that keys and adjusting wrenches are removed from winch before operation.
- KEEP CHILDREN AWAY.** All children should be kept at a safe distance from winch.
- DO NOT USE UNDER THE INFLUENCE OF DRUGS OR ALCOHOL.**
- NEVER ALLOW UNTRAINED USERS TO RUN THIS TOOL WHILE UNSUPERVISED.**
- WEAR PROPER APPAREL.** Do not wear loose clothing, gloves, neckties, rings, bracelets, or other jewelry which may get caught in moving parts. Non-slip footwear is recommended. Wear protective hair covering to contain long hair.
- ALWAYS USE SAFETY GLASSES.** Also use face or dust mask if cutting operation is dusty. Everyday eyeglasses only have impact resistant lenses, they are NOT safety glasses.
- IF YOU ARE UNSURE OF THE INTENDED OPERATION, STOP USING THE TOOL.**

WARNING

Safety Instructions For Power Tools

- 9. USE PROPER EXTENSION CORD** for the tool. Make sure your extension cord is in good condition. Conductor size should be in accordance with the chart below. The amperage rating should be listed on the motor or tool nameplate. An undersized cord will cause a drop in line voltage resulting in loss of power and overheating. Your extension cord must also contain a ground wire and plug pin. Always repair or replace extension cords if they become damaged.
- 10. WEAR PROPER APPAREL.** Do not wear loose clothing, gloves, neckties, rings, bracelets, or other jewelry which may get caught in moving parts. Non-slip footwear is recommended. Wear protective hair covering to contain long hair.
- 11. ALWAYS USE SAFETY GLASSES.** Also use face or dust mask if cutting operation is dusty. Everyday eyeglasses only have impact resistant lenses, they are NOT safety glasses.
- 12. SECURE WORK.** Use clamps or a vise to hold work when practical. It's safer than using your hand and frees both hands to operate tool.
- 13. DON'T OVERREACH.** Keep proper footing and balance at all times.
- 14. MAINTAIN TOOLS WITH CARE.** Keep tools sharp and clean for best and safest performance. Follow instructions for lubricating and changing accessories.
- 15. DISCONNECT TOOLS** before servicing and changing accessories, such as blades, bits, cutters, and the like.
- 16. REDUCE THE RISK OF UNINTENTIONAL STARTING.** Make sure switch is in off position before plugging in.
- 17. USE RECOMMENDED ACCESSORIES.** Consult the owner's manual for recommended accessories. The use of improper accessories may cause risk of injury.
- 18. CHECK DAMAGED PARTS.** Before further use of the tool, a guard or other part that is damaged should be carefully checked to determine that it will operate properly and perform its intended function. Check for alignment of moving parts, binding of moving parts, breakage of parts, mounting, and any other conditions that may affect its operation. A guard or other part that is damaged should be properly repaired or replaced.

Minimum Gauge for Extension Cords

AMP RATING	LENGTH		
	25ft	50ft	100ft
0-6	18	16	16
7-10	18	16	14
11-12	16	16	14
13-16	14	12	12
17-20	12	12	10
21-30	10	10	No

WARNING

No list of safety guidelines can be complete. Operating this tool may require additional safety precautions specific to your working environment. Failure to use reasonable caution while operating this tool could result in serious personal injury.

INTRODUCTION

Commentary



Lack of familiarity with this manual could cause serious personal injury. Spend a sufficient amount of time becoming familiar the contents of this manual, including all the safety warnings.

We are proud to offer the Grizzly Model H3119 Electric $\frac{3}{16}$ " Crown Stapler. This model is part of a growing Grizzly family of fine power tools. When used according to the guidelines set forth in this manual, you can expect years of trouble-free, enjoyable operation and proof of Grizzly's commitment to customer satisfaction.

The Model H3119 is a high powered electric stapler capable of firing 20 gauge, $\frac{3}{16}$ " crown staples in lengths ranging from $\frac{1}{4}$ " to $\frac{3}{16}$ ". The quick loading magazine holds 85 staples and the weight is 3.25 lbs.

The Model H3119 is best suited for installation of carpet, insulation, ceiling tiles, cabinets and HVAC systems.

We are pleased to provide this manual with the Model H3119. It was written to encourage safety considerations and guide you through general operating procedures and maintenance. This manual represents our effort to produce the best documentation possible.

The specifications, details, and photographs in this manual represent the Model H3119 as supplied when the manual was prepared. However, owing to Grizzly's policy of continuous improvement, changes may be made at any time with no obligation on the part of Grizzly. If you have any comments regarding this manual, please write to us at the address below:

Grizzly Industrial, Inc.
c/o Technical Documentation
P.O. Box 2069
Bellingham, WA 98227-2069

Most importantly, we stand behind our tools. If you have any service questions or parts requests, please call or write us at the location listed below.

Grizzly Industrial, Inc.
1203 Lycoming Mall Circle
Muncy, PA 17756
Phone: (570) 546-9663
Fax: (800) 438-5901
E-Mail: techsupport@grizzly.com
Web Site: <http://www.grizzly.com>

OPERATION

Getting Started

Please take the time to become familiar with this instruction manual. The information contained will allow you to get the maximum enjoyment and use from your new tool.

Loading The Stapler

The Model H3119 can hold up to 85 staples in the quick loading magazine.

To load the stapler:

1. **Unplug the tool from the power source!**
2. Press the silver lever while sliding back on the staple magazine.
3. Point the tip of the stapler upward to reveal the stapler loading area. *The loading area consists of a groove or channel that runs along the bottom of the stapler.*
4. Load a stick of 20 gauge $\frac{3}{16}$ " crown staples $\frac{1}{4}$ " to $\frac{9}{16}$ " long into the loading area.
5. Slowly slide the staple magazine back into the closed position until the silver lever latches in the closed position.

Using The Stapler

WARNING

DO NOT pull the trigger until the tip of the stapler is against the surface to be stapled. The stapler does NOT have a safety mechanism.

1. Be sure the stapler is loaded and the magazine is closed securely.
2. Wear safety glasses when using the stapler
3. Plug the stapler into a 110V power source.
4. Place the tip of the stapler against the workpiece and pull the trigger.

CAUTION

Avoid repeatedly shooting staples into the exact same location without moving the tip of the stapler. A staple could become jammed in the tip of the stapler.

Clearing Jammed Staples

Staple jams are an inevitable part of operating any stapler.

To clear a jammed stapler:



1. **Unplug the tool from the power source!**
2. Open the staple magazine and remove all un-jammed staples.
3. The jammed staple may be easily removed at this time; otherwise, the stapler tip will need to be disassembled.
4. To disassemble the tip, use an allen wrench to remove the three allen head cap screws from the face of the tip.
5. Once the screws are removed and the staple magazine is open, the tip piece should pull away from the stapler.
6. The jammed staple should now be easy to remove.
7. Once the jammed staple is removed, re-assemble the stapler.

Maintenance

Unplug the stapler from the power source before performing any maintenance!

Cleaning The Stapler

While wearing safety glasses, periodically clean the stapler with compressed air. DO NOT use flammable products to clean the stapler.

 WARNING

Gasoline or petroleum products used to clean the tool could explode causing serious personal injury. DO NOT use gasoline or petroleum products to clean the tool.

WARRANTY AND RETURNS

Grizzly Industrial, Inc. warrants every product it sells for a period of **1 year** to the original purchaser from the date of purchase. This warranty does not apply to defects due directly or indirectly to misuse, abuse, negligence, accidents, repairs or alterations or lack of maintenance. This is Grizzly's sole written warranty and any and all warranties that may be implied by law, including any merchantability or fitness, for any particular purpose, are hereby limited to the duration of this written warranty. We do not warrant or represent that the merchandise complies with the provisions of any law or acts unless the manufacturer so warrants. In no event shall Grizzly's liability under this warranty exceed the purchase price paid for the product and any legal actions brought against Grizzly shall be tried in the State of Washington, County of Whatcom.

We shall in no event be liable for death, injuries to persons or property or for incidental, contingent, special, or consequential damages arising from the use of our products.

To take advantage of this warranty, contact us by mail or phone and give us all the details. We will then issue you a "Return Authorization Number," which must be clearly posted on the outside as well as the inside of the carton. We will not accept any item back without this number. Proof of purchase must accompany the merchandise.

The manufacturers reserve the right to change specifications at any time because they constantly strive to achieve better quality equipment. We make every effort to ensure that our products meet high quality and durability standards and we hope you never need to use this warranty.

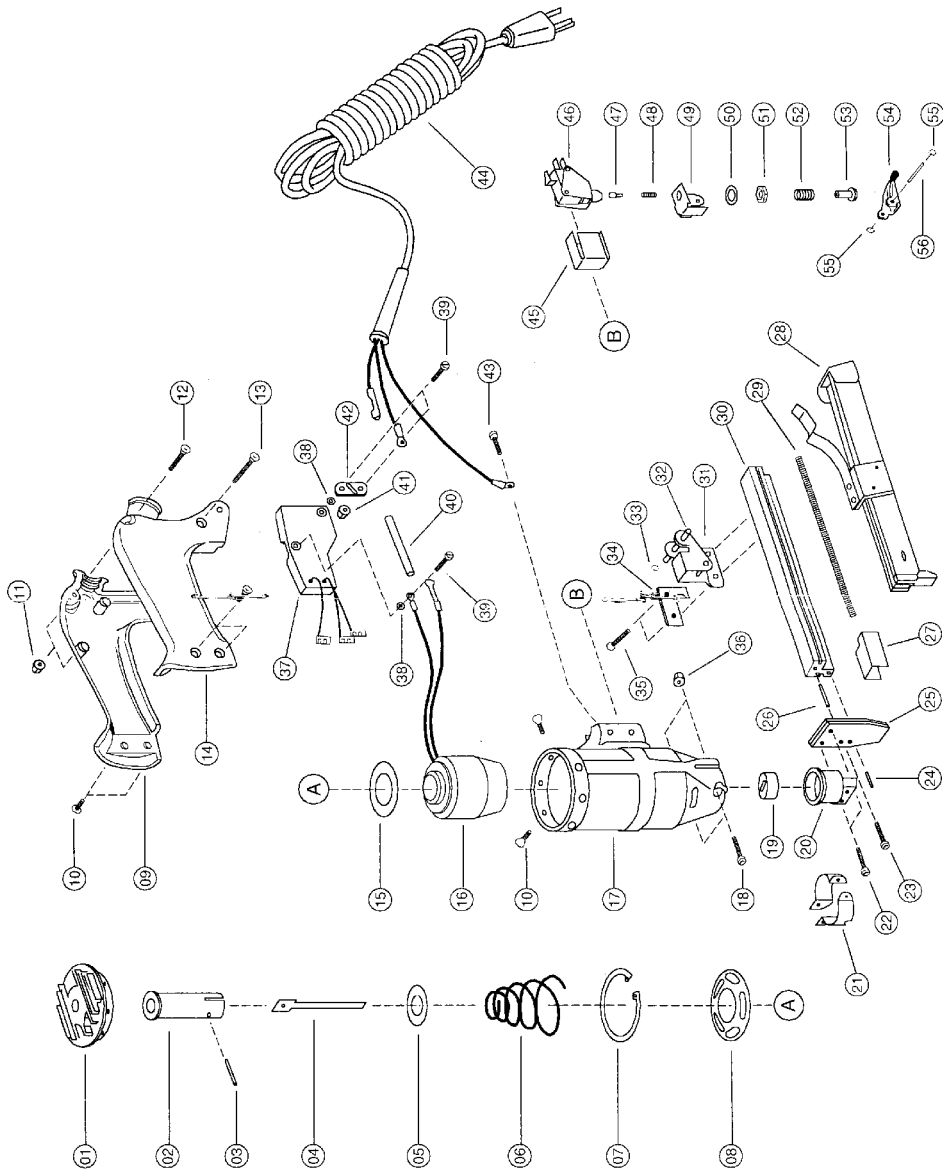
Please feel free to write or call us if you have any questions about the machine or the manual.

Grizzly Industrial, Inc.
1203 Lycoming Mall Circle
Muncy, PA 17756
Phone: (570) 546-9663
Fax: (800) 438-5901

E-Mail:
techsupport@grizzly.com

Web Site: <http://www.grizzly.com>

Thank you again for your business and continued support. We hope to serve you again soon!



REF	PART #	DESCRIPTION
01	PH3119001	CYLINDER CAP ASSEMBLY
02	PH3119002	PLUNGER
03	PH3119003	PIN
04	PH3119004	PLUNGER BLADE
05	PH3119005	PLUNGER RET. WASHER
06	PH3119006	RETURN SPRING
07	PH3119007	CLIP
08	PH3119008	LOCATOR RING
09	PH3119009	HANDLE (RIGHT)
10	PFH27	FLAT HD ALLEN SCR 8-32 X 3/4"
11	PLN09	LOCK NUT 8-32
12	PSB67	CAP SCREW 8-32 X 7/8"
13	PFH28	FLAT HD ALLEN SCR 8-32 X 1-5/16"
14	PH3119014	HANDLE (LEFT)
15	PH3119015	RING
16	PH3119016	COIL/WASHER ASSEMBLY
17	PH3119017	STAPLER BODY
18	PSB38	SCREW 10-32 X 3/8"
19	PH3119019	BUMPER
20	PH3119020	NOSE RETAINER
21	PH3119021	CLAMP
22	PSB68	CAP SCREW 10-32 X 1/2"
23	PSB33	SCREW 10-24 X 3/4"
24	PH3119024	PIN
25	PH3119025	NOSE
26	PH3119026	PIN
27	PH3119027	PUSHER
28	PH3119028	MAGAZINE BASE

REF	PART #	DESCRIPTION
29	PH3119029	SPRING
30	PH3119030	BASE
31	PH3119031	MAGAZINE SUPPORT
32	PH3119032	PIN
33	PH3119033	E-CLIP
34	PH3119034	SUPPORT SPACER
35	PSB41	SCREW 10-24 X 1/2"
36	PLN10	LOCK NUT 10-32
37	PH3119037	POWER SUPPLY
38	PLW08	LOCK WASHER #6
39	PS36	PHLP HD SCR 6-32 X 3/8"
40	PH3119040	INSULATION SLEEVING
41	PLN11	LOCK NUT 6-32
42	PH3119042	FUSE HOLDER
43	PSB69	CAP SCREW 6-32 X 3/8"
44	PH3119044	CORD ASSEMBLY
45	PH3119045	SWITCH PROTECTOR
46	PH3119046	SWITCH ASSEMBLY
47	PH3119047	CONTACT PIN
48	PH3119048	SPRING
49	PH3119049	TRIGGER BRACKET
50	PLW01	LOCK WASHER 5/16"
51	PN20	HEX NUT 5/16"-24
52	PH3119052	SPRING
53	PH3119053	CONTACT BUTTON
54	PH3119054	TRIGGER
55	PH3119055	RETAINING RING
56	PH3119056	TRIGGER PIN
57	PH3119057	CARRYING CASE (NOT SHOWN)

NOTES

NOTES

WARRANTY CARD

Name _____

Street _____

City _____ State _____ Zip _____

Phone Number _____ E-Mail _____ FAX _____

Model # _____ Serial # _____

The following information is given on a voluntary basis. It will be used for marketing purposes to help us develop better products and services. Of course, all information is strictly confidential.

1. How did you learn about us?
 Advertisement Friend
 Catalog Card Deck
 World Wide Web
 Other _____
2. What is your annual household income?
 \$20,000-\$29,999 \$60,000-\$69,999
 \$30,000-\$39,999 \$70,000-\$79,999
 \$40,000-\$49,999 \$80,000-\$89,999
 \$50,000-\$59,999 \$90,000 +
3. What is your age group?
 20-29 50-59
 30-39 60-69
 40-49 70 +
4. How long have you been a woodworker?
 0 - 2 Years 8 - 20 Years
 2 - 8 Years 20+ Years
5. How would you rank your woodworking skills?
 Simple Advanced
 Intermediate Master Craftsman
6. What stationary woodworking tools do you own?
Check all that apply.
 Air Compressor Panel Saw
 Band Saw Planer
 Drill Press Power Feeder
 Drum Sander Radial Arm Saw
 Dust Collector Shaper
 Spindle Sander Jointer
 Table Saw Lathe
 Mortiser Wide Belt Sander
 Horiz.Boring Machine
 Vacuum Veneer Press
 Other _____
7. How many of your woodworking machines are Grizzly? _____
8. Which benchtop tools do you own? Check all that apply.
 1"x42" Belt Sander 6" - 8" Grinder
 5" - 8" Drill Press Mini Lathe
 8" Table Saw 8" - 10" Bandsaw
 Scroll Saw Disc/Belt Sander
 Spindle/Belt Sander Mini Jointer
 10"-12"Thickness Planer
 Other _____
9. How many of the machines checked above are Grizzly? _____
10. Which portable/hand held power tools do you own?
Check all that apply.
 Belt Sander Orbital Sander
 Biscuit Joiner Palm Sander
 Circular Saw Portable Planer
 Detail Sander Saber Saw
 Drill/Driver Reciprocating Saw
 Miter Saw Router
 Other _____
11. What machines/supplies would you like Grizzly Industrial to carry?

12. What new accessories would you like Grizzly Industrial to carry?

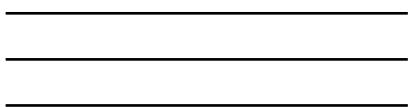
13. What other companies do you purchase your tools and supplies from?

14. Do you think your purchase represents good value?
 Yes No
15. Would you recommend Grizzly to a friend?
 Yes No
16. Would you allow us to use your name as a reference for Grizzly customers in your area? **Note: We never use names more than three times.**
 Yes No
17. Comments: _____

Send a Grizzly Catalog to a friend:

Name_____
Street_____
City_____State_____Zip_____

FOLD ALONG DOTTED LINE



Place
Stamp
Here



GRIZZLY INDUSTRIAL, INC.
P.O. BOX 2069
BELLINGHAM, WA 98227-2069



TAPE ALONG EDGES--PLEASE DO NOT NAIL

Free Manuals Download Website

<http://myh66.com>

<http://usermanuals.us>

<http://www.somanuals.com>

<http://www.4manuals.cc>

<http://www.manual-lib.com>

<http://www.404manual.com>

<http://www.luxmanual.com>

<http://aubethermostatmanual.com>

Golf course search by state

<http://golfingnear.com>

Email search by domain

<http://emailbydomain.com>

Auto manuals search

<http://auto.somanuals.com>

TV manuals search

<http://tv.somanuals.com>