



MODEL G0636XB ULTIMATE 17" BANDSAW w/MOTOR BRAKE MANUAL INSERT

The Model G0636XB is the same as the Model G0636X, except it has a magnetic brake motor and a square fence rail. Besides the instructions, data sheet, circuit requirements, parts, and wiring diagram in this insert, the content in the Model G0636X owner's manual is the same for both machines. Before operating your new machine, you **MUST** read and understand this insert and the entire Model G0636X manual to reduce the risk of injury from improper use or setup.

If you have any further questions about this manual insert or the differences between the Model G0636XB and the Model G0636X, contact our Technical Support at (570) 546-9663 or email techsupport@grizzly.com.

Machine Inventory

After all the parts have been removed from the crate, you should have the following items:

Crate Contents (Figure 1):	Qty
A. Bandsaw (not shown)	1
B. Miter Gauge.....	1
C. Fence.....	1
D. Resaw Fence	1
E. Guide Post Handwheel.....	1

Hardware and Tools (not shown)	Qty
Hex Wrench 5mm.....	1
Hex Wrench 6mm.....	1
Open End Wrench 10 x 13.....	1
Open End Wrench 17 x 19.....	1
Lifting Rings.....	2
Resaw Fence Lock Handle M8-1.25 x 44 (Resaw Fence)	1
Moving Plate (Resaw Fence)	1
Flat Washer 8mm (Resaw Fence)	1

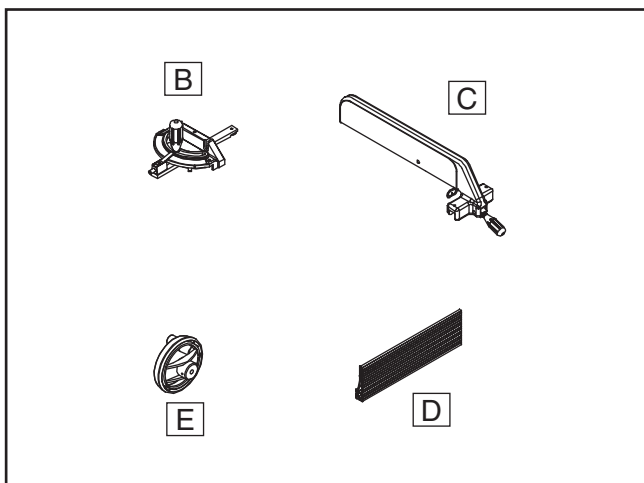


Figure 1. G0636XB inventory.

Installing Fence

Components and Hardware Needed:	Qty
Fence Assembly	1
Resaw Fence Assembly	1
Resaw Fence Lock Handle M8-1.25 x 44	1
Moving Plate.....	1
Flat Washer 8mm	1

To install the fence:

1. Remove the cap screw, knobs, and washers that hold the rail onto the table, then remove the rail.
2. Flip the rail over and reinstall with the fasteners removed in **Step 1**.
3. Install the fence handle on the fence, if it is not already installed.

COPYRIGHT © JUNE, 2008 BY GRIZZLY INDUSTRIAL, INC.
WARNING: NO PORTION OF THIS MANUAL MAY BE REPRODUCED IN ANY SHAPE OR FORM WITHOUT THE WRITTEN APPROVAL OF GRIZZLY INDUSTRIAL, INC.
 #BL10818 PRINTED IN TAIWAN

4. Tighten the hex nut on the fence handle against the fence pivot block (**Figure 2**).

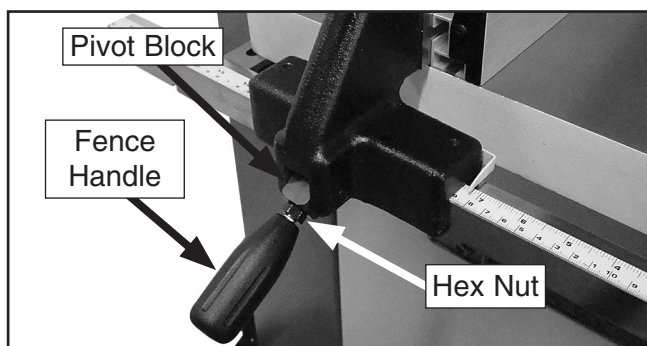


Figure 2. Fence handle components.

5. Install the resaw fence lock handle (with the 8mm washer and moving plate) onto the fence, then slide the resaw fence over the moving plate as shown in **Figure 3**.

Note: Leave the moving plate and lock handle loose enough to slide on the resaw fence.

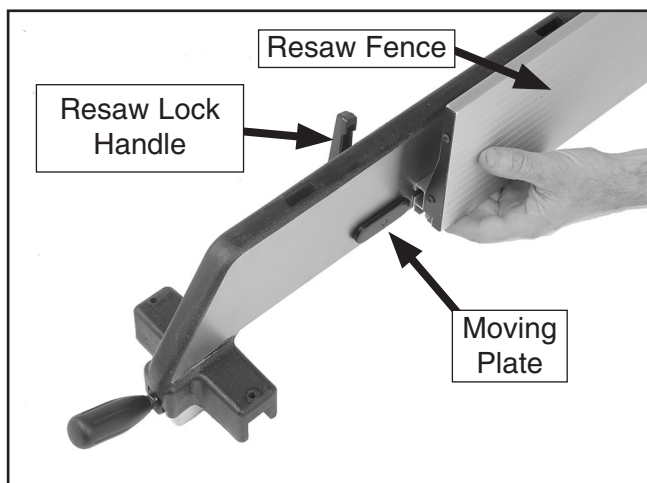


Figure 3. Example of attaching resaw fence to standard fence.

6. Tighten the resaw lock handle.
7. Pull the fence handle up and place the fence assembly on the rail.
8. Push the fence handle down to lock the fence assembly in place.

Test Run

1. Follow **Steps 1-3** in the G0636X Manual on **Page 20**.

2. Verify that the machine is operating correctly by turning the switch disabling key (**Figure 4**) to "1" and turning the machine **ON**.

—When operating correctly, the machine runs smoothly with little or no vibration or rubbing noises.

—Investigate and correct strange or unusual noises or vibrations before operating the machine further. Always disconnect the machine from power when investigating or correcting potential problems.



Figure 4. G0636XB switch disabling key and ON/OFF switch.

3. Press the OFF button to stop the machine.
4. **WITHOUT** resetting the OFF button, press the ON button. The machine should not start.

—If the machine does not start, the OFF button safety feature is working correctly.

—If the machine does start (with the OFF button pushed in), immediately disconnect power to the machine. The OFF button safety feature is not working correctly. This safety feature must work properly before proceeding with regular operations. Call Tech Support for help.

5. Twist the OFF button clockwise so it pops out. When the OFF button pops out, the switch is reset and ready for operation (see **Figure 5**).



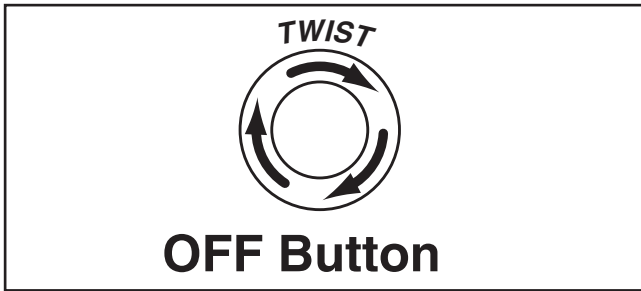


Figure 5. Resetting the switch.

6. Turn the switch disabling key to "0", as shown in **Figure 4**.

7. Try to turn the machine **ON**.

—If the bandsaw does not start, the switch disabling feature is working as designed. The Test Run is complete.

—If the bandsaw starts, immediately disconnect power. The switch disabling feature is not working correctly. This safety feature must work properly before proceeding with regular operations. Call Tech Support for help.

Motor Brake

The motor brake is activated automatically when the OFF button is pushed, quickly bringing the blade to a stop.

Accessories

T10131—Extension Table for G0636XB

Easily attaches to the main table of your bandsaw and provides additional support for large workpieces.



Figure 6. Model T10131 Extension Table attached to G0636XB bandsaw.

Aligning Fence

To ensure cutting accuracy when the fence is first installed, the fence should be aligned with the miter slot.

To align the fence parallel with the miter slot:

1. DISCONNECT BANDSAW FROM POWER!
2. Make sure the miter slot is aligned with the bandsaw blade (see G0636X Manual **Page 25, Aligning Table**).
3. Mount the fence next to the miter slot, then loosen the knobs and cap screw that secure the fence rail to the table.
4. Adjust the fence face parallel with the edge of the miter slot, as shown in **Figure 7**.



Figure 7. Example of fence square with miter slot.

5. Tighten the knobs and cap screw that secure the rail to the table, being careful not to move the fence.

NOTICE

Adjusting the fence parallel to the miter slot does not guarantee straight cuts. The miter slot may need to be adjusted parallel to the side of the blade. Refer to the "Aligning Table" instructions in the G0636X Manual on Page 25.

Pointer Calibration

Your new bandsaw is equipped with a fence measurement system that includes a fence pointer, which must be calibrated when the bandsaw is first set up.

To calibrate the pointer:

1. If the fence is mounted on the right-hand side of the blade, remove it and re-install it on the left-hand side of the blade.
2. Place the fence flush against the bandsaw blade (**Figure 8**).

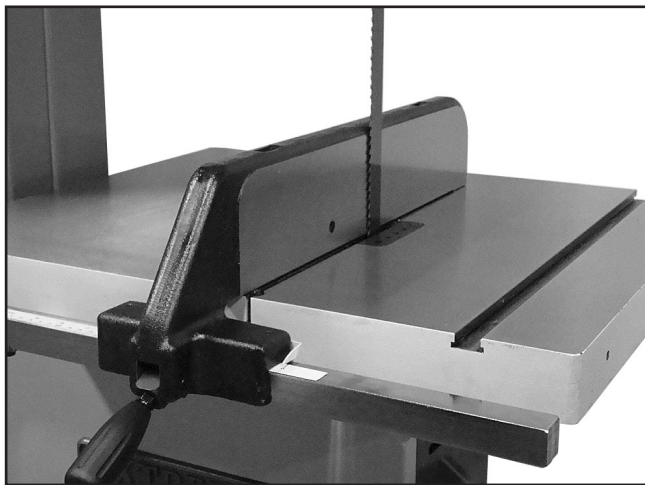


Figure 8. Fence flush with blade.

3. Loosen the pointer adjustment screw (**Figure 9**) and set the pointer in line with "0" and the measurement scale on the table.

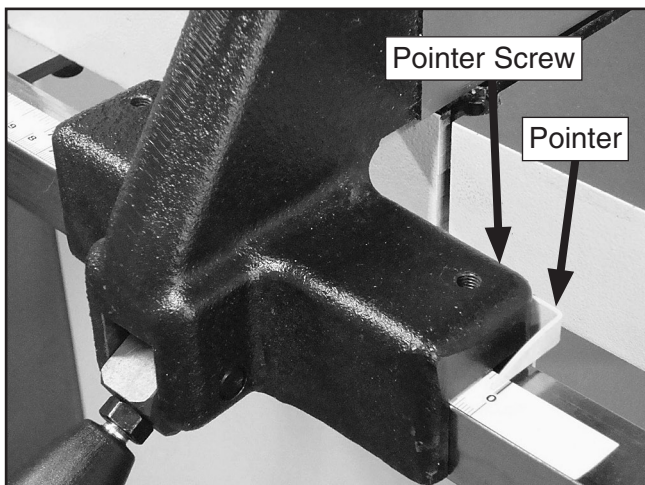


Figure 9. Calibrating fence pointer (screw out of view).

4. Tighten the pointer adjustment nut.

Magnetic Brake Adjustment

The space between the magnetic brake and brake shoe is preset by the factory at 0.2mm (0.008"). However, you should adjust this space every two to three years, or when it takes over five seconds for the brake to stop the motor.

Tools Needed

Phillips Head Screwdriver	1
US Dollar Bills or 0.008" Feeler Gauges.....	2
Hex Wrench 3mm.....	1
Hex Wrench 4mm.....	1

To adjust the space between the magnetic brake and brake shoe:

1. DISCONNECT BANDSAW FROM POWER!
2. Remove the motor fan cover, then loosen the cap screws securing the motor fan and brake shoe (see **Figure 10**).
3. Fold two dollar bills in half and slide them (or feeler gauges) between the brake shoe and magnetic brake on both sides (see **Figure 10**).
4. Slide the fan toward the brake until you feel a slight resistance when moving the bill, then tighten the cap screws on the brake shoe and motor fan, then reinstall the motor fan cover.

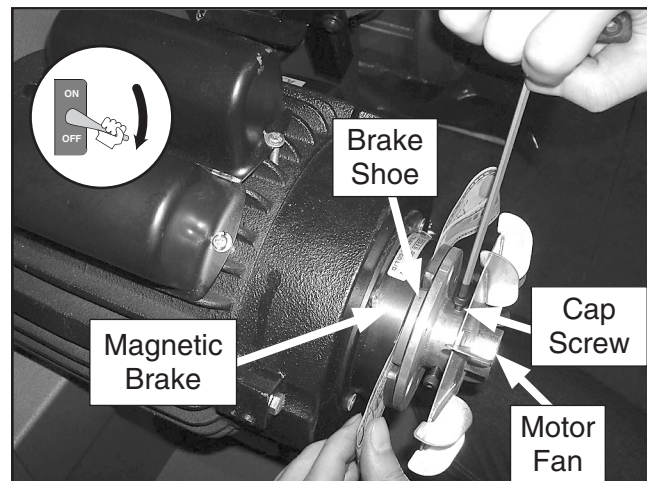


Figure 10. Adjusting distance between magnetic brake and brake shoe.





MACHINE DATA SHEET

Customer Service #: (570) 546-9663 • To Order Call: (800) 523-4777 • Fax #: (800) 438-5901

MODEL G0636XB 17" ULTIMATE BANDSAW w/MOTOR BRAKE

Product Dimensions:

Weight 620 lbs.
 Length/Width/Height 35¼" x 33¾" x 78½"
 Foot Print (Length/Width)..... 29½" x 23½"

Shipping Dimensions:

Type Wood Slat Crate
 Content..... Machine
 Weight..... 675 lbs.
 Length/Width/Height..... 36½" x 27½" x 88"

Electrical:

Switch..... Magnetic w/Thermal Overload Protection
 Switch Voltage 220V
 Recommended Circuit Size 30 amp
 Recommended Plug Type L6-30
 Plug Included No

Motor:

Type TEFC Capacitor Start Induction
 Horsepower..... 5 HP
 Voltage 220V
 Phase Single
 Amps 22A
 Speed 1725 RPM
 Cycle 60 Hz
 Number Of Speeds 1
 Power Transfer Belt Drive
 Bearings..... Shielded and Permanently Lubricated
 Brake..... Built-In Magnetic Type 90VDC

Main Specifications:

Operation Information

Blade Speed..... 4500 FPM
 Table Tilt..... Left 5°, Right 45°

Cutting Capacities

Maximum Cutting Height..... 16"
 Throat Capacity Left of Blade..... 16½"

Blade Information

Standard Blade Length..... 160"-162"
 Blade Width Range ⅛"-1⅜"
 Blade Guides..... Ball Bearing



Table Information

Table Length	21"
Table Width	25½"
Table Thickness	2"
Floor to Table Height.....	35½"

Fence Information

Locks in Front.....	Yes
Locks in Rear	No
Adjustable for Blade Lead.....	Yes
Resaw Fence Plate Height.....	6"

Dust Collection

Number of Dust Ports.....	2
Size of Dust Ports	4"
Required CFM at Each Dust Port	400 CFM

Construction Materials

Table.....	Precision Ground Cast Iron
Table Trunnion	Cast Iron
Rip Fence	Cast Iron
Resaw Fence	Deluxe Extruded Aluminum
Wheels.....	Computer Balanced Cast Iron
Tire Material	Rubber
Wheel Cover.....	Pre-Formed Steel
Body	One Piece Reinforced Steel
Paint	Powder Coated

Other Specifications:

Country Of Origin	Taiwan
Warranty.....	1 Year
Serial Number Location	ID Label on Upper Wheel Cover
Assembly & Setup Time	1 Hour

Features:

- Cast Iron Table Trunnion
- Ball Bearing Blade Guides
- Quick Change Blade Release/Tensioner
- Micro-Adjusting Rack & Pinion Table Tilt
- Rack & Pinion Upper Blade Guide Height Adjustment
- Computer Balanced Cast Iron Wheels with Grizzly Bear Head Cut-Outs
- Blade Tension Indicator
- Height Scale for Upper Blade Guides
- Blade Tracking Window
- Hinged Wheel Covers with Safety Lock
- Deluxe Cast Iron Fence with Extruded Aluminum Resaw Fence Attachment
- Included Miter Gauge
- Included 1" Blade
- Two 4" Dust Ports
- Motor Stops in Under 3 Seconds After Switch Turned Off
- Optional Extension Table with Support

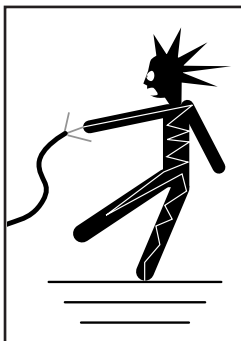


SECTION 2: CIRCUIT REQUIREMENTS

220V Single-Phase

! WARNING

Serious personal injury could occur if you connect the machine to power before completing the setup process. **DO NOT** connect the machine to the power until instructed later in this manual.



! WARNING

Electrocution or fire could result if machine is not grounded and installed in compliance with electrical codes. Compliance **MUST** be verified by a qualified electrician!

Full Load Amperage Draw

This machine draws the following amps under maximum load:

Amp Draw.....22 Amps

Power Supply Circuit Requirements

You **MUST** connect your machine to a grounded circuit that is rated for the amperage given below. Never replace a circuit breaker on an existing circuit with one of higher amperage without consulting a qualified electrician to ensure compliance with wiring codes. **If you are unsure about the wiring codes in your area or you plan to connect your machine to a shared circuit, consult a qualified electrician.**

Minimum Circuit Size.....30 Amps

Power Connection Device

The type of plug required to connect your machine to power depends on the type of service you currently have or plan to install. We recommend using the plug shown in **Figure 11**.

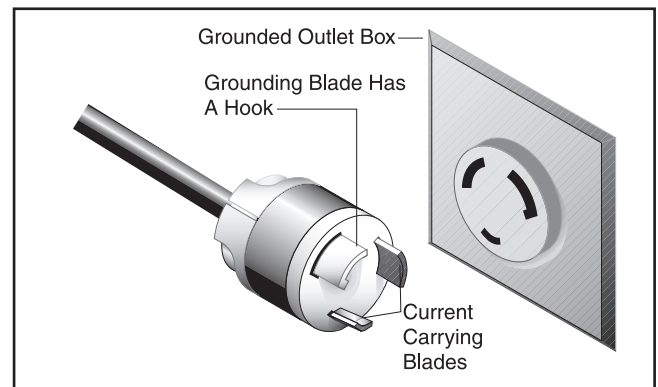


Figure 11. NEMA L6-30 plug and receptacle.

Extension Cords

Using extension cords may reduce the life of the motor. Instead, place the machine near a power source. If you must use an extension cord:

- Use at least a 10 gauge cord that does not exceed 50 feet in length!
- The extension cord must also have a ground wire and plug pin.
- A qualified electrician **MUST** size cords over 50 feet long to prevent motor damage.



G0636XB Electrical Components

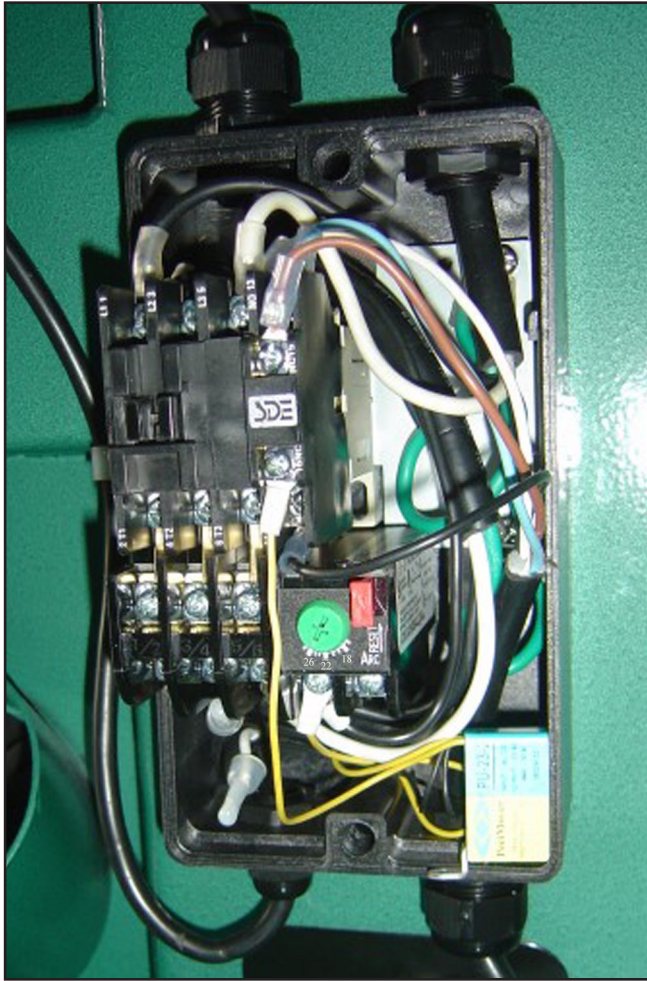


Figure 12. Magnetic switch.

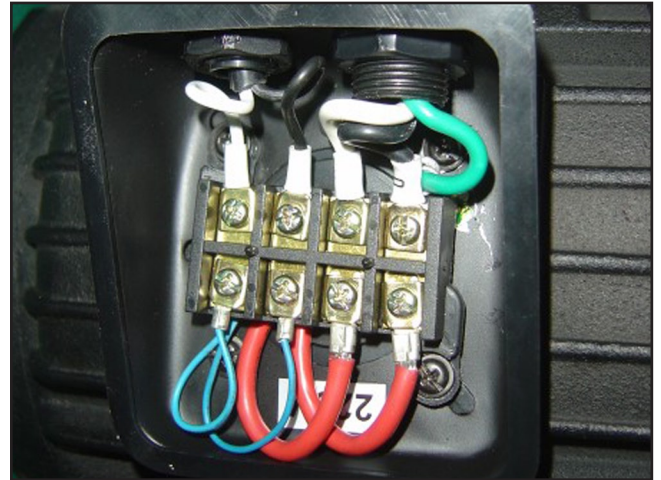


Figure 13. Junction box wiring.

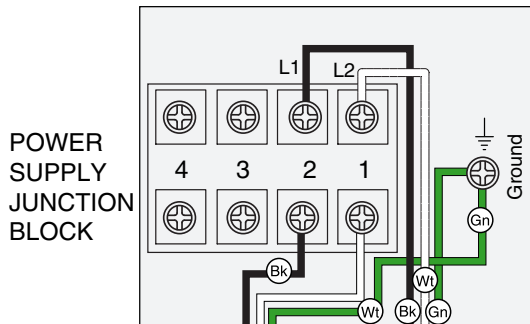
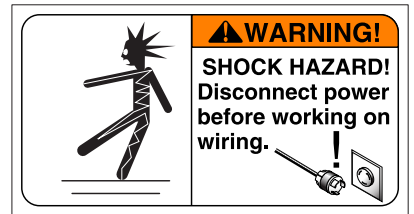


Figure 14. Capacitors.

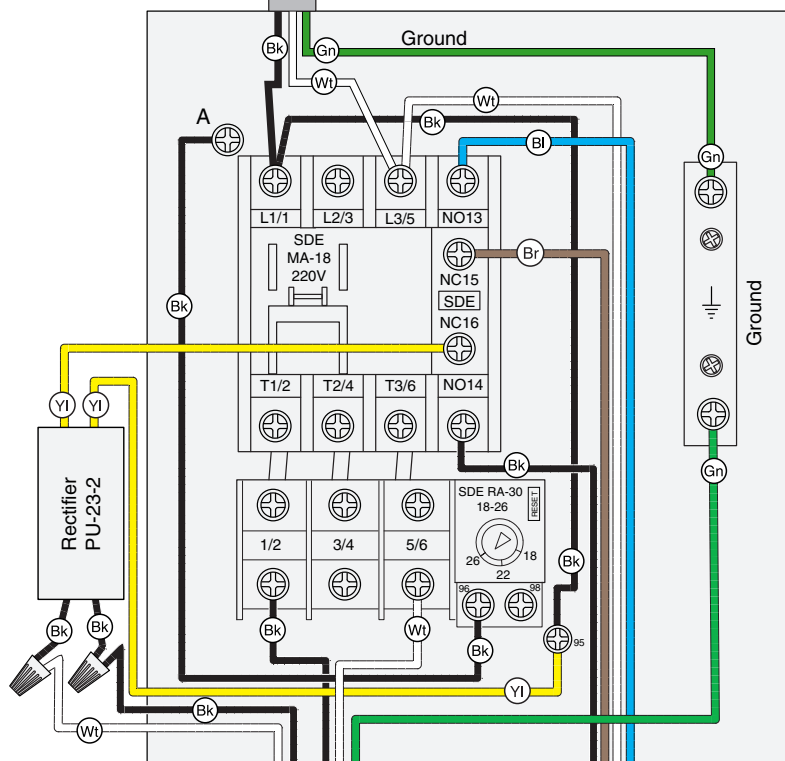
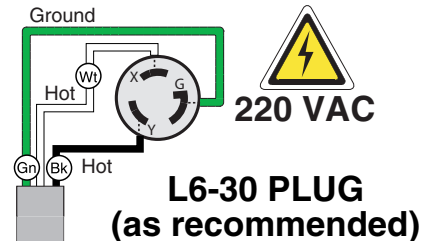
G0636XB Wiring Diagram 5HP 220V, 1-Ph



View this page in color at www.grizzly.com.



COLOR KEY	
BLACK	Bk
WHITE	Wt
GREEN	Gn
RED	Rd
BLUE	Bl
YELLOW	Yl
BROWN	Br

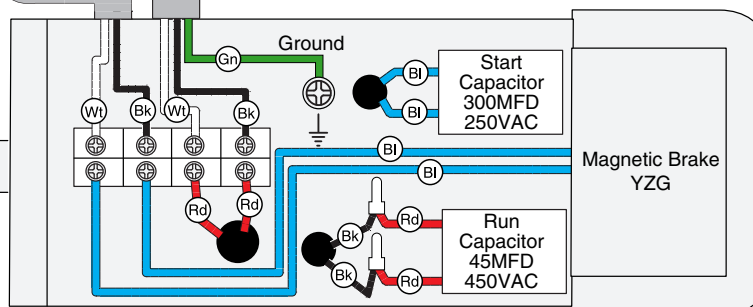
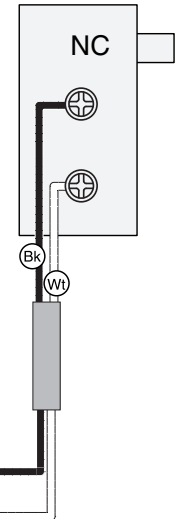
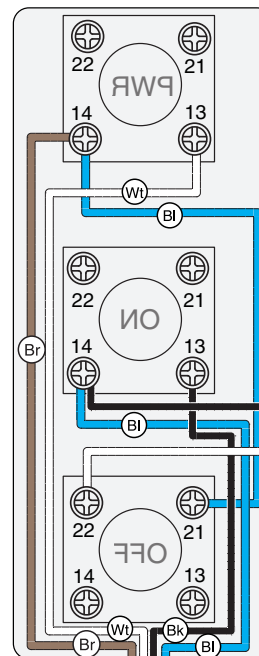


MAGNETIC SWITCH
See Figure 12

220V MOTOR
See Figures 13 & 14

CONTROL PANEL
(viewed from behind)

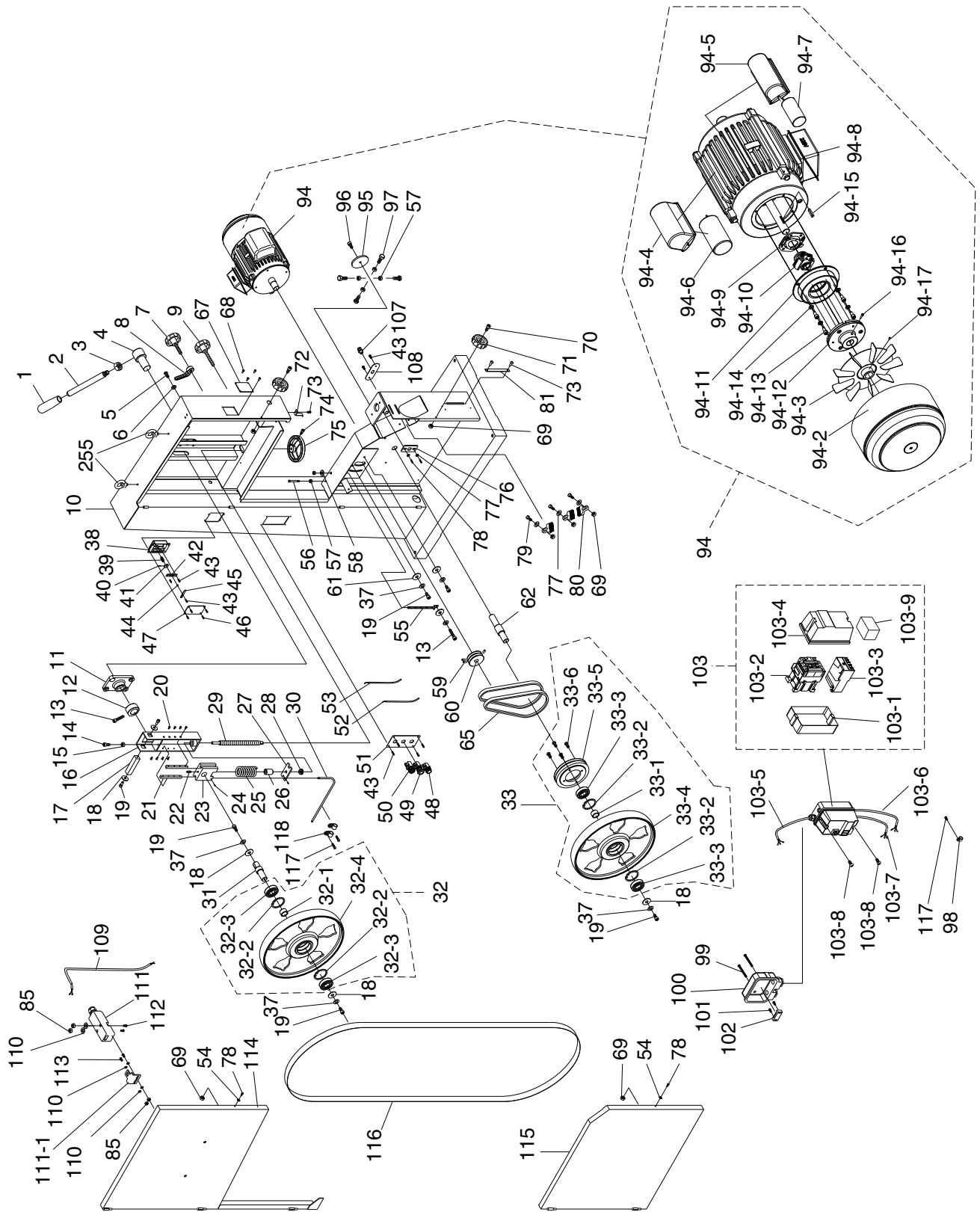
LIMIT SWITCH



NOTICE
The motor wiring shown here is current at the time of printing, but it may not match your machine. Always use the wiring diagram inside the motor junction box.



Main Breakdown



Main Parts List

REF	PART #	DESCRIPTION
1	P0636X001	HANDLE
2	P0636X002	LEVER ROD M16-2
3	PN13M	HEX NUT M16-2
4	P0636X004	ROTATE SHAFT
5	PSBS25M	BUTTON HD CAP SCR M10-1.5 X 20
6	PLW06M	LOCK WASHER 10MM
7	P0636X007	BLD TRACKING KNOB M10-1.5 x 25
8	P0636X008	BLD TRACKING LOCK LEVER 10MM
9	P0636X009	GD POST LOCK KNOB M10-1.5 X 25
10	P0636X010	MACHINE BODY
11	P0636X011	PILLOW BLOCK
12	P0636X012	CAM
13	PSB31M	CAP SCREW M8-1.25 X 25
14	PB28M	HEX BOLT M8-1.25 X 60
15	PN03M	HEX NUT M8-1.25
16	P0636X016	UPPER WHEEL HINGE
17	P0636X017	SQUARE SHAFT
18	P0636X018	SPECIAL WASHER 8MM
19	PSB31M	CAP SCREW M8-1.25 X 25
20	PFH39M	FLAT HD SCR M5-.8 X 16
21	P0636X021	LOCATE PLATE
22	PSS75M	SET SCREW M10-1.5 X 16
23	P0636X023	GUIDE BLOCK
24	PSS07M	SET SCREW M5-.8 X 5
25	P0636X025	COMPRESSION SPRING
26	P0636X026	BUSHING
27	P0636X027	PRESS BLOCK
28	P51201	THRUST BEARING 51201
29	P0636X029	BLADE TENSION SHAFT
30	P0636X030	TENSION LINE
31	P0636X031	UPPER WHEEL SHAFT
32	P0636XB032	UPPER WHEEL ASSEMBLY
32-1	P0636X034	BUSHING
32-2	PR64M	INT RETAINING RING 72MM
32-3	P6306	BALL BEARING 6306ZZ
32-4	P0636X066	LOWER WHEEL
33	P0636XB033	LOWER WHEEL ASSEMBLY
33-1	P0636X034	BUSHING
33-2	PR64M	INT RETAINING RING 72MM
33-3	P6306	BALL BEARING 6306ZZ
33-4	P0636X066	LOWER WHEEL
33-5	P0636XB033-5	PULLEY
33-6	PSBS22M	BUTTON HD CAP SCR M8-1.25 X 20
37	PLW04M	LOCK WASHER 8MM
38	P0636X038	UPPER WHEEL SLIDING BRACKET
39	P0636X039	COMPRESSION SPRING
40	P0636X040	GUIDE PIN 3 X 12
41	P0636X041	MOVING PLATE
42	P0636X042	FIX PLATE
43	PHTEK15M	TAP SCREW M4 X 10
44	PW05M	FLAT WASHER 4MM
45	P0636X045	TENSION POINTER
46	PHTEK6M	TAP SCREW M4 X 16
47	P0636X047	TENSION SCALE
48	P0636X048	START SWITCH

REF	PART #	DESCRIPTION
49	P0636X049	STOP SWITCH
50	P0636X050	KEY SWITCH
51	P0636X051	SWITCH PLATE
52	P0636X052	CONNECTING CORD
53	P0636X053	CONNECTING CORD
54	PLW03M	LOCK WASHER 6MM
55	P0636X055	ADJUST BOLT
56	PB160M	HEX BOLT M10-1.5 X 70
57	PN02M	HEX NUT M10-1.5
58	PW04M	FLAT WASHER 10MM
59	PSS04M	SET SCREW M6-1 X 12
60	P0636X060	PULLEY
61	PW01M	FLAT WASHER 8MM
62	P0636X062	LOWER SHAFT
65	PVA33	V-BELT A-33 4L330
67	P0636X067	TRACKING WINDOW
68	P0636X068	RIVET 3.2 X 10
69	PLN03M	LOCK NUT M6-1
70	PSB02M	CAP SCREW M6-1 X 20
71	P0636X071	KNOB
72	P0636X072	HEIGHT POINTER
73	PFS07M	FLANGE SCREW M5-.8 X 10
74	PSB06M	CAP SCREW M6-1 X 25
75	P0636X075	BLADE TENSION HANDLEWHEEL
76	P0636X076	LOWER WHEEL SUPPORT
77	PW03M	FLAT WASHER 6MM
78	PFS11M	FLANGE SCREW M6-1 X 10
79	PB10M	HEX BOLT M6-1 X 25
80	P0636X080B	BRUSH
81	P0636XB081	STEP COVER
85	PN04M	HEX NUT M4-.7
94	P0531B023	MAG BRAKE MOTOR 5HP 220V 1PH
94-2	P0531B023-2	MOTOR FAN COVER
94-3	P0531B023-3	MOTOR FAN
94-4	P0531B023-4	R. CAPACITOR COVER
94-5	P0531B023-5	S. CAPACITOR COVER
94-6	P0531B023-6	R. CAPACITOR 45M 450VAC
94-7	P0531B023-7	S. CAPACITOR 300MFD 250V
94-8	P0531B023-8	JUNCTION BOX
94-9	P0531B023-9	CENTRIFUGAL SWITCH PLATE
94-10	P0531B023-10	CENTRIFUGAL SWITCH
94-11	P0531B023-11	MAGNETIC BRAKE
94-12	P0531B023-12	BRAKE SHOE
94-13	PSB26M	CAP SCREW M6-1 X 12
94-14	PLW03M	LOCK WASHER 6MM
94-15	PK23M	KEY 5 X 5 X 25
94-16	PSB24M	CAP SCREW M5-.8 X 16
94-17	PSS02M	SET SCREW M6-1 X 6
95	P0636X095	ADJUSTMENT HUB COVER
96	PSBS22M	BUTTON HD CAP SCR M8-1.25 X 20
97	PB14M	HEX BOLT M10-1.5 X 35
98	P0636X098	CORD CLAMP 1/2"
99	PFS09M	FLANGE SCREW M5-.8 X 50
100	P0636X100	TERMINAL BOX



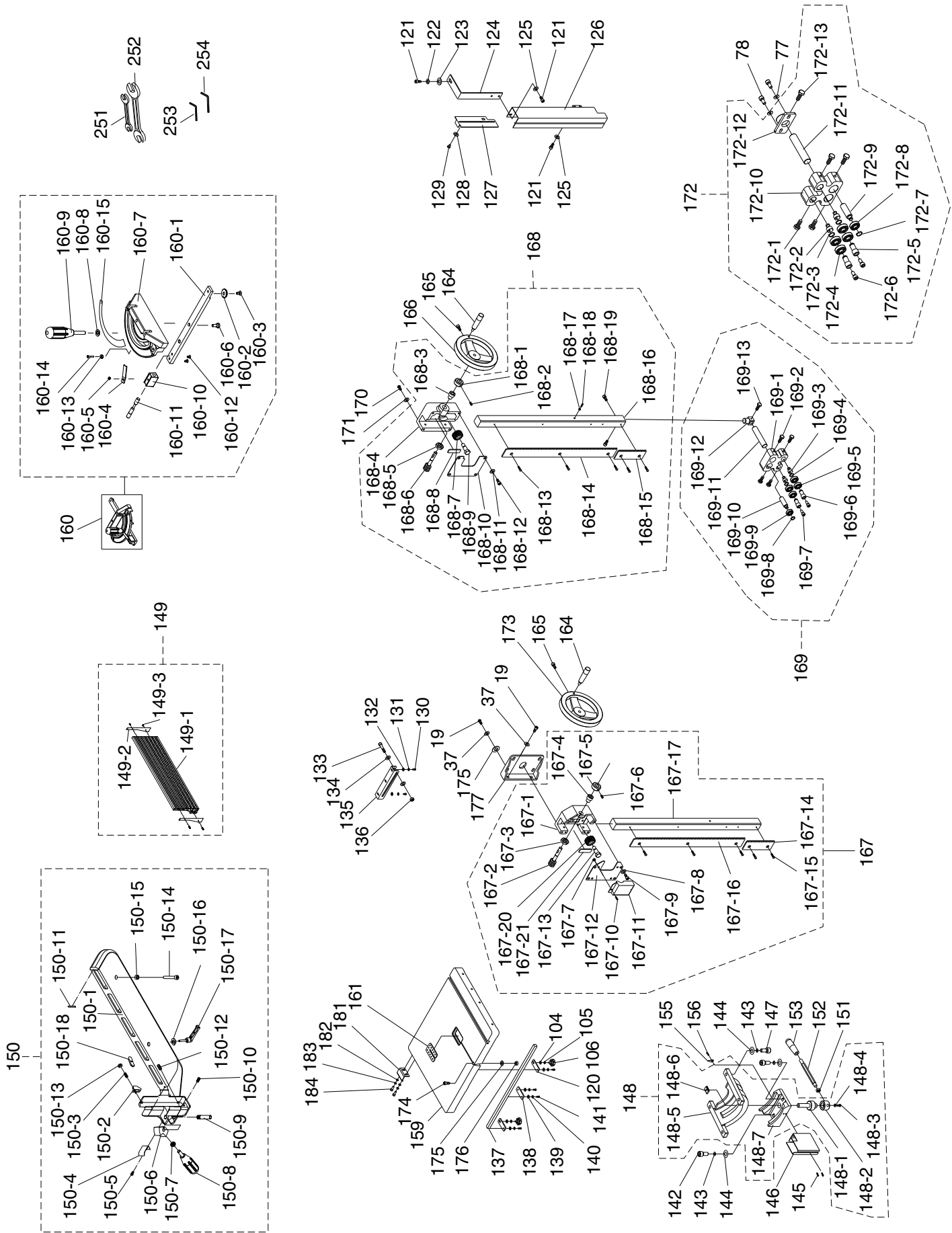
Main Parts List Continued

REF	PART #	DESCRIPTION
101	PS52M	PHLP HD SCR M4-.7 X 20
102	P0636X102	TERMINAL BLOCK
103	P0531B080	MAGNETIC SWITCH MPE-18 22A
103-1	P0531B080	MAG SWITCH BACK COVER
103-2	P0531B080-1	CONTACTOR SDE MA-18 220V
103-3	P0531B080-2	RELAY SDE RA-30 (18-26)
103-4	P0531B080-3	MAG SWITCH FRONT COVER
103-5	P0531B080-4	CORD 0.75MM X 5C
103-6	P0636XB103-6	POWER CORD 12AWG X 3C
103-7	P0636XB103-7	MOTOR CORD 12AWG X 5C
103-8	PFS07M	FLANGE SCREW M5-.8 X 10
103-9	PFS07M	RECTIFIER (PU-23-2)
107	P0636XB107	STRAIN RELIEF M13.5

REF	PART #	DESCRIPTION
108	P0636X108	PLATE
109	P0636X109	SWITCH CORD
110	PW05M	FLAT WASHER 4MM
111	P0636X111	DOOR LATCH SWITCH ADZ-S11
111-1	P0636X111-1	DOOR LATCH
112	PFS10M	FLANGE SCREW M4-.7 X 35
113	PS38M	PHLP HD SCR M4-.7 X 10
114	P0636X114V2	UPPER WHEEL COVER V2.06.08
115	P0636X115	LOWER WHEEL COVER
116	P0636X116	SAW BLADE 3TPI 162" X 1" X 0.035
117	PHTEK15M	TAP SCREW M4 X 10
118	P0636X118	CORD CLAMP 5/16"
255	P0636X255	EYE BOLT M10-1.5- X 15



Table-Fence-Trunnion Breakdown



Model G0636XB



Table-Fence-Trunnion Parts List

REF	PART #	DESCRIPTION
19	PSB31M	CAP SCREW M8-1.25 X 25
37	PLW04M	LOCK WASHER 8MM
77	PW03M	FLAT WASHER 6MM
78	PFS11M	FLANGE SCREW M6-1 X 10
104	PW01M	FLAT WASHER 8MM
105	PLW04M	LOCK WASHER 8MM
106	PB09M	HEX BOLT M8-1.25 X 20
120	P0636XB120	OUTER RAIL PLATE
121	PSB04M	CAP SCREW M6-1 X 10
122	PLW03M	LOCK WASHER 6MM
123	PW03M	FLAT WASHER 6MM
124	P0636X222	SUPPORT PLATE
125	PW03M	FLAT WASHER 6MM
126	P0636X224	PROTECT COVER (ASM)
127	P0636X225	SLIDING PLATE
128	P0636X226	FIBER WASHER 13MM
129	P0636X227	SHOULDER SCREW
130	PSB04M	CAP SCREW M6-1 X 10
131	PLW03M	LOCK WASHER 6MM
132	PW03M	FLAT WASHER 6MM
133	PB30M	HEX BOLT M8-1.25 X 55
134	PW01M	FLAT WASHER 8MM
135	P0636X233	SLIDING PLATE
136	PLN04M	LOCK NUT M8-1.25
137	P0636X137	GUARD RAIL
138	P0636X138	GUARD RAIL PLATE
139	PW01M	FLAT WASHER 8MM
140	PLW04M	LOCK WASHER 8MM
141	PSB14M	CAP SCREW M8-1.25 X 20
142	PSB72M	CAP SCREW M10-1.5 X 30
143	PLW06M	LOCK WASHER 10MM
144	PW04M	FLAT WASHER 10MM
145	PFS11M	FLANGE SCREW M6-1 X 10
146	P0636X146	BLADE GUARD
147	PSB84M	CAP SCREW M10-1.5 X 35
148	P0636XB148	TRUNNION BRACKET ASSEMBLY
148-1	P0566168	PRESS SHAFT
148-2	P0636X149	MICRO ADJUSTING RING
148-3	PSB14M	CAP SCREW M8-1.25 X 20
148-4	PLW04M	LOCK WASHER 8MM
148-5	P0566177	TRUNNION BLOCK
148-6	P0566178	PRESS BLOCK
148-7	P0636X154	TRUNNION HOUSING
149	P0513X2B156	RESAW FENCE ASSEMBLY
149-1	P0513X2B156-1	RESAW FENCE(AL) 590MM
149-2	P0636X122	TAP SCREW 3.5 X 8
149-3	P0636X123	FENCE PIECE 148 X 22 X 1
150	P0513X2B157	FENCE ASSMBLY
150-1	P0513X2B157-1	FENCE
150-2	P0513X2B157-2	POINTER
150-3	PSS09M	SET SCREW M8-1.25 X 20
150-4	P0513X2B157-4	SPRING PIECE

REF	PART #	DESCRIPTION
150-5	PFS17M	FLANGE SCREW M4-.7 X 8
150-6	P0513X2B157-6	PIVOT BLOCK
150-7	PN03M	HEX NUT M8-1.25
150-8	P0513X2B157-8	HANDLE
150-9	P0513X2B157-9	SHAFT
150-10	P0513X2B157-10	SPECIAL PLASTIC SET SCREW
150-11	P0513X2B157-11	NYLON PAD
150-12	PSS14M	SET SCREW M8-1.25 X 12
150-13	PN03M	HEX NUT M8-1.25
150-14	PSB100M	CAP SCREW M8-1.25 X 15
150-15	PN03M	HEX NUT M8-1.25
150-16	PW01M	FLAT WASHER 8MM
150-17	P0513X2B157-17	LOCK HANDLE M8-1.25 X 44
150-18	P0513X2B157-18	MOVING PLATE
151	PN09M	HEX NUT M12-1.75
152	P0636X152	HANDLE SHAFT
153	P0636X153	HANDLE KNOB M12-1.75 (FEMALE)
155	P0636X155	POINTER
156	PS38M	PHLP HD SCR M4-.7 X 10
159	P0636X159	TABLE
160	P0636XB160	MITER GAUGE ASSEMBLY
160-1	P0513X2B152-1	GUIDE BAR
160-2	P0513X2B152-2	GUIDE PIECE
160-3	PFH04M	FLAT HD SCR M6-1 X 8
160-4	P0513X2B152-4	POINTER
160-5	PS06	PHLP HD SCR 10-24 X 3/8
160-6	P0513X2B152-6	SHOULDER SCREW
160-7	P0513X2B152-7	MITER GAUGE BODY
160-8	PW01M	FLAT WASHER 8MM
160-9	P0513X2B152-9	HANDLE
160-10	P0513X2B152-10	FIXED BLOCK
160-11	P0513X2B152-11	LOCKING SHAFT
160-12	PS06	PHLP HD SCR 10-24 X 3/8
160-13	PN04M	HEX NUT M4-.7
160-14	PS56M	PHLP HD SCR M4-.7 X 16
160-15	P0513X2B152-15	SCALE
161	P0636X161	TABLE INSERT
164	P0636X164	HANDLE 3/8-16 X 1/2
165	PSB06M	CAP SCREW M6-1 X 25
166	P0636X166	HANDWHEEL 7" (STEEL)
167	P0636XB167	GUIDE BRACKET ASSEMBLY
167-1	P0566198	GUIDE BRACKET
167-2	P0566196	WORM SHAFT
167-3	PN05M	HEX NUT M16-1.5
167-4	P0566201	BUSHING
167-5	P0566202	SWITCH BUSHING
167-6	PSS07M	SET SCREW M5-.8 X 5
167-7	PN06M	HEX NUT M5-.8
167-8	PLW04M	LOCK WASHER 8MM
167-9	PSB11M	CAP SCREW M8-1.25 X 16
167-10	PFS07M	FLANGE SCREW M5-.8 X 10
167-11	P0566187	COVER

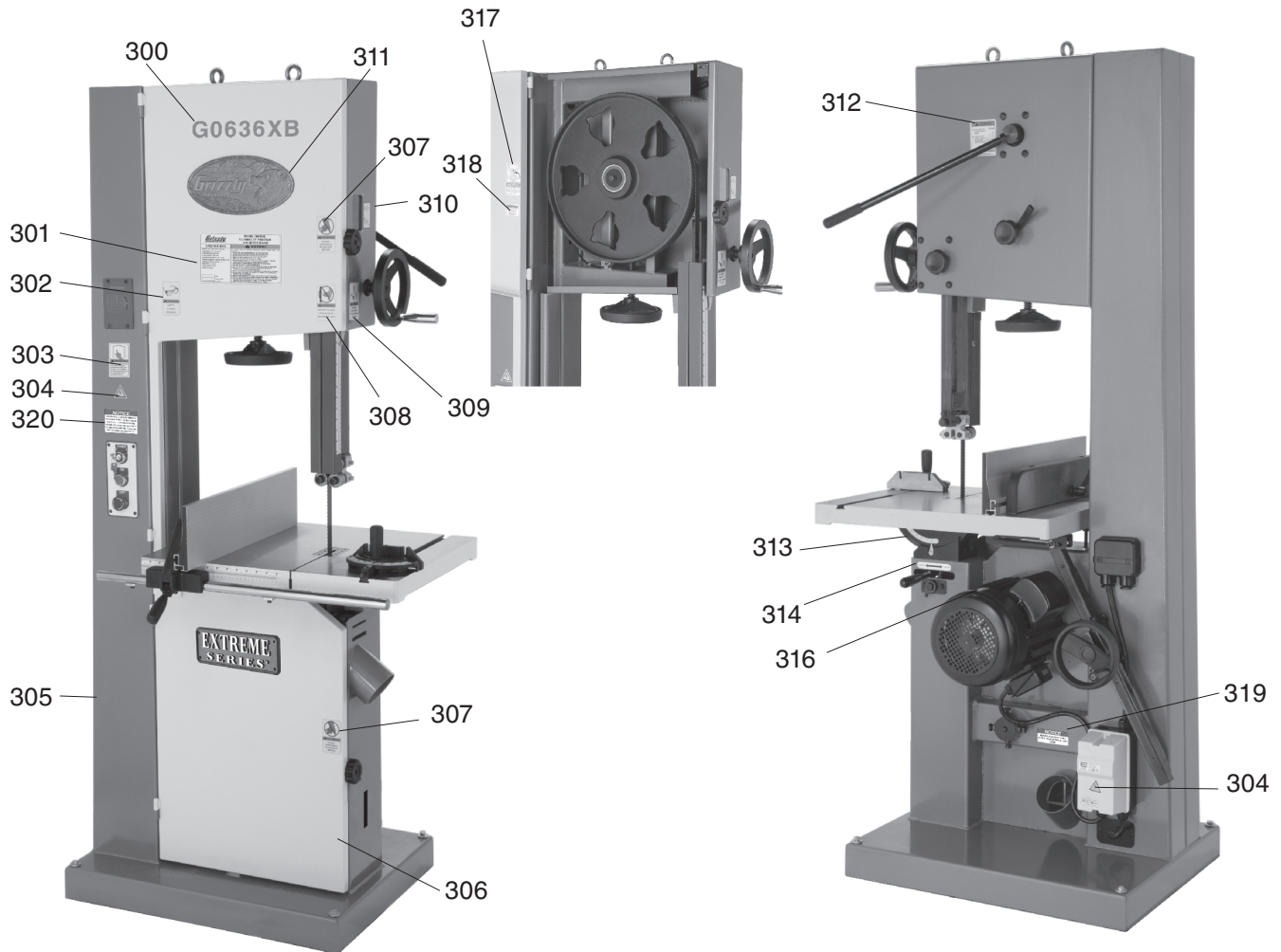


REF	PART #	DESCRIPTION
167-12	P0566192	COVER
167-13	P0636XB167-13	FIXED BOLT
167-14	P0566191	EXTENSION RACK
167-15	PFH19M	FLAT HD SCR M4-.7 X 10
167-16	P0566207	RACK
167-17	P0566206	UPPER GUIDE BAR
167-20	P0566194	PINION GEAR
167-21	P0566195	FIXED PLATE
168	P0636XB168	UPPER GUIDE ASSEMBLY
168-1	P0636X167	SWITCH BUSHING
168-2	PSS07M	SET SCREW M5-.8 X 5
168-3	P0636X169	BUSHING
168-4	P0636X172	UPPER GUIDE BRACKET
168-5	PN05M	HEX NUT M16-1.5
168-6	P0636X174	WORM SHAFT
168-7	P0636X175	WORM GEAR
168-8	P0636X176	FIXED PLATE
168-9	P0636X177	FIXED BOLT
168-10	P0636X178	COVER
168-11	PLW04M	LOCK WASHER 8MM
168-12	PB06M	HEX BOLT M8-1.25 X 12
168-13	PFH19M	FLAT HD SCR M4-.7 X 10
168-14	P0636X182	RACK
168-15	P0636X183	EXTENSION RACK
168-16	P0636X186	UPPER GUIDE BAR
168-17	PN04M	HEX NUT M4-.7
168-18	PS38M	PHLP HD SCR M4-.7 X 10
168-19	PSB01M	CAP SCREW M6-1 X 16
169	P0636XB169	UPPER BLADE GUIDE ASSEMBLY
169-1	P0636X240	UPPER BLADE GUIDE SUPPORT
169-2	PB83M	HEX BOLT M6-1 X 16
169-3	P0636X242	ECCENTRIC SHAFT
169-4	PR05M	EXT RETAINING RING 15MM
169-5	P6202	BALL BEARING 6202ZZ
169-6	P0636X245	HANDLE BUSHING
169-7	PSB29M	CAP SCREW M6-1 X 40

REF	PART #	DESCRIPTION
169-8	PR03M	EXT RETAINING RING 12MM
169-9	P6201	BALL BEARING 6201ZZ
169-10	P0636X249	UPPER SPACING SLEEVE
169-11	P0636X250	SHAFT
169-12	P0636X184	UPPER GUIDE SUPPORT BLOCK
169-13	PB04M	HEX BOLT M6-1 X 10
170	PSBS04M	BUTTON HD CAP SCR M8-1.25 X 35
171	PW01M	FLAT WASHER 8MM
172	P0636XB172	LOWER BLADE GUIDE ASSEMBLY
172-1	PB83M	HEX BOLT M6-1 X 16
172-2	P0636X242	ECCENTRIC SHAFT
172-3	PR05M	EXT RETAINING RING 15MM
172-4	P6202	BALL BEARING 6202ZZ
172-5	P0636X245	HANDLE BUSHING
172-6	PSB29M	CAP SCREW M6-1 X 40
172-7	PR03M	EXT RETAINING RING 12MM
172-8	P6201	BALL BEARING 6201ZZ
172-9	P0636X249	UPPER SPACING SLEEVE
172-10	P0636X240	UPPER BLADE GUIDE SUPPORT
172-11	P0636X239	SHAFT
172-12	P0636X238	LOWER SUPPORT BRACKET
172-13	PB83M	HEX BOLT M6-1 X 16
173	P0636XB173	HANDWHEEL 6-1/2" (PLASTIC)
174	PB166M	HEX BOLT M8-1.25 X 50
175	PW01M	FLAT WASHER 8MM
176	PN03M	HEX NUT M8-1.25
177	P0636XB177	SUPPORT PLATE
181	P0636XB181	STOP BRACKET
182	PLW03M	LOCK WASHER 6MM
183	PW03M	FLAT WASHER 6MM
184	PB83M	HEX BOLT M6-1 X 16
251	PWR1013	WRENCH 10/13
252	PWR1719	WRENCH 17/19
253	PAW05M	HEX WRENCH 5MM
254	PAW06M	HEX WRENCH 6MM



Labels Breakdown



REF	PART #	DESCRIPTION
300	P0636XB300	MODEL NUMBER LABEL
301	P0636XB301	MACHINE ID LABEL
302	PLABEL-11	SAFETY GLASSES LABEL
303	PLABEL-12	READ MANUAL LABEL
304	PLABEL-14	ELECTRICITY LABEL
305	PPAINT-1	GRIZZLY GREEN PAINT
306	PPAINT-11	GREY PUTTY TOUCH UP PAINT
307	PLABEL-20	DONT OPEN LABEL 2"W X 3 5/16"H
308	PLABEL-19	HANDS/BS BLADE LABEL 2" X 3 5/16"H
309	PLABEL-18	UNPLUG BANDSAW LABEL 2" X 3 5/16"H

REF	PART #	DESCRIPTION
310	P0636X310	BLADE ASSEMBLY DIRECTION LABEL
311	G8589	GRIZZLY NAMEPLATE-LARGE
312	P0636X312	TENSION ADJ LABEL
313	P0636X313	TABLE ANGLE SCALE
314	P0636X314	TABLE LOCK LEVER LABEL
316	P0636X316B	MOTOR LABEL
317	P0636X317	UPPER WHEEL HINGE/STOP BOLT LABEL
318	P0636X318	PATENT LABEL
319	P0566313	TABLE LOCK LABEL
320	P0636XB320	MAGNETIC BRAKE NOTICE

WARNING

Safety labels warn about machine hazards and ways to prevent injury. The owner of this machine **MUST** maintain the original location and readability of the labels on the machine. If any label is removed or becomes unreadable, **REPLACE** that label before using the machine again. Contact Grizzly at (800) 523-4777 or www.grizzly.com to order new labels.



Free Manuals Download Website

<http://myh66.com>

<http://usermanuals.us>

<http://www.somanuals.com>

<http://www.4manuals.cc>

<http://www.manual-lib.com>

<http://www.404manual.com>

<http://www.luxmanual.com>

<http://aubethermostatmanual.com>

Golf course search by state

<http://golfingnear.com>

Email search by domain

<http://emailbydomain.com>

Auto manuals search

<http://auto.somanuals.com>

TV manuals search

<http://tv.somanuals.com>