



# MODEL H0596 AIR BELT SANDER INSTRUCTION SHEET

## ⚠ WARNING



**EYE INJURY HAZARD!**  
Always wear safety glasses when using this tool to prevent serious personal injury.



**INJURY HAZARD!**  
Always disconnect tool from air to prevent unexpected operation during service.



**DUST HAZARD!**  
Always wear respirator when using this tool.

## Introduction

This 25,000 RPM air belt sander requires 90 PSI, 4 CFM, and 3/8" x 13" sanding belts. Four-pack sanding belts (Model H2322) can be purchased separately for the Model H0596.

## Inventory

- A. Air Belt Sander ..... 1
- B. 3/8" x 13" Sanding Belts ..... 2
- C. Hex Wrench 3mm ..... 1

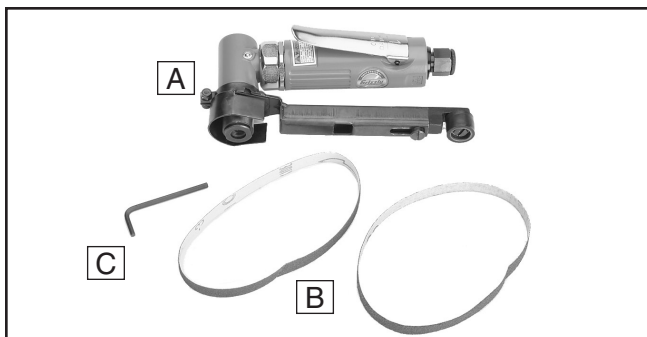


Figure 1. Model H0596.

## Adjusting Platen and Attaching Belt

To adjust the platen:

- Using the hex wrench, loosen the cap screw and hex nut shown in **Figure 2** and turn the platen to the desired operating angle.



Figure 2. Loosening cap screw and hex nut.

- Make sure the platen and housing surfaces (**Figure 3A**) are seated and flush with one another. If these mounting surfaces are not square, remove the platen from the housing (**Figure 3B**) and reseat the platen and clamp nut.

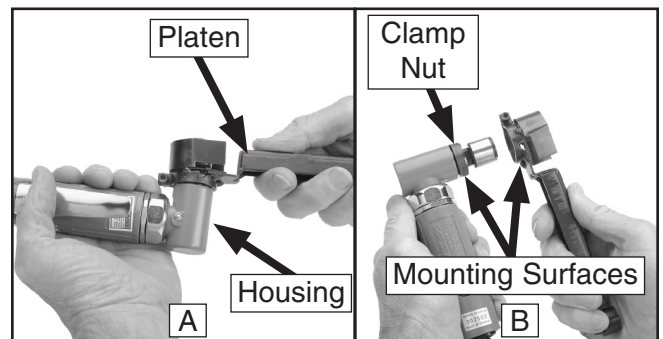


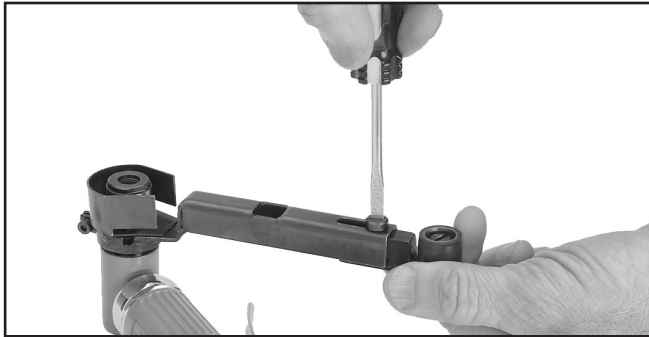
Figure 3. Squaring mounting surfaces.

- Tighten the cap screw and hex nut loosened in **Step 1**.

COPYRIGHT © MAY, 2006 BY GRIZZLY INDUSTRIAL, INC.  
**WARNING: NO PORTION OF THIS MANUAL MAY BE REPRODUCED IN ANY SHAPE OR FORM WITHOUT THE WRITTEN APPROVAL OF GRIZZLY INDUSTRIAL, INC.**  
 #BL8253 PRINTED IN TAIWAN

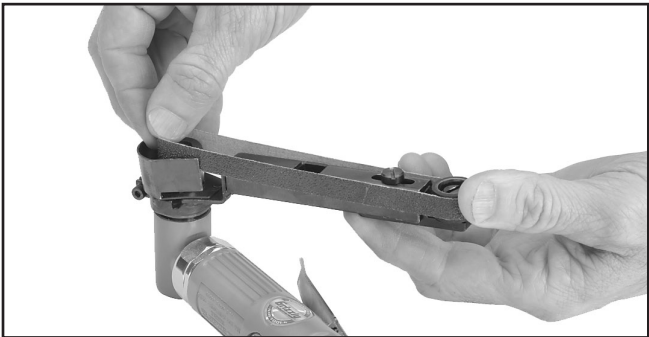
### To attach the sanding belt:

1. Loosen the screw on the platen (**Figure 4**), press the wheel inward, and tighten the screw.



**Figure 4.** Loosening screw on platen.

2. Install the sanding belt as shown in **Figure 5**.



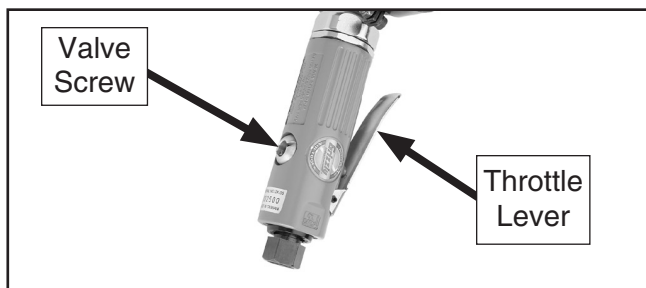
**Figure 5.** Installing sanding belt.

3. Loosen the screw shown in **Figure 4** to automatically tension the belt.

### Operation

#### To operate the sander:

1. Plug the sander into compressed air.
2. Hold the sander and push the throttle lever (**Figure 6**) to operate the sander and adjust the speed. Turn the valve screw to set the maximum belt speed.



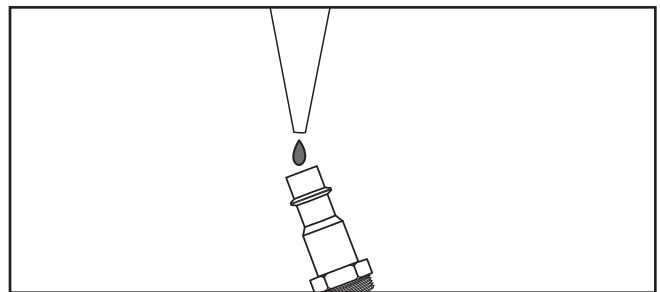
**Figure 6.** Sander controls.

3. Remove pressure on the throttle lever to stop the sander.
4. When the sanding belt loses its effectiveness, **disconnect the sander from air**, remove the belt and replace with a new one.

### Maintenance

Lubricate at the beginning of the sanding task. Place one or two drops of pneumatic tool oil directly into the air fitting as shown in **Figure 7**.

A filter/lubricator/regulator set up is not recommended, as excess oil in the tool could spray onto the workpiece.



**Figure 7.** Lubricating directly into air fitting.

Also, apply one to two squirts of non-detergent motor oil, such as SAE 20W, into the oil ball shown in **Figure 8**.

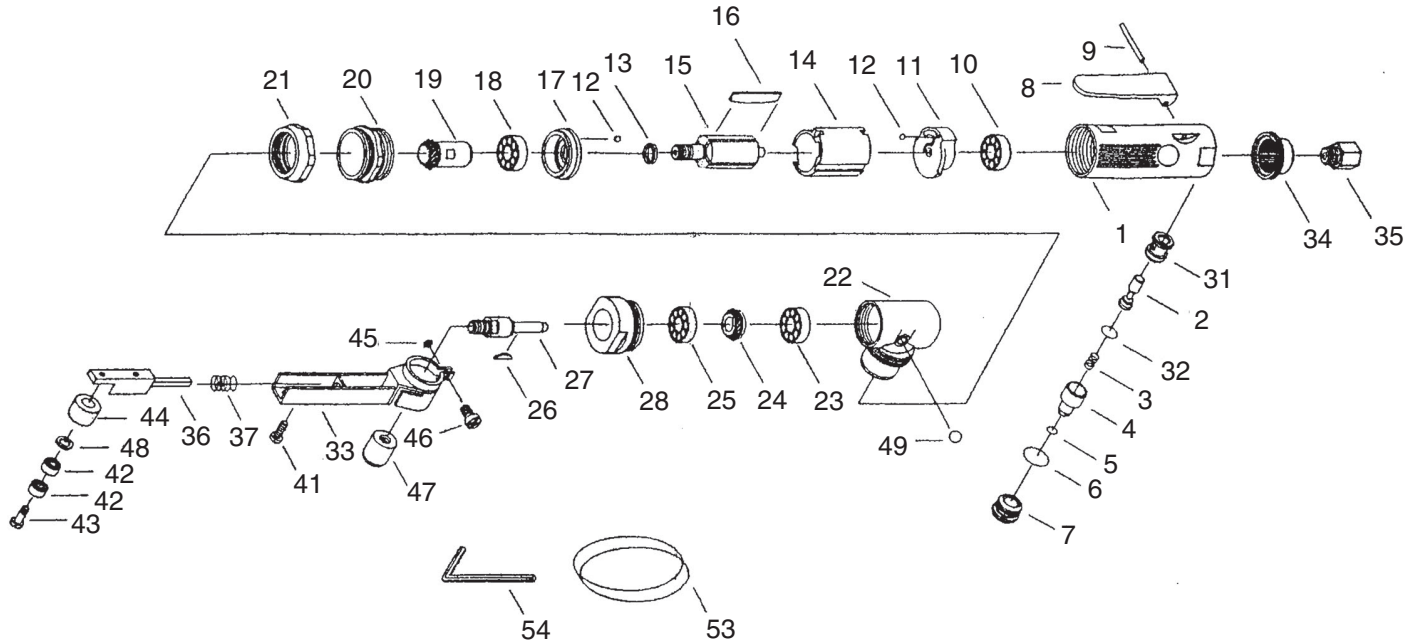


**Figure 8.** Oil ball.

Run the sander for a few minutes to eject excess oil, then wipe the tool down with a rag and begin sanding. Oil the tool after use or storage.

*If you need help with your new pneumatic tool, call our Tech Support at: (570) 546-9663.*

# H0596 Parts Breakdown and List



REF	PART #	DESCRIPTION
1	PH0596001	MOTOR HOUSING
2	PH0596002	THROTTLE VALVE
3	PH0596003	THROTTLE VALVE SPRING 3.8 X 14
4	PH0596004	AIR REGULATOR
5	PH0596005	O-RING 7 X 1.4
6	PH0596006	O-RING 12 X 2
7	PH0596007	VALVE SCREW M14-1.25 X 9.2
8	PH0596008	THROTTLE LEVER
9	PH0596009	THROTTLE LEVER PIN
10	P696	BALL BEARING 696ZZ
11	PH0596011	REAR END PLATE
12	PH0596012	BALL
13	PH0596013	ROTOR COLLAR
14	PH0596014	CYLINDER
15	PH0596015	ROTOR
16	PH0596016	ROTOR BLADE
17	PH0596017	FRONT END PLATE
18	P608	BALL BEARING 608ZZ
19	PH0596019	PINION
20	PH0596020	MOTOR CLAMP
21	PH0596021	HOUSING LOCK RING
22	PH0596022	ANGLE HEAD BUSHING
23	P696	BALL BEARING 696ZZ

REF	PART #	DESCRIPTION
24	PH0596024	SPINDLE GEAR
25	P608	BALL BEARING 608ZZ
26	PH0596026	WOODRUFF KEY 2 X 4.2
27	PH0596027	SPINDLE
28	PH0596028	CLAMP NUT M24-1.25 X 14
31	PH0596031	THROTTLE VALVE BUSHING
32	PH0596032	O-RING
33	PH0596033	BELT SET
34	PH0596034	EXHAUST SLEEVE
35	PH0596035	HOSE ADAPTER
36	PH0596036	ADJUSTMENT BAR
37	PH0596037	COMPRESSION SPRING 10 X 37
41	PSB23M	CAP SCREW M4-.7 X 12
42	G3855	BALL BEARING 695ZZ
43	PSB20M	CAP SCREW M5-.8 X 14
44	PH0596044	BELT WHEEL
45	PLN01M	LOCK NUT M4-.7
46	PSB23M	CAP SCREW M4-.7 X 12
47	PH0596047	BELT WHEEL
48	PH0596048	SPACER 5MM
49	PH0596049	OIL BALL
53	PH0596053	SANDING BELT 3/8" x 13"
54	PAW03M	HEX WRENCH 3MM



## Free Manuals Download Website

<http://myh66.com>

<http://usermanuals.us>

<http://www.somanuals.com>

<http://www.4manuals.cc>

<http://www.manual-lib.com>

<http://www.404manual.com>

<http://www.luxmanual.com>

<http://aubethermostatmanual.com>

Golf course search by state

<http://golfingnear.com>

Email search by domain

<http://emailbydomain.com>

Auto manuals search

<http://auto.somanuals.com>

TV manuals search

<http://tv.somanuals.com>