

# *Grizzly* *Industrial, Inc.*®

## ADJUSTABLE SPONGE SANDER MODEL G0565 INSTRUCTION MANUAL



COPYRIGHT © AUGUST, 2004 BY GRIZZLY INDUSTRIAL, INC.  
**WARNING: NO PORTION OF THIS MANUAL MAY BE REPRODUCED IN ANY SHAPE  
OR FORM WITHOUT THE WRITTEN APPROVAL OF GRIZZLY INDUSTRIAL, INC.**  
#EW6331 PRINTED IN TAIWAN

# WARNING

Some dust created by power sanding, sawing, grinding, drilling, and other construction activities contains chemicals known to the State of California to cause cancer, birth defects or other reproductive harm. Some examples of these chemicals are:

- Lead from lead-based paints.
- Crystalline silica from bricks, cement, and other masonry products.
- Arsenic and chromium from chemically treated lumber.

Your risk from these exposures varies, depending on how often you do this type of work. To reduce your exposure to these chemicals: work in a well ventilated area, and work with approved safety equipment, such as those dust masks that are specially designed to filter out microscopic particles.

# Table of Contents

<b>INTRODUCTION</b> .....	<b>2</b>
Foreword .....	2
Contact Info .....	2
Machine Data Sheet.....	3
Identification .....	4
<b>SECTION 1: SAFETY</b> .....	<b>5</b>
Safety Instructions for Machinery.....	5
Additional Safety Instructions for Sanders .....	7
<b>SECTION 2: CIRCUIT REQUIREMENTS</b> .....	<b>8</b>
220V Single-Phase .....	8
<b>SECTION 3: SET UP</b> .....	<b>9</b>
About this Section .....	9
Items Needed For Set Up .....	9
Unpacking .....	9
Inventory.....	10
Site Considerations .....	10
Clean Up .....	11
Rubber Feet .....	11
Dust Collection .....	11
Test Run.....	12
<b>SECTION 4: OPERATIONS</b> .....	<b>13</b>
Operation Safety .....	13
Sanding Belts .....	13
Belt Tracking .....	14
Belt Tilt .....	15
Dust Hoods .....	15
Sanding .....	16
Sanding Drums .....	16
<b>SECTION 5: ACCESSORIES</b> .....	<b>17</b>
<b>SECTION 6: MAINTENANCE</b> .....	<b>19</b>
General.....	19
Cleaning .....	19
G0565 Parts Breakdown .....	20
G0565 Parts List .....	23
Troubleshooting.....	25
<b>Warranty and Returns</b> .....	<b>26</b>

# INTRODUCTION

---

---

## Foreword

---

---

We are proud to offer the Model G0565 Adjustable Sponge Sander. This machine is part of a growing Grizzly family of fine woodworking machinery. When used according to the guidelines set forth in this manual, you can expect years of trouble-free, enjoyable operation and proof of Grizzly's commitment to customer satisfaction.

We are pleased to provide this manual with the Model G0565. It was written to guide you through assembly, review safety considerations, and cover general operating procedures. It represents our effort to produce the best documentation possible.

The specifications, drawings, and photographs illustrated in this manual represent the Model G0565 as supplied when the manual was prepared. However, owing to Grizzly's policy of continuous improvement, changes may be made at any time with no obligation on the part of Grizzly. For your convenience, we always keep current Grizzly manuals available on our website at [www.grizzly.com](http://www.grizzly.com). Any updates to your machine will be reflected in these manuals as soon as they are complete. Visit our site often to check for the latest updates to this manual!



## Contact Info

---

---

If you have any comments regarding this manual, please write to us at the address below:

Grizzly Industrial, Inc.  
c/o Technical Documentation  
P.O. Box 2069  
Bellingham, WA 98227-2069

We stand behind our machines. If you have any service questions or parts requests, please call or write us at the location listed below.

Grizzly Industrial, Inc.  
1203 Lycoming Mall Circle  
Muncy, PA 17756  
Phone: (570) 546-9663  
Fax: (800) 438-5901  
E-Mail: [techsupport@grizzly.com](mailto:techsupport@grizzly.com)  
Web Site: <http://www.grizzly.com>





# MACHINE DATA SHEET

Customer Service #: (570) 546-9663 • To Order Call: (800) 523-4777 • Fax #: (800) 438-5901

## MODEL G0565 SPONGE SANDER

Design Type ..... Floor Model

### Overall Dimensions and Specifications:

Width ..... 39"  
 Height ..... 54"  
 Depth ..... 23"  
 Footprint ..... 22½" x 19"  
 Cabinet Height (Stand) ..... 29½"  
 Drum Height (From Floor) ..... 37½"  
 Drum (Sponge) ..... 4" x 6"L x 1" Hole  
 Shaft ..... 1" x 9"L  
 Crate Size ..... 40"W x 19½"D x 40½"H  
 Shipping Weight ..... 167 lbs  
 Net Weight ..... 158 lbs

### Construction:

Stand ..... Heavy-Gauge Sheet Metal  
 Motor Housing ..... Cast Iron  
 Drive Drums ..... Sponge  
 Secondary Drums ..... Aluminum  
 Dust Collection Shrouds ..... Heavy-Gauge Formed Plastic

### Motor:

Type ..... Induction  
 Horsepower ..... 1 HP  
 Phase / Voltage ..... Single Phase / 220V  
 Amps ..... 9A  
 Cycle and RPM ..... 60 Hertz / 1725 RPM  
 Power Transfer ..... Direct Drive  
 Bearings ..... Shielded & Lubricated Ball Bearings

### Features:

..... Performs Two Simultaneous Operations  
 ..... Heavy-Duty Cabinet Stand With Storage Compartment  
 ..... Handwheel and Lever Adjustments For Belt Tension  
 ..... Infinite Horizontal and Vertical Belt Adjustment  
 ..... Two 4" Dust Collection Shrouds

*Specifications, while deemed accurate, are not guaranteed.*

1/2004

# Identification

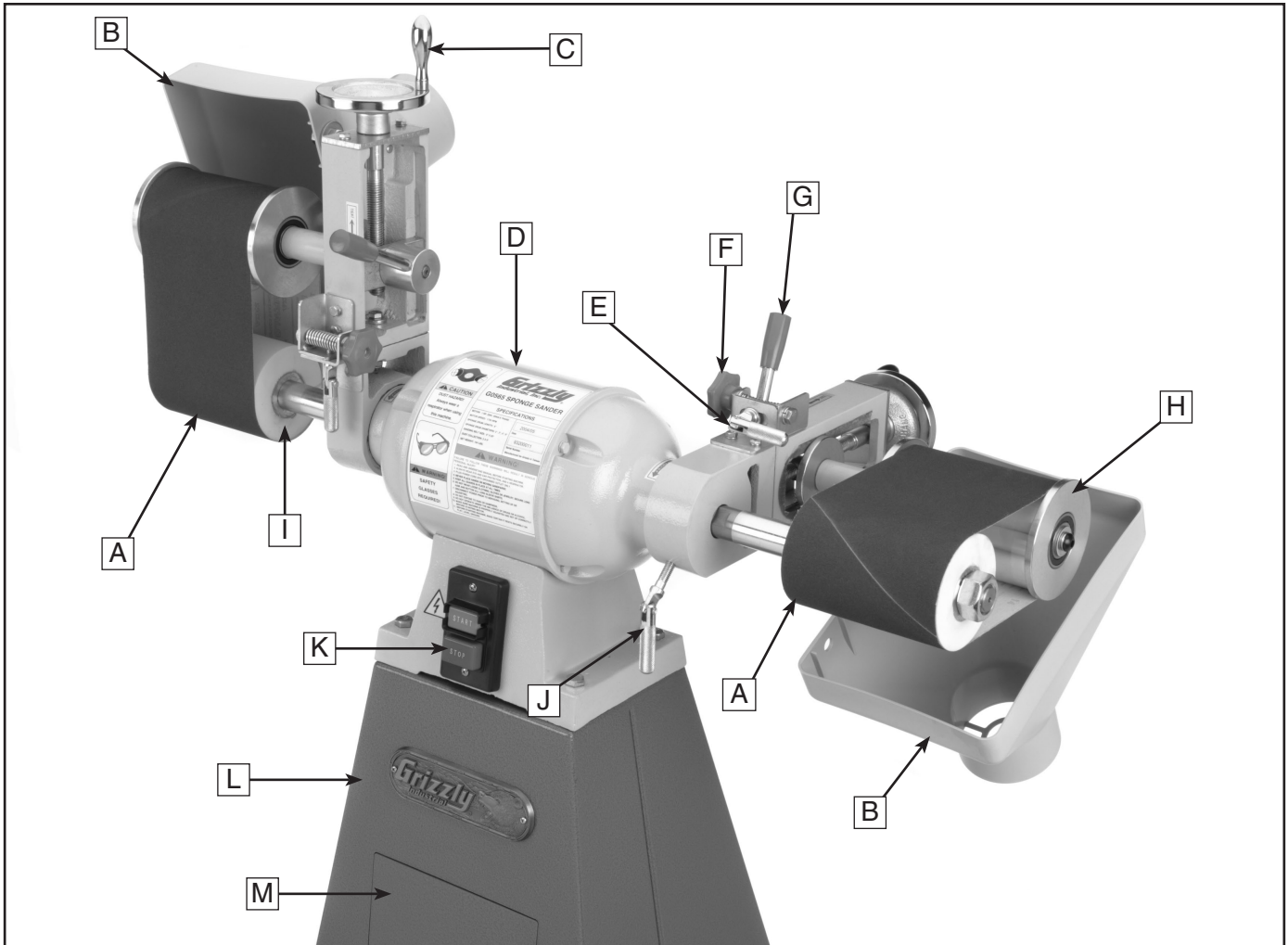


Figure 1. Features and controls.

- |                             |                                |
|-----------------------------|--------------------------------|
| A. Sanding Belt             | H. Aluminium Sanding Drum      |
| B. Dust Hood                | I. Sponge Sanding Drum         |
| C. Belt Tension Handwheel   | J. Belt Rotation Locking Lever |
| D. Motor                    | K. On/Off Switch               |
| E. Tracking Lock Lever      | L. Stand                       |
| F. Tracking Adjustment Knob | M. Storage Compartment         |
| G. Tension Lock Lever       |                                |



# SECTION 1: SAFETY


## **WARNING**

### **For Your Own Safety, Read Instruction Manual Before Operating this Machine**

The purpose of safety symbols is to attract your attention to possible hazardous conditions. This manual uses a series of symbols and signal words which are intended to convey the level of importance of the safety messages. The progression of symbols is described below. Remember that safety messages by themselves do not eliminate danger and are not a substitute for proper accident prevention measures.

 **DANGER** Indicates an imminently hazardous situation which, if not avoided, **WILL** result in death or serious injury.

 **WARNING** Indicates a potentially hazardous situation which, if not avoided, **COULD** result in death or serious injury.

 **CAUTION** Indicates a potentially hazardous situation which, if not avoided, **MAY** result in minor or moderate injury. It may also be used to alert against unsafe practices.

**NOTICE** This symbol is used to alert the user to useful information about proper operation of the machine.

## **WARNING**

### **Safety Instructions for Machinery**

- 1. READ THROUGH THE ENTIRE MANUAL BEFORE STARTING MACHINERY.** Machinery presents serious injury hazards to untrained users.
- 2. MAKE SURE ALL GUARDS ARE IN THEIR CORRECT PLACE AND WORK CORRECTLY BEFORE USING MACHINERY. NEVER OPERATE MACHINE WITHOUT GUARDS.**
- 3. ALWAYS USE ANSI APPROVED SAFETY GLASSES WHEN OPERATING MACHINERY.** Everyday eyeglasses only have impact resistant lenses, they are NOT safety glasses.
- 4. ALWAYS WEAR AN ANSI APPROVED RESPIRATOR WHEN OPERATING MACHINERY THAT PRODUCES DUST.** Wood dust is a carcinogen and can cause cancer and severe respiratory illnesses.
- 5. ALWAYS USE HEARING PROTECTION WHEN OPERATING MACHINERY.** Machinery noise can cause permanent hearing damage.
- 6. WEAR PROPER APPAREL. DO NOT** wear loose clothing, gloves, neckties, rings, or jewelry which may get caught in moving parts. Wear protective hair covering to contain long hair and wear non-slip footwear.

# WARNING

## Safety Instructions for Machinery

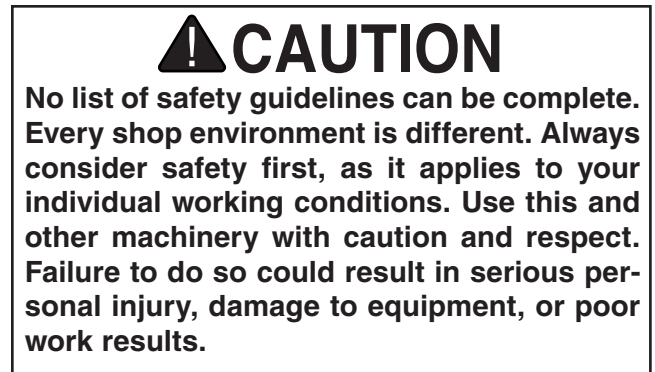
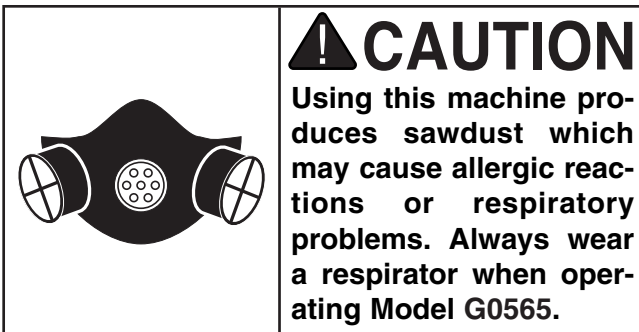
7. **NEVER OPERATE MACHINERY WHEN TIRED, OR UNDER THE INFLUENCE OF DRUGS OR ALCOHOL.** Be mentally alert at all times when running machinery.
8. **ONLY ALLOW TRAINED AND PROPERLY SUPERVISED PERSONNEL TO OPERATE MACHINERY.** Make sure operation instructions are safe and clearly understood.
9. **KEEP CHILDREN AND VISITORS AWAY.** Keep all children and visitors a safe distance from the work area.
10. **MAKE WORKSHOP CHILD PROOF.** Use padlocks, master switches, and remove start switch keys.
11. **NEVER LEAVE WHEN MACHINE IS RUNNING.** Turn power *OFF* and allow all moving parts to come to a complete stop before leaving machine unattended.
12. **DO NOT USE IN DANGEROUS ENVIRONMENTS.** DO NOT use machinery in damp, wet locations, or where any flammable or noxious fumes may exist.
13. **KEEP WORK AREA CLEAN AND WELL LIT.** Clutter and dark shadows may cause accidents.
14. **USE A GROUNDED EXTENSION CORD RATED FOR THE MACHINE AMPERAGE.** Undersized cords overheat and reduce voltage. Replace extension cords if they become damaged. DO NOT use extension cords for 220V machinery.
15. **ALWAYS DISCONNECT FROM POWER SOURCE BEFORE SERVICING MACHINERY.** Make sure switch is in OFF position before reconnecting.
16. **MAINTAIN MACHINERY WITH CARE.** Keep blades sharp and clean for best and safest performance. Follow instructions for lubricating and changing accessories.
17. **REMOVE ADJUSTING KEYS AND WRENCHES.** Make a habit of checking for keys and adjusting wrenches before turning machinery *ON*.
18. **CHECK FOR DAMAGED PARTS BEFORE USING MACHINERY.** Check for binding and alignment of parts, broken parts, part mounting, loose bolts, and any other conditions that may affect machine operation. Repair or replace damaged parts.
19. **USE RECOMMENDED ACCESSORIES.** Refer to the instruction manual for recommended accessories. The use of improper accessories may cause risk of injury.
20. **DO NOT FORCE MACHINERY.** Work at the speed for which the machine or accessory was designed.
21. **SECURE WORKPIECE.** Use clamps or a vise to hold the workpiece when practical. A secured workpiece protects your hands and frees both hands to operate the machine.
22. **DO NOT OVERREACH.** Keep proper footing and balance at all times.
23. **MANY MACHINES WILL EJECT THE WORKPIECE TOWARD THE OPERATOR.** Know and avoid conditions that cause the workpiece to be ejected.
24. **ALWAYS LOCK MOBILE BASES BEFORE OPERATING MACHINERY.**



# ⚠ WARNING

## Additional Safety Instructions for Sanders

- 1. POWER DISCONNECT.** Do all inspections, adjustments, and maintenance with the machine unplugged. Wait for all moving parts to come to a complete stop.
- 2. INSPECTIONS AND MAINTENANCE.** Check the machine for worn or damaged parts before each use. Replace worn parts and clean your machine regularly.
- 3. SANDING BELTS.** DO NOT operate the sander if the sanding belt is damaged or badly worn. Pieces of sandpaper could be ejected from the sander, causing injury.
- 4. DUST COLLECTION.** Never operate the sander without an adequate dust collection system in place and running.
- 5. TEST RUN.** Turn the machine ON, check the tracking, feel for unusual vibrations, and listen for abnormal noises, before working on a workpiece.
- 6. HAND PLACEMENT.** DO NOT place hands near, or in contact with, sanding belt during operation.
- 7. SANDING DIRECTION.** NEVER sand tapered or pointed stock with the point facing the feed direction.
- 8. EXCESSIVE FORCE.** DO NOT attempt to sand faster by applying extra pressure. Doing so greatly increases the chance of personal injury, mechanical damage, or damage to your workpiece.
- 9. SANDING TECHNIQUE.** DO NOT jam the workpiece against the sanding belt. Firmly grasp the workpiece in both hands and ease it against the sanding belt with light pressure.
- 10. SANDING FRAGILE WORKPIECES.** DO NOT sand a workpiece if you doubt its stability or integrity. Inspect all materials carefully for loose knots, cracks, and foreign objects like nails and staples.
- 11. GOOD HABITS.** Develop good habits in your shop and safety will become second-nature to you. Habits – good and bad – are hard to break.



# SECTION 2: CIRCUIT REQUIREMENTS

## 220V Single-Phase

### **!WARNING**

Serious personal injury could occur if you connect the machine to the power source before you have completed the set up process. **DO NOT** connect the machine to the power source until instructed to do so.

### Amperage Draw

The 1 HP motor on the Model G0565 will draw the following amps:

Amperage Draw .....9 Amps

### Circuit Breaker Requirements

Install your machine on a dedicated circuit to reduce the possibility of tripping the circuit breaker. If the circuit breaker frequently trips, have the circuit inspected by a qualified electrician. Never use a larger circuit breaker than stated below, or you will increase the risk of fire.

Circuit Breaker.....10 Amp, 3 Pole

### Plug Type

We recommend using a NEMA 6-15 plug and receptacle to connect your machine to power.

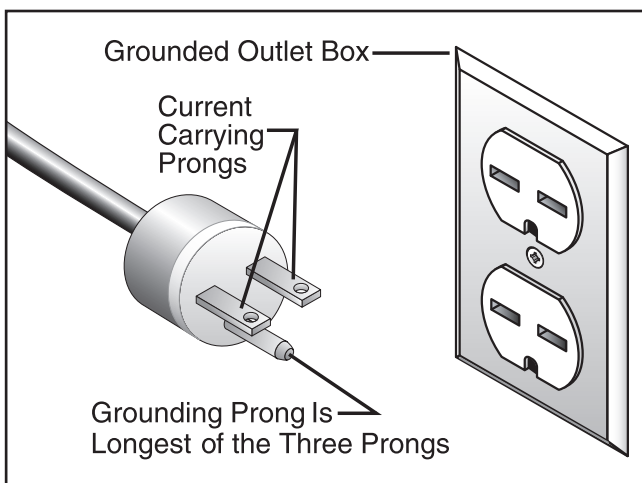
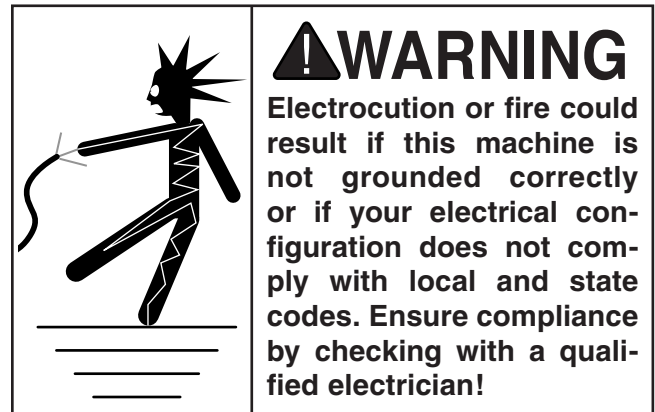


Figure 2. NEMA 6-15 plug and receptacle.

### Grounding

In the event of an electrical short, grounding reduces the risk of electric shock. This tool is equipped with a power cord that has a grounding wire, which must be properly connected to the grounding prong on the plug; likewise, the outlet must be properly installed and grounded. All electrical connections must be made in accordance with local codes and ordinances.



### Your Shop Circuit Capacity

Always check to see if the wires in your circuit are capable of handling the amperage draw from your machine, as well as any other machines that could be operating on the same circuit. If you are unsure, consult a qualified electrician.

### Extension Cords

We do not recommend the use of extension cords on 220V equipment. Instead, arrange the placement of your equipment and the installed wiring to eliminate the need for extension cords.

If you find it absolutely necessary to use an extension cord at 220V with your machine:

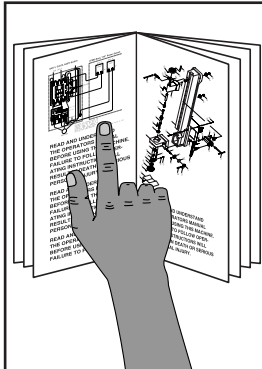
- Make sure the cord is rated for Standard Service (grade S) or better.
- The extension cord must also contain a ground wire and plug prong.
- Use at least a 16 gauge cord and make sure the cord is less than 50 feet long.



# SECTION 3: SET UP

## About this Section

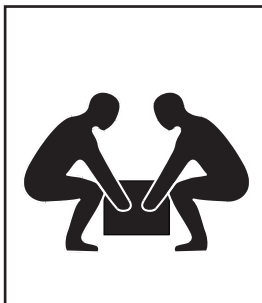
The purpose of this section is to guide you through the required steps to get your machine out of its crate and into operating condition.



**!WARNING**  
This machine presents serious injury hazards to untrained users. Read through this entire manual to become familiar with the controls and operations before starting the machine!



**!WARNING**  
Wear safety glasses during the entire set up process!



**!WARNING**  
The Model G0565 weighs 167 lbs. (Shipping weight). DO NOT over-exert yourself while unpacking or moving your machine—get assistance.



## Items Needed For Set Up

The following items are needed to complete the set up process, but are not included with your machine:

DESCRIPTION	QTY
• Safety Glasses (for each person) .....	1
• Dust Collection System .....	1
• 4" Dust Hose (length as needed) .....	2
• 4" Hose Clamp .....	4
• NEMA 6-15 Plug .....	1
• Flat Head Screwdriver.....	1
• Wrench 9/16" .....	1



## Unpacking

The Model G0565 was carefully packed when it left our warehouse. If you discover the machine is damaged after you have signed for delivery, *please immediately call Customer Service at (570) 546-9663 for advice.*

Save the containers and all packing materials for possible inspection by the carrier or its agent. *Otherwise, filing a freight claim can be difficult.*

When you are completely satisfied with the condition of your shipment, you should inventory the contents.



# Inventory

The Model G0565 Sponge Sander comes almost entirely assembled. The remaining parts can be found in a bag inside the cabinet. After removing the parts from the bag, you should have the following items:

Hardware Bag .....	1
— Hex Nut $\frac{3}{8}$ -16" .....	4
— Flat Washer $\frac{3}{8}$ " .....	4
— Lock Washer $\frac{3}{8}$ " .....	4
— Rubber Feet.....	4
— Open End Wrench 1" .....	1
— Arbor Wrench $1\frac{1}{2}$ " .....	1



**Figure 3.** Parts inventory.

In the event that any nonproprietary parts are missing (e.g. a nut or a washer), we would be glad to replace them, or for the sake of expediency, replacements can be obtained at your local hardware store.



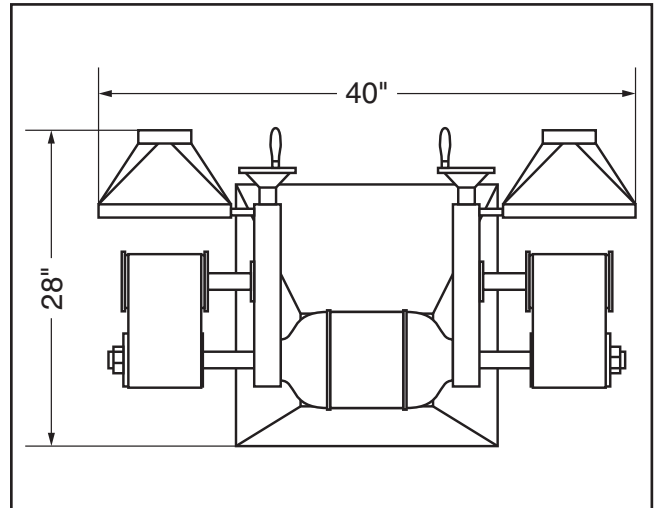
# Site Considerations

## Floor Load

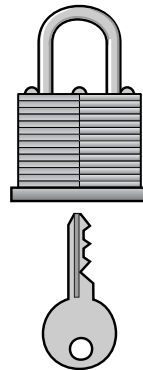
The Model G0565 weighs 167 lbs. and has a base footprint of 22½" W x 19" D. Most commercial floors are suitable for your machine. Some residential floors may require additional reinforcement to support both the machine and operator.

## Working Clearances

Consider existing and anticipated needs, size of material to be processed through each machine, and space for auxiliary stands, work tables or other machinery when establishing a location for your sponge sander. See **Figure 4** for the minimum working clearances of the Model G0565.



**Figure 4.** Working clearances.



## **CAUTION**

**Unsupervised children and visitors inside your shop could cause serious personal injury to themselves. Lock all entrances to the shop when you are away and DO NOT allow unsupervised children or visitors in your shop at any time!**



# Clean Up

---

---

The unpainted surfaces are coated with thin layer of grease to protect them from corrosion during shipment. Wipe off this protective coating with a clean dry rag and apply a solvent cleaner or citrus-based degreaser such as Grizzly's G7895 Degreaser to remove any residue. To clean thoroughly, some parts may need to be removed. **For optimum performance from your machine, make sure you clean all moving parts that are coated.** Avoid chlorine-based solvents as they may damage painted surfaces should they come in contact. Always follow the manufacturer's instructions when using any type of cleaning product.

# Rubber Feet

---

---

<b>Components and Hardware Needed:</b>	<b>Qty</b>
Rubber Feet.....	4
Hex Nut $\frac{3}{8}$ -16".....	4
Lock Washer $\frac{3}{8}$ ".....	4
Flat Washer $\frac{3}{8}$ ".....	4

<b>Tools Needed:</b>	<b>Qty</b>
Socket or Open End Wrench $\frac{9}{16}$ ".....	1
4x4 Block.....	1

### To install the rubber feet:

1. Place one side of the sponge sander on a block—such as a 2X4.
2. Slide the rubber feet through the holes in the flange of the cabinet and secure with a lock washer, flat washer, and a hex nut.
3. Lower the sander onto the feet and place the other side of the sponge sander on a block.
4. Place the remaining feet through the flange holes. Secure with hex nuts and washers.



# Dust Collection

---

---

<b>Components and Hardware Needed:</b>	<b>Qty</b>
Dust Collection System.....	1
4" Dust Hose (length as needed).....	2
4" Hose Clamp.....	4

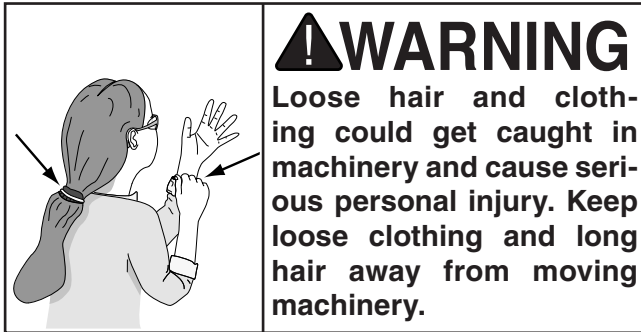
<b>Tools Needed:</b>	<b>Qty</b>
Flat Head Screwdriver.....	1

### To install the dust hoses:

1. Slide the hose clamps onto the dust hoses.
2. Slide the hoses onto the dust hoods and tighten the hose clamps.
3. Attach the hoses to a dust collector.



# Test Run



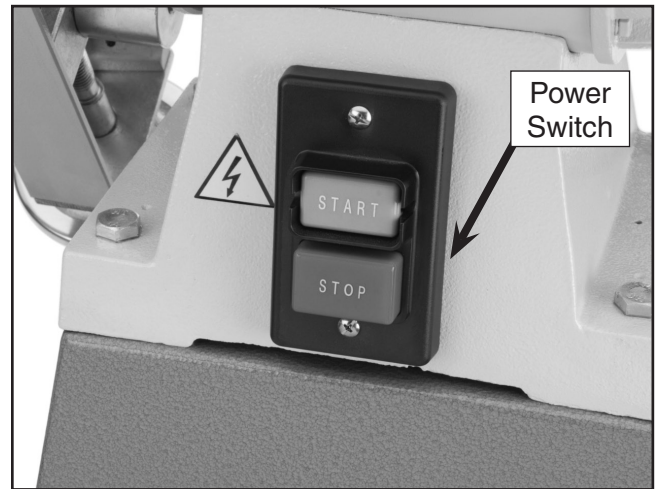
## Before starting the machine:

1. Read this manual and make sure you understand *Section 1: Safety* on **page 5**.
2. Review *Section 3: Circuit Requirements* on **page 8**, and make any necessary changes.
3. Install a NEMA 6-15 220V plug. **DO NOT** plug the sander into the power source at this time.
4. Make sure all tools and foreign objects have been removed from the machine.

## Starting the machine:

1. **Wear safety glasses at all times when running the sander!**
2. Remove the sanding belts as described on **page 13**.

3. Plug the sander into the power source.
4. Push the START button shown in **Figure 5**.
  - If any problems, unusual noises, or vibrations occur, immediately press the STOP button. Turn to *Troubleshooting* on **page 25** and correct the problem before operating the machine further.
  - If you cannot easily locate the source of the problem, unusual noise or vibration by yourself, please contact our service department at (570) 546-9663.



**Figure 5.** Power switch.

5. If the sander seems to be running correctly, let it run for a short time to ensure that the moving parts are working properly. If any problem develops, correct it before attempting to use the machine.

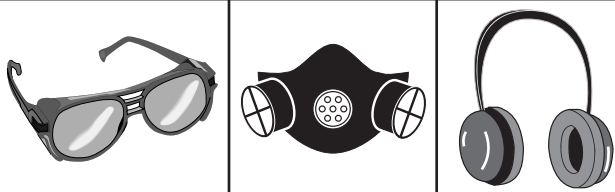


# SECTION 4: OPERATIONS

## Operation Safety

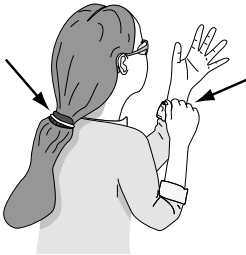
### **!WARNING**

Damage to your eyes, lungs, and ears could result from using this machine without proper protective gear. Always wear safety glasses, a respirator, and hearing protection when operating this machine.



### **!WARNING**

Loose hair and clothing could get caught in machinery and cause serious personal injury. Keep loose clothing and long hair away from moving machinery.



### **NOTICE**

If you have never used this type of machine or equipment before, WE STRONGLY RECOMMEND that you read books, trade magazines, or get formal training before beginning any projects. Regardless of the content in this section, Grizzly Industrial will not be held liable for accidents caused by lack of training.



## Sanding Belts

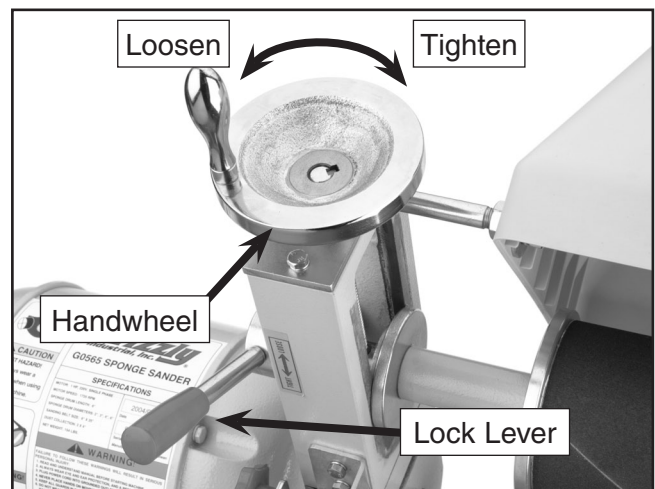
There are many types of sanding belts to choose from. We recommend Aluminum Oxide for general workshop environments. Below is a chart that groups abrasives into different classes, and shows which grits fall into each-class.

Grit	Type
24-36	Very Course
40-60	Course
80-100	Medium
120-180	Fine
220-360	Very Fine

The general rule of thumb is to sand a workpiece with progressively higher grit numbers, with no one grit increase of more than 100.

To replace the sanding belts:

1. **Unplug** the sander from the power source!
2. Loosen the lock lever shown in **Figure 6** and rotate the handwheel to remove the tension on the belt.



**Figure 6.** Sanding belt controls.

3. Remove the belt and place a new belt on the sanding drums.
4. Center the sanding belt on the aluminium drum and the sponge drum.
5. Tension the belt by rotating the handwheel, then lock the belt in place. Note—*The sponge drum will expand when at full RPM, so tension the belt just tight enough that the aluminium drum rotates when the belt is turned by hand.*
4. Move the tracking knob clockwise to move the sanding belt inwards or counter-clockwise to move the belt outwards.
5. Tighten the lock handle.
6. Rotate the sanding belts by hand.
  - If the belt remains centered in the drum, go to **step 7**.
  - If the belt pushes against one edge of the sanding drum, return to **step 3**.



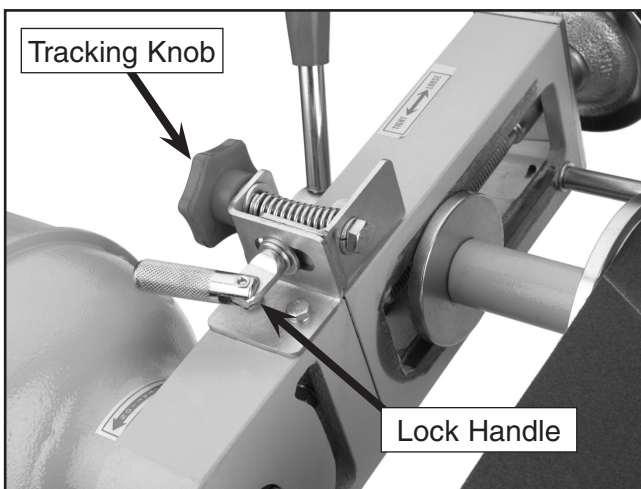
## Belt Tracking

Tracking is the process of adjusting the belts so they remain centered on the drums. Always adjust the tracking after replacing a sanding belt. Neglecting to adjust tracking will damage sanding belts and they will need to be replaced before they are worn out.

### To adjust the sanding belt tracking:

1. **Disconnect the machine from power!**
2. Rotate the sanding belts by hand.
  - If the belt remains centered in the drum, go to **step 7**.
  - If the belt pushes against one edge of the sanding drum, adjust the tracking.
3. Loosen the lock handle shown in **Figure 7**.

7. Connect the sander to power, then turn the sander *ON* and immediately turn it *OFF*.
  - If the belt remains centered in the drum, continue to the next step.
  - If the belt is not tracking correctly, return to **step 3** and make fine adjustments until the sanding belt tracks in the center of the drum.
8. Turn the sander *ON* and allow it to run for several minutes without use.
  - If the belt is not tracking correctly, return to **step 3** and make fine adjustments until the sanding belt tracks in the center of the drum.
  - If the belt remains centered in the drum, the sander is ready for use.



**Figure 7.** Tracking adjustments.



# Belt Tilt

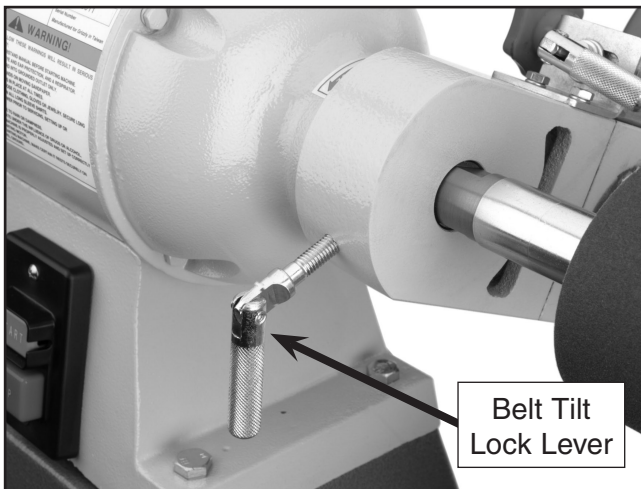
---

---

The sanding belt rotates 360° to best meet the needs of your sanding operation.

**To adjust the sanding belt tilt:**

1. **Disconnect the machine from the power source!**
2. Loosen the belt tilt lock lever (see **Figure 8.**)



**Figure 8.** Belt tilt lock lever.

3. Rotate the sanding belt to the desired angle.
4. Tighten the belt tilt lock lever.



# Dust Hoods

---

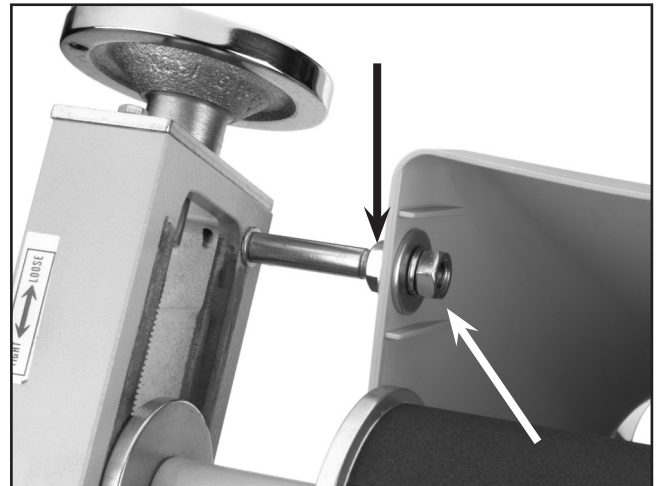
---

The dust hoods easily tilt to funnel the maximum amount of dust into the dust collection system.

**Tools Needed:** Qty  
Wrenches 19mm ..... 2

**To adjust the sanding belt tilt:**

1. **Disconnect the machine from the power source!**
2. Hold the exterior hex nut with a wrench and loosen the interior hex nut (see **Figure 9.**)



**Figure 9.** Dust hood lock nuts.

3. Rotate the dust hood to the desired angle.
4. Hold the exterior hex nut with a wrench and tighten the interior hex nut.



---

---

# Sanding

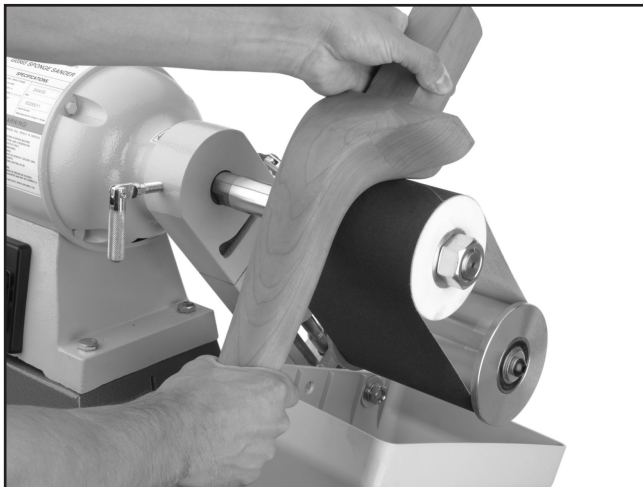
---

---

The extra wide spindles of this sponge sander are designed for sanding large objects and contoured shapes such as chair legs, guitar necks, or gun stocks.

## To sand with the sponge sander:

1. **Wear safety glasses, a dust mask and hearing protection at all times when operating the sander.**
2. Plug the machine into the power source, press the START button and wait for the sander to reach full speed.
3. Gently press the workpiece into the sponge sanding drum as shown in **Figure 10**. Move the workpiece across the entire surface of the sanding belt to achieve the best sanding results and ensure long belt life.



**Figure 10.** Sanding with the sponge sander.



---

---

# Sanding Drums

---

---

The sponge sanding drums will need to be replaced as they wear out, or you may wish to replace the original drums with a different diameter or hardness.

## Tools Needed:

	Qty
Open End Wrench 1" .....	1
Arbor Wrench 1½" .....	1

## To replace the sanding drums:

1. Hold the open end wrench on the flats of the spindle, as shown in **Figure 11**, and use the arbor wrench to remove the nut on the end of the shaft.



**Figure 11.** Replacing the sanding drums.

2. Slide the sanding drum off of the spindle and slide the replacement drum on.
3. Thread the nut onto the spindle and tighten it with the open end and arbor wrenches.



# SECTION 5: ACCESSORIES

## G7895—Citrus Degreaser

This citrus based degreaser is perfect for cleaning cosmoline off of new equipment. It also works for cleaning auto parts, tools, concrete, and porcelain surfaces. Natural, safe for the environment, and contains no CFC's.



Figure 12. G7895 Citrus Degreaser.

## H2499—Small Half-Mask Respirator

## H3631—Medium Half-Mask Respirator

## H3632—Large Half-Mask Respirator

## H3635—Disposable Cartridge Filter Pair P100

Wood dust is now considered a known carcinogen and has been linked to nasal cancer and severe respiratory illnesses. If you work around dust everyday, a half-mask respirator can be a lifesaver. Also compatible with safety glasses!



Figure 13. Half-mask respirator and filters.

## T20501—Face Shield, 4" Crown, Clear

## T20502—Face Shield, 7" Crown, Clear

## T20448—Economy Clear Safety Glasses

## T20452—"Kirova" Anti-Reflective Glasses

## T20456—"Dakura" Clear Safety Glasses

## H0736—Shop Fox® Safety Glasses

These glasses meet ANSI Z87.1-2003 specifications. Buy extras for visitors or employees. You can't be too careful with shop safety!

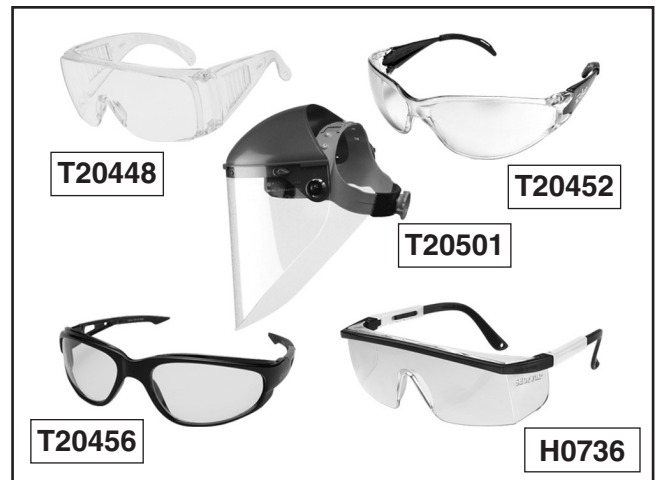


Figure 14. Our most popular safety glasses.

## H4978—Deluxe Earmuffs - 27dB

## H4979—Deluxe Twin Cup Hearing Protector

## H4977—Work-Tunes Radio Headset Earmuffs

Protect yourself with a comfortable pair of cushioned earmuffs. Especially important if you operate machines for hours at a time.



Figure 15. Our most popular earmuffs.

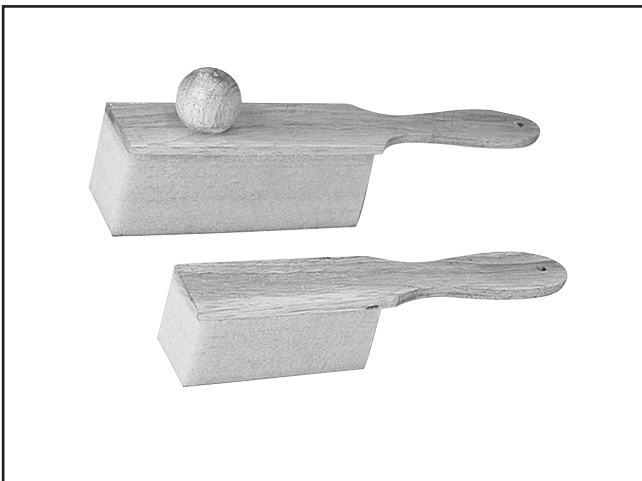
**PRO-STICK® Abrasive Surface Cleaners**

Extend the life of your sanding discs and sleeves! Choose the Pro-Stick® with a handle for greater control or without a handle for more usable area.

<u>Size</u>	<u>Model</u>
1½" X 1½" X 8½" .....	G1511
2" X 2" X 12" .....	G1512
1½" X 1½" X 9" with Handle.....	G2519
2" X 2" X 11" with Handle .....	G2520



**Figure 16.** PRO-STICK® abrasive cleaners.



**Figure 17.** PRO-STICK® cleaners with handles.

**Serrated Hard Rubber Sanding Drums**

If you are looking for crisp edges and a flat surface, these drums will do the job.

<u>Size</u>	<u>Model</u>
2" X 6" X 1" .....	H6017
3" X 6" X 1" .....	H6018
3½" X 6" X 1" .....	H6019
4" X 6" X 1" .....	H6020



**Figure 18.** Serrated hard rubber sanding drums.

**Sponge Sanding Drums**

When your original drums wear out, replace them with the medium drums, or use the hard drums for a crisper edge.

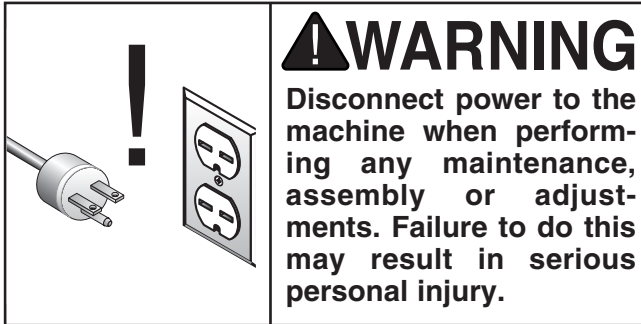
<u>Size</u>	<u>Model</u>
Hard—2" X 6" X 1" .....	H5858
Hard—3" X 6" X 1" .....	H5857
Hard—4" X 6" X 1" .....	H5856
Medium—2" X 6" X 1" .....	H5861
Medium—3" X 6" X 1" .....	H5860
Medium—4" X 6" X 1" .....	H5859



**Figure 19.** Sponge sanding drums.

# SECTION 6: MAINTENANCE

---



## General

---

Regular periodic maintenance of your Model G0565 will ensure optimum performance. Inspect your machine each time you use it. Check for the following conditions and repair or replace when necessary:

1. Loose mounting bolts.
2. Worn switch.
3. Worn or damaged cords and plugs.
4. Damaged or worn sanding belt.
5. Other conditions that could hamper the safe operation of this machine.



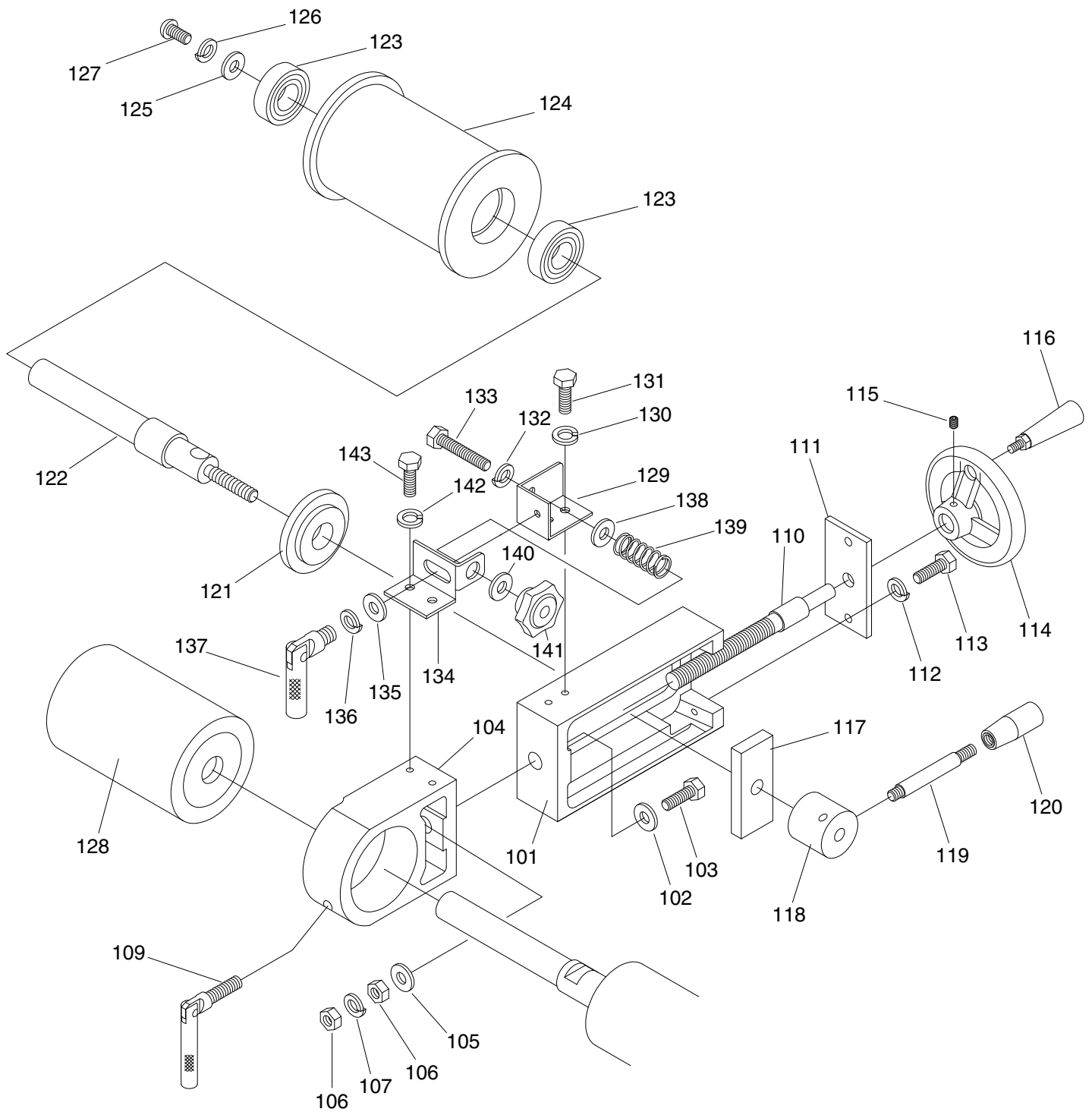
## Cleaning

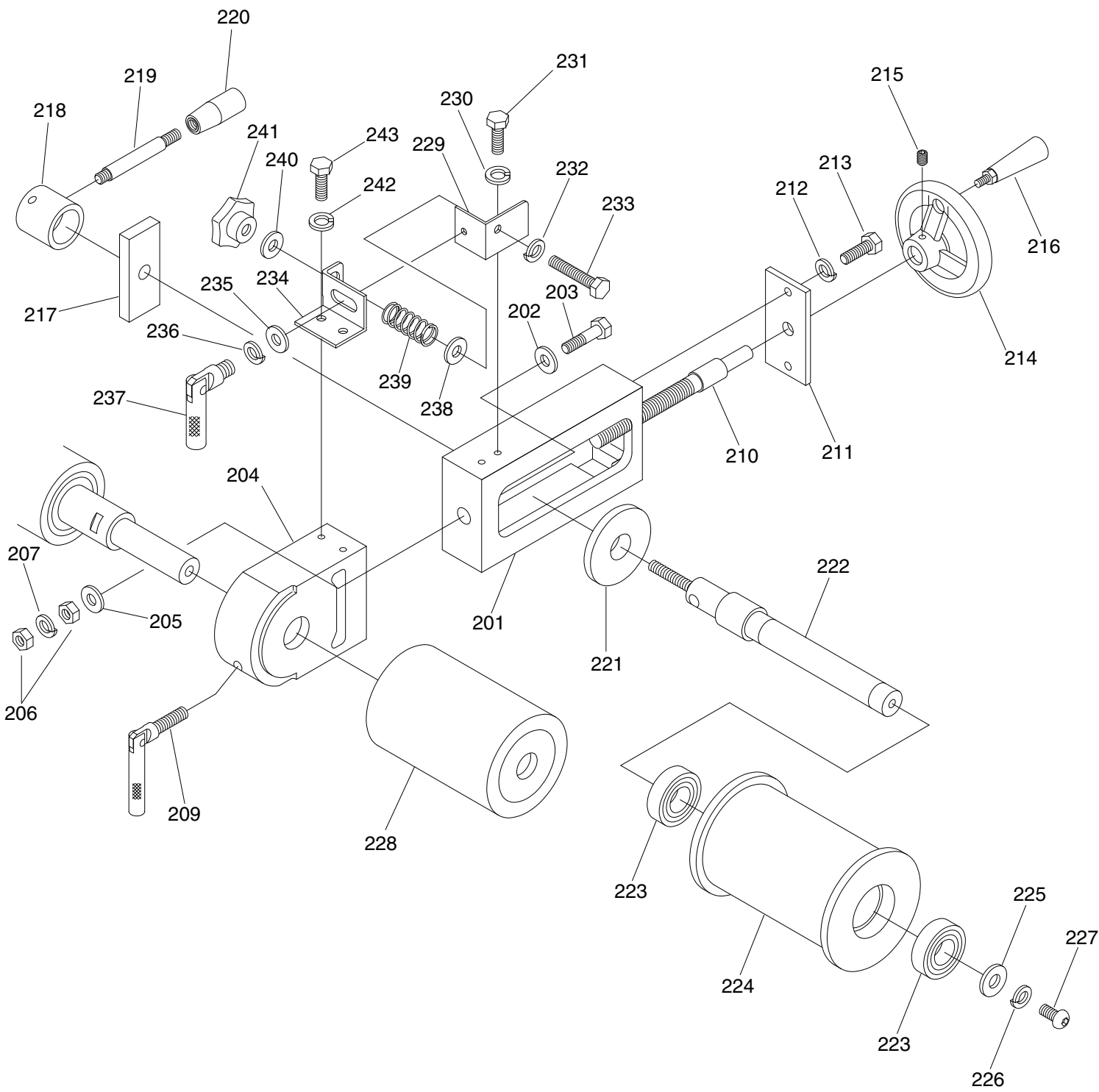
---

Cleaning the Model G0565 is relatively easy. Vacuum up excess sawdust, and wipe off the remaining dust with a dry cloth. Keep bare metal surfaces rust-free with products like, G96® Gun Treatment or Boeshield® T-9.











# G0565 Parts List

REF PART #	DESCRIPTION
1	P0565001 STAND
2	P0565002 LATCH
3	P0565003 RUBBER FOOT 3/8-16
4	PW02 FLAT WASHER 3/8
5	PLW04 LOCK WASHER 3/8
6	PN08 HEX NUT 3/8-16
7	P0565007 MOTOR 1 HP 220V
8	PB73M HEX BOLT M10-1.5 X 50
9	PW04M FLAT WASHER 10MM
10	PLW06M LOCK WASHER 10MM
11	PN02M HEX NUT M10-1.5
12	P0565012 ON/OFF SWITCH
12-1	P0565012-1 SWITCH COVER PLATE
13	PS56M PHLP HD SCR M4-.7 X 16
14	P0565014 SPACER
15	P0565015 HEX NUT 1-12 UNF
17	PLW04 LOCK WASHER 3/8
18	P0565018 SHAFT
19	PN06 HEX NUT 1/2-12
20	PW01 FLAT WASHER 1/2
21	P0565021 DUST HOOD
22	P0565022 HEX NUT 1-12 (LH)
23	P0565023 MACHINE ID LABEL
24	PLABEL-32 DUST MASK LABEL
25	PLABEL-11 SAFETY GLASSES LABEL
26	PLABEL-14 ELECTRICITY LABEL
27	P0565027 ROTATION DIRECTION LABEL
28	P0565028 TIGHT/LOOSE LABEL

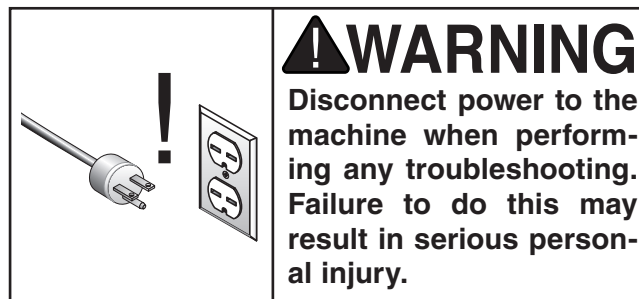
REF PART #	DESCRIPTION
29	P0565029 LOGO PLATE
101	P0565101 ADJUSTMENT BLOCK (L)
102	PW01M FLAT WASHER 8MM
103	PB30M HEX BOLT M8-1.25 X 55
104	P0565104 ROTATION COLLAR (L)
105	PW01M FLAT WASHER 8MM
106	PN03M HEX NUT M8-1.25
107	PLW04M LOCK WASHER 8MM
109	P0565109 LOCK HANDLE 3/8
110	P0565110 ADJUSTMENT SCREW 5/8 (L)
111	P0565111 SUPPORTING PLATE
112	PLW03M LOCK WASHER 6MM
113	PB83M HEX BOLT M6-1.0 X 16
114	P0565114 HANDWHEEL
115	PSS16M SET SCREW M8-1.25 X 10
116	P0565116 HANDLE M8-1.25
117	P0565117 LOCK PLATE
118	P0565118 SPECIAL NUT
119	P0565119 HAND LEVER 3/8-16 X 95
120	P0565120 HANDLE 3/8-16
121	P0565121 FLANGE
122	P0565122 SHAFT (L)
123	P6205 BALL BEARING 6205
124	P0565124 ALUMINUM DRUM
125	PW04M FLAT WASHER 10MM
126	PLW06M LOCK WASHER 10MM
127	P0565127 BTN HD CAP SCR M10-1.5 X 20
128	P0565128 SPONGE DRUM 4 X 6 X 1 (H)

REF PART #	DESCRIPTION
129	P0565129 BRACKET (L)
130	PLW03M LOCK WASHER 6MM
131	PB02M HEX BOLT M6-1.0 X 12
132	PLW04 LOCK WASHER 3/8
133	PB60 HEX BOLT 3/8-16 X 3
134	P0565134 BRACKET (L)
135	PW02 FLAT WASHER 3/8
136	PLW04 LOCK WASHER 3/8
137	P0565137 LOCK HANDLE 3/8 X 12
138	PW02 FLAT WASHER 3/8
139	P0565139 SPRING 2.0 X 67MM
140	PW02 FLAT WASHER 3/8
141	P0565141 STAR KNOB 3/8-16 (FEMALE)
142	PLW03M LOCK WASHER 6MM
143	PB02M HEX BOLT M6-1.0 X 12
201	P0565201 ADJUSTMENT BLOCK (R)
202	PW01M FLAT WASHER 8MM
203	PB30M HEX BOLT M8-1.25 X 55
204	P0565204 ROTATION COLLAR (R)
205	PW01M FLAT WASHER 8MM
206	PN03M HEX NUT M8-1.25
207	PLW04M LOCK WASHER 8MM
209	P0565109 LOCK HANDLE 3/8
210	P0565210 ADJUSTMENT SCREW 5/8 (R)
211	P0565111 SUPPORTING PLATE
212	PLW03M LOCK WASHER 6MM
213	PB83M HEX BOLT M6-1.0 X 16
214	P0565114 HANDWHEEL
215	PSS16M SET SCREW M8-1.25 X 10

REF PART #	DESCRIPTION
216	P0565116 HANDLE M8-1.25
217	P0565117 LOCK PLATE
218	P0565118 SPECIAL NUT
219	P0565119 HAND LEVER 3/8-16 X 95
220	P0565120 HANDLE 3/8-16
221	P0565121 FLANGE
222	P0565222 SHAFT (R)
223	P6205 BALL BEARING 6205
224	P0565124 ALUMINUM DRUM
225	PW04M FLAT WASHER 10MM
226	PLW06M LOCK WASHER 10MM
227	P0565227 BTN HD CAP SCR M10-1.5 X 20
228	P0565128 SPONGE DRUM 4 X 6 X 1 (H)
229	P0565229 BRACKET (R)
230	PLW03M LOCK WASHER 6MM
231	PB02M HEX BOLT M6-1.0 X 12
232	PLW04 LOCK WASHER 3/8
233	PB60 HEX BOLT 3/8-16 X 3
234	P0565234 BRACKET (R)
235	PW02 FLAT WASHER 3/8
236	PLW04 LOCK WASHER 3/8
237	P0565137 LOCK HANDLE 3/8 X 12
238	PW02 FLAT WASHER 3/8
239	P0565139 SPRING 2.0 X 67MM
240	PW02 FLAT WASHER 3/8
241	P0565141 STAR KNOB 3/8-16 (FEMALE)
242	PLW03M LOCK WASHER 6MM
243	PB02M HEX BOLT M6-1.0 X 12

# Troubleshooting

Symptom	Possible Cause	Possible Solution
Motor will not start.	<ol style="list-style-type: none"> <li>1. Low voltage.</li> <li>2. Open circuit in motor or loose connections.</li> </ol>	<ol style="list-style-type: none"> <li>1. Check power line for proper voltage.</li> <li>2. Inspect all lead connections on motor for loose or open connections.</li> </ol>
Motor will not start; fuses or circuit breakers blow.	<ol style="list-style-type: none"> <li>1. Short circuit in line cord or plug.</li> </ol>	<ol style="list-style-type: none"> <li>1. Repair or replace cord or plug for damaged insulation and shorted wires.</li> </ol>
Motor fails to develop full power (output of motor decreases rapidly with decrease in voltage at motor terminals).	<ol style="list-style-type: none"> <li>1. Power line overloaded with lights, appliances, and other motors.</li> <li>2. Undersized wires or circuits too long.</li> <li>3. General overloading of power company facilities.</li> </ol>	<ol style="list-style-type: none"> <li>1. Reduce load on power line.</li> <li>2. Increase wire sizes or reduce length of the circuit.</li> <li>3. Request a power check from the power company.</li> </ol>
Motor overheats.	<ol style="list-style-type: none"> <li>1. Motor overloaded.</li> <li>2. Air circulation through the motor restricted.</li> </ol>	<ol style="list-style-type: none"> <li>1. Reduce load on motor.</li> <li>2. Clean out motor to provide normal air circulation.</li> </ol>
Motor stalls (resulting in blown fuses or tripped circuit).	<ol style="list-style-type: none"> <li>1. Short circuit in motor or loose connections.</li> <li>2. Low voltage.</li> <li>3. Incorrect fuses or circuit breakers in power line.</li> <li>4. Motor overloaded.</li> </ol>	<ol style="list-style-type: none"> <li>1. Repair or replace connections on motor for loose or shorted terminals or worn insulation.</li> <li>2. Correct the low voltage conditions.</li> <li>3. Install correct fuses or circuit breakers.</li> <li>4. Reduce load on motor.</li> </ol>
Vibration when running or cutting.	<ol style="list-style-type: none"> <li>1. Loose or damaged sanding belt or sponge drum.</li> <li>2. Worn arbor bearings.</li> <li>3. Damaged arbor shaft.</li> </ol>	<ol style="list-style-type: none"> <li>1. Tighten or replace sanding belt or sponge drum.</li> <li>2. Check/replace arbor bearings.</li> <li>3. Replace the arbor shaft.</li> </ol>



# Warranty and Returns

---

Grizzly Industrial, Inc. warrants every product it sells for a period of **1 year** to the original purchaser from the date of purchase. This warranty does not apply to defects due directly or indirectly to misuse, abuse, negligence, accidents, repairs or alterations or lack of maintenance. This is Grizzly's sole written warranty and any and all warranties that may be implied by law, including any merchantability or fitness, for any particular purpose, are hereby limited to the duration of this written warranty. We do not warrant or represent that the merchandise complies with the provisions of any law or acts unless the manufacturer so warrants. In no event shall Grizzly's liability under this warranty exceed the purchase price paid for the product and any legal actions brought against Grizzly shall be tried in the State of Washington, County of Whatcom.

We shall in no event be liable for death, injuries to persons or property or for incidental, contingent, special, or consequential damages arising from the use of our products.

To take advantage of this warranty, contact us by mail or phone and give us all the details. We will then issue you a "Return Number," which must be clearly posted on the outside as well as the inside of the carton. We will not accept any item back without this number. Proof of purchase must accompany the merchandise.

The manufacturers reserve the right to change specifications at any time because they constantly strive to achieve better quality equipment. We make every effort to ensure that our products meet high quality and durability standards and we hope you never need to use this warranty.

Please feel free to write or call us if you have any questions about the machine or the manual.

Thank you again for your business and continued support. We hope to serve you again soon.

# WARRANTY CARD

Name \_\_\_\_\_

Street \_\_\_\_\_

City \_\_\_\_\_ State \_\_\_\_\_ Zip \_\_\_\_\_

Phone Number \_\_\_\_\_ E-Mail \_\_\_\_\_ FAX \_\_\_\_\_

MODEL: **G0565 Adjustable Sponge Sander** Serial # \_\_\_\_\_ Order \_\_\_\_\_

The following information is given on a voluntary basis. It will be used for marketing purposes to help us develop better products and services.

Of course, all information is strictly confidential.

CUT ALONG DOTTED LINE

- How did you learn about us?  
 Advertisement  Friend  
 Catalog  Card Deck  
 World Wide Web  
 Other \_\_\_\_\_
- Which of the following magazines do you subscribe to.  
 Practical Homeowner  Cabinetmaker  
 Shop Notes  Family Handyman  
 Today's Homeowner  Fine Homebuilding  
 WOOD  Wooden Boat  
 Home Handyman  Woodshop News  
 Journal of Light Construction  Woodsmith  
 Old House Journal  Woodwork  
 Popular Mechanics  Woodworker  
 Popular Science  Woodworker's Journal  
 Popular Woodworking  Workbench  
 Other \_\_\_\_\_
- Which of the following woodworking/remodeling shows do you watch?  
 Backyard America  The New Yankee Workshop  
 Home Time  This Old House  
 The American Woodworker  Woodwright's Shop  
 Other \_\_\_\_\_
- What is your annual household income?  
 \$20,000-\$29,999  \$60,000-\$69,999  
 \$30,000-\$39,999  \$70,000-\$79,999  
 \$40,000-\$49,999  \$80,000-\$89,999  
 \$50,000-\$59,999  \$90,000 +
- What is your age group?  
 20-29  50-59  
 30-39  60-69  
 40-49  70 +
- How long have you been a woodworker?  
 0 - 2 Years  8 - 20 Years  
 2 - 8 Years  20+ Years
- How would you rank your woodworking skills?  
 Simple  Advanced  
 Intermediate  Master Craftsman
- What stationary woodworking tools do you own? Check all that apply.  
 Air Compressor  Panel Saw  
 Band Saw  Planer  
 Drill Press  Power Feeder  
 Drum Sander  Radial Arm Saw  
 Dust Collector  Shaper  
 Horizontal Boring Machine  Spindle Sander  
 Jointer  Table Saw  
 Lathe  Vacuum Veneer Press  
 Mortiser  Wide Belt Sander  
 Other \_\_\_\_\_
- How many of your woodworking machines are Grizzly? \_\_\_\_\_
- Which benchtop tools do you own? Check all that apply.  
 1" x 42" Belt Sander  6" - 8" Grinder  
 5" - 8" Drill Press  Mini Lathe  
 8" Table Saw  10" - 12" Thickness Planer  
 8" - 10" Bandsaw  Scroll Saw  
 Disc/Belt Sander  Spindle/Belt Sander  
 Mini Jointer  
 Other \_\_\_\_\_
- How many of the machines checked above are Grizzly? \_\_\_\_\_
- Which portable/hand held power tools do you own?  
\_\_\_\_\_  
\_\_\_\_\_  
\_\_\_\_\_
- What machines/supplies would you like Grizzly Industrial to carry?  
\_\_\_\_\_  
\_\_\_\_\_  
\_\_\_\_\_
- What new accessories would you like Grizzly Industrial to carry?  
 Builders Hardware  Hand Tools  
 Fasteners  Wood Components  
 Other \_\_\_\_\_
- What other companies do you purchase your tools and supplies from?  
\_\_\_\_\_  
\_\_\_\_\_  
\_\_\_\_\_
- Do you think your purchase is good value?  
 Yes  No
- Would you recommend Grizzly Industrial to a friend?  
 Yes  No
- Would you allow us to use your name as a reference for Grizzly customers in your area? **Note: We never use names more than three times.**  
 Yes  No
- Comments: \_\_\_\_\_  
\_\_\_\_\_  
\_\_\_\_\_  
\_\_\_\_\_  
\_\_\_\_\_  
\_\_\_\_\_  
\_\_\_\_\_

FOLD ALONG DOTTED LINE

\_\_\_\_\_  
\_\_\_\_\_  
\_\_\_\_\_



Place  
Stamp  
Here



**GRIZZLY INDUSTRIAL, INC.**  
**P.O. BOX 2069**  
**BELLINGHAM, WA 98227-2069**



FOLD ALONG DOTTED LINE

Send a Grizzly Catalog to a friend:

Name \_\_\_\_\_  
Street \_\_\_\_\_  
City \_\_\_\_\_ State \_\_\_\_\_ Zip \_\_\_\_\_

TAPE ALONG EDGES--PLEASE DO NOT STAPLE



# *grizzly.com*

**TOOL WEBSITE**

Buy Direct and Save with Grizzly® – Trusted, Proven and a Great Value!

*Visit Our Website Today And Discover Why  
Grizzly® Is The Industry Leader!*

- SECURE ORDERING
- ORDERS SHIPPED WITHIN 24 HOURS
- E-MAIL RESPONSE WITHIN ONE HOUR

-OR-

Call Today For A **FREE**  
Full Color Catalog

**1-800-523-4777**





## Free Manuals Download Website

<http://myh66.com>

<http://usermanuals.us>

<http://www.somanuals.com>

<http://www.4manuals.cc>

<http://www.manual-lib.com>

<http://www.404manual.com>

<http://www.luxmanual.com>

<http://aubethermostatmanual.com>

Golf course search by state

<http://golfingnear.com>

Email search by domain

<http://emailbydomain.com>

Auto manuals search

<http://auto.somanuals.com>

TV manuals search

<http://tv.somanuals.com>