



MODEL H6191 INDUSTRIAL AIR SCREWDRIVER INSTRUCTION SHEET

⚠ WARNING	
	EYE/EAR INJURY HAZARD! Wear safety glasses and hearing protection during use of this tool!
	INJURY HAZARD! Always disconnect tool from air to prevent unexpected operation during service!
	DO NOT exceed 90 PSI air pressure! Personal injury or damage to tool could occur.



Figure 1. Model H6191.

Introduction

This Industrial Air Screwdriver features 8,500 RPM free speed, forward and reverse directions, 10–60 in/lbs adjustable torque, 90 PSI, 4 CFM average air consumption, 1/4" NPT air inlet and includes a single double ended No. 2 Phillips head driver and male quick connect fitting.

Inventory

- A. Industrial Air Screwdriver 1
- B. 1/4" NPT Air Fitting..... 1
- C. Phillips Head Driver..... 1
- D. Hanger..... 1

Operation

Screw the 1/4" NPT Air Fitting on the air inlet of the screwdriver. Push the Phillips head driver into the socket to lock in place. Twist the adjustment dial to set the torque to your desired setting.

This Industrial Air Screwdriver **MUST** have 3-4 drops of oil directly dropped into the air fitting before each use as shown in **Figure 2**.

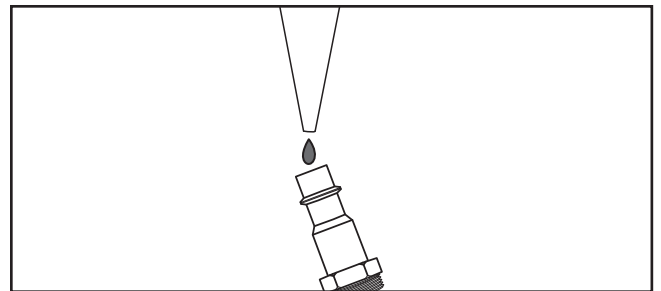
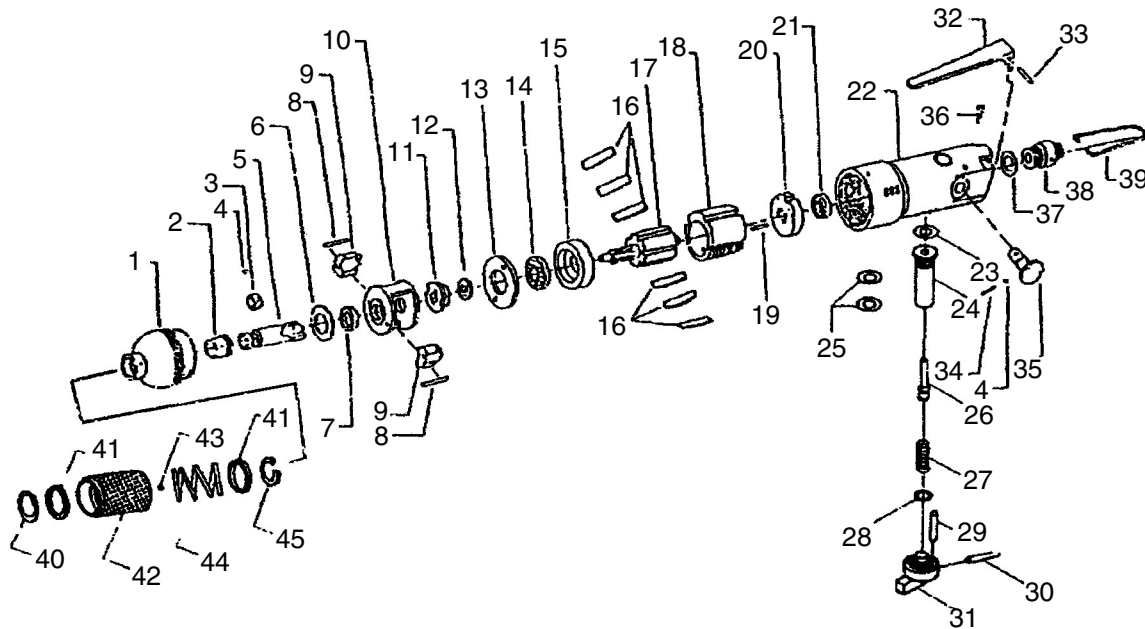


Figure 2. Lubricating directly into air fitting.

If you need help with your new pneumatic tool, call our Tech Support at: (570) 546-9663.

COPYRIGHT © JULY, 2006 BY GRIZZLY INDUSTRIAL, INC.
WARNING: NO PORTION OF THIS MANUAL MAY BE REPRODUCED IN ANY SHAPE OR FORM WITHOUT THE WRITTEN APPROVAL OF GRIZZLY INDUSTRIAL, INC.
 #PC8462 PRINTED IN TAIWAN

H6191 Parts Breakdown and List



REF	PART #	DESCRIPTION
1	PH6191001	FRONT HOUSING
2	PH6191002	BUSHING
3	PH6191003	STEEL BALL COLLAR
4	PH6191004	STEEL BALL
5	PH6191005	ANVIL
6	PH6191006	THRUST WASHER
7	PH6191007	COLLAR
8	PH6191008	PIN
9	PH6191009	HAMMER DOG
10	PH6191010	HAMMER SEAT
11	PH6191011	CAM
12	PH6191012	WASHER
13	PH6191013	TOP ADJUSTER
14	PH6191014	BALL BEARING
15	PH6191015	FRONT PLATE
16	PH6191016	ROTOR BLADE
17	PH6191017	ROTOR
18	PH6191018	CYLINDER
19	PH6191019	PIN
20	PH6191020	REAR END PLATE
21	PH6191021	BALL BEARING
22	PH6191022	HOUSING
23	PH6191023	O-RING
24	PH6191024	BUSHING

REF	PART #	DESCRIPTION
25	PH6191025	O-RING
26	PH6191026	VALVE STEM
27	PH6191027	COMPRESSION SPRING
28	PH6191028	O-RING
29	PH6191029	PIN
30	PH6191030	PIN
31	PH6191031	REVERSE VALVE
32	PH6191032	SWITCH LEVER
33	PH6191033	PIN
34	PH6191034	SPRING
35	PH6191035	AIR REGULATOR
36	PH6191036	SCREW
37	PH6191037	WASHER
38	PH6191038	AIR INLET
39	PH6191039	HOOK
40	PH6191040	RETAINER
41	PH6191041	WASHER
42	PH6191042	BALL RETAINER
43	PH6191043	STEEL BALL
44	PH6191044	COMPRESSION SPRING
45	PH6191045	RETAINER WASHER
46	PH6191046	1/4" NPT AIR FITTING*
47	PH6191047	PHILLIPS HEAD DRIVER #2*

* NOT SHOWN IN PARTS BREAKDOWN DRAWING

Free Manuals Download Website

<http://myh66.com>

<http://usermanuals.us>

<http://www.somanuals.com>

<http://www.4manuals.cc>

<http://www.manual-lib.com>

<http://www.404manual.com>

<http://www.luxmanual.com>

<http://aubethermostatmanual.com>

Golf course search by state

<http://golfingnear.com>

Email search by domain

<http://emailbydomain.com>

Auto manuals search

<http://auto.somanuals.com>

TV manuals search

<http://tv.somanuals.com>