

Grizzly

Industrial, Inc.®

ACOUSTIC AMPLIFIER

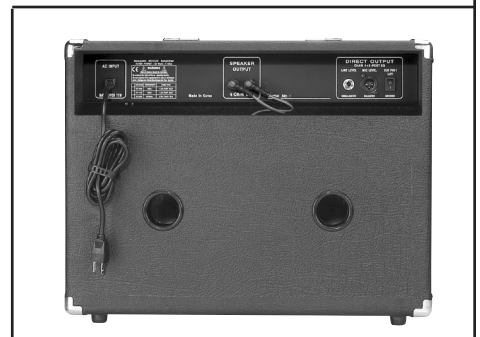
MODEL H5526

INSTRUCTION SHEET



Features:

- 30 Watt Amp
- (2) 8" Woofer/Compression Bullet Tweeters
- Protective Metal Speaker Grille
- 2 Channel w/Separate Volume/Effects
- (2) XLR and (2) 1/4" Inputs
- Master 3 Band EQ w/Sweepable Mids
- **ALESIS™** Digital Effects w/15 Presets
- Master Volume
- XLR Direct Out w/Ground Lift
- Phantom Power



COPYRIGHT © OCTOBER, 2003 BY GRIZZLY INDUSTRIAL, INC.

WARNING: NO PORTION OF THIS MANUAL MAY BE REPRODUCED IN ANY SHAPE OR FORM WITHOUT THE WRITTEN APPROVAL OF GRIZZLY INDUSTRIAL, INC.

#5579 PRINTED IN KOREA

ONLINE MANUAL DISCLAIMER

THE INFORMATION IN THIS MANUAL REPRESENTS THE CONFIGURATION OF THE MACHINE AS IT IS CURRENTLY BEING SHIPPED. THE MACHINE CONFIGURATION CAN CHANGE AS PRODUCT IMPROVEMENTS ARE INCORPORATED. IF YOU OWN AN EARLIER VERSION OF THE MACHINE, THIS MANUAL MAY NOT EXACTLY DEPICT YOUR MACHINE. CONTACT CUSTOMER SERVICE IF YOU HAVE ANY QUESTIONS ABOUT DIFFERENCES. PREVIOUS VERSIONS ARE NOT AVAILABLE ONLINE.

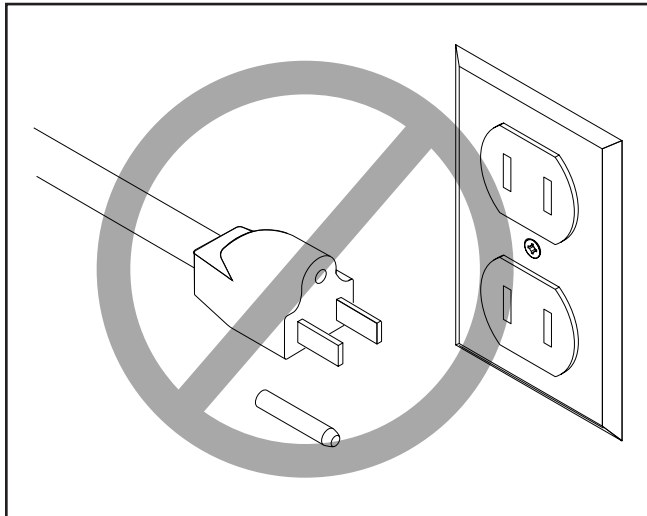


- **CH.1~2 BALANCED** - Connect a low impedance microphone cable here for vocals.
- **CH.1~2 UNBALANCED** - 1/4" input for use with any instrument level input source. The circuitry is designed to provide the best response from all current instrument pick-ups. The great tone of this acoustic amp starts here.
- **CH. 1 VOLUME & EFFECTS LEVEL** - Adjusts the amount of signal from the Ch.1 input.
- **CH. 2 VOLUME & EFFECTS LEVEL** - Adjusts the amount of signal from the Ch.2 input.
- **MASTER ACTIVE EQUALIZATION** - This 3 band EQ features Low and High frequency shelving EQ filters along with sweepable midfrequency network switch is adjustable to help reduce feedback. This EQ controls all inputs of the H5526. The midrange gain control, when turned toward "—" direction, operates as a variable frequency notch filter.
- **ALESIS™ DIGITAL EFFECTS** - This state-of-the-art DSP utilizes 24-Bit technology for its processing and D/A-A/D conversion. Effects include : 3-Plate Reverbs, 3-Room Reverbs, 2-Hall Reverbs, 1-Rotary-speaker, 1-Chorus/Room, 1-Chorus/Plate, 1-Chorus, 1-Flange, 2-Delays and 1-Bypass.
- **EFFECTS LEVEL CONTROL** - This controls the amount of effects returned back from the on-board DSP.
- **MASTER VOLUME** - The master volume control adjusts the overall volume of the amplifier.
- **POWER LED** - The power LED is illuminated when the power is on.
- **POWER SWITCH** - Turns AC power on or off.

REAR PANEL

- **DIRECT OUTPUT** - The H5526 is equipped with an XLR balanced direct output and an unbalanced 1/4" line level output. Both the XLR balanced and 1/4" unbalanced outputs make "real world sense" when connecting with other equipment. Both outputs are post master volume / post EQ / post effects to aid in sending a "finished" mixed signal to a PA system or the external power amplifier.

Caring For Your Amplifier



⚠ CAUTION

SHOCK HAZARD! The amplifier must have a ground prong in the plug to help ensure that it is grounded. **DO NOT** remove this prong to fit the plug into a two-pronged outlet!

- This amplifier is supplied with a three-pronged 110 volt power cord, which includes a grounding prong to reduce shock hazards. **DO NOT** remove the grounding prong to fit the plug into a two-pronged outlet!
- Only plug the amplifier into a grounded 110 volt outlet!
- To keep the amplifier working properly, **DO NOT** expose it to rain or moisture.
- **DO NOT** pull or lift the amplifier by the power cord.
- **UNPLUG** the amplifier before cleaning, and only clean with a damp cloth (no chemicals).

Customer Service

We have excellent regional service departments at your disposal should the need arise.

If you have any service questions or parts requests, please call or write to us at the location listed below.

Grizzly Industrial, Inc
1203 Lycoming Mall Circle
Muncy, PA 17756
Phone:(570) 546-9663
Fax:(800) 438-5901
E-Mail: techsupport@grizzly.com
Web Site: <http://www.grizzly.com>

The specifications, drawings, and photographs illustrated in this manual represent the Model H5526 as supplied when the manual was prepared. However, owing to Grizzly's policy of continuous improvement, changes may be made at any time with no obligation on the part of Grizzly. For your convenience, we always keep current Grizzly manuals available on our website at www.grizzly.com. Any updates to your amplifier will be reflected in these manuals as soon as they are complete.

grizzly.com **WEBSITE**

Buy Direct and Save with Grizzly® – Trusted, Proven and a Great Value!

*Visit Our Website Today And Discover Why
Grizzly® Is The Industry Leader!*

- SECURE ORDERING
- ORDERS SHIPPED WITHIN 24 HOURS
- E-MAIL RESPONSE WITHIN ONE HOUR

-OR-

Call Today For A **FREE**
Full Color Catalog

1-800-523-4777



Free Manuals Download Website

<http://myh66.com>

<http://usermanuals.us>

<http://www.somanuals.com>

<http://www.4manuals.cc>

<http://www.manual-lib.com>

<http://www.404manual.com>

<http://www.luxmanual.com>

<http://aubethermostatmanual.com>

Golf course search by state

<http://golfingnear.com>

Email search by domain

<http://emailbydomain.com>

Auto manuals search

<http://auto.somanuals.com>

TV manuals search

<http://tv.somanuals.com>