

Grizzly

Industrial, Inc.®

GUITAR AMPLIFIER

MODEL H5525

INSTRUCTION SHEET



Features:

- 30 Watt Amp
- **ALESIS™** Digital Effects
- 3 Band Active EQ
- Effects Loop
- 10" Loudspeaker
- Headphone Jack
- Protective Metal Speaker Grille



COPYRIGHT © OCTOBER, 2003 BY GRIZZLY INDUSTRIAL, INC.
**WARNING: NO PORTION OF THIS MANUAL MAY BE REPRODUCED IN ANY SHAPE
OR FORM WITHOUT THE WRITTEN APPROVAL OF GRIZZLY INDUSTRIAL, INC.**
#5578 PRINTED IN KOREA

ONLINE MANUAL DISCLAIMER

THE INFORMATION IN THIS MANUAL REPRESENTS THE CONFIGURATION OF THE MACHINE AS IT IS CURRENTLY BEING SHIPPED. THE MACHINE CONFIGURATION CAN CHANGE AS PRODUCT IMPROVEMENTS ARE INCORPORATED. IF YOU OWN AN EARLIER VERSION OF THE MACHINE, THIS MANUAL MAY NOT EXACTLY DEPICT YOUR MACHINE. CONTACT CUSTOMER SERVICE IF YOU HAVE ANY QUESTIONS ABOUT DIFFERENCES. PREVIOUS VERSIONS ARE NOT AVAILABLE ONLINE.

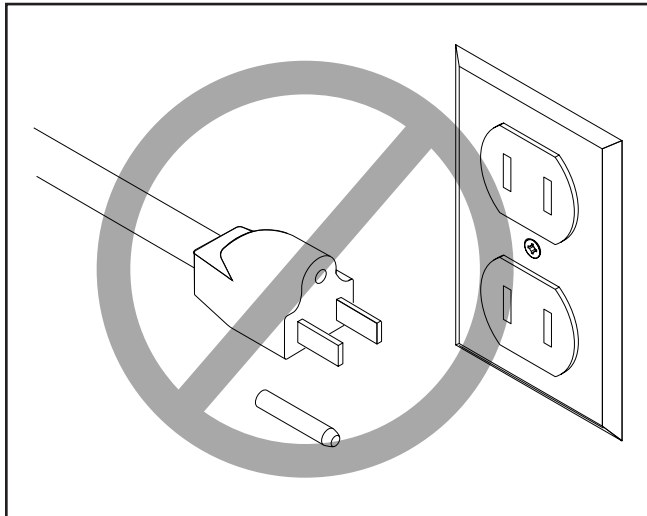


- **HIGH/LOW INPUT** - Connect your guitar here with a shielded instrument cable.
- **CLEAN GAIN** - This control adjusts the overall loudness of the clean channel.
- **CHANNEL SWITCH** - This switch allows you to select Clean / Overdrive channel.
- **OVERDRIVE GAIN** - Adjusts the amount of overdrive gain in the overdrive channel.
- **OVERDRIVE VOLUME** - Adjusts the overall loudness of the overdrive channel.
- **MASTER 3 BAND EQUALIZATION** -
The H5525's main equalization is a wide range 3-band active equalization network. A "flat" setting is obtained with the controls at the 12 o'clock position.
- **ALESIS™ DIGITAL EFFECTS** -
This state-of-the-art DSP utilizes 24-Bit technology for its processing and D/A-A/D conversion. Effects include : 3-Plate Reverbs, 3-Room Reverbs, 2-Hall Reverbs, 1-Rotary-speaker, 1-Chorus/Room, 1-Chorus/Plate, 1-Chorus, 1-Flange, 2-Delays and 1-Bypass.
- **EFFECTS LEVEL CONTROL** -
This controls the amount of effects returned back from the on-board DSP. This does not control any out-board effects patched into the effects loop.
- **HEADPHONE JACK** - Plug in your headphones here.
- **POWER LED** - The power LED is illuminated blue when the power is on.
- **POWER SWITCH** - Turns AC power on or off.

REAR PANEL

- **EFFECTS LOOP RETURN** - Connect a shielded cable from the output jack of the external effects unit to this jack.
- **EFFECTS LOOP SEND** - Connect a shielded cable from this jack into the input jack of the effects unit.
- **CHANNEL FOOT SWITCH JACK** - Connect a one-button foot switch here for remote on/off control of the Clean / Overdrive channel.
- **EFFECTS FOOT SWITCH JACK** - Connect a one-button foot switch here for remote on/off control of the DSP section.

Caring For Your Amplifier



⚠ CAUTION

SHOCK HAZARD! The amplifier must have a ground prong in the plug to help ensure that it is grounded. **DO NOT** remove this prong to fit the plug into a two-pronged outlet!

- This amplifier is supplied with a three-pronged 110 volt power cord, which includes a grounding prong to reduce shock hazards. **DO NOT** remove the grounding prong to fit the plug into a two-pronged outlet!
- Only plug the amplifier into a grounded 110 volt outlet!
- To keep the amplifier working properly, **DO NOT** expose it to rain or moisture.
- **DO NOT** pull or lift the amplifier by the power cord.
- **UNPLUG** the amplifier before cleaning, and only clean with a damp cloth (no chemicals).

Customer Service

We have excellent regional service departments at your disposal should the need arise.

If you have any service questions or parts requests, please call or write to us at the location listed below.

Grizzly Industrial, Inc
1203 Lycoming Mall Circle
Muncy, PA 17756
Phone:(570) 546-9663
Fax:(800) 438-5901
E-Mail: techsupport@grizzly.com
Web Site: <http://www.grizzly.com>

The specifications, drawings, and photographs illustrated in this manual represent the Model H5525 as supplied when the manual was prepared. However, owing to Grizzly's policy of continuous improvement, changes may be made at any time with no obligation on the part of Grizzly. For your convenience, we always keep current Grizzly manuals available on our website at www.grizzly.com. Any updates to your amplifier will be reflected in these manuals as soon as they are complete.

grizzly.com **WEBSITE**

Buy Direct and Save with Grizzly® – Trusted, Proven and a Great Value!

*Visit Our Website Today And Discover Why
Grizzly® Is The Industry Leader!*

- SECURE ORDERING
- ORDERS SHIPPED WITHIN 24 HOURS
- E-MAIL RESPONSE WITHIN ONE HOUR

-OR-

Call Today For A **FREE**
Full Color Catalog

1-800-523-4777



Free Manuals Download Website

<http://myh66.com>

<http://usermanuals.us>

<http://www.somanuals.com>

<http://www.4manuals.cc>

<http://www.manual-lib.com>

<http://www.404manual.com>

<http://www.luxmanual.com>

<http://aubethermostatmanual.com>

Golf course search by state

<http://golfingnear.com>

Email search by domain

<http://emailbydomain.com>

Auto manuals search

<http://auto.somanuals.com>

TV manuals search

<http://tv.somanuals.com>