



MODEL H0583 1" HEAVY-DUTY TWO-HAMMER IMPACT WRENCH INSTRUCTION SHEET

⚠ WARNING	
	EYE/EAR INJURY HAZARD! Wear safety glasses and hearing protection when using this tool!
	INJURY HAZARD! Always disconnect tool from air to prevent unexpected operation during service!
	DO NOT EXCEED 115 PSI! Personal injury could occur.
	SHATTERING HAZARD! Use sockets rated for impact wrench use only.

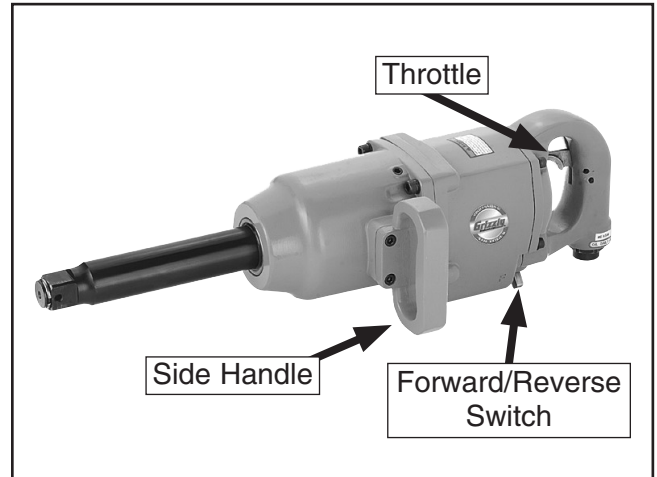


Figure 1. Model H0583

Specifications

Drive Size	1"
Bolt Size Capacity	1 3/4"
No-Load Speed	3,000 RPM
Maximum Torque	1,400 ft/lb
Air Inlet Size	1/2" NPT
Air Consumption	14 CFM
Operating Pressure	90 PSI
Maximum Operating Pressure.....	115 PSI
Weight	28.6 lbs

Inventory

- A. Impact Wrench 1
- B. Side Handle..... 1
- C. Cap Screws..... 4

Setup

Secure the side handle to the impact wrench with the cap screws.

If you need help with your new pneumatic tool, call our Tech Support at: (570) 546-9663.

Operation

Install any 1" drive socket into your air impact wrench. Flip the forward/reverse switch, shown in **Figure 1**, to change direction. Connect to air line regulated at 90 PSI. Using both hands, securely hold onto the impact wrench and squeeze the throttle.

Maintenance

The impact wrench **MUST** be regularly lubricated with 3-4 drops of air tool oil directly into the air fitting before each use. For best results, we recommend using an in line filter, lubricator, and regulator, as shown in **Figure 2**.

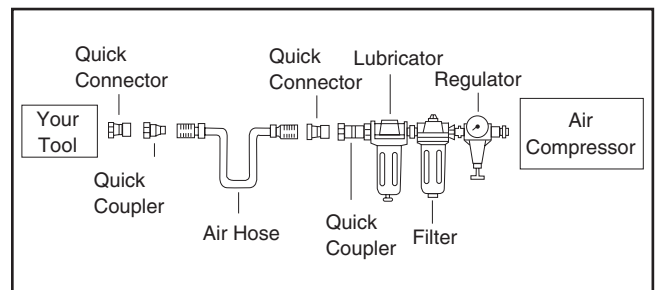


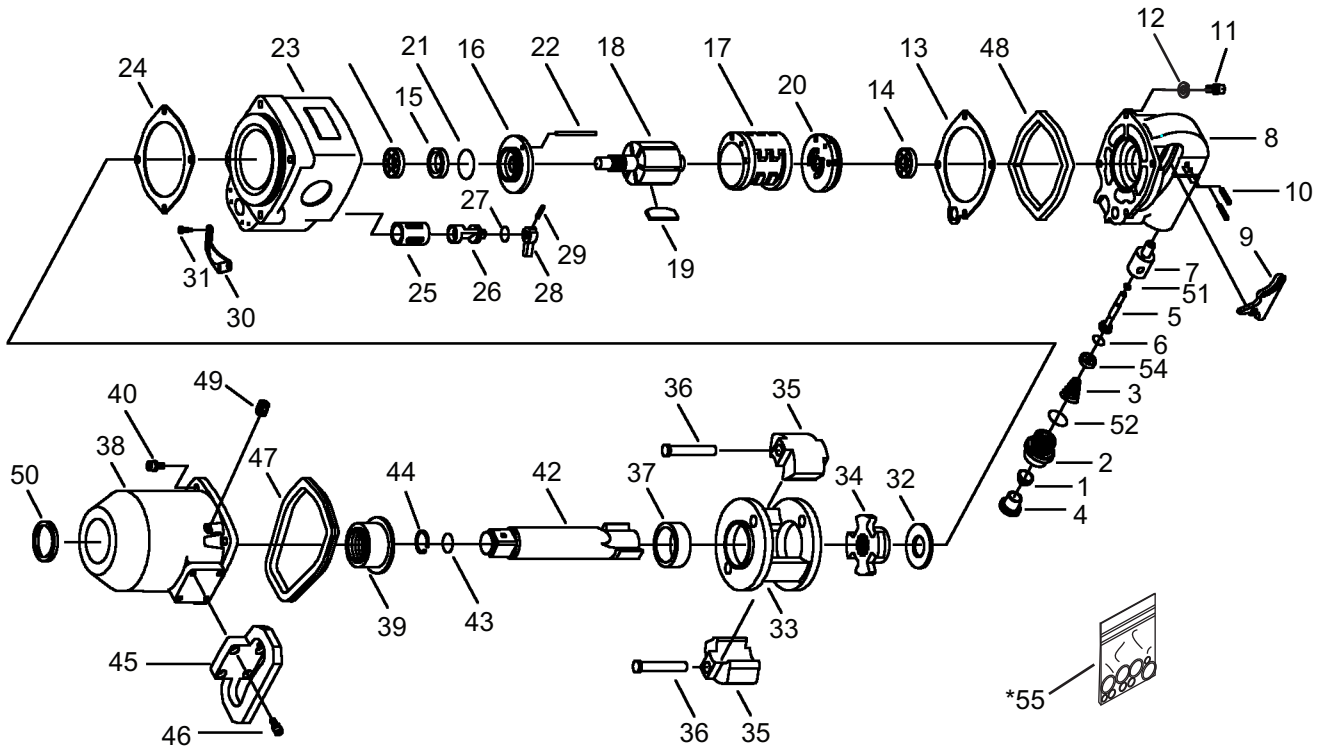
Figure 2. Installing your tool.

COPYRIGHT © MAY, 2008 BY GRIZZLY INDUSTRIAL, INC.

WARNING: NO PORTION OF THIS MANUAL MAY BE REPRODUCED IN ANY SHAPE OR FORM WITHOUT THE WRITTEN APPROVAL OF GRIZZLY INDUSTRIAL, INC.

#JM10694 PRINTED IN TAIWAN

H0583 Parts Breakdown and List



REF	PART #	DESCRIPTION
1	PH0583001	SCREEN
2	PH0583002	AIR INLET 1/2" NPT
3	PH0583003	COMPRESSION SPRING
4	PH0583004	COVER
5	PH0583005	THROTTLE VALVE
6	PH0583006	O-RING
7	PH0583007	RUBBER BUSHING
8	PH0583008	THROTTLE HANDLE
9	PH0583009	TRIGGER
10	PRP05M	ROLL PIN 5 X 30
11	PH0583011	CAP SCREW
12	PH0583012	LOCK WASHER
13	PH0583013	GASKET
14	PH0583014	BALL BEARING
15	PH0583015	OIL SEAL
16	PH0583016	FRONT PLATE
17	PH0583017	CYLINDER
18	PH0583018	ROTOR
19	PH0583019	ROTOR BLADE
20	PH0583020	REAR PLATE
21	PORS065	O-RING 64.5 X 2.0 S65
22	PH0583022	ROLL PIN
23	PH0583023	MOTOR HOUSING
24	PH0583024	MOTOR GASKET
25	PH0583025	BUSHING
26	PH0583026	REVERSE VALVE
27	PORP021	O-RING 20.8 X 2.4 P21

REF	PART #	DESCRIPTION
28	PH0583028	REVERSE LEVER
29	PRP43M	ROLL PIN 3 X 22
30	PH0583030	EXHAUST DEFLECTOR
31	PH0583031	PHLP HD SCREW
32	PH0583032	SPACER
33	PH0583033	CLUTCH CAGE
34	PH0583034	DRIVE CAM
35	PH0583035	CLUTCH DOG
36	PH0583036	CLUTCH PIN
37	PH0583037	FLANGE BUSHING
38	PH0583038	CLUTCH HOUSING
39	PH0583039	BUSHING
40	PSB03	CAP SCREW 5/16-18 X 1
42	PH0583042	ANVIL
43	PORP016	O-RING 15.8 X 2.4 P16
44	PH0583044	EXT RETAINING RING
45	PH0583045	SIDE HANDLE
46	PH0583046	CAP SCREW
47	PH0583047	RUBBER HOUSING SEAL
48	PH0583048	RUBBER THROTTLE SEAL
49	PH0583049	SET SCREW
50	PH0583050	HOUSING OIL SEAL
51	PH0583051	O-RING
52	PORP020	O-RING 19.8 X 2.4 P20
54	PH0583054	RETAINER
*55	PH0583055	O-RING KIT

* Not Included; for aftermarket purchase only

Free Manuals Download Website

<http://myh66.com>

<http://usermanuals.us>

<http://www.somanuals.com>

<http://www.4manuals.cc>

<http://www.manual-lib.com>

<http://www.404manual.com>

<http://www.luxmanual.com>

<http://aubethermostatmanual.com>

Golf course search by state

<http://golfingnear.com>

Email search by domain

<http://emailbydomain.com>

Auto manuals search

<http://auto.somanuals.com>

TV manuals search

<http://tv.somanuals.com>