

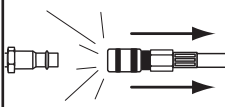


MODEL H0588 1/4" ANGLE DIE GRINDER INSTRUCTION SHEET

⚠ WARNING



EYE INJURY HAZARD!
Always wear safety glasses when using this tool to prevent serious personal



INJURY HAZARD!
Always disconnect tool from air to prevent unexpected operation during service.



EXPLOSION HAZARD!
Never exceed 120 PSI.



Figure 1. Model H0588.

Introduction

Angle Die Grinders are excellent for reaching sideways into areas that are relatively confined. No-load speed is 18,000 RPM and collet size is 1/4". Requires 90 PSI with 4 CFM of compressor capacity. Air inlet is 1/4" and air exhaust is in the rear. Weighs just over 1 lb.

Inventory

- A. Die Grinder..... 1
- B. Flat Wrench 17mm..... 1
- C. Flat Wrench 12mm..... 1

Operation

Tool requires 90 PSI to operate correctly.

To improve tool lifespan, use a filter/lubricator/regulator as shown in **Figure 2**. Otherwise, lubricate daily with a couple drops of pneumatic tool oil directly into the air fitting as shown in **Figure 3**.

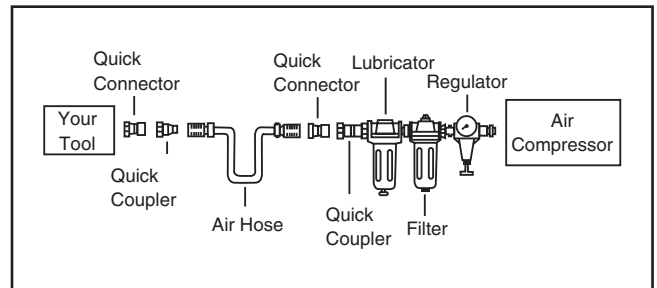


Figure 2. Installing your tool.

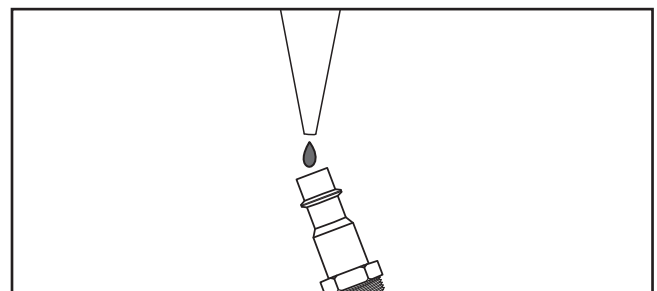
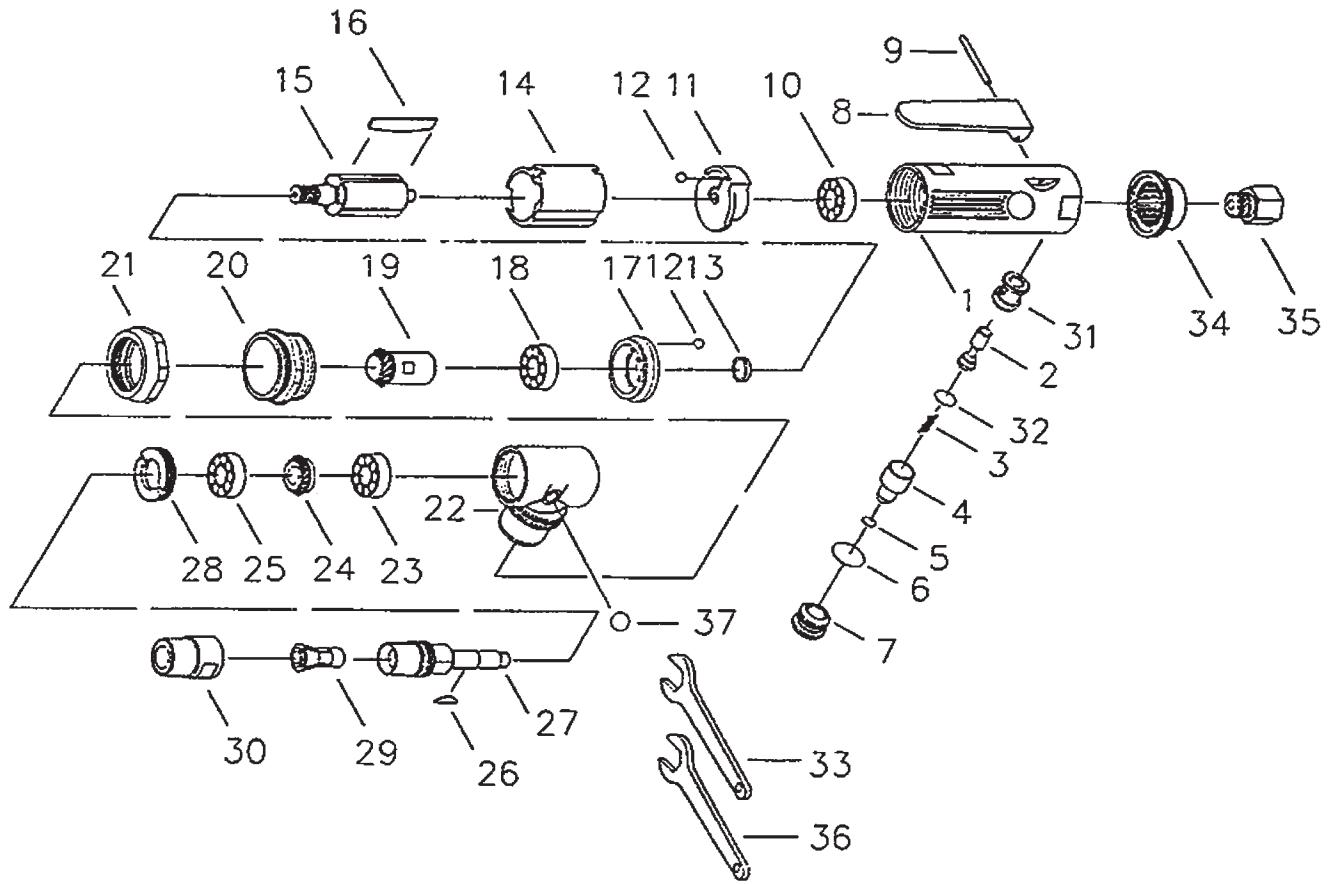


Figure 3. Lubricating directly into air fitting.

If you need help with your new pneumatic tool, call our Tech Support at: (570) 546-9663.

COPYRIGHT © FEBRUARY, 2006 BY GRIZZLY INDUSTRIAL, INC.
WARNING: NO PORTION OF THIS MANUAL MAY BE REPRODUCED IN ANY SHAPE OR FORM WITHOUT THE WRITTEN APPROVAL OF GRIZZLY INDUSTRIAL, INC.
 #KM7957 PRINTED IN TAIWAN

H0588 Parts Breakdown and List



REF	PART #	DESCRIPTION
1	PH0588001	MOTOR HOUSING
2	PH0588002	THROTTLE VALVE
3	PH0588003	THROTTLE VALVE SPRING
4	PH0588004	AIR REGULATOR
5	PH0588005	O-RING
6	PH0588006	O-RING
7	PH0588007	VALVE SCREW
8	PH0588008	THROTTLE LEVER
9	PH0588009	THROTTLE LEVER PIN
10	PH0588010	REAR ROTOR BALL BEARING
11	PH0588011	REAR END PLATE
12	PH0588012	BALL
13	PH0588013	ROTOR COLLAR
14	PH0588014	CULINDER
15	PH0588015	ROTOR
16	PH0588016	ROTOR BLADE
17	PH0588017	FRONT END PALTE
18	PH0588018	FRONT ROTOR BALL BEARING
19	PH0588019	PINION GEAR

REF	PART #	DESCRIPTION
20	PH0588020	MOTOR CLAMP
21	PH0588021	HOUSING CAP
22	PH0588022	ANGLE HEAD HOUSING
23	PH0588023	REAR SPINDLE BALL BEARING
24	PH0588024	SPINDLE GEAR
25	PH0588025	FRONT SPINDLE BALL BEARING
26	PH0588026	WOODRUFF KEY
27	PH0588027	SPINDLE
28	PH0588028	CLAMP NUT
29	PH0588029	COLLET
30	PH0588030	COLLET NUT
31	PH0588031	THROTTLE VALVE BUSHING
32	PH0588032	O-RING
33	PH0588033	FLAT WRENCH
34	PH0588034	EXHAUST SLEEVE
35	PH0588035	AIR INLET
36	PH0588036	FLAT WRENCH
37	PH0588037	BALL

Free Manuals Download Website

<http://myh66.com>

<http://usermanuals.us>

<http://www.somanuals.com>

<http://www.4manuals.cc>

<http://www.manual-lib.com>

<http://www.404manual.com>

<http://www.luxmanual.com>

<http://aubethermostatmanual.com>

Golf course search by state

<http://golfingnear.com>

Email search by domain

<http://emailbydomain.com>

Auto manuals search

<http://auto.somanuals.com>

TV manuals search

<http://tv.somanuals.com>