



MODEL H8175 PROFESSIONAL PNEUMATIC GLUE GUN INSTRUCTION SHEET

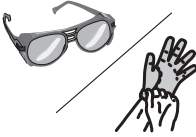
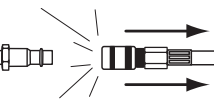


⚠ WARNING	
	EYE/SKIN BURN HAZARD! Wear safety glasses and protective clothing when using this tool!
	INJURY HAZARD! Always disconnect tool from air to prevent unexpected operation during service!
	DO NOT EXCEED 100 PSI! Personal injury could occur.
	ELECTRICITY HAZARD! Electrocution or fire could result if this tool is not properly grounded. Do not remove the ground pin.



Figure 1. Model H8175.

Specifications

Air Regulator Inlet Size	1/4" NPT
Operating Temperature	284°F–428°F
Maximum Temperature	446°F
Operating Air Pressure.....	90 PSI
Glue Stick Diameter	1/2"
Cord Length.....	2 ft.
Weight	3 lbs

Operation

1. Connect the glue gun to the air regulator and connect the air regulator to the air supply.
2. Plug the glue gun into a grounded outlet and turn it **ON** with the power switch located at the base of the glue gun.
3. Allow the gun to heat up for approximately 3–5 minutes.

4. Insert a 1/2" diameter glue stick into the back of the gun.
5. Once the gun has fully heated, slowly squeeze the trigger until the melted material begins to flow from the nozzle.

Note: When hot, rest the gun with the tip facing down, as shown in **Figure 1**, to prevent melted glue from escaping the chamber and increasing the risk of fire or personal injury.

6. After the gluing operation is complete, allow the glue gun to fully cool before storing it. Glue sticks may remain in the glue gun when it is not in use and be re-melted when the glue gun is used again.

Note: Never pull the glue stick out through the back of the gun or it may damage the feed mechanism. Cut off the extra portion of the glue and feed the remainder through the glue gun.

COPYRIGHT © MAY, 2008 BY GRIZZLY INDUSTRIAL, INC.
**WARNING: NO PORTION OF THIS MANUAL MAY BE REPRODUCED IN ANY SHAPE
 OR FORM WITHOUT THE WRITTEN APPROVAL OF GRIZZLY INDUSTRIAL, INC.**
 #JM10780 PRINTED IN TAIWAN

Air Supply

The glue gun MUST be regularly lubricated with 3-4 drops of air tool oil directly into the air fitting before each use, as shown in **Figure 2**.

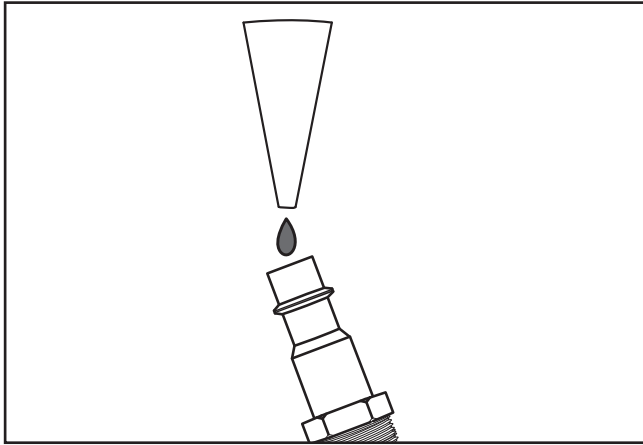


Figure 2. Manual Oiling.

For best results, we recommend using an in-line filter, lubricator, and regulator, as shown in **Figure 3**.

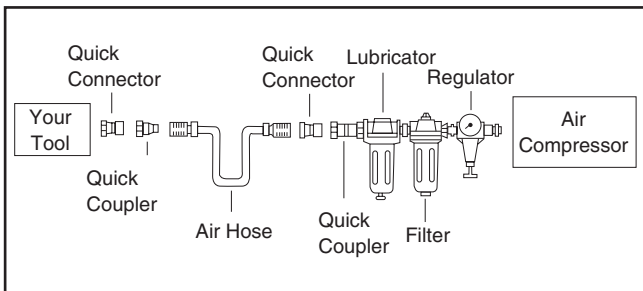


Figure 3. Installing your tool.

An air regulator is supplied with the Model H8175 so air pressure going to the gun can be further regulated. To reduce the risk of damage to the air regulator, we recommend mounting the air regulator using the mounting bracket located at the top (see **Figure 4**).

The mounting bracket can be swiveled around to four different mounting locations on the air regulator. To adjust the mounting bracket position, loosen the retaining ring and rotate the mounting bracket until the small tab fits into one of the four mounting slots (see **Figure 4**). Tighten the retaining ring and securely mount the air regulator.

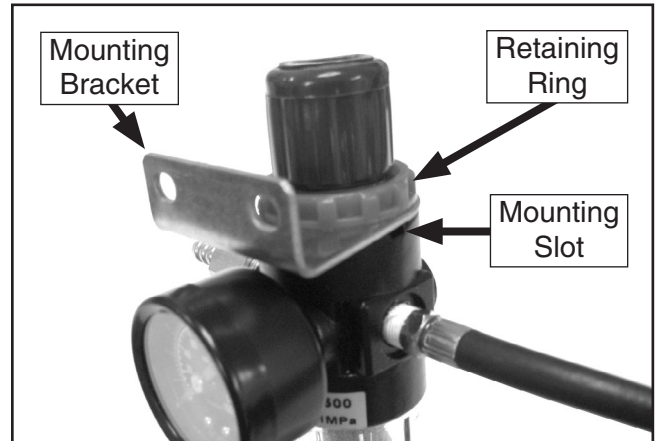


Figure 4. Mounting bracket.

Air Pressure Control

The rate at which the glue is forced from the gun is dependent on the amount of air pressure. The air pressure can be adjusted directly at the gun using the air control knob shown in **Figure 5**. Lock the adjustment by screwing the adjust nut towards the back of the air control knob until it is flush with the gun body.



Figure 5. Air control knob.

Changing Nozzles

The Model H8175 glue gun comes with three nozzles for different gluing applications and output amounts. The all metal nozzle is for heavy duty and high output applications. The long tip of the silicon nozzle is ideal for bonding items with minimal accessibility. The silicon coating reduces the risk of accidental burns. After extensive use, the nozzle may begin to drip excessively or produce an intermittent flow. Nozzles should be changed regularly to ensure an even flow and reduce the risk of a possible fire hazard.

To change the glue gun nozzle:

1. Heat the gun for approximately 1 minute to soften the glue.
2. Put on a pair of gloves, and use a wrench to remove the nozzle.
3. Flush the remaining glue through the gun to clean the chamber.

Note: *Never pull the glue stick out through the back of the gun or it may damage the feed mechanism.*

4. Thread the new nozzle onto the gun until snug—do not overtighten.

Fluid Output Adjustment

The amount of glue being used can be preset by using the fluid control knob, as shown in **Figure 6**. Lock the adjustment by screwing the adjust nut towards the back of the fluid control knob until it is flush with the gun body.

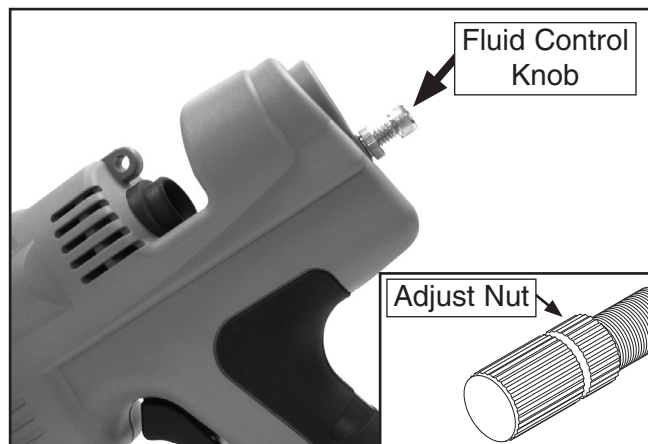


Figure 6. Fluid control knob.

Temperature Adjustment

The Model H8175 glue gun temperature can be adjusted from 284°F–428°F.

To adjust the glue gun temperature:

1. Using the screwdriver, adjust the temperature control located at the top of the glue gun (**Figure 7**).

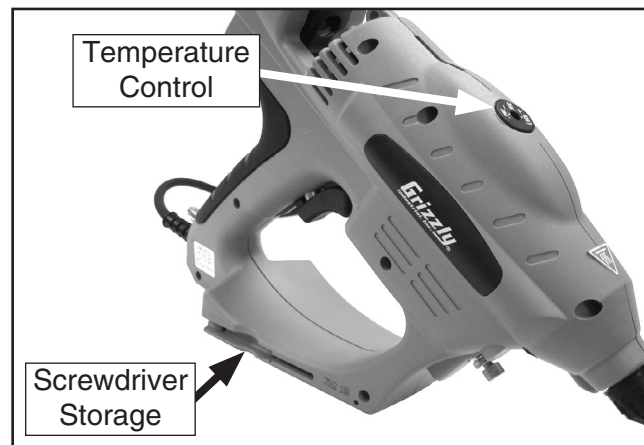


Figure 7. Temperature control.

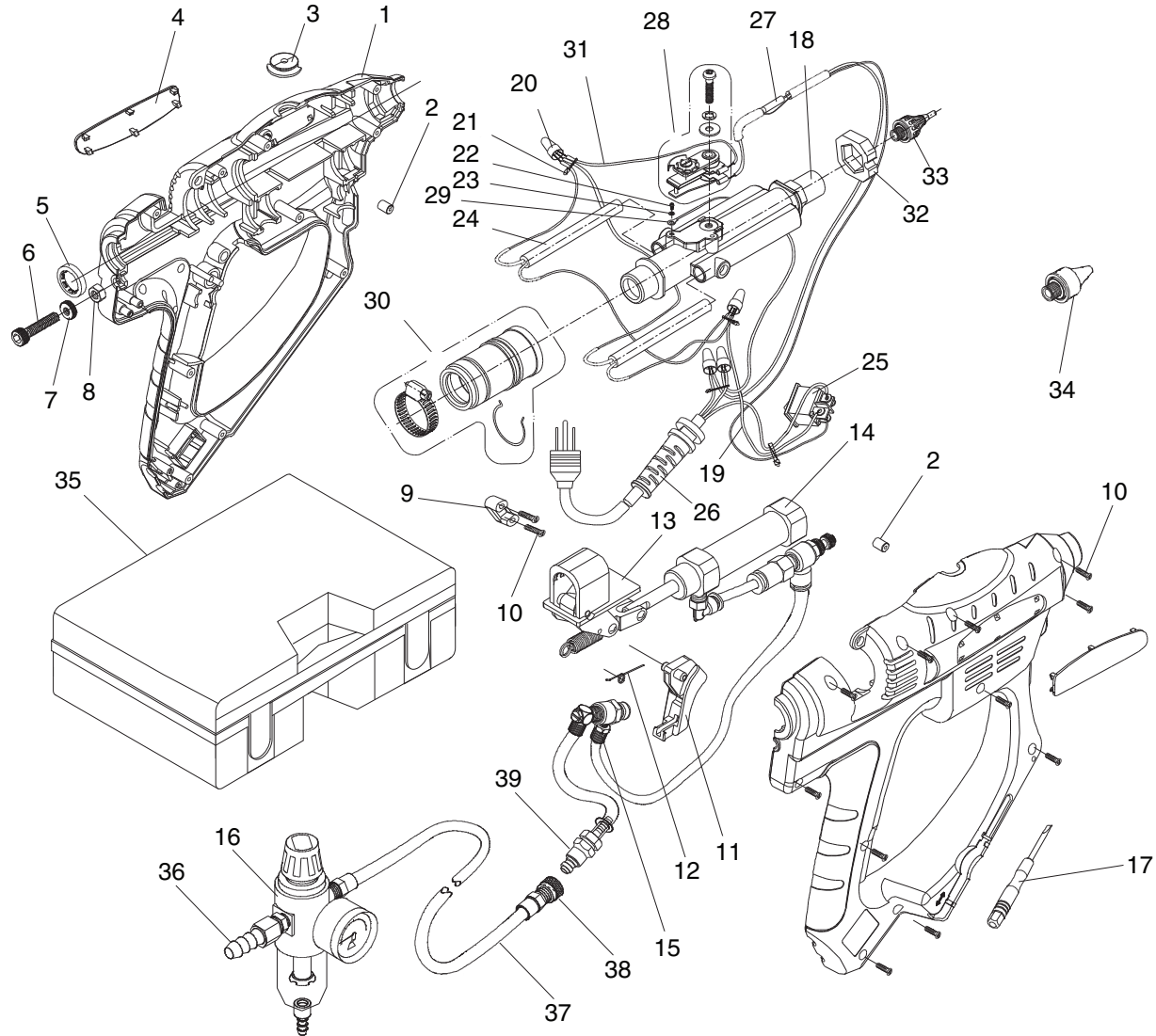
Note: *The screwdriver can be stored in the base of the glue gun for quick future use.*

NOTICE

Some materials are heat sensitive and may become damaged either by the heated nozzle or the glue. Test the temperature setting on a scrap piece of material.

If you need help with your new pneumatic tool, call our Tech Support at: (570) 546-9663.

H8175 Parts Breakdown and List



REF PART #	DESCRIPTION
1	PH8175001 GUN BODY
2	PH8175002 SPACER
3	PH8175003 TEMPERATURE CONTROL
4	PH8175004 GRIZZLY NAME PLATE
5	PH8175005 RUBBER INLET RING
6	PH8175006 FLUID CONTROL KNOB
7	PH8175007 FLUID ADJUST NUT
8	PH8175008 SPECIAL NUT
9	PH8175009 CORD BRACKET
10	PHTEK9M TAP SCREW M3 X 15
11	PH8175011 TRIGGER
12	PH8175012 TORSION SPRING
13	PH8175013 FEEDER ASSEMBLY
14	PH8175014 AIR CYLINDER ASSEMBLY
15	PH8175015 AIR VALVE
16	PH8175016 AIR REGULATOR ASSEMBLY
17	PH8175017 SCREWDRIVER
18	PH8175018 CHAMBER ASSEMBLY
19	PH8175019 WIRE
20	PH8175020 WIRE NUT

REF PART #	DESCRIPTION
21	PH8175021 CABLE TIE
22	PH8175022 SCREW
23	PH8175023 WASHER
24	PH8175024 HEATING ASSEMBLY
25	PH8175025 POWER SWITCH ASSEMBLY
26	PH8175026 POWER CORD
27	PH8175027 FUSE ASSEMBLY
28	PH8175028 TEMPERATURE ASSEMBLY
29	PH8175029 GROUND WIRE ASSEMBLY
30	PH8175030 INLET TUBE ASSEMBLY
31	PH8175031 WIRE
32	PH8175032 NOZZLE SPACER
33	PH8175033 SILICON NOZZLE
34	PH8175034 METAL NOZZLE
35	PH8175035 CASE
36	PH8175036 FEMALE BARBED HOSE FITTING 1/4" NPT
37	PH8175037 AIR REGULATOR HOSE
38	PH8175038 AIR REGULATOR HOSE QUICK CONNECT
39	PH8175039 MALE AIR FITTING 1/8" NPT

Free Manuals Download Website

<http://myh66.com>

<http://usermanuals.us>

<http://www.somanuals.com>

<http://www.4manuals.cc>

<http://www.manual-lib.com>

<http://www.404manual.com>

<http://www.luxmanual.com>

<http://aubethermostatmanual.com>

Golf course search by state

<http://golfingnear.com>

Email search by domain

<http://emailbydomain.com>

Auto manuals search

<http://auto.somanuals.com>

TV manuals search

<http://tv.somanuals.com>