

# *Grizzly* **Industrial, Inc.** <sup>®</sup>

## **BENCH TOP DUAL FAN DUST FILTER MODEL G9955 INSTRUCTION MANUAL**



COPYRIGHT © APRIL, 2004 BY GRIZZLY INDUSTRIAL, INC.  
**WARNING: NO PORTION OF THIS MANUAL MAY BE REPRODUCED IN ANY SHAPE  
OR FORM WITHOUT THE WRITTEN APPROVAL OF GRIZZLY INDUSTRIAL, INC.**  
#6195 PRINTED IN TAIWAN

# WARNING

Some dust created by power sanding, sawing, grinding, drilling, and other construction activities contains chemicals known to the State of California to cause cancer, birth defects or other reproductive harm. Some examples of these chemicals are:

- Lead from lead-based paints.
- Crystalline silica from bricks, cement, and other masonry products.
- Arsenic and chromium from chemically treated lumber.

Your risk from these exposures varies, depending on how often you do this type of work. To reduce your exposure to these chemicals: work in a well ventilated area, and work with approved safety equipment, such as those dust masks that are specially designed to filter out microscopic particles.

# Table of Contents

<b>SECTION 1: SAFETY</b> .....	<b>2</b>
Safety Instructions for Power Tools .....	2
Additional Safety for Dust Filters.....	4
<b>SECTION 2: GENERAL INFORMATION</b> .....	<b>5</b>
Commentary.....	5
Contact Info.....	5
Machine Data .....	5
<b>SECTION 3: CIRCUIT REQUIREMENTS</b> .....	<b>6</b>
110V Operation .....	6
<b>SECTION 4: SET UP</b> .....	<b>7</b>
Unpacking .....	7
Inventory.....	7
Assembly.....	7
<b>SECTION 5: OPERATIONS</b> .....	<b>8</b>
<b>SECTION 6: MAINTENANCE</b> .....	<b>9</b>
Changing the Filter.....	9
<b>SECTION 7: REFERENCE INFO</b> .....	<b>10</b>
Aftermarket Accessories .....	10
G9955 Wire Diagram .....	11
G9955 Parts List .....	12
G9955 Parts Breakdown .....	13
Warranty and Returns .....	14

# SECTION 1: SAFETY

## WARNING

### For Your Own Safety, Read Instruction Manual Before Operating this Equipment

The purpose of safety symbols is to attract your attention to possible hazardous conditions. This manual uses a series of symbols and signal words which are intended to convey the level of importance of the safety messages. The progression of symbols is described below. Remember that safety messages by themselves do not eliminate danger and are not a substitute for proper accident prevention measures.



Indicates an imminently hazardous situation which, if not avoided, **WILL** result in death or serious injury.



Indicates a potentially hazardous situation which, if not avoided, **COULD** result in death or serious injury.



Indicates a potentially hazardous situation which, if not avoided, **MAY** result in minor or moderate injury. It may also be used to alert against unsafe practices.

**NOTICE**

This symbol is used to alert the user to useful information about proper operation of the equipment.

## WARNING

### Safety Instructions for Power Tools

- KEEP GUARDS IN PLACE** and in working order.
- REMOVE ADJUSTING KEYS AND WRENCHES.** Form a habit of checking to see that keys and adjusting wrenches are removed from tool before turning on.
- KEEP WORK AREA CLEAN.** Cluttered areas and benches invite accidents.
- DO NOT USE IN DANGEROUS ENVIRONMENT.** DO NOT use power tools in damp or wet locations, or where any flammable or noxious fumes may exist. Keep work area well lighted.
- KEEP CHILDREN AND VISITORS AWAY.** All children and visitors should be kept at a safe distance from work area.
- MAKE WORKSHOP CHILD PROOF** with padlocks, master switches, or by removing starter keys.
- DO NOT FORCE TOOL.** It will do the job better and safer at the rate for which it was designed.
- USE RIGHT TOOL.** DO NOT force tool or attachment to do a job for which it was not designed.

# WARNING

## Safety Instructions for Power Tools

- 9. USE PROPER EXTENSION CORD.** Make sure your extension cord is in good condition. Conductor size should be in accordance with the chart below. The amperage rating should be listed on the motor or tool nameplate. An undersized cord will cause a drop in line voltage resulting in loss of power and overheating. Your extension cord must also contain a ground wire and plug pin. Always repair or replace extension cords if they become damaged.

Minimum Gauge for Extension Cords

AMP RATING	LENGTH		
	25ft	50ft	100ft
0-6	16	16	16
7-10	16	16	14
11-12	16	16	14
13-16	14	12	12
17-20	12	12	10
21-30	10	10	No

- 10. WEAR PROPER APPAREL.** DO NOT wear loose clothing, gloves, neckties, rings, bracelets, or other jewelry which may get caught in moving parts. Non-slip footwear is recommended. Wear protective hair covering to contain long hair.
- 11. ALWAYS USE SAFETY GLASSES.** Also use face or dust mask if cutting operation is dusty. Everyday eyeglasses only have impact resistant lenses, they are NOT safety glasses.
- 12. SECURE WORK.** Use clamps or a vise to hold work when practical. It is safer than using your hand and frees both hands to operate tool.
- 13. DO NOT OVERREACH.** Keep proper footing and balance at all times.
- 14. MAINTAIN TOOLS WITH CARE.** Keep tools sharp and clean for best and safest performance. Follow instructions for lubricating and changing accessories.

- 15. USE RECOMMENDED ACCESSORIES.** Consult the instruction manual for recommended accessories. The use of improper accessories may cause risk of injury.

- 16. REDUCE THE RISK OF UNINTENTIONAL STARTING.** On machines with magnetic contact starting switches there is a risk of starting if the machine is bumped or jarred. Always disconnect from power source before adjusting or servicing. Make sure switch is turned OFF before reconnecting.

- 17. MANY WOODWORKING TOOLS CAN “KICKBACK” THE WORKPIECE** toward the operator if not handled properly. Know what conditions can create “kickback” and know how to avoid them. Read the manual accompanying the machine thoroughly.

- 18. CHECK DAMAGED PARTS.** Before further use of the tool, a guard or other part that is damaged should be carefully checked to determine that it will operate properly and perform its intended function. Check for alignment of moving parts, binding of moving parts, breakage of parts, mounting, and any other conditions that may affect its operation. A guard or other part that is damaged should be properly repaired or replaced.

- 19. NEVER LEAVE TOOL RUNNING UNATTENDED. TURN POWER OFF. DO NOT** leave tool until it comes to a complete stop.

- 20. NEVER OPERATE A MACHINE WHEN TIRED, OR UNDER THE INFLUENCE OF DRUGS OR ALCOHOL.** Full mental alertness is required at all times when running a machine.

- 21. NEVER ALLOW UNSUPERVISED OR UNTRAINED PERSONNEL TO OPERATE THE MACHINE.** Make sure any instructions you give in regards to the operation of the machine are approved, correct, safe, and clearly understood.

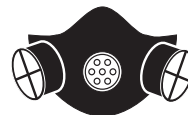
# **⚠ WARNING**

## **Additional Safety for Dust Filters**

- 1. THIS DUST FILTER IS TO BE USED FOR WOOD DUST ONLY.** DO NOT use this machine to filter toxic fumes or paint spray. DO NOT use this machine to dissipate smoke or fumes.
- 2. UNPLUG MACHINE BEFORE REMOVING FILTER.** Removing the filter exposes the fan blade, which may cause serious injury if contacted while the machine is connected to its power source.
- 3. PROBLEMS CONCERNED WITH ANY MOVING PARTS** or accessories must be investigated and corrected with the power disconnected and after everything has come to a complete stop.
- 4. SUSPENDED DUST PARTICLES IN CONJUNCTION WITH AN IGNITION SOURCE,** may cause an explosion. Do not operate this machine in areas where explosion risks would be high if dust were dispersed into the area. Areas of high risk include, but are not limited to, areas near pilot lights or open flames.
- 5. AVOID COLLECTING ANY MATERIAL THAT IS BURNING OR SMOKING,** this includes matches, cigarettes, and hot ashes.
- 6. ALWAYS OPERATE THE MACHINE WITH THE FILTER IN PLACE.** When the filter is removed, the fan is exposed to the unfiltered opening.
- 7. IF AT ANY TIME YOU ARE EXPERIENCING DIFFICULTIES PERFORMING THE INTENDED OPERATION,** stop using the machine! Then contact our service department or ask a qualified expert how the operation should be performed.
- 8. BE AWARE THAT CERTAIN WOODS MAY CAUSE AN ALLERGIC** reaction in people and animals, especially when exposed to fine dust. Make sure you know what type of wood dust you will be exposed to in case there is a possibility of an allergic reaction. Always wear an ANSI approved respirator!
- 9. THIS MACHINE WILL NOT PROTECT AGAINST LEAD-PAINT DUST OR ASBESTOS FIBERS.** These materials must be collected with special equipment because of the high hazard to human health. DO NOT attempt to collect these materials with this machine.

### **⚠ CAUTION**

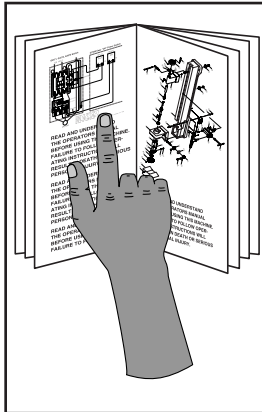
No list of safety guidelines can be complete. Every shop environment is different. Always consider safety first, as it applies to your individual working conditions. Use this and other machinery with caution and respect. Failure to do so could result in serious personal injury, damage to equipment or poor work results.



### **⚠ CAUTION**

Operations that generate large amounts of any kind of dust may warrant the use of a respirator even though the air filter is running. The dust filter is not a substitute for a respirator!

# SECTION 2: GENERAL INFORMATION



**⚠ WARNING**

If you do not read this entire manual before operating the machine, you will greatly increase your chances of serious personal injury. To protect yourself, read and understand this entire manual!

## Commentary

Grizzly Industrial, Inc. is proud to offer the Model G9955 Bench Top Dual Fan Dust Filter. This dust filter is part of Grizzly's growing family of fine machinery. When used according to the guidelines stated in this manual, you can expect years of trouble-free, enjoyable operation.

We are also pleased to provide this manual with the Model G9955. It was written to guide you through assembly, review safety considerations, and cover general operating procedures. It represents our latest effort to produce the best documentation possible.

The specifications, drawings, and photographs illustrated in this manual represent the Model G9955 as supplied when the manual was prepared. However, owing to Grizzly's policy of continuous improvement, changes may be made at any time with no obligation on the part of Grizzly. For your convenience, we always keep current Grizzly manuals available on our website at [www.grizzly.com](http://www.grizzly.com). Any updates to your machine will be reflected in these manuals as soon as they are complete.



## Contact Info

If you have any comments or criticisms that you feel we should address in our next printing, please write to us at:

Grizzly Industrial, Inc.  
% Technical Documentation  
P.O. Box 2069  
Bellingham, WA 98227

Most importantly, we stand behind our machines. We have excellent regional service departments at your disposal should the need arise.

If you have any service questions or parts requests, please call or write to us at the location listed below.

Grizzly Industrial, Inc  
1203 Lycoming Mall Circle  
Muncy, PA 17756  
Phone: (570) 546-9663  
Fax: (800) 438-5901  
E-Mail: [techsupport@grizzly.com](mailto:techsupport@grizzly.com)  
Web Site: <http://www.grizzly.com>



## Machine Data

Motor ..... 1/20 HP x 2 110 Volt  
Amp Draw..... 0.4 x 2  
Dimensions..... 20 7/8"L x 8 1/4"D x 10 1/2"H  
Filter Dimensions..... 20"L x 10"H x 2"D  
Weight .....21 lbs.  
Airflow..... 390 CFM  
Filtration.....5 Microns



# SECTION 3: CIRCUIT REQUIREMENTS

## 110V Operation

### **⚠️ WARNING**

**Serious personal injury could occur if you connect the machine to the power source before you have completed the set up process. DO NOT connect the machine to the power source until instructed to do so.**

#### **Amperage Draw**

The  $\frac{1}{20}$  HP motors on the Model G9955 will draw the following amps:

110V Motor Draw .....0.4 x 2 Amps

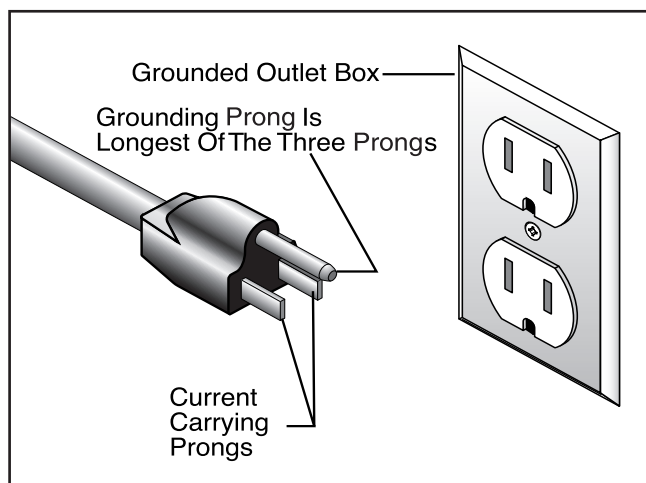
#### **Circuit Breaker Requirements**

Install your machine on a dedicated circuit to reduce the possibility of tripping the circuit breaker. If the circuit breaker frequently trips, have the circuit inspected by a qualified electrician. Never use a larger circuit breaker than stated below.

Circuit Breaker..... 5 Amp, 1 Pole

#### **Plug Type**

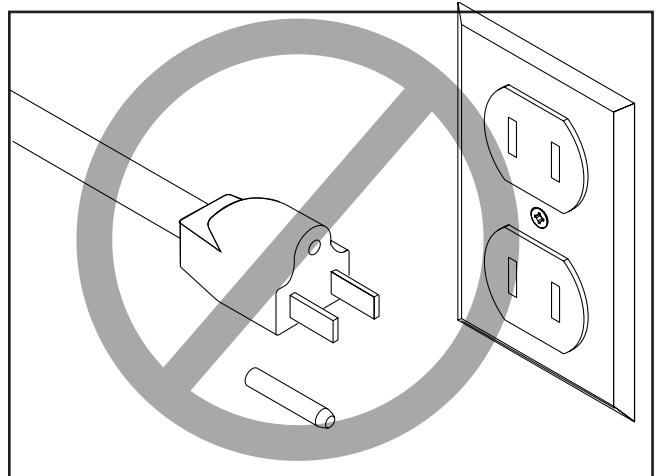
The Model G9955 is supplied with a 5-15 plug, similar to **Figure 1**.



**Figure 1.** Typical grounding type 5-15 plug and receptacle.

#### **Grounding**

In the event of an electrical short, grounding reduces the risk of electric shock by providing a path of least resistance to disperse electric current. This tool is equipped with a power cord that has a plug with an equipment-grounding prong. The outlet must be properly installed and grounded in accordance with all local codes and ordinances.



### **⚠️ CAUTION**

**This machine must have a ground prong in the plug to help ensure that it is grounded. DO NOT remove ground prong from plug to fit into a two-pronged outlet! If the plug will not fit the outlet, have the proper outlet installed by a qualified electrician.**

#### **Extension Cords**

- Make sure the cord is rated Standard Service (grade S) or better.
- The extension cord must also contain a ground wire and plug pin.
- Use at least a 16 gauge cord.
- DO NOT use a cord longer than 50 feet!





# SECTION 4: SET UP

## Unpacking

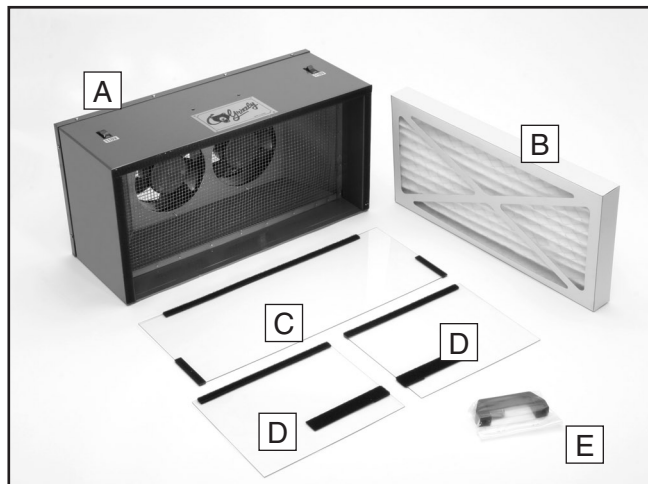
Your machine left our warehouse in a carefully packed box. If you discover the machine is damaged after you have signed for delivery, *please immediately call Customer Service at (570) 546-9663 for advice.*

Save the containers and all packing materials for possible inspection by the carrier or its agent. *Otherwise, filing a freight claim can be difficult.*



## Inventory

After all the parts have been removed from the carton, you should have (see **Figure 2**):



**Figure 2.** Package inventory.

A.	Dual Fan Filter Unit .....	1
B.	Paper Filter.....	1
C.	Clear Plastic Hood Top .....	1
D.	Clear Plastic Hood Sides .....	2
E.	Hardware Bag .....	1
	—Phillips Head Screw M6-1.0 x 20 .....	2
	—Plastic Handle.....	1

In the event that any non proprietary parts are missing (e.g. one or two bolts), we would be glad to replace them, or replacements can also be obtained at your local hardware store.



## Assembly

Hardware and Components Needed	Qty
Phillips Head Screw M6-1.0 x 20 .....	2
Plastic Handle .....	1
Clear Plastic Hood Top .....	1
Clear Plastic Hood Sides .....	2

Tools Needed	Qty
Phillips Head Screwdriver .....	1

### To Assemble the dust filter:

1. Attach the handle to the top of the filter with the Phillips head screws.
2. Attach the clear plastic sides and top to the filter with the hook and loop strips as shown in **Figure 3**.



**Figure 3.** Clear plastic hood attachment detail.



# SECTION 5: OPERATIONS

---

---



## **⚠ CAUTION**

Operations that generate large amounts of any kind of dust may warrant the use of a respirator even though the dust filter is running. The dust filter is not a substitute for a respirator!

## **⚠ WARNING**

**THIS DUST FILTER IS TO BE USED FOR WOOD DUST ONLY.** DO NOT use this machine to filter toxic fumes or paint spray. DO NOT use this machine to dissipate smoke or fumes.

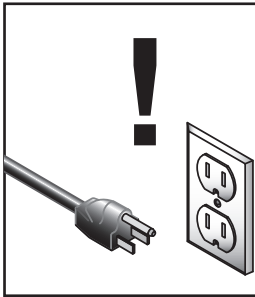
The Model G9955 Bench Top Dual Fan Dust Filter is designed specifically to filter fine airborne dust particles. The operator can adjust the clear plastic hood to better channel the airborne dust from the workpiece into the bench top filter.

Typical applications for the bench top filter are to collect dust from small wood carving and sanding tools with both power and manual operation.



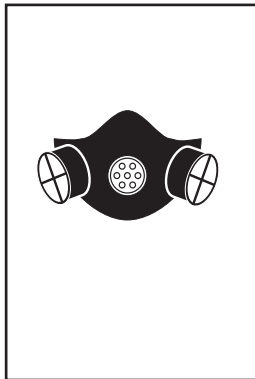
# SECTION 6: MAINTENANCE

---



## **⚠️ WARNING**

To avoid personal injury, disconnect power to air filter when performing any adjustments, cleaning or maintenance.



## **⚠️ CAUTION**

Use a respirator when cleaning or changing filters. Dust will become airborne creating a respiratory hazard. For safety, run the hanging air filter for at least 6 minutes while wearing the respirator after cleaning.

---

## Changing the Filter

---

In order to maintain optimal operation, the filter in the Model G9955 should be checked and replaced regularly. Checking the filters once a week in a small home shop is a good habit. Checking it once a day during heavy use is important. Always wear a respirator when checking the filter.

### To check or replace the filter:

1. **Disconnect power to the bench top air filter.**
2. Pull the filter out of its housing and hold it up to a light source.

—If light shines through the filter, shake it off in the garbage and reinstall.

—If no light can be seen, replace the filter.

Please see the current Grizzly catalog for the replacement filter H4985.



# SECTION 7: REFERENCE INFO

---

---

The following pages contain the parts list, parts breakdown diagram, wiring diagram, and the Warranty/Return information for the Model G9955.

If you have any comments regarding this manual, please write to Grizzly at the address below:

Grizzly Industrial, Inc.  
c/o Technical Documentation  
P.O. Box 2069  
Bellingham, WA 98227-2069

We recommend you keep a copy of our current catalog for complete information regarding Grizzly's warranty and return policy. If you need additional technical information, general assistance or replacement parts relating to this machine, please contact the Service Department at the location listed below:

Grizzly Industrial, Inc.  
1203 Lycoming Mall Circle  
Muncy, PA 17756  
Phone: (570) 546-9663  
Fax: (800) 438-5901  
E-Mail: [techsupport@grizzly.com](mailto:techsupport@grizzly.com)  
Web Site: <http://www.grizzly.com>



---

---

## Aftermarket Accessories

---

---

Grizzly carries a complete selection of fine accessories for all of its equipment. Below is a list of useful replacement filters and accessories.

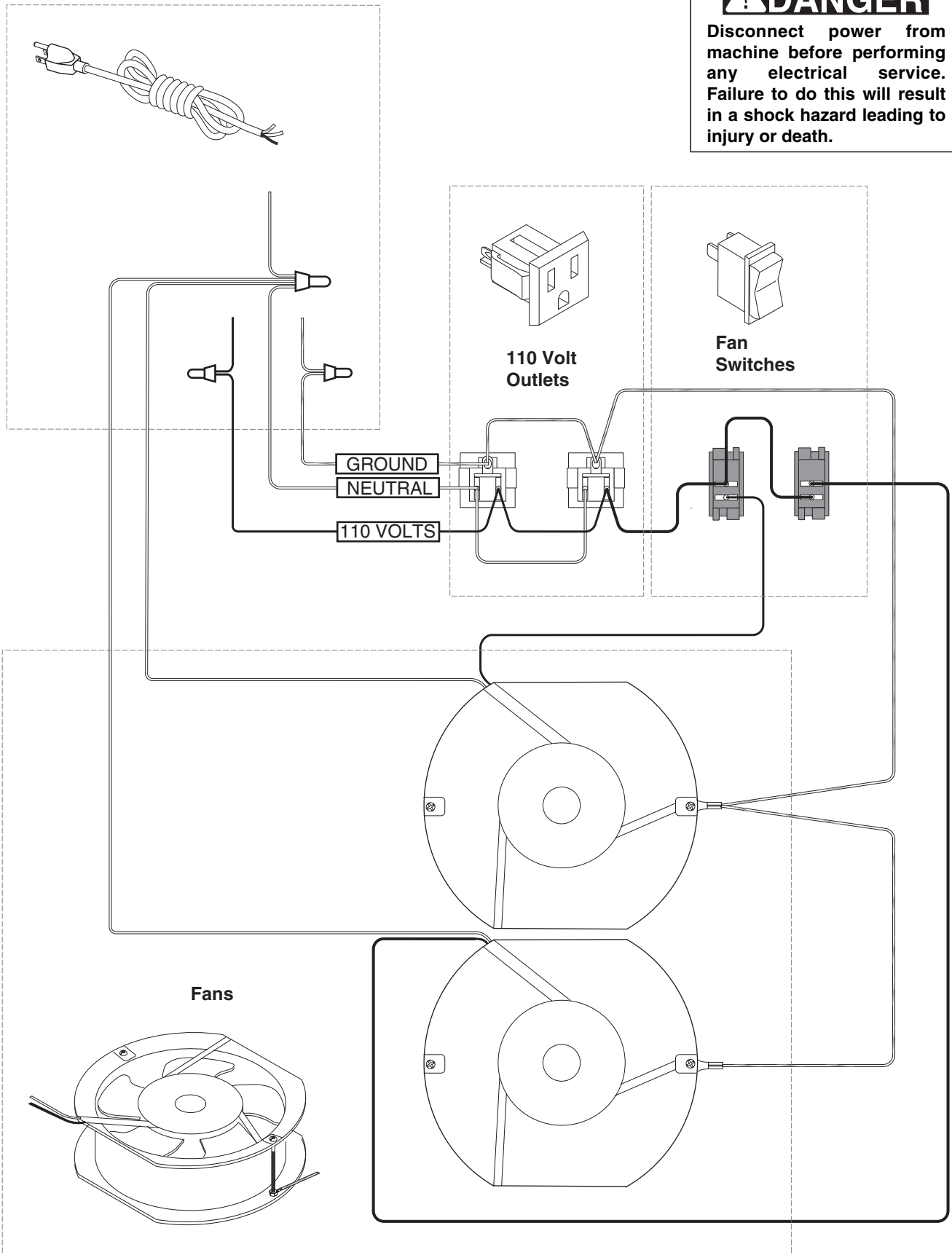
- H4985 Replacement Paper Filter



# G9955 Wire Diagram

**⚠ DANGER**

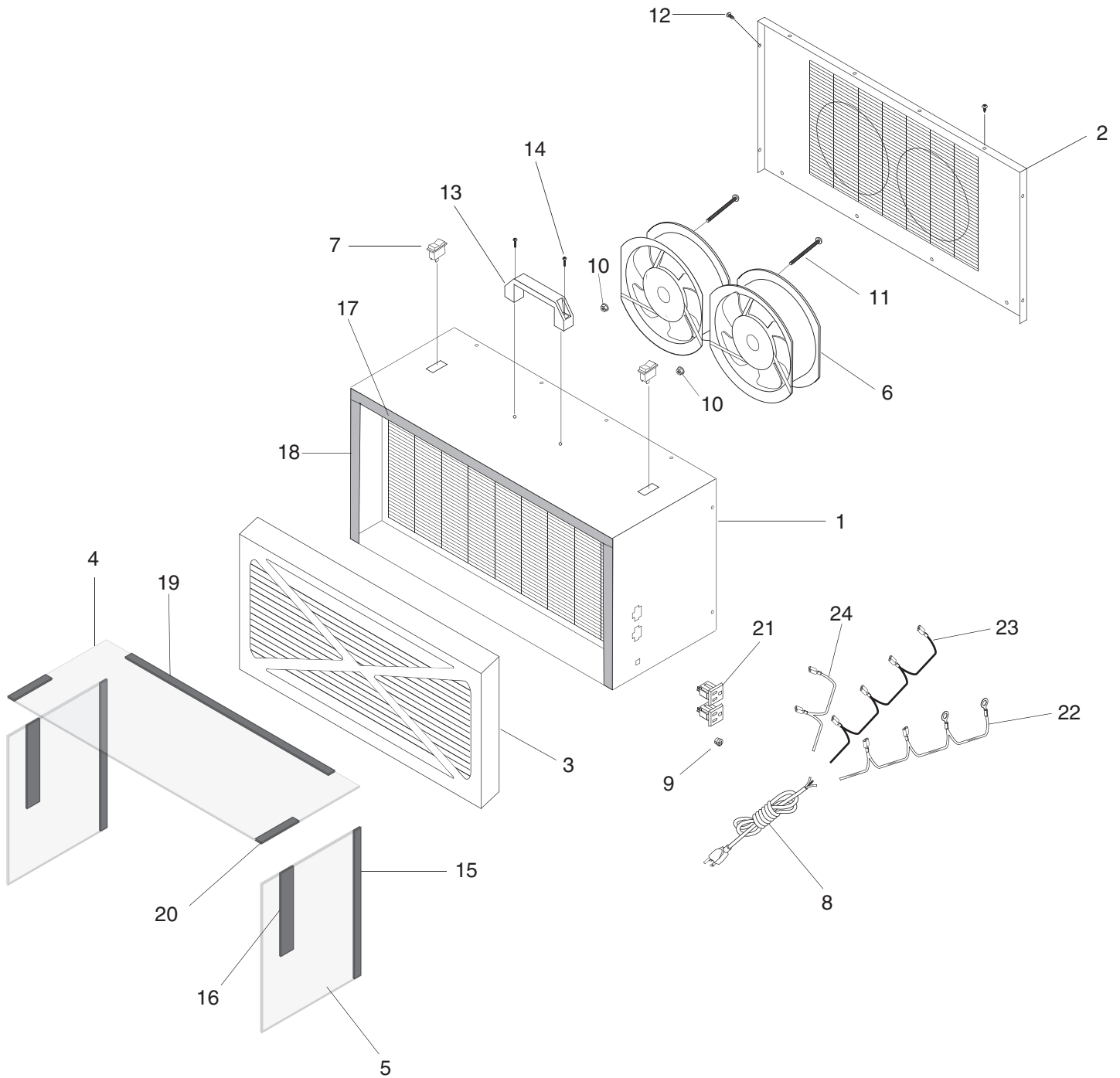
Disconnect power from machine before performing any electrical service. Failure to do this will result in a shock hazard leading to injury or death.



# G9955 Parts List

REF	PART #	DESCRIPTION
1	P9955001	MAIN HOUSING
2	P9955002	REAR HOUSING COVER
3	P9955003	5 MICRON FILTER 20" x 10" x 2"
4	P9955004	CLEAR PLASTIC HOOD TOP
5	P9955005	CLEAR PLASTIC HOOD SIDE
6	P9955006	FAN
7	P9955007	SWITCH
8	PWRCRD110L	POWER CORD
9	P9955009	STRAIN RELIEF 6W3-4S
10	PN04M	HEX NUT M4-.7
11	PS85M	PHLP HD SCR M4-.7 x 60
12	PS38M	PHLP HD SCR M4-.7 x 10
13	P9955013	HANDLE
14	PS26M	PHLP HD SCR M6-1 x 20
15	P9955015	LOOP FASTENER 5/8" x 9-1/2"
16	P9955016	LOOP FASTENER 1" x 7"
17	P9955017	HOOK FASTENER 5/8" x 21"
18	P9955018	HOOK FASTENER 5/8" x 9-1/2"
19	P9955019	LOOP FASTENER 5/8" x 18"
20	P9955020	HOOK FASTENER 1" x 3"
21	P9955021	110V OUTLET S-15R
22	P9955022	GROUNDING WIRE
23	P9955023	110 VOLT WIRE
24	P9955023	NEUTRAL WIRE

# G9955 Parts Breakdown



# Warranty and Returns

---

Grizzly Industrial, Inc. warrants every product it sells for a period of **1 year** to the original purchaser from the date of purchase. This warranty does not apply to defects due directly or indirectly to misuse, abuse, negligence, accidents, repairs or alterations or lack of maintenance. This is Grizzly's sole written warranty and any and all warranties that may be implied by law, including any merchantability or fitness, for any particular purpose, are hereby limited to the duration of this written warranty. We do not warrant or represent that the merchandise complies with the provisions of any law or acts unless the manufacturer so warrants. In no event shall Grizzly's liability under this warranty exceed the purchase price paid for the product and any legal actions brought against Grizzly shall be tried in the State of Washington, County of Whatcom.

We shall in no event be liable for death, injuries to persons or property or for incidental, contingent, special, or consequential damages arising from the use of our products.

To take advantage of this warranty, contact us by mail or phone and give us all the details. We will then issue you a "Return Number," which must be clearly posted on the outside as well as the inside of the carton. We will not accept any item back without this number. Proof of purchase must accompany the merchandise.

The manufacturers reserve the right to change specifications at any time because they constantly strive to achieve better quality equipment. We make every effort to ensure that our products meet high quality and durability standards and we hope you never need to use this warranty.

Please feel free to write or call us if you have any questions about the machine or the manual.

Thank you again for your business and continued support. We hope to serve you again soon.



# WARRANTY CARD

Name \_\_\_\_\_  
 Street \_\_\_\_\_  
 City \_\_\_\_\_ State \_\_\_\_\_ Zip \_\_\_\_\_  
 Phone Number \_\_\_\_\_ E-Mail \_\_\_\_\_ FAX \_\_\_\_\_  
**MODEL: G9955 BENCH TOP DUST FILTER** Serial # \_\_\_\_\_ Order # \_\_\_\_\_

The following information is given on a voluntary basis. It will be used for marketing purposes to help us develop better products and services. Of course, all information is strictly confidential.

- |  |   |
|--|---|
| <p>1. How did you learn about us?</p> <p><input type="checkbox"/> Advertisement                      <input type="checkbox"/> Friend<br/> <input type="checkbox"/> Catalog                                  <input type="checkbox"/> Card Deck<br/> <input type="checkbox"/> World Wide Web<br/> <input type="checkbox"/> Other _____</p> <p>2. Which of the following magazines do you subscribe to.</p> <p><input type="checkbox"/> American Woodworker              <input type="checkbox"/> Practical Homeowner<br/> <input type="checkbox"/> Cabinetmaker                          <input type="checkbox"/> Shop Notes<br/> <input type="checkbox"/> Family Handyman                      <input type="checkbox"/> Today's Homeowner<br/> <input type="checkbox"/> Fine Homebuilding                      <input type="checkbox"/> WOOD<br/> <input type="checkbox"/> Fine Woodworking                      <input type="checkbox"/> Wooden Boat<br/> <input type="checkbox"/> Home Handyman                        <input type="checkbox"/> Woodshop News<br/> <input type="checkbox"/> Journal of Light Construction        <input type="checkbox"/> Woodsmith<br/> <input type="checkbox"/> Old House Journal                      <input type="checkbox"/> Woodwork<br/> <input type="checkbox"/> Popular Mechanics                      <input type="checkbox"/> Woodworker<br/> <input type="checkbox"/> Popular Science                         <input type="checkbox"/> Woodworker's Journal<br/> <input type="checkbox"/> Popular Woodworking                  <input type="checkbox"/> Workbench<br/> <input type="checkbox"/> Other _____</p> <p>3. Which of the following woodworking/remodeling shows do you watch?</p> <p><input type="checkbox"/> Backyard America                      <input type="checkbox"/> The New Yankee Workshop<br/> <input type="checkbox"/> Home Time                                <input type="checkbox"/> This Old House<br/> <input type="checkbox"/> The American Woodworker          <input type="checkbox"/> Woodwright's Shop<br/> <input type="checkbox"/> Other _____</p> <p>4. What is your annual household income?</p> <p><input type="checkbox"/> \$20,000-\$29,999                        <input type="checkbox"/> \$60,000-\$69,999<br/> <input type="checkbox"/> \$30,000-\$39,999                        <input type="checkbox"/> \$70,000-\$79,999<br/> <input type="checkbox"/> \$40,000-\$49,999                        <input type="checkbox"/> \$80,000-\$89,999<br/> <input type="checkbox"/> \$50,000-\$59,999                        <input type="checkbox"/> \$90,000 +</p> <p>5. What is your age group?</p> <p><input type="checkbox"/> 20-29                                        <input type="checkbox"/> 50-59<br/> <input type="checkbox"/> 30-39                                        <input type="checkbox"/> 60-69<br/> <input type="checkbox"/> 40-49                                        <input type="checkbox"/> 70 +</p> <p>6. How long have you been a woodworker?</p> <p><input type="checkbox"/> 0 - 2 Years                                <input type="checkbox"/> 8 - 20 Years<br/> <input type="checkbox"/> 2 - 8 Years                                <input type="checkbox"/> 20+ Years</p> <p>7. How would you rank your woodworking skills?</p> <p><input type="checkbox"/> Simple                                        <input type="checkbox"/> Advanced<br/> <input type="checkbox"/> Intermediate                                <input type="checkbox"/> Master Craftsman</p> <p>8. What stationary woodworking tools do you own? Check all that apply.</p> <p><input type="checkbox"/> Air Compressor                          <input type="checkbox"/> Panel Saw<br/> <input type="checkbox"/> Band Saw                                    <input type="checkbox"/> Planer<br/> <input type="checkbox"/> Drill Press                                 <input type="checkbox"/> Power Feeder<br/> <input type="checkbox"/> Drum Sander                               <input type="checkbox"/> Radial Arm Saw<br/> <input type="checkbox"/> Dust Collector                            <input type="checkbox"/> Shaper<br/> <input type="checkbox"/> Horizontal Boring Machine            <input type="checkbox"/> Spindle Sander<br/> <input type="checkbox"/> Jointer                                      <input type="checkbox"/> Table Saw<br/> <input type="checkbox"/> Lathe                                         <input type="checkbox"/> Vacuum Veneer Press<br/> <input type="checkbox"/> Mortiser                                    <input type="checkbox"/> Wide Belt Sander<br/> <input type="checkbox"/> Other _____</p> | <p>9. How many of your woodworking machines are Grizzly? _____</p> <p>10. Which benchtop tools do you own? Check all that apply.</p> <p><input type="checkbox"/> 1" x 42" Belt Sander                      <input type="checkbox"/> 6" - 8" Grinder<br/> <input type="checkbox"/> 5" - 8" Drill Press                        <input type="checkbox"/> Mini Lathe<br/> <input type="checkbox"/> 8" Table Saw                               <input type="checkbox"/> 10" - 12" Thickness Planer<br/> <input type="checkbox"/> 8" - 10" Bandsaw                        <input type="checkbox"/> Scroll Saw<br/> <input type="checkbox"/> Disc / Belt Sander                        <input type="checkbox"/> Spindle / Belt Sander<br/> <input type="checkbox"/> Mini Jointer<br/> <input type="checkbox"/> Other _____</p> <p>11. How many of the machines checked above are Grizzly? _____</p> <p>12. Which portable, hand held power tools do you own? Check all that apply.</p> <p>_____</p> <p>_____</p> <p>_____</p> <p>13. What machines and/or supplies would you like Grizzly Industrial to carry?</p> <p>_____</p> <p>_____</p> <p>_____</p> <p>14. What new accessories would you like Grizzly Industrial to carry?</p> <p><input type="checkbox"/> Builders Hardware                      <input type="checkbox"/> Hand Tools<br/> <input type="checkbox"/> Fasteners                                 <input type="checkbox"/> Wood Components<br/> <input type="checkbox"/> Other _____</p> <p>15. What other companies do you purchase your tools and supplies from?</p> <p>_____</p> <p>_____</p> <p>16. Do you think your purchase represents good value?</p> <p><input type="checkbox"/> Yes    <input type="checkbox"/> No</p> <p>17. Would you recommend Grizzly Industrial to a friend?</p> <p><input type="checkbox"/> Yes    <input type="checkbox"/> No</p> <p>18. Would you allow us to use your name as a reference for Grizzly customers in your area? <b>Note: We never use names more than three times.</b></p> <p><input type="checkbox"/> Yes    <input type="checkbox"/> No</p> <p>19. Comments: _____</p> <p>_____</p> <p>_____</p> <p>_____</p> <p>_____</p> |
|--|---|

CUT ALONG DOTTED LINE

FOLD ALONG DOTTED LINE

\_\_\_\_\_  
\_\_\_\_\_  
\_\_\_\_\_



Place  
Stamp  
Here



**GRIZZLY INDUSTRIAL, INC.**  
**P.O. BOX 2069**  
**BELLINGHAM, WA 98227-2069**



FOLD ALONG DOTTED LINE

Send a Grizzly Catalog to a friend:

Name \_\_\_\_\_  
Street \_\_\_\_\_  
City \_\_\_\_\_ State \_\_\_\_\_ Zip \_\_\_\_\_

TAPE ALONG EDGES--PLEASE DO NOT STAPLE



# *grizzly.com*

**TOOL WEBSITE**

**Buy Direct and Save with Grizzly® – Trusted, Proven and a Great Value!**

*Visit Our Website Today And Discover Why  
Grizzly® Is The Industry Leader!*

- SECURE ORDERING
- ORDERS SHIPPED WITHIN 24 HOURS
- E-MAIL RESPONSE WITHIN ONE HOUR

**-OR-**

Call Today For A **FREE**  
Full Color Catalog

**1-800-523-4777**



## Free Manuals Download Website

<http://myh66.com>

<http://usermanuals.us>

<http://www.somanuals.com>

<http://www.4manuals.cc>

<http://www.manual-lib.com>

<http://www.404manual.com>

<http://www.luxmanual.com>

<http://aubethermostatmanual.com>

Golf course search by state

<http://golfingnear.com>

Email search by domain

<http://emailbydomain.com>

Auto manuals search

<http://auto.somanuals.com>

TV manuals search

<http://tv.somanuals.com>