

Grizzly

Industrial, Inc.®

BASS COMBO

MODEL H5524

INSTRUCTION SHEET



Features:

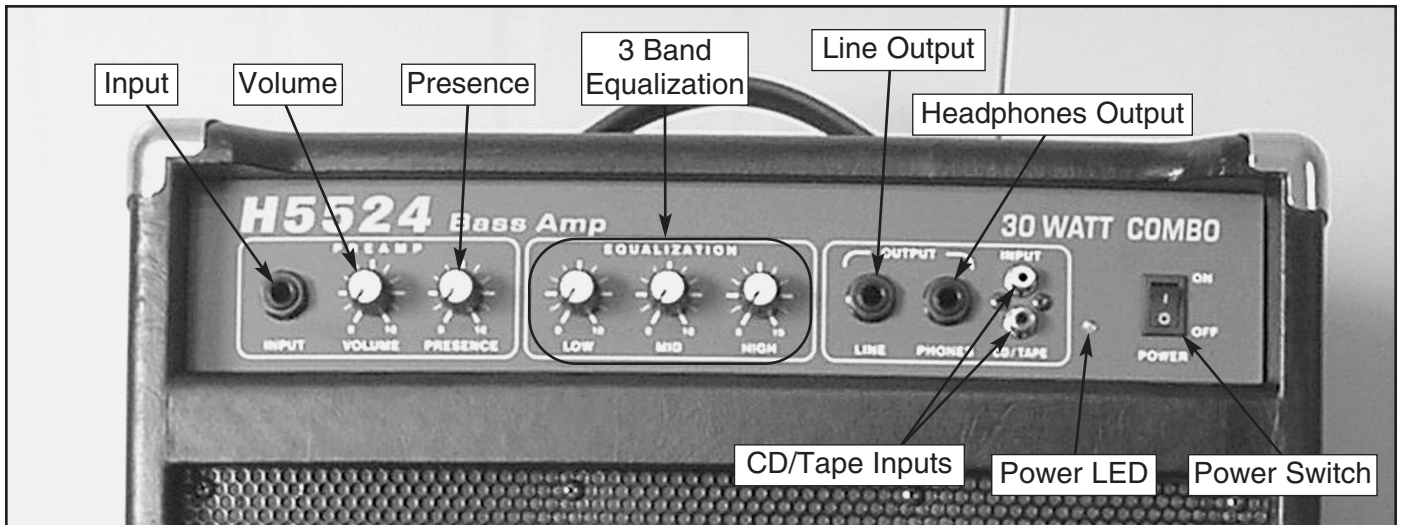
- 30 Watt Power Amp
- Passive 3 Band EQ
- Presence Control
- 10" Loudspeaker
- Line Output
- Headphone Jack
- CD Input
- Metal Speaker Grill



COPYRIGHT © OCTOBER, 2003 BY GRIZZLY INDUSTRIAL, INC.
**WARNING: NO PORTION OF THIS MANUAL MAY BE REPRODUCED IN ANY SHAPE
OR FORM WITHOUT THE WRITTEN APPROVAL OF GRIZZLY INDUSTRIAL, INC.**
PRINTED IN KOREA FOR CUSTOMER SERVICE, CALL 1-570-546-9663

ONLINE MANUAL DISCLAIMER

THE INFORMATION IN THIS MANUAL REPRESENTS THE CONFIGURATION OF THE MACHINE AS IT IS CURRENTLY BEING SHIPPED. THE MACHINE CONFIGURATION CAN CHANGE AS PRODUCT IMPROVEMENTS ARE INCORPORATED. IF YOU OWN AN EARLIER VERSION OF THE MACHINE, THIS MANUAL MAY NOT EXACTLY DEPICT YOUR MACHINE. CONTACT CUSTOMER SERVICE IF YOU HAVE ANY QUESTIONS ABOUT DIFFERENCES. PREVIOUS VERSIONS ARE NOT AVAILABLE ONLINE.



INPUT—Connect your guitar here, using a shielded instrument cable with a ¼" jack.

VOLUME—This knob controls the pre-gain level.

PRESENCE—This circuit provides a gradual boost in the upper frequency output for better articulation. The boost begins at 2 KHz and provides a maximum output increase of approximately 10 dB.

3 BAND EQUALIZATION—The main equalization of the Model H5524 is a classic 3-band passive network. All pass (no band cut) is attained with the controls in the full clockwise position—unlike active controls which exhibit a “flat” setting at the 12 o’clock positions.

LINE OUTPUT—A line level output is provided for sending a signal from the preamp section to a mixing console for live performance or recording purposes.

HEADPHONES OUTPUT—For connection to almost any headphone with a ¼" jack.

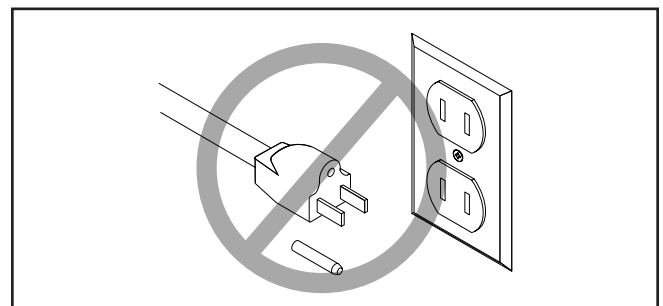
CD/TAPE INPUTS—These line level inputs allow the use of a CD or tape player for practice sessions.

POWER LED—The power LED illuminates when the power is *ON*.

POWER SWITCH—Turns power *ON* and *OFF*.

Caring For Your Amplifier

- DO NOT remove the grounding prong to fit the plug into a two-pronged outlet!
- To keep the amplifier working properly, DO NOT expose it to rain or moisture.
- DO NOT pull or lift the amplifier by the power cord.
- UNPLUG the amplifier before cleaning, and only clean with a damp cloth (no chemicals).



⚠ CAUTION

SHOCK HAZARD! The amplifier must have a ground prong in the plug to help ensure that it is grounded. DO NOT remove this prong to fit the plug into a two-pronged outlet!

Free Manuals Download Website

<http://myh66.com>

<http://usermanuals.us>

<http://www.somanuals.com>

<http://www.4manuals.cc>

<http://www.manual-lib.com>

<http://www.404manual.com>

<http://www.luxmanual.com>

<http://aubethermostatmanual.com>

Golf course search by state

<http://golfingnear.com>

Email search by domain

<http://emailbydomain.com>

Auto manuals search

<http://auto.somanuals.com>

TV manuals search

<http://tv.somanuals.com>