



MODEL T10035/T10036 STEEL/ALUMINUM JACKS INSTRUCTION SHEET

T10035 Specifications

Maximum Lifting Capacity3,000 lbs.
Lifting Range3½"–15½"
Weight35 lbs.

T10036 Specifications

Maximum Lifting Capacity5,000 lbs.
Lifting Range4"–18½"
Weight58 lbs.

Assembly

Attach the upper handle to the lower handle so that the release button clicks. Insert the handle into the handle socket. Tighten the knurled thumb screw.

Operation

To raise the saddle:

Turn the handle clockwise as far as it will turn and pump the handle up and down. Turning the handle clockwise will close the release valve.

To lower the saddle:

Slowly turn the jack handle counterclockwise.

If you need help with the Model T10035 or T10036, call our Technical Support line at: (570) 546-9663.

WARNING

To reduce the risk of death, serious personal injury or property damage when using these jacks:

- **DO NOT** overload this jack beyond its rated capacity. Overloading may result in personal injury or property damage.
- **ALWAYS** support the vehicle with appropriately rated support stands before working under it.
- **DO NOT** attempt to move the vehicle while the jack is in use.
- **ONLY** use this jack on a hard level surface capable of sustaining the load being supported.
- Always make sure that vehicle load points are centered in the saddle to maintain proper balance and stability.
- **DO NOT** use jack if it begins leaking fluid or if it sinks when placed under load. These are indications that the jack needs to be immediately serviced.
- **Only** use the jack at appropriate areas of the vehicle that can safely support the vehicle's weight.

COPYRIGHT © DECEMBER, 2007 BY GRIZZLY INDUSTRIAL, INC.
**WARNING: NO PORTION OF THIS MANUAL MAY BE REPRODUCED IN ANY SHAPE
OR FORM WITHOUT THE WRITTEN APPROVAL OF GRIZZLY INDUSTRIAL, INC.**
#JM10101 PRINTED IN CHINA

Maintenance

Keep the hydraulic ram clean and free of any dust, dirt, or foreign debris. Abrasive material stuck to the ram can damage the hydraulic seal when the ram is retracted back into the jack. Regularly wipe the hydraulic ram clean with a lightly oiled rag.

The jack will require hydraulic fluid after long-term use. This will be noticeable if the jack will not reach its maximum height when pumped. Only use a high quality hydraulic fluid.

To add hydraulic fluid:

1. Completely lower the jack saddle.
2. Remove the fill plug shown in **Figure 1**.

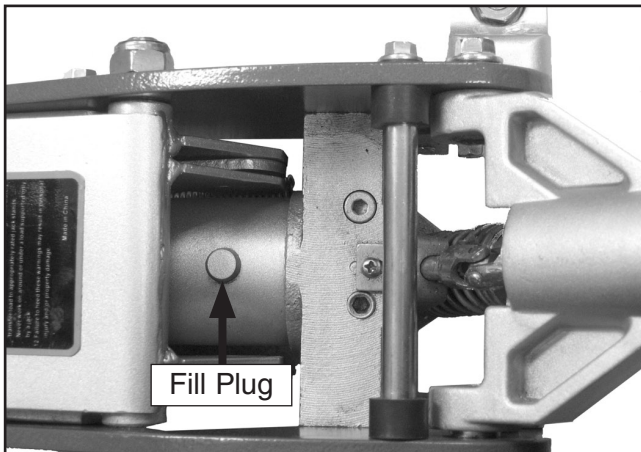


Figure 1. Fill plug.

3. Add fluid until it reaches the top of the fill plug hole.
4. Replace the fill plug.
5. Test the operation of the jack by pumping it up to the maximum height and applying a load to the saddle. The jack should hold the weight of the load without a sinking or spongy feeling.

—If the jack did not perform properly, then air may need to be bled from the pump system.

Bleeding the Air

If the jack becomes spongy or will not rise when pumped, then air bubbles may be in the hydraulic system. These air bubbles must be bled from the hydraulic fluid before the jack can be safely operated.

To remove the air bubbles:

1. Rotate the handle counterclockwise five full turns.
2. Place a shop rag around and under the oil fill hole.
3. Remove the fill plug.
4. Pump the jack handle rapidly to force the air bubbles out through the fill hole. When the air bubbles stop coming out, add fluid as needed, then reinstall the fill plug.

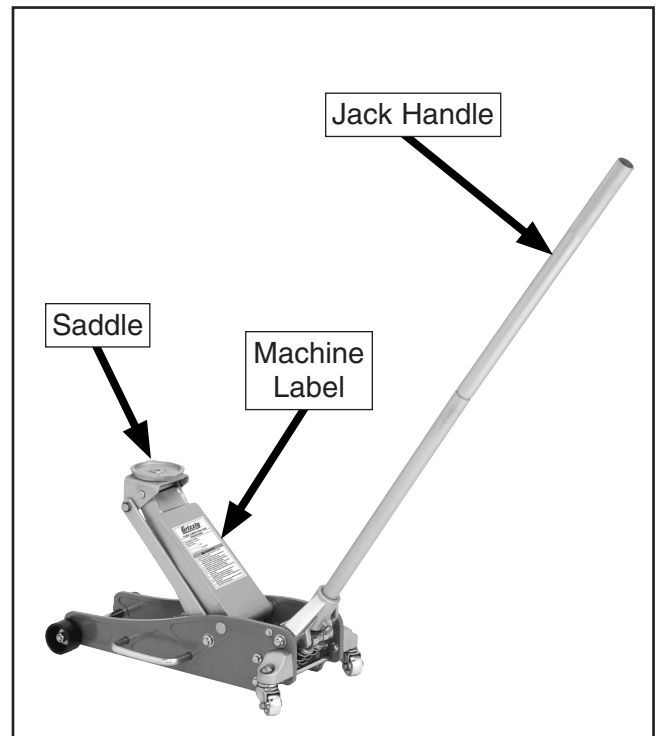
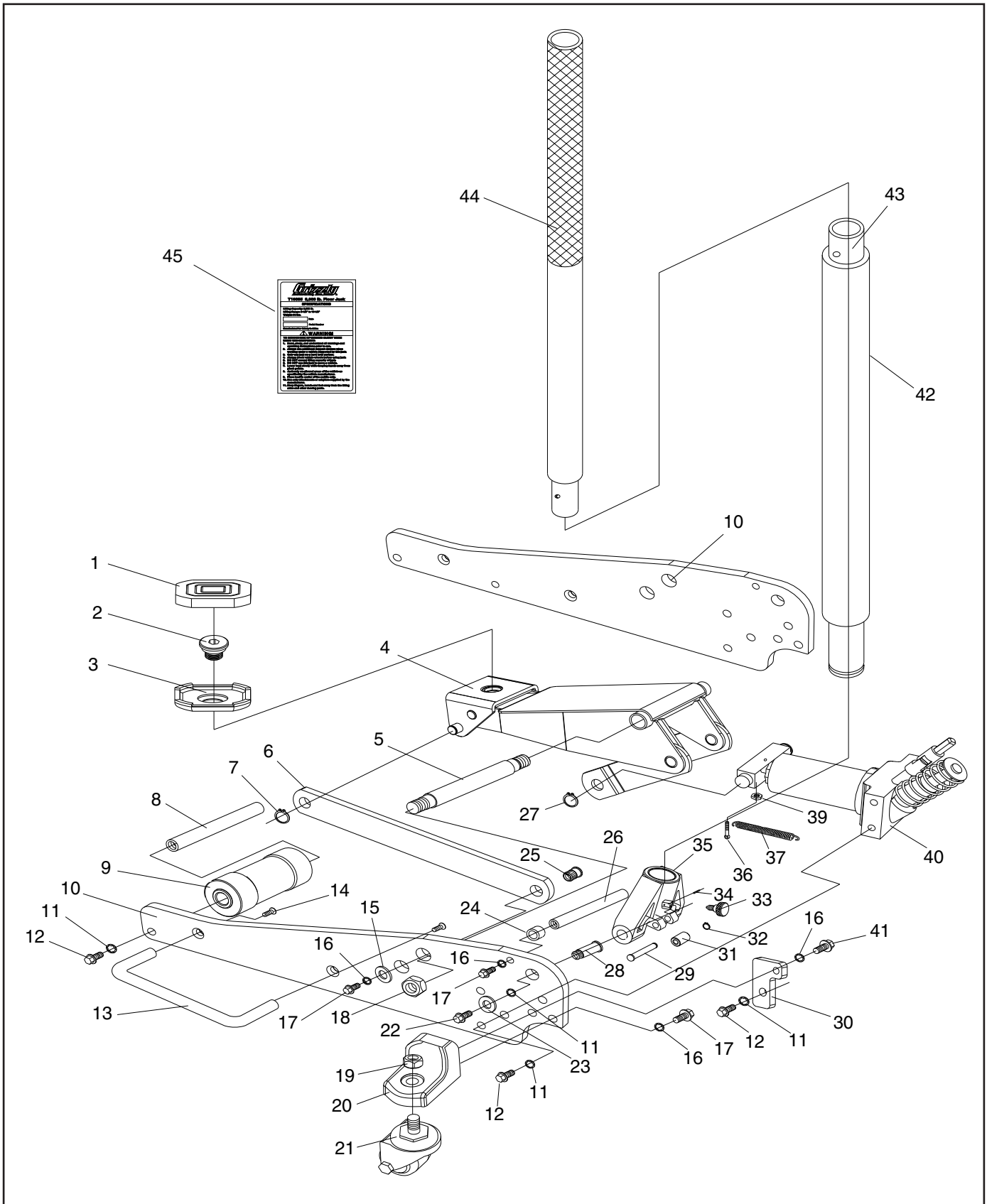
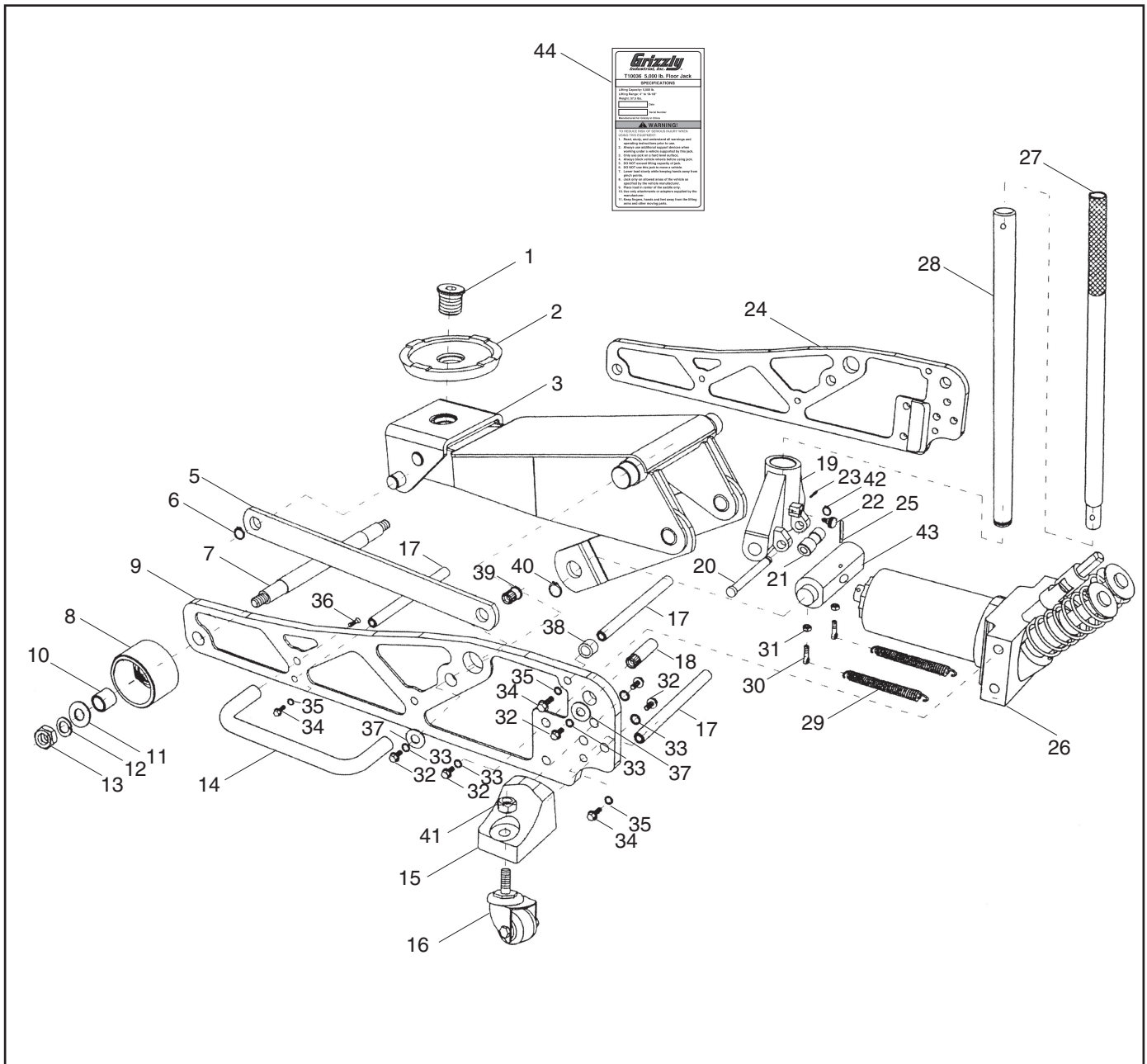


Figure 2. Identification.

T10035 Main Parts Breakdown



T10036 Main Parts Breakdown



⚠️ WARNING

The machine label warns about hazards and ways to prevent injury. The owner of the jack **MUST** maintain the original location and readability of the label. If the label is removed or becomes unreadable, contact Grizzly at (800) 523-4777 or www.grizzly.com to order a new label.

T10035 Main Parts List

REF	PART #	DESCRIPTION
1	PT10035001	RUBBER PAD
2	PT10035002	SADDLE AXIS
3	PT10035003	SADDLE
4	PT10035004	LIFTING ARM
5	PT10035005	LIFT ARM AXIS
6	PT10035006	LINKAGE (LONG)
7	PR03M	EXT RETAINING RING 12MM
8	PT10035008	FRONT WHEEL AXIS
9	PT10035009	FRONT WHEEL ASSEMBLY
10	PT10035010	WALL PLATE
11	PTLW16M	INT TOOTH WASHER 10MM
12	PFB24M	FLANGE BOLT M10-1.5 X 16
13	PT10035013	SIDE HANDLE
14	PFH59M	FLAT HD ALLEN SCR M6-1 X 20
15	PW01M	FLAT WASHER 8MM
16	PTLW03M	INT TOOTH WASHER 8MM
17	PFB18M	FLANGE BOLT M8-1.25 X 20
18	PLN11M	LOCK NUT M14-2
19	PN02M	HEX NUT M10-1.5
20	PT10035020	REAR CASTER BRACKET
21	PT10035021	REAR CASTER ASSEMBLY
22	PFB23M	FLANGE BOLT M10-1.5 X 20

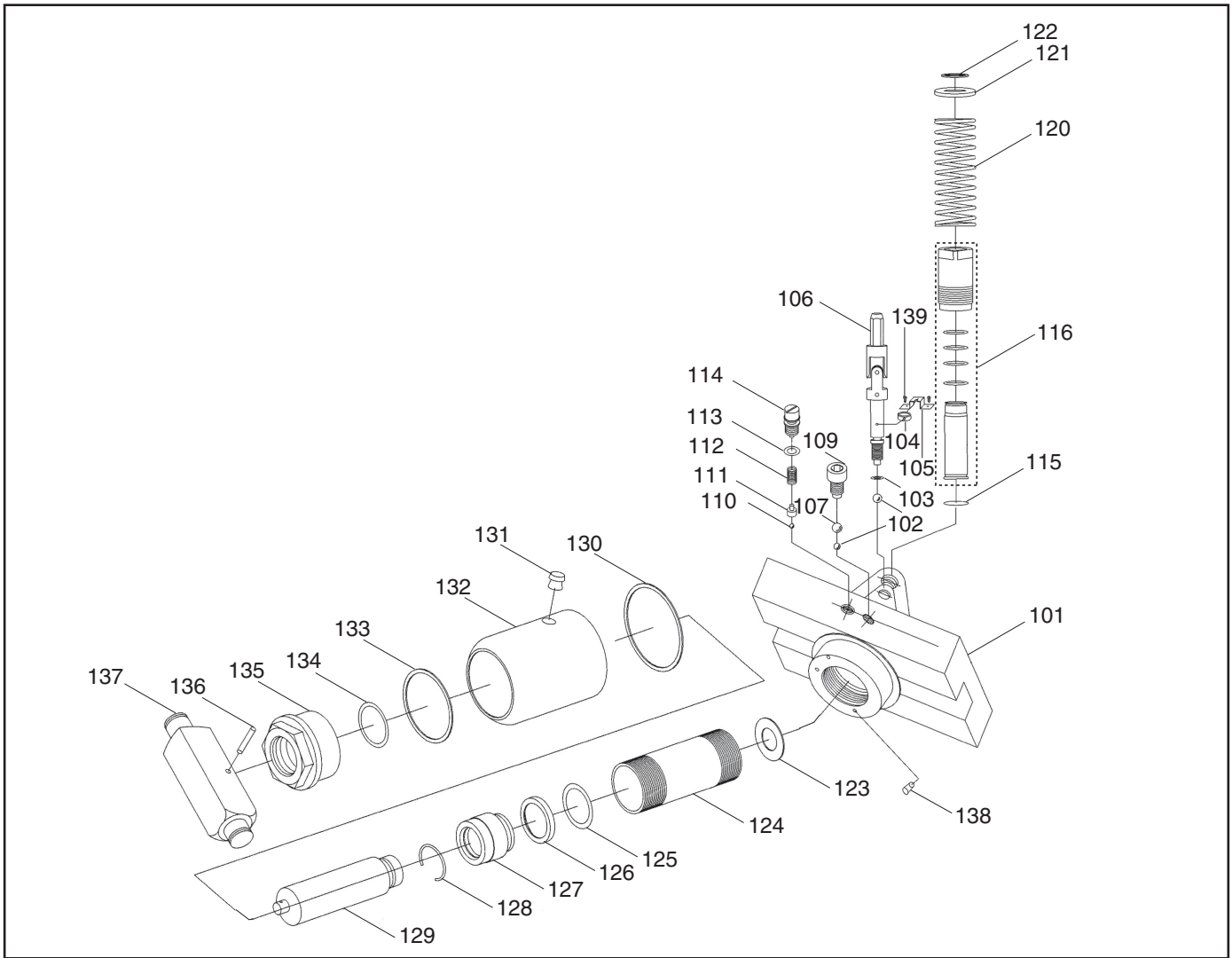
REF	PART #	DESCRIPTION
23	PW04M	FLAT WASHER 10MM
24	PT10035024	SCREW BUSHING
25	PT10035025	LINKAGE SCREW
26	PT10035026	STRENGTHEN ROD
27	PR18M	EXT RETAINING RING 17MM
28	PT10035028	HANDLE YOKE AXIS PIN
29	PT10035029	PRESS WHEEL SHAFT
30	PT10035030	BRACKET
31	PT10035031	PRESS ROLL
32	PEC03M	E-CLIP 10MM
33	PT10035033	KNURLED THUMB SCREW
34	PRP37M	ROLL PIN 3 X 14
35	PT10035035	HANDLE SOCKET
36	PT10035036	EYEBOLT M6-1 X 40
37	PT10035037	EXTENSION SPRING
39	PN01M	HEX NUT M6-1
40	PT10035040	HYDRAULIC UNIT
41	PFB25M	FLANGE BOLT M8-1.25 X 25
42	PT10035042	SPONGE SLEEVE
43	PT10035043	LOWER HANDLE
44	PT10035044	UPPER HANDLE
45	PT10035045	MACHINE ID LABEL

T10036 Main Parts List

REF	PART #	DESCRIPTION
1	PT10036001	SADDLE AXIS
2	PT10036002	SADDLE
3	PT10036003	LIFTING ARM ASSEMBLY
5	PT10036005	LINK ROD
6	PR06M	EXT RETAINING RING 16MM
7	PT10036007	FRONT WHEEL AXIS
8	PT10036008	FRONT WHEEL
9	PT10036009	RIGHT WALL PLATE
10	PT10036010	FRONT WHEEL SLEEVE
11	PW06M	FLAT WASHER 12MM
12	PLW05M	LOCK WASHER 12MM
13	PN09M	HEX NUT M12-1.75
14	PT10036014	SIDE HANDLE
15	PT10036015	REAR CASTER BRACKET
16	PT10036016	REAR CASTER ASSEMBLY
17	PT10036017	LIMITATION ROD
18	PT10036018	SOCKET SHAFT
19	PT10036019	HANDLE SOCKET
20	PT10036020	PRESS WHEEL SHAFT
21	PT10036021	PRESS ROLL
22	PT10036022	KNURLED THUMB SCREW
23	PRP37M	ROLL PIN 3 X 14

REF	PART #	DESCRIPTION
24	PT10036024	LEFT WALL PLATE
25	PT10036025	COTTER PIN 4 X 50
26	PT10036026	HYDRAULIC UNIT
27	PT10036027	UPPER HANDLE
28	PT10036028	LOWER HANDLE
29	PT10036029	EXTENSION SPRING
30	PT10036030	EYEBOLT M6-1 X 25
31	PN01M	HEX NUT M6-1
32	PFB26M	FLANGE BOLT M10-1.5 X 25
33	PTLW16M	INT TOOTH WASHER 10MM
34	PFB18M	FLANGE BOLT M8-1.25 X 20
35	PTLW03M	INT TOOTH WASHER 8MM
36	PFH60M	FLAT HD ALLEN SCR M8-1.25 X 20
37	PW04M	FLAT WASHER 10MM
38	PT10036038	RUBBER PROTECTIVE
39	PT10036039	LINK BOLT
40	PR09M	EXT RETAINING RING 20MM
41	PLN09M	LOCK NUT M12-1.75
42	PR03M	EXT RETAINING RING 12MM
43	PT10036043	RAM LINK
44	PT10036044	MACHINE ID LABEL

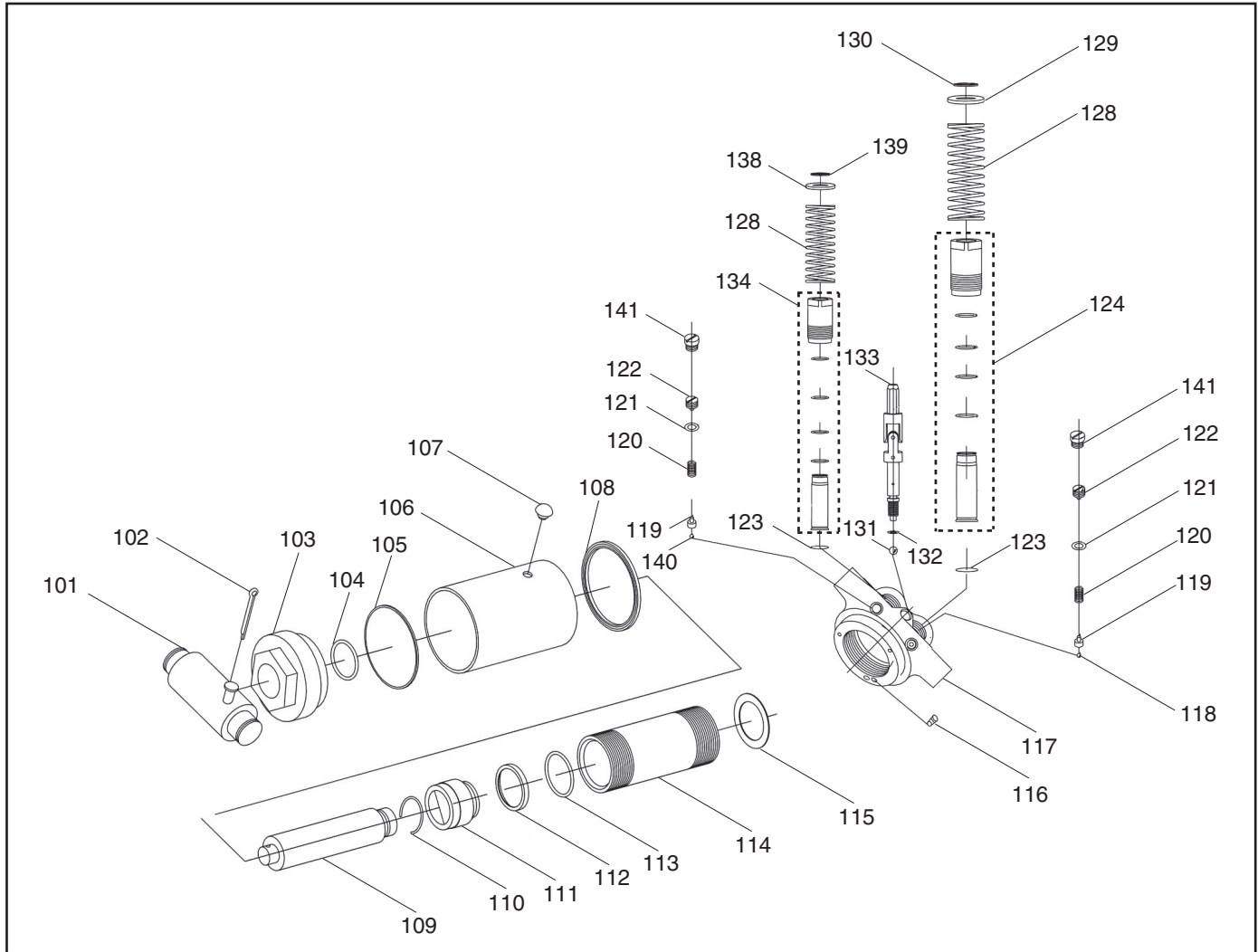
T10035 Hydraulic Pump Parts Breakdown



REF	PART #	DESCRIPTION
101	PT10035101	BASE
102	PT10035102	STEEL BALL 6
103	PORP006	O-RING 5.8 X 1.9 P6
104	PT10035104	COLLAR
105	PT10035105	COLLAR PIECE
106	PT10035106	RELEASE VALVE ASSEMBLY
107	PT10035107	STEEL BALL 8
109	PT10035109	SPECIAL SCREW M10-1.5 X 30
110	PT10035110	STEEL BALL 4
111	PT10035111	BALL HOUSING
112	PT10035112	ADJUSTABLE SPRING
113	PORP008	O-RING 7.8 X 1.9 P8
114	PT10035114	SPECIAL SCREW M10-1 X 4
115	PW27MM	FLAT WASHER 17MM
116	PT10035116	PISTON ASSEMBLY
120	PT10035120	COMPRESSION SPRING
121	PT10035121	PISTON COVER
122	PR05M	EXT RETAINING RING 15MM

REF	PART #	DESCRIPTION
123	PW26MM	FLAT WASHER 22MM
124	PT10035124	CYLINDER
125	PORP022-4	O-RING 22.1 X 3.5 P22.4
126	PT10035126	CUP PACKING
127	PT10035127	VALVE
128	PT10035128	C-CLIP 20MM
129	PT10035129	HYDRAULIC RAM
130	PT10035130	SEAL
131	PT10035131	PLUNGER CAP
132	PT10035132	OIL TANK
133	PT10035133	SEAL
134	POR0022	O-RING 22.4 X 3.1
135	PT10035135	TOP NUT
136	PRP56M	ROLL PIN 4 X 25
137	PT10035137	BLOCK LINKAGE
138	PT10035138	FILTER SCREEN
139	PS19M	PHLP HD SCR M5-.8 X 6

T10036 Hydraulic Pump Parts Breakdown



REF	PART #	DESCRIPTION
101	PT10036101	BLOCK LINKAGE
102	PT10036102	COTTER PIN
103	PT10036103	TOP NUT
104	PORP029-5	O-RING 29.2 X 3.5 P29.5
105	PT10036105	SEAL
106	PT10036106	OIL TANK
107	PT10036107	PLUNGER CAP
108	PT10036108	SEAL
109	PT10036109	HYDRAULIC RAM
110	PT10035128	C-CLIP 20MM
111	PT10036111	VALVE
112	PT10036112	CUP PACKING
113	PORP028	O-RING 27.7 X 3.5 P28
114	PT10036114	CYLINDER
115	PW25MM	FLAT WASHER 24MM
116	PT10036116	FILTER SCREEN
117	PT10036117	BASE
118	PT10036118	STEEL BALL 4

REF	PART #	DESCRIPTION
119	PT10036119	BALL PLUNGER
120	PT10036120	ADJUSTABLE SPRING
121	PORP007	O-RING 6.8 X 1.9 P7
122	PT10036122	SPECIAL SCREW
123	PT10036123	SPECIAL WASHER 9MM
124	PT10036124	LARGE PISTON ASSEMBLY
128	PT10036128	COMPRESSION SPRING
129	PT10036129	LARGE PISTON COVER
130	PRO9M	EXT RETAINING RING 20MM
131	PT10036131	STEEL BALL 6
132	POR0063	O-RING 6.6 X 3
133	PT10036133	RELEASE VALVE ASSEMBLY
134	PT10036134	SMALL PISTON ASSEMBLY
138	PT10036138	SMALL PISTON COVER
139	PRO6M	EXT RETAINING RING 16MM
140	PT10036140	STEEL BALL 5.5
141	PT10036141	SPECIAL SCREW

grizzly.com

TOOL WEBSITE

Buy Direct and Save with Grizzly® – Trusted, Proven and a Great Value!

*Visit Our Website Today And Discover
Why Grizzly® Is The Industry Leader!*

- SECURE ORDERING
- ORDERS SHIPPED WITHIN 24 HOURS
- E-MAIL RESPONSE WITHIN ONE HOUR

-OR-

Call Today For A **FREE**
Full Color Catalog

1-800-523-4777



Free Manuals Download Website

<http://myh66.com>

<http://usermanuals.us>

<http://www.somanuals.com>

<http://www.4manuals.cc>

<http://www.manual-lib.com>

<http://www.404manual.com>

<http://www.luxmanual.com>

<http://aubethermostatmanual.com>

Golf course search by state

<http://golfingnear.com>

Email search by domain

<http://emailbydomain.com>

Auto manuals search

<http://auto.somanuals.com>

TV manuals search

<http://tv.somanuals.com>