



MODEL H6287-H6289 PALLET JACKS INSTRUCTIONS

Specifications

Model	H6287	H6288	H6289
Capacity	1,000 Lbs.	4,000 Lbs.	5000 Lbs.
Overall Fork Dimensions	15"W x 31"L	27"W x 47½"L	27"W x 48"W
Individual Fork Width	4"	6"	6⅜"
Minimum Fork Height	2½"	3"	3"
Maximum Fork Height	6"	7½"	7"

Inventory (Figure 1)

Qty

- A. Fork Frame..... 1
- B. Handle..... 1
- C. Roll Pin 5 x 35mm
(Model H6287/H6288, Not Shown)..... 1
- D. O-Ring Replacement Kit
(Model H6289, Not Shown)..... 1

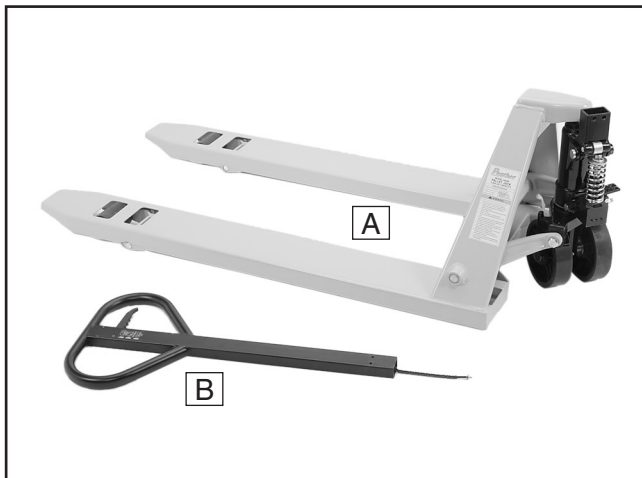


Figure 1. Pallet jack inventory (Model H6289 shown).

Recommended Tools

- Needle Nose Pliers..... 1
- Hammer..... 1
- Standard Screwdriver..... 1
- Wrench or Socket 10mm (Model H6287-88)..... 1
- Wrench or Socket 13mm (Model H6289)..... 1
- Wrench or Socket 16mm (Model H6289)..... 1
- Wrench or Socket 24mm (Model H6289)..... 1

Assembly (Model H6287/H6288)

1. Remove the cotter pin shown in **Figure 2**, then slide the alignment pin all the way out of the right side of the bracket.

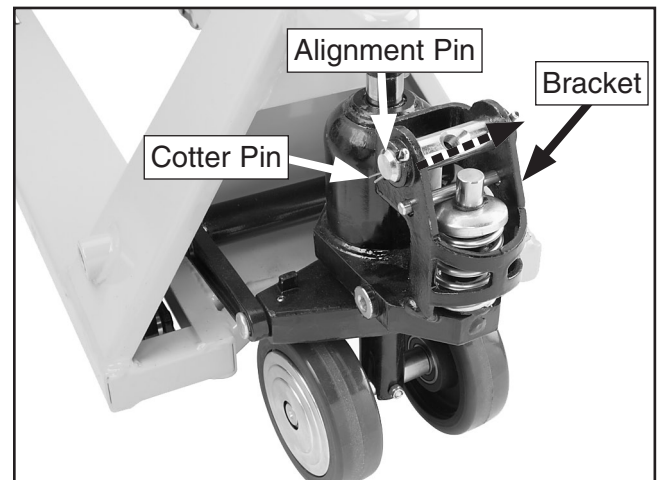


Figure 2. Cotter pin location.

2. Pull the chain out of the bottom of the handle.

COPYRIGHT © JANUARY, 2009 BY GRIZZLY INDUSTRIAL, INC. REVISED AUGUST, 2009 (BL)

WARNING: NO PORTION OF THIS MANUAL MAY BE REPRODUCED IN ANY SHAPE OR FORM WITHOUT THE WRITTEN APPROVAL OF GRIZZLY INDUSTRIAL, INC.

#BL11348 PRINTED IN CHINA

3. While holding the handle vertically and grasping the chain, insert the handle into the bracket, align the mounting holes, then insert the alignment pin, as shown in **Figure 3**.

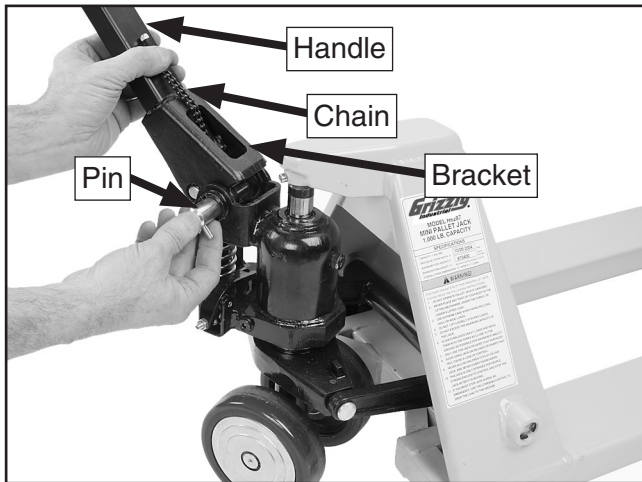


Figure 3. Installing handle, Model H6287.



4. To secure the alignment pin, use a hammer to drive the tapered end of the included roll pin through the hole on the left side of the alignment pin. The roll pin should protrude an equal amount on both sides of the alignment pin.
5. Thread the stud and lock nut on the end of the chain through the hole in the center of the alignment pin, as shown in **Figure 4**.

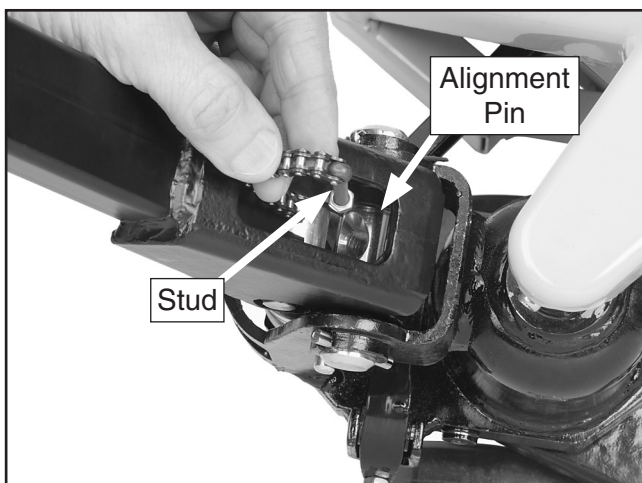


Figure 4. Threading stud and chain into alignment pin.

6. Raise the lever, then insert the stud and lock nut into the groove on the lever, as shown in **Figure 5**.

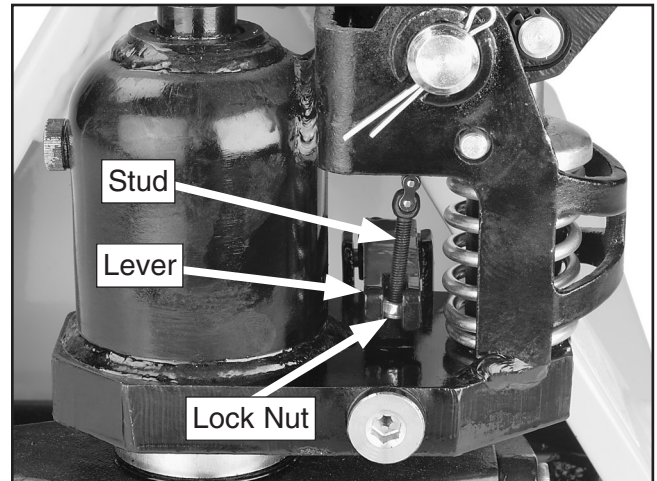


Figure 5. Stud and lock nut installed on lever.

Assembly (Model H6289)

1. Remove the four hex bolts, lock washers, and flat washers from the end of the handle.
2. While holding the handle vertically above the socket on the base, insert the stud and lock nut on the end of the chain through the hole in the center of the alignment pin, as shown in **Figure 6**.

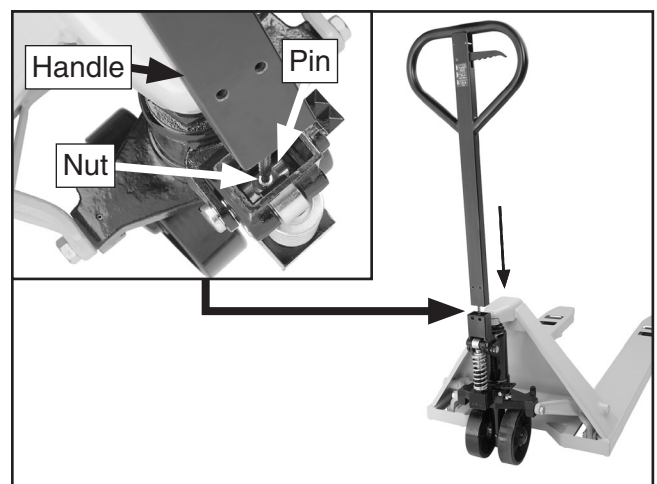


Figure 6. Installing handle into socket, and inserting chain into alignment pin (inset).

3. Slide the handle into the socket, align the mounting holes, then secure the handle with the four hex bolts, lock washers, and flat washers you removed in **Step 1**.



- Lift the foot pedal (see **Figure 7**), then slide the stud and lock nut into the groove on the pedal.

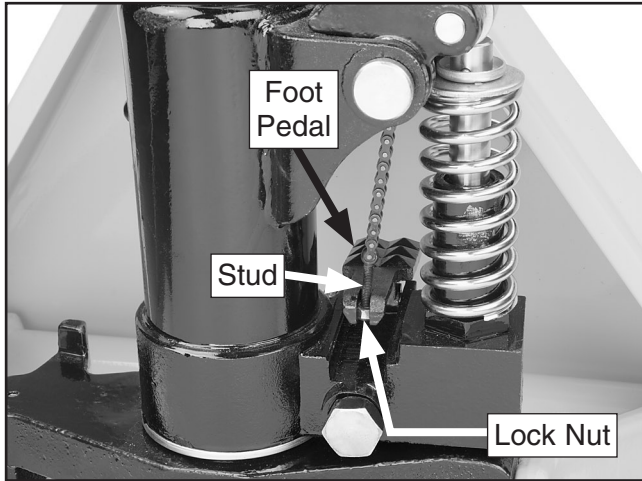


Figure 7. Stud and nut installed into foot pedal.

Operation

⚠️ WARNING

To reduce the risk of serious personal injury when using this machine:

- Do not operate the pallet jack if it is damaged.
- Never place any part of your body in the lifting mechanism, under the forks, or under a lifted load.
- Use extreme care when handling long, high, or wide loads.
- Do not lift loosely stacked loads.
- Do not exceed the maximum capacity of this jack.
- Always balance heavy loads and move them with the forks as close to the ground as possible for maximum stability.
- Only use this jack on hard, flat surfaces.
- Avoid using the jack on inclines or ramps that will cause a loss of control.
- Never allow children to play on this jack, and never carry passengers!
- Only operate this jack if you are strong enough to control and stop the jack when it is moving.
- To stop the jack during an emergency, raise the handle lever and drop the load to the ground.

Depending upon the position of the handle lever, as shown in **Figure 8**, the pallet jack forks can be raised, lowered, or placed in the neutral position.

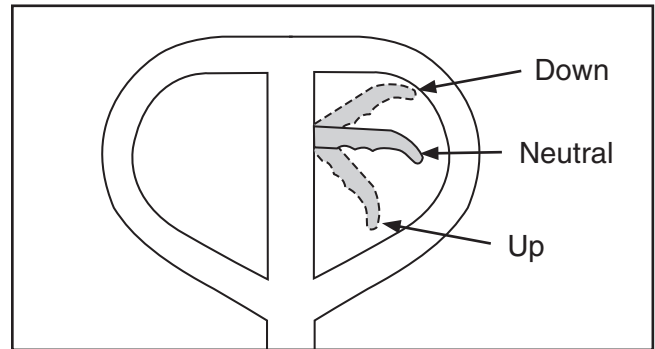


Figure 8. Handle lever positions.

Up Position: Use to raise the pallet jack. Move the lever all the way down until it locks in place, then begin pumping the handle to raise the forks.

Down Position: Use to lower the pallet jack. Pull the lever up slowly to begin lowering the forks. Avoid pulling the lever up quickly or you will drop the load suddenly.

Neutral Position: Place the handle in this position when you are moving a load.

The Model H6289 also features a foot pedal (see **Figure 9**) that, when pressed down, lowers the forks.

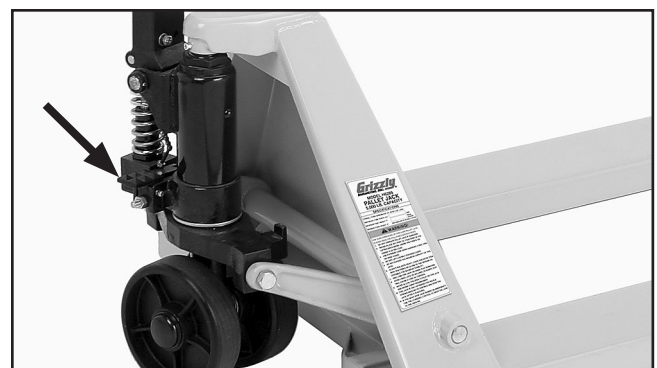


Figure 9. H6289 foot pedal location.

NOTICE

Damage to the pallet jack or the load may result if you drop the forks suddenly, load the forks heavier than the listed capacity, or balance a load unevenly. Lower the forks completely and remove heavy objects if the jack will not be used for a long time.

Adjusting Fork Lowering Speed

The adjustment stud on the right side of the base (see **Figure 10**) can be used to control how quickly the forks lower.

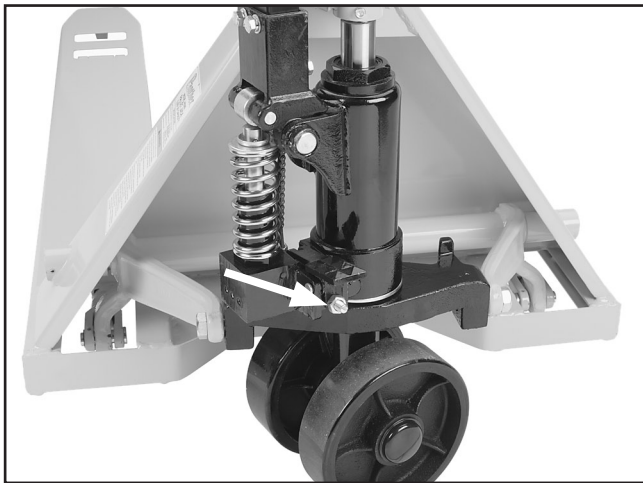


Figure 10. Adjustment stud and lock nut.

To adjust the lowering speed of the forks:

1. Loosen the lock nut on the adjustment stud.
2. Turn the stud counterclockwise to lower the forks more slowly or clockwise to lower the forks more quickly.

—If you notice that the forks immediately lower a little bit after you raise them, turn the stud counterclockwise, then try raising the forks and adjust as needed until they do not sink.

3. Tighten the lock nut when you are satisfied with the adjustment.

Adding/Replacing Hydraulic Oil

Hydraulic oil in the jack cylinder may need to be added or replaced periodically after prolonged use, if it leaks out, or if it gets dirty.

To add hydraulic oil:

1. Lower the forks completely.
2. Remove the fill plug on the Model H6287-88 (see **Figure 11**) or the oil seal on the Model H6289 (see **Figure 12**).

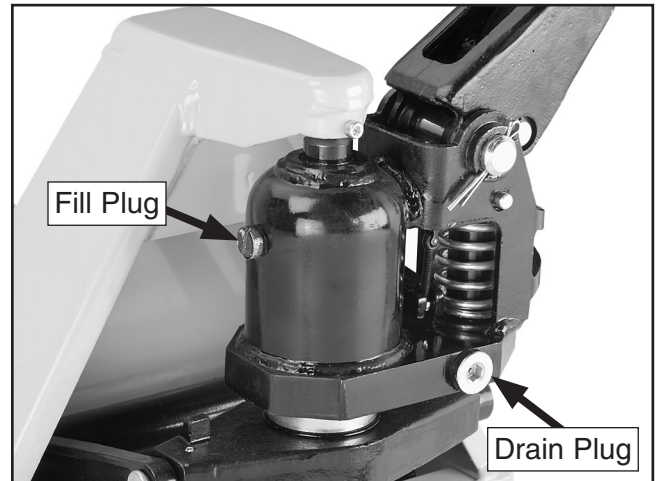


Figure 11. Location of Model H6287/H6288 oil fill and drain plugs.

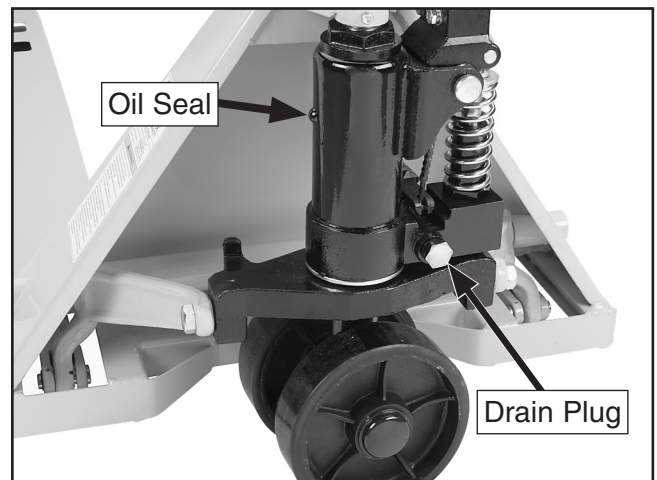


Figure 12. Model H6289 oil seal and drain plug.

3. Add hydraulic oil until the oil level is just below the fill hole.
4. Replace the fill plug or oil seal.

To replace hydraulic oil:

1. Follow **Steps 1-2** in **To Add Hydraulic Oil**.
2. Remove the drain plug, let the oil drain out. Dispose the oil according to local and federal regulations.
3. Reinstall the drain plug, then add hydraulic oil until the oil level is just below the fill hole.
4. Reinstall the fill plug or oil seal.



Lubrication

We recommend adding a few drops of SAE 10W-30 oil every three months to each rotating point shown in **Figures 14 & 13**.



Figure 13. Lubrication locations, Model H6287/H6288.



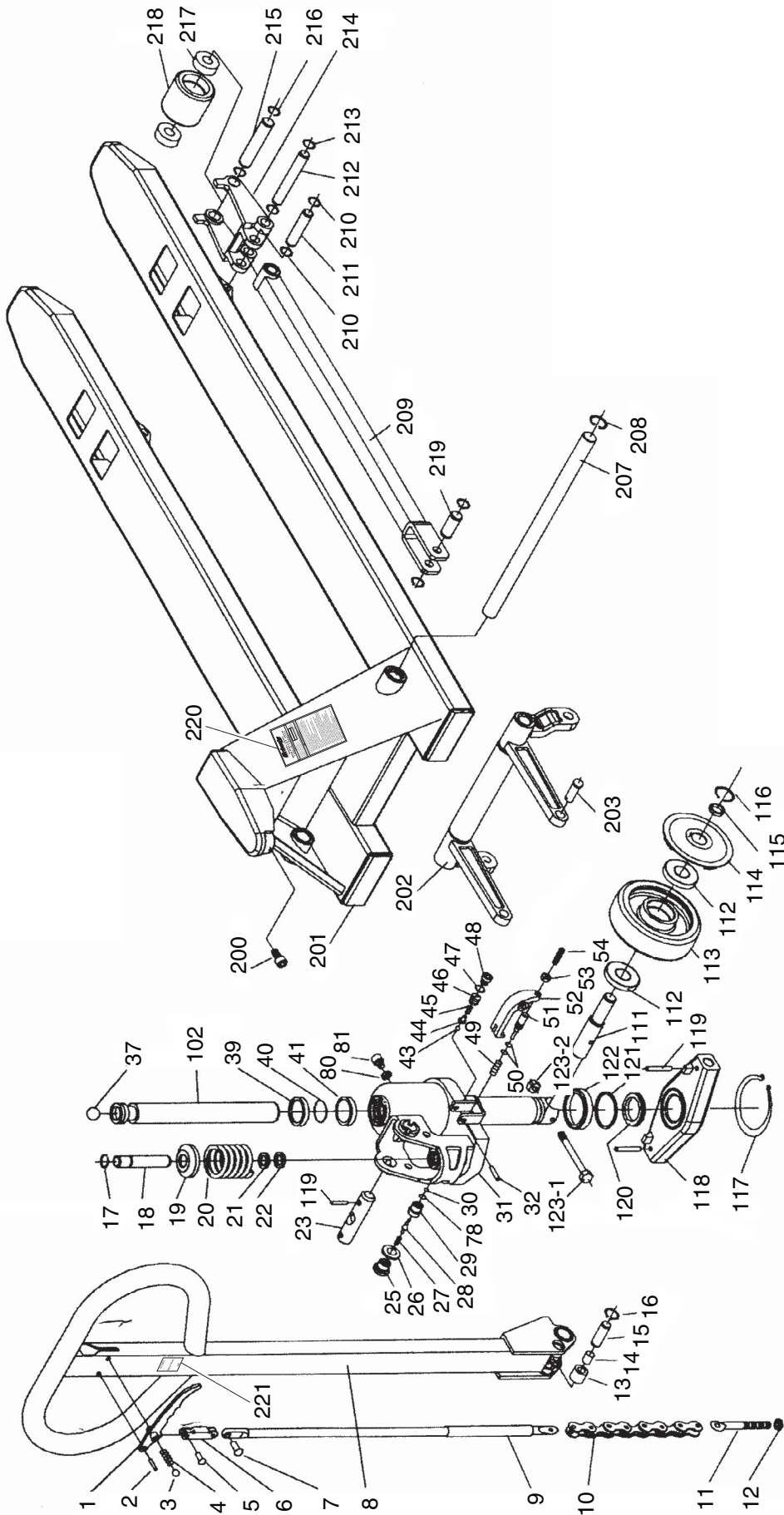
Figure 14. Lubrication locations, Model H6289.

Troubleshooting

Symptom	Possible Cause	Possible Solution
Forks do not lift sufficiently.	1. Hydraulic oil level is low in the jack cylinder.	1. Fill jack cylinder with hydraulic oil. If necessary, remove existing oil and replace with new.
Forks do not lift.	1. Too much hydraulic oil has been added. 2. A rotating part on the jack is stuck or bent. 3. The adjustment stud is too tight or too loose.	1. Pump off extra hydraulic oil. 2. Replace components. 3. Loosen or tighten the adjustment stud.
The forks do not lower after they have been lifted.	1. Components are bent or damaged.	1. Replace damaged components.
The hydraulic oil leaks.	1. Drain plug oil seal is damaged.	1. Replace drain plug oil seal.
Forks lower too slowly.	1. Adjustment stud is too far out.	1. Tighten adjustment stud.
Forks lower too quickly.	1. Adjustment stud is too far in.	1. Loosen adjustment stud.

If you need help with your new pallet jack, call our Tech Support at: (570) 546-9663.

H6287 Parts Breakdown



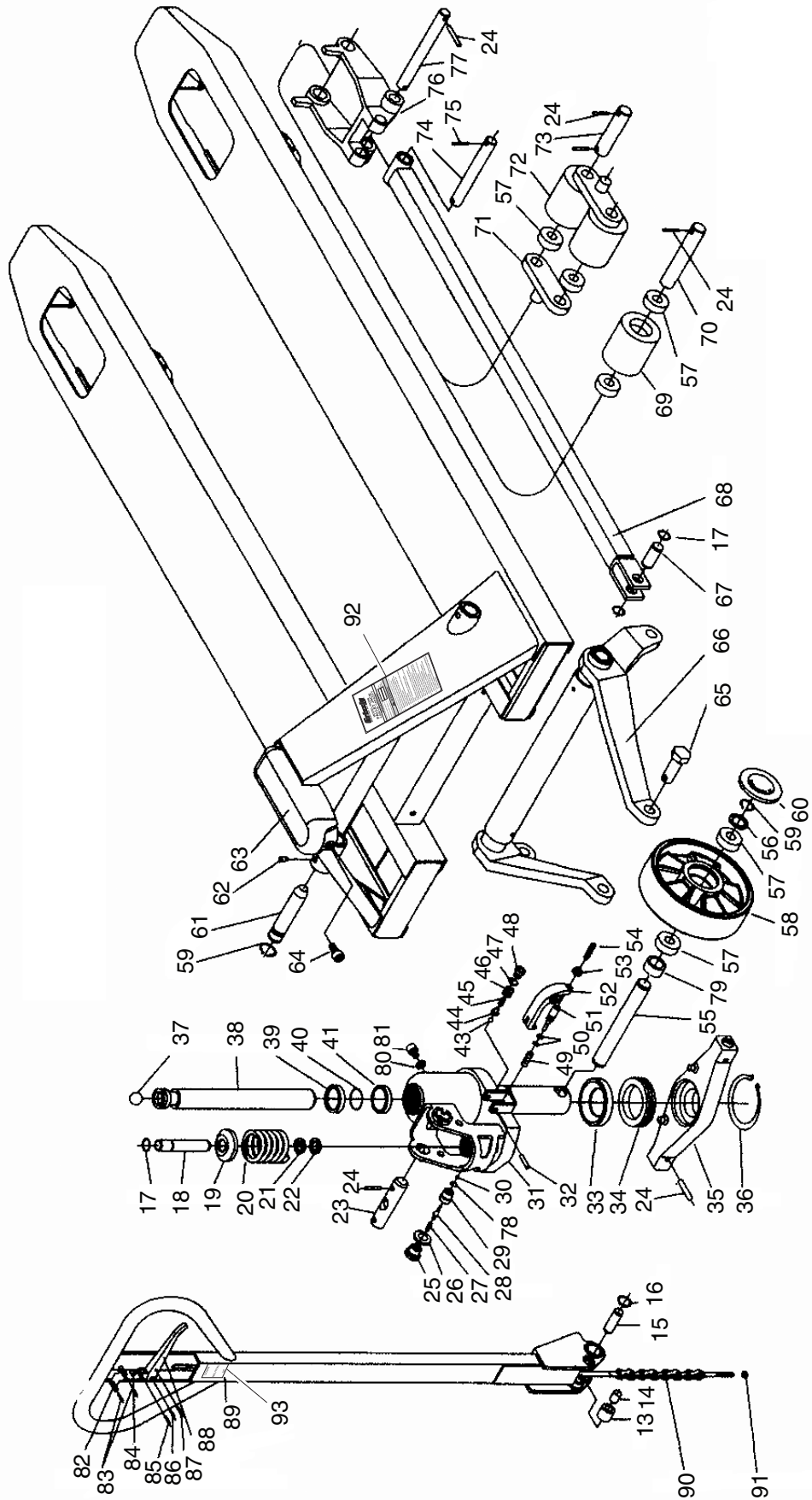
H6287 Parts List

REF	PART #	DESCRIPTION
1	PH6287001	HANDLE
2	PRP93M	ROLL PIN 6 X 25
3	PH6287003	STEEL BALL
4	PH6287004	COMPRESSION SPRING .7 X 4.5 X 27
5	PH6287005	RIVET
6	PH6287006	JOINT BOARD
7	PH6287007	RIVET
8	PH6287008	HANDLE
9	PH6287009	PULL ROD
10	PH6287010	CHAIN
11	PH6287011	ADJUSTING SCREW M5-.8 X 40
12	PLN02M	LOCK NUT M5-.8
13	PH6287013	PRESSURE ROLLER
14	PH6287014	BUSHING
15	PH6287015	ALIGNMENT PIN
16	PR03M	EXT RETAINING RING 12MM
17	PR06M	EXT RETAINING RING 16MM
18	PH6287018	PUMP PLUNGER
19	PH6287019	COVER
20	PH6287020	COMPRESSION SPRING
21	PH6287021	DUST RING
22	PH6287022	Y-RING
23	PH6287023	SHAFT
25	PH6287025	PLUG
26	PH6289113	COPPER WASHER 16MM
27	PH6287027	COMPRESSION SPRING .5 X 4.8 X 21
28	PH6287028	DAMPENING VALVE SPINDLE
29	PH6287029	DAMPENING VALVE SEAT
30	PH6287030	STEEL BALL
31	PH6287031	BASE
32	PRP07M	ROLL PIN 6 X 20
37	PH6287037	STEEL BALL
39	PH6287039	DUST RING
40	PORP028	O-RING 27.7 X 3.5 P28
41	PH6287041	Y-RING
43	PH6287043	STEEL BALL
44	PH6287044	BALL BASE
45	PH6287045	COMPRESSION SPRING
46	PH6287046	REGULATING SCREW M10-1.5 X 1
47	P0464073	COPPER WASHER 10MM
48	PH6287048	PLUG
49	PH6287049	COMPRESSION SPRING 1.2 X 9.5 X 22

REF	PART #	DESCRIPTION
50	PORP007	O-RING 6.8 X 1.9 P7
51	PH6287051	STRIKE PIN
52	PH6287052	LEVER PLATE
53	PN01M	HEX NUT M6-1
54	PH6287054	REGULATING SCREW M6-1 X 25
78	POR0011	O-RING 10.6 X 1.8
80	PH6287080	O-RING 7.5 X 2.65
81	PH6287081	SPECIAL SCREW M8-1.25 X 1
102	PH6287102	PISTON ROD
111	PH6287111	BIG WHEEL SHAFT
112	P6203ZZ	BALL BEARING 6203ZZ
113	PH6287113	BIG WHEEL
114	PH6287114	DUST COVER
115	PW27MM	FLAT WASHER 17MM
116	PR18M	EXT RETAINING RING 17MM
117	PR12M	EXT RETAINING RING 35MM
118	PH6287118	SUPPORTING PLATE
119	PH6287119	ELASTIC PIN 5 X 28
120	P8107	THRUST BEARING 8107
121	PW20M	FLAT WASHER 35MM
122	PH6287122	DUST COVER
123-1	PB47M	HEX BOLT M6-1 X 40
123-2	PN01M	HEX NUT M6-1
200	PSB03M	CAP SCREW M5-.8 X 8
201	PH6287201	FORK FRAME
202	PH6287202	ROCKER ARM
203	PH6287203	ALIGNMENT PIN 14 X 30
207	PH6287207	LONG SHAFT
208	PR09M	EXT RETAINING RING 20MM
209	PH6287209	STRAIGHT TAPPET
210	PR02M	EXT RETAINING RING 14MM
211	PH6287211	REAR SHAFT
212	PH6287212	CENTER SHAFT
213	PR36M	EXT RETAINING RING 7MM
214	PH6287214	FORK WHEEL FRAME
215	PH6287215	FRONT SHAFT
216	PR36M	EXT RETAINING RING 7MM
217	P6203ZZ	BALL BEARING 6203ZZ
218	PH6287218	WHEEL
219	PH6287219	AXLE
220	PH6287220	MACHINE ID LABEL H6287
221	PH6287221	HANDLE POSITION LABEL



H6288 Parts Breakdown



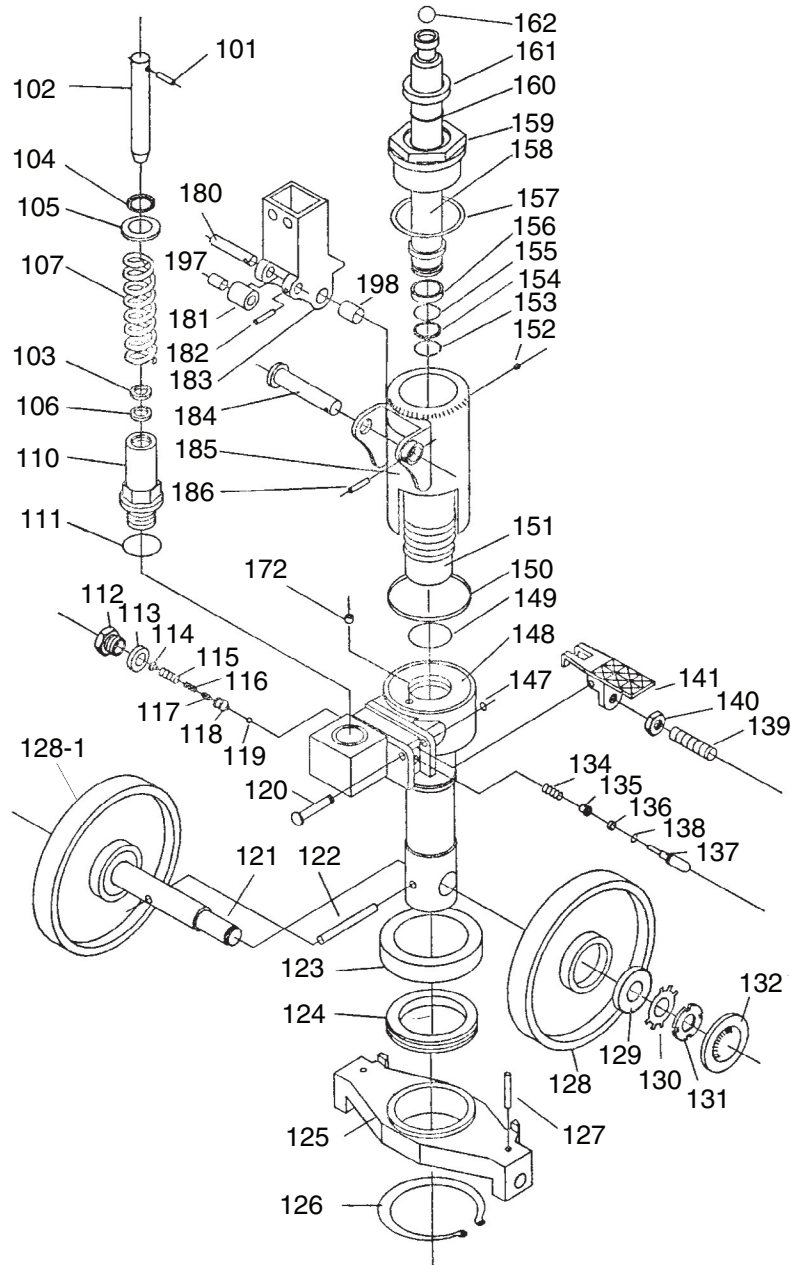
H6288 Parts List

REF	PART #	DESCRIPTION
13	PH6288013	PRESSURE ROLLER
14	PH6288014	BUSHING
15	PH6288015	ALIGNMENT PIN
16	PR03M	EXT RETAINING RING 12MM
17	PR06M	EXT RETAINING RING 16MM
18	PH6288018	PUMP PLUNGER
19	PH6288019	COVER
20	PH6288020	COMPRESSION SPRING
21	PH6288021	DUST RING
22	PH6288022	Y-RING
23	PH6288023	SHAFT
24	PRP27M	ROLL PIN 5 X 28
25	PH6288025	PLUG
26	PH6288026	COPPER WASHER 16MM
27	PH6288027	COMPRESSION SPRING
28	PH6288028	DAMPENING VALVE SPINDLE
29	PH6288029	DAMPENING VALVE SEAT
30	PH6288030	STEEL BALL
31	PH6288031	BASE
32	PRP08M	ROLL PIN 6 X 30
33	PH6288033	BOWL WASHER
34	P8108	THRUST BEARING 8108
35	PH6288035	SUPPORTING BASE
36	PR09M	EXT RETAINING RING 20MM
37	PH6288037	STEEL BALL
38	PH6288038	PISTON ROD
39	PH6288039	DUST RING
40	PORP028	O-RING 27.7 X 3.5 P28
41	PH6288041	Y-RING
43	PH6288043	STEEL BALL
44	PH6288044	BALL BASE
45	PH6288045	COMPRESSION SPRING
46	PH6288046	REGULATING SCREW M10-1.5 X 1
47	PH6289113	COPPER WASHER 16MM
48	PH6288048	PLUG
49	PH6288049	COMPRESSION SPRING
50	PORP007	O-RING 6.8 X 1.9 P7
51	PH6288051	STRIKE PIN
52	PH6288052	LEVER PLATE
53	PN01M	HEX NUT M6-1

REF	PART #	DESCRIPTION
54	PH6288054	REGULATING SCREW
55	PH6288055	BIG WHEEL SHAFT
56	PW13M	FLAT WASHER 20MM
57	P6204ZZ	BALL BEARING 6204ZZ
58	PH6288058	BIG WHEEL (POLY)
59	PR09M	EXT RETAINING RING 20MM
60	PH6288060	DUST COVER
61	PH6288061	SHAFT
62	PSB52M	CAP SCREW M8-1.25 X 10
63	PH6288063	FORK FRAME
64	PSB06M	CAP SCREW M6-1 X 25
65	PH6288065	HEX BOLT M16-1.75 X 45
66	PH6288066	ROCKER-ARM
67	PH6288067	ALIGNMENT PIN
68	PH6288068	STRAIGHT TAPPET
69	PH6288069	FORK WHEEL (POLY, SINGLE)
70	PH6288070	SHAFT
71	PH6288071	FORK WHEEL HOLDER
72	PH6288072	FORK WHEEL (POLY, TANDEM)
73	PH6288073	SHAFT
74	PH6288074	SHAFT
75	PRP06M	ROLL PIN 5 X 24
76	PH6288076	FRAME OF FORK WHEEL
77	PH6288077	SHAFT
78	POR0011	O-RING 10.6 X 1.8
79	PH6288079	SPECIAL WASHER
80	POR0011	O-RING 10.6 X 1.8
81	PH6288081	SPECIAL SCREW M10-1.5 X 1
82	PH6288082	BLADE SPRING
83	PRP22M	ROLL PIN 4 X 32
84	PH6288084	ROLL PIN 11 X 10
85	PRP39M	ROLL PIN 4 X 20
86	PH6288086	ROLL PIN 6 X 32
87	PRP60M	ROLL PIN 4 X 15
88	PH6288088	HANDLE
89	PH6288089	HANDLE TUBE
90	PH6288090	CHAIN AND STUD
91	PLN02M	LOCK NUT M5-.8
92	PH6288092	MACHINE ID LABEL H6288
93	PH6287221	HANDLE POSITION LABEL



H6289 Wheel Assembly Breakdown

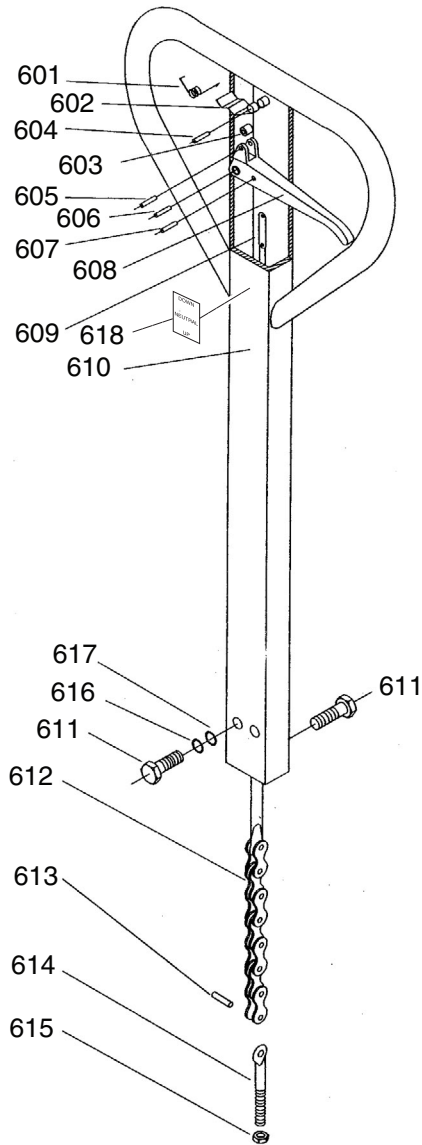


REF	PART #	DESCRIPTION
101	PRP56M	ROLL PIN 4 X 25
102	PH6289102	PUMP PLUNGER
103	PH6289103	DUST RING
104	PH6289104	PROTECTING RING
105	PH6289105	SPECIAL WASHER 4.5MM
106	PH6289106	Y-RING
107	PH6289107	COMPRESSION SPRING 44 X 5.5 X 120
110	PH6289110	PUMP CYLINDER
111	PORP041	O-RING 40.7 X 3.5 P41
112	PH6289112	DRAIN PLUG M16-1.75 X 1.5
113	PH6289113	COPPER WASHER 16MM
114	PH6289114	SPRING SEAT
115	PH6289115	COMPRESSION SPRING
116	PH6289116	COMPRESSION SPRING

REF	PART #	DESCRIPTION
117	PH6289117	DAMPENING VALVE SPINDLE
118	PH6289118	DAMPENING VALVE SEAT
119	PH6289119	STEEL BALL 1/4
120	PSS101M	SET SCREW M8-1.25 X 45
121	PH6289121	BIG WHEEL SHAFT
122	PRP79M	ROLL PIN 8 X 50
123	PH6289123	BEARING COVER
124	P8110	THRUST BEARING 8110
125	PH6289125	SUPPORTING BASE
126	PR56M	EXT RETAINING RING 45MM
127	PH6289127	ROLL PIN 5 X 55
128	PH6289128	BIG WHEEL (PU)
128-1	PH6289128-1	BIG WHEEL (NYLON)



H6289 Handle Assembly Breakdown



REF	PART #	DESCRIPTION
601	PH6289601	TORSION SPRING
602	PH6289602	BLADE SPRING
603	PH6289603	ROLLER
604	PRP22M	ROLL PIN 4 X 32
605	PRP39M	ROLL PIN 4 X 20
606	PH6289606	ROLL PIN 6 X 32
607	PRP60M	ROLL PIN 4 X 15
608	PH6289608	LEVER
609	PH6289609	PULL ROD
610	PH6289610	HANDLE TUBE
611	PB09M	HEX BOLT M8-1.25 X 20
612	PH6289612	CHAIN
613	PRP99M	ROLL PIN 2 X 12
614	PH6289614	ADJUSTING SCREW M5-.8 X 35
615	PLN02M	LOCK NUT M5-.8
616	PLW04M	LOCK WASHER 8MM
617	PW01M	FLAT WASHER 8MM
618	PH6287221	HANDLE POSITION LABEL



Free Manuals Download Website

<http://myh66.com>

<http://usermanuals.us>

<http://www.somanuals.com>

<http://www.4manuals.cc>

<http://www.manual-lib.com>

<http://www.404manual.com>

<http://www.luxmanual.com>

<http://aubethermostatmanual.com>

Golf course search by state

<http://golfingnear.com>

Email search by domain

<http://emailbydomain.com>

Auto manuals search

<http://auto.somanuals.com>

TV manuals search

<http://tv.somanuals.com>