



MODEL G8721/G8722 ENGINE STANDS INSTRUCTION SHEET

⚠️ WARNING

To reduce the risk of property damage, serious personal injury, or death when using this engine stand, take the following precautions:

- Refer to your vehicle service manual to locate the safe engine lifting/support locations, and to verify that the engine weight does not exceed the maximum engine stand load rating.
- Never attempt to start or run an engine on this engine stand.
- Only use this engine stand on a hard level surface capable of sustaining the combined load.
- Always mount all four mounting arms at the appropriate points on the engine.
- All mounting arms must be bolted tightly against the engine with at least 5/8" thread penetration into the engine.
- Never use an impact tool to tighten the mounting arm bolts into the engine. Tighten all bolts manually.
- Before removing the lock pin to rotate the engine, fully support the engine so the engine will not uncontrollably rotate when the pin is removed.
- Never modify this engine stand.
- Never allow children to play with or near the engine stand while in use or in storage.
- Avoid moving the engine and stand across a floor where a wheel may fall into a hole or crack and cause the unit to tip and fall.
- Never work under a supported engine.
- Never roll the stand without the lock pin installed.
- Periodically inspect the stand bolts, framework, wheels, and welds for looseness, cracks, or other damage.

Specifications

Model: G8721 Engine Stand

- Maximum Load: 1,000 lbs.
- Size: (L x W x H): 36" x 29½" x 34½".

Model: G8722 Engine Stand

- Maximum Load: 1,250 lbs.
- Size: (L x W x H): 42" x 33"x 34½".

Model G8721 Assembly

Note: Refer to **Figure 2** for reference.

1. Attach the post and rear leg to the center frame with one M12-1.75 x 60 hex bolt and lock washer.
2. Secure the front leg to the center frame with two M10-1.5 x 60 hex bolts, lock washers, and nuts.
3. Insert the flange spindle into the post bore. Then insert the rotation handle.
4. Line up the flange spindle hole with the hole in the post and install the lock pin.
5. Install four mounting arms to the flange with four M12-1.75 x 60 hex bolts, lock washers, and nuts.

Model G8722 Assembly

Note: Refer to **Figure 2** for reference.

1. Attach the front legs to the base with four M12-1.75 x 90 hex bolts, lock washers, and two nuts.
2. Attach the post to the base with two M12-1.75 x 90 hex bolts, lock washers, and nuts.
3. Install one M12-1.75 x 25 hex bolt and lock washer where each leg secures to the base.

4. Insert the flange spindle into the post bore, insert the rotation handle. Then slide the tool tray onto the mounting stud.
5. Line up the flange spindle hole with the hole in the post and install the lock pin.
6. Install the mounting arms to the flange with four M12-1.75 x 65 hex bolts, lock washers, and nuts.

Model G8721 Parts

REF	PART #	DESCRIPTION
1	P8721001	MAIN POST
2	P8721002	CENTER FRAME
3	P8721003	REAR FRAME
4	PB43M	HEX BOLT M12-1.75 X 75
5	P8721005	MOUNTING FLANGE
6	P8721006	LOCK PIN
7	P8721007	MOUNTING ARM
8	PB38M	HEX BOLT M12-1.75 X 60
9	PW06M	FLAT WASHER 12MM
10	PN24M	HEX NUT M12-1.25
11	PLW05M	LOCK WASHER 12MM
12	PB03M	HEX BOLT M8-1.25 X 16
13	PN03M	HEX NUT M8-1.25
14	P8721014	CASTER WHEEL
15	PLW04M	LOCK WASHER 8MM
16	P8721016	REAR WHEEL
17	PW06M	FLAT WASHER 12MM
18	P8721018	WARNING LABEL
19	P8721019	E-RING
20	P8721020	FRONT FRAME
21	PB34M	HEX BOLT M10-1.5 X 60
22	PW04M	FLAT WASHER 10MM
23	PN08M	HEX NUT M10-1.25
24	P8721024	ROTATION HANDLE

Model G8722 Parts

REF	PART #	DESCRIPTION
1	P8722001	MAIN POST
2	P8722002	FRONT LEG
3	P8722003	BASE
4	PB158M	HEX BOLT M12-1.75 x 90
5	PLW05M	LOCK WASHER 12MM
6	PN09M	HEX NUT M12-1.75
7	PB25M	HEX BOLT M12-1.75 x 25
8	P8722008	FLANGE
9	P8722009	LOCK PIN
10	P8722010	MOUNTING ARM

REF	PART #	DESCRIPTION
11	PB38M	HEX BOLT M12-1.75 x 60
12	PW06M	FLAT WASHER 12MM
13	PN09M	HEX NUT M12-1.75
14	P8722014	TOOL TRAY
15	P8722015	ROTATION HANDLE
16	P8722016	WARNING LABEL
17	P8722017	WHEEL, REAR 3-1/2"
18	P8722018	CASTER 3-1/2"
19	PB03M	HEX BOLT M8-1.25 X 16
20	PN03M	HEX NUT M8-1.25
21	PLW04M	LOCK WASHER 8MM

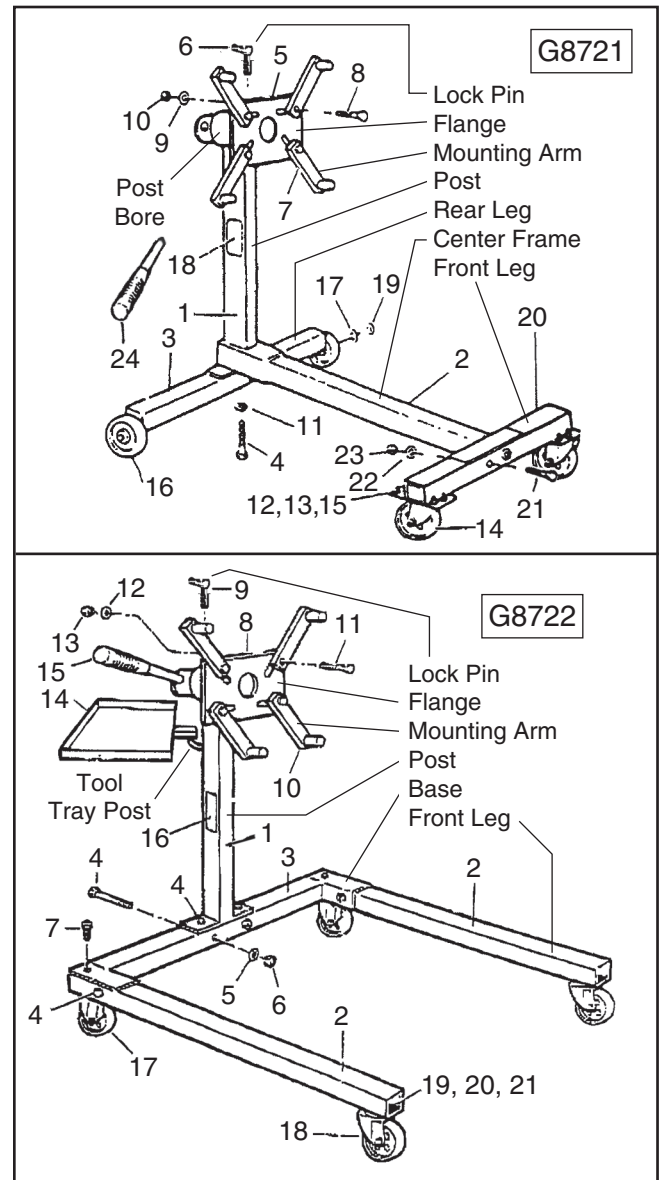


Figure 2. Engine stand components and parts.

If you need help with your new engine stand, call our Tech Support at: (570) 546-9663.

COPYRIGHT © SEPTEMBER, 2008 BY GRIZZLY INDUSTRIAL, INC.
WARNING: NO PORTION OF THIS MANUAL MAY BE REPRODUCED IN ANY SHAPE OR FORM WITHOUT THE WRITTEN APPROVAL OF GRIZZLY INDUSTRIAL, INC.

#CR11205 PRINTED IN CHINA

Free Manuals Download Website

<http://myh66.com>

<http://usermanuals.us>

<http://www.somanuals.com>

<http://www.4manuals.cc>

<http://www.manual-lib.com>

<http://www.404manual.com>

<http://www.luxmanual.com>

<http://aubethermostatmanual.com>

Golf course search by state

<http://golfingnear.com>

Email search by domain

<http://emailbydomain.com>

Auto manuals search

<http://auto.somanuals.com>

TV manuals search

<http://tv.somanuals.com>