



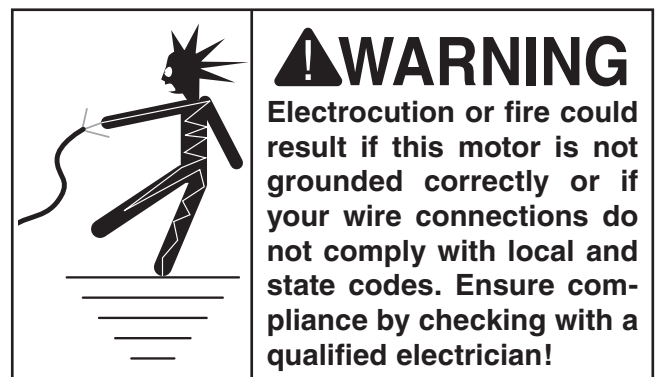
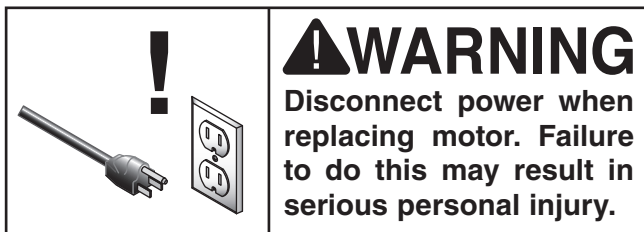
MODEL G2909 2 HP ELECTRIC MOTOR INSTRUCTION SHEET

Model G2909 Specifications

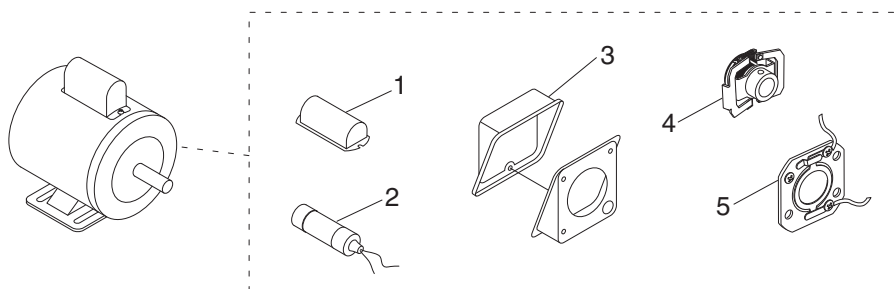
Power 2 HP
 Cycle.....60Hz
 Voltage110/220V
 Prewired220V
 Amps26/13A
 RPM..... 3450
 Phase Single
 Class..... E
 Start Capacitor 400MFD 125VAC
 Dimensions..... 1 7/8"D x 3 1/2"L

Electrical Safety

If you are unsure how to attach wires to terminals, DO NOT continue. Contact a qualified electrician for assistance. Connecting wires improperly may cause them to come loose or contact other wires, which can cause electrocution, fire, or a short.



Replaceable Parts

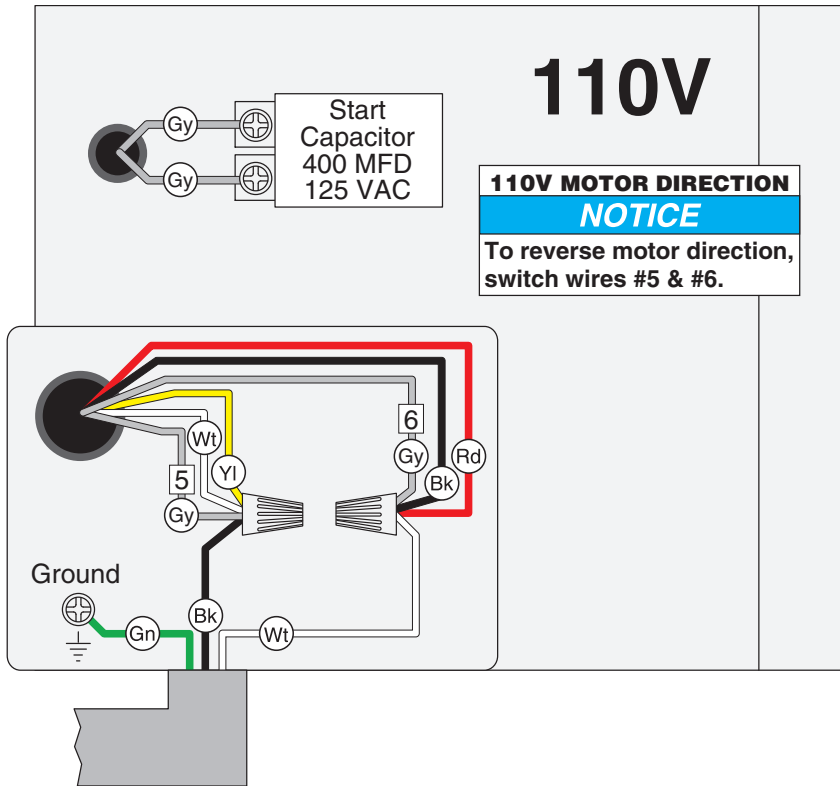


REF	PART #	DESCRIPTION
1	P2909001	S CAPACITOR COVER
2	PC400H	S CAPACITOR 400M 125V 1-7/8 X 3-1/2
3	P2909003	JUNCTION BOX

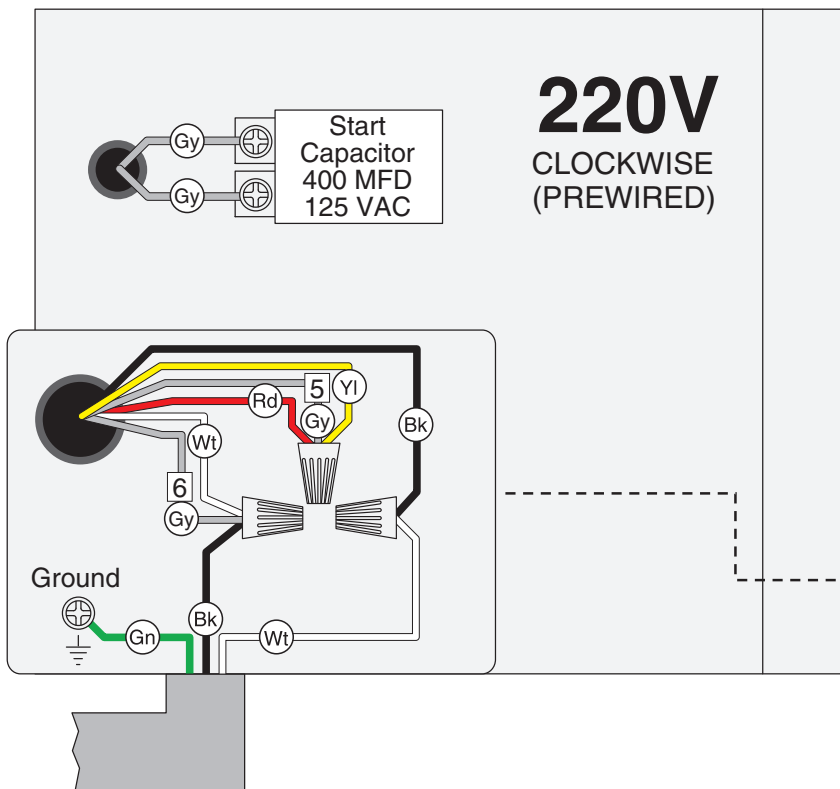
REF	PART #	DESCRIPTION
4	P2909004	CENTRIFUGAL SWITCH
5	P2909005	CONTACT PLATE

COPYRIGHT © DECEMBER, 2007 BY GRIZZLY INDUSTRIAL, INC.
WARNING: NO PORTION OF THIS INSTRUCTION SHEET MAY BE REPRODUCED IN ANY SHAPE OR FORM WITHOUT THE WRITTEN APPROVAL OF GRIZZLY INDUSTRIAL, INC.
 #JB10221 PRINTED IN TAIWAN

G2909 Wiring Diagram

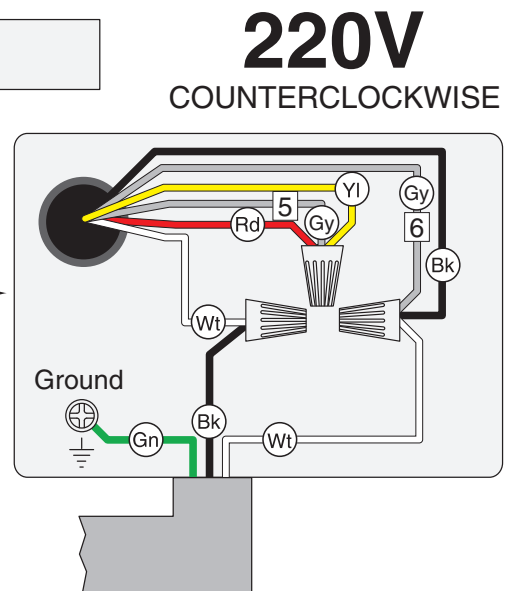


COLOR KEY	
BLACK	Bk
WHITE	Wt
GREEN	Gn
GRAY	Gy
RED	Rd
YELLOW	Yl



NOTICE

The motor wiring shown here is current at the time of printing, but it may not match your machine. Always use the wiring diagram inside the motor junction box.



Free Manuals Download Website

<http://myh66.com>

<http://usermanuals.us>

<http://www.somanuals.com>

<http://www.4manuals.cc>

<http://www.manual-lib.com>

<http://www.404manual.com>

<http://www.luxmanual.com>

<http://aubethermostatmanual.com>

Golf course search by state

<http://golfingnear.com>

Email search by domain

<http://emailbydomain.com>

Auto manuals search

<http://auto.somanuals.com>

TV manuals search

<http://tv.somanuals.com>