

**GRIFFIN**  
**PowerDock™ for Sansa™**  
Charge and sync your Sansa



**Quick Start Guide**

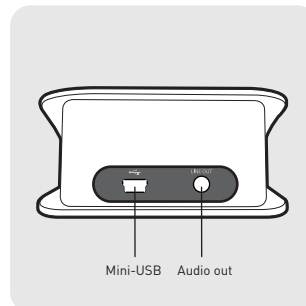
Thank you for purchasing Griffin's PowerDock for Sansa, the most convenient way to charge and sync your Sansa to your USB-equipped personal computer.

**Using PowerDock with your personal computer:**

1. This PowerDock package includes 3 adapters for use with different Sansa models. The adapter for Sansa e200 series is pre-installed. Insert the appropriate adapter for your Sansa model. For example, if you have a Sansa c250, use the c200 series adapter. The adapters are labeled, on their backs, by Sansa series number.
2. Connect the included USB mini-B cable to PowerDock's mini-USB port. Plug the other end of the USB cable into an available USB port on your computer. PowerDock's blue LED will light up to show that it is connected.
3. Slip your Sansa into PowerDock's cradle. Your Sansa will begin to sync with your computer as usual.
4. PowerDock will also charge your Sansa's battery while it is docked. (Please note that C140 and C150 players are not rechargeable.)

For your convenience, PowerDock also features an audio-out port that can be used with a standard 3.5mm (1/8") audio connector cable. For audio-out function, E200 Series players require an external power source such as Griffin's PowerBlock for Sansa. For other Sansa models, an external power source is also recommended to significantly conserve battery life when using the audio out port.

**PowerDock Rear Panel**



- Height: 45 mm
- Width: 97 mm
- Length: 74 mm
- Weight: 4.2 oz
- Power: Provided by USB port on computer, with included cable

**GRIFFIN**

Visit Griffin Support online:  
<http://www.griffintechology.com/support/>



PowerDock is a trademark of Griffin Technology, Inc. Sansa is a trademark of SanDisk Corporation.  
© 2006 Griffin Technology - [www.griffintechology.com](http://www.griffintechology.com) - Made in China - Invented in Tennessee

FRONT

PowerDock QS.ai  
09/27/06 2PM  
MAM

## Free Manuals Download Website

<http://myh66.com>

<http://usermanuals.us>

<http://www.somanuals.com>

<http://www.4manuals.cc>

<http://www.manual-lib.com>

<http://www.404manual.com>

<http://www.luxmanual.com>

<http://aubethermostatmanual.com>

Golf course search by state

<http://golfingnear.com>

Email search by domain

<http://emailbydomain.com>

Auto manuals search

<http://auto.somanuals.com>

TV manuals search

<http://tv.somanuals.com>