

|| Freecom **Beatman** FLASH MP3 PLAYER



Users Manual

Dear user!

Thank you for choosing the **Freecom Beatman Flash MP3/WMA Digital Audio Player**, the ultra small, skip-free solution for enjoying music everywhere you go, whatever you do. Please read the operating instructions carefully before starting to use your Freecom Beatman Flash.

Freecom Technologies • Germany
www.freecom.com

WARNING!

All rights reserved. The products named in this manual are only used for identification purposes and may be trademarks or registered trademarks of the respective companies. This device was designed for home or office use.

We reserve the right to upgrade our products in keeping with technological advances.

When using headphones

Avoid damaging your hearing: do not play your headset at a high volume. Hearing experts advise against continuous extended play. If you experience a ringing in your ears, reduce the volume or discontinue use.

Do not use while operating a motorized vehicle. It may create a traffic hazard and it is illegal in many areas. You should be extremely cautious or temporarily discontinue use in potentially hazardous situations. Even if your headphones are of an "open air" type, do not turn up the volume so high that you cannot hear what is going on around you.

USER MANUAL

Contents of the box	page 4
Minimum system requirements	page 5
Precautionary measures	page 5
Device description	page 6
Display panel	page 7

CHAPTER 1:

Start up - Hardware Installation	page 8
--	--------

CHAPTER 2:

Installation of the Digital Audio Manager software	page 10
--	---------

CHAPTER 3:

Driver Installation	page 12
---------------------------	---------

CHAPTER 4:

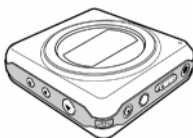
Every day use	page 19
---------------------	---------

CHAPTER 5:

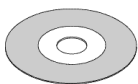
Troubleshooting	page 29
Freecom Internet Service & Support Hotline	page 30

Contents of the box

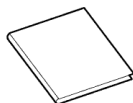
Before starting to use your Freecom Beatman Flash, please check the box for the following contents.



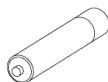
Freecom Beatman Flash MP3/WMA player



Software CD



Quick Install Guide



Duracell Ultra M3
AAA size battery



Sennheiser headphones



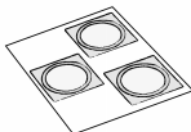
USB cable for
connection to PC



Neck-strap



Warranty card



Cover labels

Contact your local Freecom dealer/retailer or the Freecom Support Center for your country (see page 30) if any of the above items are missing from your box. Do not forget to register your Freecom Beatman Flash by visiting www.freecom.com or by filling out the warranty card.

Minimum System Requirements for Digital Audio Manager Software

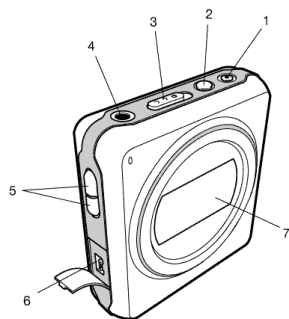
- Intel Pentium 133 MHz
- 32 MB RAM
- 40 GB free hard drive space
- CD-ROM drive
- Windows 98 SE, ME, 2000 or XP
- Available USB port

Precautionary measures

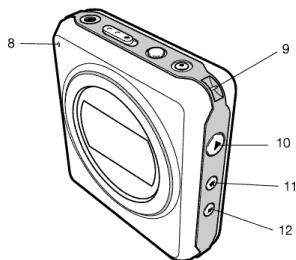
To ensure that your Freecom Beatman Flash functions properly, please take note of the following precautions. If these are not followed, you may void your warranty and damage the Beatman Flash.

- Do not drop the Freecom Beatman Flash or expose it to other kinds of excessively heavy shocks, as this may result in the unit malfunctioning.
- Do not use the Freecom Beatman Flash when the ambient temperature is below 10°C or above 45°C and in direct sun-light.
- If the Freecom Beatman Flash is moved from a cool environment to a warmer environment, please allow it to acclimatize to the ambient temperature before operating the device. Failing to do so may lead to condensation within the enclosure, which in turn may cause it to malfunction.
- Do not place liquids or drinks on the Beatman Flash. When liquids are spilled and get in contact with the electronics within the device enclosure, it will damage the Beatman Flash and will cause it to malfunction.
- Do not use the Beatman Flash in a dusty environment. Dust inside the enclosure may damage the internal electronics and result in a malfunction.
- Opening the Beatman Flash will void the warranty.

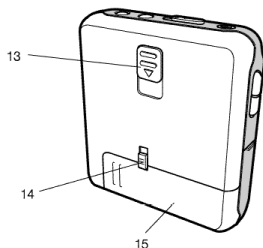
Device description



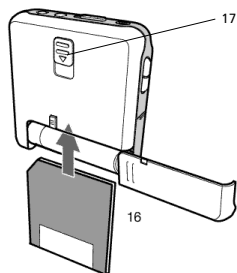
- 1 Rec (voice recording) / Repeat A-B button
- 2 Mode / Equalizer / Navigation button
- 3 Hold switch
- 4 Headphone connector
- 5 Volume control (up/down)
- 6 USB connector
- 7 LCD Display



- 8 Microphone
- 9 Neck strap holder
- 10 Power On / Play / Pause / Power Off button
- 11 Previous / Fast backward
- 12 Next / Fast forward

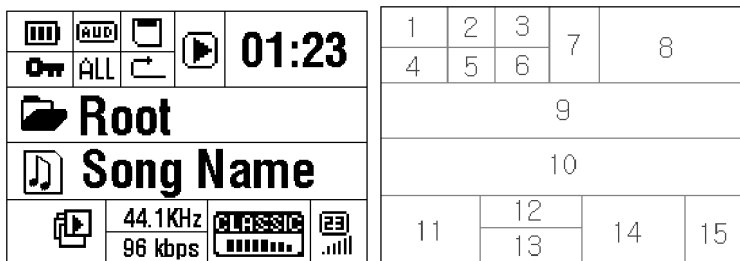


- 13 SMC card eject switch
- 14 Battery lock switch
- 15 Battery cover



- 16 Insert SMC card in the correct direction, as shown.
- 17 To remove SMC card, open the battery cover, slide the SMC card eject switch (13) down and remove card.

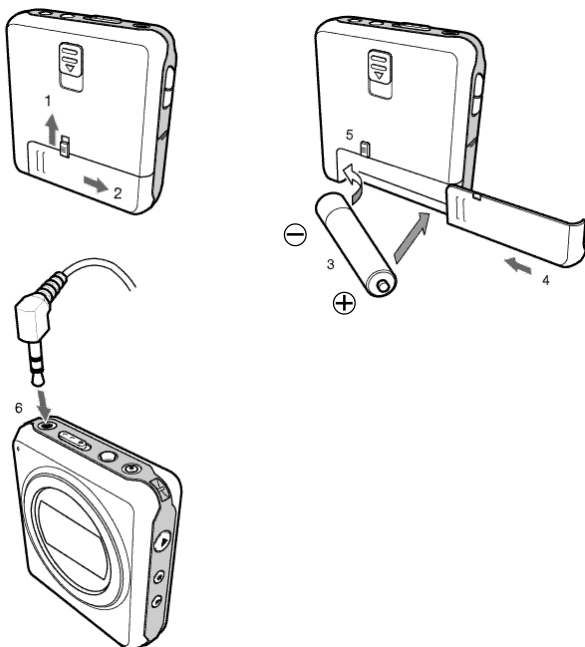
Display panel



- BATTERY indicator
- PLAY TYPE (audio/voice) indicator
- SMC CARD indicator (only appears if SMC card is inserted)
- HOLD indicator
- REPEAT MODE indicator
- REPEAT SETTING indicator
- PLAY STATUS indicator
- PLAYING TIME indicator
- CURRENT FOLDER indicator
- CURRENT SONG indicator
- CURRENT FILE TYPE indicator
- CURRENT SAMPLING FREQUENCY indicator
- BIT RATE indicator
- EQUALIZER SETTING indicator
- VOLUME indicator

CHAPTER 1: Start up - Hardware Installation

1.1 Inserting battery & connecting headphone

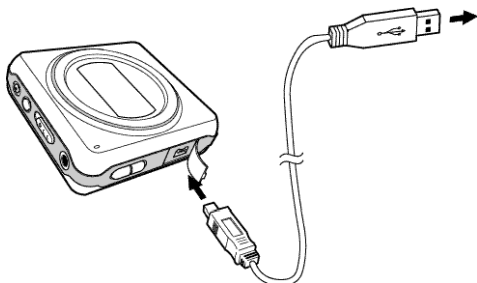


1. Unlock battery cover by sliding the battery hold switch in the direction shown.
2. Slide the battery cover in the direction shown to open the battery cover.
3. Insert one AAA-size battery as shown, with the - side touching the spring inside the battery cover.

Note: Batteries contain chemical substances. When empty, they should be properly disposed of.

4. Slide the battery cover back.
5. Lock the battery cover by sliding the lock-switch back.
6. Insert the headphone jack into the headphone connector, as shown.

1.2 Connecting the Beatman Flash to your PC



1. Insert the large USB connector into a USB port (USB 1.1 or 2.0) of your PC
2. Insert the small USB connector into the USB connector of the Beatman Flash.

Note: If you connect the USB cable when the Beatman Flash is still playing, it may cause the unit to malfunction. To avoid this, please only connect the USB cable when the Beatman Flash is in Power Off or Pause mode.

CHAPTER 2: Installing the Digital Audio Manager software

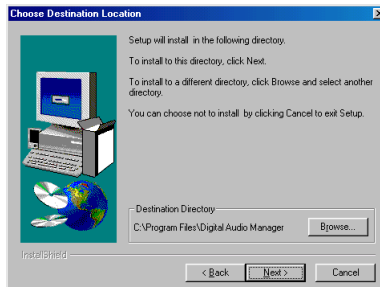
Notes: Check www.freecom.com for the latest software-versions and updates.

1. Insert the software CD ("FC Beatman Flash") into your CD-ROM drive.

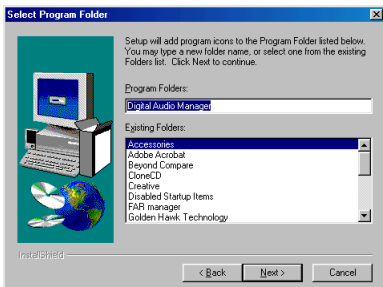


Click "Digital Audio Manager Software" to continue.

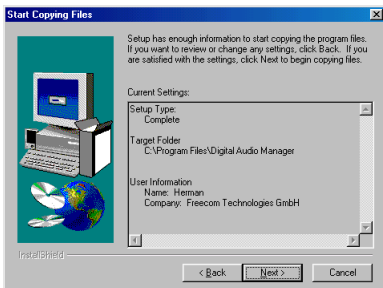
2. Select destination directory (we advise you to accept the default selection) and click "Next" to continue



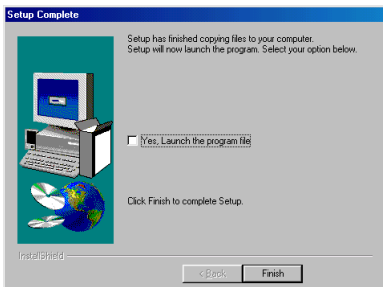
3. Click "Next" to continue



4. Click "Next" to continue



5. Click "Finish" to finish installation. You can access Digital Audio Manager from the Programs menu in the Windows Start menu.



CHAPTER 3: Driver Installation

GB
USA

3

3.1 Installing Windows 98 SE USB driver

1. Make sure the Freecom Beatman Flash is connected to the PC by using the supplied USB connection cable.
2. Switch the Freecom Beatman Flash on.
3. The "Add New Hardware Wizard" opens and a "USB Device" is found.



Click on "Next".

4. In the next window select "Search for the best driver for your device. (Recommended)".



Click on "Next".

5. Click "Browse". Select the CD-ROM drive with the Digital Audio Player software.



Continue by clicking on "Next".

6. Follow the instructions on screen. The necessary files will be installed. Click on "Finish" to complete the installation.



3.2 Installing Windows Me USB driver

1. Make sure the Freecom Beatman Flash is connected to the PC by using the supplied USB connection cable.
2. Switch the Freecom Beatman Flash on.
3. The "Add New Hardware Wizard" opens and a "USB Device" is found.



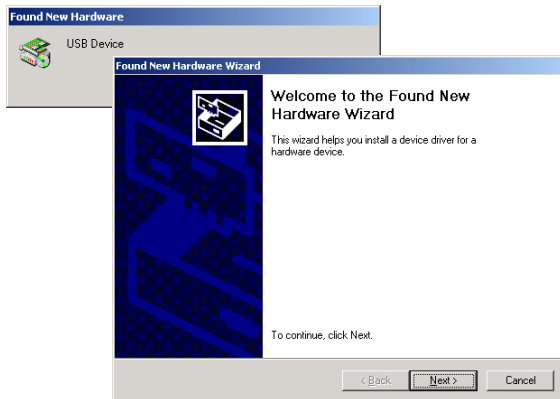
Click on "Next".

4. The necessary files will be installed. Click on "Finish" to complete the installation.



3.3 Installing Windows 2000 USB driver

1. Make sure the Freecom Beatman Flash is connected to the PC by using the supplied USB connection cable.
2. Switch the Freecom Beatman Flash on.
3. The "Add New Hardware Wizard" opens and a "USB Device" is found.



Click on "Next".

4. In the next window select "Search for a suitable driver for my device (recommended)".



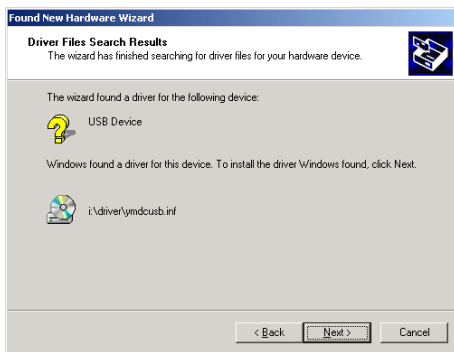
Click on "Next".

5. Make sure that the checkbox "CD ROM drive" is activated in the next window.



Continue by clicking on "Next".

6. In the next window a message is shown, that a driver for an USB device is found.



Click on "Next".

7. The necessary files will be installed. Click on "Finish" to complete the installation.



3.4 Installing Windows XP USB driver

1. Make sure the Freecom Beatman Flash is connected to the PC by using the supplied USB connection cable.
2. Switch the Freecom Beatman Flash on.
3. The "Add New Hardware Wizard" opens and a "USB Device" is found.



Click on "Next".

4. Click "Continue Anyway".



5. The necessary files will be installed. Click on "Finish" to complete the installation.

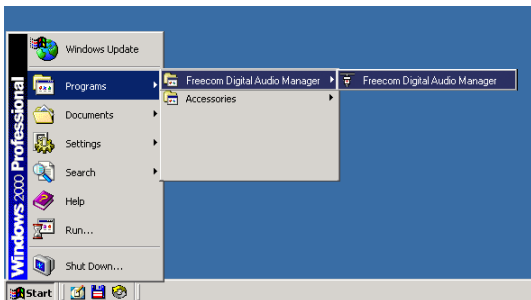


CHAPTER 4: Every day use

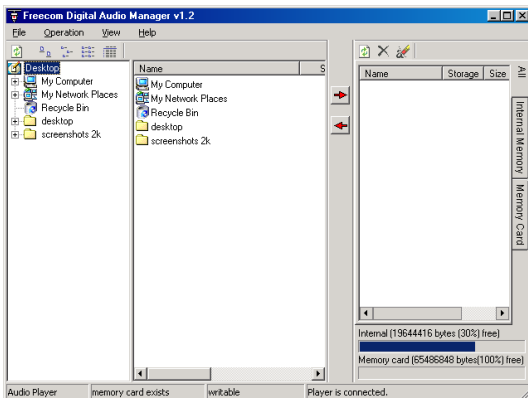
4.1 Starting the program

Please select the "Freecom Digital Audio Manager":

1. Click "Start" - "Programs" - "Freecom Digital Audio Manager" - "Freecom Digital Audio Manager".



2. Select the music files you want to transfer and "drag and drop" them to the screen on the right.



3. To transfer / change / remove files or to format the memory, please select the operation menu

4.2 Description of the menus

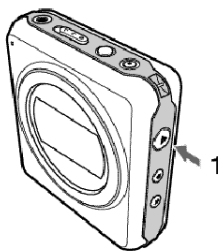
MENU	SUBMENU	DESCRIPTION
OPERATION	DOWNLOAD SELECTED FILES FROM PC TO PLAYER	Download selected data or files from PC into internal/ external memory (Drag & Drop)
	UPLOAD SELECTED FILES FROM PLAYER TO PC *)	Upload selected data or files from internal/external memory of Player to PC (drag & drop)
	REMOVE SELECTED FILES FROM PLAYER	Delete selected data or files from internal/external memory of Player
	REMOVE ALL FILES	Delete all data or files from internal and/or external memory of Player
	FORMAT	Format all internal/external memory of Player
	FORMAT ALL MEMORIES	Format all selected data or files in internal and/or external memory of Player
	CANCEL OPERATIONS IN QUEUE	Cancel operation of selected DOWNLOAD/UPLOAD/DELETE in queue
	CANCEL ALL OPERATIONS	Cancel all operations of DOWNLOAD/UPLOAD/DELETE in queue
VIEW	MEMORY	Option for viewing selected memory in internal/external memory. You can select and view one of [NAME, STORAGE, SIZE, DATA]
	PC	Option for viewing data in PC. You can select and view one of [BIG ICON, SMALL, ICON, LIST, REPORT]
ABOUT	ABOUT	Information on Digital Audio Manager software

***) Note: When "UPLOAD SELECTED FILES FROM PLAYER TO PC" is selected:**

- 1. MP3 and WMA files can not be uploaded from Player to PC.**
- 2. Voice files will be converted into .wav and stored on the PC.**

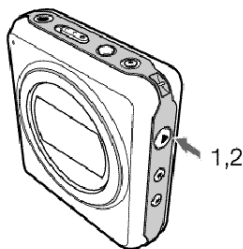
4.3 Operating instructions

Power on



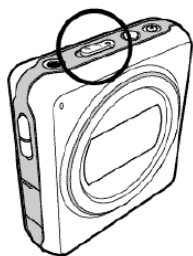
1. Press the "▶" button to turn the power on.
2. After Power On, music will start immediately (when autoplay is activated).

Pause / Power off



1. Press "▶" button during playback to pause the player.
2. To turn the power off, press "▶" button for more than 2 seconds when the player is in pause mode.

Hold On/Off



Hold-On

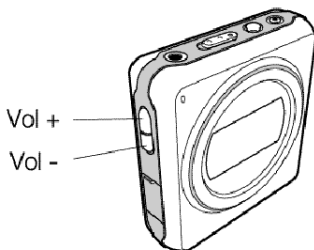


Hold-Off

The Hold function locks all buttons.

1. Slide the hold switch in the direction of the arrow to activate Hold function.
2. Slide the hold switch back to de-activate Hold function.

Volume Control

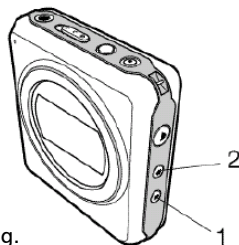


Press Vol. +/- on the left side of the player to adjust the volume. Volume range is 0 (minimum) to 30 (maximum).

Fast Backward & Fast Forward

Press and hold "◀" button during playback to search fast backward within the song.

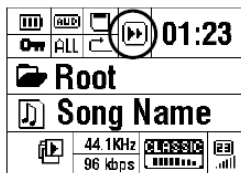
Press and hold "▶" button during playback to search fast forward within the song.

Previous / Next Track

1. Press "▶" button to move the next song.
2. Press "◀" button to move the previous song.

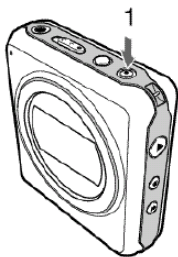
Loop repeat

1. Press "Rec/A.B" button shortly during playback to mark the beginning of the loop. "A ▶" will flicker in the display
2. Press "Rec/A.B" button shortly again to mark the end of the loop. "A ▶ B" will appear in the display and the loop is played repeatedly.
3. Press "Rec/A.B" button shortly again to exit the loop.



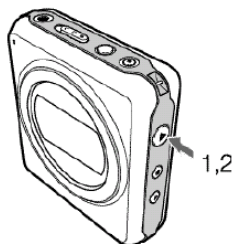
Deleting Files

Press "Rec/A.B" button for a few seconds during playback to delete the song currently playing.



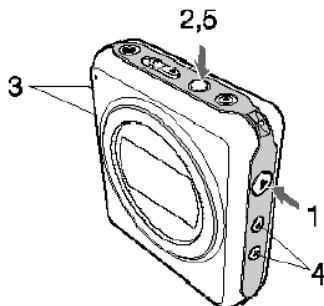
Intro

1. Press "▶" button for a few seconds to activate the intro mode: the first 10 seconds of each song will be played in sequence.
2. Press "▶" again to exit the intro mode.

**MODE Setting**

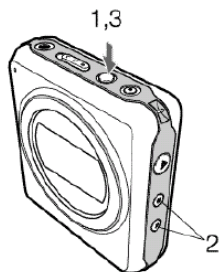
1. Press "▶" button to pause music while playing.
2. Press MODE button for a few seconds to enter the MODE menu.
3. Scroll through the menu by pressing VOL +/- buttons.
2. Change the setting by pressing "◀" or "▶" buttons .
3. Press MODE button for a few seconds to exit mode menu.

See table on page 26 for a detailed description of the mode settings.



MODE Setting

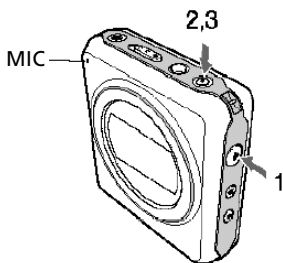
MODE ITEMS	SETTINGS	REMARKS
Type (play mode)	<AUDIO> Music (MP3/WMA) play mode <VOICE> Voice recording and playback mode	
Repeat	<1 song> repeat 1 song <ALL> repeat all	
P-mode	<Auto-R>: infinite repeat <Intro>: play the first 10 seconds of each song	
Set EQ	<Normal> / <Classic> / <Live> / <Pop> / <Rock>	
ERASE	<1File> erase 1 music file when pressing Rec/A.B	
VS SET	8kbps / 16kbps / 32kbps	High quality means a larger file size
AUTO PLAY	<On> song starts playing automatically when power is turned on <Off> Auto Play off	
RESUME	<Off> Playback starts with the first song in memory <Song> Playback starts with the last song that was playing before power was switched off <Real> Playback starts from the exact position in the last song that was playing before power was switched off	
EL MODE (backlight)		backlight is on for 3 seconds
Language	<Eng> English <Kor> Korean <Chn> Chinese <Jpn> Japanese	
ID3 tag	<On> ID3 tag information (if available) is displayed <Off> ID3 tag information is not displayed	
Contrast	0 - 10	0 = no contrast, 10 = high contrast

Equalizer setting and navigation during playback**Equalizer Setting**

1. Press MODE button shortly during playback
2. EQ indicator on display will flicker; change EQ setting by pressing "◀" or "▶" button.
3. Press MODE button shortly to exit EQ setting menu

Navigation during playback

1. Press MODE button for a few seconds during playback
2. Search for music file by pressing "◀" or "▶" button
3. Press "▶" to play the selected song

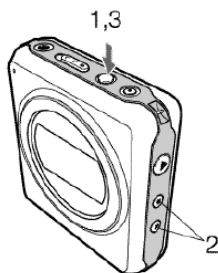
Voice recording

1. Press "▶" button during playback to enter pause mode
2. Press "Rec/A.B" button for more than 2 seconds to start voice recording. "Recording now..." will appear in the display.
3. Press "Rec/A.B" button shortly to stop voice recording.

Note

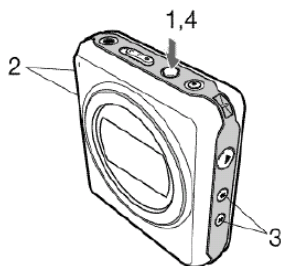
- Voice file is created automatically during voice recording
- Voice quality can be changed in "MODE" settings, see page 26

Playback & Deleting voice files



1. Playback of recorded voice files is the same as playback of music files. Select a file using "◀" or "▶" and press "▶" to start playback.
2. Press "Rec/A.B" button for more than 2 seconds to delete the voice file that is currently playing.

Returning to Audio mode



1. Press "▶" button shortly to pause mode during playback.
2. Press MODE button for a few seconds to enter mode setting menu.
3. Press VOL +/- buttons until you reach TYPE mode
4. Press "◀" or "▶" button to change from Voice to Audio mode
5. Press "MODE" for more than 2 seconds to exit Mode setting menu.

CHAPTER 5: Troubleshooting

**GB
USA**
5

PROBLEM	CAUSE AND ACTION
The power will not turn on	Check if the battery is inserted correctly Check if the battery is empty; if so replace battery Check if ambient temperature is too low; operating temperature is between 10° and 45° C.
Buttons do not work	Check if the Hold function is activated: if so de-activate hold function.
Poor sound quality or no sound	Check if headphones are connected correctly Check if SMC card is inserted correctly
MP3/WMA files cannot be downloaded	Check if power is turned on. Check if USB cable is connected correctly to player and PC. Check in Windows Device Manager if the USB driver is installed correctly.

Freecom Internet Service

Freecom Technologies has made the following service available on the Internet, at www.freecom.com:

- Online information about technical information
- current product information
- Drivers, driver updates and software information
- Forum

Support Hotline

The following hotlines are available if you are still unable to get your Freecom Beatman Flash to work properly after reading the manual and the suggestions for troubleshooting:

	Hotline	Email
België (NL)*	0 78 25 00 00	supportnl@freecom.com
Belgique (F)*	0 78 25 00 01	supportfr@freecom.com
Belgien (D)*	0 78 25 00 02	supportde@freecom.com
Danmark	33 11 42 00	supportint@freecom.com
Deutschland & Österreich	+49 (0) 20 37 68 09 50	supportde@freecom.com
France	+33 (0) 1 34 04 72 05	supportfr@freecom.com
Nederland	+31 (0) 1 58 88 01 10	supportnl@freecom.com
Norge	62 82 13 67	supportint@freecom.com
Schweiz (D)	+41 (0) 8 48 88 99 10	supportde@freecom.com
Suisse (F)	+41 (0) 8 48 88 77 10	supportfr@freecom.com
Suomessa	03 - 6 10 13 82	supportint@freecom.com
Sverige	08 - 29 66 00	supportint@freecom.com
United Kingdom & Ireland	+44 (0) 14 23 70 47 15	supportuk@freecom.com
USA	+1 501 548 48 49	support.usa@freecom.com
other countries	+31 (0) 1 58 88 01 10	supportint@freecom.com

* (alléén in België/seulement pour la Belgique/nur in Belgien)

Technical Specifications

Supported file formats	MP3 (MPEG 1/2/2.5 layer 3) playback WMA
Supported MP3 bitrates	32Kbps ~ 320Kbps CBR and VBR
Supported MP3 sampling frequencies	16/22.05/24/32/44.1/48 kHz
Supported WMA bitrates	64Kbps ~ 128Kbps
Internal memory	see product label on retail box
Voice recording	user selectable (8/16/32Kbps) recording time: max. 17 hours at 8Kbps when internal memory is 64MB
LCD	Multi Line Graphic LCD, 128*64 dots and 4 lines EL backlight
Memory expansion	SMC expansion slot, for 32MB / 64MB/ 128MB SMC cards
ID3 tag support	Yes
Equalizer	Normal / Classic / Pop / Rock / Live
Supported languages	English, Korean, Chinese, Japanese
PC interface	USB
Power requirement	1x AAA size, alkaline battery or rechargeable battery
Operation time	up to 9 hours on 1 AAA size alkaline battery
Dimensions	size: 52.6 x 56.7 x 17.5 mm / 2.07 x 2.23 x 0.68 inch weight (without battery): 44 gr / 1.55 ounce
Headphone Output specifications	Frequency response 20Hz – 20kHz Signal to noise ratio: > 85dB Total Harmonic Distortion: < 0.1%

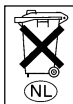
WARRANTY (valid in Europe/Turkey only):

Warranty: two years manufacturers warranty. Opening the Freecom Beatman Flash voids warranty.

For service contact your local Freecom dealer or the Freecom Service Center in your country.

Freecom and Beatman are trademarks of Freecom Technologies BV, Delft, The Netherlands (freecom.com). All other brands/marks are trademarks of their respective companies.

Errors and omissions excepted.



FEDERAL COMMUNICATIONS COMMISSION - DECLARATION OF CONFORMITY

This equipment has been tested and found to comply with the limits for a Class B digital device, pursuant to part 15 of the FCC Rules, and RS 210 Regulations (Canada). These limits are designed to provide reasonable protection against harmful interference in a residential area. This equipment generates, uses, and can radiate radio frequency energy and if, not installed and used in accordance with the instructions, may cause harmful interference to radio communications. However, there is no guarantee that interference will not occur in a particular installation. If this equipment does cause harmful interference to radio or television reception, which can be determined by running the equipment off and on, the user is encouraged to try to correct the interference by one or more of the following measures:

- Reorient or relocate the receiving antenna.
- Increase separation between the equipment and receiver.
- Connect the equipment to an outlet on a circuit different from that to which the receiver is connected.
- Consult the dealer or an experienced radio technician for help.

Free Manuals Download Website

<http://myh66.com>

<http://usermanuals.us>

<http://www.somanuals.com>

<http://www.4manuals.cc>

<http://www.manual-lib.com>

<http://www.404manual.com>

<http://www.luxmanual.com>

<http://aubethermostatmanual.com>

Golf course search by state

<http://golfingnear.com>

Email search by domain

<http://emailbydomain.com>

Auto manuals search

<http://auto.somanuals.com>

TV manuals search

<http://tv.somanuals.com>