

The challenge of driving Genesis loudspeakers is that they are such excellent transducers that they expose the flaws, or highlight the quality, of everything up the chain - something that almost every review of Genesis loudspeakers has mentioned. Hence, they demand a very well-designed and well-executed power amplifier.

A LEGACY OF EXCELLENCE AND MUSICALITY

When we developed the Limited Edition line of affordable valve amplifiers as proof of concept that you did not need a megabuck and/or kilowatt amplifier to drive a pair of Genesis loudspeakers, they garnered rave reviews, and sold out quickly. Reviewers took to calling them “reference quality” (Srajan Ebaen – on 6moons), conveying “*all the benefits of tube amplification with virtually none of the drawbacks*” (Jason Victor Serinus – Secrets of Home Theater and Hifi), “*robust, powerful, and full of life*” (Jack Roberts – Dagogo).

However, much more than how “reference quality” they are, the objective of the design is to play music with true verve and emotion – not just satisfy some specification. “*I was surprised how musically enjoyable the Genesis I60 was*” (Jack Roberts – Dagogo) “*...the M60’s delivered. Drenched with feelings, I wiped away a few tears and ironed out plenty of goose bumps.*” (Srajan Ebaen – 6moons)

A new Genesis amplifier had to be better than the M60’s in all aspects. The design brief was simple: a

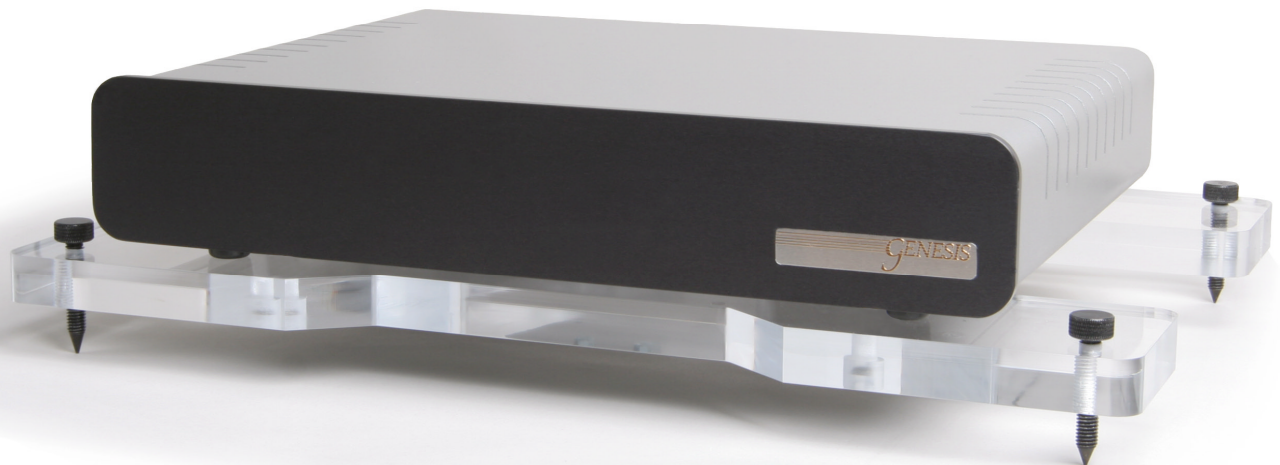
load invariant, high-current, wide-bandwidth amplifier that would allow the musical performance to come to life. In addition, the new amplifiers had to be capable of driving any model in the Genesis range, from the Genesis 7.1 *petite* up to the towering flagship – the Genesis 1.1.

The Genesis Reference Amplifier challenges the *status quo* of music amplifiers by marrying the advantages of tube (imaging, soundstage, and portrayal of tonal colors) with solid state (control, dynamics and accuracy). To achieve this, we had to develop some ground-breaking technologies.

DYNAMIC POWER DELIVERY SUPPLY (DPDS)

Traditional DC power supplies developed with established design principles are specified into a constant current draw with a resistive load. However, except for Class A amplifiers (and Class AB at low power), the load is not linear. The power supply is hence specified for the maximum current drawn, but such a huge power supply is often slow.

The Genesis DPDS, on the other hand, is designed to deliver current into a non-linear, dynamic musical load, leading to a sense of *power with finesse*. The result is that the Genesis Reference Amplifier has the dynamics, extension and drive of high-power transistor amplifiers without the muscle-bound sound, and the elegance, emotion and tonal colors of flea-powered single-ended triode tube amplifiers without being weak or flaccid.



Genesis Reference Amplifier

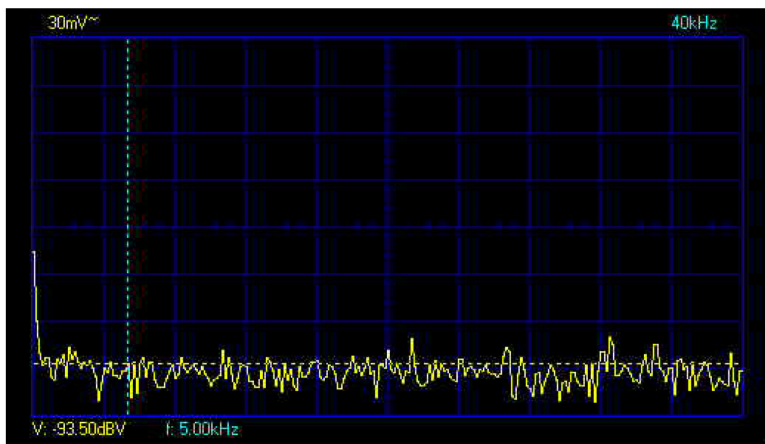
MAXIMUM DYNAMIC HEADROOM RESERVOIR

The MDHR is an add-on power supply upgrade that extends the ability of the DPDS as well as adding resonance control circuitry at the power supply. It allows the Genesis Reference Amplifier to drive harder and faster into lower impedance loads. This results in increased macro-dynamics, and more nuanced micro-dynamics – one listener described it as “having cream in your coffee instead of non-fat soy”. The MDHR is available for all models of the Genesis Reference Amplifier as well as the Servo-Controlled Amplifier.

SILENT RUNNING VOLTAGE SUPPLY

We recognized that published specifications for noise rejection of opamps and even discrete small-signal amplification circuits did not always tell the whole story. The truth is that PSRR is specified at one frequency – usually 1kHz, but the problem is that this rapidly gets worse as the frequency rises.

For the Genesis Reference Amplifier, a low-current regulated voltage supply was developed that has *broad bandwidth noise rejection* so that RFI noise coming in over the power lines do not intrude on your music.



Audio Band Noise Rejection (over –90dB to 40kHz)

ACOUSTIC SUSPENSION SYSTEM

A dedicated suspension system isolates the Genesis Reference Amplifier from floor and structure-borne vibrations. Designed like the suspension system of a racecar, the acoustic suspension is made of a solid acrylic frame, neoprene shock absorbers, and steel spikes. The suspension is also available as an add-on to the MDHR upgrade module.

Other features that have been incorporated include:

- A grounded Faraday Cage chassis for RFI and EMI rejection improves micro-dynamics, and tonal colors and contrast.
- Outboard power transformer to stop mains radiation and vibrations from intruding into the amplifier chassis and signal path.
- Balanced components, in the push and the pull parts of the power supply, and having critical components toleranced to closer than +/- 1% results in a sense of *aliveness* and *ease* in the music.
- Special circuitry to “keep things warm” without wasting a lot of electricity means that your system is ready for you to listen to whenever you are.

GOOD, BETTER, BEST

The Genesis Reference amplifier is available at three levels: a 180Watt per channel version, a 360Watt per channel version, and a pair of 360Watt monoblocks.

Add a pair of the MDHR power supply upgrades to a pair of 360W monoblocks, and you have the Genesis *Statement* Amplifier.

SPECIFICATIONS

Genesis Advanced Technologies Reference Amplifier

Frequency Response	10Hz to 50kHz +0db/-3dB
Power Bandwidth	18Hz to 36kHz
Output Power (1% THD @ 4 ohm)	180 watts or 360 watts
Distortion (20Hz to 35kHz)	0.015%
Input Impedance (balanced)	100k Ohm
Damping (@ 4 ohm)	2,000 min
Gain	26dB
Peak Output Current	limited to 20 amps after 40ms
Inputs	Balanced XLR or Single-ended RCA
Outputs	ETI CablePods™
Dimensions and Weight:s	
	Amplification module: 17.5" W x 3.5" H x 13" D, 23lb 445mm x 86mm x 330mm, 10.5kg
	Acoustic Suspension: 18.5" W x 1.5" H x 14" D, 5lb 470mm x 36mm x 356mm, 2.2kg
	Power module: 9" W x 4.5" H x 12" D, 32lb 228mm x 114mm x 228mm, 14.5kg
Optional:	Maximum Dynamic Headroom Reservoir

*Specifications *may* change without notice

absolute fidelity™

Free Manuals Download Website

<http://myh66.com>

<http://usermanuals.us>

<http://www.somanuals.com>

<http://www.4manuals.cc>

<http://www.manual-lib.com>

<http://www.404manual.com>

<http://www.luxmanual.com>

<http://aubethermostatmanual.com>

Golf course search by state

<http://golfingnear.com>

Email search by domain

<http://emailbydomain.com>

Auto manuals search

<http://auto.somanuals.com>

TV manuals search

<http://tv.somanuals.com>