



**Wireless LAN / Fast Ethernet  
Motion JPEG Internet Camera**

**(IC-1500Wg / IC-1500)**

# Quick Installation Guide

Version 1.0

## Multi-Language QIG in driver CD

---

**Český:** Anglického průvodce rychlou instalací naleznete na přiloženém CD s ovladači

**Deutsch:** Finden Sie bitte das englische QIG beiliegend in der Treiber CD (German)

**Español:** Incluido en el CD el QIG en Ingles.

**Français:** Veuillez trouver l'anglais QIG ci-joint dans le CD driver

**Italiano:** Incluso nel CD il QIG in Inglese.

**Magyar:** Az angol telepítési útmutató megtalálható a mellékelt CD-n

**Nederlands:** De engelstalige QIG treft u aan op de bijgesloten CD

**Polski:** Skrócona instrukcja instalacji w języku angielskim znajduje się na załączonej płycie CD

**Português:** Incluído no CD o QIG em inglês.

**Русский:** Найдите QIG на анлийском языке на приложенном CD

**Türkçe:** Ürün ile beraber gelen CD içinde Türkçe Hızlı Kurulum Kılavuzu'nu bulabilirsiniz

## 1. Check your package contents

- One Internet Camera / with antenna (IC-1500Wg only)
- One external power adapter
- One camera stand and 100M Cat.5 Ethernet cable
- One Quick Installation Guide and User's CD

Please contact your dealer if any items above are missing.

## 2. System Requirements

System requirements for PC, MAC or Notebook to access the Internet Camera are:

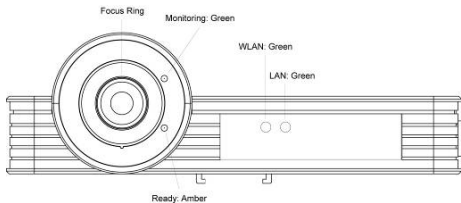
- OS: Windows 98SE, Me, NT, 2000, XP, Server 2003
- CPU: Intel Pentium III 750MHz or Celeron 1GHz above
- Memory Size: 128MB (256MB recommended)
- VGA Card Resolution: 800 x 600 or above

## 3. Hardware Installation

### 3.1. LED and Focusing

The Camera head and its focus ring allow you to modify the aim and focus of the Camera, to adjust the Camera's focus, rotate the dark focus ring. There are three or four LEDs indicating the camera status and networking status.

- **Monitoring** : When someone is viewing the camera, the LED will light.
- **Ready** : When the camera is powered on and ready for access, the LED will light on.
- **LAN** : When the Internet Camera is linked to the wired network, the LED light will turn on. The LED will flash when a video is transmitting or receiving through the wired network.
- **WLAN** (IC-1500Wg only) : When the Internet Camera is linked to a Wireless LAN AP or a Wireless Station, the LED light will turn on. The LED will flash when a video is transmitting or receiving through wireless network.

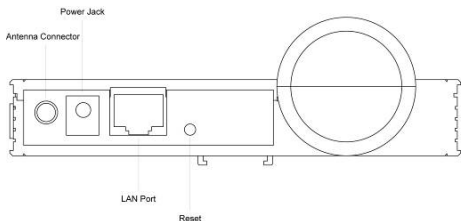


### 3.2. Camera Ports

The Camera features three ports and a Reset button.

- **Antenna Connector** : (IC-1500Wg only) Standard reverse SMA connector where any antennas with reverse SMA connector can connect to the Internet Camera.
- **Power** : Connect to the power adapter.
- **LAN** : Connect to the Ethernet network cable.
- **Reset** : If problems occur with your Internet Camera, press the reset button with a pencil tip (for less than 2 seconds) and the Internet Camera will re-boot itself, keeping your original configurations.

If you experience extreme problems or you forget your password, press the reset button for longer than 5 seconds to reset the Internet Camera to the factory default settings (warning: your original configurations will be replaced with the factory default settings).



### 3.3. Installation Procedure

1. Unpack the Internet Camera package and verify that all the items listed in the Chapter 1 are provided.
2. Connect the Internet Camera to your network by attaching the network cable from the switch/router to the UTP port of the Internet Camera.
3. Connect the power adapter to the Internet Camera and plug the power adapter to power outlet. The Internet Camera will be powered on. When the Internet Camera is ready, the Ready LED will show an orange color.

**Note:** It is highly recommended to use the power adapter shipped with the Internet Camera, do NOT use any other power adapter from any sources.

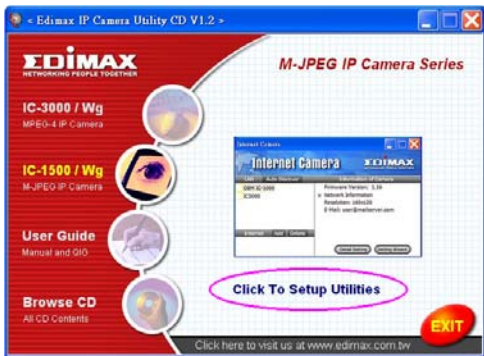
## 4. Software Installation

- Follow the simple steps below to run the Install Wizard to guide you quickly through the Installation process.

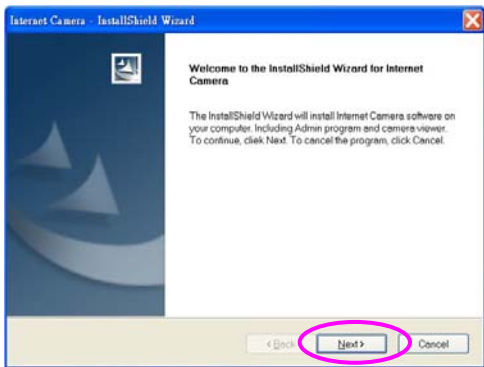
The following installation is implemented in Windows XP. The installation procedures in Windows 98SE/Me/2000/Server 2003 are similar.

- Insert the CD shipped along with the Internet Camera into your CD-ROM drive. The "Autorun.exe" program should be executed automatically. If not, run "Autorun.exe" manually from "Autorun" folder in the CD.
- The Install Wizard will show four selections, select the "**IC-1500 / Wg**" on left side if you want to install now or click "**Exit**" to install the program later.

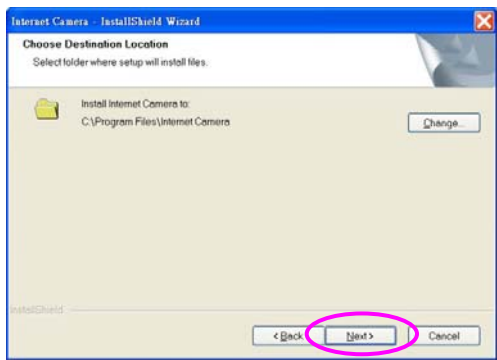
The following installation steps are the demonstration of “IC-1500 and IC-1500Wg, now please Click the “Click To Setup Utilities” to continue.



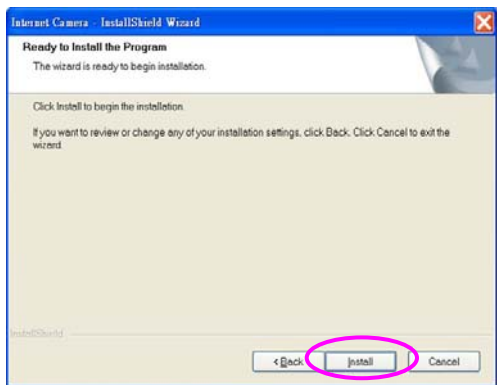
- The system will start the installation procedures. Click “Next” to continue installation.



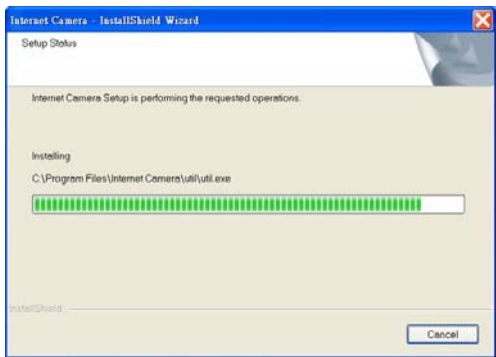
- If you wish to install the software program in an alternate location, click **“Change”**; otherwise click **“Next”** to move on to the next step.



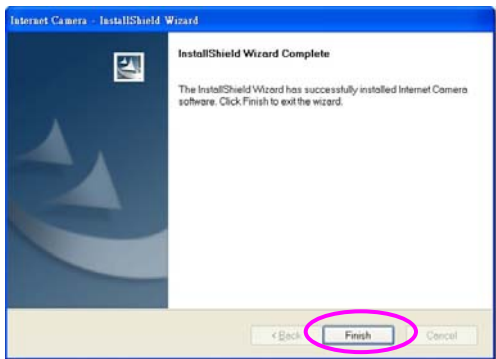
- Click **“Install”** to start installing the program.



- The system will install the program automatically.

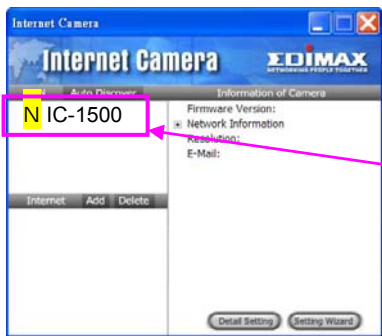


- Click “**Finish**” to complete the software installation.



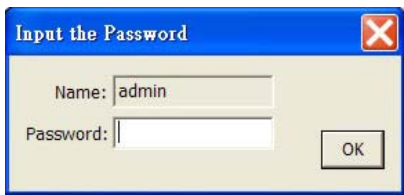


- When the installation is completed, the system will auto run "Administrator Utility". On the Internet Camera, first page, the cameras found in the network will be listed in the left window. Choose the one you want to configure and click "Setting Wizard" to proceed.



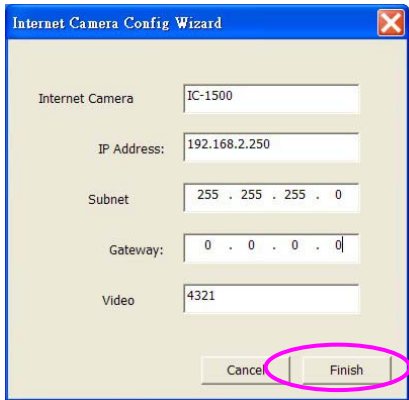
"N" means the camera is new and not configured.

- Please enter the default password "1234" and click "OK" to login to the IP setup page.



- Internet Camera is working through the network (TCP/IP Protocol). The IP address setting must be correct, or you cannot access the camera. The wizard program will detect the IP address status of your network automatically and suggest a free IP address for the Camera.

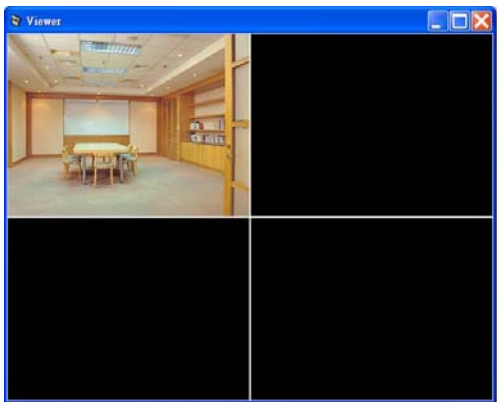
You can accept the suggested value or enter the value manually. If you enter the value manually, please be aware that the “**Subnet Mask**” must be the same for both the camera and the PC. Click “**Finish**” to apply the configuration.



- A window will pop up to ask you if you want to run the “**Camera Viewer**” and see the video of the Camera immediately. Select “OK” to run “**Camera Viewer**”.



- The “**Camera Viewer**” will show the video automatically. Congratulations, you can use the camera through the network to view the video from now on.



CE! FC

## Free Manuals Download Website

<http://myh66.com>

<http://usermanuals.us>

<http://www.somanuals.com>

<http://www.4manuals.cc>

<http://www.manual-lib.com>

<http://www.404manual.com>

<http://www.luxmanual.com>

<http://aubethermostatmanual.com>

Golf course search by state

<http://golfingnear.com>

Email search by domain

<http://emailbydomain.com>

Auto manuals search

<http://auto.somanuals.com>

TV manuals search

<http://tv.somanuals.com>