



# WP-S1000 Wireless Projector Server

User Manual

Version: 1.0 (November, 2007)

# Index

<b>1. PRODUCT INTRODUCTION .....</b>	<b>2</b>
1.1. Product Introduction and Features .....	2
1.2. Safety Information .....	4
1.3. Package Contents .....	5
1.4. Familiar With WP-S1000 .....	6
<b>2. INSTALL YOUR WIRELESS PROJECTOR SERVER (WPS).....</b>	<b>8</b>
2.1 Hardware Installation.....	8
2.2 Make software USB Flash (PnS Token) by yourself .....	11
2.3 Software Installation (Using the USB Flash) .....	13
2.3 Software Installation (From the WPS) .....	19
<b>3. FAMILIAR WITH PRESENTATION CLIENT SOFTWARE .....</b>	<b>24</b>
3.1 Presentation Mode .....	24
3.2 Video Playing Mode.....	25
3.3 Menu.....	26
<b>4. MAKE A NEW USB FLASH DISK WITH CLIENT SOFTWARE (PnS TOKEN) .....</b>	<b>27</b>
<b>5. USING WEB ADMINISTRATION INTERFACE .....</b>	<b>29</b>
5.1 Open the Web Administration Interface:.....	29
5.2 Download.....	31
5.3 Conference Control .....	32
5.4 Admin .....	34
5.5 System Status.....	36
5.6 Network Setup .....	37
5.7 Projection Setup .....	39
5.8 Change Passwords .....	40
5.9 Reset to Default.....	41
5.10 Firmware Upgrade.....	42
5.11 Reboot System .....	43
<b>6. APPENDIX .....</b>	<b>44</b>
6.1 Troubleshooting.....	44
6.2 Reset The Projector Server To Factory Default Setting .....	46
6.3 Set Up The Wireless Projector Server (WPS) To The Internet.....	47

# 1. PRODUCT INTRODUCTION

## 1.1. Product Introduction and Features

Thank you for purchasing this wireless projector server - WP-S1000! This projector server is an user-friendly presentation video server, you can connect this server to video projector or any CRT / LCD monitor with 15-pin D-sub video connector and support XGA resolution (1024 x 768 pixels), and share the projector or CRT / LCD monitor with every computer equipped with wired or wireless network connection.

### ➤ **Wired and Wireless Network Connection**

WP-S1000 projector server supports both wired and wireless network connection. High-performance 100Mbps wired Ethernet connection and 54Mbps wireless Ethernet connection provides smooth video and audio performance.

### ➤ **Audio Support**

Video alone is good enough, but with audio, your presentation will become more outstanding. WP-S1000 projector server also provides audio function. If your computer equips with audio interface, WP-S1000 is also capable to transmit the audio from your computer to external speaker or amplifier via built-in audio interface.

### ➤ **No more hassle cables**

WP-S1000 projector server only requires few connection cables - power, video, audio (optional), and network (optional). In most cases with computers equipped with wireless network interface, you only need power and video connection for this projector server, and you can get it installed within 1 minute!

### ➤ **Easy to Setup**

WP-S1000 projector server supports DHCP (Dynamic Host Configuration Protocol), which is very common nowadays. You only have to connect the network cable to the projector server, and WP-S1000 will setup required network parameters automatically!

It's also simple to install client software. The WP-S1000 projector server provides user-friendly web interface, and you can access the interface with Microsoft Internet Explorer, FireFox, or any other web browser. You can start software download from the web and get the software installed on your computer within 1 or 2 minutes! The web interface also supports 4 languages (English, Japanese, Traditional Chinese, and Simplified Chinese), to satisfy the needs of different people from different country.

The projector server package also comes with 2 sets of USB flash disk with PnS (Plug & Show) pre-installed client software. You can give the flash disk to anyone who needs to use client software to control the presentation, and he / she can start the software after the flash disk has inserted into his / her computer immediately, without downloading and installation!

### ➤ Security

All users who wish to access the controlling interface of WP-S1000 projector server must be verified - A random 4-digit login code will be displayed on the projector or CRT / LCD monitor which WP-S1000 is connected to, and the code is required to control the presentation. Web interface of WP-S1000 projector server is also protected by password, and you can change the password often to improve security.

If you care about wireless network connection, forget it now! WP-S1000 projector server supports high-level wireless encryption method, which will protect the connection and unauthorized computer, will never know the contents transferred via wireless connection.

## Main Features

- Provides wireless presentation without cable swapping.
- Provides one click conference control to allow host moderated meetings.
- Compatible with any type of projectors with standard VGA connectors
- Provides robust security with session login code and wireless WEP key
- Provides real time display of high quality images and applications
- Provides friendly web-based user interface for easy configuration
- Supports high display resolution SVGA, XGA and WXGA with 32bit colour.
- Supports Plug-n-Show (PnS) USB dongle software installation without CD Rom required.

## 1.2. Safety Information

Please follow the following safety instructions while you're using this wireless projector server, or you could damage this projector server and yourself.

1. THIS PROJECTOR SERVER IS NOT A TOY! Keep out of reach of children!
2. Do not place this wireless projector server in high-humid and / or hot environment, like bathroom or kitchen. Please refer to the specification of this wireless projector server to understand the environmental requirements of this wireless projector server.
3. This wireless projector server is designed to be used indoor. Do not use this wireless projector server at places like garden or any other outdoor environment.
4. Do not put any part or any component of this projector server into your body.
5. If any part or any component is dropped into water, return it to your dealer of purchase and ask for an examination; never use it again before it has been properly processed by certified Edimax technician or dealer.
6. If the projector server is dropped into water when it's powered on, DO NOT ATTEMPT TO TAKE IT BACK BY YOURSELF! Call a qualified electrical technician or us immediately for help.
7. If you want to hang this wireless projector server at high places, please make sure that the wireless projector server is properly secured. Falling down from high places will damage this wireless projector server, and may cause serious injury to people!
8. Do not drag any connected cord with force; the terminal and cord will be damaged.
9. Only use dry cloth with water to clean this wireless projector server; do not use alcohol or other chemical solution to clean this wireless projector server.
10. There's no user-serviceable part inside this wireless projector server; if the wireless projector server is not working properly, please contact the dealer of purchase to ask for help.
11. Do not put the wireless projector server and / or A/C adapter on paper, cloth, or other flammable materials. After hours of use, this projector server will become hot, and may cause flammable materials placed under it to burn.
12. If you smell something strange or even see smoke coming out from the wireless projector server or A/C adapter, disconnect the power cord immediately, and call your dealer of purchase for help.

### Linux Open-Source Code

Certain Edimax products include software code developed by third parties, which software code subject to the GNU General Public License ("GPL") or GNU Lesser General Public License ("LGPL"). Please see the [GNU](#) and [LPGL](#) Web sites to view the terms of each license.

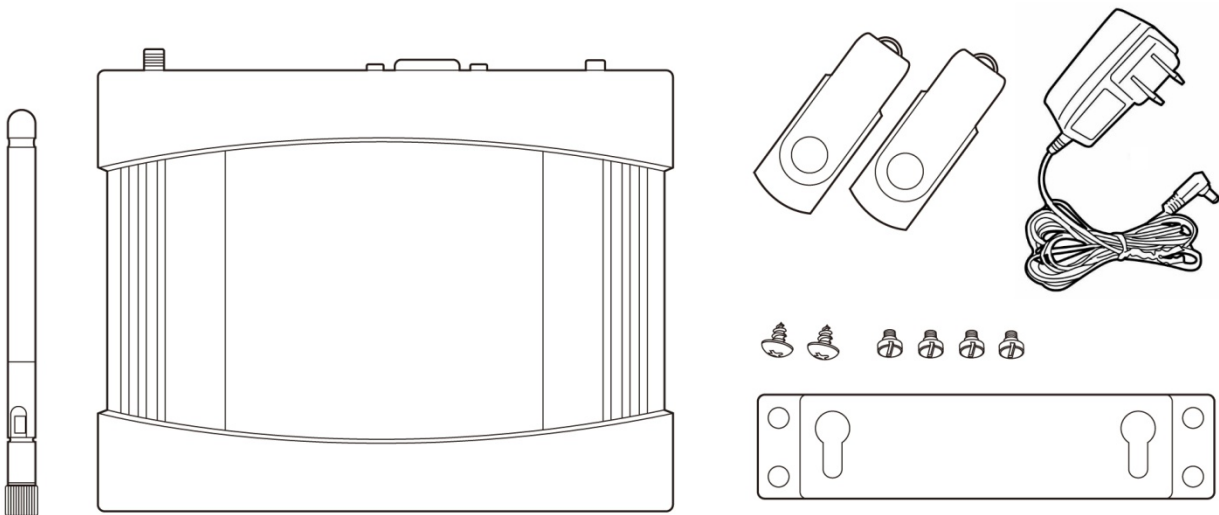
The GPL Code and LGPL Code used in Edimax products is distributed without any warranty and is subject to the copyrights of their authors.

For detail of the GPL Code and LGPL Code used in Edimax products, please refer to Edimax website <http://www.edimax.com> by product model number.

## 1.3. Package Contents

Before you unpack the package and continue with installation, please check the contents inside the package. If any item is missing, please return the package to the dealer of purchase.

- Wireless Projector Server (1 pc)
- Power Adapter (1 pc)
- Software USB Flash Disk (2 pcs)
- Antenna (1 pc)
- Mounting Bracket (1 pc, with 4 screws)
- Quick Installation Guide (1 pc)
- User Manual CD-ROM (1 pc)



## 1.4. Familiar With WP-S1000

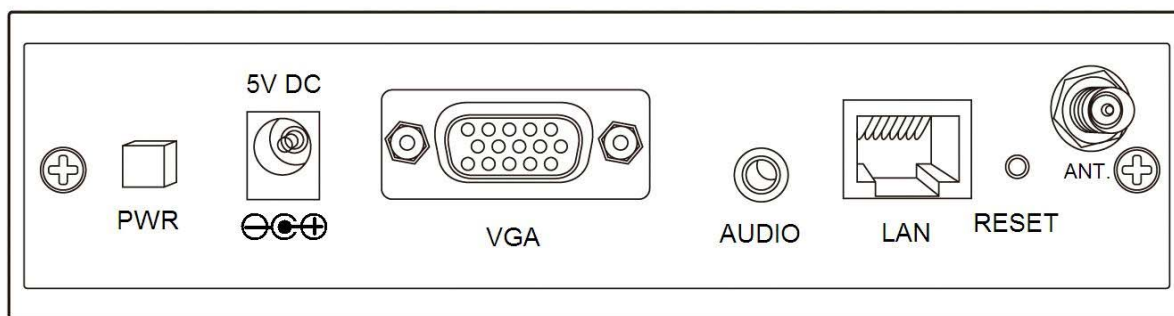
### Front View



These 3 LEDs indicate the system status of WP-S1000 projector server:

	STATUS	DESCRIPTION
POWER	ON	WP-S1000 projector server is powered on
	OFF	WP-S1000 projector server is powered off
WLAN	ON	Wireless LAN function is activated
	OFF	Wireless LAN function is deactivated
	FLASHING	Transferring data via wireless LAN interface
LAN	ON	Wired network is connected
	OFF	Wired network is disconnected
	FLASHING	Transferring data via wired LAN interface

## Back View



**PWR:** Push this button to switch on the WP-S1000 projector server (the 'POWER' led at the front panel will lit), push this button again to switch off the projector server.

**5V DC:** Connects to the power connector of power adapter. *WARNING: Only use the power adapter comes with product package, DO NOT replace with other power adapter!*

**VGA:** Connects to the video cable of your projector or CRT / LCD monitor (15-pin D-sub connector).

**AUDIO:** Connects to the audio cable of external speaker or audio amplifier. (3.5mm audio connector)

**LAN:** Connects to your local area network (LAN) by network cable. (RJ-45 network connector)

**RESET:** When the projector server is not working properly, you can use this button to clear all settings and restore the WP-S100 to factory default settings: Switch the projector server off, press and hold the RESET button using a pen or pin, then switch the projector server on. You should still press and hold 'RESET' button, after 10 seconds you can release the RESET button, and all settings in the projector server will be restored to factory default.

**ANT.:** Connects to the antenna, please only use the antenna in the product package. If you need to use other antenna to improve radio reception, please make sure the antenna you're using is designed for 2.4GHz radio band. (R-SMA connector)



## 2. INSTALL YOUR WIRELESS PROJECTOR SERVER (WPS)

**Step 1) Hardware Installation.**

**Step 2) Make software USB Flash (PnS Token) by yourself.**

**Step 3) Software Installation. Choose one of the following:**

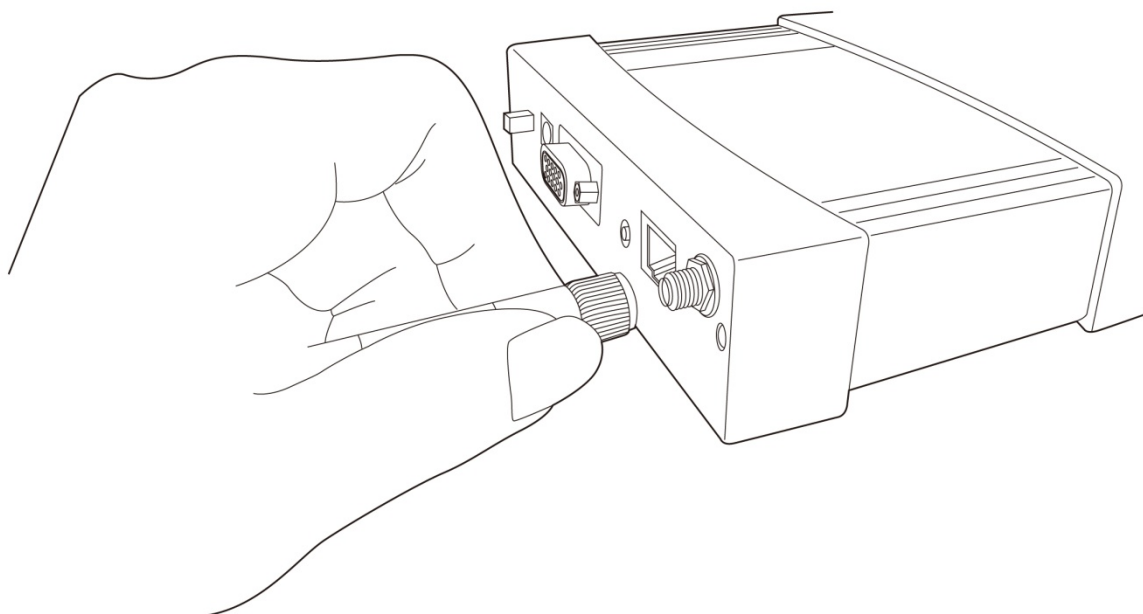
- i. Install the software using the USB Flash (Recommended)
- ii. Install the software from the WPS (2<sup>nd</sup> Option)

*Note: It's recommended to install the software using the USB flash (Fast and Easier).*

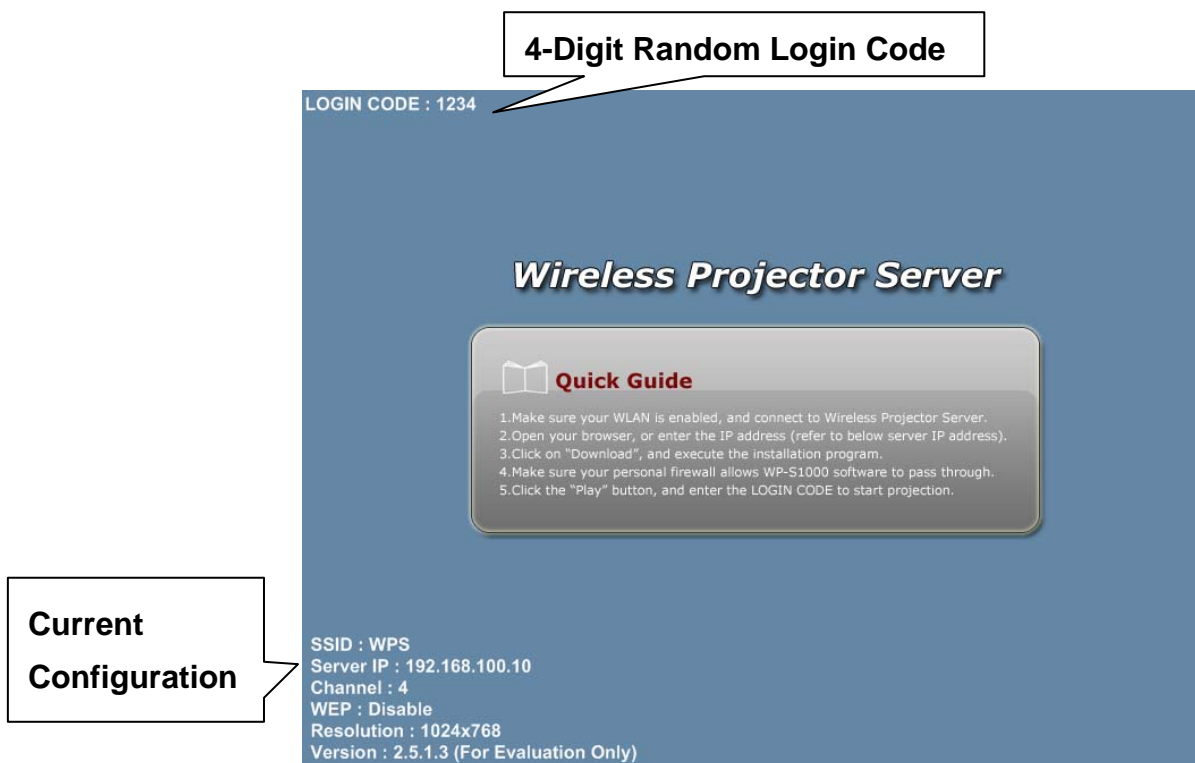
*However we only provide 2 USB flash disks, therefore we provide second option to install the software from the WPS. If you need more USB flash disks, you can build your own USB Flash disks, refer Chapter 4: Make a New USB Flash Disk with Client Software (PnS Token).*

### 2.1 Hardware Installation

1. Use the mounting bracket and screws to mount the Wireless Project Server (WPS) on the wall. (Skip this step if this is not required.).
2. Connect the supplied antenna to the antenna connector located at the back of the WPS (labeled as 'ANT'). Fasten and adjust the antenna to make it perpendicular to the ground.



3. Connect the video (VGA) cable of the projector to the video (VGA) port (labeled as 'VGA') located at the back of the WPS.
4. Connect the audio cable of external speaker (powered) or audio amplifier to the audio port (labeled as 'AUDIO') located at the back of the WPS. (Skip this step if this is not required.)
5. Connect the network cable to the network port (labeled as 'LAN') located at the back of the WPS. (Skip this step if you use wireless network connection).
6. Connect the power adapter to the power port of the WPS and then plug in the power adapter to the electrical power socket on the wall.
7. Power on the WPS by pressing 'PWR' button located at the back of the WPS. 'Power' LED will be lit when it is switched on.
8. Please switch on the projector, and you should be able to see the welcome screen of this projector server on projector or CRT / LCD monitor. A 4-digit login code and the IP address of projector server will be displayed, please remember them or write them down, you'll need these information when you need to connect the computer to this projector server by software.



The current configuration of this projector server will be displayed at the lower-left corner, they are:

**SSID:** The Service Set Identifier of the wireless interface of this projector server.

**Server IP:** The IP address of this projector server.

**Channel:** The radio channel this projector server is using.

**WEP:** The encryption method of the wireless network of this projector server.

**Resolution:** Current video resolution.

**Version:** The version number of the firmware of this projector server.

## 2.2 ) Make software USB Flash (PnS Token) by yourself

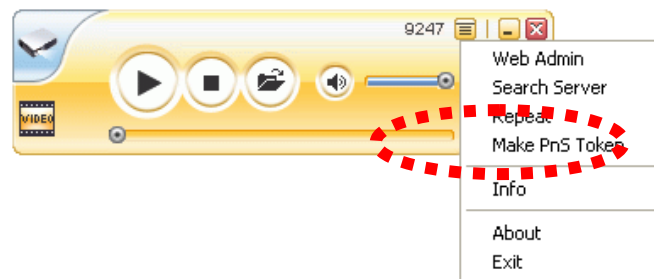
**\*\*Note: The Software USB flash disk is an option item. We recommend you to build the USB PnS Token from WP-S1000 with your USB flash disk/pen drive by yourself.**

Before start making an USB Flash Disk, please follow the instruction on Quick Installation Guide page 7 to 13 “**Step 2ii) Software Installation (From the WPS)**”. And then, follow the instruction below to build your USB flash disk/pen drive.

You'll need:

- An USB flash disk/pen drive with capacity larger than 5MB (formatted)
- Installed the presentation client software into the USB flash disk/pen drive

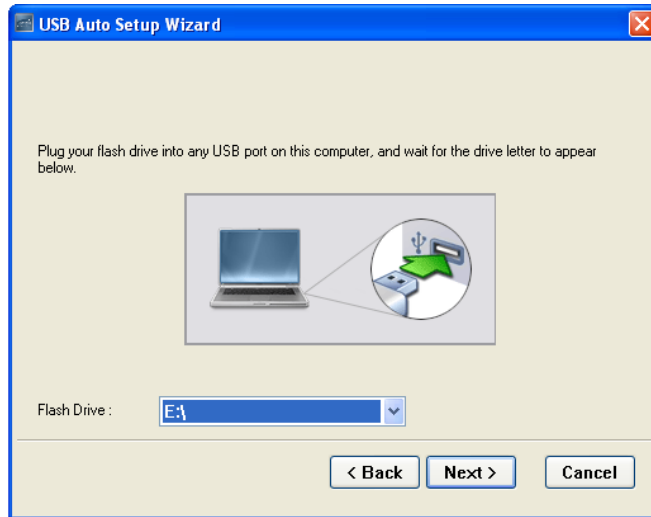
Insert the USB flash disk into your computer's USB port and start the presentation client software. Select 'Make PnS Token' from the menu of client software, then follows the instructions to build a new USB flash disk:



1. Click 'Next' when setup wizard appears.



2. Click 'Flash Drive' dropdown menu to select the drive letter that represents your USB flash disk. If you only have one flash disk inserted, setup wizard should be able to identify the USB flash disk automatically. If the USB flash disk is not correctly identified, please insert the USB flash disk once again, and click 'Next'.



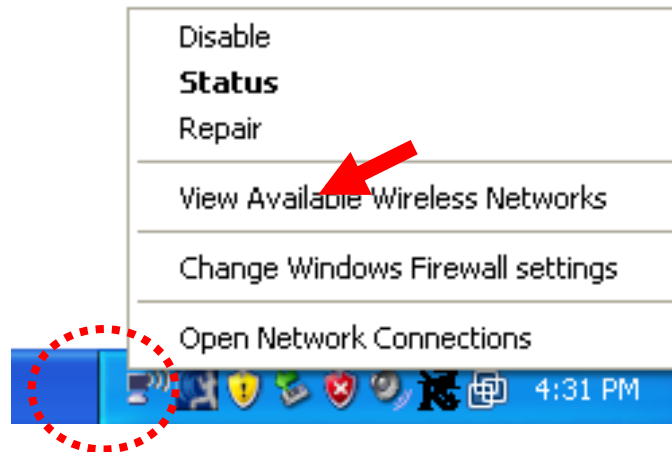
3. Setup wizard will copy all necessary files to the USB flash disk, please be patient, and do not remove the USB flash disk in this process. When you see this message, the wizard is completed successfully and the USB flash disk is ready to use. Click 'Finish' to exit and remove the USB flash disk.



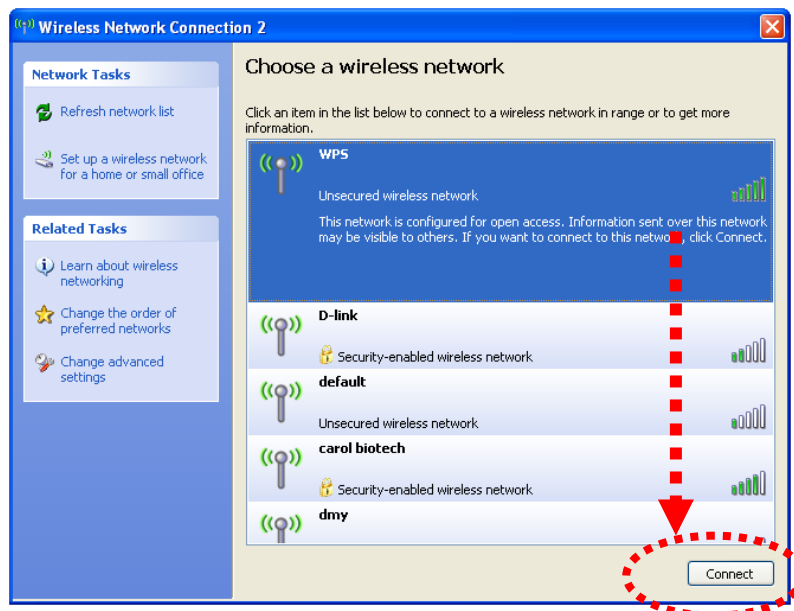
## 2.3 Software Installation (Using the USB Flash)

Install the software using the USB Flash Disk. (Please Skip Step 1 to 3 if you're using wired LAN connection).

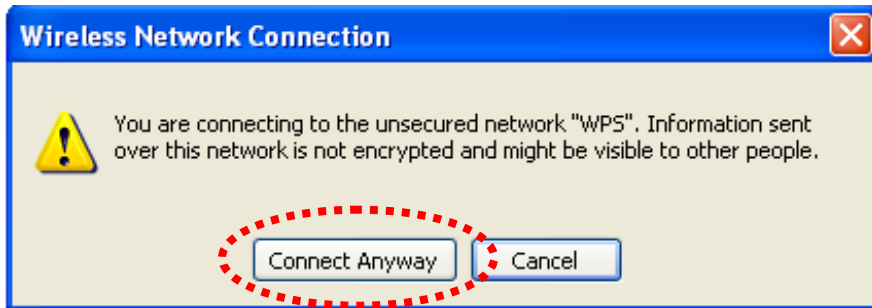
1. Right-click on wireless network icon located near the clock (usually located at the bottom-right corner of desktop), and select 'View Available Wireless Networks' to launch windows zero configuration utility.



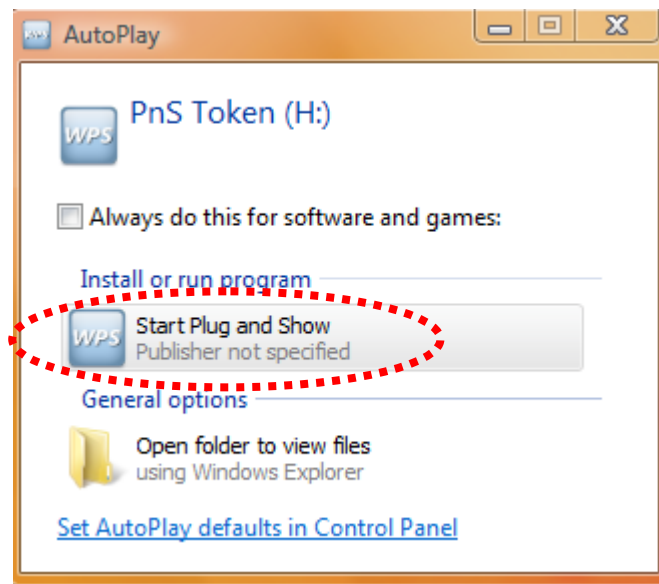
2. Locate a wireless network named 'WPS', select it and click 'Connect'.



3. Click 'Connect Anyway' when you see this message to continue.



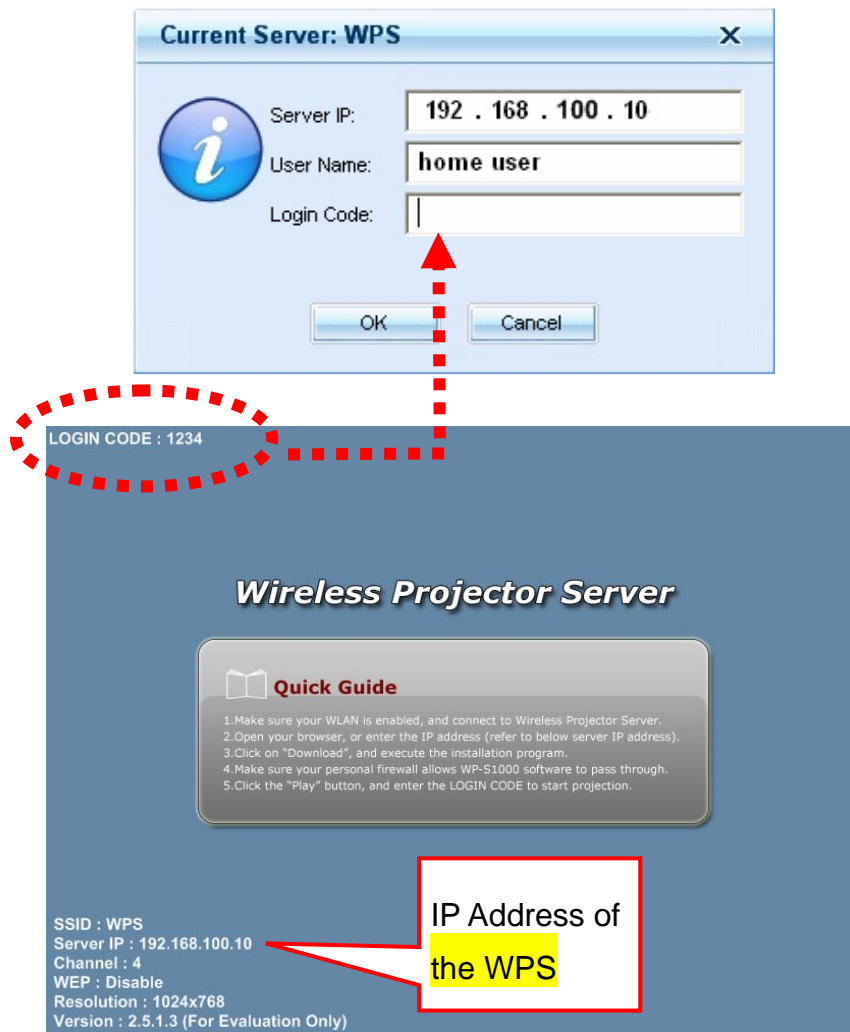
4. Insert the USB flash into the USB port of your computer. The computer will automatically search and locate the USB flash. You can run the Plug and Show software immediately by clicking on Start Plug and Show.



5. It will start searching for the WPS.



6. You'll be prompted to enter Login Code, which is a 4-digit number displayed at the upper-left corner of the WPS. Enter Login Code and click 'OK' to connect to the WPS.



7. Once you login successfully to the projector server, you will be connected and the WPS will project your PC screen to the projector automatically. You will find the Presentation Client Software appears in your computer.

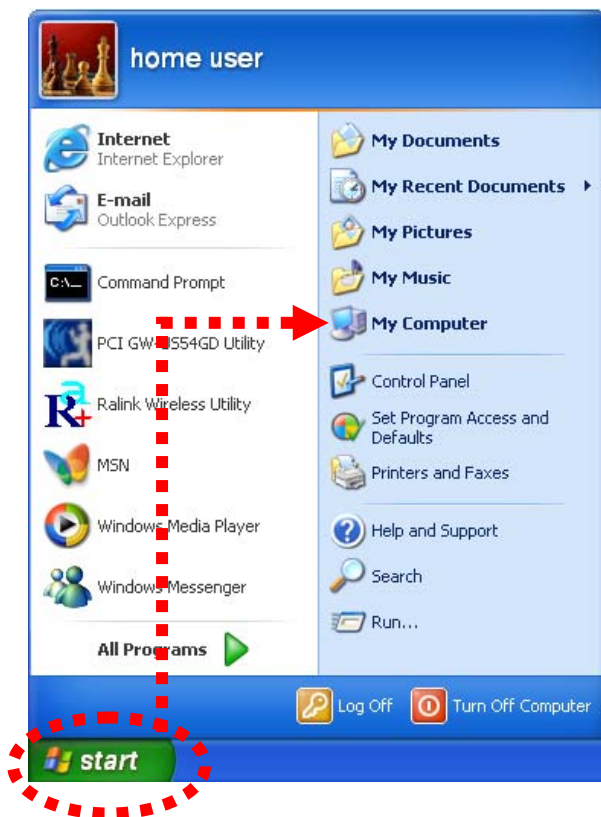


8. If you close the Presentation Client Software, the WPS will disconnect your computer and will not project your PC screen to the projector.

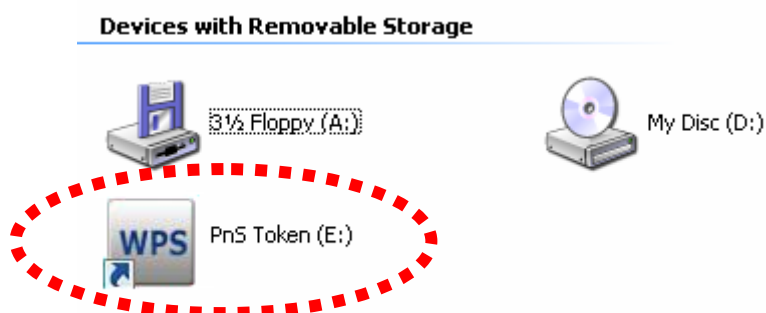


9. To re-connect to the WPS and re-project your PC screen, follow Step 10-13 below.

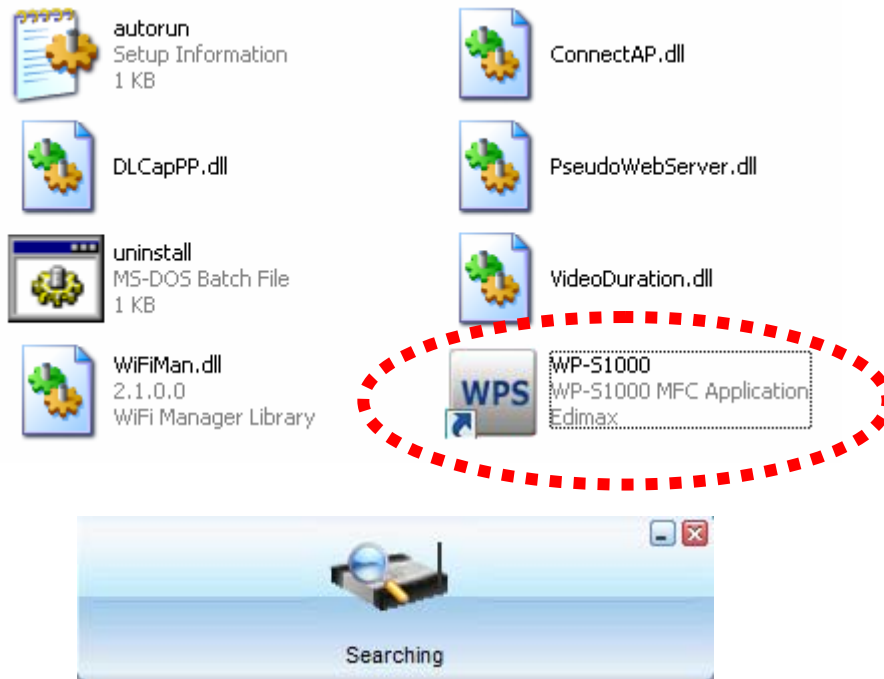
10. Click on 'Start' > 'My Computer'.



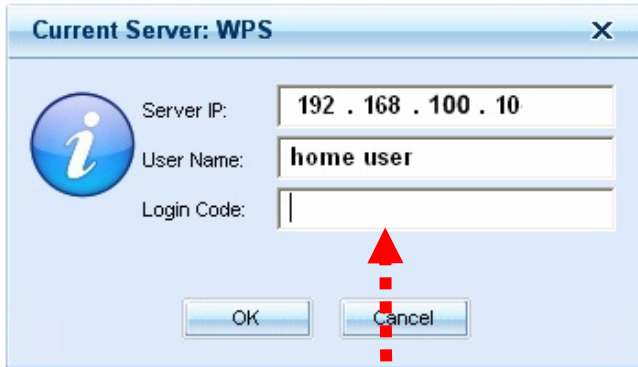
11. A removable storage named 'PnS Token' will be appeared in your computer's drive, double-click on it.



12. Then, double-click on '**WP-S1000**' icon, and it will start searching for the WPS.

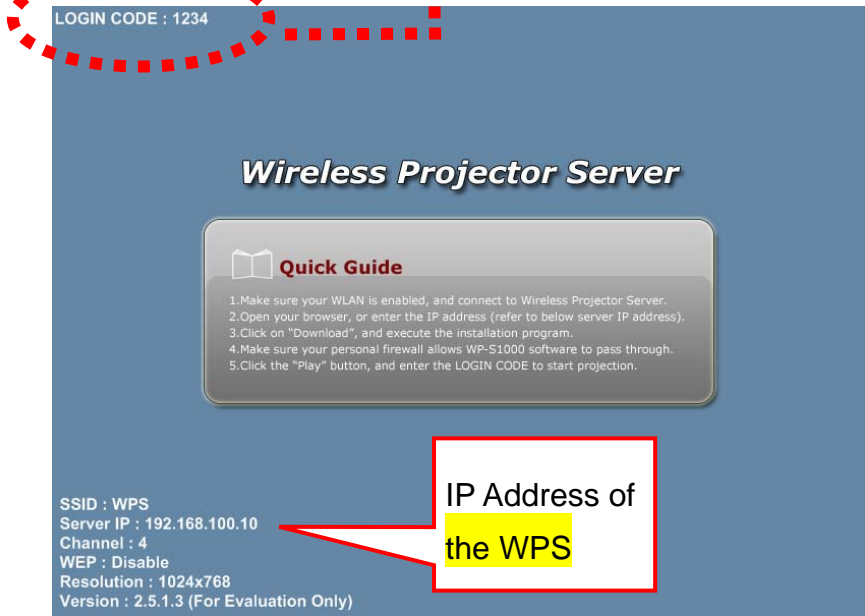


13. You'll be prompted to enter Login Code, which is a 4-digit number displayed at the upper-left corner of the WPS. Enter Login Code and click 'OK' to connect to the WPS. You will be connected and the WPS will project your PC screen to the projector automatically.



**NOTE: Login code WILL CHANGE when:**

- a. Projector server rebooted.**
- b. User logged out and when login again.**

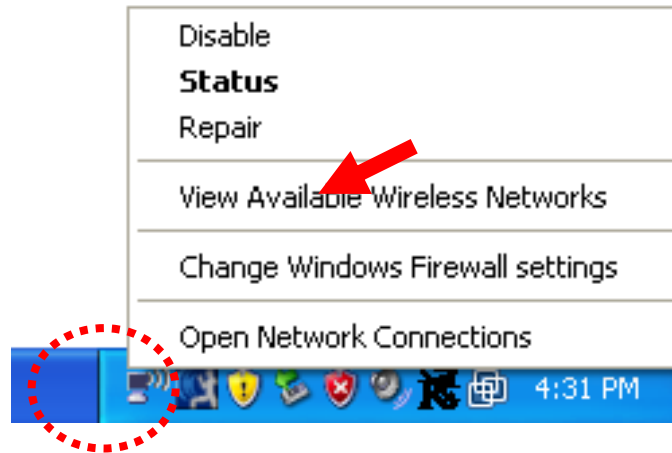


14. You need to plug-in the USB flash disk into your computer during your presentation. If you unplug the USB flash disk from your computer, you are unable to re-connect to the WPS once you close the Presentation Client Software.

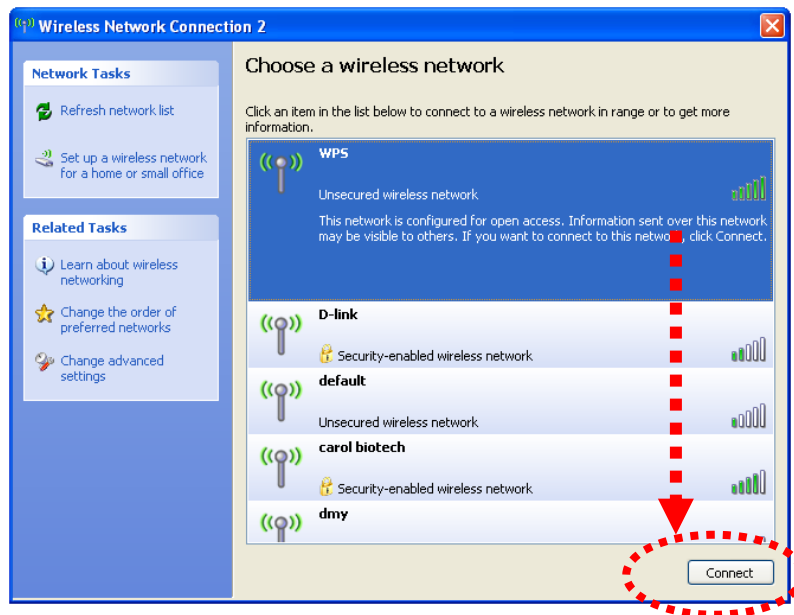
## 2.3 Software Installation (From the WPS)

You can install the software from the WPS via wired / wireless LAN connection into your computer. (Please skip Step 1 to 3 if you're using wired LAN connection):

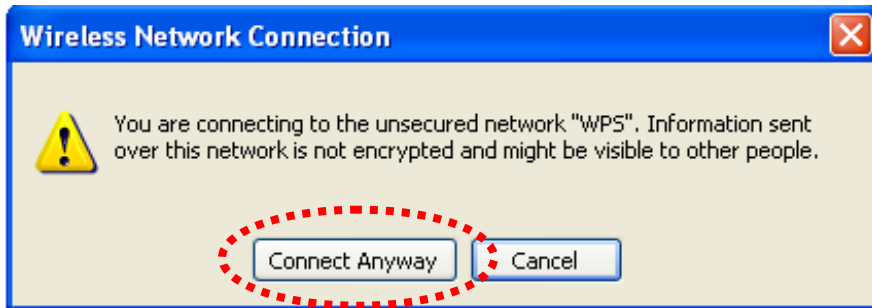
1. Right-click on wireless network icon located near the clock (usually located at the bottom-right corner of desktop), and select 'View Available Wireless Networks' to launch windows zero configuration utility.



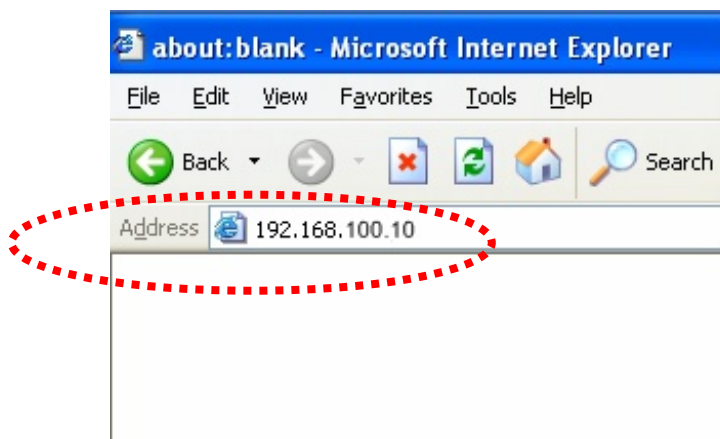
2. Locate a wireless network named 'WPS', select it and click 'Connect'.



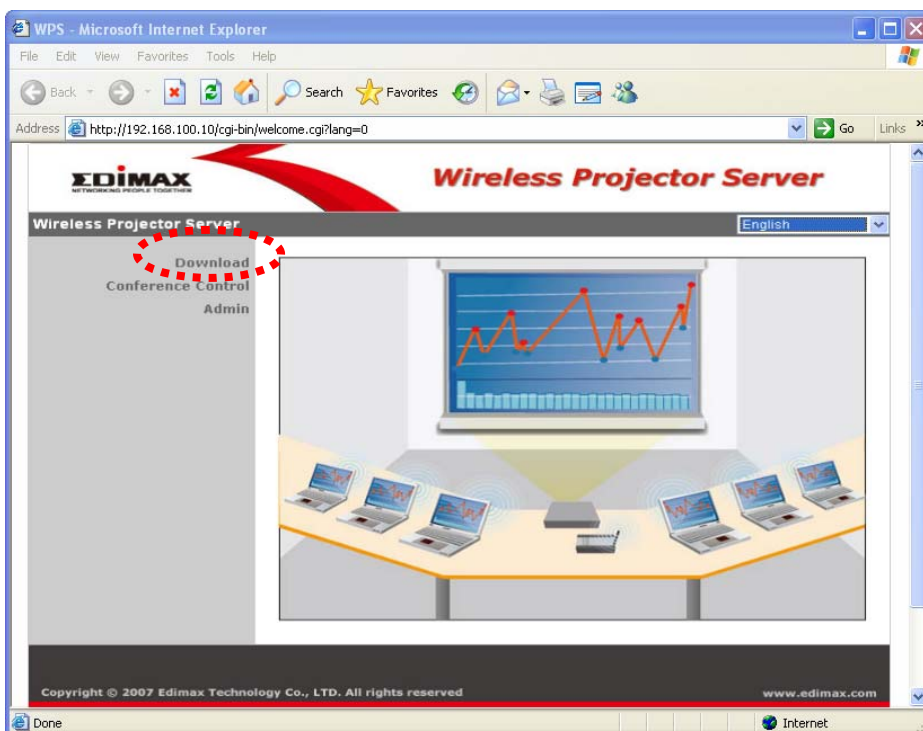
3. Click 'Connect Anyway' when you see this message to continue.



4. Launch Internet Explorer (or other web browser like FireFox), input '192.168.100.10' in address bar, and then press 'Enter' key.



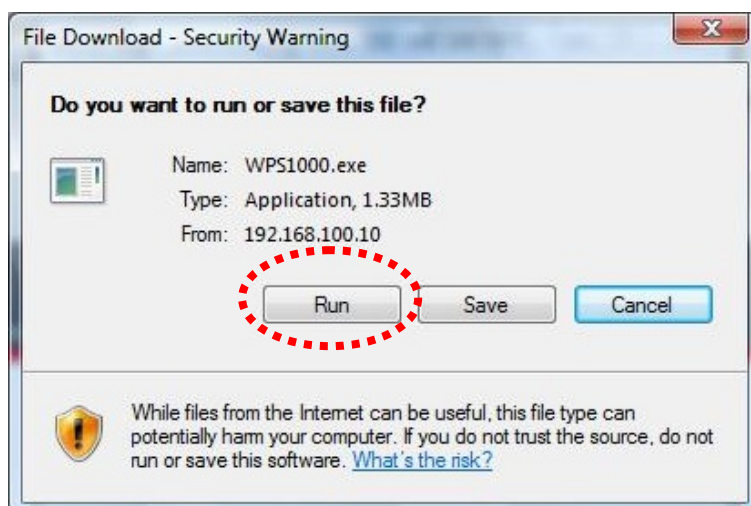
5. Click 'Download' to download projector server software.



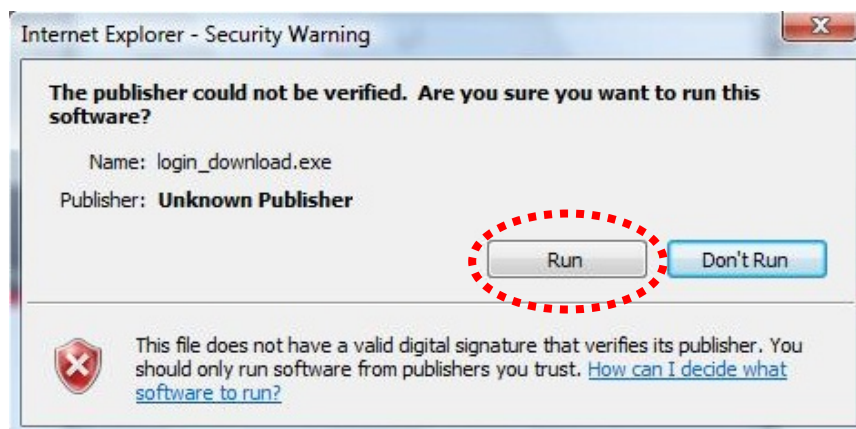
6. Click 'Download' to begin software download (leave password field blank).



7. Click 'Run' to start software installation after the download is completed.

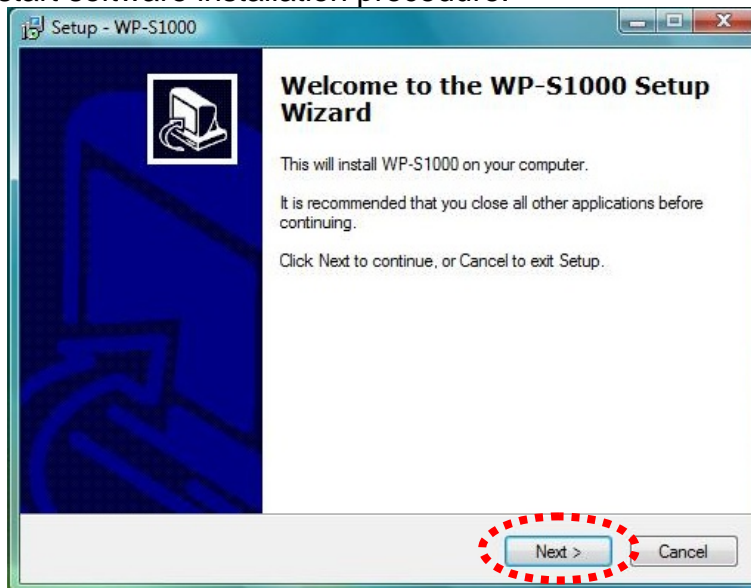


8. When you see this security warning, click 'Run' to continue.

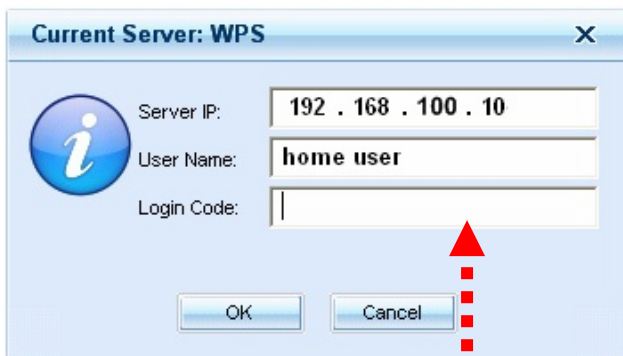




9. Click 'Next' to start software installation procedure.

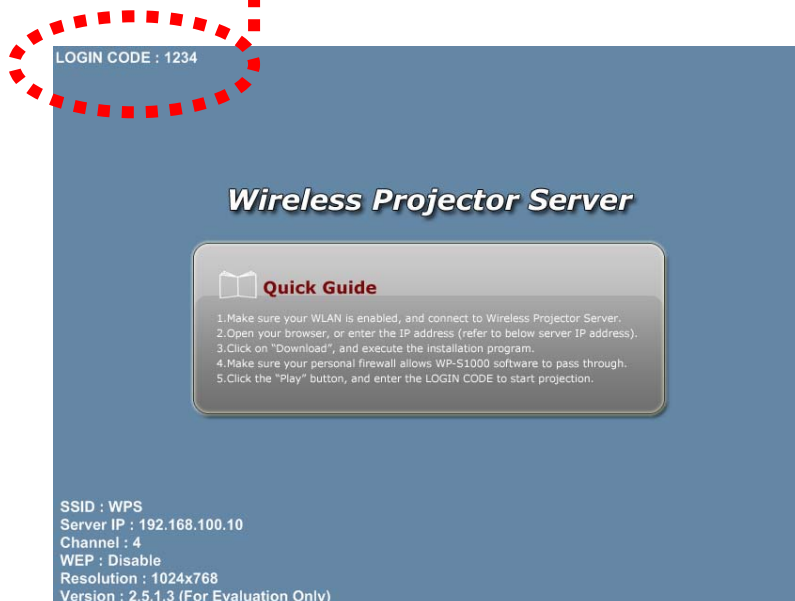


10. You'll be prompted to enter Login Code, which is a 4-digit number displayed at the upper-left corner of the WPS. Enter Login Code and click 'OK' to connect to the WPS. You will be connected and the WPS will project your PC screen to the projector automatically.



**NOTE: Login code  
WILL CHANGE when:**

- a. Projector server rebooted.**
- b. User logged out and when login again.**



11. You will find the Presentation Client Software appears in your computer.



Presentation Client Software.

12. If you close the Presentation Client Software, the WPS will disconnect your computer and will not project your PC screen to the projector.

13. To re-connect to the WPS and re-project your PC screen. Run the Presentation Client Software manually from your computer.

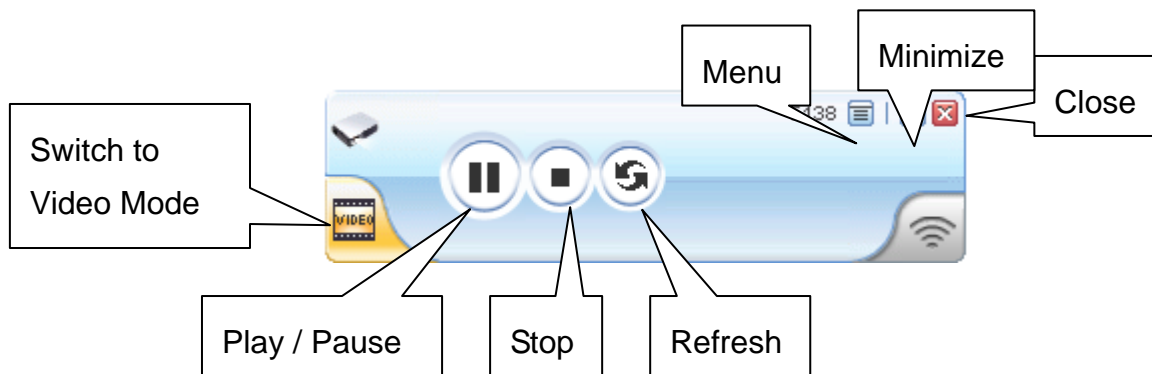
14. To run the Presentation Client Software, click on Start>All Programs>WP-S1000>, then click on WP-S1000.



### 3. FAMILIAR WITH PRESENTATION CLIENT SOFTWARE

#### 3.1 Presentation Mode

Once you login successfully to the projector server, you will be connected and the WPS will project your PC screen to the projector automatically. You will find the Presentation Client Software appears in your computer.



Here are descriptions of all buttons:

**Play / Pause:** Click this button to toggle play / pause mode; when in play mode, the display of WP-S1000 projector server is synchronized with the display content of your computer; when in pause mode, the display of WP-S1000 projector server freezes and is not synchronized with the display content of your computer.

**Stop:** Click this button to disconnect your computer from WP-S1000 projector server. You can click Play / Pause button to reconnect again, if the project server is not controlled by other computer.

**Refresh:** If the display content of WP-S1000 and your computer is not synchronized, you can click this button to refresh display.

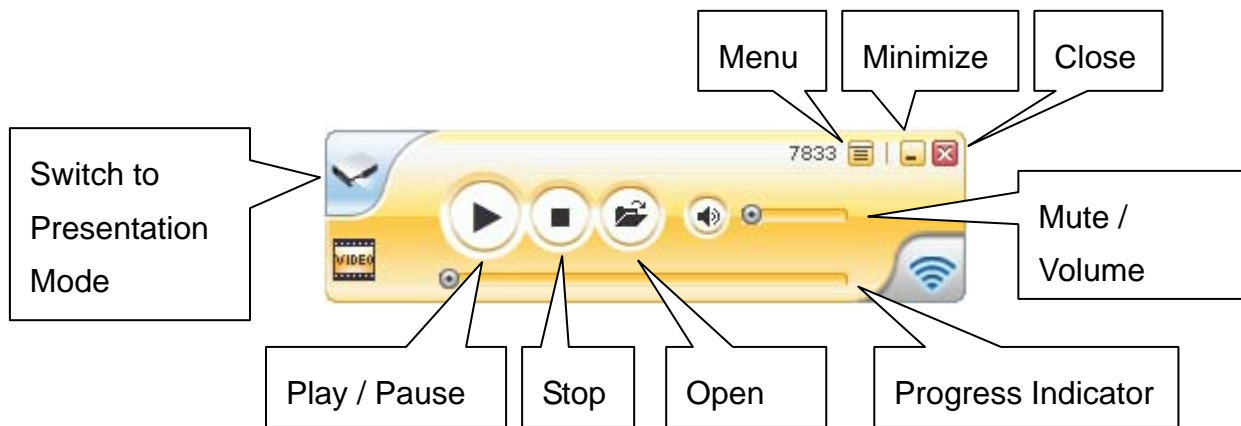
**Close:** Click this button to close client software, your computer will be disconnected from WP-S1000 projector server. If you want to reconnect again, you have to launch client software again and input correct login code.

**Minimize:** Minimize (hide) client software window, so it will not be shown during presentation.

**Menu:** Click this button for menu (for more functions of client software).

**Switch to video mode:** Click to switch to video playing mode (see next page).

## 3.2 Video Playing Mode




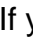
Here are descriptions of all buttons:

**Play / Pause:** Click this button to toggle video play / pause mode. After a video file has been loaded, click this button to play the video; you can click this button during video play, to pause playing video.

**Stop:** Stop playing video.

**Open:** Click this button to open a video file. You'll be prompted to provide the location of video file. Supported video file formats are: MPG / MPEG, DAT, VOB, WMV9, ASF, DivX, and Xvid.

**Progress Indicator:** When video is playing, the progress indicator will move from left to right, to show the progress of video play. You can also drag the progress indicator to move to specific position within video file.

**Mute / Volume:** You can click mute button  to mute audio, and the icon will be displayed as . To resume, click mute button again. If you want to adjust volume, drag volume control to left will decrease volume, and drag volume control to right will increase volume.

**Close:** Click this button to close client software, your computer will be disconnected from WP-S1000 projector server. If you want to reconnect again, you have to launch client software again and input correct login code.

**Minimize:** Minimize (hide) client software window, so it will not be shown during presentation.

**Menu:** Click this button for menu (for more functions of client software).

**Switch to Presentation Mode:** Return to presentation mode (see previous page).

### 3.3 Menu

By clicking the 'Menu' of the presentation client software, a menu will appear:



These functions in the menu will help you to use more functions of this projector server, and the descriptions of these functions are listed below:

**Web Admin:** Launch your computer's default web browser to enter the web administration menu of this projector server. For detailed instructions for web administration menu, please go to Chapter 5.

**Search Server:** Search for WP-S1000 projector server on the local network. Please note that if you're currently connected to any projector server, you'll be disconnected first.

**Repeat:** Select this item and a 'v' sign will appear at the front of 'Repeat' item, which will activate video repeat mode (the video will be played again from the beginning when it ends). To cancel repeat, select this item again, and make sure the 'v' sign disappeared (This function is only applied for Video Playing Mode).

**Make PnS Token:** If you lost the client software USB flash disk, you can use this function to build a new one with your own USB flash disk/pen drive. For detailed instructions, please refer to Chapter 4.

**Info:** Shows the model name, IP address, and current login code of the projector server.

**About:** Shows the information about the presentation client software.

**Exit:** Disconnect from projector server and close the client software.

## 4. MAKE A NEW USB FLASH DISK WITH CLIENT SOFTWARE (PnS TOKEN)

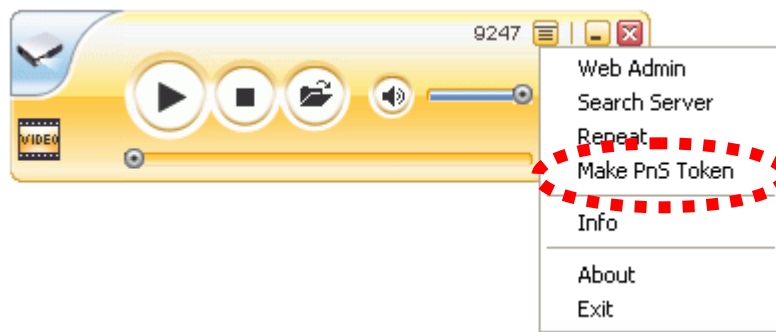
We only provide 2 USB flash disks. If you need more USB flash disks, you can build it using your USB flash disk/pen drive.

If you lost the USB flash disk that comes with your projector server, you can rebuild one with your own USB flash disk/pen drive too.

You'll need:

- An USB flash disk/pen drive with capacity larger than 5MB (formatted)
- Installed the presentation client software into the USB flash disk/pen drive

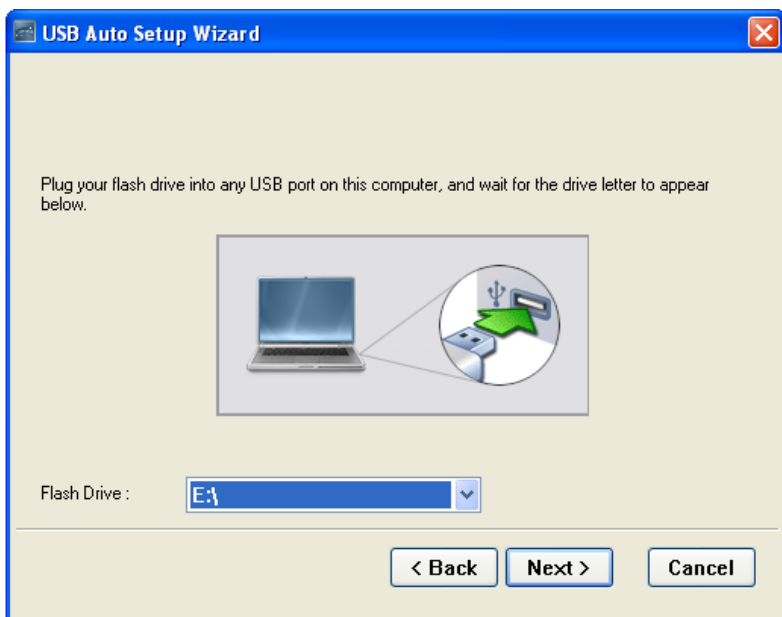
Insert the USB flash disk into your computer's USB port and start the presentation client software. Select 'Make PnS Token' from the menu of client software, then follows the instructions to build a new USB flash disk:



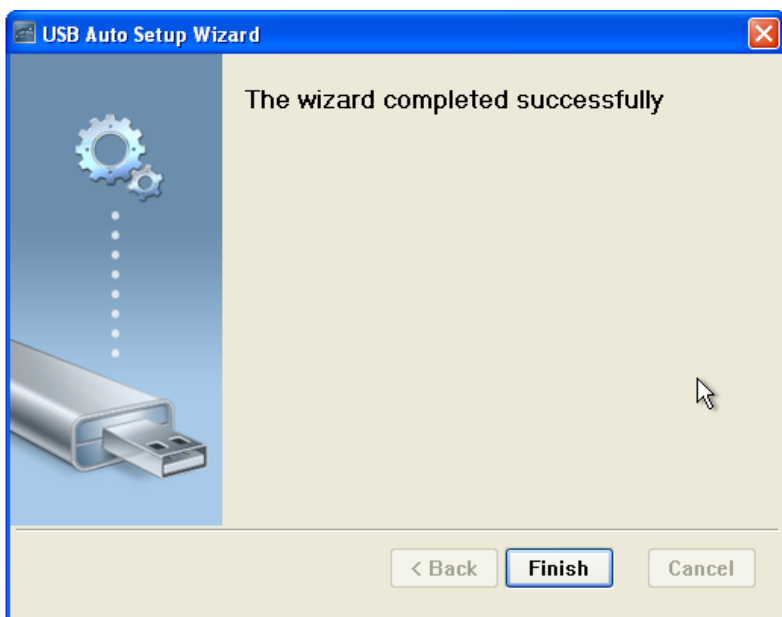
1. Click 'Next' when setup wizard appears.



2. Click 'Flash Drive' dropdown menu to select the drive letter that represents your USB flash disk. If you only have one flash disk inserted, setup wizard should be able to identify the USB flash disk automatically. If the USB flash disk is not correctly identified, please insert the USB flash disk once again, and click 'Next'.



3. Setup wizard will copy all necessary files to the USB flash disk, please be patient, and do not remove the USB flash disk in this process. When you see this message, the wizard is completed successfully and the USB flash disk is ready to use. Click 'Finish' to exit and remove the USB flash disk.



## 5. USING WEB ADMINISTRATION INTERFACE

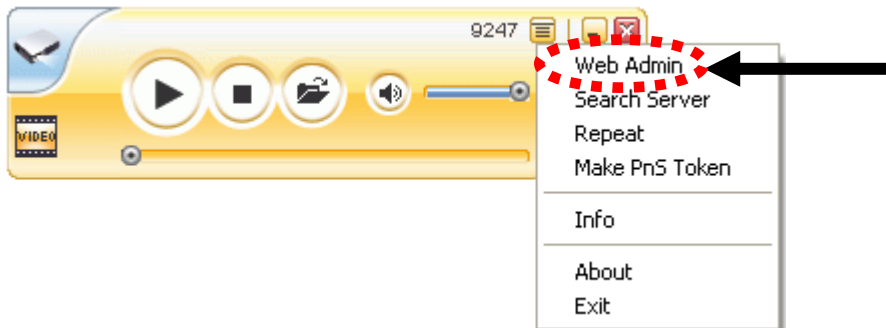
There are 2 Administrator Accounts in the Web Administration Interface> Conference Control and Admin.

**Conference Control** – To control the process of presentation when more than one presenter are connected.

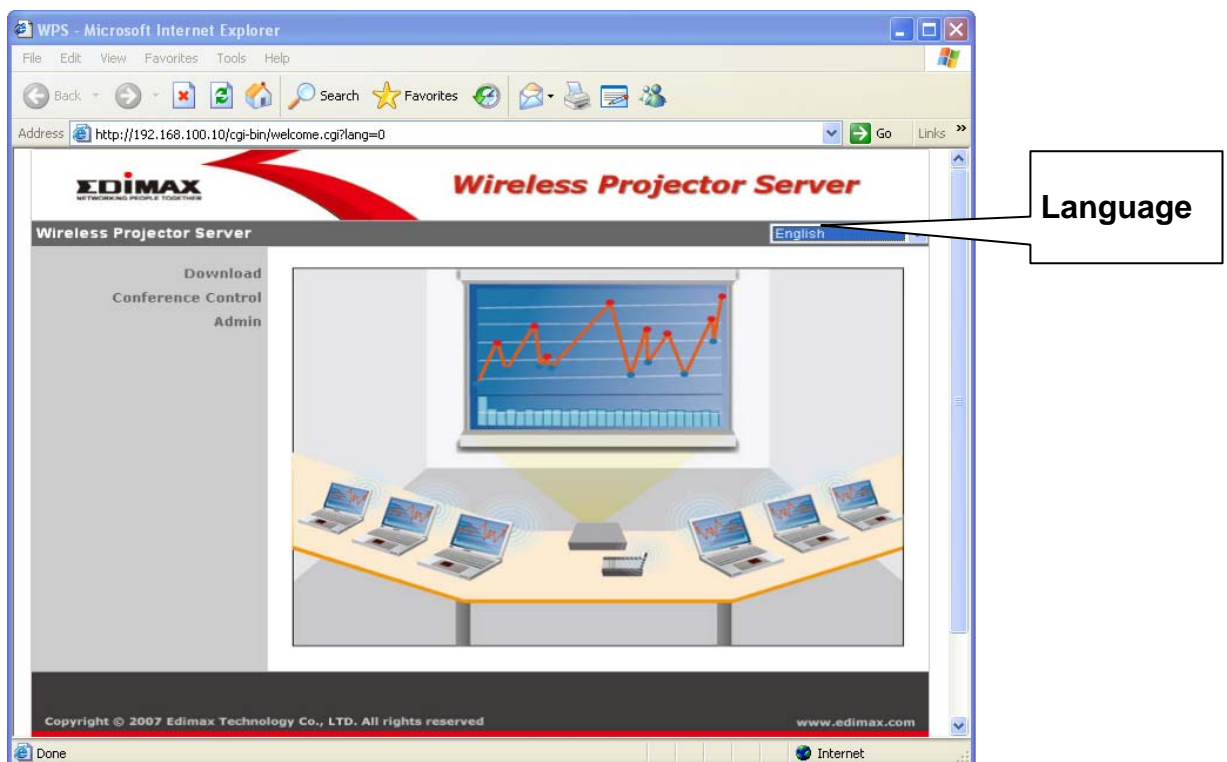
**Admin** – To configure WPS settings, network setup and perform firmware upgrade.

### 5.1 Open the Web Administration Interface:

1. Click 'Web Admin' from the menu of presentation client software:



2. The following administration interface will be shown:



Here are descriptions of every setup item:

**Download:** Download presentation client software. No password is required to download the software by default; however, you can setup a password for file download in 'admin' menu. (Refer Page 17 for downloading software from the WPS).

**Conference Control:** If there are more than one users logged onto projector server, you can arrange the presentation by selecting the active presenter.

*Default password of conference control menu is 'admin'.*

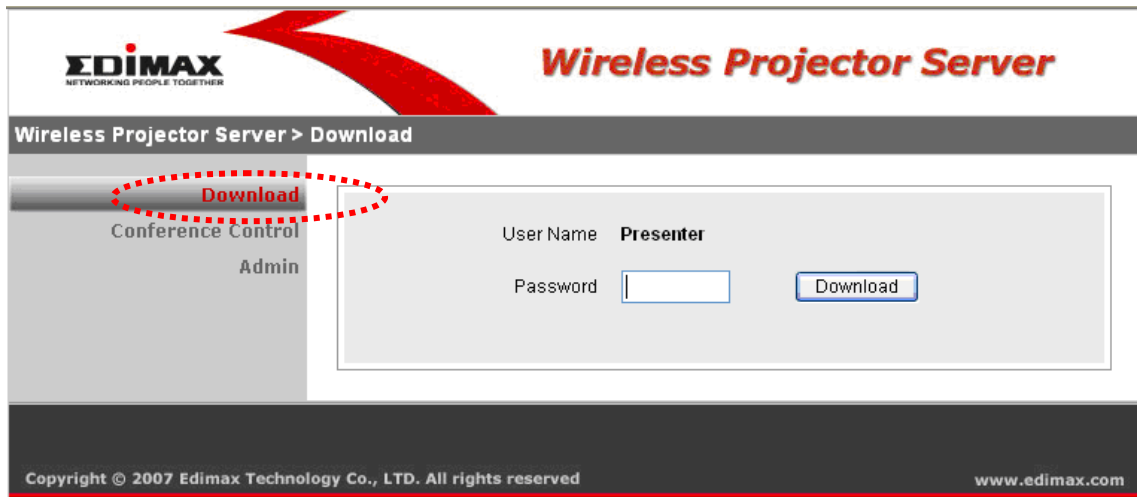
**Admin:** You can configure network and other parameters of this projector server, and perform firmware upgrade.

*Default password of admin menu is 'admin'.*

**Language:** Change web administration interface's language. Available languages are: *English, Japanese, Traditional Chinese, and Simplified Chinese.*

## 5.2 Download

Click 'Download' to enter client software download page, and click 'Download' to start download. Password is not required by default; however, you can setup a password for file download in 'admin' menu. **(Please refer to Page 17)**





## 5.3 Conference Control

When you have more than one presenter, you can enter this menu and control the process of the presentation by deciding who is controlling the presentation.

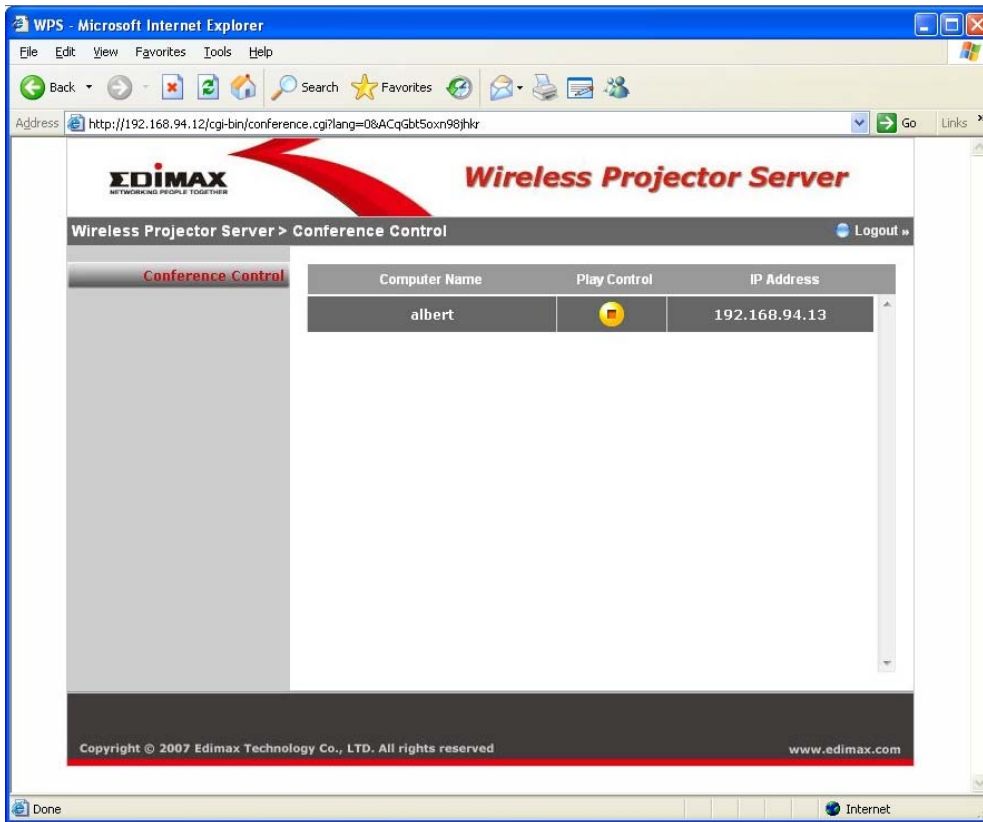
You can also see the computer's name of every presenter. Please note that every presenter can change the name by using a different user name when they login. You can use the login name to identify the presenters.



1. Click on Conference Control. Login default password is 'admin'.



The screenshot shows the Edimax Wireless Projector Server interface. At the top left is the Edimax logo with the tagline 'NETWORKING PEOPLE TOGETHER'. To the right is the title 'Wireless Projector Server'. Below this is a navigation bar with 'Wireless Projector Server > Conference Control'. On the left side, there is a menu with 'Download', 'Conference Control' (circled in red), and 'Admin'. The main area contains a login form with 'User Name' set to 'Controller', a 'Password' input field, and a 'Login' button. The footer contains copyright information and the website URL 'www.edimax.com'.

**Default password is 'admin'.**

2. All connected presenter(s) will be shown.



The active presenter has a  icon shown at his / her 'Play Control' field. If you want to stop this presenter from presenting, click the  icon.

All inactive presenters will have a  icon shown at their 'Play Control' field. If you want to make another presenter as active presenter, click the  icon. The former active presenter will be stopped and replaced by the new presenter.

If you want to leave conference control menu, click 'Logout'.

NOTE: Active presenter will have a flashing icon on his / her client software:



**When this icon flashes, the user of this client software is controlling the presentation**

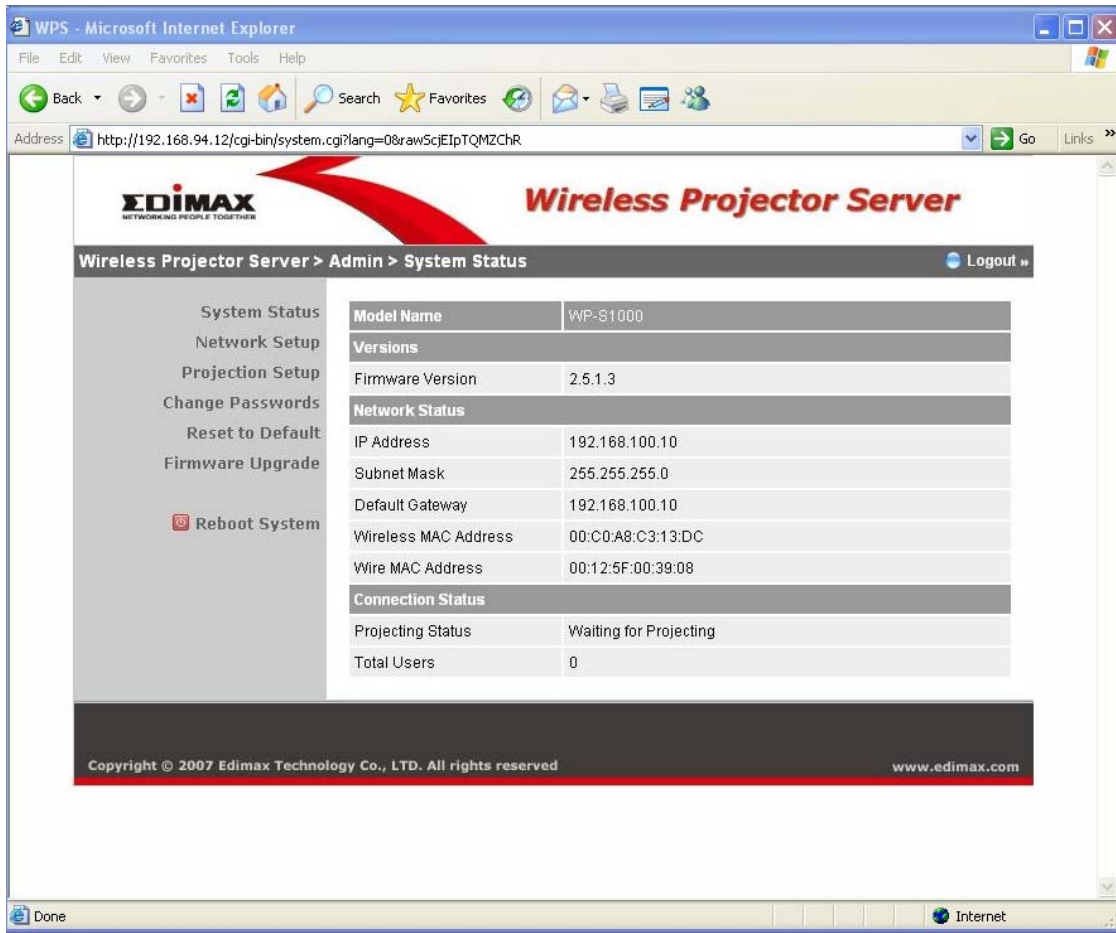
## 5.4 Admin

1. You can configure network and other parameters of this projector server, or upgrade system firmware. To enter admin menu, click 'admin'. Enter password as '**admin**', and click 'Login' button.



Default password is '*admin*'.

2. After logged in, you'll see the following administration menu:



All setup items are listed on the left, and their detailed descriptions will start from next page. If you want to leave administration menu, click 'Logout'.

## 5.5 System Status

This page provides various information and the status of WP-S1000 projector server, like firmware version, network settings, and connection status. If you need help from online technician or dealer of purchase for help, the information will help.

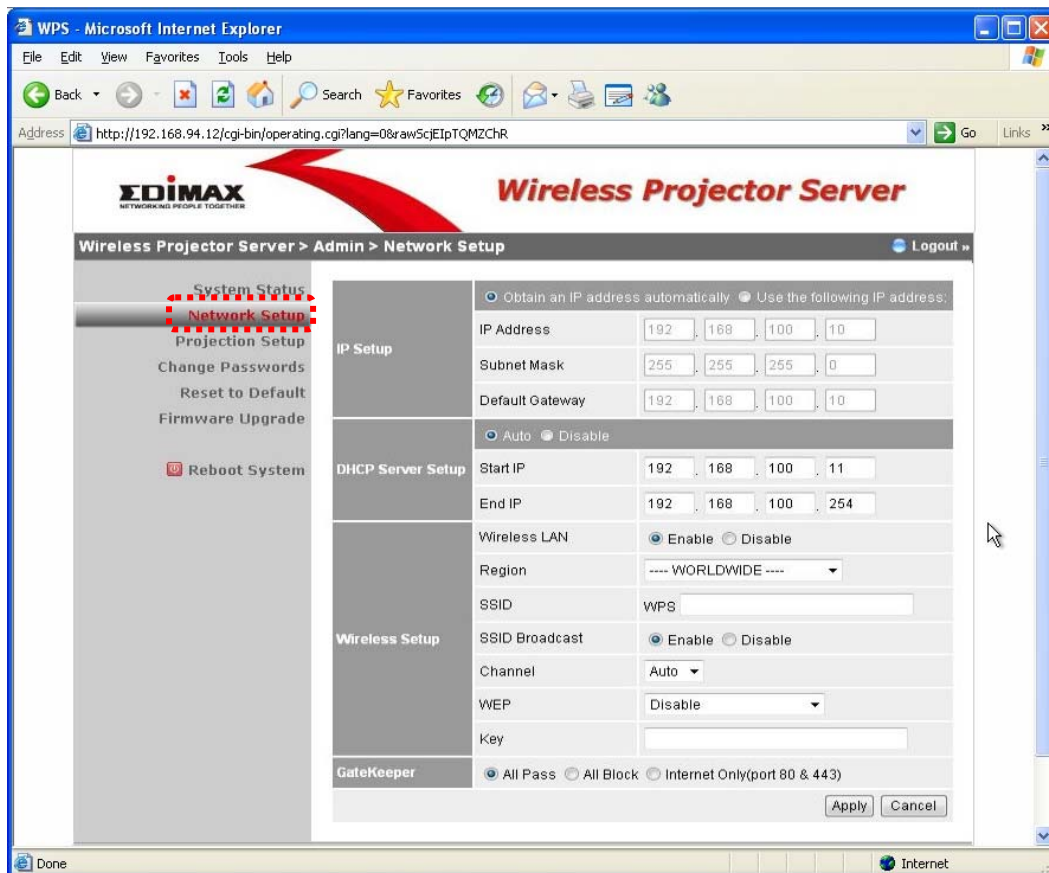
The screenshot shows the 'System Status' page of the Edimax Wireless Projector Server. The browser window title is 'WPS - Microsoft Internet Explorer' and the address bar shows 'http://192.168.94.12/cgi-bin/system.cgi?lang=0&raw5cJElpTQM2CHR'. The page header includes the Edimax logo and the text 'Wireless Projector Server'. The main content area is titled 'Wireless Projector Server > Admin > System Status' and includes a 'Logout' link. A left-hand navigation menu lists several options: 'System Status' (highlighted with a red dashed box), 'Network Setup', 'Projection Setup', 'Change Passwords', 'Reset to Default', 'Firmware Upgrade', and 'Reboot System'. The main content area displays the following information:

Model Name	
Model Name	WP-S1000
Versions	
Firmware Version	2.5.1.3
Network Status	
IP Address	192.168.100.10
Subnet Mask	255.255.255.0
Default Gateway	192.168.100.10
Wireless MAC Address	00:C0:A8:C3:13:DC
Wire MAC Address	00:12:5F:00:39:08
Connection Status	
Projecting Status	Waiting for Projecting
Total Users	0

At the bottom of the page, there is a copyright notice: 'Copyright © 2007 Edimax Technology Co., LTD. All rights reserved' and the website 'www.edimax.com'.

## 5.6 Network Setup

You can setup network parameters in this page.



Description of every setup items are listed below:

Obtain an IP address automatically	Choose this item to obtain the IP address for this projector server automatically from the DHCP server on local network. If you don't have a DHCP server on local network, you have to select 'Use the following IP address' and setup the IP address manually.
Use the following IP address	Choose this item to setup a fix IP address for this project server manually. You have to input IP address, subnet mask, and the IP address of gateway manually. If you don't know how to input these values, please ask network administrator.
DHCP Server Setup	You can choose to enable or disable the built-in DHCP server for client computers. You can choose 'Auto' to let WP-S1000 projector server decide by itself, or choose 'Disable' if you want to use other DHCP server on the network. Please note that if you have clients using wireless network to connect to this projector server, please choose 'Auto'. If DHCP server is enabled, please check your IP range ('Start IP' and 'End IP').

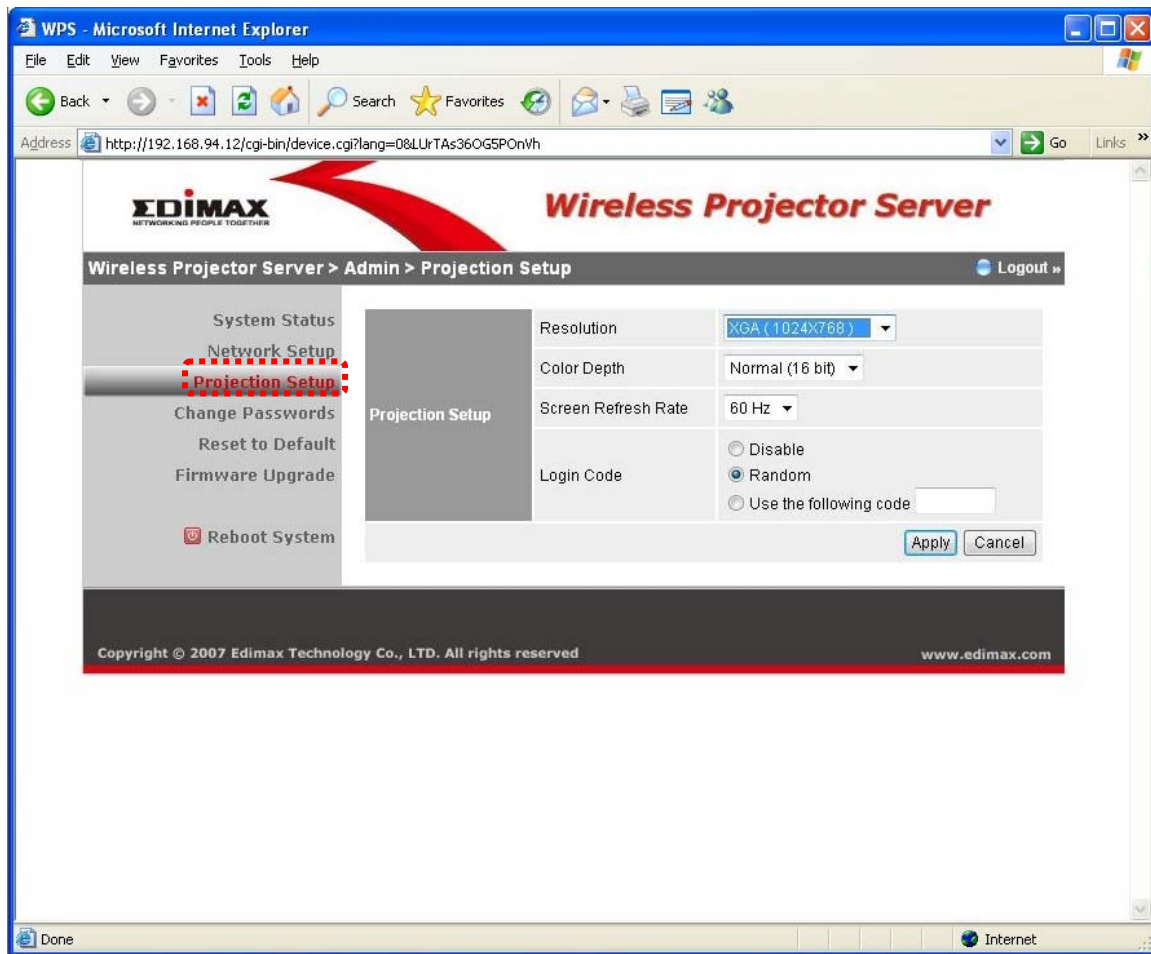
Wireless Setup	<p>You can configure the wireless network. Available settings are:</p> <p>Region: Select the country of your residence, this will affect available wireless radio channel. Selecting a different country may offend local radio regulation and cause legal problem.</p> <p>SSID: You can change the Service Set Identifier (SSID, the name used to identify this projector server from other wireless devices) by input another SSID here. Default SSID is WPS. (No space is allowed)</p> <p>Channel: You can change the channel number of wireless network from dropdown menu here. Available channels will vary depending on the region you selected. You can select 'Auto' to let projector server decides which channel to use.</p> <p>WEP: Select the wireless encryption level and key type. Available options are 128bit (13 ASCII characters or 26 Hexadecimal characters) and 64bit (5 ASCII characters or 10 Hexadecimal characters). You can also select 'Disable' to let everyone connect to the projector server wirelessly without the encryption.</p> <p>Key: Input the WEP key here. Required number or characters will vary depending on the encryption level and key type.</p>
GateKeeper	<p>This projector server has a built-in firewall to isolate wireless users and LAN. If you select 'All Pass', wireless users connected to this projector server will be able to access the wired Ethernet network connected to this projector server; if you select 'All Block', wireless users will not be able to access the wired Ethernet network, to keep privacy (this is also the default setting). If you want to let guests to access to the Internet, you can select 'Internet Only', to let guests visit web pages on internet through the wired Ethernet network connected to this projector server. (Refer Appendix on set up the projector server to the Internet).</p>

After setting up the above configurations, please click '**Apply**' and then '**Reboot System**' to allow all changes take effect.



## 5.7 Projection Setup

You can use this page to setup video resolution, color depth, and refresh rate.



Description of every setup items are listed below:

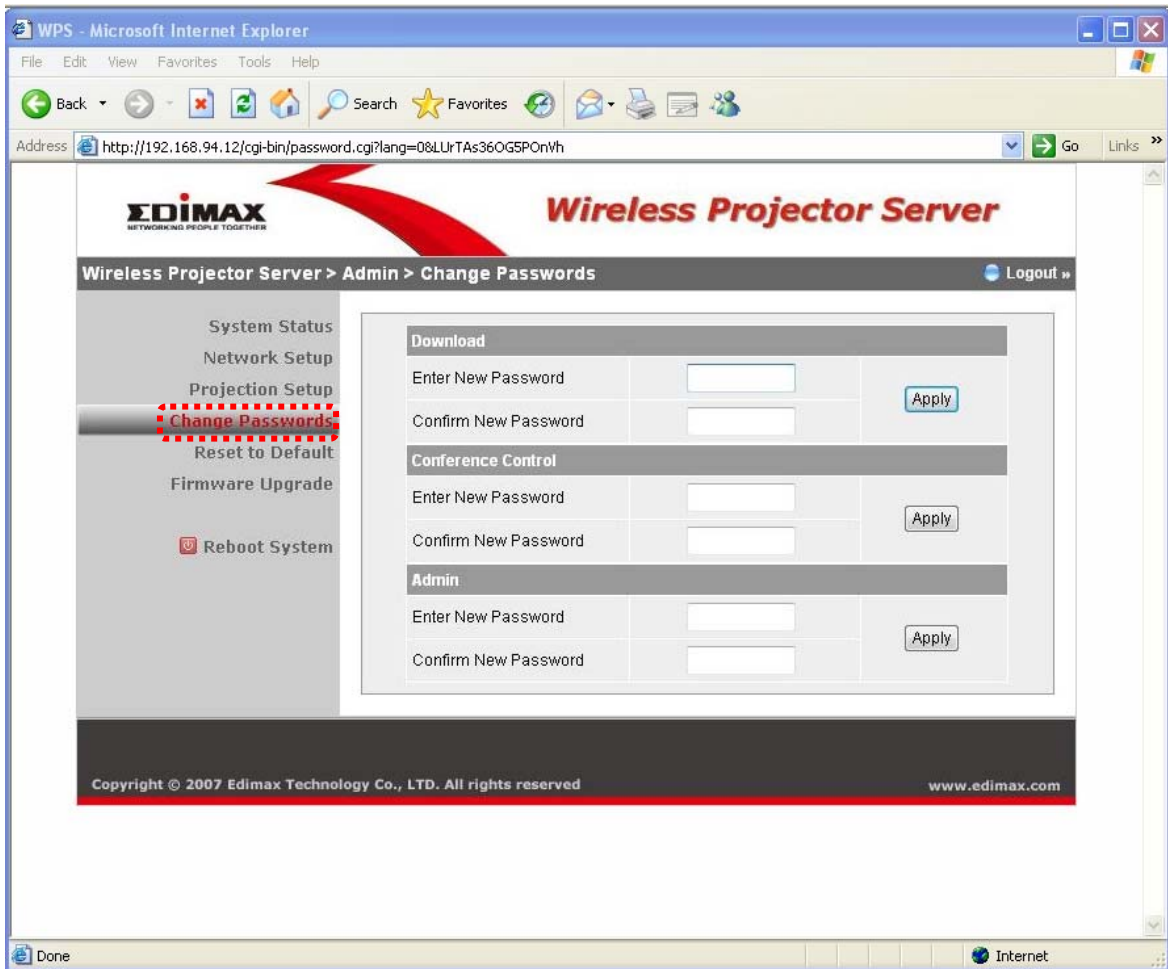
Resolution	Select video output resolution from dropdown menu, available options are XGA (1024x768), SVGA (800x600), and WXGA (1280x768). Please make sure the projector or CRT / LCD monitor connected to the projector server supports the video resolution you selected.
Color Depth	Select the color depth (the number of displaying colors) from dropdown menu, available options are normal (16-bit color) and high (32-bit color).
Screen Refresh Rate	Select the video refresh rate from dropdown menu, available options are 60Hz and 75Hz. For projectors and LCD monitors, please select '60Hz'; for CRT monitors, please select '75Hz' for better video performance.

After setting up the above configurations, please click '**Apply**' and then '**Reboot System**' to allow all changes take effect.



## 5.8 Change Passwords

You can use this page to change the passwords for Download, Conference Control, and Administration.



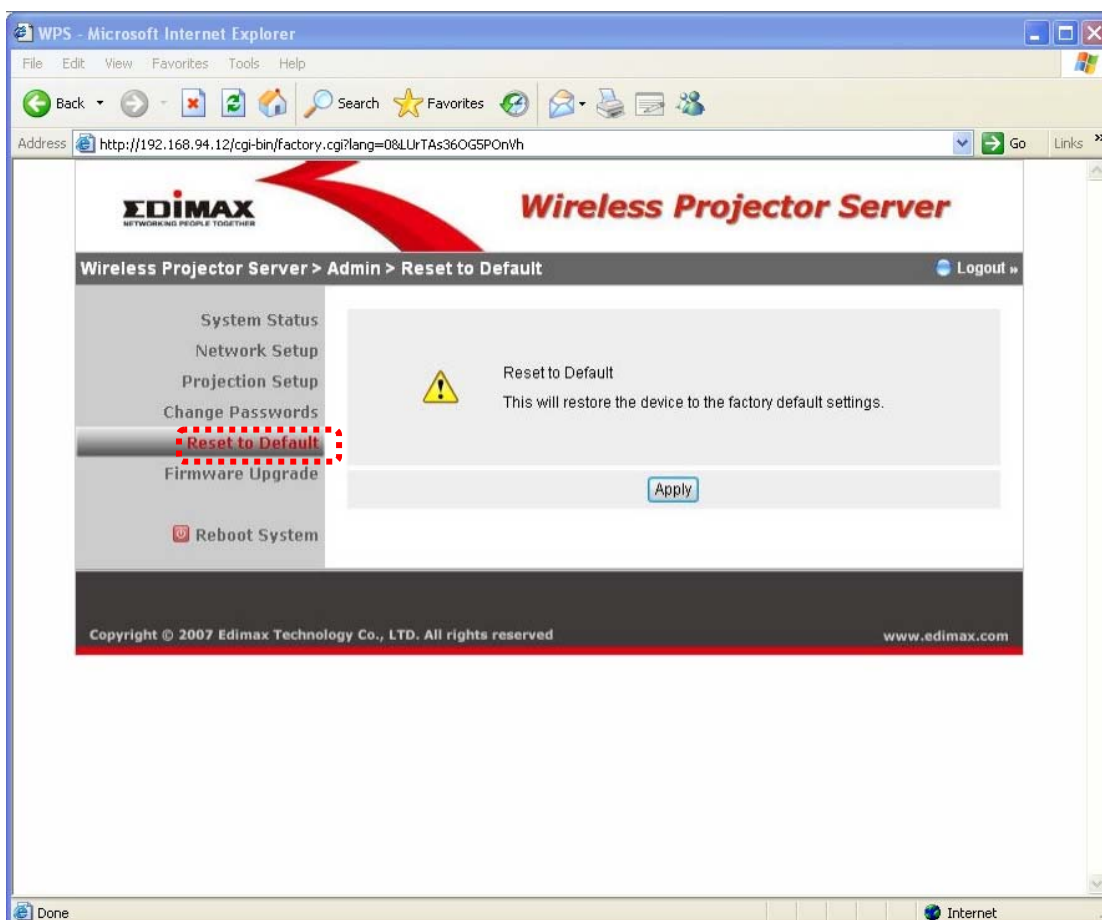
Description of every setup items are listed below:

Download	Change the password required for client software download. Please enter the same password for both 'Enter New Password' and 'Confirm New Password' fields.
Conference Control	Change the password required for conference control page. Please enter the same password for both 'Enter New Password' and 'Confirm New Password' fields.
Admin	Change the password required for administration page. Please enter the same password for both 'Enter New Password' and 'Confirm New Password' fields.

After setting up the above configurations, please click '**Apply**' and then '**Reboot System**' to allow all changes take effect.

## 5.9 Reset to Default

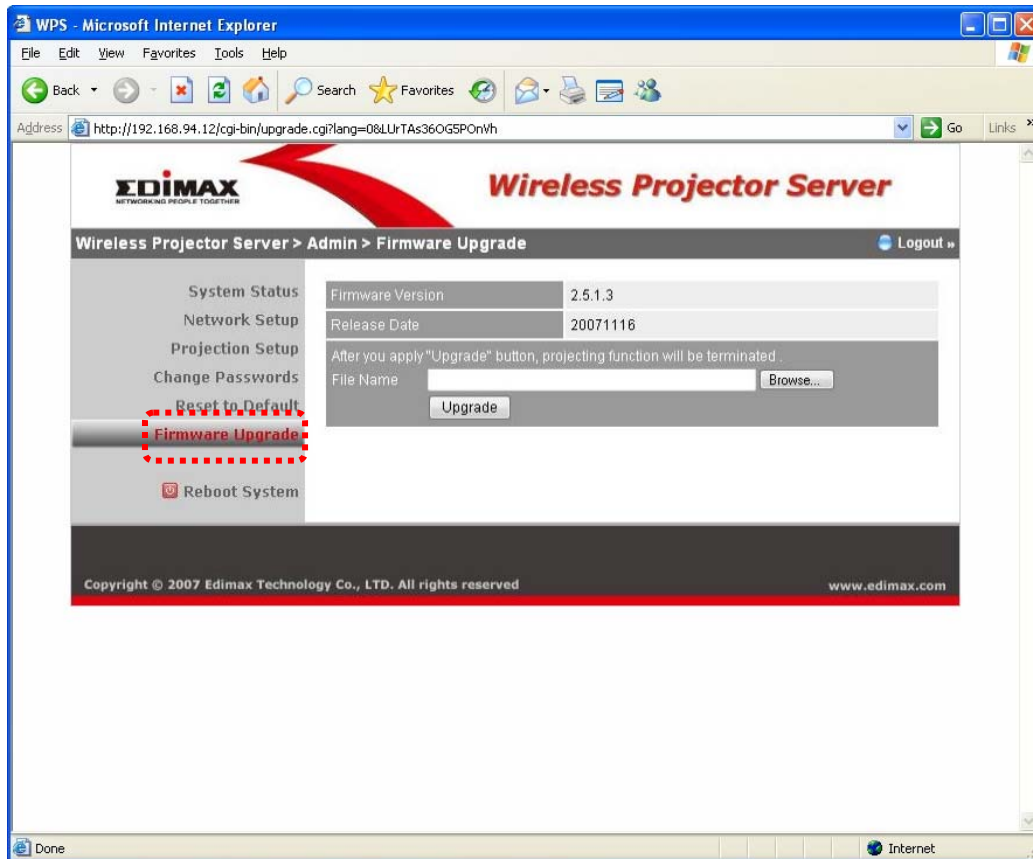
You can use this Reset to clear all current settings and restore the project server to factory default settings.



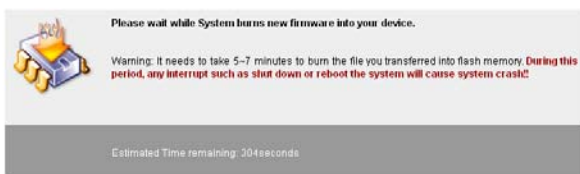
Click 'Apply' to clear all settings and you will not be able to recover any settings, so please think twice before you click 'Apply' button. Then, click on '**Reboot System**' to reboot the projector server so that the default settings can take effect.

## 5.10 Firmware Upgrade

If there is new version of firmware (the system software of this projector server) available, you can download it from Edimax's website, and store the firmware file to your hard disk. Then you can use this page to upload new firmware file to the projector server and replace previous version.



- 1) Click 'Browse' button and you'll be prompted to provide the location of the firmware file.
- 2) Then click 'Upgrade' button to start firmware upgrade. Please note that all settings will be restored to factory default setting after the firmware upgrade.

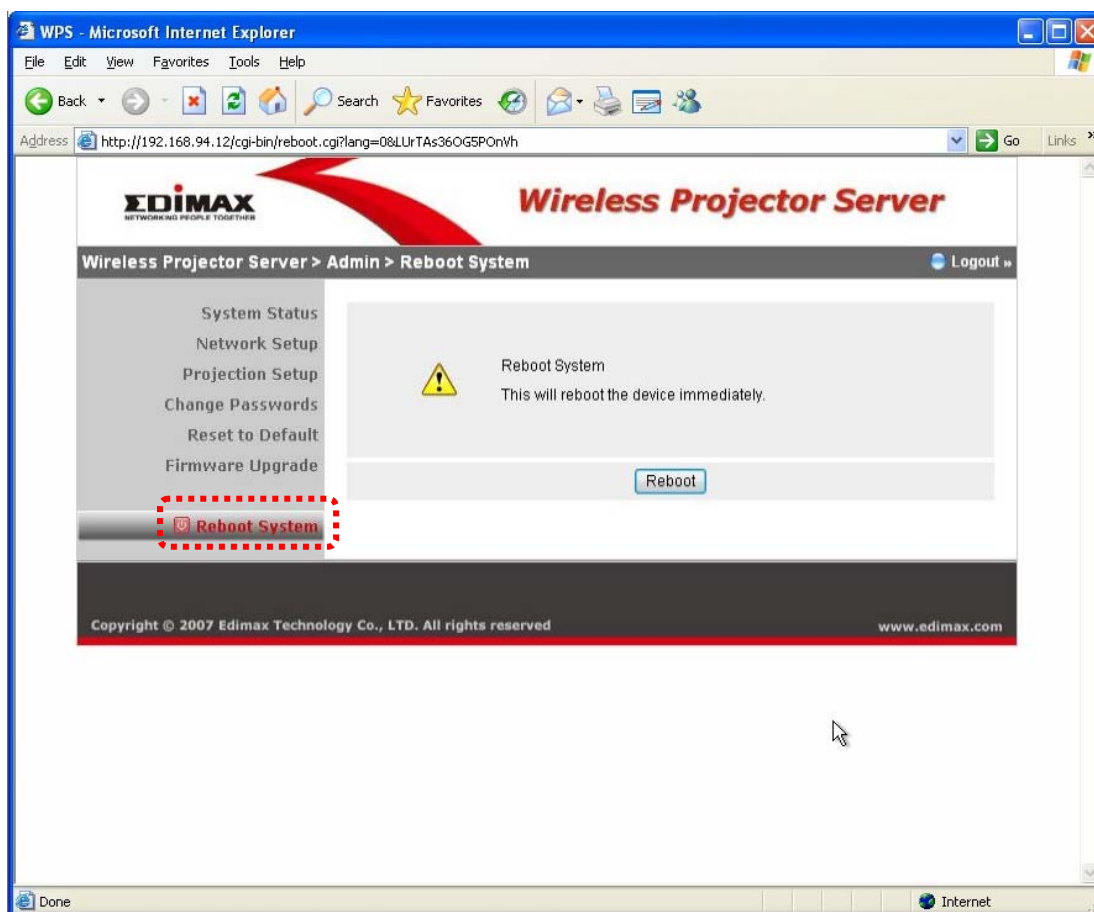


After click on 'Upgrade' button, the firmware upgrade process takes 5-7 minutes.

*Please note: It's recommended to use wired LAN/Ethernet connection to perform the firmware upgrade, and never disconnect the network cable, or switch computer / projector server off during the upgrade process.*

## 5.11 Reboot System

You can use this page to reboot the projector server by clicking the 'Reboot' button. If the projector server is not working properly, rebooting the projector server may help, and this function is very helpful when the projector server is located at the place where it is unable to reach easily.



## 6. APPENDIX

### 6.1 Troubleshooting

If you encounter any difficult when using this projector server, eg: the server is not responding or response with strange behaviors, please refer to this troubleshooting table before you contact us or the dealer of purchase, you may be able to solve the problem by yourself and save a lot of time.

Scenario	Possible Solution
'POWER' LED does not lit, and the projector server doesn't seem to be working	<ol style="list-style-type: none"><li>1. Check 'PWR' button located at the back of projector server, it should be pressed down; you may also check if the power cable of is securely inserted into '5V DC' jack.</li><li>2. If you tried above procedure and the 'POWER' LED is still not lit, make sure the wall socket which power adapter connected to is working, you may ask for a qualified electrical technician for help.</li><li>3. If the 'POWER' LED is not lit, but other LEDs (WLAN / LAN) are lit, please contact your dealer of purchase for assistance.</li><li>4. Contact your dealer of purchase for assistance if all solutions listed above do not work.</li></ol>
Cannot connect to projector server by client software or web browser	<ol style="list-style-type: none"><li>1. Make sure the IP address you used to connect the projector server is correct (refer to Chapter 2.1 for instructions on how to know projector server's IP address).</li><li>2. Please check network cable is correctly and securely connected to the LAN jack of projector server, and the 'LAN' LED at the front panel of projector server is lit.</li><li>3. If you set the projector server to obtain an IP address automatically, make sure the DHCP server on your local network is working.</li><li>4. If you tried to connect to the projector server via wireless connection, make sure you're connected to the correct access point SSID (default SSID of the projector server is 'WPS' and it will be changed if you modified the wireless setting of the projector server).</li><li>5. Switch the projector server off, and switch it on again after 5 seconds, then try to connect to the projector server again. You can</li></ol>

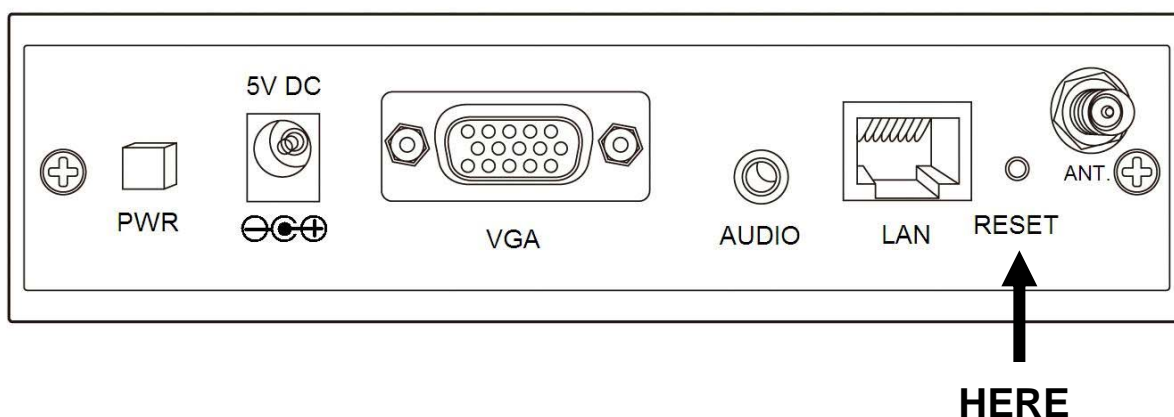
	<p>also use a pen or pin to press the 'RESET' button located at the back of projector server.</p> <p>6. Ask your network administrator or a qualified technician for help.</p>
The image displayed on projector or CRT / LCD monitor is distorted	<ol style="list-style-type: none"> <li>1. Make sure the video cable is securely connected to 'VGA' jack at the back of the projector server. You may also check the video connection to the projector or CRT/LCD monitor.</li> <li>2. Make sure the projector or CRT/LCD monitor works with the video output setting of projector server. You can change to a lower resolution and see if the display on projector or CRT/LCD monitor becomes normal (see Chapter 5.7 for detailed instructions for changing the output resolution).</li> <li>3. Replace the video cable used to connect the projector server and your projector or CRT/LCD monitor with a new one.</li> <li>4. Contact your projector or CRT/LCD monitor manufacturer for help.</li> </ol>
The wireless signal reception is bad	<ol style="list-style-type: none"> <li>1. If you're using this projector server in an extremely big room, you may wish to try another antenna with high signal gain for better signal reception. Contact your dealer of purchase for detailed information. <b>DO NOT ATTEMPT TO REAPLCE THE ANTENNA BY YOURSELF IF YOU'RE NOT SURE WHAT ANTENNA YOU SHOULD USE!</b></li> <li>2. Move your computer closer to the projector server if possible, or use wired connection.</li> <li>3. The wireless antenna on the projector server should be perpendicular to the ground for better reception.</li> </ol>
Cannot connect wirelessly to the projector server	<ol style="list-style-type: none"> <li>1. If you set the projector server to use wireless encryption, all wireless clients should input the correct WEP key before they can get connected.</li> <li>2. Make sure the SSID of the projector server is found by your computer, and you connect to the correct SSID for the projector server.</li> <li>3. Reboot your computer and try again.</li> </ol>
No audio	<ol style="list-style-type: none"> <li>1. Check the volume setting of your computer and your audio speaker / amplifier.</li> <li>2. Check the audio cable that connects the projector server and your audio speaker / amplifier.</li> <li>3. Replace the audio cable with a new one.</li> </ol>

## 6.2 Reset The Projector Server To Factory Default Setting

In some cases, you may lose the control of your projector server, eg: you forget the administration password, or you can't get access to the administration interface for some reasons. You can use reset button located at the back of the projector server, to clear all settings (include admin password).

Please follow the following instructions to perform the reset:

1. Press 'PWR' button to make sure the projector server is switched off.
2. Use a pen or pin to press 'RESET' button located at the back of projector server and hold still.



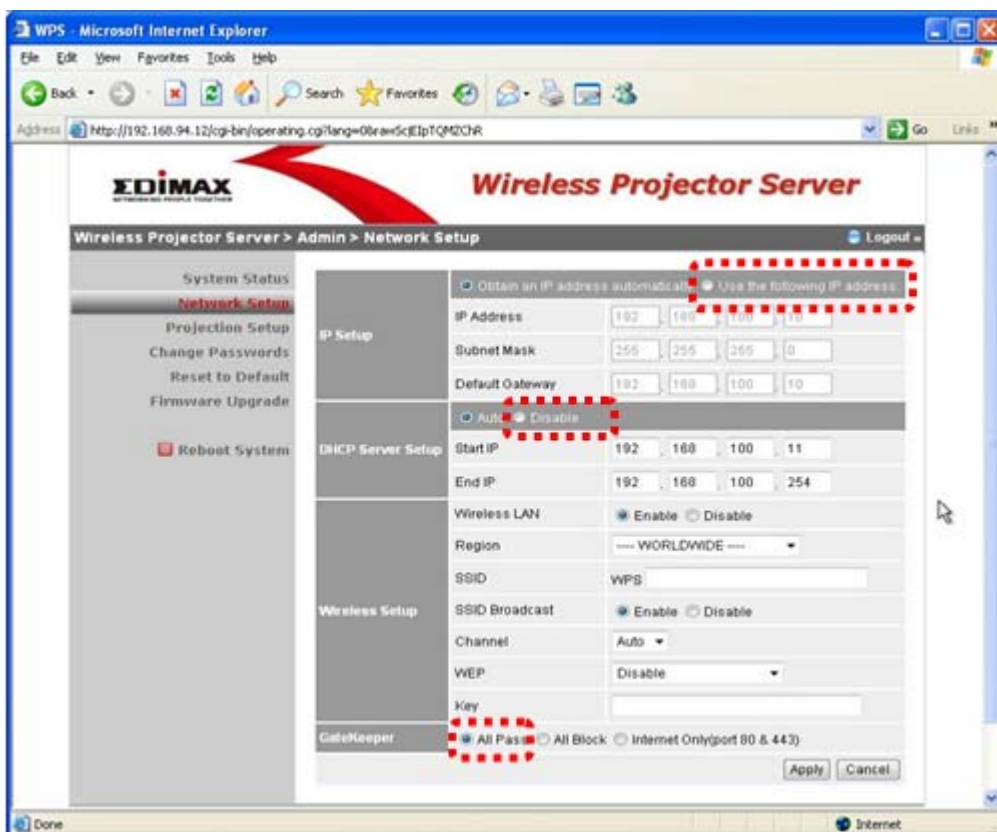
3. Press 'PWR' button to switch projector server on (you should still press and hold 'RESET' button now).
4. Release 'RESET' button after 10 seconds, and the projector server will be restored to factory default settings, you may use default password to access administration menu now.



## 6.3 Set Up The Wireless Projector Server (WPS) To The Internet

You can setup the WPS to connect to your router/existing network that has internet connection. By doing this, all computers connected to the WPS wirelessly will be able to access to the Internet via your router. This allows the presenters to enhance their presentations using the information on the Internet.

- 1) Configure the WPS from the Web Admin by clicking on Admin>Network Setup.
- 2) Select **Use the following IP Address**. Configure:
  - IP Address – Use an IP address that correspond to your router IP range.
  - Subnet Mask – Use the same Subnet Mask of your router.
  - Default Gateway – The IP Address of your router.
- 3) Select **Disable** on DHCP Server Setup.
- 4) Select **All Pass** on GateKeeper.



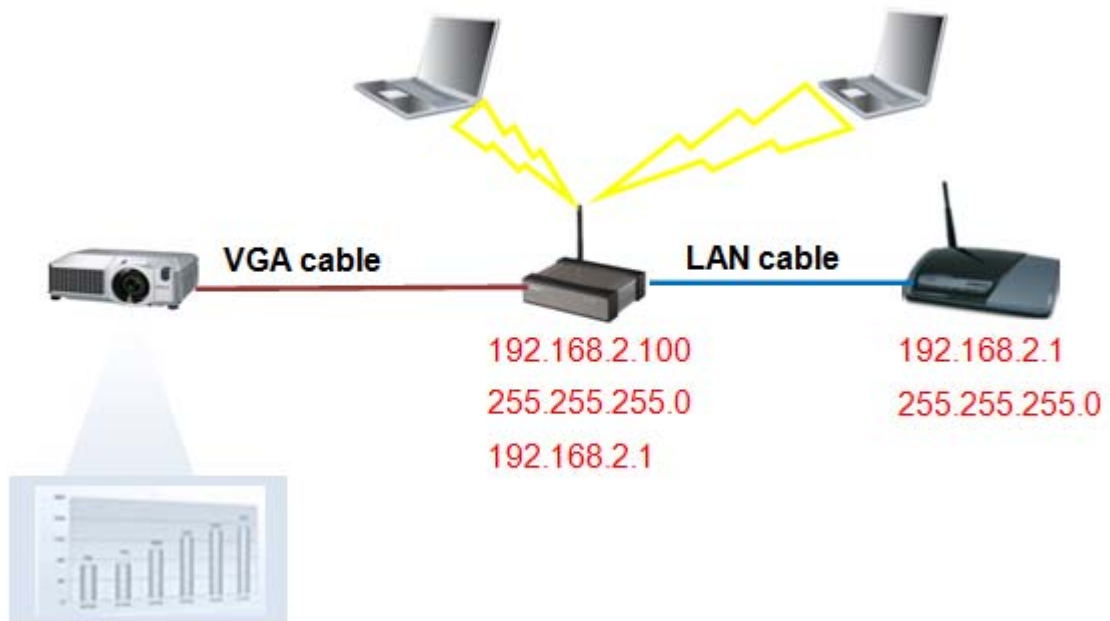
- 5) Click 'Apply' and then click 'Reboot System' to save your settings.



6) Connect a LAN cable to the WPS's LAN port and connect it to the LAN port of your router.

Application (Example):

- IP Address, Subnet Mask and Default Gateway of the WPS.
- IP Address and Subnet Mask of the router.



7) All computers that connected to the WPS wirelessly can access to the Internet freely. Presenters can now incorporate their presentations with live web data.

## Free Manuals Download Website

<http://myh66.com>

<http://usermanuals.us>

<http://www.somanuals.com>

<http://www.4manuals.cc>

<http://www.manual-lib.com>

<http://www.404manual.com>

<http://www.luxmanual.com>

<http://aubethermostatmanual.com>

Golf course search by state

<http://golfingnear.com>

Email search by domain

<http://emailbydomain.com>

Auto manuals search

<http://auto.somanuals.com>

TV manuals search

<http://tv.somanuals.com>