



RV-7

STEREO REVERB

OWNER'S MANUAL

 **HardWire**

EXTREME PERFORMANCE PEDALS

Download from www.Somanuals.com. All Manuals Search And Download.

DECLARATION OF CONFORMITY

Manufacturer's Name: DigiTech
Manufacturer's Address: 8760 S. Sandy Parkway
Sandy, Utah 84070, USA

declares that the product:

Product name: HardWire RV-7

Product option: All (requires Class II power adapter that conforms to the requirements of EN60065, EN60742, or equivalent.)

conforms to the following Product Specifications:

Safety: IEC 60065 (7th ed. 2001)

EMC: EN 55013 (2001+A1)
EN 55020 (1998)

Supplementary Information:

The product herewith complies with the requirements of the Low Voltage Directive 2006/95/EC and the EMC Directive 2004/108/EC.

Vice-President of Engineering
8760 S. Sandy Parkway
Sandy, Utah 84070, USA
Date: June 10, 2008

European Contact: Your local DigiTech Sales and Service Office or:

Harman Music Group
8760 South Sandy Parkway
Sandy, Utah
84070 USA
Ph: (801) 566-8800
Fax: (801) 568-7583

Warning

For your protection, please read the following:

Important Safety Instructions

1. Read these instructions.
2. Keep these instructions.
3. Heed all warnings.
4. Do not use this apparatus near water.
5. Clean only with dry cloth.
6. Do not block any ventilation openings. Install in accordance with the manufacturer's instructions.
7. Do not install near any heat sources such as radiators, heat registers, stoves, or other apparatus (including amplifiers) that produce heat.
8. Protect the power cord from being walked on or pinched particularly at plugs, convenience receptacles, and the point where they exit from the apparatus.
9. Unplug this apparatus during lightning storms or when unused for long periods of time.
10. No user serviceable parts inside. Refer all servicing to qualified service personnel. Servicing is required when the apparatus has been damaged in any way, such as power-supply cord or plug is damaged, liquid has been spilled or objects have fallen into the apparatus, the apparatus has been exposed to rain or moisture, does not operate normally, or has been dropped.
11. **WARNING:** To reduce the risk of fire or electric shock, do not expose this apparatus to rain or moisture.
12. Refer to labels on the unit, including bottom cover, or other markings and pertinent information.



If you want to dispose of this product, do not mix it with general household waste. There is a separate collection system for used electronic products in accordance with legislation that requires proper treatment, recovery and recycling.

Private household in the 25 member states of the EU, in Switzerland and Norway may return their used electronic product free of charge to designated collection facilities or to a retailer (if you purchase a similar new one).

For Countries not mentioned above, please contact your local authorities for a correct method of disposal.

By doing so you will ensure that your disposed product undergoes the necessary treatment, recovery and recycling and thus prevent potential negative effects on the environment and human health.

WARRANTY:

We at DigiTech are proud of our products and back-up each one with the following warranty:

The warranty registration card must be mailed within ten days after purchase date to validate this warranty.

DigiTech warrants this product, when used solely within the U.S., to be free from defects in materials and workmanship under normal use and service.

DigiTech liability under this warranty is limited to repairing or replacing defective materials that show evidence of defect, provided the product is returned to DigiTech WITH RETURN AUTHORIZATION, where all parts and labor will be covered up to a period of one year (this warranty is extended to a period of six years when the product has been properly registered by mail or through our website). A Return Authorization number may be obtained from DigiTech by telephone. The company shall not be liable for any consequential damage as a result of the product's use in any circuit or assembly.

Proof-of-purchase is considered to be the burden of the consumer.

DigiTech reserves the right to make changes in design, or make additions to, or improvements upon this product without incurring any obligation to install the same on products previously manufactured.

The consumer forfeits the benefits of this warranty if the product's main assembly is opened and tampered with by anyone other than a certified DigiTech technician or, if the product is used with voltages outside of the range suggested by the manufacturer.

The foregoing is in lieu of all other warranties, expressed or implied, and DigiTech neither assumes nor authorizes any person to assume any obligation or liability in connection with the sale of this product. In no event shall DigiTech or its dealers be liable for special or consequential damages or from any delay in the performance of this warranty due to causes beyond their control.

NOTE: The information contained in this manual is subject to change at any time without notification. Some information contained in this manual may also be inaccurate due to undocumented changes in the product or operating system since this version of the manual was completed. The information contained in this version of the owner's manual supersedes all previous versions.

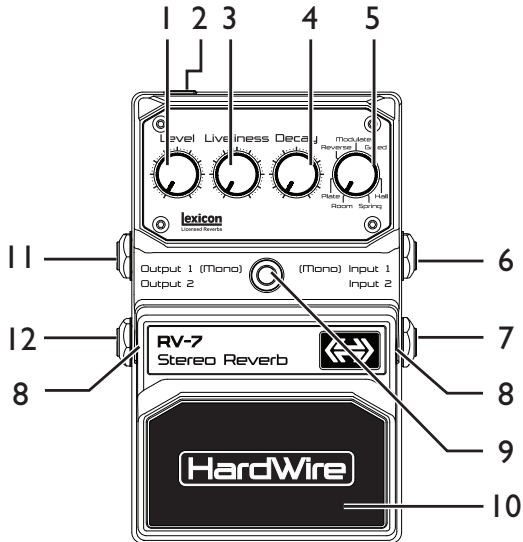
Download from [Www.Somanuals.com](http://www.Somanuals.com). All Manuals Search And Download.

Introduction

More than a remarkable achievement, HardWire™ represents a collection of significant improvements in effects pedals for guitar. HardWire pedals provide a suite of well-known effects, each with superior tone and control. But these pedals go above and beyond their peers, providing such distinguishing features as true bypass, high voltage operation and true stereo processing with genuine Lexicon® reverbs, making them essential additions to the signal chain of players who know about sound quality and demand the utmost in performance.

Included Items:

- HardWire RV-7 Stereo Reverb
- HardWire StompLock™
- Foot Switch Glow Sticker
- Hook-and-loop Pedalboard Pad
- Warranty card



What Does This Do?

1. **Level Knob** - Controls the reverb level. Turn this knob clockwise to increase and counter-clockwise to decrease the reverb level.
2. **DC Adapter Jack** - Connect (an optional) Harman PS200R power supply to this jack. Use the proper supply for your area's mains line voltage.
3. **Liveliness Knob** - Controls the amount of high frequency response in the Reverb's effect signal. Turn this knob clockwise to increase and counter-clockwise to decrease the high frequencies.
4. **Decay Knob** - Controls the length of time it takes for the Reverb to fade out. Turn this knob clockwise to increase and counter-clockwise to decrease the reverb decay time.
5. **Type Knob** - Selects one of 7 Lexicon® reverbs:
ROOM - fast decaying reverb; great for a touch of ambience.
PLATE - renowned studio reverb found on classic recordings.

REVERSE - reverb in reverse; quietly crescendos to full volume.

MODULATED - lush modulating reverb ideal for chords.

GATED - unique reverb with abrupt decay; good for percussive playing.

HALL - large encompassing reverb with warm decay.

SPRING - classic “surf” reverb; great for Rockabilly too!

6. **Input 1 (Mono)** - Connect your instrument, the output of a pedal, or an amp effects send to this jack. Signals are heard at both outputs when only the Input 1 (Mono) jack is used. This jack enables battery power to the pedal when connected. To prolong battery life, disconnect the cable from the Input 1 (Mono) jack when not in use. If the optional Harman PS200R power supply is used, cables can remain connected.
7. **Input 2** - Connect a second input to this jack for stereo operation. Inputs 1 and 2 are processed separately through the Stereo Reverb

effect then fed to Outputs 1 and 2 keeping true stereo separation between channels.

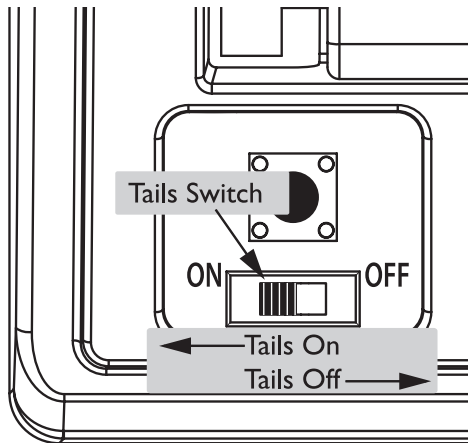
- 8. Foot Switch Release Pins** - These two pins are spring loaded hinges that hold the Foot Switch in place. See page 10 for information on accessing and changing the battery. See page 6 for more information about using and changing the Tails Switch settings.
- 9. Indicator LED** - Lights when the effect is turned on. When battery power is low (approximately 15 minutes), the Indicator LED begins to dim giving you advanced warning that very shortly you will need to replace the battery.
- 10. Foot Switch** - Turns the effect on and off.
- 11. Output 1 (Mono)** - Connect this output to the input of a single guitar amplifier or amp effects return.
- 12. Output 2** - Connect this output to the input of a second guitar amplifier when a second amp is being used.

Note: Use unbalanced mono instrument cables only.

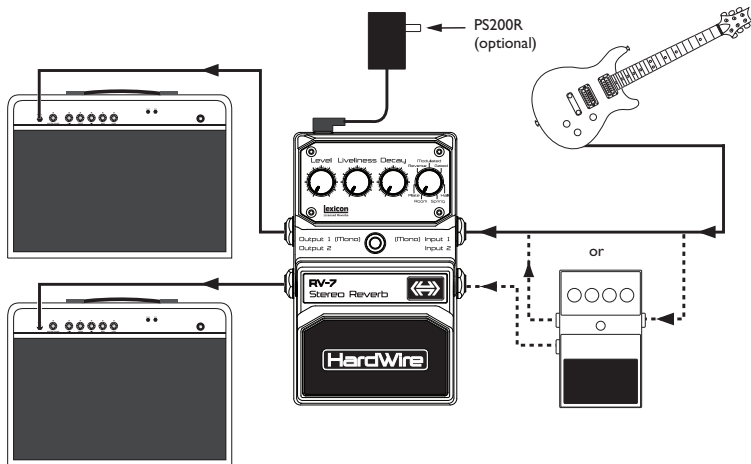
Tails Switch

The HardWire Stereo Reverb features a switch that allows the reverb signal to continue being heard after the effect is bypassed. When the Tails Switch is set ON, the HardWire Stereo Reverb does not utilize true hardware bypass. If you always want to use true hardware bypass, set the Tails Switch to OFF. When the Tails Switch is OFF, reverb signal is cut off immediately when the effect is bypassed.

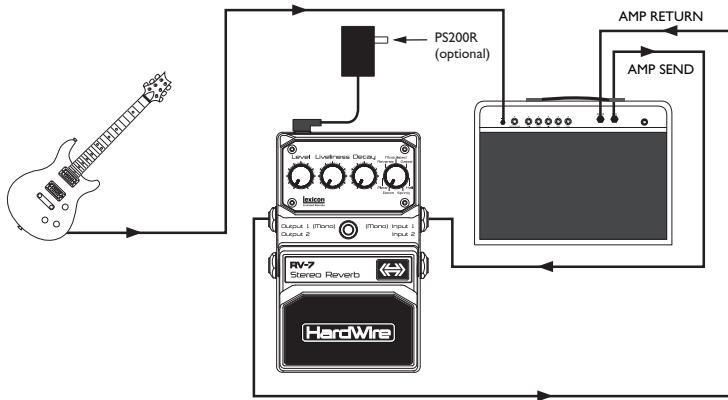
The Tails Switch is located under the Foot Switch and is accessed by pressing in one of the Foot Switch Release Pins using the tip of a 1/4" guitar cable plug. Once the Foot Switch is removed, the Tails Switch is visible inside the chassis next to the button switch that turns the effect on and off. Slide the switch to the left to turn Tails ON and to the right to turn Tails OFF.



Amplifier Setup



Effects Setup



Note: If the amp effects loop has a mix control, set the mix to 100% full wet.

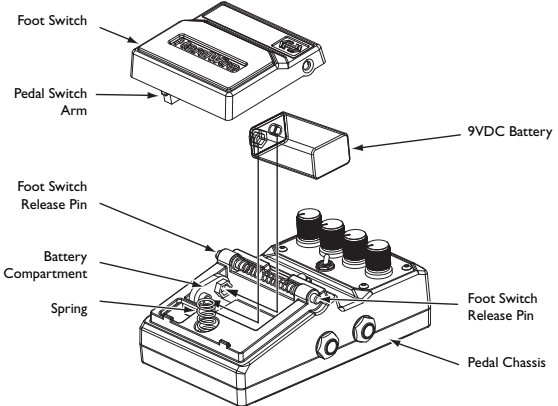
Download from [Www.Somanuals.com](http://www.Somanuals.com). All Manuals Search And Download.

Battery Operation

In the event that battery power is completely depleted, HardWire pedals automatically switch into bypass. This eliminates the need to remove the pedal from your pedal chain if the battery is dead. To replace the battery, do the following:

1. Using the tip of a 1/4" guitar cable, push one of the Release Pins in on either side of the Foot Switch, and remove it from the pedal chassis.
2. Remove the battery from the battery compartment and disconnect the battery cable.
3. Connect a new battery to the battery cable and put it back in the battery compartment. Make sure the battery cable does not interfere with the spring or pedal switch arm.
4. Place one hole of the Foot Switch over its corresponding pin.
5. Push the opposite pin in and lower the other side of the Foot Switch into place over the depressed pin. Release the pin. When the Foot

Switch is properly fastened, both release pins are flush with the outer side of the pedal.



HardWire Performance Accessories

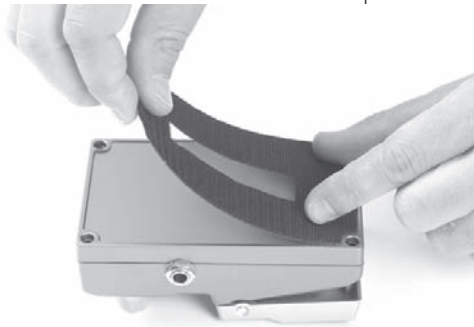
The performance accessories make integrating a HardWire pedal into any pedal board a snap. The following accessories are included:

- Hook-and-loop Pedalboard Pad (designed to attach to the surfaces found on most commercial pedalboards)
- Foot Switch Glow Sticker (easily visible on dark stages)
- StompLock™ (keeps your settings where you want them)

Hook-and-loop Pedalboard Pad

To attach the Pedalboard Pad, do the following:

1. Peel off the existing rubber skid pad from the bottom of the pedal.
2. Peel the adhesive protector from the back of the Pedalboard Pad.
3. Apply the Pedalboard Pad to the bottom of the pedal.



Foot Switch Glow Sticker

To attach the Foot Switch Glow Sticker, do the following:

1. Peel the adhesive backing from the Foot Switch Glow Sticker.
2. Apply the Glow Sticker to the top of the Foot Switch.



StompLock

To place the StompLock over the pedal knobs, do the following:

1. Set the knobs to your preferred setting.
2. Gently push the StompLock over the top of the knobs.
3. To remove the StompLock, gently lift one side and then the other.



Specifications

Controls - Level, Liveliness, Decay, Type, On/Off Pedal

Jacks - Input 1 (Mono), Input 2, Output 1 (Mono), Output 2

Input Impedance - $>1\text{ M}\Omega$ (stereo), $>500\text{ k}\Omega$ (mono) - effect on

Output Impedance - $1\text{ k}\Omega$ - effect on

Input Impedance - true hardware bypass - effect off

Output Impedance - true hardware bypass - effect off

Power Supply - 9V Alkaline Dry Battery or

Harman PS200R 9V DC power supply

Current Draw - 75 mA (typical at 9V DC)

Power Consumption - 675 mW (typical w/optional PS200R power supply)

Dimensions - 5.25"(L) \times 3.5"(W) \times 2.15"(H)

Weight - 1.3 lbs.

Optional Power Supply:

PS200R-100 (100V~ 50/60Hz)

PS200R-120 (120V~ 60Hz)

PS200R-230 (230V~ 50Hz)

16 PS200R-240 (240V~ 50Hz)

HardWire

EXTREME PERFORMANCE PEDALS

8760 South Sandy Parkway

Sandy, Utah 84070

PH (801) 566-8800

FAX (801) 566-7005

**HardWire and DigiTech are trademarks
of the Harman Music Group Inc.**

**Copyright - Harman Music Group
Manufactured in the USA**

**HardWire RV-7
Owners Manual 18-0488-A**

**Please visit us
on the World Wide Web at:
www.digitech.com**

Free Manuals Download Website

<http://myh66.com>

<http://usermanuals.us>

<http://www.somanuals.com>

<http://www.4manuals.cc>

<http://www.manual-lib.com>

<http://www.404manual.com>

<http://www.luxmanual.com>

<http://aubethermostatmanual.com>

Golf course search by state

<http://golfingnear.com>

Email search by domain

<http://emailbydomain.com>

Auto manuals search

<http://auto.somanuals.com>

TV manuals search

<http://tv.somanuals.com>