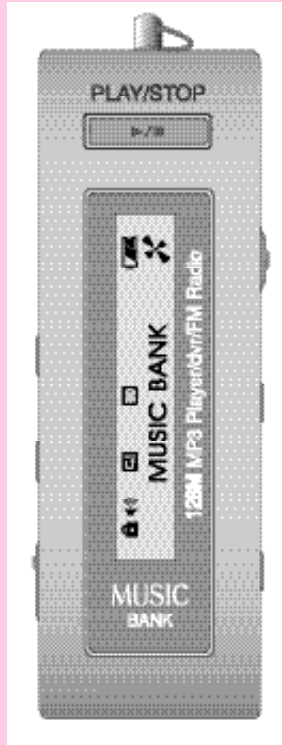


PORTABLE DIGITAL AUDIO PLAYER

MODEL : DMP-105/DMP-115

INSTRUCTION MANUAL



Thank you for purchasing PORTABLE DIGITAL AUDIO PLAYER from DIASONIC TECHNOLOGY Co. LTD. Please carefully read the Instruction manual for safe use of the product. We recommend you to keep this instruction manual for future reference.

INFORMATION TO THE USER

WARNING

Changes or modifications not expressly approved by the manufacturer could void the user's authority to operate the equipment.

This device complies with Part 15 of the FCC Rules. Operation is subject to the following two conditions: (1) this device may not cause harmful interference, and (2) this device must accept any interference received, including interference that may cause undesired operations.

COPYRIGHT

DIASONIC TECHNOLOGY Co. LTD. has all the copyrights for this instruction manual.

It is against the copyright law to make unauthorized copies, translate and publish material without prior authorization from DIASONIC TECHNOLOGY Co. LTD. All the information written in this instruction manual was produced with our company's careful caution, but they can be changed without any prior notification. Any differences between product and manual due to the cause of change the responsibility will not fall under our company.

CONTENTS

1. DMP-105/DMP-115 SERIES

1) Notes for using	.3
2) About DMP-105/DMP-115 SERIES	4
3) Function and Feature	5
4) Name of each part and LCD display	6
5) Use of battery and component of package.	7
6) Use of basic functions	9
7) Folder and File Management Method	12
8) Use of buttons	16
9) Operating dial menu	18
10) Recording from voice record property	21
11) Deleting	23
12) Connecting to a exterior devices	24
13) Receiving FM radio function	25

2. DIGITAL AUDIO MANAGER AND MAIL MANAGER

1) USB Driver Installation Method	.26
2) MANAGING FOLDER	.28
3) File Download	.30
4) File Deletion	.31
5) File Format	.32
6) What is DIGITAL AUDIO MANAGER?	.35
7) Mail Manager	.36

3. Standard Product	.40
---------------------	-----

Before use (notes for using)

Do not drop or give a hard impact. It could cause malfunction.

Do not use or place it at following places.

- Highly temperate area(above 60)
- Under direct light beam or anywhere close to heater
- Car with closed windows. (Especially summer)
- Where lots of moisture exist ex) bathroom.
- Where lots of electricity occurs

If too much force is pressed on LCD Display window it becomes the reason of malfunction. And it can cause problem due to LCD Display windows' specificity.

If you place any kind of magnetic card; cash card, or commutation ticket close to a speaker, it will affect magnetic part of cash card, and commutation tickets and make the card useless.

Please make sure no dust goes into insertion of this product.

You should not shake or give impact to the product or remove it from USB port when it is reading or writing data. At situation like this, data could be lost or damaged.

Please understand that our company will not be responsible for any harm caused by this product or compensation request made by third party

Please understand that our company will not be responsible for lose of memory other than by damage or repair.

Please do not repair, disassemble, or remodel on users own will.

Please do not operate where use of electric device is prohibited.

Please do not operate while driving.

Please do not overheat the body of the product or the battery, also do not short the battery.

Users using assistant equipment please do not use the main product fasten so closely to assistant equipment's slot.

There is a chance that stored memories might change, or disappear due to situation where the customer or the third party misuses the product or static electricity, and electric shock is given to product or when repairing the damage or replacing the batteries.

Please record important information on a memo or note.

About DMP-105/DMP-115 SERIES

DMP-105/DMP-115 series are Multi-Function Next-Generation Portable Digital Audio Player that integrated technology and quality from DIASONIC TECHNOLOGY Co. LTD. It's a high performance portable digital audio player which plays digitally compressed audio file MP3 and WMA file in various ways. It can record high-quality voice and also has function to record by connecting it to exterior devices and listening and recording of FM radio broadcast is also possible.

Voice and Exterior Device Record

It enables to record voice and record through exterior device; it has adopted a various voice record function of MP3 player, and it can also be used as portable data storing device which has portable hard disk function.

Listening and Recording of FM Radio

DMP-105/DMP-115 SERIES has function to receive FM Radio frequency, so you can listen to FM broadcast and at same time you can record the broadcast that you are listening and re-listen at anytime.

Graphic LCD Display and Back-Light Function

DMP-105/DMP-115 SERIES uses graphic LCD that supports not just a Korean, but also English, Chinese, and Japanese, so you can easily notify the name of the song and playtime, and the back-light of dark-blue LCD makes it possible for users to configure the menu at night time.

Provide DIGITAL AUDIO MANAGER/ Mail Manager

You can freely transmit the data recorded form PC or receive MP3 files from a PC, and the comfort support of playing and managing stored data and transmitting record data on e-mail is possible.

Function and Feature

DMP-105 is MP3 player that stores music file or data only with connection to the USB port of the computer and can be accessed relatively rapidly.

Adopted USB interface for convenient computer storage.

Plays MP3 file, voice record, receiving and recording of FM radio broadcast.

Graphic LCD with back-light (indicates file title, play time, battery condition, etc)

Hold function to prevent actions from miss-pressed buttons.

Repeat play function (normal, 1 track, all, random, section repeat, album repeat)

Supports Korean, English, Japanese, Chinese.

Play/ intro play/stop/ power off/record.

Next track/ previous track/ Fast forward/ Rewind.

Volume up/down(digital volume: 30level)

Storing/Managing Folder function.

Various equalizer mode (NORMAL, CLASSIC, LIVE, POP, ROCK.

Adjust back-light time, adjust scroll speed time.

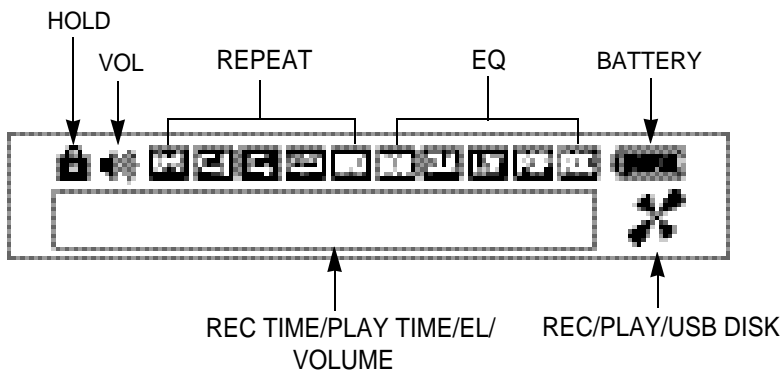
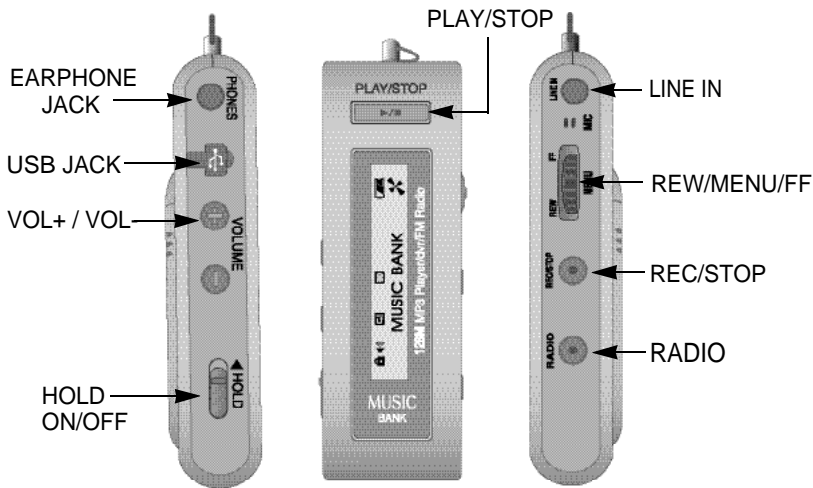
Delete function (ONE, ALL)

Display function to change display while MP3 file is being played (NORMAL, REMAIN, TITLE)

Software : DIGITAL AUDIO MANAGER [File transfer, MP3/WAV/Audio CD Play,MP3 Encoding (Option)]

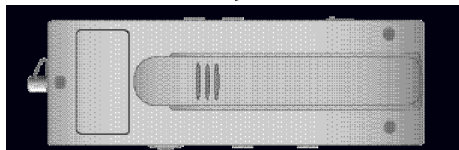
Mail Manager (DMF play, record, voice mail, voice memo)

Name of each part and LCD Display



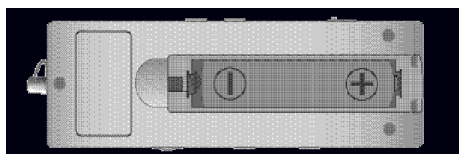
Use of Battery and Component of Package

1. Open the battery cover. → OPEN



2. Insert 1 LR 03 type battery to product matching the (+) (-) polar signs and close the cover.

[Battery : LR 03 or equal product (SIZE"AAA" or UM-4)



3. Press play/stop button to check the battery.



Battery full



Consumed 1/3 of the Battery .



Consumed 2/3 of battery.



Battery needs exchange.

Notice

If LCD doesn't appear after new battery has been inserted, immediately check the polar signs of battery. Even after checking the polar signs of the battery and if LCD still doesn't appear, take the battery out and request for repair.

4. Use time of battery

Battery used	When recording	When played with earphone (volume : medium)
Alkaline battery SIZE"AAA" LR-03	Approx. 7hour	Approx. 7hour

5. Attention when using battery

Take the battery out if it's not going to be used for long period of time.

When using rechargeable battery, use it properly after reading the instruction manual.

6. Package Components

STEREO EARPHONE, USB DRIVER INSTALL CD for WINDOWS 98 SE, LINE/IN CABLE, USB CABLE(10Cm), INSTRUCTION MANUAL, BATTERY, NECK STRAP, WIRED CONTROLLER

Basic use

Power ON/OFF



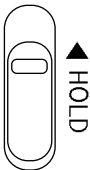
Press play button for over 1seconds to turn the power on and LCD display screen will appear like picture on the side. While power is on, press play button again for over 1second to turn the power off.

If none of the buttons are pressed over 1minute power will turn off automatically.

Using hold switch

If the hold switch is upward switch will not be operated.

Keep the switch upward when it's not being used or if you wish to maintain the recording condition. Before turning the power on, make sure hold switch is disabled.



HOLD disabled



HOLD
Switch will not be enabled.

If power is turned on while the hold switch is at ON it will indicate "HOLD ON", and power will shut off automatically. So, disable hold and turn the power on.

Conversing Mode

DMP-105/DMP-115 SERIES has MP3 mode, voice record mode, and FM radio mode. When the player is at stop, press menu button and menu will appear on LCD screen. Then, use FF or REW button to select between MP3 (audio) and voice record mode (record). To choose FM radio mode, press radio button when at stop and it will convert to FM radio mode.

PLAY, STOP

After selection of the desired directory using the FF button or the REW button in the ROOT, push the PLAY button for entry to that directory. For playing, it is all right to push the PLAY button, and pushing the PLAY button again during playing, it stops from the played part. At this time, pushing the PLAY button once again, it plays from the part after the played part. Pushing the REW button, it returns to the beginning of the played file.

If REC button is pressed while file was being played, it will stop and go back to the beginning of the file.

Deleting File (ERASE)

To delete current file being displayed on LCD screen press menu button while at stop then from menu use FF button or REW button to choose ERASE ONE then select 'yes' from ERASE menu and current file will be deleted.

To delete all the files in MP3 mode or Record mode choose ERASE ALL then select 'yes' from the ERASE menu using FF button or REW button then press menu button to delete all the files in selected mode.

Selecting and Moving file

Pushing the FF button or the REW button at the stop state, next directory and previous directory can be selected. Pushing the PLAY button after selection, it enters the selected directory, and the desired track can be selected using the FF button or the REW button. Pushing the FF button during playing, the next track is played, and pushing it continuously, the present track is played fast. When playing of one directory is completed, it goes to the next directory immediately. Pushing the REW button, the present track is played again from the beginning in the event that the present track has been played over 5 seconds, and the previous track is played in the event that the present track has been played within 5 seconds. Continuing to push it, it goes backward to the beginning of the present track fast.

Adjust Volume

Press VOLUME + and VOLUME - button to adjust volume. Hold on the button for continuous adjustment.

Volume can be adjust from level 0~30

Volume can only be adjusted with plugged in earphone. When earphone is unplugged it will auto-detect "earphone unplugged" and automatically adjust volume to level 20.

Section Repeat

DMP-105/DMP-115 has a 'selected section-repeated function'. Press and Hold on REC button while player is playing and it will set the starting point A of the section to be repeated. Then, repeat section signal (A #B) will start flashing on LCD. When the ending part of the repeat section is playing, press REC button to set the finish point B, and section-repeat signal will stop flashing with selected section repeating automatically. Press REC button again to disable section repeat.

INTRO PLAY

Intro play function plays beginning of 10second on all tracks to check the music and voice files that are in the memory. While the music is playing, press and hold PLAY button for over 1second, then "INTRO MODE" will appear on the LCD display. To listen to current track during intro play, just press PLAY button and disable intro mode.

Voice Record

After setting it to Record Mode, press REC button to begin recording. To finish recording press REC button, then it will create DMF file.

When recording at FM Radio Mode, it creates DMF file and saves it on to record mode. To listen to the file, converse the mode to Record Mode.

The folder of VOICE is created in the ROOT folder on the PC, and the recorded voice folder is stored.

Connecting it to PC

When connecting DMP-105/DMP-115 SERIES to PC using USB cable to download files, LCD display indicated USB CONNECTION and goes in to PC connection mode. If DMP-105/DMP-115 is connecting to PC it will not play any files. Music file within the SET can be played only on the PC. So, disconnect the PC connection cable to play files.

When connecting DMP-105/DMP-115 SERIES without battery to PC using USB cable, DMP-105/DMP-115 SERIES work, When disconnecting, DMP-105/DMP-115 SERIES power off automatically, Please power on DMP-105/DMP-115 SERIES before using.

Folder and File Management Method

Display at the Audio Mode

Upon power on at the initial purchasing state



- **ROOT** – It means the highest-level folder group of the audio mode at the device. When there is no folder or file, or upon formatting, there is no change even though the FF/REW (search key) is moved.
- **F01, F02....** – When a folder has been created at the audio mode, user creates a folder directly at the PC through connection with the creation USB.

< PC Connection Status >



Search of the setting status by the above-mentioned conditions (FF/REW) =

‡ ROOT ‡F01 ‡F02 ‡F03.....具

F01, F02....‡ Folder is created sequentially in the order of folder creation.

Within this folder, low-level folder can be created and file can be put at the PC.

<Exercise 2 Click} View of the inside file >

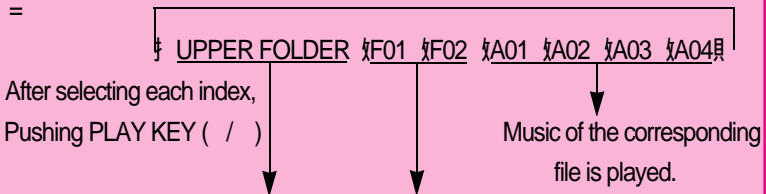


Low-level folders are formed like F01, F02... in the same as the root folder.

A01, A02.... – They are created when the audio files (MP3/WMA) have been downloaded at the audio mode.

Upon search (FF/REW) of the setting status at normal condition

=



After selecting each index,
Pushing PLAY KEY (/)

It moves to the upper folder. Folder or file of the selected folder is selected.

All movements from the low-level folder except the highest-level root, to the upper folder can be done at the upper folder.

UPPER FOLDER – It means the search window at the low-level folder except the root folder at the device.

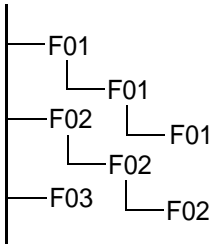
It is the state that is movable to the upper folder (to top) upon search of the low-level folder, and it moves to the upper folder when pushing the PLAY/STOP key.

Reference

The root and upper folders are not displayed as separate folder upon connection with the PC, and they mean the low-level windows upon the initial and folder search of the active window.

Movement method

ROOT ↔ UPPER FOLDER ↔



Movement method

After folder selection (F01, F02...) at the ROOT, pushing the PLAY key, it enters the upper folder.

UPPER FOLDER † ROOT Movement = After selection of the word 'UPPER FOLDER', push the PLAY key.

UPPER FOLDER ‡ UPPER FOLDER Movement = After selection of the word 'UPPER FOLDER', push the PLAY key.

After file selection, it plays when pushing the PLAY key.

Display at the record mode

Upon power on at the initial purchasing state



<PC Connection Status >



V01, V02... – In case of the recording at the record mode, files are created sequentially (DMF).

Recording files can be created up to maximum 99 files ‡ After 99 files, INDEX FULL is displayed.

Reference

At the record mode, folder cannot be created separately as at the audio mode, and the recorded files are stored only at the "Voice" folder.

<VOICE FOLDER Click# View of the inside record file >



Reference

In case of deleting the voice file - Index number on the set is arrayed sequentially automatically.

<In case of deleting the above V05 (VOICE005.DMF) >



While VOICE005.DMF is deleted on the V05 INDEX, it has been changed into "VOICE 006.DMF".

Use of Buttons

MP3 Mode (SHORT means pressing it for short time and, LONG means more than 1second)

Button	Key Movement	When Stopped	While Playing
PLAY/STOP	SHORT	Plays Current Track	Stops Current Track
	LONG	Power off	Intro scan
FF	SHORT	Switch to Next Track	Play the Next Track
	LONG	Auto Increase of Next Track	Current Track Fast Forward
REW	SHORT	Switch to Previous Track	After 5sec, moves to beginning of the Track Before 5sec. Plays Previous Track
	LONG	Auto decrease of previous Track	Current Track Rewind
MENU		Menu	Menu
VOLUME +		Volume Up	Volume Up
VOLUME -		Volume Down	Volume Down
REC	SHORT		Stops Current Track
	LONG		Configuring and canceling section repeat
RADIO	SHORT	Switch to FM Radio MODE	—

Record Mode

Button	Key Movement	When Stopped	While Playing	When Recording
PLAY/STOP	SHORT	Plays Current Track	Stops Current Track	—
	LONG	Power off	Intro scan	—
FF	SHORT	Switch to Next Track	Play the Next Track	INDEX increase only after 5seconds.
	LONG	Auto Increase of Next Track	Current Track Fast Forward	—
REW	SHORT	Switch to Previous Track	After 5sec, moves to beginning of the Track Before 5sec. Plays Previous Track	—
	LONG	Auto decrease of previous Track	Current Track Rewind	—
MENU		Menu	Menu	Change DISPLAY
VOLUME +		Volume Up	Volume Up	Volume Up
VOLUME -		Volume Down	Volume Down	Volume Down
REC	SHORT	Starts Recording	Stops Current Track	Stops Recording
	LONG	Starts Recording	Setting and Erasing Repeat Section	Stops Recording
RADIO	SHORT	Switch to FM Radio MODE	—	—

FM Radio Mode

Button	Key Movement	FRQUENCY MODE	PRESET MODE	CONFIGURE STATION
PLAY/STOP	SHORT	Configures STATION	-	Configures STATION
	LONG	Power Off	Power Off	Power Off
FF	SHORT	Increase FM frequency minutely	Switch to Next Preset	Switch to Next Preset
	LONG	FM frequency AUTO SEEK+	-	-
REW	SHORT	Decrease FM frequency minutely	Switch to Previous Preset	Switch to Previous Preset
	LONG	FM frequency AUTO SEEK+	-	-
MENU		Enable Preset Mode	Disable Preset Mode	Enable Preset Mode
VOLUME +		Volume Up	Volume Up	Volume Up
VOLUME -		Volume Down	Volume Down	Volume Down
REC	SHORT	Starts or stops recording of Current frequency	Starts or stops recording of Current frequency	Starts or stops recording of Current frequency
	LONG	-	-	-
RADIO	SHORT	Disable FM Radio MODE	Disable FM Radio MODE	Disable FM Radio MODE

When setting Station, if there is no key movement for 3seconds it will automatically be terminated.

Earphone works as antenna for FM Radio. A better reception will be received by lengthening the earphone.

Volume adjustment is available in plugging with earphone.

Menu Table

MP3 Mode

MODE REPEAT EQ SCROLL ERASE DISPLAY BACKLIT

Use Menu button to select and configure each menu, and after moving and selecting upper menu, use FF and REW button to move through lower Menu.

When the desired file is to be entered in the ROOT after power on, selection and entry can be made using the REW and FF button.

MODE	MODE	AUDIO	RECORD
------	------	-------	--------

AUDIO : Convert to MP3 or WMA FILE playable mode.

RECORD : Convert Line input and voice record mode.

Can't configure Menu when the players being played.

REPEAT	REPEAT	ONE FOLDER	ALL FOLDERS
--------	--------	------------	-------------

ONE FOLDER : Only the file within the currently set up folder is repeated.

ALL FOLDERS : REPEAT is set up against the files within all folders created in the SET other than the currently set up folder.

EQ	EQ	NORMAL	CLASSIC	LIVE	POP	ROCK
----	----	--------	---------	------	-----	------

Choose the equalizer user wants to use (NORMAL, CLASSIC, LIVE, POP, ROCK)

SCROLL **SCROLL** 0.3SEC 0.5SEC 0.7SEC 0.9SEC 1.0SEC

Control the speed of music information scrolling on display window between 0.3second through 1.0second.

ERASE **ERASE** ONE FILE ONE FOLDER ALL

ONE FILE : Only one tune in the LCD display window is deleted before entry to the MENU.

ONE FOLDER : All files in the selected folder of the MP3 mode are deleted.

ALL : All files in MP3 mode are deleted.

DISPLAY **DISPLAY** NORMAL REMAIN TITLE

NORMAL : Allow music information to scroll through LCD display once and count elapsed time from beginning.

REMAIN : Allow music information to scroll through LCD display once and count elapsed time backward.

TITLE : Allow music information to continuously scroll on LCD

BACKLIT **BACKLIT** 0SEC 1SEC 2SEC 3SEC 4SEC 5SEC

Turn off or set the time of background light (LCD light) between 0 to 5seconds.

VOICE Mode

MODE REPEAT ERASE DISPLAY BACKLIT

MODE **MODE** AUDIO RECORD

AUDIO : Convert to MP3 or WMA FILE playable mode.

RECORD : Convert Line input and Record mode.

Can't configure Menu when the player is being played.

REPEAT REPEAT NORMAL ONE ALL

NORMAL: Stop all record files after playing it in order.

ONE: Repeat selected record file continuously.

ALL: Continuously repeats all record files in order.

ERASE ERASE FILE ALL

FILE: Delete record file displayed on LCD window before the erase menu.

ALL: Delete all record files in voice mode.

Can't erase when the music is being played.

DISPLAY DISPLAY NORMAL REMAIN

NORMAL: Counts elapsed time of record file displayed on LCD.

REMAIN: Reverse counts the elapsed time of record file displayed on LCD.

BACKLIT BACKLIT 0SEC 1SEC 2SEC 3SEC 4SEC 5SEC

Turn off or set the time of background light (LCD light) between 0 to 5seconds.

When menu button is pressed display screen displays last configured menu. At this moment, use FF or REW button to select the desired menu, then press menu key to configure the details involved in that menu.

Recording from Voice Record Property

Recording

Please select RECORD MODE to record on menu mode and can't record on MP3 mode.

Face the microphone sound source and press REC/STOP button.

It will start recording with, record number, record time, and progress displayed on display screen.

If you wish to stop recording, press the REC/STOP button one more time.

It is impossible to stop recording within 5seconds from start of recording.

Please beware that it won't stop recording even though REC/STOP button is pressed.

Don't need to look for empty space to record like cassette tape because when REC/STOP button is pressed it will start recording from the final number.

When recording for long period of time replace the battery to new one.

Please check the battery capacity before start recording.

Notice

Perform a test before the actual record to prevent failing.

When battery completely runs out during a record it will show low battery (LOW POWER) on display and power will shut off automatically.

Checking leftover record time

You can configure between elapsed time and leftover time from display configuration at menu.

When files are being played, it's marked with elapsed time or leftover time of current message and when recording, it's displayed in elapsed time of current message, or leftover record time of flash memory.

Record monitoring function

Connect earphones while recording to listen to what is being recorded.

Separating files while recording

Separating file is possible through need of user while recording. Use FF KEY to continue recording at next index and it has made it easy to determine the recorded information.

Notice

- Do not take the battery out while recording. Recorded information can be erased or it won't function properly. Always take the battery out from stop position.
- If memory doesn't have enough space it won't start recording. "MEMORY FULL" will be indicated when recording time is at full. Check leftover recording time before recording and erase all needless files.
- Recording at MP3 mode property is impossible so when recording convert to record mode property then start recording.
- Recording up to 99 messages

Deleting

Deleting is possible only from a stop position. (Deleting is same between MP3 and Voice property)

Deleting each message

Use FF or REW button to select message to be deleted.

Press menu and use FF or REW button to select ERASE then choose 'one' After that, select 'yes' then message will be deleted with 'erasing' displayed on the screen.

. LCD message number will be pulled forward when messages get deleted.

Notice: Deleted messages can't be recovered.

Delete all messages

Use the menu button to select property(MP3 or RECORD) to be deleted.

Select the property to delete then press menu and use FF or REW button to choose ERASE and select 'all'.

After that, select 'yes' and all the messages in selected property will be deleted with 'Erasing...' displayed on the screen.

Now, LCD will display 'NO FILES'.

- Deleting H/D is possible through USB
- If all the memories from hard-disk function are used up, storing of recorded or MP3 files are impossible. So, please use it after arranging the files.

Connecting it to Exterior Device

Connecting it to Exterior Device

It's possible to record recorded voices from this product to exterior device, such as cassette or MD using audio cable.

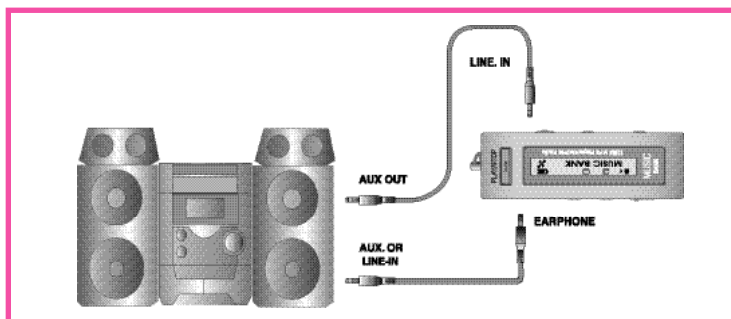
Connect to Audio

When recording exterior device to DMP-105/DMP-115 SERIES.

Connect additional audio cables to exterior microphone terminal and earphone terminal from exterior device or the output terminal of DMP-105/DMP-115 SERIES.

When recording DMP-105/DMP-115 SERIES

Connect additional audio cable to earphone terminal and microphone terminal from exterior device of input of DMP-105/DMP-115 SERIES.



Connecting method with an audio

Notice

When connecting it to exterior device turn the power off.

When connecting it to exterior device please carefully read and understand the manual before the connection.

Record from Exterior Device

When recording from exterior device lower the volume of the exterior device and connect audio cable to the product.

Adjust the volume of the product to mid-position and do not change it during the record procedure.

FM Radio Receiving Function

Reference : Works only on FM radio applied model.

It's convenient to listen to broadcast with auto seek function.

If FF key or REW key is pressed over 0.5sec after setting to radio, it stops at a receiving frequency. Auto seek function will not give you precise broadcast frequency. At this situation, use REW or FF key for precise control.

Configuring radio channel

Select radio mode by pressing radio button.

Frequency will appear on LCD. Select desired frequency using FF/REW KEY.

Storing Channel

Select radio mode by pressing radio button.

Frequency will appear on LCD. Select desired frequency using FF/REW KEY.

When you press PLAY/STOP button 01 will blink where FM is indicated. Now use FF/REW KEY to select channel (01-10) you wish to store and press play button again to store it to selected channel then FM will be indicated again when it get stored. You can store it up to CH10 using same method.

Confirming stored channel

When menu button is pressed 'Preset Mode' will be displayed then it will show stored channel and frequency.

Now use FF/REW KEY to select stored channel. When menu button is pressed from channel confirming mode, it will go back to FM frequency mode with 'Frequency Mode' displayed.

Recording radio broadcast

Select desired recording radio channel through same step from radio channel configuring step1~2.

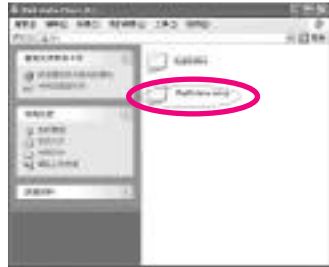
Press record button to start recording. Now recorded messages will be stored in index of voice next to last stored message. Message can't be increased during recording procedure. So, you have stop and start recording again.

Checking recording data during record is impossible and it can be checked from voice property after it's stopped.

USB Driver Installation Method

Need not install this Driver more than Window ME.

- (1) After installation of the provided program is completed, install the SETUP file as follows. (* Upon use of the WINDOWS 98)



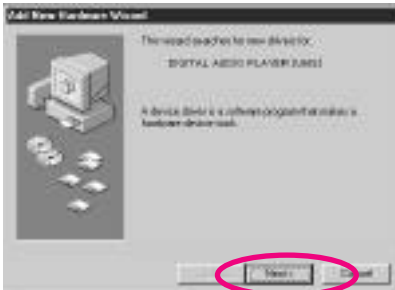
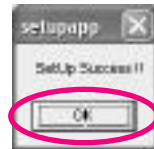
- (2) click "setupapp".



- (3) When the following figure appears, click [Yes].

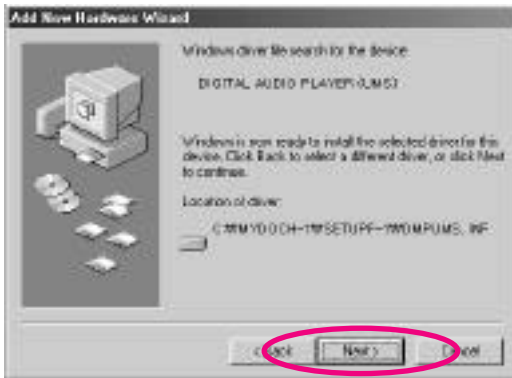


- (4) When the dialogue box to inform that the SETUP has been made comes out, click [Confirm].

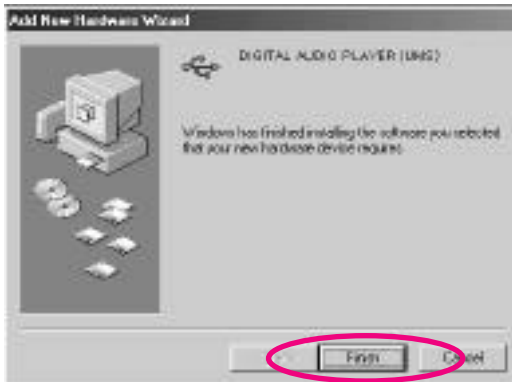


- (5) After the SETUP file is installed and USB is connected, click [Next] when the following figure appears.

(6) For installation of the driver, click [Next].



(7) When the following figure appears, click [Finish].



Reference

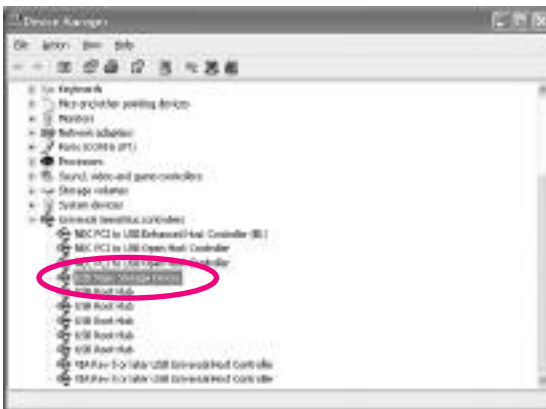
For installation of the USB driver, it is installed normally only when the program has been installed in the PC at first without fail and then the USB driver is installed.

MANAGING FOLDER

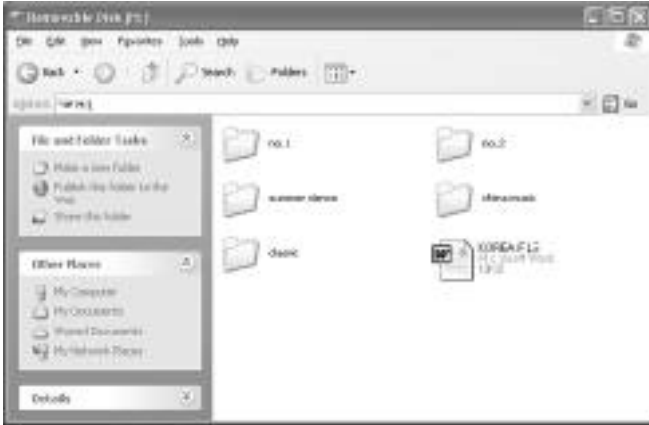
- (1) Clicking [My Computer] in the computer being used, it is recognized as portable disk (F:) within [My Computer Screen Window]. (* Upon use of the WINDOWS XP)



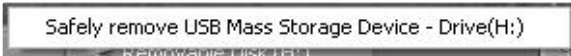
- (2) After the installation of USB driver by OS has been completed, the installation status can be confirmed in the Device Manager of My Computer as follows;



- (3) Data as well as MP3 music file are stored as shown in the following figure, and then it is possible to read, write and delete in the same method as for the hard disk being equipped in the computer.



- (4) DMP-105/115 removal method in the USB port (* Upon use of the WINDOWS XP)
1. Close the File being used.
 2. Clicking the icon displayed in the lower end of the right side in the screen, the following toolbar is created.



3. Clicking the toolbar, DMP-105/115 is removed as follows.



File Download

- (1) After the desired music files or data have been copied in the PC, it is downloaded through copying into the file management window of DMP-105/115. (At this time, the word of WRITING appears in the LCD screen.)



- (2) Folder is created as follows.

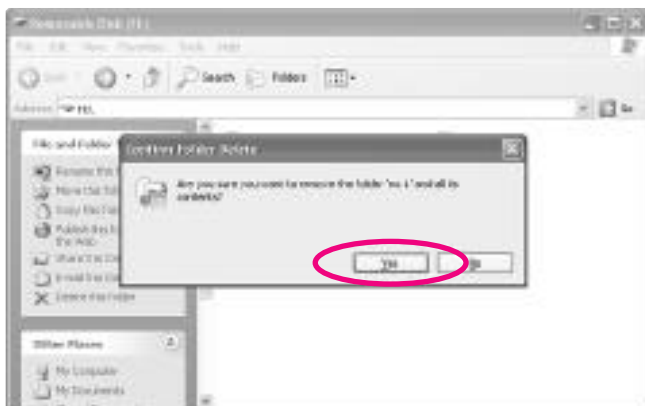


File Deletion

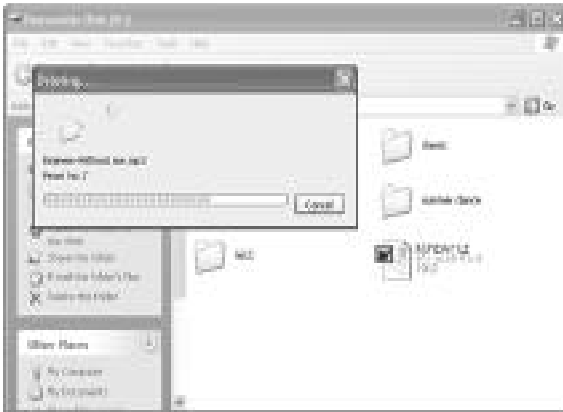
- (1) Pushing the right side key of the mouse after selection of file to be deleted, the following toolbar appears.



- (2) Select 'Yes'.

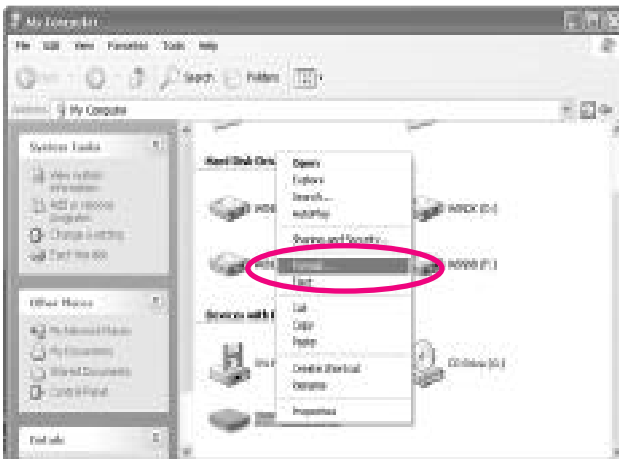


(3) After the following screen appears, it is deleted.

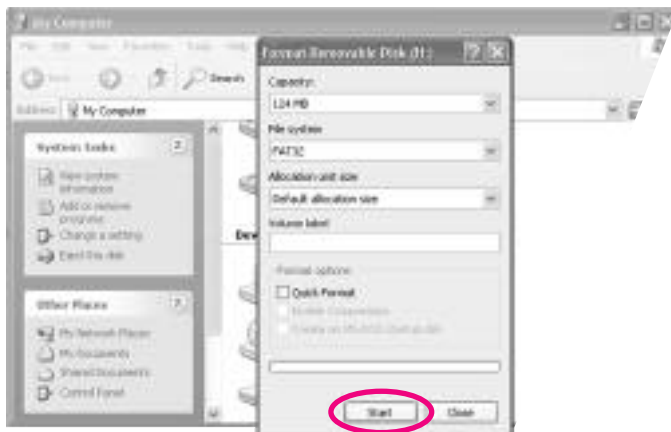


File Format

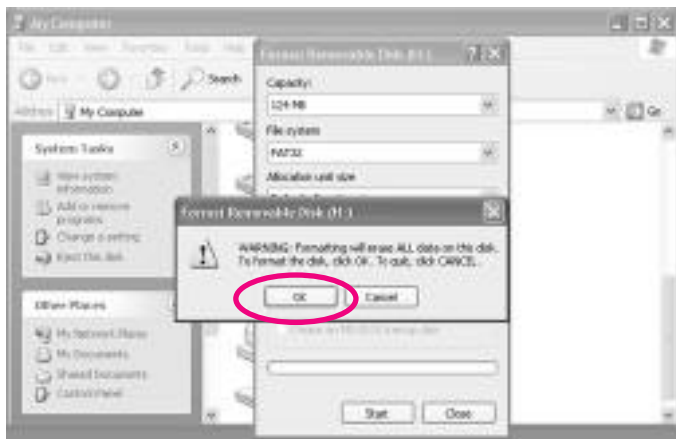
(1) Clicking [My Computer] in the computer being used, and then pushing the right side key of the mouse through selection of the portable disk (F:) within the [My Computer] screen window, the following screen appears. At this time, click [FORMAT].



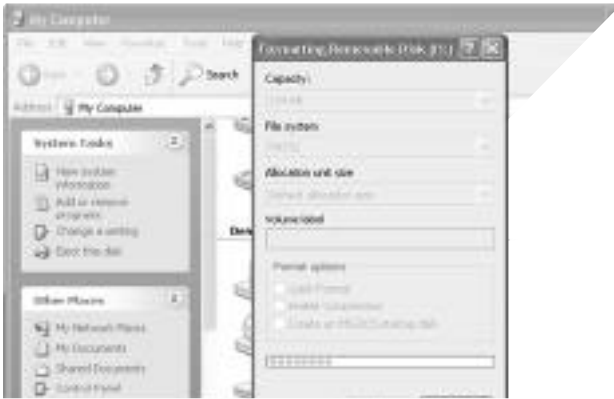
(2) When the following screen appears, click 'Start'.



(3) Click 'Confirm'.



(4) It is being formatted.



(5) Formatting has been completed.



<Reference>

After formatting and then execution of disk inspection, FILE001.CHK file can be created upon confirmation of the registered information.

In case of resetting after connection of the PC with main body, F01:FOUND.000,BOOTEX.LOG file can be created.

Even though these files are formed, they are not bad files. They can be used after deletion.

What is DIGITAL AUDIO MANAGER?

DIGITAL AUDIO MANAGER is a program which plays recorded voice files(DMF), plays MP3 Files and has following features.

Similar structure to Window Explorer for file managing

Plays MP3, MP2, WAV, Audio CD, playlist

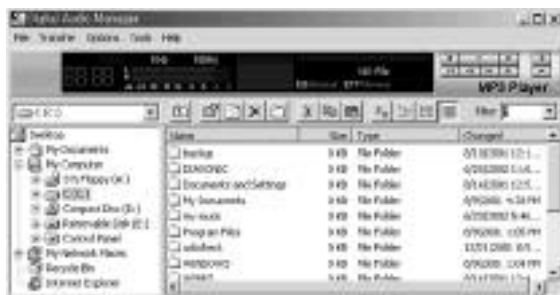
DMF/WAV two way convert

Convenient transfer of files using transfer list

Various spectrum, equalizer, effect support

Convenient instruction manual

Appearance of DIGITAL AUDIO MANAGER



Minimum System Requirement for DIGITAL AUDIO MANAGER.

Pentium 200MHz

64MB Memory

20MB Empty Hard Disk Space

256bit Color

Window 98/ME/2000/XP(NT Not Supported)

USB Port

CD-ROM Drive

Sound Card, Speaker or Headphone

Mail Manager

Play/Record DMF file

Voice mail function : auto appending at mail program

Creates self play function : voice file+player

Edit DMF file : delete front and rear, middle insert record function

16various voice effect



Mail Manager is a program that plays self created voice file DMF from DMP-105/DMP-115 SERIES. It can send voice mail or record and keep conference meeting and lectures.

Mail Manager send and receive voice mail through e-mail or network without typing or writing letters. To send voice mail by mail manager use DMF file recorded from DMP-105/DMP-115 SERIES, or simply press record and send recorded voice without any difficulties, and If recorded DMF file from mail manager is sent to DMP-105/DMP-115 SERIES, it can be played through DMP-105/DMP-115 SERIES.

Mail Manager supports mail program like exchange, internet mail, outlook, outlook express, and Netscape, with use of drag and drop sending voice mail through other mail program and network program is possible. One of the special function about mail manager is that it creates tiny size combined voice data and player in executable file (.exe), voice mail can be sent even receiver don't have mail manager. Also, changing original voice through use of various voice effects like reverb, echo, robot voice, helium voice makes interesting voice mail.

(1) Voice Recorder

Has Voice mail, Voice memo function, and uses high-quality sound compressed function to make or play recorded DMF files.

Play

Pause/Stop

Record (Half way insertion record possible)

Move forward

Move Backward

(2) Convenient use method

Auto-append of voice mail to mail program.

Press ' record 'button

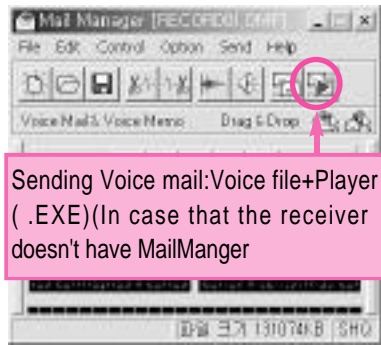
Say the message

Press ' Stop ' button

Finally press ' send ' button and

mail window with voice mail

attached will appear.



To do a proper recording or playing volume must be adjusted at appropriate level. Adjust [volume control]from window to control wave volume, and select [recording] at [property] from [option] the select [microphone] from volume control window to adjust volume at right level.

(3) Production of self play function

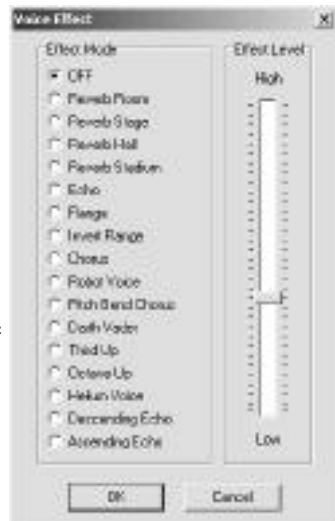
Creates little size of executable file combined with voice file and player.

If self player formed mail is sent receiver can listen to it even without mail manager.

From 'save as' save in 'voice mail+player' from and it will create self player with executable file(.exe)

(4) 16Digital voice effect

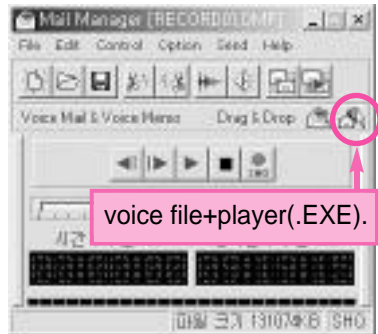
Change recorded voice to various voices.



16Digital voice effect

(5) Drag and Drop

If use drag and drop function of mail manager attaching voice mail to other mail program or network emulator not supported by mail manager will be possible. Press left button of mouse on drag and drop to add voice mail to other program. Now, Use two drags and drop icon, choose between voice file+player.

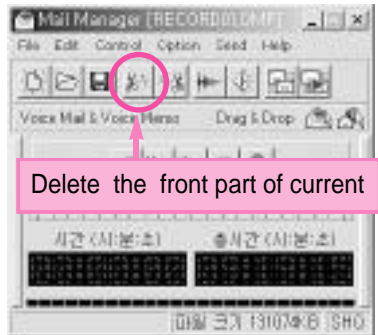


(6) Simple edit function

By simple edit function deleting of front and rear part of recorded messages are possible, and after recording if mis-record is found, delete the mis-part and just record that part again.

delete front part of current position

delete rear part of current position



(7) Supported mail program

Exchange

Internet mail

Outlook

Outlook express

Netscape(manual attach of voice mail)



(8) Shorten Keys

Support of shorten keys, control of mail manager is possible while using other program.

F2 : Play

F3 : Rewind

F4 : Fast Forward

F5 : Stop

GENERAL SPECIFICATIONS(DMP-105/DMP-115)

Model	DMP-105/DMP-115	
File type	MPEG 1/2 LAYER 3, WMA(Over 64kbit)	
Bitrate	32Kbps~320Kbps(MPEG 1/2 LAYER 3)	
Signal vs noise rate	85db (1KHz input 0db at USE LPF 30KHz)	
Distortion	0.3% ± 0.05 (1KHz input 0db)	
Frequency respond	20Hz~20Khz	
earphone	Max. 5mW(16ohm)	
Play mode	EQ : NORMAL, ROCK, POP, CLASSIC, LIVE	
Search play	Play each track 10 seconds	
Search	Easy track search	
Repeat	One song , all song ,section random	
Download speed	Max. 3Mbps(375Kbyte)	
EL/ BACK LIGHT	Blue	
Memory	Nand flash memory(128M/256M)	
AUDIO IN JACK	MONO DIRECT RECORD	
Key control	REC/FF/PLAY/REW/MENU/VOL+, VOL-/HOLD/RADIO	
Remote control	FUNCTION/PLAY/FF/REW/REC	
PC interface	Network	Mass Storage
	System requirement	Pentium 200Mhz, 64mb memory, 20mb hard disk space
	OS	windows98 SE, windows2000, windows ME, windows XP
	Sound card	Sound blaster compatible 16
	Display	Screen display above 640X480
	Earphone	3.5 earphone(mini plug/stereo) IMP less than 16
	USB	Mini jack (PC : A TYPE)
LCD 128x16DOT	Track	01~99(TRACK)
	Equalizer	NOR, ROC, POP, CLA, LIV
	Count	0h00m00s
	Repeat	A-B REPEAT / ONE REPEAT / NORMAL REPEAT / ALL REPEAT / RANDOM REPEAT
Power	1.5V, LR03, alkaline batteryx1EA("AAA"size or UM-4)	
Battery period	Play MP3	Approx. 7hours of play time from mid-sound output
Accessories	Cable to connect to Exterior device (1) / Install CD(1) / neck strap(1) / Stereo earphone(1) /battery(1) / USB cable(1) / manual(1)	
Size	86 x 28 x 16	

Free Manuals Download Website

<http://myh66.com>

<http://usermanuals.us>

<http://www.somanuals.com>

<http://www.4manuals.cc>

<http://www.manual-lib.com>

<http://www.404manual.com>

<http://www.luxmanual.com>

<http://aubethermostatmanual.com>

Golf course search by state

<http://golfingnear.com>

Email search by domain

<http://emailbydomain.com>

Auto manuals search

<http://auto.somanuals.com>

TV manuals search

<http://tv.somanuals.com>