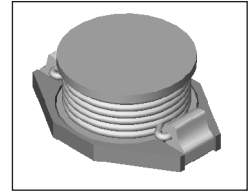


# SMT Power Inductor

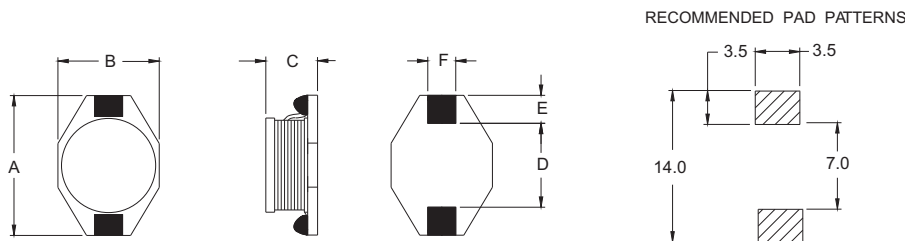
## SISH811 Type

### Features

- RoHS compliant.
- High current (3.5A, 10uH), SMD type.
- Unshielded.
- Self-leads, suitable for high density mounting.
- High energy storage and low DCR.
- Provided with embossed carrier tape packing.
- Ideal for power source circuits, DC-DC converter, DC-AC inverters inductor applications.
- In addition to the standard versions shown here, customized inductors are available to meet your exact requirements.



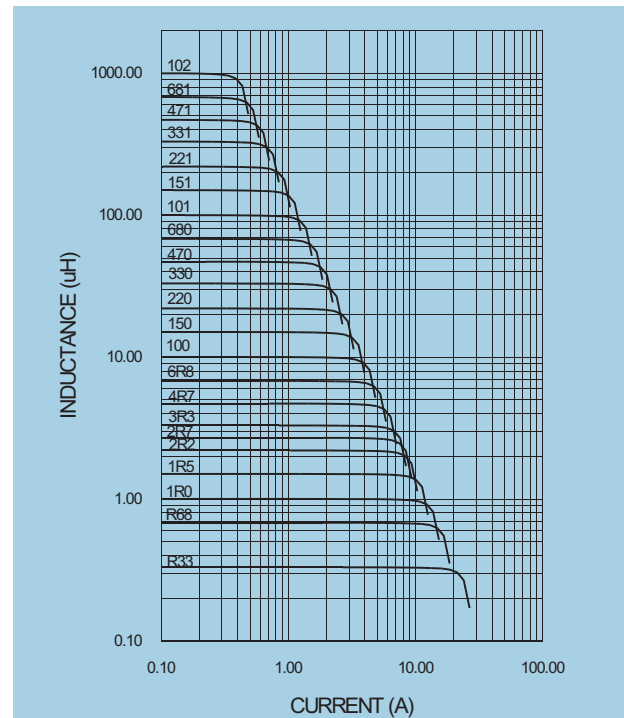
### Mechanical Dimension:



UNIT:mm/inch  
 A = 12.94 / 0.510Max.  
 B = 9.4 / 0.370 Max.  
 C = 11.4 / 0.449Max.  
 D = 7.7±0.2 / 0.311±0.008  
 E = 2.5±0.2 / 0.098±0.008  
 F = 2.5±0.2 / 0.098±0.008

### Electrical Characteristics: 25°C: 100KHz, 0.1V

PART NO.	$L^1$ (uH)	DCR ( $\Omega$ )MAX	$I_{sat}^2$ (A $\cdot$ c)	$I_r^3$ (A $\cdot$ c)
SISH811 - 2R2	2.2	0.006	17.0	9.0
SISH811 - 3R3	3.3	0.010	14.0	7.0
SISH811 - 4R7	4.7	0.013	11.0	6.0
SISH811 - 100	10.0	0.040	8.0	3.5
SISH811 - 150	15.0	0.050	7.0	3.0
SISH811 - 220	22.0	0.066	5.5	2.5
SISH811 - 330	33.0	0.080	4.0	2.0
SISH811 - 470	47.0	0.110	3.8	1.6
SISH811 - 680	68.0	0.170	3.0	1.2
SISH811 - 101	100.0	0.220	2.5	1.2
SISH811 - 151	150.0	0.340	2.0	0.9
SISH811 - 221	220.0	0.440	1.6	0.7
SISH811 - 331	330.0	0.700	1.2	0.6
SISH811 - 471	470.0	0.950	1.0	0.3
SISH811 - 681	680.0	1.200	1.0	0.2
SISH811 - 102	1000.0	2.000	0.8	0.1



1. Tolerance of inductance:  $\pm 20\%$ .
2.  $I_{sat}$  is the DC current which cause the inductance drop less than 10% of its nominal inductance without current.
3.  $I_r$  is the DC current which cause the surface temperature of the part increase less than 45°C.
4. Operating temperature : -20°C to 105°C (including self-temperature rise)



**DELTA ELECTRONICS, INC.**

(TAOYUAN PLANT CPBG) 252, SAN YING ROAD, KUEISAN INDUSTRIAL ZONE, TAOYUAN SHIEN, 333, TAIWAN, R.O.C.

TEL: 886-3-3591968; FAX: 886-3-3591991

<http://www.deltawww.com>

## Free Manuals Download Website

<http://myh66.com>

<http://usermanuals.us>

<http://www.somanuals.com>

<http://www.4manuals.cc>

<http://www.manual-lib.com>

<http://www.404manual.com>

<http://www.luxmanual.com>

<http://aubethermostatmanual.com>

Golf course search by state

<http://golfingnear.com>

Email search by domain

<http://emailbydomain.com>

Auto manuals search

<http://auto.somanuals.com>

TV manuals search

<http://tv.somanuals.com>