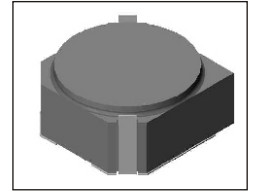


SMT Power Inductor

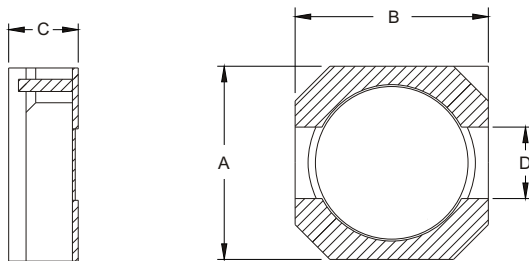
SIL620 Type

Features

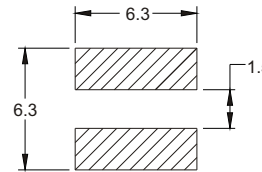
- RoHS compliant.
- Small size (5.6mm*5.6mm), Low profile (2.0mm max. height) SMD type.
- Magnetically shielded, suitable for high density mounting.
- High energy storage and low DCR.
- Provided with embossed carrier tape packing.
- Ideal for power source circuits, DC-DC converter, DC-AC inverters inductor applications.
- In addition to the standard versions shown here, customized inductors are available to meet your exact requirements.



Mechanical Dimension:



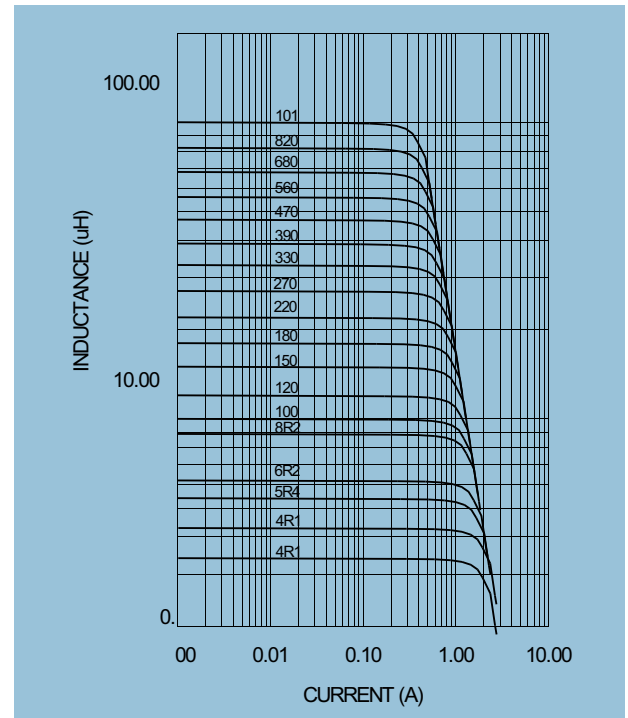
RECOMMENDED PAD PATTERNS



UNIT:mm/inch
 A = 6.0 / 0.236 Max.
 B = 6.0 / 0.236 Max.
 C = 2.0 / 0.079 Max.
 D = 2.0±0.1 / 0.079±0.004

Electrical Characteristics: 25°C: 100KHz, 0.1V

PART NO.	L ¹ (uH)	DCR (Ω) MAX	I _{rated} ² (Adc)
SIL620 - 1R1	1.1	0.030	3.70
SIL620 - 1R5	1.5	0.040	3.00
SIL620 - 2R5	2.5	0.048	2.50
SIL620 - 3R3	3.3	0.054	2.10
SIL620 - 4R1	4.1	0.057	1.95
SIL620 - 4R7	4.7	0.080	1.70
SIL620 - 6R0	6.0	0.100	1.50
SIL620 - 6R8	6.8	0.110	1.40
SIL620 - 8R9	8.9	0.140	1.25
SIL620 - 100	10.0	0.160	1.20
SIL620 - 120	12.0	0.215	1.10
SIL620 - 150	15.0	0.224	0.97
SIL620 - 180	18.0	0.247	0.85
SIL620 - 220	22.0	0.290	0.80
SIL620 - 270	27.0	0.330	0.75
SIL620 - 330	33.0	0.386	0.65
SIL620 - 390	39.0	0.520	0.57
SIL620 - 470	47.0	0.595	0.54
SIL620 - 560	56.0	0.665	0.50
SIL620 - 680	68.0	0.840	0.43
SIL620 - 820	82.0	0.978	0.41
SIL620 - 101	100.0	1.200	0.36



1. Tolerance of inductance : ± 30%.
2. I_{rated} is the DC current which cause the inductance drop less than 35% of its nominal inductance without current and the surface temperature of the part increase less than 45°C.
3. Operating temperature: -20°C to 105°C (including self-temperature rise).



DELTA ELECTRONICS, INC.

(TAOYUAN PLANT CPBG) 252, SAN YING ROAD, KUEISAN INDUSTRIAL ZONE, TAOYUAN SHIEN, 333, TAIWAN, R.O.C.

TEL: 886-3-3591968; FAX: 886-3-3591991

<http://www.deltawww.com>

Free Manuals Download Website

<http://myh66.com>

<http://usermanuals.us>

<http://www.somanuals.com>

<http://www.4manuals.cc>

<http://www.manual-lib.com>

<http://www.404manual.com>

<http://www.luxmanual.com>

<http://aubethermostatmanual.com>

Golf course search by state

<http://golfingnear.com>

Email search by domain

<http://emailbydomain.com>

Auto manuals search

<http://auto.somanuals.com>

TV manuals search

<http://tv.somanuals.com>