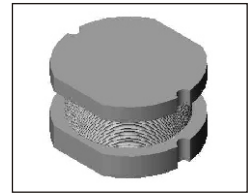


# SMT Power Inductor

## SI84 Type

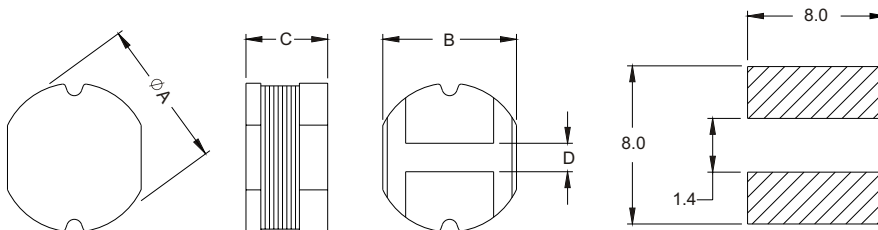
### Features

- RoHS compliant.
- Low profile (4.0mm max. Height) SMD type.
- Unshielded.
- Self-leads, suitable for high density mounting.
- High energy storage and low DCR.
- Provided with embossed carrier tape packing.
- Ideal for power source circuits, DC-DC converter, DC-AC inverters inductor applications.
- In addition to the standard versions shown here, customized inductors are available to meet your exact requirements.



### Mechanical Dimension:

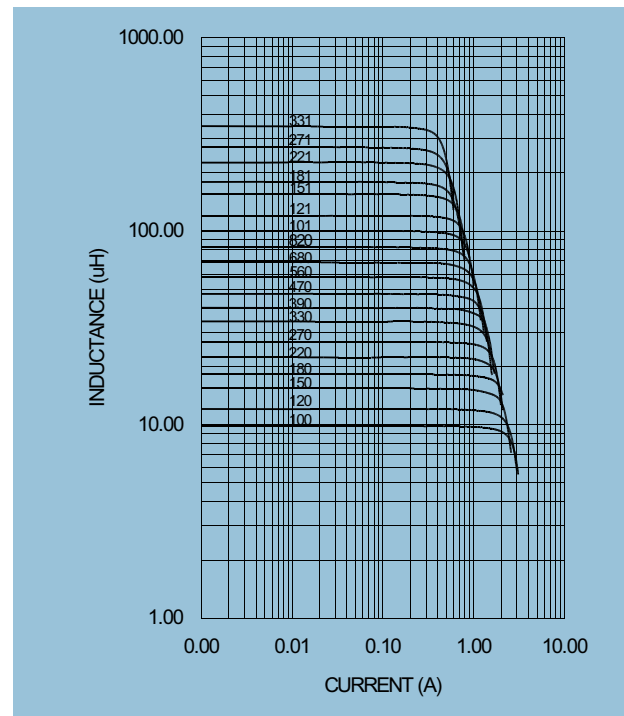
RECOMMENDED PAD PATTERNS



UNIT:mm/inch  
 A = 7.8 ± 0.2 / 0.307 ± 0.008  
 B = 7.0 ± 0.2 / 0.276 ± 0.008  
 C = 3.5 ± 0.5 / 0.138 ± 0.020  
 D = 1.5 ± 0.2 / 0.059 ± 0.008

**Electrical Characteristics:** 25°C, 100KHz, 0.1V for 1.2~4.7uH. 1KHz, 1.0V for 10uH~1000uH.

PART NO.	L <sup>1</sup> (uH)	DCR (Ω) MAX	I <sub>rated</sub> <sup>2</sup> (Adc)
SI84 - 1R2	1.2	0.008	8.00
SI84 - 2R2	2.2	0.015	4.50
SI84 - 4R7	4.7	0.041	2.00
SI84 - 100	10.0	0.080	1.44
SI84 - 120	12.0	0.089	1.39
SI84 - 150	15.0	0.104	1.24
SI84 - 180	18.0	0.111	1.12
SI84 - 220	22.0	0.129	1.07
SI84 - 270	27.0	0.153	0.94
SI84 - 330	33.0	0.170	0.85
SI84 - 390	39.0	0.217	0.74
SI84 - 470	47.0	0.252	0.68
SI84 - 560	56.0	0.282	0.64
SI84 - 680	68.0	0.332	0.59
SI84 - 820	82.0	0.406	0.54
SI84 - 101	100.0	0.481	0.51
SI84 - 121	120.0	0.536	0.49
SI84 - 151	150.0	0.755	0.40
SI84 - 181	180.0	1.022	0.36
SI84 - 221	220.0	1.200	0.31
SI84 - 271	270.0	1.306	0.29
SI84 - 331	330.0	1.495	0.28
SI84 - 471	470.0	2.300	0.24
SI84 - 102	1000.0	5.500	0.17



1. Tolerance of inductance : ±15% for 1.2~4.7uH, ±10% for 10~1000uH.
2. I<sub>rated</sub> is the DC current which cause the inductance drop less than 10% of its nominal inductance without current and the surface temperature of the part increase less than 45°C.
3. Operating temperature: -20°C to 105°C (including self-temperature rise).



**DELTA ELECTRONICS, INC.**

(TAOYUAN PLANT CPBG) 252, SAN YING ROAD, KUEISAN INDUSTRIAL ZONE, TAOYUAN SHIEN, 333, TAIWAN, R.O.C.

TEL: 886-3-3591968; FAX: 886-3-3591991

<http://www.deltawww.com>

## Free Manuals Download Website

<http://myh66.com>

<http://usermanuals.us>

<http://www.somanuals.com>

<http://www.4manuals.cc>

<http://www.manual-lib.com>

<http://www.404manual.com>

<http://www.luxmanual.com>

<http://aubethermostatmanual.com>

Golf course search by state

<http://golfingnear.com>

Email search by domain

<http://emailbydomain.com>

Auto manuals search

<http://auto.somanuals.com>

TV manuals search

<http://tv.somanuals.com>