

Dell™ E151FP Color Display

Quick Setup Guide



Safety Instructions

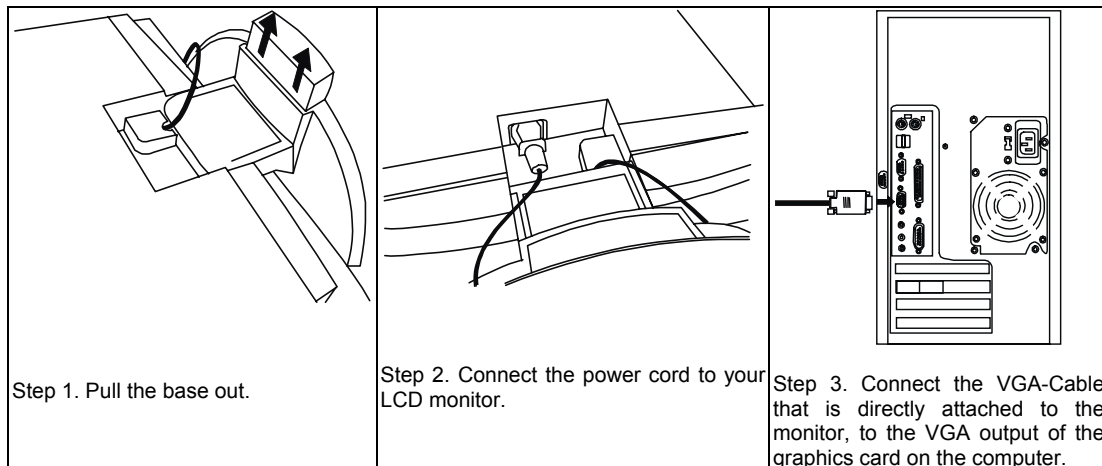
Observe the following safety guidelines when connecting and using your display:

- Be sure that your display is electrically rated to operate with the AC power available in your location.
- Locate your display near an easily accessible electrical outlet.
- Place the display on a solid surface and treat it carefully. The screen can be damaged if dropped, sharply hit, or touched with a sharp or abrasive implement.
- Put your display in a location with low humidity and a minimum of dust.
- Never use your display if the power cable has been damaged. Do not allow anything to rest on the power cable, and keep the cable away from where people could trip over it.
- Never insert anything metallic into the display openings. Doing so may create the danger of electric shock.
- To avoid electric shock, never touch the inside of the display. Only a qualified technician should open the display's case.
- Be sure to hold the plug, not the cable, when disconnecting the display from an electrical outlet.
- Openings in the display cabinet are provided for ventilation. To prevent overheating, these openings should not be blocked or covered. Also, avoid using the display on a bed, sofa, rug, or other soft surface. Doing so may block the ventilation openings in the bottom of the cabinet. If you put the display in a bookcase or some other enclosed space, be sure to provide adequate ventilation.
- Do not expose the display to rain or use it near water. If the display accidentally gets wet, unplug it and contact an authorized dealer immediately. You can clean the exterior of the display with a damp cloth when necessary, but be sure to unplug the display first.
- If your display does not operate normally—in particular, if there are any unusual sounds or smells coming from it—unplug the display immediately and contact an authorized dealer or service center.



Connecting Your Display to a Computer

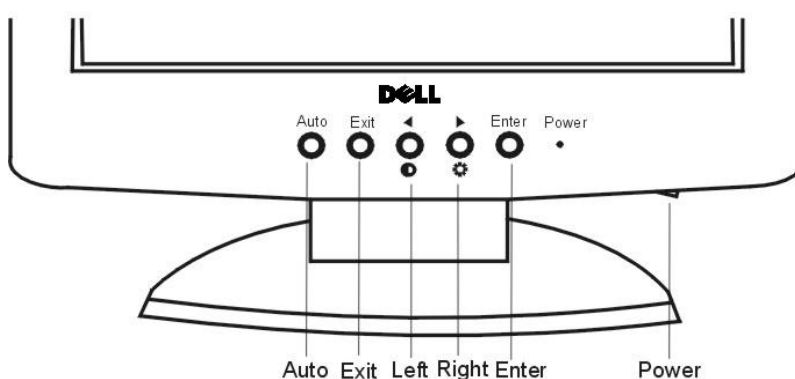
- (A) Make sure that the computer and monitor's power are both turned off. Please follow the steps to install your LCD monitor.



- (B) Connect the power cord at the back of the monitor to an AC power socket. Please make sure that the socket is not blocked or covered, so you can disconnect the unit from AC supply if you need to. Your monitor is equipped with an automatic power supply for a voltage range from 100 to 240 Volt at a frequency of 50 to 60 Hz. Be sure that your local power is within the supported range. If you are unsure, ask your electricity supplier.
- (C) Turn on your computer and display. If the display does not display an image, refer to the troubleshooting section of this guide.



Display Controls and Indicators



There are 6 keys for user's control including "Power", "Auto", "Exit", "Enter" and "Left/Right key". The following descriptions are the introduction of these keys.

1. **Power:** Turn the power on or off.
2. **Auto:** Adjust vertical position, phase, horizontal position and pixel clock automatically.
3. **Exit key:** Back to previous menu or exit OSD.
4. **Enter key:** Enter sub-menu; select items.
5. **Left/Right key:** Left/Right adjustment. Hot key for Brightness/Contrast adjustment.



Driver Installation

Use the display CD to install the appropriate display driver for your operating system.

Microsoft® Windows® XP Operating System

To manually install or update the driver, perform the following steps:

1. Insert the monitor CD into the CD-ROM drive.
2. Click **Start** → **Control Panel** → **Appearance & Themes** and then click the **Display** icon.
3. In the **Display Properties** window, click the **Settings** tab, and then click **Advanced**.
4. Click the **Monitor** tab, and then click **Properties** → **Driver** tab → **Update Driver**.
5. When the **Hardware Update Wizard** dialog box appears, choose "Install the software automatically," and click **Next>** and then **Finish** to complete the installation.
6. Close the **Display Properties** window.

Microsoft® Windows® Millennium Operating System

To manually install or update the driver, perform the following steps:

1. Click **Start** → **Settings** → **Control Panel** and then double-click **Display**.
2. In the **Display Properties** window, click the **Settings** tab, and then click **Advanced**.
3. Click the **Monitor** tab, and then click **Change** → **Specify the location of the driver** → **Next**.
4. When the **Update Device Driver Wizard** dialog box appears, select "Display a list of all the drivers in a specific location, so you can select the driver you want," and click **Next>**.
5. Insert the display CD into the CD-ROM drive, then click **Have Disk...**
6. Type **d: ** (change the drive letter to match your CD-ROM drive if it is not drive D) in the **Copy manufacturer's files from:** box, then click **OK**.
7. Click **Next>**, **Next>**, and then **Finish** to complete the installation.
8. Close the **Display Properties** window.

Microsoft® Windows® 2000 Operating System

To manually install or update the driver, perform the following steps:

1. Click **Start** → **Settings** → **Control Panel** and then double-click **Display**.
2. In the **Display Properties** window, click the **Settings** tab, and then click **Advanced**.
3. Click the **Monitor** tab, and then click **Properties** → **Driver** → **Update Driver**.
4. When the **Update Device Driver Wizard** dialog box appears, choose "Search for a suitable driver for my device," and click **Next>**.
5. Insert the display CD into the CD-ROM drive, type **d: ** (change the drive letter to match your CD-ROM drive if it is not drive D) in the **Copy manufacturer's files from:** box, and click **Next>** and then **Finish** to complete the installation.
6. Close the **Display Properties** window.

Microsoft® Windows® 98 Operating System

Windows 98 automatically detects the new display and displays the **Add New Hardware Wizard** dialog box if the display driver is not already installed.

1. Insert the display CD into the CD-ROM drive, and click **Next>** twice when the **Add New Hardware Wizard** dialog box appears.
2. Click the **CD-ROM drive** box to install the drivers from the CD and then click **Next>**.
3. Confirm that the driver was found on the CD, and click **Next>** twice to install the driver.
4. Click **Finish** to exit the **Add New Hardware Wizard** dialog box.

To manually install or update the driver, perform the following steps:

1. Click **Start→ Settings→ Control Panel** and then double-click **Display**.
2. In the **Display Properties** window, click the **Settings** tab, and then click **Advanced**.
3. Click the **Monitor** tab, and then click **Change**.
4. When the **Update Device Driver Wizard** dialog box appears, follow the steps in the previous paragraph.

Setting Display Resolution

For optimal display performance while using Microsoft® Windows® XP, Windows 2000, Windows 98, Windows 95 or Windows NT®, set the display resolution to 1024 X 768 as follows:

1. Click **Start→ Settings→ Control Panel**.
2. Double-click the **Display** icon in the **Control Panel** window, and then click the **Settings** tab.
3. In the Desktop area, move the sidebar to 1024 by 768 pixels. Then click **OK**.



Accessing the User's Guide Online or via CD

To view the latest display *User's Guide*, access the **SUPPORT** section of the Dell Web site (<http://support.dell.com>).

If you do not have Internet access, you can access the guide on the display CD:

1. Insert the display CD into your CD-ROM drive.
A start-up document should launch automatically; however, if the start-up document does not launch automatically, click **Start→ Run**, type `D:\monitor.htm`, and click **OK**. (Substitute the correct CD-ROM drive letter if it is not the D drive.)
2. Click the appropriate icon to open the User's Guide in the desired language.



NOTE: All applicable warranty and regulatory information regarding your display is contained in the *User's Guide* on your CD.



Troubleshooting Tips

Display Has No Power

If the display's power indicator is off and no image appears on the display, perform the following checks:

- Ensure that the power cable is fully inserted in the display's power port and the electrical outlet.
- Test the electrical outlet by plugging in a working electrical device such as a lamp.
- Ensure that the power button has been depressed, and wait for the power indicator to light.
- Try another power cable on the display. Use the computer's power cable and turn on the display with the signal cable disconnected. If the display is working correctly, a self-test pattern appears.

No Image Is Displayed on the Display

If the display power indicator is on but no image appears on the display, perform the following checks:

- Ensure that the video connector is seated properly. Tighten the connector screws securely with your fingers.
- Ensure that the computer is on.
- Increase brightness and contrast controls.
- Turn off the display and unplug the signal cable. Check the cable connector for bent or broken pins.
- With the signal cable still disconnected, turn on the display. If the display is working correctly, a self-test pattern appears.
- Perform a display reset or recall.

IMPORTANT!

Before contacting Dell for technical assistance, refer to the Troubleshooting section in the *User's Guide* on your display CD. This section contains detailed information for resolving most display problems.

Information in this document is subject to change without notice.

© 2001 Dell Computer Corporation. All rights reserved.

Reproduction in any manner whatsoever without the written permission of Dell Computer Corporation is strictly forbidden.

Trademarks used in this text: *Dell* and the *DELL* logo are trademarks of Dell Computer Corporation; *Microsoft* and *Windows* are registered trademarks of Microsoft Corporation.

Other trademarks and trade names may be used in this document to refer to either the entities claiming the marks and names or their products. Dell Computer Corporation disclaims any proprietary interest in trademarks and trade names other than its own.

November 2001

Free Manuals Download Website

<http://myh66.com>

<http://usermanuals.us>

<http://www.somanuals.com>

<http://www.4manuals.cc>

<http://www.manual-lib.com>

<http://www.404manual.com>

<http://www.luxmanual.com>

<http://aubethermostatmanual.com>

Golf course search by state

<http://golfingnear.com>

Email search by domain

<http://emailbydomain.com>

Auto manuals search

<http://auto.somanuals.com>

TV manuals search

<http://tv.somanuals.com>