

Safety And Regulatory Information

Safety & Regulatory Information

The following sections contain notices for various countries:

Caution

This product is intended for use with FCC/CE certified computer equipment. Please check the equipment operating/installation manual and/or with the equipment manufacturer to verify/confirm if your equipment is suitable prior to the installation or use of the product.

Notice for USA

FCC Part 15: This equipment has been tested and found to comply with the limits for a Class B digital device, pursuant to Part 15 of the FCC Rules. These limits are designed to provide reasonable protection against harmful interference in a residential installation. This equipment generates, uses and can radiate radio frequency energy and, if not installed and used in accordance with the instructions, may cause harmful interference to radio communications. However, there is no guarantee that interference will not occur in a particular installation. If this equipment does cause harmful interference to radio or television reception, which can be determined by turning the equipment off and on, the user is encouraged to try to correct the interference by one or more of the following measures:

- Reorient or relocate the receiving antenna.
- Increase the separation between the equipment and receiver.
- Connect the equipment into an outlet on a circuit different from that to which the receiver is connected.
- Consult the dealer or an experienced radio/TV technician for help.

This device complies with part 15 of the FCC Rules. Operation is subject to the following two conditions:

1. This device may not cause harmful interference, and
2. This device must accept any interference received, including interference that may cause undesired operation.

Caution

To comply with the limits of the Class B digital device, pursuant to Part 15 of the FCC Rules, this device must be installed with computer equipment certified to comply with Class B limits.

All cables used to connect to the computer and peripherals must be shielded and grounded. Operation with non-certified computers or non-shielded cables may result in interference to radio or television reception.

Modification

Any changes or modifications not expressly approved by the grantee of this device could void the user's authority to operate the device.

State of California Proposition 65:

WARNING: Handling the cord(s) on this product may expose you to lead, a chemical known to the State of California to cause cancer and birth defects or other reproductive harm. Wash your hands after handling.

Notice for Canada

This Class B digital apparatus complies with Canadian ICES-003. Cet appareil numérique de la classe B est conforme à la norme NMB-003 du Canada.

Canadian Class B Statement

This digital device does not exceed the Class B limits for radio noise emissions from digital apparatus as set out in the interference-causing equipment standard entitled "Digital Apparatus," ICES-003 of the Department of Communications.

Cet appareil numérique respecte les limites de bruits radioélectriques applicables aux appareils numériques de Classe B prescrites dans la norme sur le matériel brouilleur: "Appareils Numériques," NMB-003 édictée par le ministre des Communications.

MODIFICATION:

Any changes or modifications not expressly approved by the grantee of this device could void the user's authority to operate the device. Toute modification non approuvée explicitement par le fournisseur de licence de l'appareil peut entraîner l'annulation du droit de l'utilisateur à utiliser l'appareil.

EN English

Specifications
Creative Inspire T3100
 Satellite speaker:
6 watts RMS per channel
 Subwoofer:
17 watts RMS
 Signal-to-Noise Ratio:
80dB
 Frequency Response:
40Hz - 20kHz
 These specifications apply to Creative Inspire T3100 operating from the supplied 12V AC 2.9A power adapter.

ES Español

Especificaciones
Creative Inspire T3100
 Altavoz auxiliar:
6 vatios de carga eficaz por canal
 Altavoz de graves:
17 vatios de carga eficaz
 Relación de señal a ruido:
80dB
 Respuesta de frecuencias:
40Hz a 20kHz
 Estas especificaciones se aplican para el uso del Creative Inspire T3100 con el adaptador de alimentación de 12V AC 2.9A suministrado.

TU Türkçe

Spesifikasyonlar
Creative Inspire T3100
 Satelit hoparlör:
Kanal başına 6 watt RMS
 Subwoofer:
17 watt RMS
 İşaret-Gürültü Gücü Oranı:
80 dB
 Frekans Yanıtı:
40 Hz - 20 kHz
 Bu spesifikasyonlar, 12V DC, 2.9A güç adaptörüyle beslenen Creative Inspire T3100 cihazı için geçerlidir.

JP 日本語

仕様
Creative Inspire T3100
 サテライトスピーカー:
6W RMS/チャンネル
 サブウーファー:
17W RMS
 SNR(S/N比):
80dB
 周波数特性:
40Hz - 20kHz
 これらの仕様は、付属の12V AC 2.9A電源アダプターで動作させた場合です。

December

© 2006. Creative Technology Ltd. All rights reserved. The Creative logo and Creative Inspire are either registered trademarks or trademarks of Creative Technology Ltd. in the United States and other countries. All other logos, brand or product names are trademarks or registered trademarks of their respective holders and are hereby recognised as such. All specifications are subject to change without notice. Use of this product is subject to a limited warranty. Actual contents may differ slightly from those pictured.

FR Français

Spécifications
Creative Inspire T3100
 Haut-parleur satellite:
6 watts RMS par canal
 Caisson de basse:
17 watts RMS
 Rapport signal/bruit:
80dB
 Réponse en fréquence:
40Hz - 20kHz
 Ces spécifications s'appliquent au modèle Creative Inspire T3100 fonctionnant avec la prise d'alimentation 12V AC 2.9A fournie.

BP Português do Brasil

Especificações
Creative Inspire T3100
 Alto-falante:
RMS de 6 watts por canal
 Subwoofer:
RMS de 17 watts
 Relação sinal/ruído:
80dB
 Resposta de frequência:
40Hz a 20kHz
 Estas especificações aplicam-se a Creative Inspire T3100 operando a partir do adaptador de alimentação de 12V AC 2.9A fornecido.

CT 繁體中文

規格
Creative Inspire T3100
 環繞喇叭:
每聲道 6 瓦 RMS
 低音喇叭:
17 瓦 RMS
 訊噪比:
80dB
 頻率響應:
40Hz - 20kHz
 這些規格適用於 Creative Inspire T3100 由附帶的 12V AC 2.9A 變壓器供電時的工作狀態。

CS 简体中文

规格
Creative Inspire T3100
 卫星音箱:
额定功率 6 瓦(每声道)
 低音炮:
额定功率 17 瓦
 信噪比:
80dB
 频率响应:
40Hz - 20kHz
 本规格只适用于 Creative Inspire T3100 由附带的 12V 2.9A 交流变压器提供电力的工作状态。

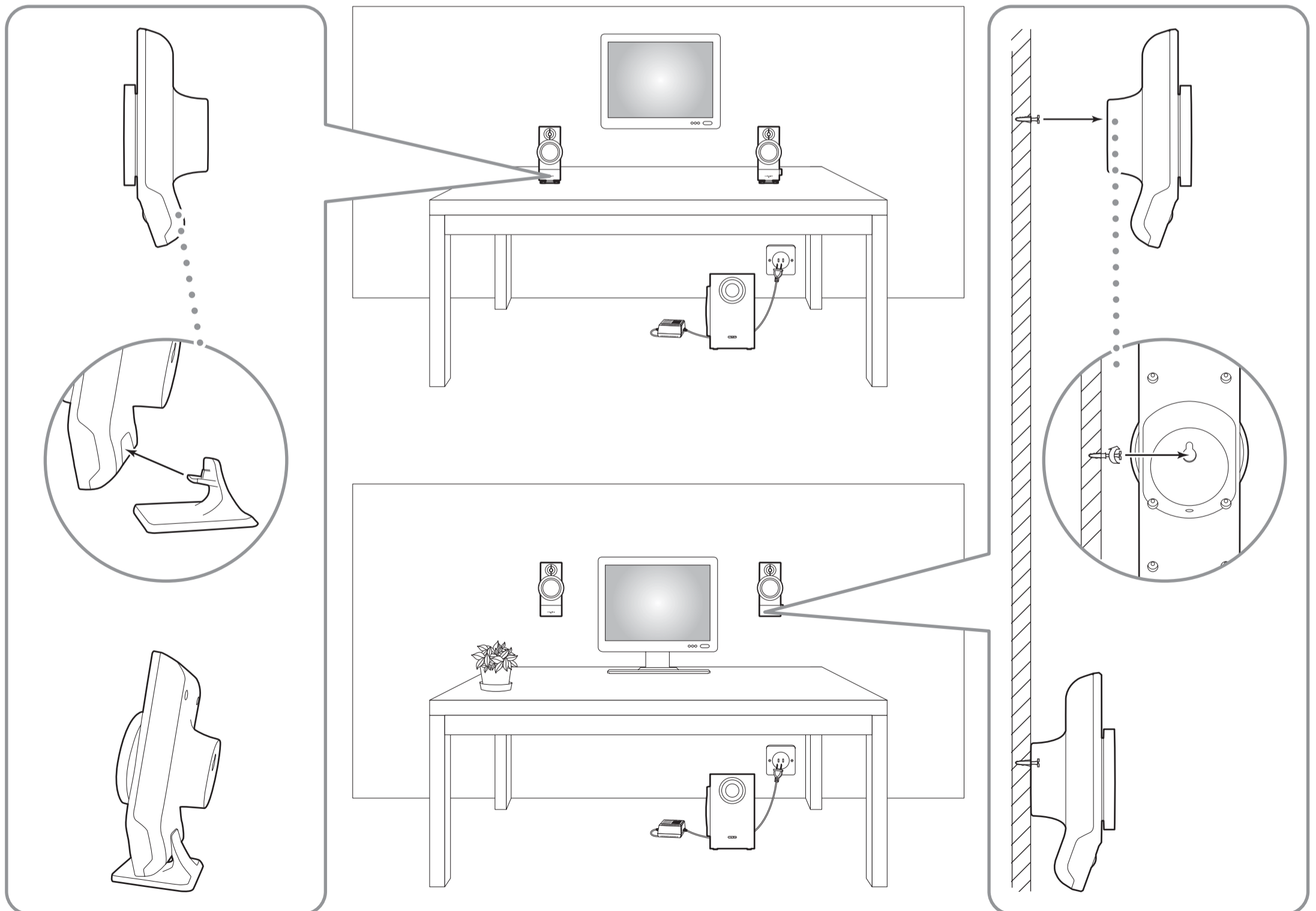
P/N 03MF033500000 Rev. A

CREATIVE



- EN Quick Start Guide
- FR Démarrage Rapide
- ES Guía Rápida
- BP Introdução rápida
- TU Hızlı Başlat Kılavuzu
- CT 快速開始指南
- JP 快速開始指南
- CS 快速安装指南

INSPIRE® T3100



Free Manuals Download Website

<http://myh66.com>

<http://usermanuals.us>

<http://www.somanuals.com>

<http://www.4manuals.cc>

<http://www.manual-lib.com>

<http://www.404manual.com>

<http://www.luxmanual.com>

<http://aubethermostatmanual.com>

Golf course search by state

<http://golfingnear.com>

Email search by domain

<http://emailbydomain.com>

Auto manuals search

<http://auto.somanuals.com>

TV manuals search

<http://tv.somanuals.com>