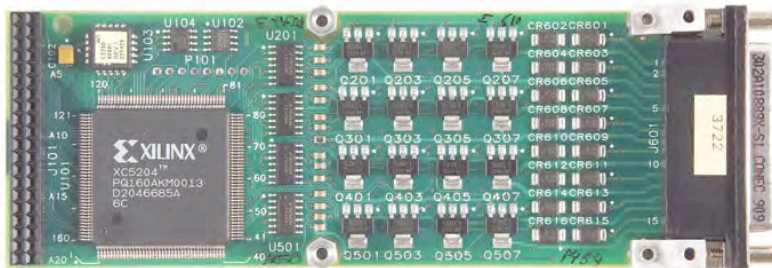




# M223 16 Bit Digital I/O M Module

The M223 (formerly Agilent E2290A) provides 16 data/actuator lines. These data lines offer TTL compatible inputs and open drain outputs up to 30 volts. Each I/O line also provides active pull-up and pull-down for actuating external devices such as relays or attenuators. The module also has the ability to generate an interrupt based upon matching of a pre-stored pattern in a Compare Register. De-bounce on inputs is available.



## Specifications:

### Output Characteristics:

$I_{out}$ (High):	20mA (source)
$I_{out}$ (Low):	200 mA (sink)
$V_{out}$ (High):	2.9V (TTL); 30V (OC)
$V_{out}$ (Low):	0.4V

### Input Characteristics:

$I_{in}$ (High):	n/a
$I_{in}$ (Low):	n/a
$V_{in}$ (High):	1.8V
$V_{in}$ (Low):	0.8V

### Input De-bounce Control:

Input Register:	none or 3 ms
Pattern Register:	Fixed at 3 ms

### Bit Addressing Options:

Two 8 bit ports, 1 16 bit,  
Or individual bits

**Connectors:** 44 pin DSUB  
(Female)

### Temperature:

Operating:	0°C to 55°C
Storage:	-40°C to 75°C

**Power:** +5V @ 0.385 A

## M Module Compliance

Complies with ANSI/VITA Std 12-1996 for single-wide M Modules.

Data Transfers	16 bit
Interrupts	INTC

Compatible with VXI, VME, PCI, PXI, CPCI & Ethernet Carriers

## Applications

- Control of external relays
- Monitoring of digital events

## Ordering Information

**Part Number** 11029580-0001

## Additional Information

User Manuals for C&H carriers and this module can be found on our website at [www.chtech.com](http://www.chtech.com).

## Free Manuals Download Website

<http://myh66.com>

<http://usermanuals.us>

<http://www.somanuals.com>

<http://www.4manuals.cc>

<http://www.manual-lib.com>

<http://www.404manual.com>

<http://www.luxmanual.com>

<http://aubethermostatmanual.com>

Golf course search by state

<http://golfingnear.com>

Email search by domain

<http://emailbydomain.com>

Auto manuals search

<http://auto.somanuals.com>

TV manuals search

<http://tv.somanuals.com>