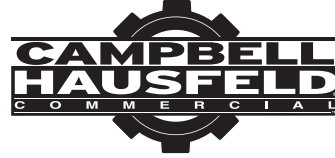
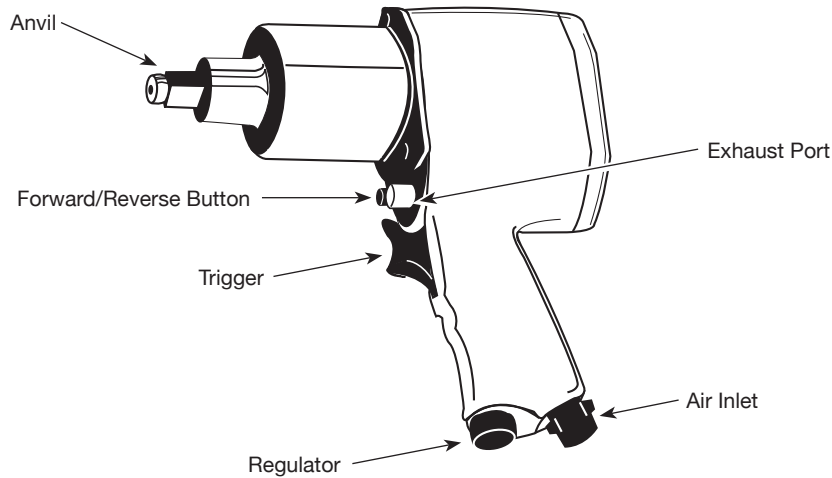


3/4 inch Impact Wrench



MODEL: CL158600AV



Description

Impact wrenches are designed for removing and installing nuts and bolts. A rotating mechanism delivers a series of blows that produces torque to remove or install a fastener.

Specifications

Average	6.1 SCFM @ 90 PSIG (18% usage)
Air Consumption	
Continuous	34.2 SCFM @ 90 PSIG (100% usage)
Air Consumption	
Max Operating Pressure	90 PSIG
Max RPM	5000
Max Torque	1,100 ft.lb
Working Torque	200-750 ft.lb
Impact Mechanism	
Type	Pin Clutch
Bolt Capacity	1 inch
Air Inlet	1/4 inch NPT (Female)
Minimum Hose Size	3/8 inch
Drive	3/4 inch Sq
Weight	10.5 lbs.

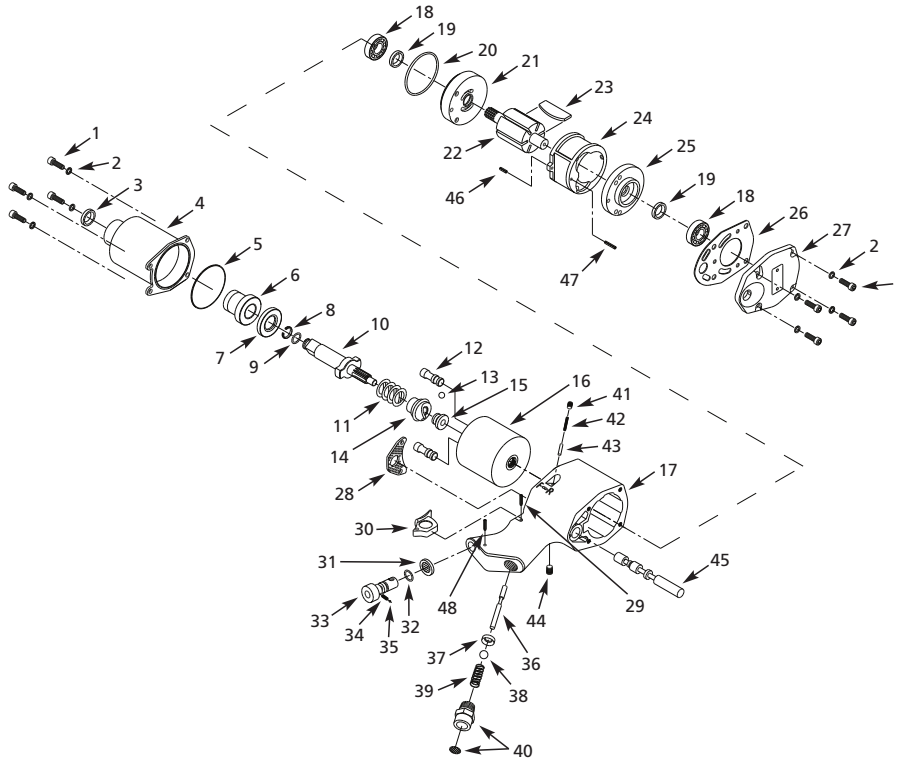
**For Replacement Parts or Technical Assistance,
Call 1-855-504-5678**

Please provide following information:

- Model number
- Serial number (if any)
- Part description and number as shown in parts list

Address any correspondence to:

Campbell Hausfeld
Attn: Customer Service
100 Production Drive
Harrison, OH 45030 U.S.A.



REGISTER YOUR PRODUCT ONLINE NOW!
<http://reg.ch-commercial.com>

REPLACEMENT PARTS LIST

Ref. No.	Description	Part No.	Qty.
1	Screw	●	8
2	Split lock washer	●	8
3	Oil Seal	■	1
4	Front housing	SV171000AV	1
5	O-ring	■	1
6	Anvil bushing	SV171200AV	1
7	Spacer	□	1
8	Anvil collar	■▲	1
9	O-ring	■▲	1
10	Anvil	▲	1
11	Spring	□	1
12	Hammer pin	▲	2
13	Cam ball	□	1
14	Drive cam	□	1
15	Foundation cam	□	1
16	Hammer cage	SV500100AV	1
17	Housing with valve sleeve	--	1
18	Ball bearing	SV500200AV	2
19	Oil seal	■▼	2
20	O-ring	▼	1
21	Front end plate	▼	1
22	Rotor	SV500300AV	1
23	Rotor blade	★	6
24	Cylinder	SV171500AV	1
25	Rear end plate	▼	1
26	Rear gasket	■	1
27	Back cover	SV171800AV	1
28	Exhaust deflector	■	1
29	Roll pin	■◆	1
30	Trigger	■◆	1
31	Locating ring	■○	1
32	O-ring	■○	1
33	Air regulator	○	1
34	Spring	○	1
35	Steel ball	○	1

Continued on next page

REPLACEMENT PARTS LIST (CONTINUED)

Ref. No.	Description	Part No.	Qty.
36	Valve stem	†	1
37	Ball seat	■ †	1
38	Steel ball	†	1
39	Spring (double taper)	†	1
40	Air inlet with screen	†	1
41	Screw	● *	1
42	Spring	■ *	1
43	Forward/reverse pin	■ *	1
44	Oil port screw	■ ●	1
45	Reverse valve	SV500400AV ■	1
46	Roll pin	■	1
47	Roll pin	■	1
48	Roll pin	○	1

REPLACEMENT PARTS KITS

Ref. No.	Description	Part No.
■	Tune-up kit	SV500500AV
▲	Impact mechanism kit	SV500600AV
●	Screw kit	SV153603AV
◆	Trigger kit	SV500700AV
▼	End plate kit	SV500800AV
□	Cam foundation kit	SV500900AV
○	Regulator kit	SV501000AV
†	Air valve kit	SV153613AV
*	Forward/reverse pin kit	SV153614AV
★	Blade kit	SV153615AV
--	Not available	

Free Manuals Download Website

<http://myh66.com>

<http://usermanuals.us>

<http://www.somanuals.com>

<http://www.4manuals.cc>

<http://www.manual-lib.com>

<http://www.404manual.com>

<http://www.luxmanual.com>

<http://aubethermostatmanual.com>

Golf course search by state

<http://golfingnear.com>

Email search by domain

<http://emailbydomain.com>

Auto manuals search

<http://auto.somanuals.com>

TV manuals search

<http://tv.somanuals.com>