



USER GUIDE

USB 2.0 FAST ETHERNET ADAPTER CABLE

Model: 39998

TABLE OF CONTENTS

Introduction.....	2
Features.....	3
System Requirements.....	4
Package Contents.....	5
Software/Device installation-Win 2000, XP, Vista, Win 7.....	6
Software/Device Installation-Win 98 and ME.....	8
Verify Installation.....	9
Explanation of LEDs.....	10
Un-installation.....	11
Troubleshooting.....	12
Technical Specifications.....	13
Cables To Go One Year Warranty.....	14
Important Safety Information.....	15

INTRODUCTION

Thank you for purchasing the USB 2.0 Fast Ethernet Adapter Cable from Cables To Go. With its 480 Mbps of available bandwidth, you get true 10/100 network access. The plug-and-play design makes this adapter the most convenient and efficient way to connect a laptop or desktop computer to a fast ethernet network. With our fast ethernet adapter, you can experience the full speed of your fast ethernet network without the need for opening your PC and adding internal network adapters. Our adapter allows you to share the internet or printers, transfer files, compete in multiplayer games and more at speeds up to 200 Mbps (in full duplex mode). The portable, compact size makes it ideal for use with laptops. This adapter cable is hot-swappable and 100% compatible with both USB 2.0 and 1.1 hardware. **We recommend that you read this manual thoroughly and retain for future reference.**

FEATURES

- ❖ IEEE 802.3u 100 BASE-T, TX compatible
- ❖ Supports full duplex or half duplex mode
- ❖ Supports suspended mode and remote wakeup
- ❖ Compliant with the standard specification of USB 1.1 and 2.0

SYSTEM REQUIREMENTS

- ❖ A USB-enabled PC
- ❖ USB 2.0 host controller
- ❖ Windows® 98/98SE/ME/2000/XP/Vista/Windows 7

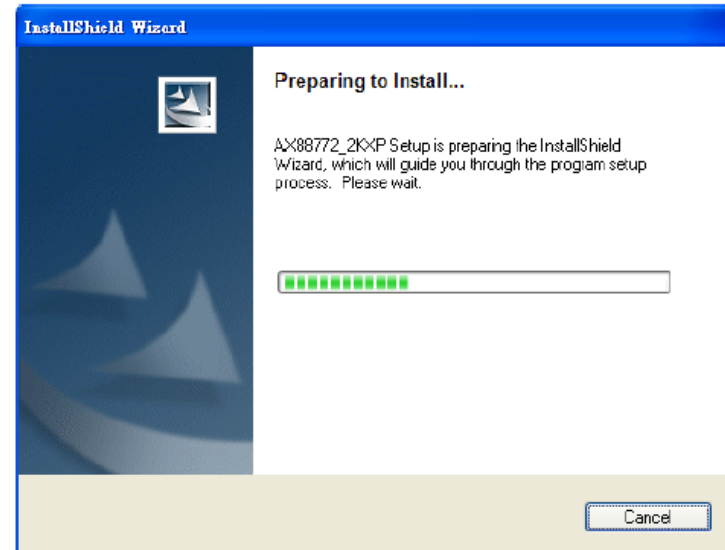
PACKAGE CONTENTS

- ❖ (1) USB 2.0 Fast Ethernet Adapter Cable
- ❖ Installation CD
- ❖ User Guide

SOFTWARE/DEVICE INSTALLATION-WIN 2000, XP, VISTA, WIN 7

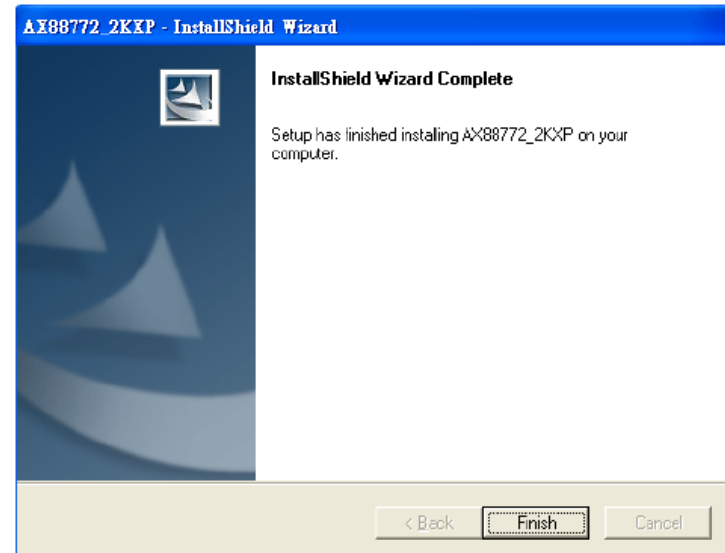
Step 1

Insert the CD into your CD-ROM. A menu should appear. Click the “39998-USB 2.0 Fast Ethernet” button and then on the next menu, click the button that represents your current operating system. This will begin the AX88772 Windows Driver Setup Program. The following is an example of AX88772 WinXP/2K driver setup program for users’ reference.



Step 2

The setup program will auto-install AX88772 WinXP/2K driver on your platform and the driver should work fine now after seeing the driver installation completion message.



SOFTWARE/DEVICE INSTALLATION-WIN 2000, XP, VISTA, WIN 7

Step 3

Plug the USB 2.0 Fast Ethernet Adapter into a USB port. Windows will recognize the adapter and you are now ready to use it by plugging in your network cable to the RJ45 female port.

The adapter will be labeled as a Local Area Connection (or something similar) in your Network Connections folder.

SOFTWARE/DEVICE INSTALLATION-WIN 98 AND ME

Step 1

Plug in the USB 2.0 Fast Ethernet Adapter into a USB port on your PC.

Step 2

Windows 98/ME users will be asked to select a driver location. Check ONLY specify a location, and then type (or browse to) the following. (Substitute D: for the letter of your CD-ROM drive)

❖ Windows 98_ME\AX88772_772A_WinME98SE_v3.0.3.12

Step 3

Windows will find the driver it needs and install it. Continue to click *Next* to advance through the wizard, and finally, click *Finish* when the wizard is complete.

Step 4

Congratulations! The adapter is installed and you are ready to use. You can plug in your network cable to the RJ45 female port on the USB 2.0 Fast Ethernet Adapter.

The adapter will be labeled as a Local Area Connection (or something similar) in your Network Connections folder.

VERIFY INSTALLATION

To VERIFY SUCCESSFUL INSTALLATION IN WINDOWS 98SE/ME

1. From the main desktop, double-click **My Computer**; double-click **Control Panel**, **System**, and then **Device Manager**.
2. You should see a category called **Network Adapters**, and a device called **Asix AX88772 USB to Fast Ethernet Adapter** (or something similar).

To VERIFY SUCCESSFUL INSTALLATION IN WINDOWS 2000

1. From the main desktop, right-click **My Computer**; select **Properties**. Click the **Hardware** tab, then **Device Manager**.
2. You should see a category called **Network Adapters**, and a device called **Asix AX88772 USB to Fast Ethernet Adapter** (or something similar).

To VERIFY SUCCESSFUL INSTALLATION IN WINDOWS XP, VISTA, AND WINDOWS 7

1. From the Start menu, click **Control Panel**, then **System**. (Make sure you are in Classic View).
2. Click the **Hardware** tab, then **Device Manager**. 3. You should see a category called **Network Adapters**, and a device called **Asix AX88772 USB to Fast Ethernet Adapter** (or something similar).

EXPLANATION OF LEDs

The top of the USB 2.0 Fast Ethernet Adapter has a series of LED's to provide you with at-a-glance diagnostic and status information.

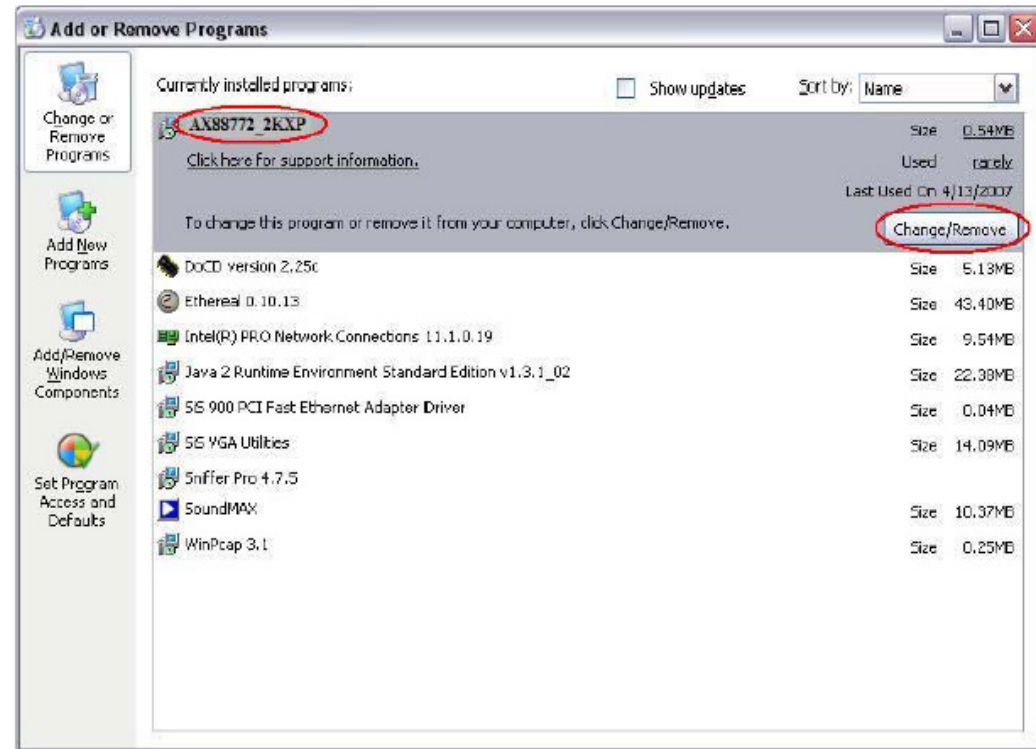
LINK/ACT – This is a yellow LED that when lit, tells you that you have a good connection to your network. If it is not lit, check your Ethernet cable.

ACT100M – This tells you that you are connected to a 100BaseT (100 Mb/s) network.

ACT10M – This tells you that you are connected to a 10BaseT (10 Mb/s) network.

UN-INSTALLATION

Users can uninstall the AX88772 driver package from the following “Add or Remove Programs” dialog if necessary.



TROUBLESHOOTING

Once installed, Windows will treat the adapter as it would any standard Ethernet connection. Use whatever tools, programs, or configurations you would normally use to utilize your computer on an Ethernet network.

Cables To Go can only assist with questions or issues related to installing the adapter itself or the adapter drivers. For assistance with other issues, please consult the following list:

- For questions about using your computer on the network, please utilize the Windows help files and wizards.
- If you need help connecting your computer to the Internet, contact your ISP (Internet Service Provider).
- For questions about utilizing or configuring network programs such as games, file transfer programs, or data sharing applications, contact the makers of the specific program you are trying to use.

Please visit our website at <http://www.cablestogo.com> for driver updates and technical support.

TECHNICAL SPECIFICATIONS

Product No.	39998
Complies USB Rev.	1.1 and 2.0
Connectors	USB A Male RJ45 Female
Housing	Plastic
Product Dimension	70mm x 38.7mm x 24.2mm
Product Weight	0.20 lbs
USB Cable Length	7.5 in.

CABLES TO GO™ ONE YEAR WARRANTY

At Cables To Go, we want you to be totally confident in your purchase. That is why we offer a one year warranty on this device. If you experience problems due to workmanship or material defect for the duration of this warranty, we will repair or replace this device. To request a Return Merchandise Authorization (RMA) number, contact customer service at 1-800-506-9606 or www.cablestogo.com.



Cables To Go
3555 Kettering Blvd.
Moraine, OH 45439
1-800-506-9607
www.cablestogo.com

IMPORTANT SAFETY INFORMATION

! Do not plug the unit in any outlet that does not have enough current to allow the device to function. Refer to the specifications in this manual for power level of the unit.

! Liquid:

If this unit or its corresponding power adapter has had liquid spilled on or in it, do not attempt to use the unit. Do not attempt to use this product in an outdoor environment as elements such as rain, snow, hail, etc. can damage the product.

! In case of a storm, it is recommended that you unplug this device from the outlet.

! Avoid placing this product next to objects that produce heat such as portable heaters, space heaters, or heating ducts.

! THERE ARE NO USER SERVICEABLE PARTS

Do not attempt to open this product and expose the internal circuitry. If you feel that the product is defective, unplug the unit and refer to the warranty information section of this manual.

©2009 Cables To Go. Microsoft and Vista are either registered trademarks or trademarks of Microsoft Corporation in the United States and/or other countries. This product is not endorsed or manufactured by Microsoft Corporation.

For more information on this product or to check for updated drivers, manuals or frequently asked questions please visit our website.

www.cablestogo.com



VER. 1.0.10.1.09

Free Manuals Download Website

<http://myh66.com>

<http://usermanuals.us>

<http://www.somanuals.com>

<http://www.4manuals.cc>

<http://www.manual-lib.com>

<http://www.404manual.com>

<http://www.luxmanual.com>

<http://aubethermostatmanual.com>

Golf course search by state

<http://golfingnear.com>

Email search by domain

<http://emailbydomain.com>

Auto manuals search

<http://auto.somanuals.com>

TV manuals search

<http://tv.somanuals.com>