


P-touch 55

Before using the P-touch, read this instruction leaflet, and then keep it in a handy place for future reference.

With this machine, use only tape cassettes bearing the  logo.

For a list of the tape cassettes that can be used with this machine, refer to Accessories at the bottom of this page.

The stylish and portable PT-55 allows you to quickly and easily print labels anywhere you go. Simply switch on the P-touch, enter the text, and then print out your label. You can also choose from various character sizes, styles, and framing/background patterns in addition to underlining. In addition, you can specify the length of the label. The text can be printed on either one or two lines and can include special symbols and accented characters. Various tape colours and two tape widths (9 mm and 12 mm) are available for creating personalised labels.

Care and precautions

- Clean the machine using only a soft, dry cloth.
- Use only **AAA-size (LR03) alkaline batteries**.
- Do not expose the machine or the tape cassettes to high temperatures, high humidity, or excessive dust.
- If you do not intend to use the machine for an extended period of time, remove the batteries.
- Do not touch the tape cutter button while printing.
- Do not touch the cutter blade.
- Do not block the tape exit slot. (Fig. 1)
- Do not put labels in your mouth.
- Do not affix labels to skin.

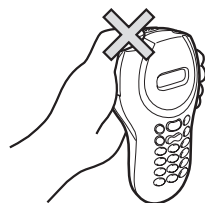
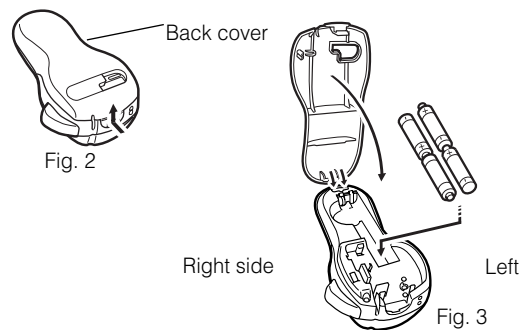


Fig. 1

Installing/replacing batteries

- 1) Remove the back cover by pressing in the rough area at the top end of the machine and pulling off the cover. (Fig. 2)
- 2) If a tape cassette is already installed, remove it. **For details on removing the tape cassette, refer to Installing/changing the tape cassette.**
- 3) If batteries are already installed, remove them.
- 4) Insert **four new AAA-size (LR03) alkaline batteries** as shown below. (Fig. 3) **Be sure that the two batteries on the left side of the P-touch are inserted with their positive poles pointing toward the bottom end of the machine and that the two batteries on the right side of the P-touch are inserted with their positive poles pointing to the top end of the machine. Always replace all four batteries at the same time using brand new ones.**
- 5) Insert the tape cassette. **For details on inserting the tape cassette, refer to Installing/changing the tape cassette.**
- 6) Attach the back cover by inserting the two hooks on the bottom end of the cover into the matching slots on the bottom end of the machine, then pushing down firmly on the cover until it snaps into place.



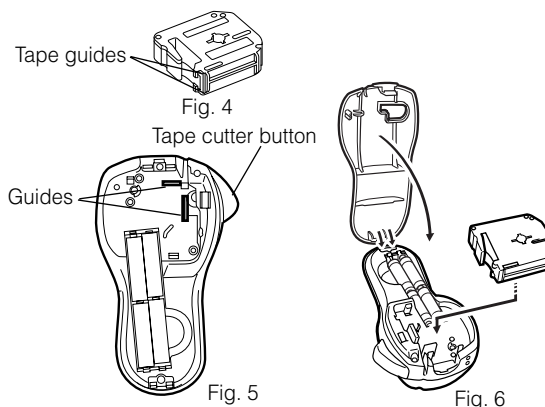
Installing/changing the tape cassette

- 1) Remove the back cover by pressing in the rough area at the top end of the machine and pulling off the cover.
- 2) If a tape cassette is already installed, remove it by pulling it straight out.
- 3) Make sure that the end of the tape feeds under the tape guides as shown below. (Fig. 4) **If you are installing a new tape cassette, be sure to remove the paper tab.**
- 4) Insert the tape cassette, making sure that it snaps into place. **Make sure that the tape cassette fits properly around the two guides in the cassette compartment.** (Fig. 5)
- 5) Attach the back cover by inserting the two hooks on the bottom end of the cover into the matching slots on the bottom end of the machine, then pushing down firmly on the cover until it snaps into place. (Fig. 6)

The amount of tape remaining in the cassette is visible through the window in the back of the P-touch.
When green tape is fed out, the tape cassette is empty.


CAUTION

- Be sure to use only the tape cassettes listed in **Accessories**. The following tape cassettes can NOT be used with the PT-55 (i.e. tapes with a metallic appearance):
M-531, M-731, M-831, M-931, M-E31, M-521, M-721, M-821, M-921 and M-E21



Cleaning the print head

When dust accumulates on the print head, blank horizontal lines appear through the printed label. If this occurs, clean the print head.

- 1) Turn off the P-touch.
- 2) Remove the back cover by pressing in the rough area at the top end of the machine and pulling off the cover, and then remove the tape cassette.
- 3) Use a dry cotton swab to gently wipe the print head and the rubber pinch roller with an up-and-down motion. (Fig. 7)
- 4) Insert the tape cassette, and then attach the back cover by inserting the two hooks on the bottom end of the cover into the matching slots on the bottom end of the machine, then pushing down firmly on the cover until it snaps into place.
- 5) Turn on the machine, enter some text, and then press .
- 6) If blank lines still appear in the printed label, repeat steps 1 through 4 using a cotton swab dipped in isopropyl (rubbing) alcohol.

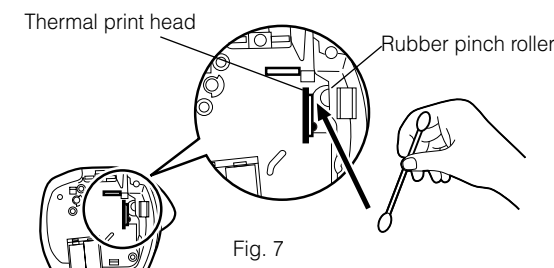


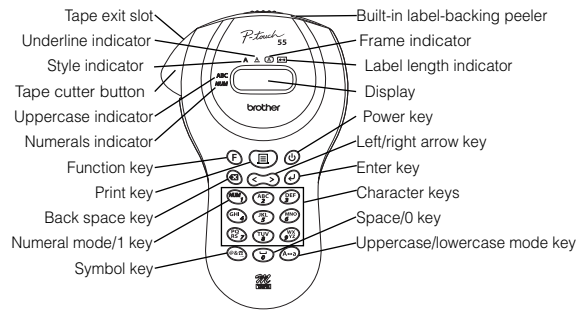
Fig. 7

Accessories

The following accessories are available for the PT-55.

Cassettes with 8-meter long tape	12 mm	9 mm
Black characters on white adhesive	M-K231	M-K221
Red characters on white adhesive	M-K232	M-K222
Blue characters on white adhesive	M-K233	M-K223
Black characters on blue adhesive	M-K531	M-K521
Black characters on yellow adhesive	M-K631	M-K621

General description



Basic operations

• Turning on/off the P-touch

To turn the P-touch on or off, press . The P-touch conserves battery power by automatically switching itself off if no key is pressed within five minutes. When the batteries are low, the message "BATT" appears in the display. When the batteries are empty, the P-touch turns itself off and the display stays blank.

• Selecting the input mode

An indicator on the left side of the display shows the current input mode. If there is no indicator, lowercase letters can be typed in when a character key is pressed. If the indicator appears beside ABC, uppercase letters can be typed in, and if the indicator appears beside NUM, numerals will be typed in. To switch to the uppercase or lowercase input modes, press until the desired input mode is indicated. To enter the numerals input mode, press once. When the P-touch is turned on, the input mode is automatically reset to uppercase letters.

• Entering characters

To enter lowercase and uppercase letters, continue pressing the key for the desired letter until the letter is displayed, and then press , or . To enter numerals, press the key for the desired number.

If the input of a letter is not finalized, for example by pressing , or , the label cannot be printed, the text cannot be formatted or a symbol cannot be added.

The characters shown below are available with the various keys and input modes:

Key	Lowercase letters (no indicator)	Uppercase letters (indicator beside ABC)	Numerals (indicator beside NUM)
			1
	a b c ä å ä å ä å æ ç	A B C Ä Å Ä Å Ä Å Æ Ç	2
	d e f é ê ë è	D E F É Ê Ë È	3
	g h i î ï ï	G H I Î Ï Ï	4
	j k l	J K L	5
	m n o ñ ó ô õ ö ø œ	M N O Ñ Ó Ô Õ Ö Ø Æ	6
	p q r s	P Q R S	7
	t u v ú û ü	T U V Ú Û Ü	8
	w x y z ÿ	W X Y Z	9
	Space	Space	0

• Entering a space

To add a space to your text, make sure that the indicator does not appear beside NUM (numerals), and then press .

• Adding a second line of text

To end the first line of text and start the second, press . The marker appears to the left of the cursor. Two-line text is always printed with the SIZE1 text size and the NORM (normal) style.

To change a message back to a single line, delete the marker . (For details on deleting the marker, refer to *Deleting a character*.)

• Moving the cursor

You can move the cursor (|) to view or edit parts of the text to the left or right of the 6 characters shown in the display. To move the cursor to the left, press ; to move the cursor to the right, press . Move the cursor several characters in a row by holding down the key for the desired direction.

• Deleting a character

To delete a character, press . The character to the left of the cursor is deleted. To continue deleting characters, hold down until all of the desired characters are deleted. To delete a character in the middle of the text, move the cursor below the character to the right of the one to be deleted before pressing .

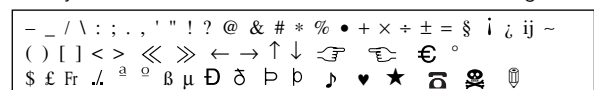
• Clearing all text and formats

To clear the current text and selected formats, press , press or until "CLEAR" is displayed, and then press . All text is erased, and the text size, style, underline/frame and label length return to their default settings, and the input mode is reset to uppercase letters.

• Entering a symbol

To enter a symbol, press . The first row of symbols appears. Continue pressing until the row containing the desired symbol is displayed, press or until the cursor is positioned under the desired symbol, and then press . Your text reappears in the display with the selected symbol added to it.

To return to the current text without adding a symbol, press . The symbols shown below are available in the following order:



• Printing

To print out the entered text, press . The message "PRINT" appears while printing.

Do not press the tape cutter button while printing, as this will cause the tape to jam.

• Cutting off labels

Cut off the label that is fed from the tape exit slot by pressing in the tape cutter button.

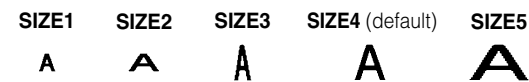
Formatting the text

To format the text by changing the text size or style, adding underlining/framing/shading or specifying the label length, press , press or until the desired function (SIZE, STYLE, FRAME or LENGTH) is displayed, and then press . Next, press , , or until the desired setting is displayed, and then press . The selected formatting is applied to the entire text. For more details about each function, refer to the appropriate section below.

To return to the current text without changing the formatting, press .

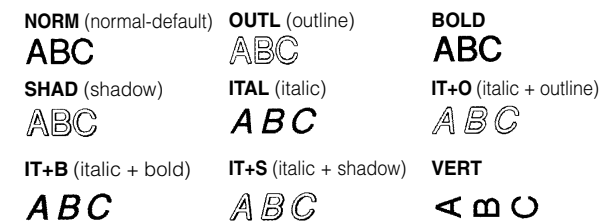
• Text size

The following five text sizes are available:



• Text style

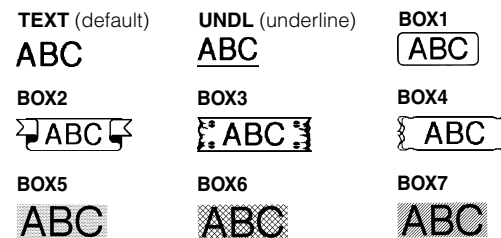
The following nine text styles are available:



When a text style other than NORM (normal) is selected, the indicator below comes on.

• Underlining/framing/shading

The following frame settings are available:



When UNDL is selected, the indicator below comes on. When a setting other than TEXT or UNDL is selected, the indicator below comes on. The underlining/framing/shading is not printed if the VERT (vertical) style is selected.

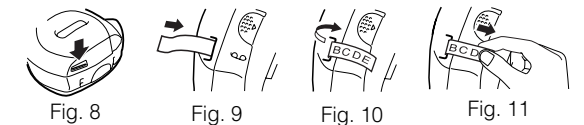
• Label length

If L OFF was selected, the length of the label will adjust automatically according to the length of the entered text. If L ON was selected, the current label length setting in millimetres appears. Press or or use the character keys to enter the desired length between 50 and 300 mm, and then press . When L ON is selected, the indicator below comes on.

Removing the label backing

The PT-55 is equipped with a peeler that allows you to easily remove the backing from labels. (Fig. 8)

- 1) Insert the label, with the printed surface facing down, as far as possible into the built-in peeler. (Fig. 9)
- 2) Fold back the label to the right 180°. (Fig. 10)
- 3) Quickly pull the label out to the right. The end of the backing is separated from the label. (Fig. 11)



Function key operations

Press , press or to select one of the following, and then press .

SIZE Press , , or to select a text size, and then press .

STYLE Press , , or to select one of the following, and then press .

- NORM (normal)
- SHAD (shadow)
- IT+B (italic + bold)
- OUTL (outline)
- ITAL (italic)
- IT+S (italic + shadow)
- BOLD
- IT+O (italic + outline)
- VERT (vertical)

FRAME Press , , or to select one of the following, and then press .

- TEXT
- BOX2
- BOX5
- UNDL (underline)
- BOX3
- BOX6
- BOX1
- BOX4
- BOX7

LENGTH Press , , or to select one of the following, and then press .

L OFF
L ON Press , , or or use the character key to enter the desired label length, and then press .

CLEAR (All text is erased, and the text size, style, underline/frame and label length return to their default settings, and the input mode is reset to uppercase letters.)

Free Manuals Download Website

<http://myh66.com>

<http://usermanuals.us>

<http://www.somanuals.com>

<http://www.4manuals.cc>

<http://www.manual-lib.com>

<http://www.404manual.com>

<http://www.luxmanual.com>

<http://aubethermostatmanual.com>

Golf course search by state

<http://golfingnear.com>

Email search by domain

<http://emailbydomain.com>

Auto manuals search

<http://auto.somanuals.com>

TV manuals search

<http://tv.somanuals.com>