



**MT2136 E & G SERIES
CONVEYOR OVEN
REPLACEMENT PARTS LIST**



EFFECTIVE SEPTEMBER 6, 2001

THE BLODGETT CORPORATION

50 Lakeside Avenue, Burlington, Vermont 05401 USA
Telephone: (802) 860-3700 (800) 331-5842 Fax: (802) 860-3732
www.blodgett.com

Superseding All Previous Parts Lists.

The Company reserves the right to make substitution in the event that items specified are not available.

ERRORS: Descriptive and/or typographic errors are subject to correction.

www.blodgett.com

IMPORTANT: When ordering parts, please provide the model, gas type and serial number of the oven. The identification plate is located on the left side of the combustion compartment and, also, above the control panel under the ledge.

MT2136 E & G

September 6, 2001

- ASAP Distributor Required Stocking Parts
- Doors Are Not Returnable

2

ELECTRICAL COMPONENTS

Ref. No.	Part No.	Description
	M2571	Element Assy., 208V, 3 PH, 15 KW (Qty 1)
	M2697	Element Assy., 208V, 1 PH, 15 KW (Qty 1)
	M2572	Element Assy., 240V, 3 PH, 15 KW (Qty 1)
	M2698	Element Assy., 240V, 1 PH, 15 KW (Qty 1)
	M6891	Element, Individual, 208V (Qty 6)
	M6892	Element, Individual, 220V (Qty 6)
	M6893	Element, Individual, 240V (Qty 6)
<input checked="" type="checkbox"/>	M1821	Fuse, 4 AMP, 300V, SC-4 (Qty 2)
<input checked="" type="checkbox"/>	M0158	Fuse Holder for SC-10 & SC-4 Fuses (Qty 2)
<input checked="" type="checkbox"/>	M0156	Fuse, 10 AMP, 250V, FMN-10 Blowers ZA
	M0702	Fuse Block for FMN-10 Fuse Blowers ZA
<input checked="" type="checkbox"/>	M3389	Fuse, 4 AMP, Ceramic, MDA-4 Computerized Ovens (Need screw driver to remove)
<input checked="" type="checkbox"/>	M3390	Fuse Holder, 20 AMP for MDA-4 Fuse Computerized Ovens
<input checked="" type="checkbox"/>	M2453	Snap Disc, L140-20F, 3 Pole SPDT (Blower Compartment)
<input checked="" type="checkbox"/>	M1362	Snap Disc, L140-20F, 2 Pole SPST (Control Compartment)
<input checked="" type="checkbox"/>	M0635	Snap Disc, F110-20F, 2 Pole SPST (Control Compartment-ZA version only)
<input checked="" type="checkbox"/>	M2734	Snap Disc, L165-30F, 2 Pole SPST (Control Compartment-ZA version only)
	M0593	Terminal Block, 2 Pole (Neutrals) w/ Push On Terminals
	M3714	Terminal Block, 3 Pole (Power) MT2136E w/Allen Head Screws
	5281	Terminal Block, 90 AMP, 3 Pole
	R0164	Terminal Block, Power
	R0166	Terminal Block, Ground
	R1580	End Stop, for Terminal Block
<input checked="" type="checkbox"/>	M0708	Contactactor, Mechanical, 16 AMP, 3 Pole, 120V Coil (Blowers)
	M2483	Contactactor, Mercury, 60 AMP, 3 Pole, 120V Coil (Heat) 3PH
	M2720	Contactactor, Mercury, 100 AMP, 2 Pole, 120V Coil (Heat) 1PH
	M7170	Transformer, 208/460V to 120V
<input checked="" type="checkbox"/>	M2469	Fan, Axial 110 CFM 4-1/2" (Qty 3) or (AB Qty 4)
	M0571	Guard & Hardware, Fan (Qty 3) or (AB Qty 4)
	M0572	Cord Set, Axial Fan (Qty 3) or (AB Qty 4)
<input checked="" type="checkbox"/>	M0152	Selector Switch, Heat & Conveyor
<input checked="" type="checkbox"/>	M0153	Selector Switch, Blower
<input checked="" type="checkbox"/>	M0151	Knob, Selector Switch (Heat/Conveyor/Blower)
	M1694	Cord Set & Plug Assy., 10 Foot
	M0772	Receptacle, Twist Lock
	4168	Lug, Grounding

TEMPERATURE CONTROLS

SOLID STATE CONTROLS (MANUAL) FOR OVENS
MANUFACTURED BEFORE MID SEPT., 1993

2 DIGITAL DISPLAYS

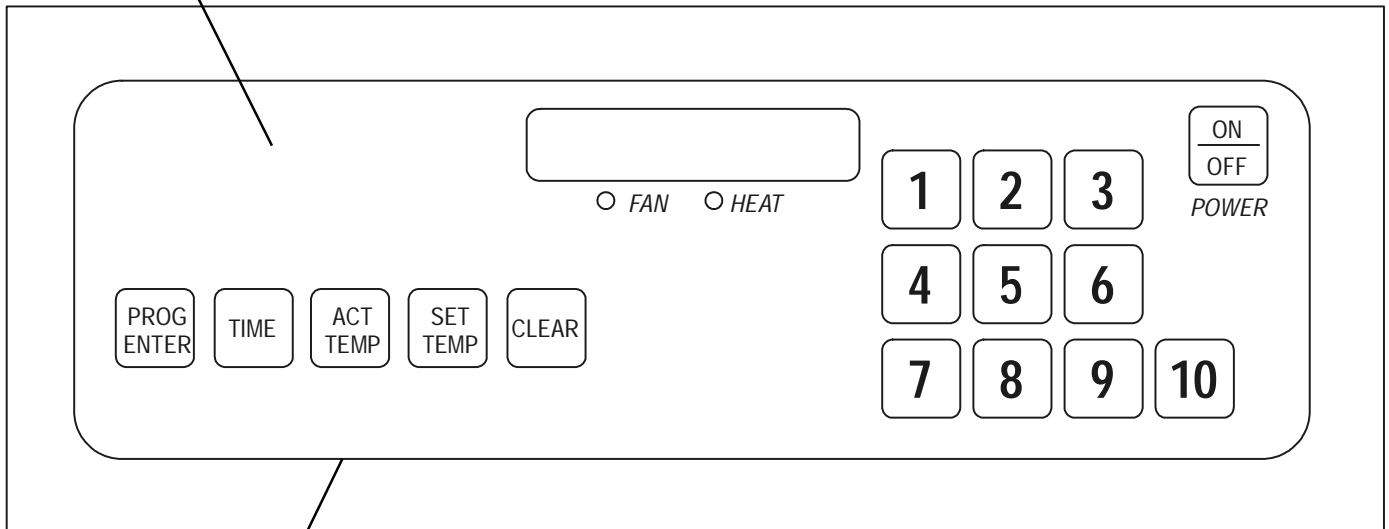
Ref. No.	Part No.	Description
<input checked="" type="checkbox"/>	M3146	Time Display, Digital
<input checked="" type="checkbox"/>	M3149	Controller, Digital Temperature
<input checked="" type="checkbox"/>	M3439	Relay, Digital Temp. Controller (UE Control)
<input checked="" type="checkbox"/>	M3150	Control Board, Temperature Hi-Lo Limit
<input checked="" type="checkbox"/>	M3151	Thermocouple, Dual Lead
<input checked="" type="checkbox"/>	M8524	Filter, Capacitor

CONTROL PANEL OPTION COMPUTER CONTROLS SB DOMESTIC FOR MT2136

TEMPERATURE CONTROLS

COMPUTER SOLID STATE CONTROLS FOR OVENS MANUFACTURED AFTER MID SEPT., 1993

22 M3175 Decal Only, SB OR M10049 Decal & Control Membrane, SB



PART #M6474

SB=SINGLE BELT

TB=TWIN BELT

8
 M6474
 Computer Control Kit,
 Complete
 (Does not include cover)

Ref. No.	Part No.	<u>Description</u>	Ref. No.	Part No.	<u>Description</u>
8	<input checked="" type="checkbox"/> M6474	Computer Control Kit, Closed Loop SB		M5661	Bracket Assy., Cable Clamp
	FW525	Computer Control Kit, Closed Loop SB, Recon.		22672	Relay, Control (Ice Cube) (Qty 4)
	M10049	Decal & Control Membrane SB (for M6474/FW525)		<input checked="" type="checkbox"/> 36066	Thermostat, High Limit (Manual Reset)
22	M3175	Lexan Decal only, SB		<input checked="" type="checkbox"/> M0152	Contact, Emergency Stop Switch Activator, Emergency Stop Switch (Mushroom Shape)
	M9692	DAC Board, SB (for M6474)		M3297	Nameplate, Emergency Stop
21	M10197	Remote Mounting Support Kit, for Computer (sgl, dbl, & tpl ovens) Replaces M3314		M3136	Breaker, 7 AMP Circuit (Qty 2)
	M0984	Pick-Up, PV2		<input checked="" type="checkbox"/> M2772	Breaker, 4 AMP Circuit (Qty 2)
	M5635	Computer Control Kit, Open Loop TB		<input checked="" type="checkbox"/> M3352	Transformer, 120V to 24V (Qty 1)
	M10034	Decal & Control Membrane TB (for M5635)		<input checked="" type="checkbox"/> M3349	Harness, w/socket, Inter-Connecting DC Drive, 3 Wire, 9 Pin (Qty 1)
	M4400	Lexan Decal only, TB		<input checked="" type="checkbox"/> M7237	Harness, w/socket, Relay Board, 25 Pin (Qty 1)
	M7427	Probe, Temperature RTD, 500 OHMS		<input checked="" type="checkbox"/> M9985	Relay Harness & Jack Screw Kit, 25 pin
	<input checked="" type="checkbox"/> M10035	Silicone Compound (for cables)			
	M3347	Cable, Computer Control, 25 Pin, 10 Foot			
	<input checked="" type="checkbox"/> M3348	Cable, Computer Control, 9 Pin, 10 Foot			
	<input checked="" type="checkbox"/> M9262	Jack Screw (for harness mounts)			
	M3490	Cable, Computer Control, 25 Pin, 50 Foot			
	M3491	Cable, Computer Control, 9 Pin, 50 Foot			

CONVEYOR COMPONENTS

SB=SINGLE BELT TB=TWIN BELT

Ref. No.	Part No.	Description
<input checked="" type="checkbox"/>	FW502	Speed Control Board, Bodine Recond.
NOTE: M2379 is no longer available		
<input checked="" type="checkbox"/>	M10099	Conveyor Motor & Control Kit, Brushless (for Computerized Ovens) *See Note
<input checked="" type="checkbox"/>	M10246	Conveyor Motor & Control Kit, Brushless (for Non-Computerized Ovens) *See Note
<input checked="" type="checkbox"/>	M10081	Conveyor Control, Brushless *See Note
<input checked="" type="checkbox"/>	M10082	Conveyor Motor, Brushless *See Note
NOTE: You must install the Brushless Kit BEFORE you purchase the new brushless motor or control separately.		
	M6192	Bracket, Motor Support (for M10082)
<input checked="" type="checkbox"/>	M3145	Potentiometer, Bodine, 10K
<input checked="" type="checkbox"/>	M9787	Fuse, Armature, 250 MA, 250V (Qty 1) (Replaces M2316, DOMESTIC ONLY)
<input checked="" type="checkbox"/>	M2254	Fuse, Line, Bodine Board, 5 AMP, 250V (Qty 1)
	M5770	Conversion Kit, Micro-Drive
	M7202	Conversion Kit, Open Loop to Closed Loop (Computerized)
	M0984	Pick-Up, PV-2 (For M6474 or M8677)
	M3147	Pick-Up, PV-10 (For M3146)
	M0200	Lock, Speed Control Potentiometer
	M0201	Dial, Speed Control Potentiometer
	21169	Knob, Speed Control Potentiometer
	M2500	Brush Set, Bodine
	M2738	Chain, Drive, 16"
	M0391	Chain, Drive, 1.92 ft. (FAZOLI'S ONLY)
<input checked="" type="checkbox"/>	M0112	Masterlink, Drive Chain
18	<input checked="" type="checkbox"/> M2740	Belt, Wire S/S 21" SB (Per Foot) (Total 11 FT)
18	M6336	Belt, Wire S/S 10" TB (Per Foot) (Total 21 FT)
18	<input checked="" type="checkbox"/> M5289	Belt, Wire S/S 12" (Total 11 FT)
	<input checked="" type="checkbox"/> M5260	Belt, Wire S/S 8" (Total 11 FT)
	M2388	Tensioner Assy, Belt (Spring, Sleeve & Shaft Assy)
2	M2011	Conveyor Assy, Drive Side SB
5	M2012	Conveyor Assy, Idle Side SB
	M2207	Conveyor Assy, Drive Side TB
	M2208	Conveyor Assy, Idle Side TB
<input checked="" type="checkbox"/>	M0109	Sprocket, Motor Drive, 12 Tooth SB/TB
<input checked="" type="checkbox"/>	M0108	Sprocket, Conveyor Belt, 11 Tooth SB/TB (Bore Diameter 3/4") (Qty 1)
<input checked="" type="checkbox"/>	M0110	Sprocket, Conveyor Drive, 15 Tooth SB/TB (Bore Diameter 3/4")
	M1865	Sprocket, Conveyor Drive, 15 Tooth TB (Bore Diameter 1/2")
	M3441	Sprocket, 19 Tooth
	M0122	Bearing, Rulon for Conveyor Drive
	M9216	Speed Up Kit, 22 Tooth, Fazoli's

GAS BURNER COMPONENTS

Ref. No.	Part No.	Description
<input checked="" type="checkbox"/>	20287	Valve, Sgl Solenoid 110/120V
	M0282	Valve, Manual Gas
<input checked="" type="checkbox"/>	M0767	Blower Motor, Combustion w/ Control Box
<input checked="" type="checkbox"/>	M2383	Blower Motor, Combustion
<input checked="" type="checkbox"/>	M2381	Transformer, 120V to 24V
<input checked="" type="checkbox"/>	M2385	Relay, Time Delay
<input checked="" type="checkbox"/>	M6397	Pilot Burner & Ignitor Assy, Nat
	M6398	Pilot Burner & Ignitor Assy, LP
	M0248	Tube, Pilot Aluminum 1/4"
	M10076	Burner Assy, Complete Nat
	M10078	Burner Assy, Complete LP
<input checked="" type="checkbox"/>	M0415	Flame Sensor
	M0697	Orifice, Pilot Nat
	M2690	Orifice, Pilot LP
	M3203	Orifice, Main Burner, Nat (MTD 29)
	M1491	Orifice, Main Burner, LP (MTD 45)
	M2140	Flame Tube Assy
<input checked="" type="checkbox"/>	M1054	Spark Box, 24V
	M0595	Air Pressure Switch (All gas ovens)
<input checked="" type="checkbox"/>	M5495	Dual Solenoid/Pres Reg Nat 24V
<input checked="" type="checkbox"/>	22190	Dual Solenoid/Pres Reg LP 24V
	M3434	Conversion Kit, Nat to LP (MTD 45)
	M3435	Conversion Kit, LP to Nat (MTD 29)
	18612	Spring, Solenoid Valve, Nat to LP
	23007	Spring, Solenoid Valve, LP to Nat
	M0279	Union, 1/2 Inch Black
	1949	Nipple, Pipe 1/2 x 1-3/16 Close
	M0590	Nipple, Pipe 1/2 x 2-1/2
	M0317	Elbow, 1/2 Inch Street 90°
	597	Ell, Black 90°
	17874	Ell, Black 1/2 x 3/4

CONVECTION COMPONENTS

Ref. No.	Part No.	Description
<input checked="" type="checkbox"/>	M2871	Motor & Blower Assy., 60 HZ, CW (Qty 1)
<input checked="" type="checkbox"/>	M2870	Motor & Blower Assy., 60 HZ, CCW (Qty 1)
9	M2100	Nozzle Assy (Aluminum) (Qty 5)
	M5288	Nozzle Assy, AB Version (S/S) (Qty 5)
	M5302	Nozzle Assy, AB Version (Aluminum) (Qty 5)
	M2741	Plate Assy, Air (LH & RH)
11	M7490	Air Plate, LH (R-L)
12	M7493	Air Plate, RH (R-L)
	M7492	Block Off, used with M7490 & M7493
	M3125	Upgrade Kit, Cooling Fan (Domestic)
	M7503	Plate Assy, Air LH (L-R) Bottom
	M7502	Plate Assy, Air RH (L-R) Bottom Fazoli's Only
	M7501	Plate Assy, Air LH (L-R) Bottom Fazoli's Only
	M7507	Plate Assy, Air RH (R-L) Bottom Fazoli's Only
	M7505	Plate Assy, Air RH (L-R) Top & Middle Fazoli's Only
	M7508	Plate Assy, Air LH (R-L) Top & Middle Fazoli's Only
	M10528	Plate Assy, Air LH (L-R) Papa Johns Only
	M9645	Plate Assy, Air RH (L-R) Papa Johns Only
	M7217	Plate Assy, Air LH (R-L) Papa Johns Only
	M10529	Plate Assy, Air RH (R-L) Papa Johns Only
	M10447	Block Off, used with M10528 & M10529

NOTE: No Block Offs are used with M9445 & M7217

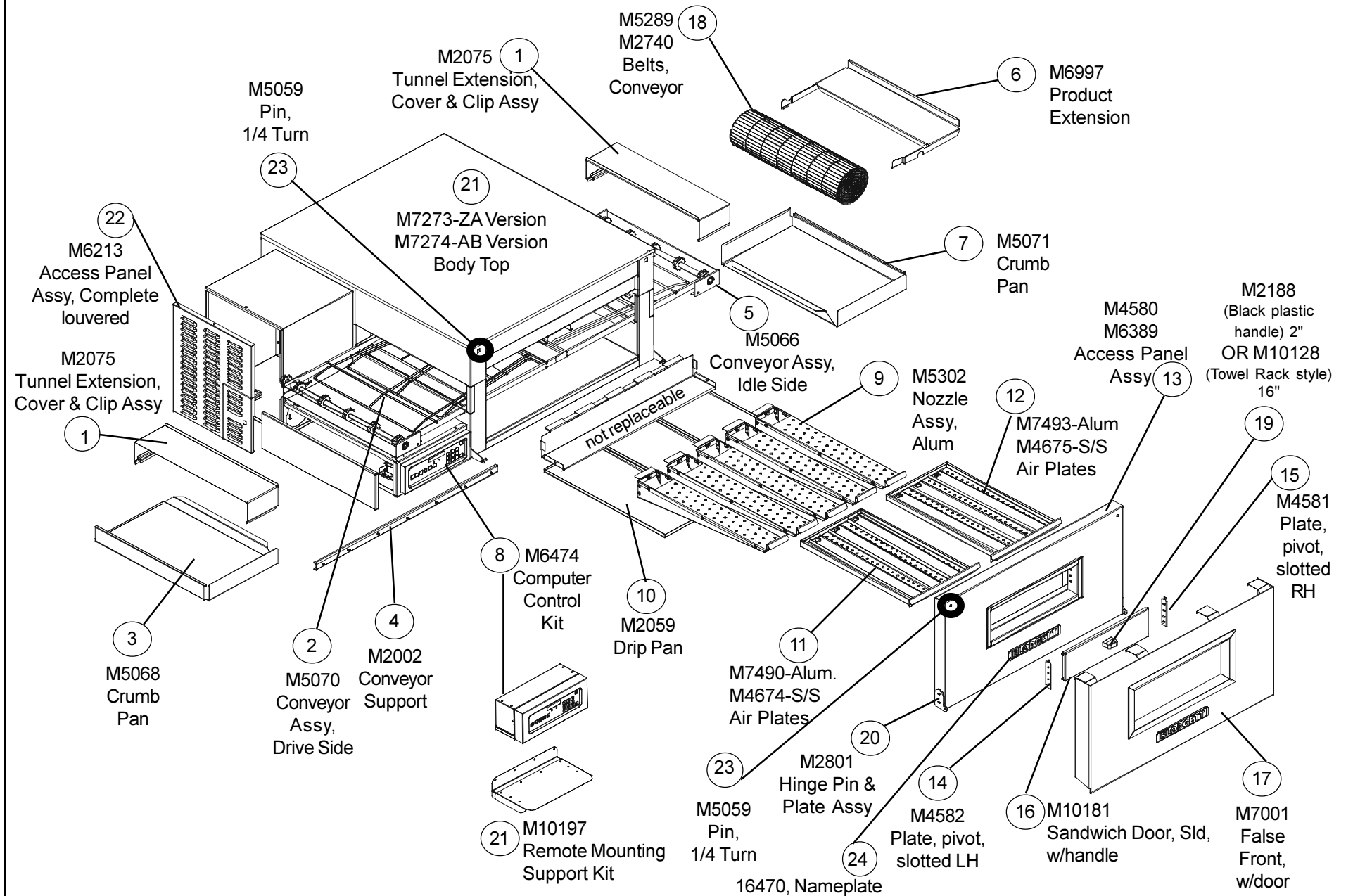
**EXCLUSIVE TO VERSION AB
(SERIAL NUMBER MODEL IDENTIFICATION
CODE OF BK = MT2136G, OR FB = MT2136E)**

Ref. No.	Part No.	Description
8	M6474 M9932	Computer, Closed Loop Kit, Integral to Remote Computer Conversion
2	M5070	Conveyor Assy, Drive Side SB
5	M5066 M5069 M5067	Conveyor Assy, Idle Side SB Conveyor Assy, Drive Side TB Conveyor Assy, Idle Side TB
4	M2002	Conveyor Support, S/S (Qty 2, Bars)
	<input checked="" type="checkbox"/> M6044	Snap Disc, L110-20F, 3 Pole
	M7000	False Front w/o Door
17	M7001 M9110	False Front w/ Door Access Panel, Combustion Compartment
22	M6213 M6035	Access Panel, louvered, Control Box Latch, Combustion Compartment Access Panel AND Sandwich Door
13	M4580	Access Panel, Entire Front (Has opening for Sandwich Door)
13	M6389	Access Panel, Entire Front, Solid (Has no opening for Sandwich Door)
	M9217	Access Panel Conversion Kit (To add a Glass Sandwich Door)
	M6970	Access Panel Conversion Kit (To add a Solid Sandwich Door)
16	M10181	Sandwich Door Assy, 17"x 5", Solid w/handle Replaces M4587
16	M10243	Sandwich Door Assy, 17"x 5", Glass w/ handle Replaces M9237
<p>NOTE: For ALL ovens, if you need a new sandwich door order part M10181, Solid Door Assy, or part M10243, Glass Door Assy.</p>		
19	M10128	Handle Kit, 16 1/2" For M10181 & M10243 For ovens after 12/05/00, or converted units with 16 1/2" handle
	M2188	Handle Assy, black plastic, for Sandwich Door, 2" Handle For ovens before 12/05/00
15	M4581	Plate, Pivot RH Slotted
14	M4582	Plate, Pivot LH Slotted
	M2733	Screw, Front Access Panel
23	M5059 M5060 M5061 M9780	1/4 Turn Bolt Snap-in Receptacle Retainer, Push-On 1/4 Turn Door Bolt Kit (Includes 1 each of M5059, M5060, M5061)
	M9768	Gasket Assy., Front Access Panel (Replaces M2599 & M3420)
20	M2801 16470	Hinge Pin & Plate Assy. Nameplate, Blodgett 10"

**EXCLUSIVE TO VERSION AB
(SERIAL NUMBER MODEL IDENTIFICATION
CODE OF BK = MT2136G, OR FB = MT2136E)**

Ref. No.	Part No.	Description
	M7274	Body Top w/ Hardware
	M6220	Body Back
	21390	Legs, 17-1/4" w/ Casters (Dbl Oven)
	21391	Legs, 23-1/4" w/ Casters (Sgl Oven)
	M7887	Pin, Stacking (Set of 4)
	M9484	Stacking Kit, AB/AB Integral Controls
	M9485	Stacking Kit, AB/AB Remote Controls
	22067	Triple Plate w/ Casters
<p>Note: MT2136 AB version is only available with legs (Part #'s 21390 & 21391). There is no stand option.</p>		
10	M2059	Drip Pan
7	M5071	Crumb Pan, Idle (Remote & Integral) (Bottom Section)
3	M5335	Crumb Pan, Drive w/ Remote (Bottom Section)
	M6996	Crumb Pan, Idle (Remote & Integral) (Top & Middle Section - Vented)
	M6995	Crumb Pan, Drive w/ Remote (Top & Middle Section - Vented)
3	M5068	Crumb Pan, Drive w/ Integral (All Sections)
	M7002	Extension Assy, Product 6"
6	M6997	Extension Assy, Product 12"
9	M5302	Nozzle Assy (Aluminized) (Qty 5) Extruded
	M5288	Nozzle Assy (S/S) (Qty 5) Extruded
	M2741	Plate Assy, Air (LH & RH)
11	M7490	Air Plate, LH
12	M7493	Air Plate, RH
11	M4674	Air Plate, LH (S/S)
12	M4675	Air Plate, RH (S/S)
	M4163	Plate Assy, Block Off
	M4673	Plate Assy, Block Off (S/S)

MT2136 AB VERSION



EXTERIOR COMPONENTS

<u>Ref. No.</u>	<u>Part No.</u>	<u>Description</u>
	M2085	Decal, Control Panel, SB, Red
	M2087	Decal, Control Panel, TB, Red
7	M4306	Crumb Pan, Idle (Remote & Integral)
3	M4372	Crumb Pan, Drive w/ Remote
	M4305	Crumb Pan, Drive w/ Integral
	M4309	Stop, Product
6	M7002	Extension Assy., Product 6"
	M6997	Extension Assy., Product 12"
	M2059	Drip Pan (Aluminized)
	M5008	Drip Pan (S/S)
	M2450	Access Panel, Combustion Compartment (Manual)
	M3376	Access Panel, Combustion Compartment (Computer Controls)
	M3553	Access Panel, Control Box (Integral)
13	M6389	Access Panel, Entire Front, Solid (Has no opening for Sandwich Door)
13	M4580	Access Panel, Entire Front (Has opening for Sandwich Door)
	M6970	Access Panel Conversion Kit (To add a Solid Sandwich Door)
	M9217	Access Panel Conversion Kit (To add a Glass Sandwich Door)
	M10181	Sandwich Door Assy, 17"x 5", Solid w/handle Replaces M4587
	M10243	Sandwich Door Assy, 17"x 5", Glass w/handle Replaces M9237
<p>NOTE: For ALL ovens, if you need a new sandwich door order part M10181, Door Assy, Sandwich Solid w/handle or part M10243, Door Assy, Sandwich Glass w/handle.</p>		
	M10128	Handle Kit, 16 1/2" For M10181 & M10243 For ovens after 12/05/00 or converted units with 16 1/2" handle
	M2188	Handle Assy, black plastic, for Sandwich Door 2" Handle For ovens before 12/05/00
<p>NOTE: To convert from 2" to 16 1/2" Handle, you must purchase complete Sandwich Door Assy M10181 or M10243.</p>		
	M6035	Latch, Sandwich Door
	M4581	Plate, Pivot RH Slotted
	M4582	Plate, Pivot LH Slotted
	M2514	Bolt, Front Access Panel (Allen Head Decoration)
	M2515	Allen Key for M2514
	M9768	Gasket Assy, Front Access Panel (Replaces M2599 & M3420)
	M2801	Hinge Pin & Plate Assy.
	16470	Nameplate, Blodgett 10"
	21826	Installation Hose, 36"
	21242	Installation Hose, 48"

EXTERIOR COMPONENTS-CONT'D.

<u>Ref. No.</u>	<u>Part No.</u>	<u>Description</u>
21	M7273	Body Top w/ Hardware
	M2678	Body Back
	M2532	Triple Stacking Base w/ Casters
	M9106	Pin, Stacking (Set of 4)
	M2439	Stand, 24" w/Caster Assy.
	M9481	Stacking Kit, ZA/ZA Manual Controls
	M9482	Stacking Kit, ZA/ZA Integral Controls
	M9483	Stacking Kit, AA/AA Remote Controls
	M9486	Stacking Kit, AB/ZA or AA Integral Controls
	M9487	Stacking Kit, AB/ZA or AA Remote Controls
	M6846	Chimney Kit, Sgl
	M6847	Chimney Kit, Dbl
	M6848	Chimney Kit, Tpl
	M3998	Heat Shield Kit
1	M2075	Tunnel Extension Cover & Clip Assy.
	M9932	Kit, Integral to Remote Mount, Computer Conversion

**EXCLUSIVE TO EXPORT 50 HZ
(ZA VERSION)**

<u>Ref. No.</u>	<u>Part No.</u>	<u>Description</u>
	M10071	Burner Assy, Complete Nat CE
	M10073	Burner Assy, Complete LP CE
	M10076	Burner Assy, Complete Nat Gen Exp
	M10078	Burner Assy, Complete LP Gen Exp
<p>NOTE: <i>For general export ovens, use domestic burners.</i></p>		
	M10067	Pilot Burner & Ignitor Assy, Nat CE
	M10066	Pilot Burner & Ignitor Assy, LP CE
	M3168	Spark Box, 240V (Landis & Gyr) CE
	M2549	Strip, Terminal (used w/spark box) CE (Plugs on M3168)
	M6449	Noise Filter (G&E)
	M6448	Noise Filter (E Only)
	M8784	Suppression Harness CE
	M2384	Transformer, 240V (Burner Assy.)
	M3295	Thermostat, High Limit, (Man Reset)
	M2386	Motor, Combustion Blower
	M2873	Motor & Blower Assy., 50 HZ, CW
	M2872	Motor & Blower Assy., 50 HZ, CCW
	M3128	Motor, Conveyor Drive, 180VDC
	M2573	Element Assy., 220/380V, 3 PH, 15 KW
	M2699	Element Assy., 220/380V, 1 PH, 15 KW
	M2574	Element Assy., 240/415V, 3 PH, 15 KW
	M2698	Element Assy., 240/415V, 1 PH, 15 KW
<input checked="" type="checkbox"/>	M6892	Element, Individual, 220/380V
	M6893	Element, Individual, 240/415V
<input checked="" type="checkbox"/>	23034	Axial Fan, 230V (Qty 3)
	M3126	Upgrade Kit, Cooling Fan (Export)
	M2247	Contacto, Mechanical, 16 AMP, 3 Pole, 250V (Motor) 50 HZ
	R1530	Contacto, Mercury, 60 AMP, 3 Pole (Heat)
	M2591	Contacto, Mercury, 100 AMP, 1 Pole (Heat)
	M7170	Transformer, 208/460-120V, 300VA (Step Down)
	M3295	Thermostat, High Limit, (Man Reset) CE
	90250	Relay, 240V 3PDT CE
	16775	Relay, 240V SPST, 30 AMP CE
	M7282	Relay Board (All Computerized Ovens) CE
	M6024	Transformer (for M7282) CE
	M8704	Fuse, 250V 125MA (For M7282) (Qty 1) (Replaces M8652) CE
	M3166	Fuse, 4 Amp., Ceramic 250V CE
	M3167	Fuse Holder CE
	M2630	Fuse, Bodine Speed Control, 5 AMP, 250V (Qty 1) CE
	M2316	Fuse, Armature, 200MA, 250V (Qty 1) CE
<input checked="" type="checkbox"/>	R0164	Terminal Block, Power CE
	R1580	End Stop, Terminal Block (Qty 1) used w/R0164
	R0166	Terminal Block, Ground CE
	M3172	Timer, Fixed, 2 Second CE
	M3173	Timer, Fixed, 10 Second CE

**EXCLUSIVE TO EXPORT 50 HZ
(ZA VERSION) - Cont'd**

<u>Ref. No.</u>	<u>Part No.</u>	<u>Description</u>
	16037	Indicator Light, 250V, Red, Round CE & Australia
	M10064	Wiring Harness, Elec. Ovens ONLY CE
	M10039	Wiring Harness, Gas Ovens ONLY CE
	M3155	Controller, Digital Temp. CE
	M7880	Computer Control Kit, Closed Loop SB CE
	M8524	Filter Capacitor (Manual Controls Only)
	M3154	Time Display, Digital 50 HZ
	M10544	Reset Switch Kit, Pushbutton CE Replaces M2497 & M2498
	M0595	Air Pressure Switch
	M9978	Conversion Kit, Air Pressure Differential Switch (Replaces M3330 & M2819) CE
	M9422	Air Pressure Differential Switch, switch only CE
	M9705	Polyurethane Tubing (Per Foot, Total 3 FT) used w/pressure switch CE
	M2245	Solenoid Valve, Sgl (Manual Controls ONLY)
	M9182	Combination Gas Valve CE & Export (Replaces M6117) After 10/8/97
	M6000	Combination Gas Valve Nat 50HZ Before 10/8/97
	M6001	Combination Gas Valve LP 50HZ Before 10/8/97
	17874	Ell, Black 1/2" x 3/4" CE
	4588	Nipple, Pipe 3/4" x 1-3/8" (Qty 2) CE
	R3378	Tee, 1/2" x 1/2" x 1/2" CE
	R5347	Nipple, 1/2" x 3" CE
	M8690	Bushing, Hex 1/2" x 1/8" CE
	1949	Nipple, 1/2" x Close CE
	M3407	Spring, NAT to LP Conversion
	M9753	Gas Conversion Kit, Nat to But/LP CE
	M9767	Gas Conversion Kit, But/LP to Nat CE
	M8690	Orifice, bushing (for M9182) CE
	M8782	Cover, Athena Control CE
	M8744	17 1/4" Leg/Caster Kit CE
	M8745	23 1/4" Leg/Caster Kit CE
9	M2100	Nozzle Assy (Aluminum) (Qty 5)

**EXCLUSIVE TO EXPORT 60 HZ
(AB VERSION)**

<u>Ref. No.</u>	<u>Part No.</u>	<u>Description</u>
	M6122	Transformer 220/110V

**EXCLUSIVE TO EXPORT 50 HZ
(AB VERSION)**

<u>Ref. No.</u>	<u>Part No.</u>	<u>Description</u>
	M0158	Fuseholder NON-CE
	20162	Fuse NON-CE

Free Manuals Download Website

<http://myh66.com>

<http://usermanuals.us>

<http://www.somanuals.com>

<http://www.4manuals.cc>

<http://www.manual-lib.com>

<http://www.404manual.com>

<http://www.luxmanual.com>

<http://aubethermostatmanual.com>

Golf course search by state

<http://golfingnear.com>

Email search by domain

<http://emailbydomain.com>

Auto manuals search

<http://auto.somanuals.com>

TV manuals search

<http://tv.somanuals.com>