

USER'S MANUAL

BF-816 USB to Serial 2 Port

1. Introduction

Congratulations on your purchase of the BF-816 USB to Serial 2 Port. This device provides bridging between the Universal Serial Bus (USB) input and two enhanced UART ports. This device contains all the necessary logic to communicate with the host computer via the USB bus.

2. Package Content

Hardware:

- BF-816 USB to Serial 2 Port

Software:

- Driver software

3. Product Features

- USB Specification 1.1 compliant
- Supports up to 920Kbps data rate
- Dual Serial Ports
- Supports 8,7,6 & 5 Data widths
- Supports Even, Odd, Mark, Space & None Parities
- Supports 1, 1.5 and 2 stop bits

4. System Requirements

PC

- IBM PC 486DX4-100 MHz or higher or compatible system
- Available USB port
- CD-ROM drive
- Windows® 98, Windows® ME, Windows® 2000, Windows® XP, Windows® CE

MAC

- Power G3, G4, or I-Mac
- Available USB port
- CD-ROM drive
- Mac OS 10.2 & 10.3 & 10.4

5. Driver Installation

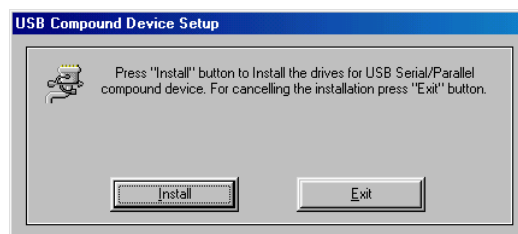
5.1 Windows® 98SE & ME & 2000 Installation

NOTICE: Before you install the driver to your computer, please do not connect the BF-816 USB to Serial 2 Port to your computer.

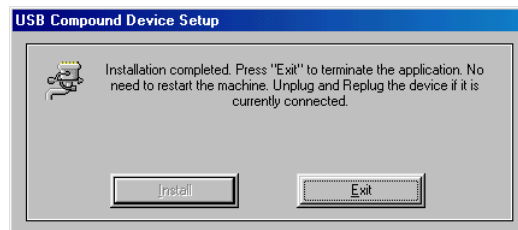
5.1.1 Turn on the power of computer and make sure the USB port is enabled and can working properly.

5.1.2 Insert the driver of BF-816 USB to Serial 2 Port into CD-ROM drive. Select “Install Products - BF-816 USB to Serial 2 Port - Install”.

5.1.3 Click the “**Install**” to continue.



5.1.4 Click “**Exit**” to end this installation.

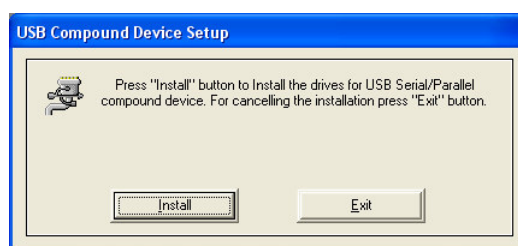


5.1.5 Plug the BF-816 USB to Serial 2 Port into USB Port of PC. Windows® will detect an USB Device. Your new hardware is installed and ready to use.

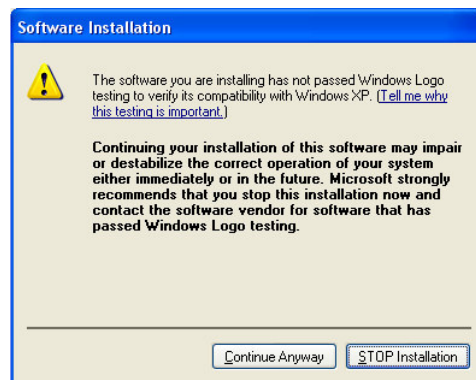
5.2 Windows® XP Installation

NOTICE: Before you install the driver to your computer, please do not connect the BF-816 USB to Serial 2 Port to your computer.

- 5.2.1 Turn on the power of computer and make sure the USB port is enabled and can working properly.
- 5.2.2 Insert the driver of BF-816 USB to Serial 2 Port into CD-ROM drive. Select “Install Products - BF-816 USB to Serial 2 Port - Install”.
- 5.2.3 Click the “**Install**” to continue.



- 5.2.4 When the windows appear as below, click “**Continue Anyway**” to install the driver.



- 5.2.5 When the windows appear as below, click “**Continue Anyway**” to install the driver.



5.2.6 Click **“Exit”** to end this installation.



5.2.7 Plug the BF-816 USB to Serial 2 Port into USB Port of PC. Windows® will detect an USB Device.

5.2.8 Select **“Install the software automatically (recommended)”**, then click **“Next”** to continue.



5.2.9 When the windows appear as below, click **“Continue Anyway”** to install the driver.



5.2.10 Click **“Finish”** to end of Hardware Update Wizard.



5.2.11 Select **“Install the software automatically (recommended)”**, then click **“Next”** to continue.



5.2.12 When the windows appear as below, click **“Continue Anyway”** to install the driver.



5.2.13 Click **“Finish”** to end of Hardware Update Wizard.



5.2.14 Select **“Install the software automatically (recommended)”**, then click **“Next”** to continue.



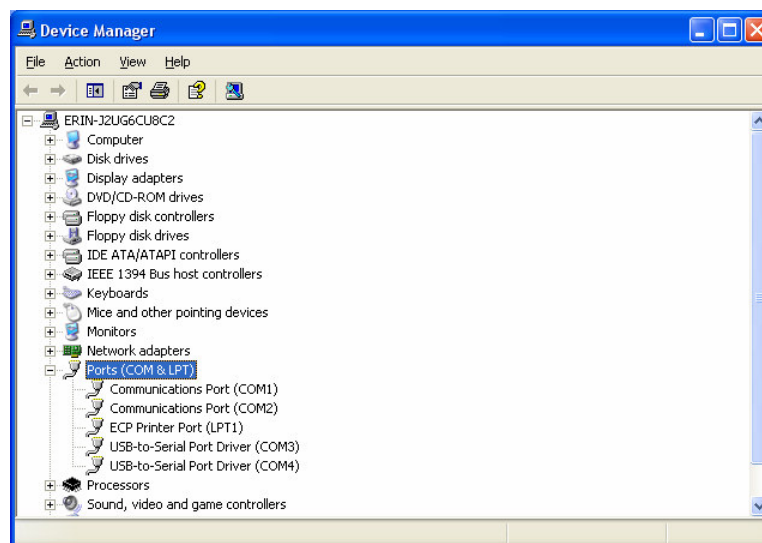
5.2.15 When the windows appear as below, click **“Continue Anyway”** to install the driver.



5.2.16 Click **“Finish”** to end of Hardware Update Wizard.



5.2.17 Your new hardware is installed and ready to use. You will see some information on the “Device Manager”. USB Compound Device · USB -to-Serial Port Driver(COM3) USB -to-Serial Port Driver(COM4)



5.3 MAC Installation

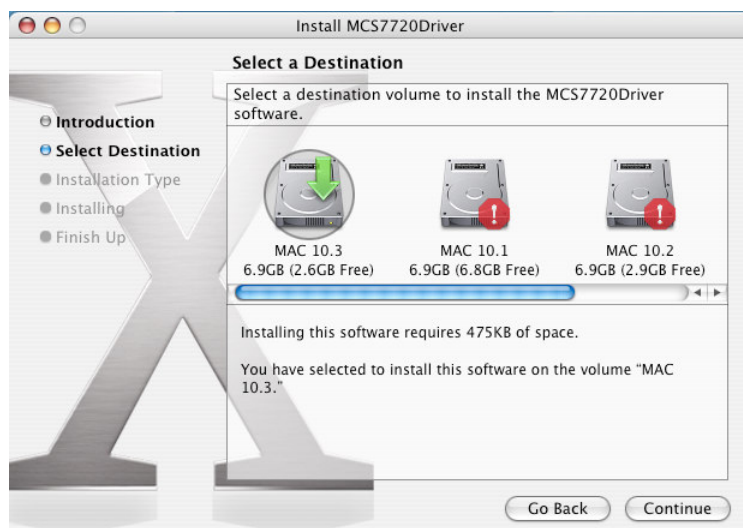
NOTICE: Before you install the driver to your MAC, please do not connect the BF-816 USB to Serial 2 Port to the MAC.

5.3.1 Power on your MAC and make sure that USB port is enabled and working properly. Put the driver CD into the CD-ROM and run the driver of MAC.

5.3.2 Select the driver you want to install the package and click “**Continue**” to install.



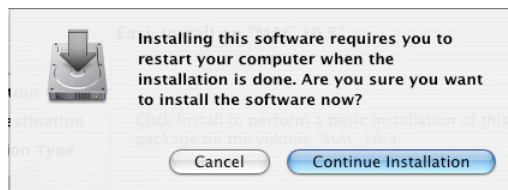
5.3.3 Select hard disk to install, click “**Continue**”.



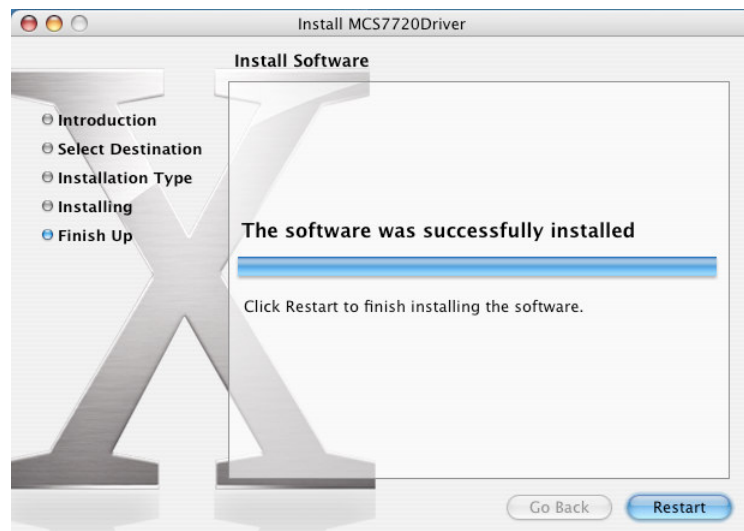
5.3.4 Click “**Install**” to continue.



5.3.5 Select “**Continue Installation**” to continue.

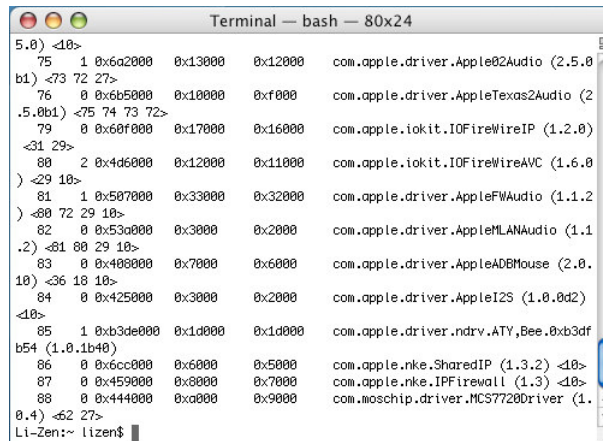


5.3.6 Select “**Restart**” will reboot your system.



5.3.7 Now connect the BF-816 USB to Serial 2 Port device to USB port.

-
- 5.3.8 Check whether the driver is loaded by typing “**kextstat**” at terminal (Console). You will see “**com.moschip.driver.moschipusbethernet.kext**” in loaded driver if it is successfully loaded.



```
Terminal — bash — 80x24
5.0) <18>
75 1 0x6a2000 0x13000 0x12000 com.apple.driver.Apple02Audio (2.5.0
b1) <73 72 27>
76 0 0x6b5000 0x18000 0xf000 com.apple.driver.AppleTexas2Audio (2
.5.0b1) <75 74 73 72>
79 0 0x60f000 0x17000 0x16000 com.apple.iokit.IOFireWireIP (1.2.0)
<31 29>
80 2 0x4d6000 0x12000 0x11000 com.apple.iokit.IOFireWireAVC (1.6.0
) <29 18>
81 1 0x507000 0x33000 0x32000 com.apple.driver.AppleFWAudio (1.1.2
) <80 72 29 18>
82 0 0x53a000 0x3000 0x2000 com.apple.driver.AppleMLANAudio (1.1
.2) <81 80 29 18>
83 0 0x408000 0x7000 0x6000 com.apple.driver.AppleADBMouse (2.0.
18) <36 18 18>
84 0 0x425000 0x3000 0x2000 com.apple.driver.AppleI2S (1.0.0d2)
<18>
85 1 0xb3de000 0x1d000 0x1d000 com.apple.driver.ndrv.ATY,Bee.0xb3df
b54 (1.0.1b40)
86 0 0x6cc000 0x6000 0x5000 com.apple.nke.SharedIP (1.3.2) <18>
87 0 0x459000 0x8000 0x7000 com.apple.nke.IPFirewall (1.3) <18>
88 0 0x444000 0xa000 0x9000 com.moschip.driver.MCS7720Driver (1.
0.4) <62 27>
Li-Zen:~ lizen$
```

- 5.3.9 You can go to “**System Preferences**”- “**Network**”. You will see New Port Detected.



6. Setting Up the RS232 Serial Device

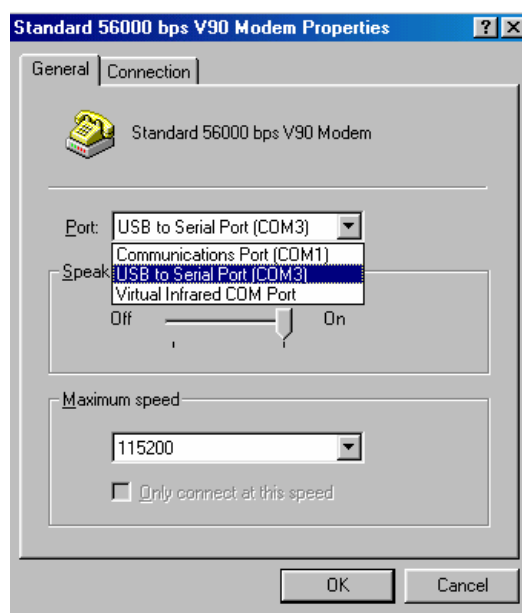
Follow the steps below to connect your RS232 Serial Device (i.e.: Modem) to the USB port of your PC:

6.1 Turn off your Modem. Plug the DB 9 connector of the BF-816 USB to Serial 2 Port into your Modem. Connect the other end of the BF-816 USB to Serial 2 Port to an USB type A to type B cable. Turn on the Modem afterwards.

6.2 Turn on your computer and plug in the USB connector of the USB-Serial adapter into the USB port.

6.3 If you have already installed a Modem device before, click Start, Settings, and Modems. Open Modems Properties, select the Modem, and click Properties. In General tab, please change the Port value to USB to Serial Port (COM3).

6.4 After finishing these processes, you can use USB to Serial Bridge Cable to connect RS232 Serial 56K FAX Modem and execute the Dial-up function to connect Internet, and send the FAX with the FAX software (i.e.: Microsoft FAX) properly.



7. Disclaimer

Information in this document is subject to change without notice. The manufacturer does not make any representations or warranties (implied or otherwise) regarding the accuracy and completeness of this document and shall in no event be liable for any loss of profit or any other commercial damage, including but not limited to special, incidental, consequential, or other damages.

No part of this document may be reproduced or transmitted in any form by any means, electronic or mechanical, including photocopying, recording or information recording and retrieval systems without the express written permission of the manufacturer.

All brand names and product names used in this document are trademarks, or registered trademarks of their respective holders.

8. FCC Statement

This device generates and uses radio frequency and may cause interference to radio and television reception if not installed and used properly. This has been tested and found to comply with the limits of a Class B computing device in accordance with the specifications in Part 15 of FCC Rules. These specifications are designed to provide reasonable protection against such interference in a residential installation. However, there is no guarantee that interference will not occur in a particular installation. If this device does cause harmful interference to radio or television reception, which can be determined by plugging the device in and out, the user can try to correct the interference by one or more of the following measures:

- Reorient or relocate the receiving antenna.
- Increase the separation between the device and receiver.
- Connect the computer into an outlet on a circuit different from that to which the receiver is connected.
- Consult the dealer or an experienced radio/TV technician for help



Free Manuals Download Website

<http://myh66.com>

<http://usermanuals.us>

<http://www.somanuals.com>

<http://www.4manuals.cc>

<http://www.manual-lib.com>

<http://www.404manual.com>

<http://www.luxmanual.com>

<http://aubethermostatmanual.com>

Golf course search by state

<http://golfingnear.com>

Email search by domain

<http://emailbydomain.com>

Auto manuals search

<http://auto.somanuals.com>

TV manuals search

<http://tv.somanuals.com>