



Axis Print Servers

Reliable printer sharing for all networks

Axis has a 15-year proven track record as a leading-edge developer of print servers. Axis print servers offer the reliability and simplicity needed to keep up with the ever-improving printers of today - and tomorrow. Whether in a workgroup, on a small or large LAN, or on an enterprise network, the Axis family of network print servers can offer a suitable printing solution.

Outstanding Reliability

Once installed, Axis print servers will manage all types of print jobs with minimal maintenance. The extended product life will protect the company's investments in printing equipment. This gives administrators peace of mind as well as time to focus on other responsibilities.

Simplicity in Day-to-Day Printing

The characteristics of Axis print servers ensure that administrators and users can handle their daily printing tasks easily:

- Simultaneous multiprotocol support for printer sharing across many platforms (PC, UNIX/Linux, Macintosh)
- Easy setting of IP addresses; automatically or by using simple-to-use tools
- E-mail notification when printer needs assistance
- Safe flash loading of firmware updates
- Compatibility with all major printers on the market
- Multiport versions for connecting several printers
- Small form factor allowing printers to be placed near users



Convenient Web-based Management

AXIS ThinWizard™ is a powerful web-based management software for Axis print servers and other Axis products. It can help administrators with:

- Remote status monitoring of servers and their peripherals, e.g. printers
- Single or batch configuration
- Firmware upgrading



Print Servers for all environments

Find the perfect match!

High-performance networks

LANs with extensive printing demands running multiple operating systems and several protocols concurrently

AXIS 5400+



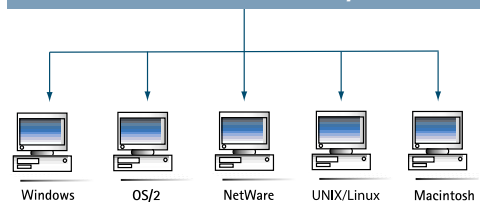
- 10/100baseT Ethernet
- Plugs directly into parallel port of the printer
- High-performance LAN printing

AXIS 5600+



- 10/100baseT Ethernet
- Connects up to 3 printers
- High-performance LAN printing

Fast Ethernet 10/100



AXIS 5800 Mobile



- 10/100baseT Ethernet
- Connects up to 2 printers
- First print server that combines Bluetooth™ wireless printing with wired (LAN) printing

Enterprise printing

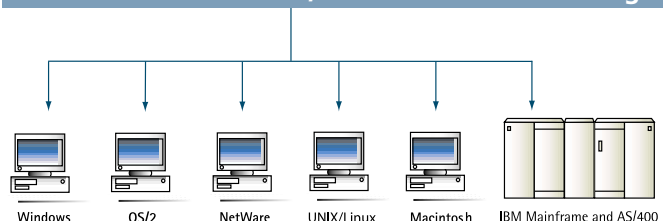
Flexible and cost-efficient host-to-LAN printing from IBM Mainframe and AS/400 systems

AXIS 5470e



- 10/100baseT Ethernet
- Plugs directly into parallel port of the printer
- Native IPDS and non-IPDS printing
- Digital copier finishing options, e.g. copying, hole-punching and stapling

Fast Ethernet 10/100 and Token Ring



AXIS 670e

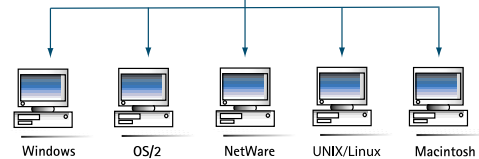


- 4/16 MB Token Ring
- Connects up to 2 printers
- Native IPDS and non-IPDS printing

Medium-sized networks

10baseT Ethernet or Token Ring networks running multiple operating systems and several protocols concurrently

10baseT Ethernet and Token Ring



AXIS 540+



- 10baseT Ethernet
- Plugs directly into parallel port of the printer
- LAN printing

AXIS 640



- 4/16 MB Token Ring
- Plugs directly into parallel port of the printer
- LAN printing

AXIS 560



- 10baseT Ethernet
- Connects up to 3 printers
- LAN printing

AXIS 660



- 4/16 MB Token Ring
- Connects up to 3 printers
- LAN printing

Workgroup networks

PC-based LANs with up to 50 users

Fast Ethernet 10/100



Windows

AXIS OfficeBasic



- 10/100baseT Ethernet
- Plugs directly into parallel port of the printer
- Low-cost pocket version
- Ideal solution for LAN printing in workgroups

Product Selection Guide

Characteristics	Fast Ethernet 10/100					Ethernet		Token Ring		
	AXIS 5800 Mobile	AXIS 5400+	AXIS 5600+	AXIS 5470e*	AXIS OfficeBasic	AXIS 540+	AXIS 560	AXIS 670e	AXIS 640	AXIS 660
Hardware										
Network attachment	RJ-45	RJ-45	RJ-45	RJ-45	RJ-45	RJ-45	RJ-45	UTP STP	UTP STP	UTP STP
Processor	ETRAX 100	ETRAX 100	ETRAX 100	ETRAX 100	ETRAX 100	ETRAX 4	ETRAX 4	ETRAX 4	ETRAX 4	ETRAX 4
Parallel ports	2	1	2	1	1	1	2	2	1	2
Serial ports	-	-	1	-	-	-	1	1	-	1
Flash memory	2 MB	1 MB	1 MB	2 MB	1 MB	1 MB	1 MB	2 MB	1 MB	512 kB
RAM	8 MB	2 MB	2 MB	8 MB	2 MB	256 kB	256 kB	2 MB	256 kB	512 kB
Supported protocols										
Windows 95 / 98 / ME / NT / 2000	■	■	■	■	■	■	■	■	■	■
TCP/IP	■	■	■	■	■	■	■	■	■	■
NetWare Bindery and NDS	■	■	■	■	-	■	■	■	■	■
NetWare NDPS	■	■	■	■	-	■	■	■	■	■
LAN Manager/LAN Server	■	■	■	■	-	■	■	■	■	■
LANtastic	■	■	■	■	-	■	■	■	■	■
UNIX/Linux	■	■	■	■	■	■	■	■	■	■
IPP	■	■	■	■	-	-	-	■	■	■
Apple EtherTalk	■	■	■	■	-	■	■	-	-	-
IBM Mainframe and AS/400	-	-	-	■	-	-	-	■	-	-
IBM transports										
SNA	-	-	-	■	-	-	-	■	-	-
TN3270E	-	-	-	■	-	-	-	■	-	-
TN5250E	-	-	-	■	-	-	-	■	-	-
PPR/PPD	-	-	-	■	-	-	-	■	-	-
IBM data streams										
IPDS	-	-	-	■	-	-	-	■	-	-
SCS	-	-	-	■	-	-	-	■	-	-
3270DS	-	-	-	■	-	-	-	■	-	-
Special features										
Web-based management	■	■	■	■	■	■	■	■	■	■
AXIS ThinWizard support	■	■	■	■	-	■	■	■	■	■
JetAdmin support	■	■	■	■	-	■	■	■	■	■
Logical printers	■	■	■	■	-	■	■	■	■	■
Auto-IP functionality	■	■	■	-	-	-	-	-	-	-
E-mail notification	■	■	■	-	-	-	-	-	-	-
NetWare Packet Signature Level 3	■	■	■	■	-	-	-	■	-	-
Safe flash loading	■	■	■	■	■	-	-	-	-	-
Web flash loading	■	■	■	-	-	-	-	-	-	-
Multi-language support	■	■	■	-	-	-	-	-	-	-
Wireless printing	■	-	-	-	-	-	-	-	-	-
Digital copier finishing options	-	-	-	■	-	-	-	-	-	-

* These characteristics refer to the AXIS 5470e Copier model. The AXIS 5470e print server series also includes TCP/IP, SNA and IPDS models. For details on these models, please visit the Axis web site at www.axis.com



Convenient Web-based Management

AXIS ThinWizard™

AXIS ThinWizard™ is a powerful web-based management tool for central administration of Axis print servers and all other Axis products.

What can AXIS ThinWizard offer?

In a TCP/IP network, AXIS ThinWizard helps the administrator find, monitor and configure all print servers remotely via a standard web browser. This ensures more efficient use of time and network resources.

AXIS ThinWizard runs on Windows 95/98, NT and UNIX/Linux. It provides the following services:

- Automatic discovery of Axis products on IP networks
- Basic network installation, e.g. TCP/IP settings
- Flexible grouping of Axis products for viewing and managing several servers as an entity
- Printer status monitoring, e.g. out of paper
- Seamless remote management

Upgrade Wizard

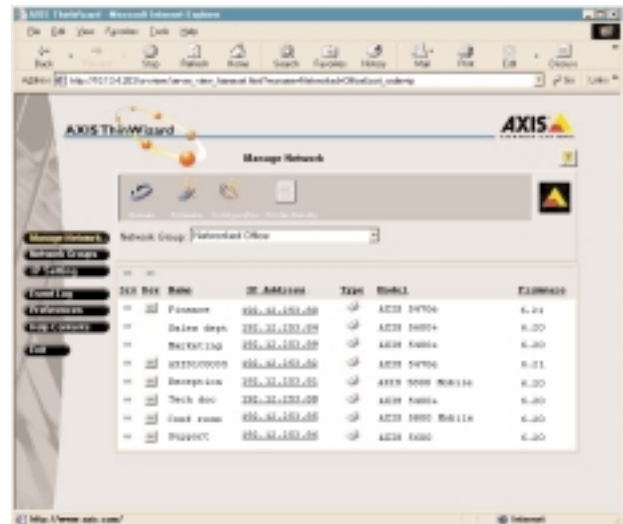
Via the upgrade Wizard, the Axis servers automatically notify the administrator when new firmware becomes available from Axis. Firmware upgrades are simple. Using a web browser, administrators can choose firmware upgrades for one or several servers at a time.

Network Groups

By organizing the network into network groups, your print servers can be monitored more efficiently. A network group is defined by the specific IP address ranges and the specific server types, e.g. print servers, storage servers, that are included. The administrator can create as many network groups as needed.

Use your time and network resources efficiently!

AXIS ThinWizard can be downloaded free of charge from the Axis web site at www.axis.com



AXIS ThinWizard, Release 2.00

The latest software version of AXIS ThinWizard includes additional features and benefits:

Configuration Wizard

One or more parameters of several Axis servers can be changed simultaneously. Also the configuration can be copied from one server to one or multiple servers.

Management of Non-Axis Print Servers

AXIS ThinWizard will also find print servers from Hewlett-Packard, Intel and Lexmark. With a simple mouse click, the administrator can manage these print servers via their internal web pages. Thus administrators with mixed product networks can benefit from consistent management and administration by using Axis management software.

IP Address Assignment

AXIS ThinWizard will discover non-configured print servers and allow the administrator to assign it an IP address. (Print server requires firmware version 6.20 or higher.)

Printer-friendly View

Every print server on the network can be listed with a descriptive name and physical location.

Models

- Refer to Product Selection Guide for details on various models

Installation

- Microsoft Windows: Software drivers for all Windows platforms. Auto-installation of print servers and printers in Windows 95/98/ME/NT4/2000 and TCP/IP
- NetWare: AXIS NetPilot Utility
- LAN Manager and LAN Server: AXIS Print Utility for OS/2
- UNIX: Installation script resident in memory. No discs or tapes required
- Macintosh: Standard installation using Chooser
- AS/400: Automatic AS/400 configuration supported for TN5250E and SNA 5494 CU emulation

Network Management

- SNMP-MIB II compliant (over UDP/IP and IPX), private enterprise MIB included
- Print server/job/printer status presentation and management via NWAdmin/PCONSOLE
- AXIS ThinWizard and embedded web pages for remote monitoring, configuration and firmware upgrading

Security

- NetWare: Encrypted passwords
- NetWare Packet Signature Level 1, 2, 3. Enables documents to be sent across the network without risk of interception
- UNIX/Linux: Root password, user access list and printer access

Firmware Updates

- Flash memory allows simple, central and remote firmware updates over the network using FTP
- Web flash loading directly from the web interface without use of any client software
- Safe flash loading ensures that the new firmware is downloaded before the old version is deleted

Auto-IP Functionality

- The print server will always receive an IP address automatically

E-mail Notification

- E-mail notification when printer needs assistance, e.g. out of paper or toner refill

Multi-language Support

- Web interface can be displayed in the following languages: English, German, French or Spanish

Logical Connection

- Fast Ethernet: Supports NWay which provides auto-detection of network speed. Use of IEEE802.2, IEEE802.3, SNAP and Ethernet II frame types simultaneously
- Ethernet: Use of IEEE802.2, IEEE802.3, SNAP and Ethernet II frame types simultaneously
- Token Ring: Use of IEEE802.2, IEEE802.5 (with Early Token release support for 16 MB/sec) frame types simultaneously

Network Attachments

- Fast Ethernet: RJ-45 connector (Cat 5 twisted pair cable) for 10baseT Ethernet or 100baseTX Fast Ethernet
- Ethernet: 10baseT (thin) and 10baseT (twisted pair)
- Token Ring: Media type I/DB89/STP and type 3/RJ-45/UTP. Support for 4/16 MB

Logical Printers

- The logical printer ports can be programmed to perform auto ASCII-to-PostScript conversion, string before and after job, string substitution, alternative output, character set conversion

Parallel Ports

- Single-port models: 36-pin Centronics connector parallel port, high-speed IEEE 1284 compliant
- Multi-port models: Two 25-pin DSUB parallel ports, high-speed IEEE 1284 compliant
- For applicable models, bi-directional support for Raw TCP, Apple and PROS

Serial Ports

- RS-232, 9-pin DSUB connector. XON/XOFF or RTS/CTS
- Data rates up to 115,200 kbit/sec

Dimensions

- Single-port models*, typically:
Height: 1.1 in/2.5 cm
Width: 2.2 in/5.6 cm
Depth: 4.7 in/12.0 cm
Weight: 0.26 lbs/ 0.12 kg
- Multi-port models*, typically:
Height: 1.0 in/2.7 cm
Width: 6.1 in/15.5 cm
Depth: 4.7 in/12.0 cm
Weight: 0.55 lbs/ 0.25 kg
- * varies slightly by model and connector

Environmental

- Temperature: 40-105°F (5-40°C)
Humidity: 10-95% non-condensing

Approvals

- EMC CE; EN 55022/1987, EN50082-1/1992, FCC Class A

Safety

- EN 60950, approved power supplies for all countries

Processor

- 32-bit RISC controller (ETRAX 100 or ETRAX 4)

Front Panel

- 2 LED indicators: Power and Network
- Push button for information printouts



For more information visit our web site:

www.axis.com

Free Manuals Download Website

<http://myh66.com>

<http://usermanuals.us>

<http://www.somanuals.com>

<http://www.4manuals.cc>

<http://www.manual-lib.com>

<http://www.404manual.com>

<http://www.luxmanual.com>

<http://aubethermostatmanual.com>

Golf course search by state

<http://golfingnear.com>

Email search by domain

<http://emailbydomain.com>

Auto manuals search

<http://auto.somanuals.com>

TV manuals search

<http://tv.somanuals.com>