

AVerMedia® EB1004 BAK

Real-time Security DVR

Operations Manual



P/N: 300AABLP
MADE IN TAIWAN

FCC NOTICE

This device has been tested and found to comply with the limits for a Class A digital device, pursuant to Part 15 of the FCC Rules. These limits are designed to provide reasonable protection against harmful interference in a commercial, industrial or business environment. This equipment can generate, use and radiate radio frequency energy and, if not installed and used in accordance with the instruction, may cause harmful interference to radio communications. However, there is no guarantee that interference will not occur in a particular installation. If this equipment does cause harmful interference to radio or television reception, which can be determined by turning the equipment off and on, the user is encouraged to try to correct the interference by one or more of the following measures:

- Reorient or relocate the receiving antenna.
- Increase the separation between the equipment and receiver.
- Connect the equipment into an outlet on a circuit different from that to which the receiver is connected.
- Consult the dealer or an experienced radio/TV technician for help.

This device complies with Part 15 of the FCC Rules. Operation is subject to the following two conditions: (1) this device may not cause harmful interference, and (2) this device must accept any interference received, including interference that may cause undesired operation.

CAUTION ON MODIFICATIONS

To comply with the limits for the Class A digital device, pursuant to Part 15 of the FCC Rules, this device must be installed in computer equipment certified to comply with the Class A limits. All cables used to connect the computer and peripherals must be shielded and grounded. Operation with non-certified computers or non-shielded cables may result in interference to radio or television reception.

Any changes or modifications not expressly approved by the grantee of this device could void the user's authority to operate the equipment.

CE NOTICE

This is a Class A product.

DISCLAIMER

No warranty or representation, either expressed or implied, is made with respect to the contents of this documentation, its quality, performance, merchantability, or fitness for a particular purpose. Information presented in this documentation has been carefully checked for reliability; however, no responsibility is assumed for inaccuracies. The information contained in this documentation is subject to change without notice.

In no event will AVerMedia be liable for direct, indirect, special, incidental, or consequential damages arising out of the use or inability to use this product or documentation, even if advised of the possibility of such damages.

TRADEMARKS

AVerMedia is a registered trademark of AVerMedia TECHNOLOGIES, Inc. All other products or corporate names mentioned in this documentation are for identification and explanation purposes only, and may be trademarks or registered trademarks of their respective owners.

COPYRIGHT

© 2004 by AVerMedia TECHNOLOGIES, Inc. All rights reserved. No part of this publication may be reproduced, transmitted, transcribed, stored in a retrieval system, or translated into any language in any form by any means without the written permission of AVerMedia TECHNOLOGIES, Inc.



WARNING

TO REDUCE RISK OF FIRE OR ELECTRIC SHOCK,
DO NOT EXPOSE THIS APPLIANCE TO RAIN OR MOISTURE.



CAUTION

DO NOT REMOVE COVER. NO USER SERVICEABLE PARTS
INSIDE. REFER SERVICING TO QUALIFIED SERVICE PERSONNEL.

Table of Contents

Introduction	3
Features and Specifications	3
Front Panel	4
Back Panel	6
Setting Up the DVR Unit.....	6
Installing Hard Drives	6
Install the Hard Drive in a Removable Case.....	7
Install a Removable Hard Drive Case in a PC (Optional)	8
Connecting Devices	8
Basic Devices	8
Optional Devices	9
Operating the DVR Unit.....	10
First Time Use	10
Surveillance Screen	10
Video Recording and Playback.....	11
Setup Menu.....	13
MAIN MENU.....	14
CAMERA SELECT.....	14
RECORD SELECT	15
RECORD MODE	15
RECORD FRAMERATE	15
VIDEO QUALITY	16
RECORD SCHEDULE	16
SUB MENU.....	17
PASSWORD CHANGE	17

TIME SET	18
VGA SETUP	19
MOTION SETUP	19
HARD DRIVE SETUP	19
OVERWRITE ENABLED	21
MASTER HDD SIZE and MASTER HDD USED	21
MASTER HDD FORMAT	21
SLAVE HDD SIZE and SLAVE HDD USED.....	21
SLAVE HDD FORMAT	21
SENSOR SETUP.....	22
SENSOR RECORD TIME	22
ALARM OUT TIME.....	20
CHANNEL1 ~ CHANNEL4.....	20
Connect to a PC	23
FIRST TIME USE	23
OPERATING EB-DVR PLAYBACK APPLICATION.....	25
CHANNEL SELECTION.....	26
FREE VIDEO PLAYBACK.....	27
CATCH IMAGE AND VIDEO	28
SNAPSHOT	28
PRINT	28
AVI FILES.....	28
Warranty Notice.....	30

Introduction

EB1004 BAK is a stand-alone, non-PC based DVR unit that provides real-time monitoring and digital recording of surveillance video. Up to four video cameras and four sensor devices can be hooked up to this DVR unit. It is also equipped with an output relay that allows connection of an alarm device.

Surveillance, digital recording and playback are controlled through the front panel buttons. Users can connect EB-1004 BAK to a PC to trace back video files, and even save image as both BMP and AVI files. With the on-screen-display (OSD) menu, you can customize video recording settings, sensor and alarm settings, password protection, hard drive recycling, and more.

Surveillance video is recorded in high-quality Motion-JPEG format. Two recording modes are available. **EACH** mode records video from each video camera in 640 x 224 resolution at 7.5 fps. **QUAD** mode records video in 320 x 112 resolution and up to 30 fps/25 fps (NTSC/PAL).

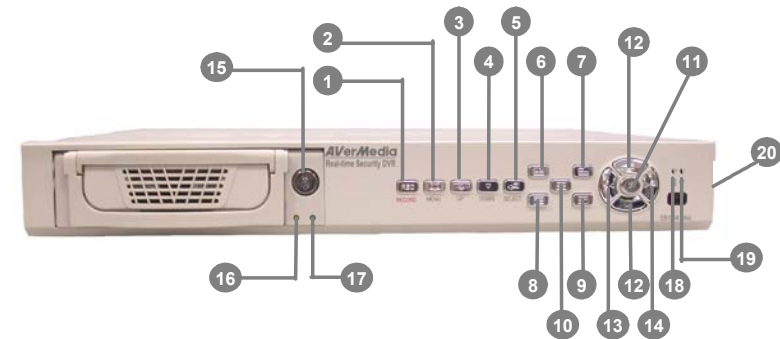


Features and Specifications










- Non-PC stand-alone security digital video recorder
- 4 composite video inputs and 1 composite output
- VGA output for LCD monitor display
- Front panel buttons and OSD control
- Motion-JPEG video compression
- Factory defaulted to NTSC or PAL
- Supports 2 hard drives (not included)

- Full-screen resolution:
Display: 720 x 480 (NTSC), 720 x 576 (PAL)
Recording: 640 x 224 (NTSC), 640 x 272 (PAL)
- Display and recording frame rate:
Quad mode: 30/25 fps (NTSC/PAL) per channel, total of 120/100 fps (NTSC/PAL)
- Scheduled recording (00:00~23:00 selectable)
- Search for recorded videos by date/time/event
- Input/Output: 4 sensor inputs and 1 relay output control
- Motion detection recording.
- Removable HDD bay
- 1 USB 2.0 Port
- Application driver CD (for Windows 2000/XP)

Front Panel



- 1 REC** : Start video recording.
- 2 MENU** : Open/Close the OSD main menu or subsequent submenus.
- 3 ▲** : Go up one item.
- 4 ▼** : Go down one item.
- 5 SELECT** :
(a) Cycle through various options in a selected menu item.
(b) Open a submenu

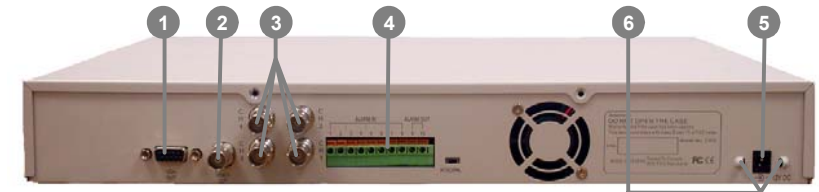
- 6  :
 (a) Display Channel 1 in full-screen.
 (b) When in the OSD menu, pressing button is equivalent to entering the number "1".
- 7  :
 (a) Display Channel 2 in full-screen.
 (b) Pressing this button is equivalent to entering the number "2" when in the OSD menu.
- 8  :
 (a) Display Channel 3 in full-screen.
 (b) Pressing this button is equivalent to entering the number "3" when in the OSD menu.
- 9  :
 (a) Display Channel 4 in full-screen.
 (b) Pressing this button is equivalent to entering the number "4" when in the OSD menu.
- 10  :
 Display cameras in quad screen.
- 11  :
 (a) Display the Playlist. (b) Play back a recording.
- 12  :
 (a) Pause playback. (b) Pause/Stop recording.
- 13  : Fast reverse during playback.
- 14  :
 (a) Fast forward during playback.
 (b) Toggle between the Playlist and the date/time search controls.
- 15 Removable hard disk rack with lock

CAUTION

BEFORE REMOVING THE REMOVABLE OR INTERNAL HARD DISK, POWER OFF THE DVR UNIT FIRST.

- 16 Removable Power LED
 17 Removable Hard disk LED
 18 Hard disk LED
 19 DVR Power LED
 20 USB2.0 Socket

Back Panel



- 1 **VIDEO OUT (BNC)** : Composite video output for connection to a television monitor.
- 2 **VGA OUT (15-pin D-Sub)** : VGA output for connection to a VGA monitor.
- 3 **CH1 ~ CH4 (BNC)** : Composite video input for connection of up to four video cameras. (Video input : V = 1 Vp-p)
- 4 **Sensor Inputs and Relay Output** : For connection of up to 4 sensor devices and an alarm device. (Relay : 1A @ 125V AC/30V DC)
- 5 **Power Socket** : For connecting the power adapter. (12V @ 4.2A)
- 6 **Ω Hook**: Fix the power adapter after it is plugged into Power Socket.

Setting Up the DVR Unit

Installing Hard Drives

Before you install hard drives, please adjust the jumpers' setting according to users' demands. Please refer to your hard disk label to adjust jumpers' settings.

The DVR unit allows you to install up to two hard drives (a master and slave drive).

Install the master hard drive inside DVR unit and fix it, and put the slave hard drive in a removable hard disk bay as the right picture shows.



Install the Hard Drive in a Removable Case

1. Remove the removable hard drive drawer from the case.
2. Remove the upper cover of the drawer.
3. Connect the power connector to the hard drive as the right picture shows.
4. Connect the hard disk connector into the inner tray's slot.
5. Close the upper cover. Slide the drawer into the removable hard drive case.
6. Power on the unit to see the LED indicators on the triple frame holders. If the LED indicators light up, you may use the hard disk.



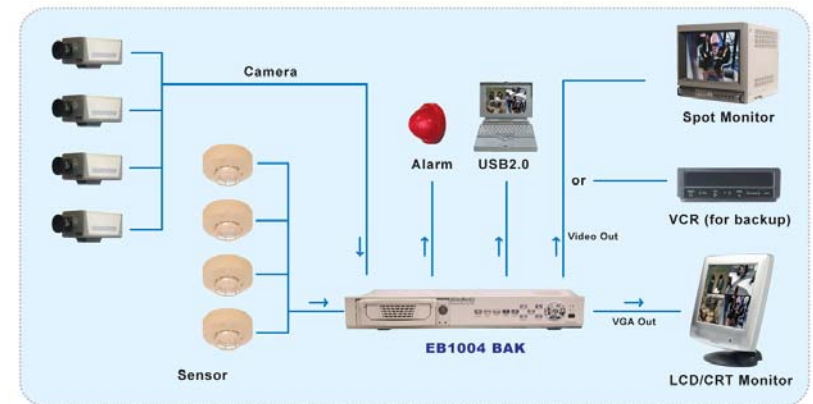
Install a Removable Hard Drive Case in a PC (Optional)

For users who purchase an optional hard drive case, please follow the steps to install the case in a PC.

1. Power off your PC and remove the cover of your PC.
2. Remove a front cover and free a 5 1/4" drive bay. Insert the hard disk holder. Mount the hard disk holder, screw up the holder, and connect the IDE slot and power connector from PC's motherboard.
3. Remove the drawer of the removable hard disk case. Please refer to **Install the Hard Drive in a Removable Case to install the hard drive.**
4. Slide the drawer into the removable hard disk case, power on the PC and check the LED indicators. If the LED indicators light up, it is ok to use the hard drive in the removable case.

Connecting Devices

At the back panel of the DVR unit, you can connect up to four video cameras, four sensor devices, and one alarm device. You can connect a VGA monitor or a television monitor as a display device. Use a USB cable to connect to a PC if it is necessary.



Connecting cameras, sensors, alarm, and display device

Basic Devices

- Cameras

Connect the video output of each video camera or composite video source to the **CH1 ~ CH4** connectors.

- **VGA monitor**

Connect a VGA monitor to the **VGA OUT** connector of the DVR unit to use as a display for video surveillance and playback.

- **Power adapter**

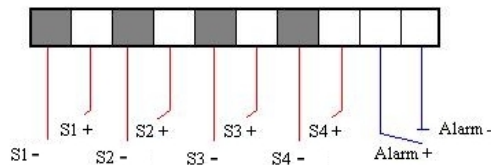
Plug the provided 110V AC or 220V power adapter into the DVR unit's power socket.

Optional Devices

- **Television monitor**

Use a BNC-to-RCA adapter to connect a regular TV monitor to the DVR unit's **VIDEO OUT** connector.

- **Sensors and alarm device**



Connect up to four sensor devices to the terminals that are numbered 1 to 8 at the back panel. Each pair of terminals is for the ground (-) and positive (+) input voltage. For instance:

- Terminal 1 : Connect to the ground (-) wire of Sensor 1
- Terminal 2 : Connect to the positive (+) wire of Sensor 1
-
-
- Terminal 7 : Connect to the ground (-) wire of Sensor 4
- Terminal 8 : Connect to the positive (+) wire of Sensor 4

Connect an alarm device to the terminals that are numbered 9 and 10:

- Terminal 9 : Connect to the positive (+) wire of the alarm device
- Terminal 10 : Connect to the ground (-) wire of the alarm device

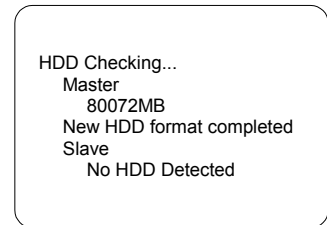
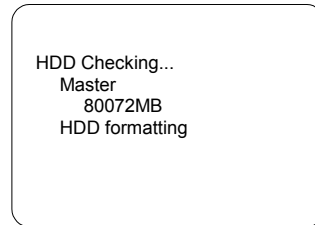
- **Desktop/Laptop computer**

Connect EB 1004 BAK to a PC with a USB cable. Insert the USB connector to PC's USB socket.

Operating the DVR Unit

First Time Use

Connecting the DVR unit to a power outlet automatically turns on its power. When the DVR unit is newly installed or replaced with hard drive(s), the hard drive(s) will automatically be formatted.



Surveillance Screen

Surveillance video can be viewed and recorded in two screen modes: **EACH** mode and **QUAD** mode.

Under the **EACH** mode, video from the video cameras is recorded in full-screen resolution, but each video takes turns in being recorded (from one camera to the next). Each of the surveillance videos is recorded only at a maximum frame rate of 7.5fps. When viewing live video using **EACH** mode, you can switch between full screen and quad screen.

Whereas in **QUAD** mode, video from the video cameras is recorded at a lower resolution, yet each video is recorded in full frame rate, full motion. Videos recorded in **QUAD** mode can only be played back in **QUAD** mode.

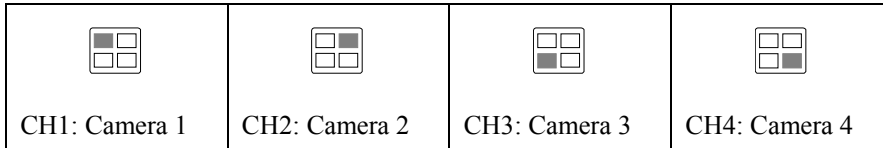


EACH mode



QUAD mode

Use the following front panel buttons to select the desired video camera to display in full screen:



Note: The recording mode can be selected in the OSD main menu.

Video Recording and Playback

To record surveillance video:

- 1 To customize recording settings, press the **MENU** button and choose the desired recording settings. Refer to the section, "Setup Menu" for details.
- 2 Press the **REC** button. During recording, the screen shows the following:



- 3 To stop the recording, press **■**.

To play back the recorded video:

- 1 Press **▶** to display the Playlist:



- 2 If you want to switch to the other hard drive or search for a range of video recordings, press **▶**. The ">" arrowhead cursor will then move up to the top of the screen.



- 3 Press the **SELECT** button to switch between the MASTER and SLAVE drives.
- 4 Press **▼** to move down to the recording date and time entries.
- 5 Press **▶** or **◀** to move through each item in the recording date and time entries. While on an item such as the month, press the **SELECT** button repeatedly to cycle through the numbers, and stop pressing the button when you have reached the desired number.
- 6 Press **▶▶** to move the cursor back to the Playlist.
- 7 Press **▼** or **▲** to move up or down in the Playlist.
- 8 When you have selected the desired video recording, press **▶** to play back.
- 9 To fast forward through the video, press **▶▶**. To fast reverse, press **◀◀**.
- 10 Press **||** to pause playback, or press **■** to stop playback.

- (1 2 3 4) : Switch on all camera displays.
- (1 - - 4) : Switch on camera display 1 and 4 only.
- (- 2 3 -) : Switch on camera display 2 and 3 only.
- (- - -) : Disable all camera displays.

RECORD SELECT

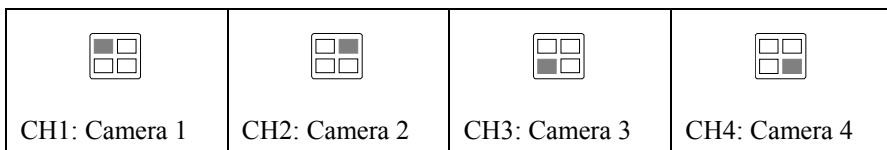
This determines which of the cameras surveillance video will be recorded from. The way to select cameras is the same as CAMERA SELECT.

Note: Only the enabled camera displays in the CAMERA SELECT item can be selected for recording.


RECORD MODE

There are two recording modes to choose from: **EACH** and **QUAD**.

When you choose the **EACH** recording mode, you can view each camera display in full-screen during the recording process by using the following front panel buttons:



Likewise, when you finish recording, you can also play back the recorded video in full-screen by using the above buttons.

While viewing or recording video in full screen, press  to switch the display back to quad screen.

Note: Refer to the section "Surveillance Screen" on page 10 for details on the differences between **EACH** and **QUAD** modes.

RECORD FRAME RATE

This sets the number of images per second of video that is recorded.

By default, frame rate is set at 30 fps for NTSC, 25 fps for PAL. There are 10 different frame rates you can choose from.

VIDEO QUALITY

There are three video quality settings to choose from: BEST, GOOD or NORMAL.

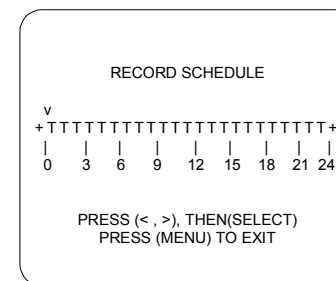
Choosing NORMAL allows you to save more on hard drive space, but the quality of recorded video images is moderate.

Recording hours on 40GB hard drive:

Video Signal	Display Format	Video Quality	30 fps	15 fps	7 fps	1 fps
NTSC	QUAD mode	BEST	18 hrs	36 hrs	72 hrs	540 hrs
		GOOD	24 hrs	48 hrs	96 hrs	720 hrs
		NORMAL	29 hrs	58 hrs	116 hrs	870 hrs
	EACH mode	BEST	32 hrs	64 hrs	128 hrs	960 hrs
		GOOD	45 hrs	90 hrs	180 hrs	1350 hrs
		NORMAL	56 hrs	112 hrs	224 hrs	1680 hrs
PAL	QUAD mode	BEST	19 hrs	38 hrs	76 hrs	475 hrs
		GOOD	24 hrs	48 hrs	96 hrs	600 hrs
		NORMAL	30 hrs	60 hrs	120 hrs	750 hrs
	EACH mode	BEST	31 hrs	62 hrs	124 hrs	775 hrs
		GOOD	45 hrs	90 hrs	180 hrs	1125 hrs
		NORMAL	59 hrs	118 hrs	236 hrs	1475 hrs

RECORD SCHEDULE

By default, the DVR unit is customized for continuous 24-hour video recording. If you prefer to record video only at certain time schedules within a day, you can choose specific recording hours. If the DVR unit is connected to sensor devices, you can also customize the unit to initiate video recording only when the sensors detect an event.

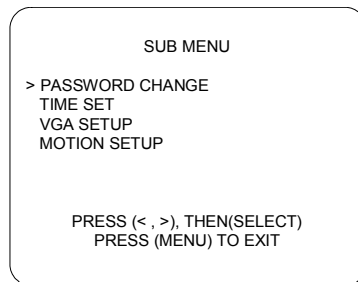


To customize the recording schedule:

- 1 Each number in the PROGRAMMED RECORD menu represents the time schedule (in hours) for recording, and the "v" cursor indicates the time that is selected. Press **▶** or **◀** to move through the time schedules.
- 2 Press the **SELECT** button repeatedly to cycle through these settings:
 - (T) For automatic non-stop video recording
 - (S) For sensor recording. The DVR unit initiates recording only when the attached sensor devices detect motion from the video cameras.
 - (M) For motion recording. The DVR unit initiates recording only when motion is detected from video cameras.
 - (-) Disables recording at that time schedule.

SUB MENU

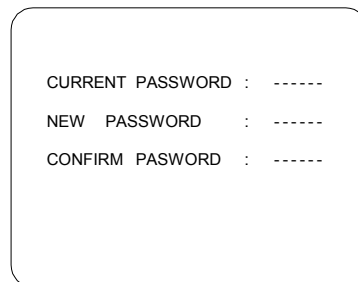
The SUB MENU allows you to change the password, system date and time, and VGA display settings.



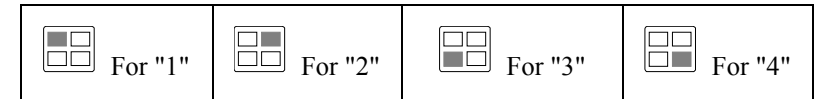
PASSWORD CHANGE

To change the password:

- 1 Input the prompted information:



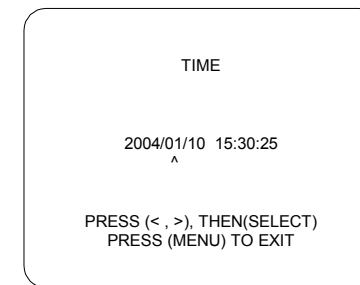
The factory default password is "111111". Use the following front panel buttons to input a numeric password:



- 2 The "Password changed" message is then displayed. This message flashes three times, then you will be returned to the SUB MENU.

Note: You will be prompted to enter the password when you attempt to format the hard drive(s) in the HARD DRIVE SETUP menu.

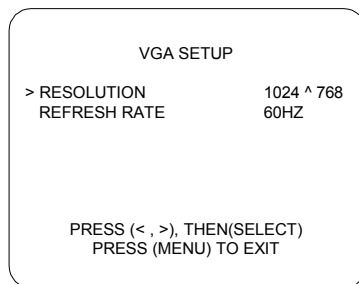
TIME SET



To change the system date and time:

- 1 Press **▶** or **◀** to move through the "year/month/day" and "hour:minute:second" entries. The "^" cursor indicates the entry that is selected.
- 2 Per selected entry, press the **SELECT** button repeatedly to cycle through the numbers. Stop pressing the button when you reach the desired number.

VGA SETUP

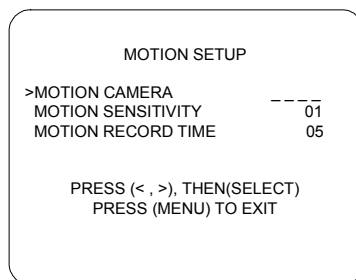


Set RESOLUTION and REFRESH RATE based on the supported display mode and refresh rate of the VGA monitor that is connected to the DVR unit. Different monitors support different refresh rates:

Resolution	Refresh Rate Frequency (Hz)
640 x 480	60, 72, 75, 85
800 x 600	60, 72, 75, 85
1024 x 768	60, 70, 75, 85
1280 x 1024	60

Note: The best refresh rate for LCD monitor is 60Hz.

MOTION SETUP



To change MOTION CAMERA,

1. Press ▼ or ▲ to move the arrowhead cursor to MOTION CAMERA in the menu.
2. Press the channel buttons to select cameras that you want to setup.

To setup all camera, press . You will see the screen shows MOTION CAMERA 1 2 3 4. Press the same button again to cancel the setting.

To setup channel 1 and 4 only, press . You will see the screen shows MOTION CAMERA 1 _ _ 4. Press the same buttons again to cancel the setting.

To setup channel 2 and 3 only, press . You will see the screen shows MOTION CAMERA _ 2 3 _. Press the same buttons again to cancel the setting.

To adjust MOTION SENSITIVITY,

1. Press ▼ or ▲ to move the arrowhead cursor to MOTION SENSITIVITY in the menu.
2. Press the **SELECT** button repeatedly to cycle through the numbers. The sensitivity level ranges from 1 to 10. Level 1 is the least sensitive one and Level 10 is the most sensitive one.

To setup the Motion Time,

1. Press ▼ or ▲ to move the arrowhead cursor to MOTION TIME in the menu.
2. Press the **SELECT** button repeatedly to cycle through the numbers. The time setting ranges from 5 to 30 seconds. Stop pressing the button when reach the desired numbers.

HARD DRIVE SETUP

HARD DRIVE SETUP	
> OVERWRITE ENABLED	YES
MASTER HDD SIZE	80072MB
MASTER HDD USED	16014MB 20%
MASTER HDD FORMAT	
SLAVE HDD SIZE	N/A
SLAVE HDD USED	N/A
SLAVE HDD FORMAT	
PRESS (< , >), THEN(SELECT) PRESS (MENU) TO EXIT	

OVERWRITE ENABLED

This allows old video recordings on the hard drive(s) to be automatically overwritten with new recordings when hard drive space is full.

Press the **SELECT** button to enable or disable this feature (i.e., choose YES or NO).

MASTER HDD SIZE and MASTER HDD USED

These items show the MASTER hard drive capacity and the amount of disk space that has been used up by the video recordings.

MASTER HDD FORMAT

Press the **SELECT** button on this menu item to reformat the MASTER hard drive. You will then be prompted to enter the password. If an invalid password is entered, you will not be allowed to format the hard drive.

Note: All recordings on the MASTER hard drive will be deleted when you reformat the hard drive.

SLAVE HDD SIZE and SLAVE HDD USED

These items show the SLAVE hard drive capacity and the amount of disk space that has been used up by the video recordings.

SLAVE HDD FORMAT

Press the **SELECT** button on this menu item to reformat the SLAVE hard drive. You will then be prompted to enter the password. If an invalid password is entered, you will not be allowed to format the hard drive.

Note: All recordings on the SLAVE hard drive will be deleted when you reformat the hard drive.

SENSOR SETUP

SENSOR SETUP	
> SENSOR RECORD TIME	15
ALARM OUT TIME	05
CHANNEL 1	NORMAL-CLOSE
CHANNEL 2	NORMAL-OPEN
CHANNEL 3	NOT INSTALLED
CHANNEL 4	NOT INSTALLED
PRESS (< , >), THEN(SELECT) PRESS (MENU) TO EXIT	

SENSOR RECORD TIME

This determines the duration of sensor recording (in minutes) in the event that the sensor devices detect an event. There are seven selections to choose from.

ALARM OUT TIME

This determines the duration of sound (in minutes) that is set off when the alarm device is triggered.

CHANNEL1 ~ CHANNEL4

These correspond to the four sets of sensor inputs on the DVR unit. Customize these according to the initial state of the attached sensor devices. There are three states to choose from:

NOT INSTALLED : Indicates that the channel does not have a sensor device connected.

NORMAL-OPEN : Indicates that the initial state of the sensor device is Normal-Open. When the sensor device detects an event and its state changes to Normal-Close, video recording is initiated.

NORMAL-CLOSE : Indicates that the initial state of the sensor device is Normal-Close. When the sensor device detects an event and its state changes to Normal-Open, video recording is initiated.

Connect to a PC

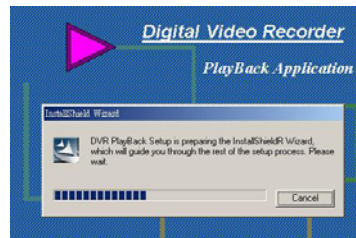
EB1004 BAK provides a convenient tool to trace back the recorded surveillance video, catch specific images and save as AVI files. With the EB-DVR Playback Application, users can play back the surveillance video, catch images and backup all recorded images easily .

First Time Use

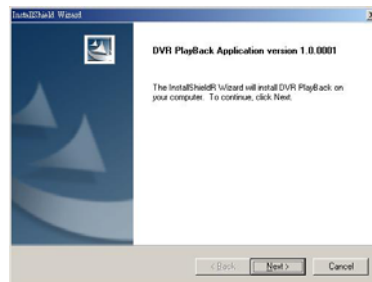
Connecting DVR unit to a power outlet automatically turns on its power. Plug a USB connector into the USB socket of a PC when the PC is off. Follow the instructions to install the driver:

1. Insert the CD driver into CR-ROM's plate. It will auto-run. You will see the screen on the right side.

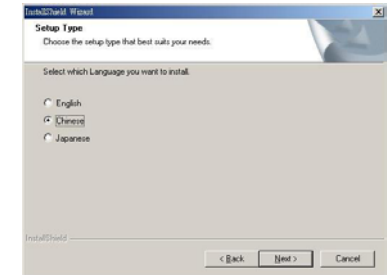
Note: The application supports Windows 2000/XP only.



2. Click **Next**. Follow the steps to finish the installation.

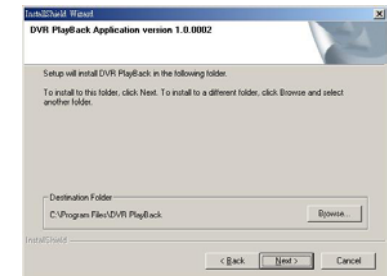


3. Select a language. Click **Next** to continue the installation.

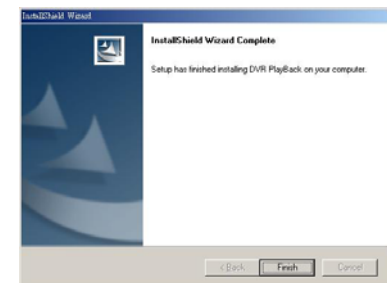


4. Please click **Browser..** to change the directory if it is necessary. Click **Next** to continue the installation.

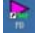
Note: You can see the DVR-Playback Application version on the top of this screen when you install this application.



5. Click **Finish** to complete the installation.



Operating EB-DVR Playback Application

Click  to run the application. Select the Hard Disk and click **OK**.



Note: The DVR's HDD number will be next to your PC's HDD number. If there is only one hard disk in PC, PC's hard disk will be HDD1 and DVR's hard disk will be HDD2 and so on. DVR's HDD will not be shown under PC's Operating System.

You will see EB-DVR screen as followed.



- 1.
2. Change Driver: Switch between different hard disks.
3. Event List: Display all the recorded events stored in hard disks.
4. Play: Play the recorded video.

5. Backward play: Play the video backward.
6. Play one frame: Display a forward static frame.
7. Back one frame: Display a backward static frame.
8. Pause: Pause the playback.
9. Forward Search: Fast play the recorded video to search an appointed image.
10. Stop: Stop the playback
11. Snapshot: Save the present screen as a BMP file.
12. Print: Print the current display.
13. AVI file: Record an appointed video and save it as an AVI file.
14. Version Identification: Press Ctrl + Alt + V buttons to see the product version if you need this when you contact with customer service.

For users **with only one hard disk** in EB-DVR unit, there are 2 ways to read the data in the hard drive. One way is to install the hard disk inside the EB-DVR unit and utilize a USB cable to connect both EB-DVR unit and PC. In this situation, please read the data in the master hard drive by EB-DVR application. The other way is to install the master hard disk in the removable hard disk case, insert the removable hard disk drawer into PC and then read the data by EB-DVR application.


For users **with 2 hard disks** in EB-DVR unit, users can connect EB-DVR unit to PC with a USB cable to read the **master** hard disk inside the machine. To read the **slave** drive inside the removable hard disk drawer, please insert the drawer to PC and use to EB-DVR application to read the data.

Channel Selection

This determines which of the cameras will be displayed on the surveillance screen.

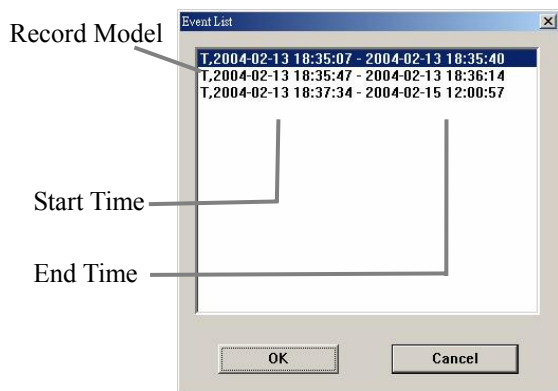
Choose an appointed channel to display the surveillance screen by clicking the channel icon. Click once to show a full-screen display. To show a quad screen, click the same icon again.



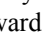
Free Video Playback

After selecting the appointed hard drive, click  to select an event and click **OK** to play back the appointed surveillance.

When you click the Event List icon, it pops-up an event table as the following illustration shows. You will see the table shows **Record mode**, **Start time** and **End time** of each event. Record Mode can be “T”, “M” or “S”. “T” represents **Total Recording**, which means the camera keeps on recording continually. “M” means **Motion Recording**, which means the recording starts once the camera detects motion. “S” represents **Sensor Recording**, which means the camera records when the sensor detects an event.





Event List enables you to playback any recorded event anytime.



When you decide which event to play, click  to display the video or click  to display a recorded dynamic event reversely. Click  to search the appointed video. Users can select the forward search mode fast play at 2x, 4x or 8x speed. Click once to fast play the video at 2x. Click twice to fast play the video at 4x. Click 3 times to fast play the video at 8x. Click the same button to cycle through different fast play modes. The following picture shows the video is played at 8X.




There are four fast play modes: X0, X2, X4 and X8. “2004-02-04 17:59:56 X8” means the record is played at X8.

- Click  to see a forward static play. To see a backward static display, click .
- Click  to pause the playing.
- Click  to stop the video.


Catch Images and Video

WB-DVR Playback Application provides functions to output both dynamic and static images. Users can easily catch a static screen and save it as a BMP file, or save some fragment of recorded video as an AVI file.

Snapshot



Click  to save the desired screen as a BMP file. Users can keep a full-screen snapshot or a quad screen snapshot. This function allows to preserve static images.

Print

Click  to print the screen. Users can switch to a specific channel and print out the image during the surveillance. Printing is allowed in a display of full-screen mode or quad mode.

AVI Files

Users can backup or catch the data in DVR unit's hard disks by saving the recorded video as AVI files and play the files by Windows Media Player.

Click  to save an appointed surveillance video. After clicking the icon, a window shows to request the file name and directory. Click **Save** to start the recording. Click  again to finish the recording. EB-1004 BAK allows user to backup data in its master hard disk through a USB cable.

To backup the data in DVR unit's slave hard disk, please insert the removable hard disk bay to your PC and save the files as AVI files.

Warranty Notice

LIMITED WARRANTY

AVerMedia TECHNOLOGIES, Inc. warrants this product to be free of defects resulting from faulty manufacture or components under the following terms:

WARRANTY LENGTH

Labor is warranted for (1) one year from the date of purchase.

Parts are warranted for (1) one year from the date of purchase.

Replacement products will be warranted for the remainder of the one year warranty period or (30) thirty days, whichever is longer.

WHO IS PROTECTED

This warranty is enforceable only by the first consumer purchaser.

WHAT IS AND IS NOT COVERED

Except as specified below, this warranty covers all defects resulting from faulty manufacturing of this product. The following are not covered by the warranty.

1. Any product on which the serial number has been defaced, modified, or removed.
2. Damage, deterioration, or malfunction resulting from :
 - A. Accident, abuse, misuse, neglect, fire, water, lightning, or other acts of nature, commercial or industrial use, unauthorized product modification, or failure to follow instructions included with the product.
 - B. Misapplication of service by someone other than the manufacturer's representative.
 - C. Any shipment damages. (Claims must be made with carrier.)
 - D. Any other cause which does not relate to a product defect.
3. Cartons, cases, batteries, cabinets, tapes, or accessories used with product.
4. AVerMedia does not warrant that this product will meet your requirements; it is your responsibility to determine the suitability of this product for your purpose.

WHAT WE WILL AND WILL NOT PAY FOR

We will pay labor and material expenses for covered items. However, we will not pay for the following :

1. Removal or installation charges.
2. Shipping charges.
3. Any incidental charges.

EXCLUSION OF DAMAGES

THE MANUFACTURER'S SOLE OBLIGATION AND LIABILITY UNDER THIS WARRANTY IS LIMITED TO THE REPAIR OR REPLACEMENT OF A DEFECTIVE PRODUCT AT OUR OPTION. THE MANUFACTURER SHALL NOT, IN ANY EVENT, BE LIABLE TO THE PURCHASER OR ANY THIRD PARTY FOR ANY INCIDENTAL OR CONSEQUENTIAL DAMAGE (INCLUDING, BUT NOT LIMITED TO, DAMAGES RESULTING FROM INTERRUPTION OF SERVICE AND LOSS OF BUSINESS) OR LIABILITY IN TORT RELATING TO THIS PRODUCT OR RESULTING FROM ITS USE OR POSSESSION.

LIMITATIONS OF IMPLIED WARRANTIES

There are no other oral or written warranties, expressed or implied, including but not limited to those of merchantability or fitness for a particular purpose. Any implied warranties are limited in duration to one year from the date of purchase.

STATE LAW AND YOUR WARRANTY

This warranty gives you specific legal rights, and you may also have other rights granted under state law. These rights vary from state to state.

CONTACT INFORMATION

<http://www.avermedia.com>

Free Manuals Download Website

<http://myh66.com>

<http://usermanuals.us>

<http://www.somanuals.com>

<http://www.4manuals.cc>

<http://www.manual-lib.com>

<http://www.404manual.com>

<http://www.luxmanual.com>

<http://aubethermostatmanual.com>

Golf course search by state

<http://golfingnear.com>

Email search by domain

<http://emailbydomain.com>

Auto manuals search

<http://auto.somanuals.com>

TV manuals search

<http://tv.somanuals.com>