



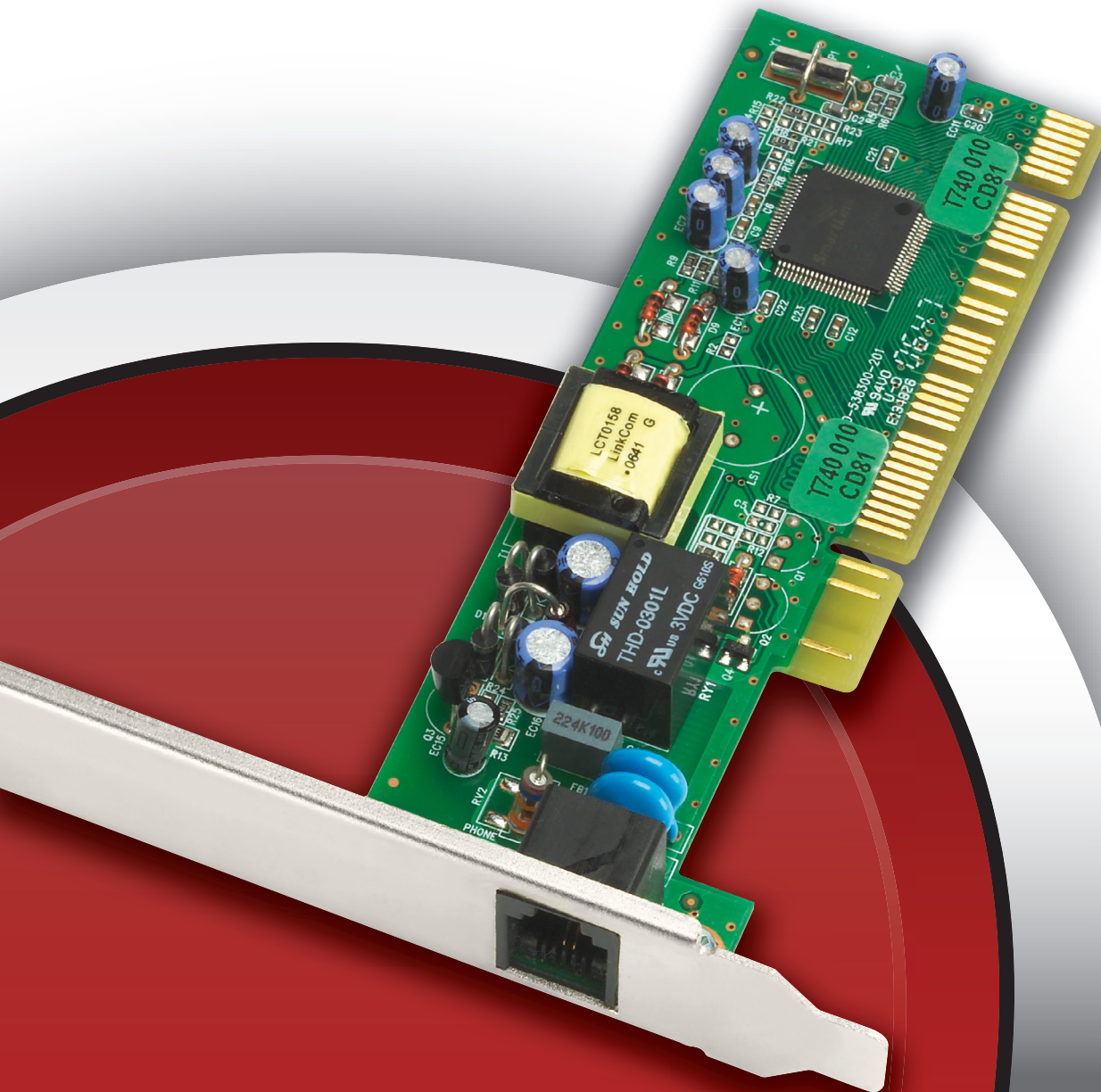
# Atlantis Land

## WebRunner PCI

V.90/V.92 56K Modem

**A01-PP4R**

- Modem PCI 56K V.90/V.92
- Plug'n'Play
- Consente l'invio/ricezione di fax (G3) sino a 14.400 bps



[www.atlantis-land.com](http://www.atlantis-land.com)

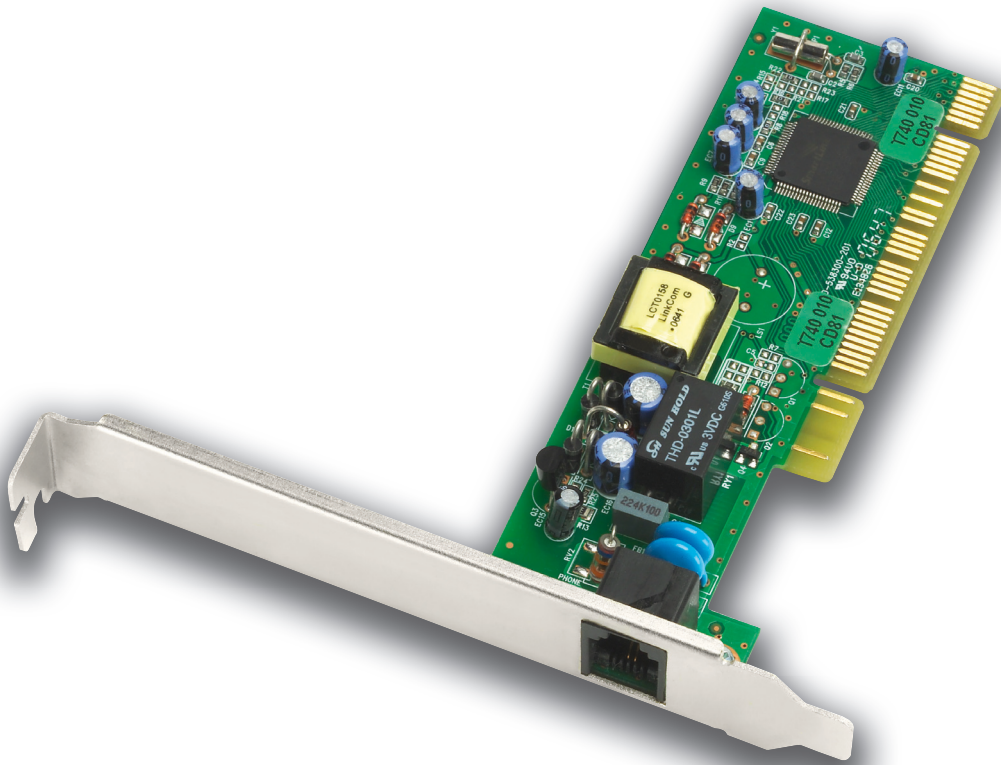


Atlantis Land

# WebRunner PCI

V.90/V.92 56K Modem

- WebRunner PCI è un Modem PSTN semplice da installare, facile da usare e veloce nella connessione. Lo standard V.92 consente una connessione rapida ignorando alcuni passaggi della sequenza di training e stabilendo la connessione più velocemente. Permette inoltre una comunicazione in upstream fino a 48Kbps. Il protocollo V.44 migliora la compressione dati fino al 30%, diminuendo i tempi di attesa.



## Specifiche Tecniche

### Modem Features

- 32-bit PCI V2.2 Interface
- ITU-T V.92\* Data/Fax modem
- Quick Connect, Modem-on-Hold \*\* and 48Kbps PCM upstream supported for ITU-T V.92
- Soft ring detection
- Call Progress Monitoring feature thru soft audio (No buzzer required)
- 4KV Surge Isolation

### Chipset Solutions

- Based on Conexant SL2801 solution based on Discrete DAA configuration

### Data Mode Features

- 56Kbps Internet connectivity via ITU/TIA V.92/V.90 standard
- V.8 and V.8bis support
- Backward compatible to V.34bis and lower speed

### Data Modem Standard

- V.90/V.92: 56Kbps
- V.34bis: 33.6Kbps
- V.34: 28.8Kbps
- V.32bis: 14.4Kbps
- V.32, V.23, V.22bis, V.22
- Bell 103 and Bell 212A

### Data Compression

- V.44
- V.42bis, MNP 5

### Error Correction

- V.42, LAPM, MNP 2-4

### Fax Modulations

- V.17: 14.4Kbps
- V.29: 9,600 bps
- V.27ter :4,800 bps

### Fax Control / Protocol

- Class 1, V.21 Channel 2
- Group 3 fax mode

### Drivers Support

- Windows® 98SE, Windows® 2000, Windows® Millennium, Windows® XP
- Windows Vista 32™

### NETWAITING™

- Accept call and put modem on hold, or reject call and continue Internet session (V.92 only)
- Allow the user to place outgoing calls by putting the modem on hold if an Internet connection is engaged (V.92 only)

### Physical And Environmental

- Storage Temperature: -10~50°C
- Operating Temperature: 5~40°C
- Humidity: 20% - 85% RH, no condensation
- Dimensions: 115 mm x 40 mm (without bracket)
- Weight: 50 g

### Minimum System Requirements

- Pentium® MMX 233MHz with 128MB RAM for Windows® 2000 / Windows® XP
- 32-bit PCI 2.2 Interface
- CDROM Drive
- 10MB available hard disk space (system files and modem drivers only)

### Package Contents

- WebRunner PCI V.90/V.92 56K Modem
- Installation CD with Driver, Manuals and Net-Waiting
- Telephone Extension Cable RJ-11
- Quick Start Manual

### Codice Ean

8026974001081

\* V.92 feature is subjected to ISP support

\*\* requires software application support

All rights registered

Microsoft and Windows are registered trademarks of Microsoft Corporation

All trade names and marks are registered trademarks of respective companies

Specifications are subjected to change without prior notice. No liability for technical errors and/or omissions

Telephone line conditions may limit your ability to connect at the highest speed

All rights registered

Microsoft and Windows are registered trademarks of Microsoft Corporation

All trade names and marks are registered trademarks of respective companies

Specifications are subjected to change without prior notice. No liability for technical errors and/or omissions

Network conditions and environmental factors, including volume of network traffic, building materials and construction, and network overhead, lower actual data throughput rate.

Environmental factors will adversely affect wireless signal range.

## Free Manuals Download Website

<http://myh66.com>

<http://usermanuals.us>

<http://www.somanuals.com>

<http://www.4manuals.cc>

<http://www.manual-lib.com>

<http://www.404manual.com>

<http://www.luxmanual.com>

<http://aubethermostatmanual.com>

Golf course search by state

<http://golfingnear.com>

Email search by domain

<http://emailbydomain.com>

Auto manuals search

<http://auto.somanuals.com>

TV manuals search

<http://tv.somanuals.com>