



Wireless 108Mbps Multi-Function Access Point

A02-WAP-54G



MANUAL

A02-WAP-54G(V1.1) _ME01

Where solutions begin



Where solutions begin



INDEX

CHAPTER 1: INTRODUCTION	1
1.1 An Overview of the del Wireless 108Mbps Multi-Function Access Point	1
1.2 Package Contents	2
1.3 Wireless Multi-Function Access Point Features	2
1.4 System Requirements	3
1.5 Setup	3
1.6 Location	4
CHAPTER 2: USING WIRELESS ACCESS POINT	5
2.1 Cautions for using the Wireless Access Point	5
2.2 The Front LEDs	6
2.3 The Rear Ports	6
2.4 Cabling	7
CHAPTER 3: CONFIGURATION	8
3.1 Before Configuration	8
3.1.1 Windows 95/98/ME	9
3.1.2 Windows NT4.0	10
3.1.3 Windows 2000	11
3.1.4 Windows XP	12
3.1.5 Windows Vista	13
3.2 Default Settings	13
3.2.1 Password	13
3.2.2 LAN WLAN	13
3.3 Accessing the Access Point Web Configurator	14
3.3.1 Navigating the Access Point Web Configurator	15
3.4 Wizard	16
Quick Wizard Setup	16
3.5 Status	21
3.6 Basic Setting	22
3.6.1 Authentication	24
3.7 IP Setting	26
3.8 Advanced Setting	27



Wireless 108Mbps Multi-Function Access Point

3.8.1	AP Mode	29
3.8.2	AP Client Mode	30
3.8.3	Wireless Bridge / Multiple Bridge	31
3.8.4	Repeat Mode	33
3.9	Security	34
3.10	Tools	36
APPENDIX A: TROUBLESHOOTING		38
A.1	Using LEDs to Diagnose Problems	38
A.1.1	LED Power	38
A.1.2	LED LAN	38
A.1.3	LED WLAN	39
A.2	WEB	39
A.3	Login	39
A.4	FAQ	41
APPENDIX B: TECHNICAL FEATURES		45
APPENDIX C: SUPPORT		46
A02-WAP-54G(V1.1)_ME01 (V1.0 May 2007)		



Copyright Statement

No part of this publication may be reproduced, stored in a retrieval system, or transmitted in any form or by any means, whether electronic, mechanical, photocopying, recording or otherwise without the prior writing of the publisher. Windows™ 98SE/2000/ME/XP are trademarks of Microsoft® Corp. Pentium is trademark of Intel. All copyright reserved.

The Atlantis Land logo is a registered trademark of Atlantis Land SpA. All other names mentioned may be trademarks or registered trademarks of their respective owners. Subject to change without notice. No liability for technical errors and/or omissions.

Wireless LAN, Health and Authorization for use

Radio frequency electromagnetic energy is emitted from Wireless LAN devices. The energy levels of these emissions however are far much less than the electromagnetic energy emissions from wireless devices like for example mobile phones. Wireless LAN devices are safe for use frequency safety standards and recommendations. The use of Wireless LAN devices may be restricted in some situations or environments for example:

- On board of airplanes, or
- In an explosive environment, or
- In case the interference risk to other devices or services is perceived or identified as harmful

In case the policy regarding the use of Wireless LAN devices in specific organizations or environments (e.g. airports, hospitals, chemical/oil/gas industrial plants, private buildings etc.) is not clear, please ask for authorization to use these devices prior to operating the equipment.

Regulatory Information/disclaimers

Installation and use of this Wireless LAN device must be in strict accordance with the instructions included in the user documentation provided with the product. Any changes or modifications made to this device that are not expressly approved by the manufacturer may void the user's authority to operate the equipment. The Manufacturer is not responsible for any radio or television interference caused by unauthorized modification of this device, of the substitution or attachment. Manufacturer and its authorized resellers or distributors will assume no liability for any damage or violation of government regulations arising from failing to comply with these guidelines.



Wireless 108Mbps Multi-Function Access Point

CE Mark Warning

This is a Class B product. In a domestic environment, this product may cause radio interference, in which case the user may be required to take adequate measures.

CE in which Countries where the product may be used freely:

Germany, UK, Italy, Spain, Belgium, Netherlands, Portugal, Greece, Ireland, Denmark, Luxembourg, Austria, Finland, Sweden, Norway and Iceland.

France: except the channel 10 through 13, law prohibits the use of other channels.

Federal Communication Commission Interference Statement

This equipment has been tested and found to comply with the limits for a Class B digital device, pursuant to Part 15 of the FCC Rules. These limits are designed to provide reasonable protection against harmful interference in a residential installation.

This equipment generates, uses and can radiate radio frequency energy and, if not installed and used in accordance with the instructions, may cause harmful interference to radio communications. However, there is no guarantee that interference will not occur in a particular installation. If this equipment does cause harmful interference to radio or television reception, which can be determined by turning the equipment off and on, the user is encouraged to try to correct the interference by one of the following measures:

- Reorient or relocate the receiving antenna.
- Increase the separation between the equipment and receiver.
- Connect the equipment into an outlet on a circuit different from that to which the receiver is connected.
- Consult the dealer or an experienced radio/TV technician for help.

FCC Caution: To assure continued compliance, (example - use only shielded interface cables when connecting to computer or peripheral devices) any changes or modifications not expressly approved by the party responsible for compliance could void the user's authority to operate this equipment.

This device complies with Part 15 of the FCC Rules. Operation is subject to the following two conditions:

- 1) This device may not cause harmful interference, and



Wireless 108Mbps Multi-Function Access Point

- 2) This device must accept any interference received, including interference that may cause undesired operation.



CHAPTER 1: Introduction

Congratulations on your purchase of this IEEE 802.11g Wireless LAN Access Point. This manual helps to features the innovating wireless technology that can help you build a wireless network easily! This manual contains detailed instructions in operation of this product. Please keep this manual for future reference.

With a WLAN (IEEE 802.11g) Access Point, a mobile computer can share data with another mobile computer in a wireless way. Easy-to-use utilities are bundled with WLAN Access Point for configuration and monitoring purposes.

WLAN networking can wirelessly transmit and receive data, minimizing the need for wired connections, at a speed of up to Fifty-four megabit per second. With WLAN networking, you can locate your PC wherever you want without wires and cables.

WLAN networking provides users with an access to real-time information anywhere in their organization. The mobility provides productivity and service, which are not available under wired networks.

1.1 An Overview of the del Wireless 108Mbps Multi-Function Access Point

The device for a total freedom of movement without losing the connection. Easy to be installed and fast and flexible, with Wireless Multi-Function Access Point there is no more obligation for a fixed working place: you can easily work or navigate for fun from your own garden or in different rooms of your office, always in wireless connection.

The Roaming function gives you a complete freedom of movement and two or more Wireless Multi-Function Access Point can serve wireless also large headquarters.

A pair of Wireless Multi-Function APs operating under Bridge mode to act as the bridge that connect two Ethernet networks or Ethernet enabled clients together. Repeat Mode is able to extend the effective range and coverage of the wireless network. Last but not least the AP will be a wireless Ethernet adapter transforms any Ethernet-enabled devices to have the wireless function.

Thanks to advanced security functions which are integrated and thanks to the throughput of the protocol IEE802.11G you are going to have a fast and flexible wireless net, hacker safe.

The chipsets fully support Wi-Fi Protected Access (WPA/WPA2) and the IEEE802.11i draft security standards in hardware and high-speed encryption engines with no performance degradation.



Last, but not least, this product implements Atheros Super G™ (available for devices with chipset Atheros) capabilities to deliver 108 Mbps raw data rates for 802.11g wireless LANs.

1.2 Package Contents

Unpack the package and check all the items carefully. If any item contained is damaged or missing, please contact your local dealer as soon as possible. Also, keep the box and packing materials in case you need to ship the unit in the future. The package should contain the following items:

- Wireless 108Mbps Multi-Function Access Point
- 2 dBi Antenna
- CD Rom with online manual
- Quick Start Guide (English, French, Italian)
- AC/DC power adapter (5 V, 1A)

1.3 Wireless Multi-Function Access Point Features

Wireless Multi-Function Access Point provides the following features:

- **IEEE 802.11g and IEEE 802.11b:** With built-in 802.11g access point for extending the communication media to WLAN while providing the WEP and WPA for securing your wireless networks.
- **SuperG™:** This product implements Atheros Super G™ (available for devices with chipset Atheros) capabilities to deliver 108 Mbps raw data rates for 802.11g wireless LANs.
- **Wi-Fi Protected Access (WPA) and WEP encryption:** Thanks to advanced security functions which are integrated and thanks to the throughput of the protocol IEEE802.11G you are going to have a fast and flexible wireless net, hacker safe. The chipsets fully support Wi-Fi Protected Access (WPA) and the IEEE 802.11i draft security standards in hardware and high-speed encryption engines with no performance degradation.
- **Wireless Bridge:** A pair of Wireless Multi-Function APs operating under Bridge mode to act as the bridge that connect two Ethernet networks or Ethernet enabled clients together.
- **Repeater:** Repeat Mode is able to extend the effective range and coverage of the wireless network.
- **Client Wireless:** the AP will be a wireless Ethernet adapter transforms any Ethernet-enabled devices to have the wireless function.



Wireless 108Mbps Multi-Function Access Point

- **1 Antenna:** 1 x 2 dBi Dipole detachable Antenna1 (SMA)
- **1 port Fast Ethernet:** A fast Ethernet 10/100Mbps port is supported in the LAN site and automatic switching between MDI and MDI-X for 10Base-T and 100Base-TX ports is supported. An Ethernet straight or cross-over cable can be used directly, this fast Ethernet switch will detect it automatically.
- **Mac Filtering (ACL):** Access Control function allows clients whose MAC addresses in the list will be able to connect to this Access Point.
- **Web based GUI:** supports web based GUI for configuration and management. It is user-friendly with an on-line help, providing necessary information and assist user timing. It also supports remote management capability for remote users to configure and manage this product.
- **Firmware Upgrade:** the device can be upgraded to the latest firmware through the WEB based GUI.

1.4 System Requirements

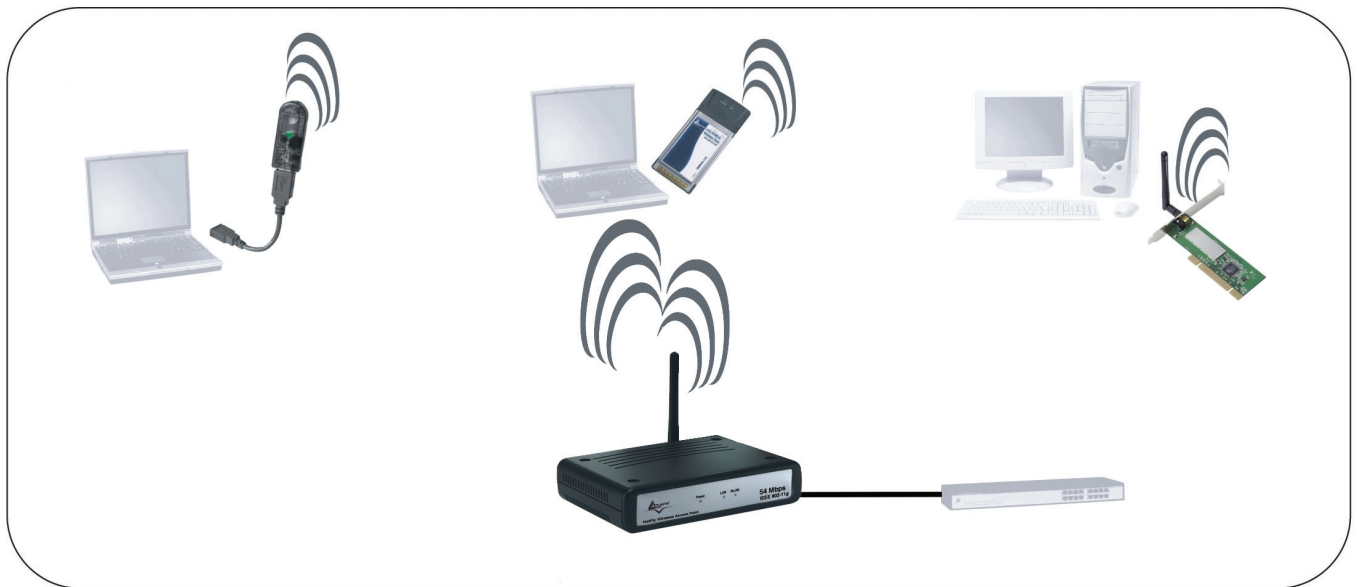
Before installing the device, your PC should meet the following:

- Intel® Pentium®III 600Mhz or compatible processor with TCP/IP stack
- Internet Explorer V6.0 on Netscape V6.0
- CDRom

1.5 Setup

The setup of the Wireless Access Point can be performed using the following steps:

- Visually inspect the Ethernet RJ45 port connector and make sure that it is fully plugged in to the system's Ethernet switch/hub port.
- Fix the direction of the antennas. Try to place the AP in a position that can best cover your wireless network. Normally, the higher you place the antenna, the better the performance will be. The antenna's position enhances the receiving sensitivity.
- Visually inspect if the Power Adapter was fully plugged to the device power jack.



1.6 Location

Locate an optimum location for the Wireless LAN Access Point (AP). The best place for your AP is usually the center of your wireless network, with line of sight to all of your mobile stations.

Try to place the AP in a position that can best cover your wireless network. Normally, the higher you place the antenna, the better the performance will be. The antenna's position enhances the receiving sensitivity.



CHAPTER 2: Using Wireless Access Point

2.1 Cautions for using the Wireless Access Point

- Do not place the Wireless Access Point under high humidity and high temperature.
- Do not use the same power source for Wireless Access Point with other equipment.
- Do not open or repair the case yourself. If the Wireless Access Point is too hot, turn off the power immediately and have a qualified serviceman repair it.
- Place the Wireless Access Point on a stable surface.
- Only use the power adapter that comes with the package.
- Do NOT upgrade firmware on any Atlantis Land product over a wireless connection. Failure of the device may result. Use only hard-wired network connections.



2.2 The Front LEDs



The table below shows the LED Indicator of the Wireless Access Point.

LED	Meaning
POWER	This indicator lights green when the Access Point receives power. Otherwise, it turns off.
WLAN	The indicator blinking green whiles the wireless LAN activity.
LAN	The indicator lights green when the LAN port is connected to a Ethernet network successful. Otherwise, the indicator blinking green while transmitting or receiving data on the Ethernet network.

2.3 The Rear Ports

The figure below shows the rear panel of the Wireless Access Point.



Port	Meaning
ANTENNA	One external dipole antenna.
RESET	The Reset function is to reset the setting back to factory default setting, once you press the "RESET" button more than 10 seconds.
LAN	Ethernet port with 10/100Mbps Fast Ethernet connections, connect this port to switch/hub.
POWER	Connect the Power Adapter DC plug to the AP's power jack.



2.4 Cabling

Connect to the Switch/Hub

- Plug in one end of the RJ45 network cable to the Switch/Hub port
- Plug in the other end of the RJ45 network cable to the Wireless Access Point

Check the installation

The LEDs of the Access Point are clearly visible and the status of the network link can be seen instantly:

- With the power source on, once the device is connected, the Power, LAN and WLAN port LEDs will light up indicating a normal status.
- If the LAN Port's Link indicator does not light up then check the RJ-45 cable if it is firmly feed to the RJ45 port, while the LAN is link up to the Switch/Hub, the LAN port's LED will light up.

CHAPTER 3: Configuration

The Wireless Access Point has a Web GUI interface for the configuration. The AP can be configured through the Web Browser. A network manager can manage, control and monitor the AP from the local LAN. This section indicates how to configure the AP to enable its functions.

3.1 Before Configuration

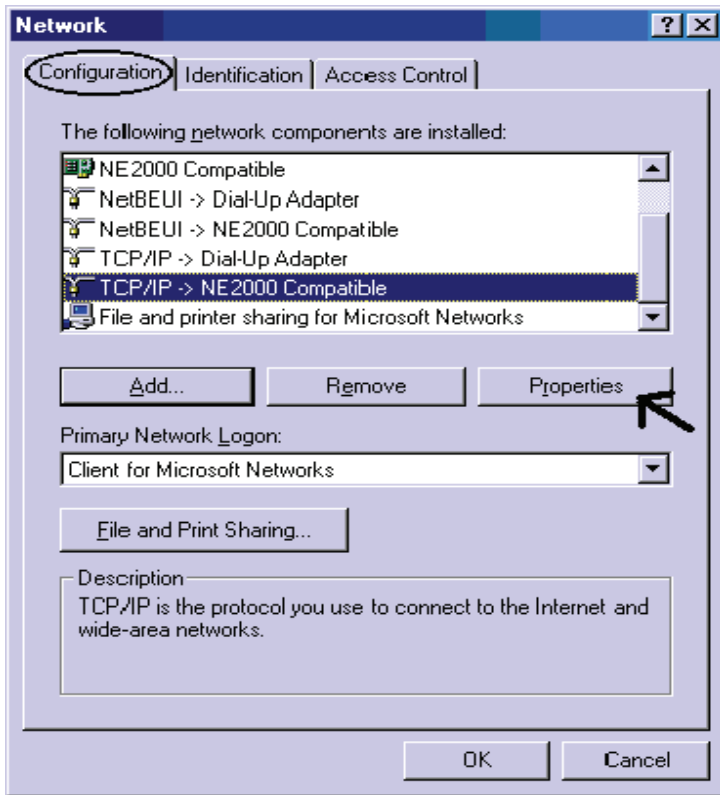
This section describes the configuration required by LAN-attached PCs that communicate with the Wireless Access Point, either to configure the device or for network access. These PCs must have an Ethernet interface (or wireless adapter) installed properly, be connected to the Wireless Access Point either directly or through an external repeater hub or by wireless, and have TCP/IP installed and configured with a fixed IP address that must be in the same subnet of the Wireless Access Point. The default IP address of the Wireless Access Point is 192.168.1.1 and subnet mask is 255.255.255.0.

Please follow the steps below for PC's network environment installation. First of all, please check your PC's network components. The TCP/IP protocol stack and Ethernet network adapter must be installed. If not, please refer to MS Windows related manuals.

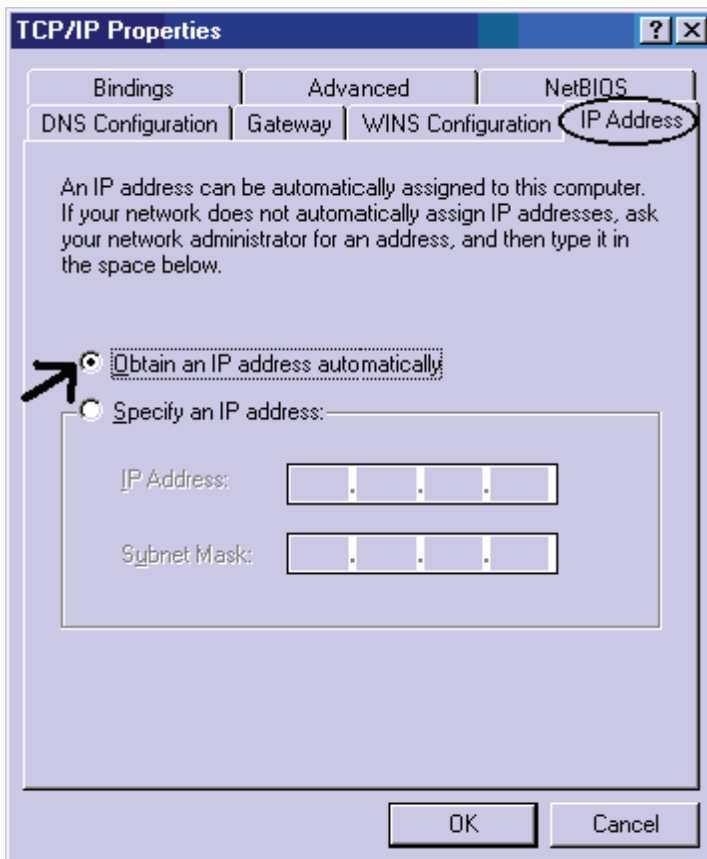


Any TCP/IP capable workstation can be used to communicate with or through the Wireless Access Point to configure other types of workstations, please consult the manufacturer's documentation.

3.1.1 Windows 95/98/ME

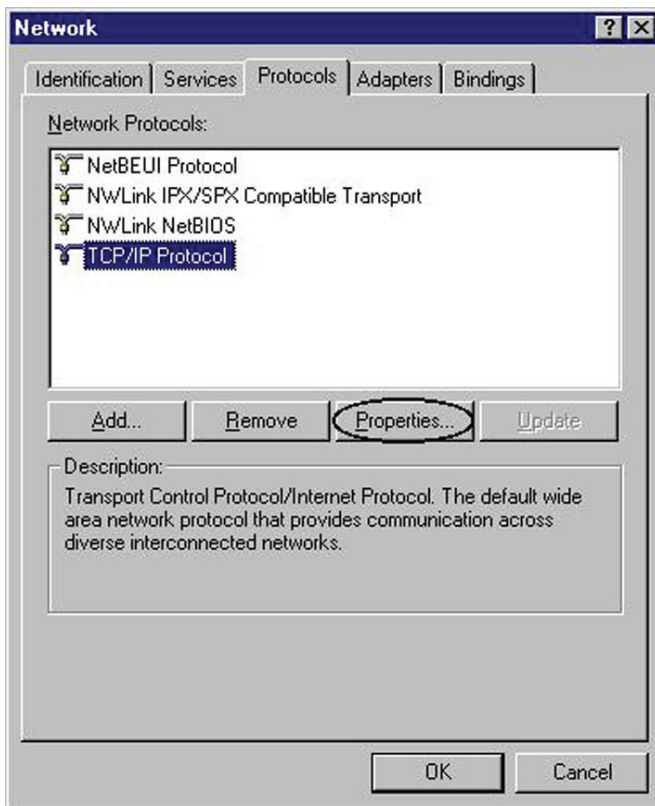


1. Go to **Start / Settings / Control Panel**. In the Control Panel, double-click on **Network** and choose the **Configuration** tab.
2. Select **TCP / IP -> NE2000 Compatible**, or the name of any Network Interface Card (NIC) in your PC.
3. Click **Properties**.



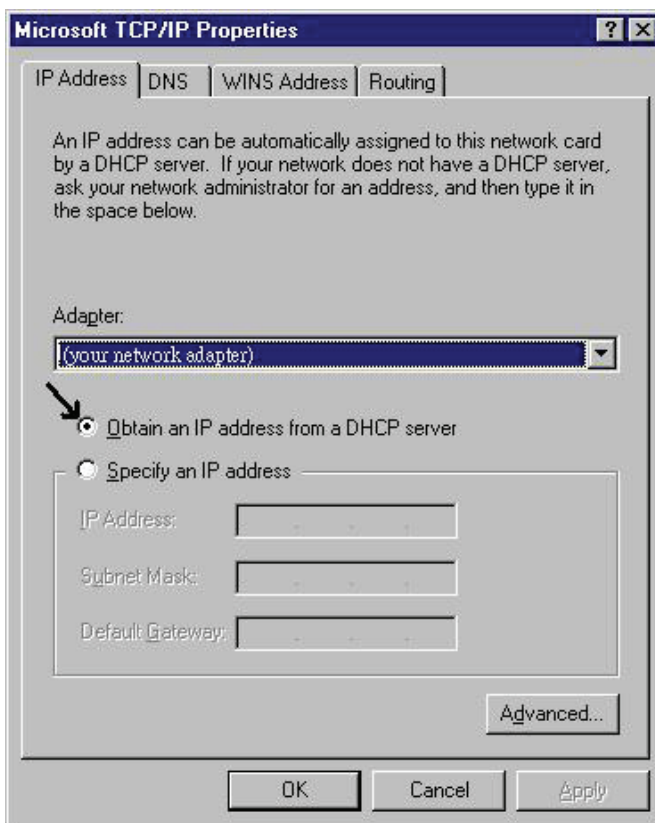
4. Select the **IP Address** tab. In this page, click the **Specify an IP address** radio button (EG IP=192.168.1.2 and subnet Mask=255.255.255.0).

3.1.2 Windows NT4.0

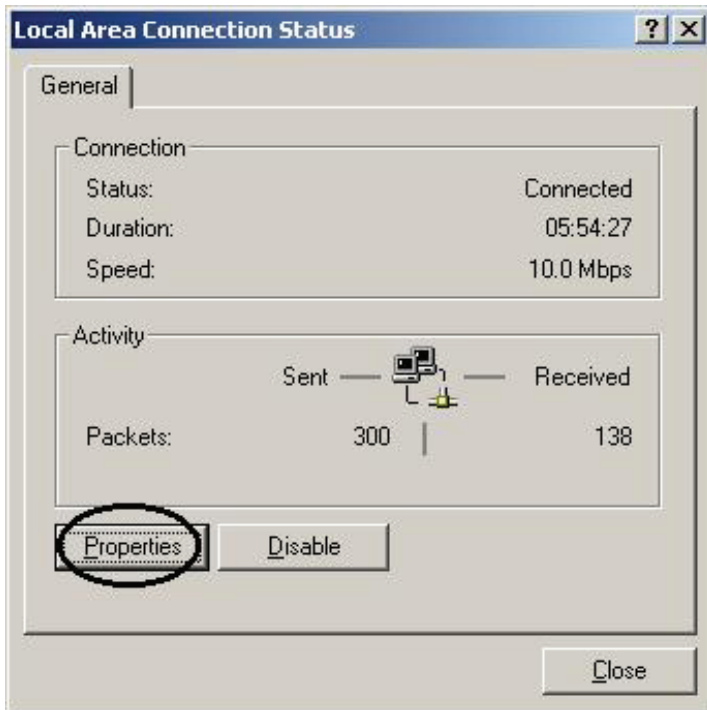


1. Go to **Start / Settings / Control Panel**. In the Control Panel, double-click on **Network** and choose the **Protocols** tab.
2. Select **TCP/IP Protocol** and click **Properties**.

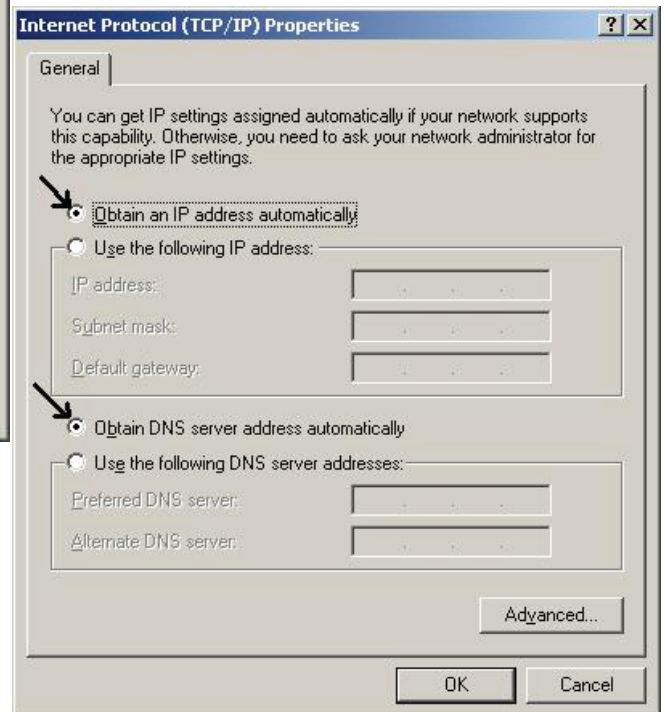
3. Select the **IP Address** tab. In this page, click the **Specify an IP address** radio button (EG IP=192.168.1.2 and subnet Mask=255.255.255.0).



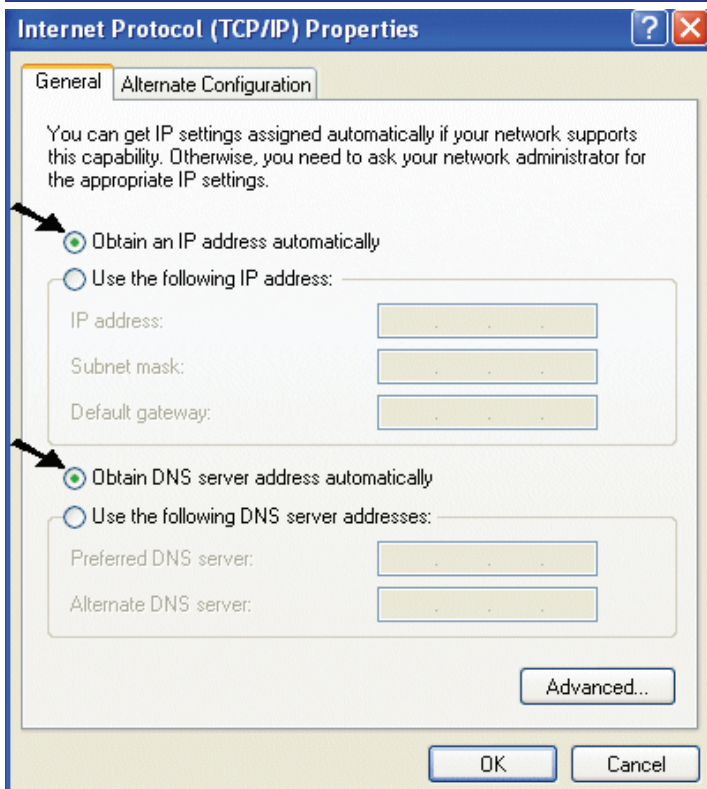
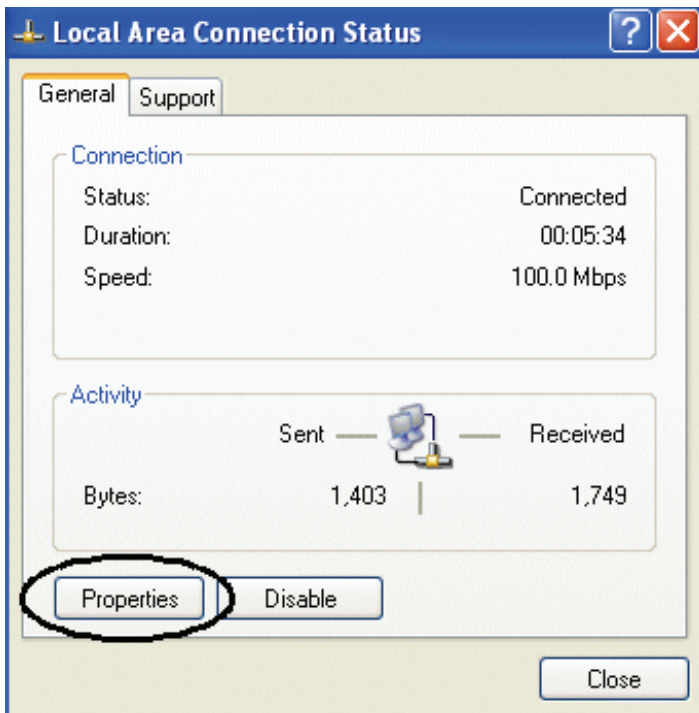
3.1.3 Windows 2000



1. Go to Start / Settings / Control Panel. In the Control Panel, double-click on Network and Dial-up Connections.
2. Double-click **LAN Area Connection**.
3. In the **LAN Area Connection Status** window, click **Properties**.
4. Select **Internet Protocol (TCP/IP)** and click **Properties**.
5. Select **Use the Following IP Address** (EG IP=192.168.1.2 and subnet Mask=255.255.255.0).
6. Click "OK" to finish the configuration.



3.1.4 Windows XP



1. Go to **Start / Control Panel** (in Classic View). In the Control Panel, double-click on **Network Connections**.
2. Double-click **Local Area Connection**
3. In the LAN Area Connection Status window, click Properties.
4. Select **Internet Protocol (TCP/IP)** and click **Properties**.
5. Select the **Use the following IP address** radio buttons (EG IP=192.168.1.2 and subnet Mask=255.255.255.0).
6. Click **“OK”** to finish the configuration.



3.1.5 Windows Vista

1. Go to **Start / Control Panel (in Classic View)**. In the Control Panel, double-click on **Network and Sharing Center**.
2. Click **Manage network connections** then double click on **Local Area Connection**.
3. Click **Continue** (Windows needs your permission to continue).
4. Select **Internet Protocol Version 4(TCP/IPv4)** and click **Properties**
5. Select the **Use the following IP address** radio buttons (EG IP=192.168.1.2 and subnet Mask=255.255.255.0).
6. Click **OK** to finish the configuration

3.2 Default Settings

Before configuring the Wireless AP through WLAN, make sure that the SSID, Channel and the WEP was set properly.

The default setting of the Wireless AP that you will use:

- User: **admin**
- Password: **admin**
- IP Address: **192.168.1.1**
- Subnet Mask: **255.255.255.0**
- Wep Encryption: **disable**
- SSSID: **default**
- Channel: **6**

3.2.1 Password

When there is a screen needs to enter the Network password, it means that there is a password settle, type in the password you entered before.

3.2.2 LAN WLAN

The parameters of LAN and WLAN ports are pre-set in the factory. The default values are shown below.

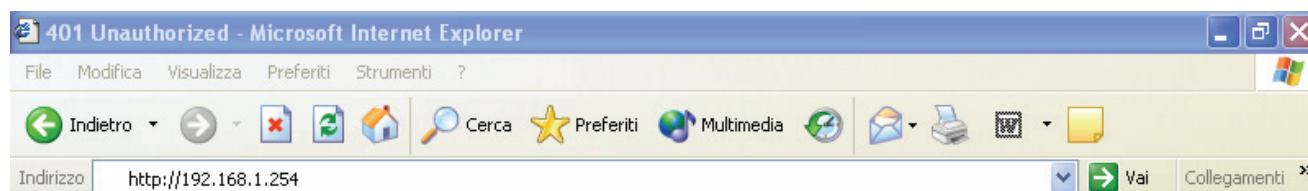
LAN		WLAN
IP address	192.168.1.1	Channel=6
Subnet Mask	255.255.255.0	SSID=default
		Encryption=none

3.3 Accessing the Access Point Web Configurator

Before you configure this device, note that when the AP is configured through an Ethernet connection, make sure the manager PC must be set on same the **IP network**. For example, when the default network address of the default IP address of the AP is **192.168.1.1**, then the manager PC should be set at 192.168.1.x (where x is a number between 2 and 254), and the default subnet mask is 255.255.255.0.

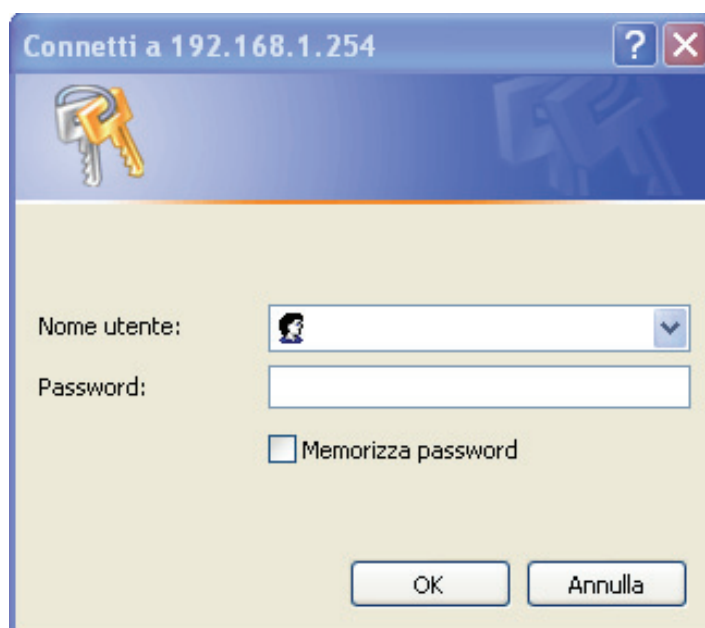
Open Internet Explorer 5.0 or above Web browser.

Enter IP address **http://192.168.1.1** (the factory-default IP address setting) to the address location.



When there is a screen needs to enter the User name and Password, both of the default Username and Password is **"admin"**.

Click **OK**.



The screen will show the station summary of the AP when you login to the AP.



3.3.1 Navigating the Access Point Web Configurator

The screen will show the status of the AP when you login to the AP. There are seven main functions included in the top side of the main screen:

- Wizard
- Status
- Basic Setting
- IP Setting
- Advanced Setting
- Security
- Tools

Point the selections in the top side of the menu screen.

Status

Firmware Version : 1.01 **Date :** Fri, 13 Apr 2007

LAN	MAC:	00-19-5b-43-29-50
	IP Address:	192.168.1.1
	Subnet Mask:	255.255.255.0
	Gateway:	192.168.1.254
	Send:	59
	Receive:	449

Wireless

SSID:	A02-AP2-W54M
Encryption :	128 bits
Channel:	6
Send:	17
Receive:	3518

Connection Time	Wireless Station
May/17/2007 10:53:07	00:0e:e8:f7:07:70



3.4 Wizard

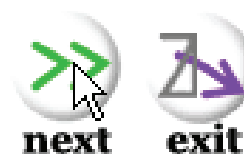
Quick Wizard Setup

The following screen will appear. Please click **Next** to continue. You also can go back to modify the setting by clicking **Back** (when available).



Welcome to the **108Mbps** Access Point Setup Wizard. The Wizard will direct you through these four quick steps. Start by clicking on **Next**.

- Step 1. Set your new password
- Step 2. Set the SSID and Channel
- Step 3. Set Encryption
- Step 4. Restart





Step 1: Set Password

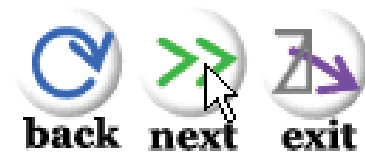
You can change the password as you like and then click **Next** to continue.



You may want to change the Administrator password of this Access Point to prevent authorized modification to the configuration settings. Enter your new password in the following text fields. Click Next to continue with setup or Exit to quit setup wizard.

■ Password

■ Verify Password





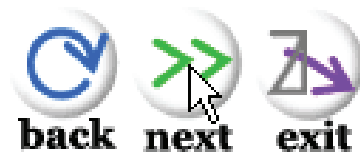
Step 2: Set Wireless LAN connection

Click **enable** to enable wireless LAN. If you enable the wireless LAN, type the SSID in the text box and select a communications channel. The SSID and channel must be the same as wireless devices attempting communication to the Access Point. Select a channel number and click on **Next**.



Enter the SSID of the wireless network, and select the frequency channel that this Access Point will operate in.
Click Next to continue setup, or Exit to quit setup wizard.

■ SSID	<input type="text" value="default"/>
■ Channel	<input type="text" value="6"/> ▼





Step 3: Set WEP Encryption

If user wants to enable WEP, please click **Enabled**. Then, select the key size of WEP encryption and enter the key value in the **key** text box. Please click **Next** to continue.



You may enable WEP security for data encryption by selecting Enabled. Select one of the WEP encryption key size and enter the value of the key in the text fields below. Click Next to continue with setup, or Exit to quit setup wizard.

<input checked="" type="checkbox"/> WEP	<input checked="" type="radio"/> Enabled <input type="radio"/> Disabled
<input checked="" type="checkbox"/> WEP encryption	128Bits <input type="button" value="v"/>
<input checked="" type="checkbox"/> Key	<input type="text" value=")000000000000000000000000000000"/>

Input 26 HEX characters(HEX is 0~9, A~F or a~f)





Step 4: Restart

The Setup wizard is now completed. The new settings will be effective after the Wireless 108Mbps Access Point restarted. Please click **Restart** (then **Close**) to reboot the Access Point. If you do not want to make any changes, please click **exit** to quit without any changes.



3.5 Status

This page as below shows the following information.

Firmware Version :	1.01	Date :	Fri, 13 Apr 2007
LAN MAC:	00-19-5b-43-29-50		
IP Address:	192.168.1.1		
Subnet Mask:	255.255.255.0		
Gateway:	192.168.1.254		
Send:	59		
Receive:	449		
Wireless			
SSID:	A02-AP2-W54M		
Encryption :	128 bits		
Channel:	6		
Send:	17		
Receive:	3518		
View Log			
Connection Time		Wireless Station	
May/17/2007 10:53:07		00:0e:e8:f7:07:70	

- **Firmware Version:** Shows the current firmware version and released date code.
- **LAN:** Shows the Mac address, IP address (default: 192.168.1.1), Subnet Mask, Gateway Address. The current LAN traffic calculated in terms of number of packets sent and received by AP through wired connection is also displayed.
- **Wireless:** Shows the Mac address, current SSID, the status of Encryption Function (Enable or Disable), the current using channel. The current wireless



Wireless 108Mbps Multi-Function Access Point

traffic calculated in terms of number of packets sent and received by AP through wireless communication is also displayed.

- **View Log:** Once clicked, the page will change to login page. The login page records every event and the time that it happens.

NOTE: User may clear the entries recorded in the log by clicking the **Clear Log** button, and refresh the screen to show the latest log entries by clicking the **Refresh** button.

3.6 Basic Setting

This is the page allow user to change the access point settings.

- **AP Name:** The name of the AP, which can be used to identify the Access Point among the all the Access Points in the wireless network.
- **SSID: Service Set Identifier,** which is a unique name shared among all clients and nodes in a wireless network. The SSID must be identical for each clients and nodes in the wireless network.

- **Channel:** The channel that AP will operate in. User can select the channel range from 1 to 11 for North America (FCC) domain, 1 to 13 for European (ETSI) domain and 1 to 14 for Japanese domain.
- **Extended Range:** When you enable this function, AP will reduce data rate with a long distance.
- **Authentication:** Please check next section.

The range of radio frequencies used by IEEE 802.11g wireless devices is called a “channel”. Channels available depend on your geographical area. You may have a choice of channels (for your region) so you should use a different channel than an adjacent AP (access point) to reduce interference. Interference occurs when radio signals from different access points overlap causing interference and degrading performance.

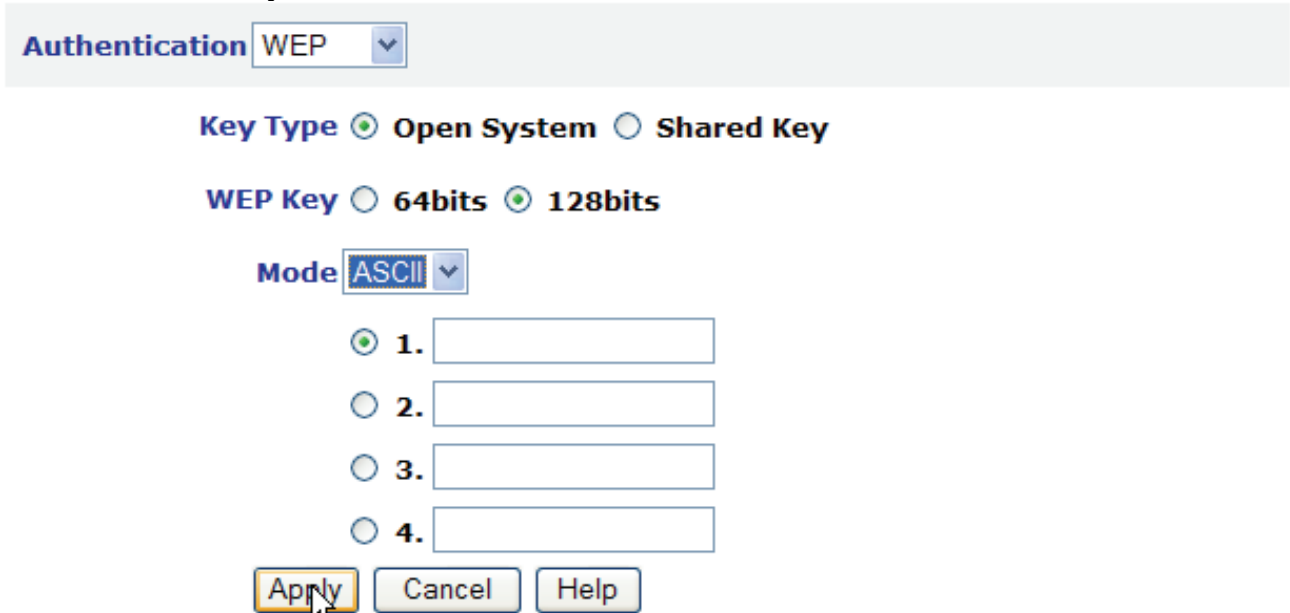


Adjacent channels partially overlap however. To avoid interference due to overlap, your AP should be on a channel at least five channels away from a channel that an adjacent AP is using. For example, if your region has 11 channels and an adjacent AP is using channel 1, then you need to select a channel between 6 or 11.

3.6.1 Authentication

Authentication Type: The authentication type default is set to Open system. There are 4 options: Disable, WEP, WPA and WPA2. All the nodes and hosts on the network must use the same authentication type.

- **WEP Key:** To disable WEP security, click on the “**Disable**” option. To enable WEP security, there are 2 types to select – 64bits and 128 bits. When it is selected, the key value must be entered in ASCII or HEX format.



The screenshot shows the WEP configuration interface. At the top, there is a dropdown menu for 'Authentication' set to 'WEP'. Below it, there are radio buttons for 'Key Type' with 'Open System' selected and 'Shared Key' unselected. Underneath, there are radio buttons for 'WEP Key' with '128bits' selected and '64bits' unselected. A 'Mode' dropdown menu is set to 'ASCII'. Below the mode menu, there are four numbered input fields (1, 2, 3, 4) for entering the WEP keys. At the bottom of the form, there are three buttons: 'Apply', 'Cancel', and 'Help'. A mouse cursor is pointing at the 'Apply' button.

* Enabling Extended Range will automatically disable "Super G with Static Turbo" and set "Tx Rates" auto.

Note: When the WEP security is enabled, all the wireless clients that wish to connect to the Access Point must also have WEP enabled with the identical WEP Key value entered.



WEP is not completely secure. If possible please use WPA-PSK.

- **WPA-PSK / WPA2-PSK:** If WPA-PSK or WPA2-PSK is selected, user needs to set the key in the passphrase field as the below screen. The key length should be 8 characters at least.



Wireless 108Mbps Multi-Function Access Point

Authentication **WPA** ▼

PSK / EAP PSK EAP

Passphrase

Confirmed Passphrase

Apply Cancel Help

* Enabling Extended Range will automatically disable "Super G with Static Turbo" and set "Tx Rates" auto.

- **WPA / WPA2(EAP):** If WPA or WPA2 is selected, the below screen is shown. Please set the length of the encryption key and the parameters for the RADIUS server.

1. **RADIUS Server 1:** Enter the IP address of and the Port used by the Primary Radius Server, enter the Shared Secret, which is used by the Radius Server.
2. **RADIUS Server 2(optional):** Enter the IP address of and the Port used by the Secondary Radius Server, enter the Shared Secret, which is used by the Radius Server.

Authentication **WPA** ▼

PSK / EAP PSK EAP

RADIUS Server 1 IP . . .

Port

Shared Secret

RADIUS Server 2 (optional) IP . . .

Port

Shared Secret

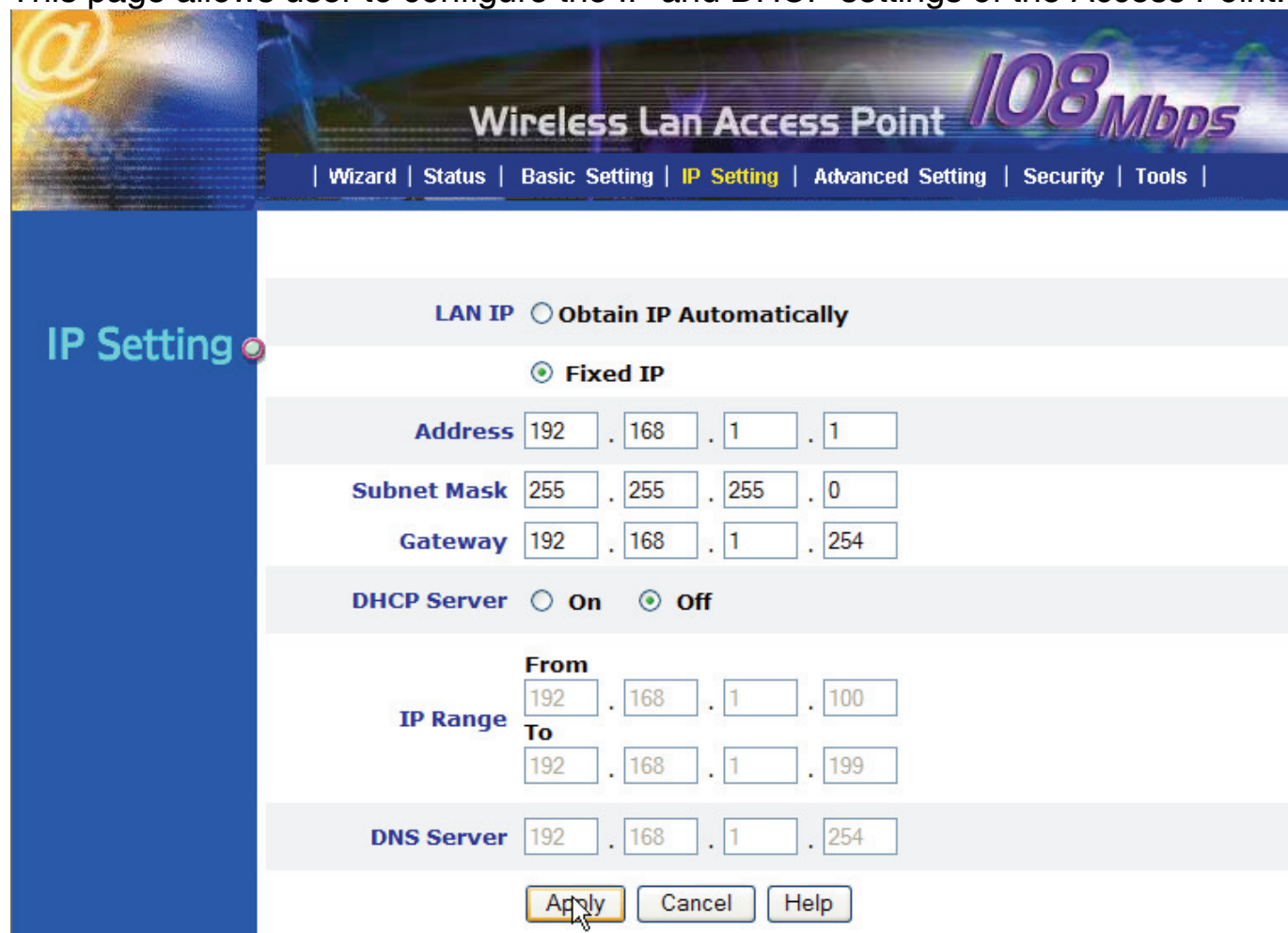
Apply Cancel Help

* Enabling Extended Range will automatically disable "Super G with Static Turbo" and set "Tx Rates" auto.

- **Apply:** For the changes made to any of the items above to be effective, click "Apply". The new settings are now been saved to Access Point and will be effective once the Access Point restarts.

3.7 IP Setting

This page allows user to configure the IP and DHCP settings of the Access Point.



Wireless Lan Access Point 108Mbps

| Wizard | Status | Basic Setting | IP Setting | Advanced Setting | Security | Tools |

LAN IP Obtain IP Automatically

Fixed IP

Address . . .

Subnet Mask . . .

Gateway . . .

DHCP Server On Off

IP Range

From . . .

To . . .

DNS Server . . .

The default IP address of this access point is 192.168.1.1 with the subnet mask of 255.255.255.0. User can type in other values for IP Address, Subnet Mask and Gateway and click “**Apply**” button for the changes to be effective.

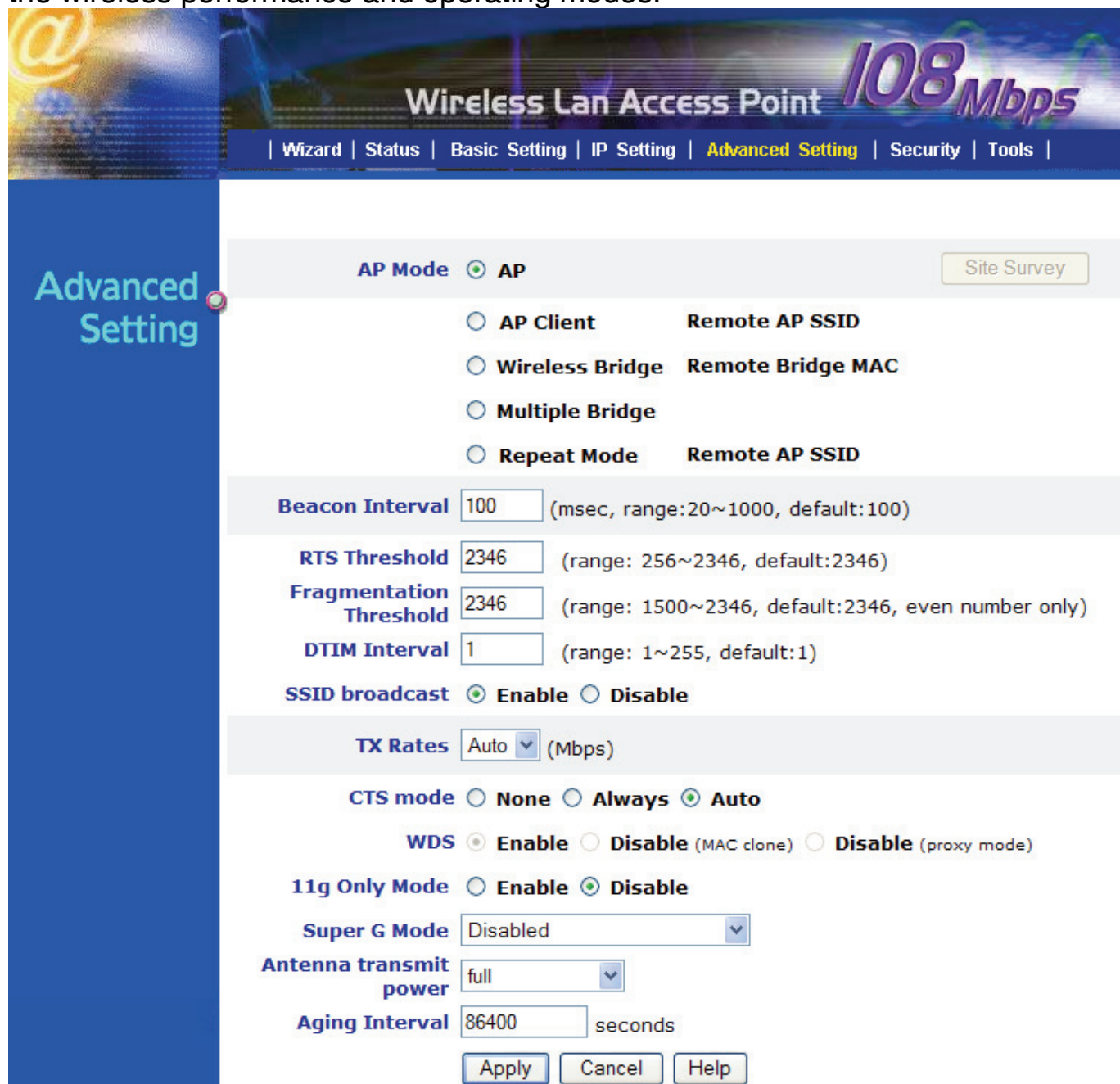
User can also set the Access Point to obtain the IP from a DHCP server, but it is not recommended. Select the option “Obtain IP Automatically” and click “**Apply**” button for the changes to be effective.

- **DHCP Server:** It is not recommended to enable the DHCP Server if user has a DHCP server running in LAN network because it probably will cause possible the conflict of IP assignment. Enable the DHCP server function by selecting the option “On”, and enter the IP range.
- **DNS Server:** Type up to DNS IP address in the text boxes. Your ISP will provide you with this information.

Click “**Apply**” for the changes to be effective.

3.8 Advanced Setting

This page contains configurations for advanced users, which the change reflects the wireless performance and operating modes.



Advanced Setting

AP Mode AP AP Client Wireless Bridge Multiple Bridge Repeat Mode Remote AP SSID Remote Bridge MAC Remote AP SSID

Site Survey

Beacon Interval (msec, range:20~1000, default:100)

RTS Threshold (range: 256~2346, default:2346)

Fragmentation Threshold (range: 1500~2346, default:2346, even number only)

DTIM Interval (range: 1~255, default:1)

SSID broadcast Enable Disable

TX Rates (Mbps)

CTS mode None Always Auto

WDS Enable Disable (MAC clone) Disable (proxy mode)

11g Only Mode Enable Disable

Super G Mode

Antenna transmit power

Aging Interval seconds

- **Beacon Interval:** To set the period of time in milliseconds that AP sends out a beacon. Default is 100 milliseconds.
- **RTS Threshold:** To set the size of RTS/CTS packet size. Default is 2346 bytes.
- **Fragmentation Threshold:** To set the number of bytes used for the fragmentation boundary for directed messages. Default is 2346 bytes.
- **DTIM Interval:** This value indicates the interval of the Delivery Traffic Indication Message (DTIM). A DTIM field is a countdown field informing clients of the next window for listening to broadcast and multicast messages.



When the access point has buffered broadcast or multicast messages for associated clients, it sends the next DTIM with a DTIM interval value. Access point clients hear the beacons and awaken to receive the broadcast and multicast messages.

- **SSID Broadcast:** While SSID Broadcast is enabled, all wireless clients will be able to communicate with the access point. For secure purpose, user may want to disable SSID broadcast to allow only those wireless clients with the AP SSID to communicate with the access point.
- **TX Rates:** Select one of the wireless communications transfer rates, measured in megabytes per second, based upon the speed of wireless adapters connected to the WLAN.
- **CTS Mode:**
 - **None:** Disable CTS function.
 - **Always:** Regardless of wireless environment (11b or 11g), platform will always transfer 11b packet.
 - **Auto:** AP soon detected the wireless environment and decided the transmission packet, either 11b or 11g.
- **11g Only Mode:** To setting the AP operation mode for 802.11g only or 802.11b/802.11g mix mode.
- **SuperG Mode:** From the drop list, if you like to use Super-GTM to enhance the speed, there are three options on Super-GTM mode: Super G without turbo; Super G with Dynamic turbo and Super G with Static turbo. The turbo mode indicates the combination of two channels to enhance the throughput. Super G without turbo indicates that it is on Super G mode without the channel's combination. Dynamic turbo is able to automatically detect if any 'Super-GTM based' product is available. If no, the connection is via 'normal' G. Static turbo means it will not go back to 'normal' G once it starts.
- **Antenna transmit power:** Adjust the power of the antenna transmission by selecting from the drop down list for full, half (-3dB), quarter (-6dB), eighth (-9dB) and min.
- **Agging Interval:** To limited STA connect timing.

3.8.1 AP Mode

Configure the AP to Access Point mode; with this mode, WLAN clients can access LAN or other WLAN clients through this AP.



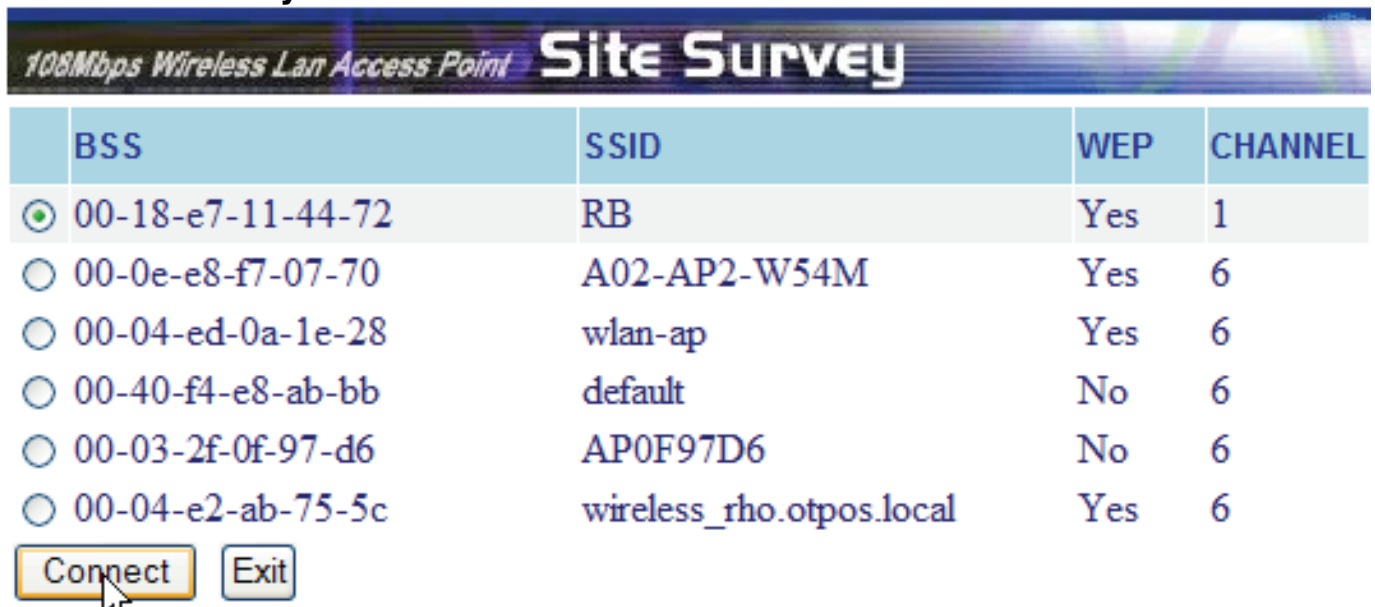
AP Mode: Select Access Point.

3.8.2 AP Client Mode

Configure the AP to AP Client mode; the AP will be a wireless Ethernet adapter transforms any Ethernet-enabled devices to have the wireless function.



AP Mode: Select AP Client.
Click **Site Survey**.



BSS	SSID	WEP	CHANNEL
<input checked="" type="radio"/> 00-18-e7-11-44-72	RB	Yes	1
<input type="radio"/> 00-0e-e8-f7-07-70	A02-AP2-W54M	Yes	6
<input type="radio"/> 00-04-ed-0a-1e-28	wlan-ap	Yes	6
<input type="radio"/> 00-40-f4-e8-ab-bb	default	No	6
<input type="radio"/> 00-03-2f-0f-97-d6	AP0F97D6	No	6
<input type="radio"/> 00-04-e2-ab-75-5c	wireless_rho.otpos.local	Yes	6

Chose the correct Wireless network, then click on **Connect**.



You must make sure that Encryption is set the same as that AP you wish to connect.

3.8.3 Wireless Bridge / Multiple Bridge

Configure to the wireless bridge mode; these APs will be a LAN to LAN wireless Ethernet bridge between two separated Ethernet LAN segments.



AP Mode: Select **Wireless Bridge**.

Remote Bridge MAC: Enter the MAC address of the opposite AP here.

Note: These two APs must use same wireless channel setting (SSID, Encryption, Channel).

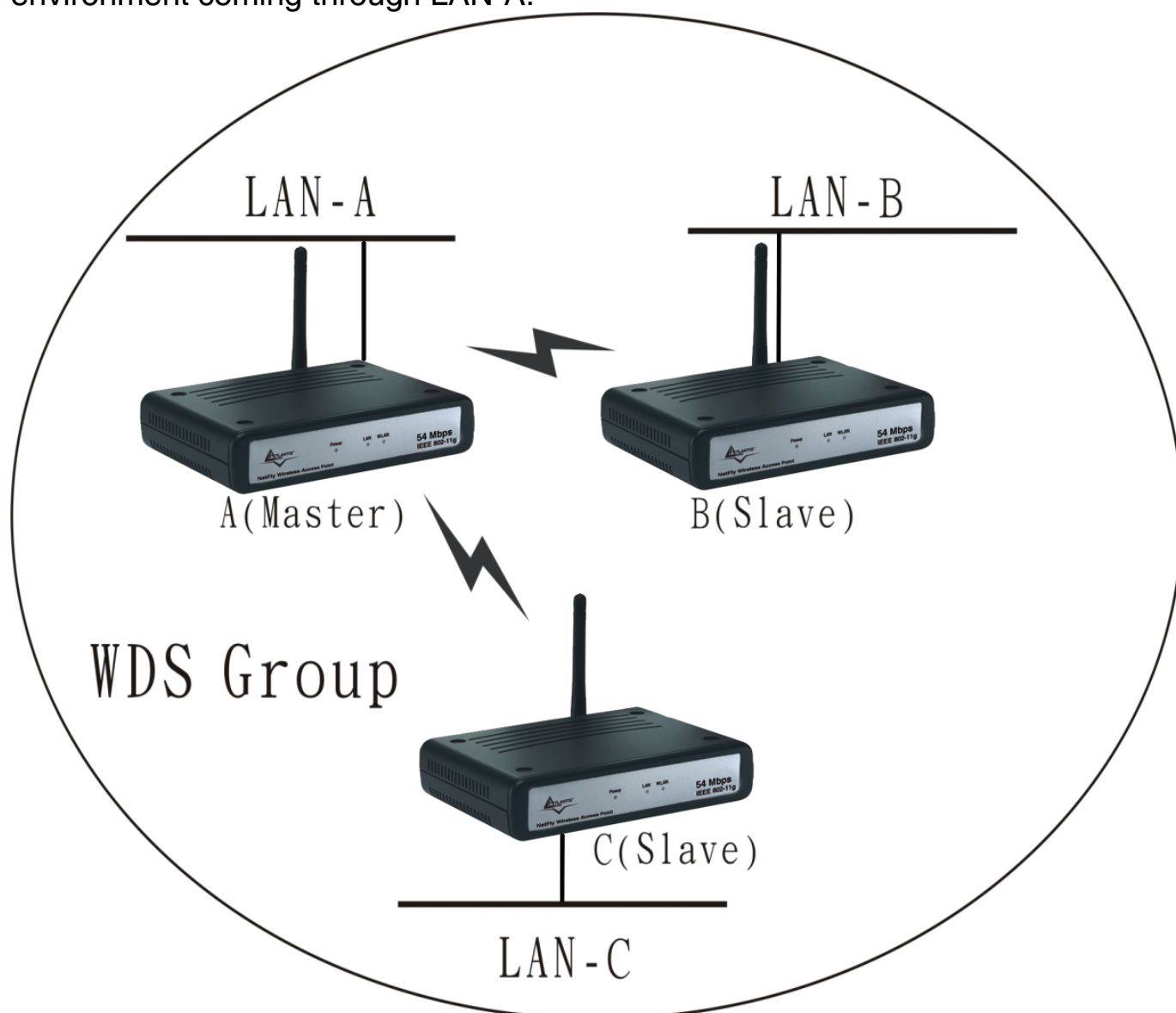


You must make sure that the SSID, Encryption and Channel is set the same as that AP you wish to connect.

When Wireless Bridge / Wireless MultiBridge is enabled only WEP encryption is supported.

When there are three APs joined to the WDS group, one of the AP in WDS mode will be the Master, the other two APs will be the Slave, all of the APs in the WDS group must use the same wireless channel and the same security setting, the Master need to fill all the Slave's MAC address in the "Remote Bridge Mac" list, and the Slave need to fill the Master's MAC address in the "Remote Bridge Mac" list.

In this example, LAN-A can communicate with LAN-B and LAN-C, and LAN-B can communicate with LAN-C through the AP-A. All of LANs will be at the same LAN environment coming through LAN-A.



3.8.4 Repeat Mode

Configure the AP to Repeater mode; the AP will be a wireless LAN repeater that will be extended the WLAN coverage range.



AP Mode: Select Repeat Mode.

Click **Site Survey**.

108Mbps Wireless Lan Access Point Site Survey

	BSS	SSID	WEP	CHANNEL
<input checked="" type="radio"/>	00-18-e7-11-44-72	RB	Yes	1
<input type="radio"/>	00-0e-e8-f7-07-70	A02-AP2-W54M	Yes	6
<input type="radio"/>	00-04-ed-0a-1e-28	wlan-ap	Yes	6
<input type="radio"/>	00-40-f4-e8-ab-bb	default	No	6
<input type="radio"/>	00-03-2f-0f-97-d6	AP0F97D6	No	6
<input type="radio"/>	00-04-e2-ab-75-5c	wireless_rho.otpos.local	Yes	6

Chose the correct Wireless network, then click on **Connect**.



You must make sure that Encryption is set the same as that AP you wish to connect.

When Repeat Mode is enable only WEP encryption is supported.



3.9 Security

This page is where user configures the security features supported by this Access Point.

Password: Allow user to change the new login password. Here are the necessary steps:

1. Enter the new password in the “**AP Password New:**” field.
2. Enter the new password again in the “**Confirm**” field.
3. Click “**Apply**”



MAC Filter: MAC Filter function controls the MAC of the network devices that are listed in this table for access authorization or denial. There have three choices:

1. Disable MAC Filters
2. Only **allow** PCs with MAC listed below to access device
3. Only **deny** PCs with MAC listed below to access device

The maximum number of MAC addresses that can be stored is 50. User can browse through the MAC address saved by selecting the MAC Filter List.

For any changes made in the security page, click “**Apply**” for the changes to be effective.



3.10 Tools

Four functions are provided in this page, Backup, Restore Settings, Restore default settings and Firmware Upgrade.

The screenshot shows the configuration interface for a Wireless Lan Access Point 108Mbps. The page has a blue header with the product name and a navigation menu: Wizard | Status | Basic Setting | IP Setting | Advanced Setting | Security | Tools. A vertical blue sidebar on the left contains the word "Tools" with a red circle next to it. The main content area is divided into several sections:

- Backup Settings:** A single "Backup" button.
- Restore Settings:** An empty text input field, a "Sfoglia..." button, and a "Restore" button.
- Restore to default:** A "Default" button.
- Firmware Upgrade:** Displays "Current Firmware Version: 1.01" and "Firmware Date: Fri, 13 Apr 2007". Below this is an empty text input field, a "Sfoglia..." button, an "Upgrade" button, and a "Help" button.
- SNMP:** Radio buttons for "Enabled" (selected) and "Disabled".
- System Location:** Text input field containing "AP".
- System Contact:** Text input field containing "AP".
- Community:** Text input field containing "public".
- Trap Receiver 1:** Text input field containing "0.0.0.0".
- Trap Receiver 2:** Text input field containing "0.0.0.0".
- Trap Receiver 3:** Text input field containing "0.0.0.0".
- At the bottom of the section are "Apply", "Cancel", and "Help" buttons.

- **Save Settings to Local Hard Drive:** Click on “**Save Settings to Local Hard Drive**” button, which will open a FileSave Dialog box, where user gets to save all the current settings and configurations to a file.
- **Restore Settings:** Click on the “**Browse**” button to open a FileOpen Dialog box, where user gets to select the file, which saves previous settings and configurations. Upon selecting the saved file, click “**Restore**” and complete the restore process when the access point re-operates after it restarts.



- **Restore to default settings:** Click on “**Default**” button to restore the access point back to its manufacture default settings.
- **Firmware Upgrade:** Click on the “**Browse**” button to open a FileOpen Dialog box, where gets to select the firmware file, which download from the web for the latest version. Upon selecting the firmware file, click “**Upgrade**” and complete the firmware upgrade process when the Access Point re-operates after it restarts.

Do NOT upgrade firmware on any Atlantis Land product over a wireless connection. Failure of the device may result. Use only hard-wired network connections.

After upgrading you must reset the Access Point to factory default settings, then manually re-enter your settings.



Please pay attention. In case electrical shutdown, during this procedure, this product could be not usable.

When uploading software to the Wireless Multi-Function Access Point, it is important not to interrupt the Web browser by closing the window or loading a new page. If the browser is interrupted, it may corrupt the software

APPENDIX A: Troubleshooting

This chapter covers potential problems and the corresponding remedies.

A.1 Using LEDs to Diagnose Problems

The LEDs are useful aides for finding possible problem causes.

A.1.1 LED Power

The PWR LED on the front panel does not light up.

Steps	CORRECTIVE ACTION
1	Make sure that the Wireless Access Point's power adaptor is connected to the Access Point and plugged in to an appropriate power source. Use only the supplied power adaptor.
2	Check that the Wireless Access Point and the power source are both turned on and the Wireless Access Point is receiving sufficient power.
3	If the error persists, you may have a hardware problem. In this case, you should contact Atlantis Land SpA.

A.1.2 LED LAN

The LAN LED on the front panel does not light up.

Steps	CORRECTIVE ACTION
1	Check the Ethernet cable connections between the Access Point and the computer or hub.
2	Check for faulty Ethernet cables.
3	Make sure your computer's Ethernet card is working properly.
4	If these steps fail to correct the problem, contact your local distributor for assistance.



A.1.3 LED WLAN

The WLAN LED on the front panel does not light up.

Steps	CORRECTIVE ACTION
1	Press the “Reset” button on the rear panel of the AP, to set back to factory default setting.
2	Please unplug AC Adaptor and replug-it.
3	If these steps fail to correct the problem, contact your local distributor for assistance.

A.2 WEB

I cannot access the web configurator.

Steps	CORRECTIVE ACTION
1	Make sure you are using the correct IP address of the Wireless Multi-Function Access Point. Check the IP address of the Access Point (192.168.1.1).
2	Check Mac Filtering (on Security). Access Control function allows clients whose MAC addresses in the list will be able to connect to this Access Point. When this function is activate, there is no wireless clients will be able to connect to the Access Point unless they are listed in the Access Control list.
3	Press the “Reset” button on the rear panel of the AP, to set back to factory default setting.

The web configurator does not display properly.

Steps	CORRECTIVE ACTION
1	Make sure you are using Internet Explorer 5.0 and later versions.
2	Delete the temporary web files and log in again. In Internet Explorer, click Tools, Internet Options and then click the Delete Files ... button. When a Delete Files window displays, select Delete all offline content and click OK. (Steps may vary depending on the version of your Internet browser.)

A.3 Login

If you forget the password to log in

Steps	CORRECTIVE ACTION
1	The Reset function is to reset the setting back to factory default setting, once you press the “RESET” button within 10



Wireless 108Mbps Multi-Function Access Point

	<p>seconds, the LED of the WLAN will turn off. And when the Access Point is ready, the WLAN LED will start blinking. And the other function is when the AP is locked, press the reset button to unlock it.</p>
2	<p>Before configuring this Wireless Multi-Function Access Point, you need to know the following default settings.</p> <p>Username: admin Password : admin IP Address : 192.168.1.1 Subnet Mask : 255.255.255.0 Wireless: SSSID= default, Channel=6, WEP=disable</p>



A.4 FAQ

Question	Can I run an application from a remote computer over the wireless network?
Answer	This will depend on whether or not the application is designed to be used over a network. Consult the application's user guide to determine if it supports operation over a network.

Question	Can I play computer games with other members of the wireless network?
Answer	Yes, as long as the game supports multiple players over a LAN (local area network). Refer to the game's user guide for more information.

Question	What is Spread Spectrum?
Answer	Spread Spectrum technology is a wideband radio frequency technique developed by the military for use in reliable, secure, mission-critical communications systems. It is designed to trade off bandwidth efficiency for reliability, integrity, and security. In other words, more bandwidth is consumed than in the case of narrowband transmission, but the trade-off produces a signal that is, in effect, louder and thus easier to detect, provided that the receiver knows the parameters of the spread-spectrum signal being broadcast. If a receiver is not tuned to the right frequency, a spread-spectrum signal looks like background noise. There are two main alternatives, Direct Sequence Spread Spectrum (DSSS) and Frequency Hopping Spread Spectrum (FHSS).

Question	What is DSSS? What is FHSS? And what are their differences?
Answer	Frequency-Hopping Spread-Spectrum (FHSS) uses a narrowband carrier that changes frequency in a pattern that is known to both transmitter and receiver. Properly synchronized, the net effect is to maintain a single logical channel. To an unintended receiver, FHSS appears to be short-duration impulse noise. Direct-Sequence Spread-Spectrum (DSSS) generates a redundant bit pattern for each bit to be transmitted. This bit pattern is called a chip (or chipping code). The longer the chip, the greater the probability that the original data can be recovered. Even if one or more



Wireless 108Mbps Multi-Function Access Point

bits in the chip are damaged during transmission, statistical techniques embedded in the radio can recover the original data without the need for retransmission. To an unintended receiver, DSSS appears as low power wideband noise and is rejected (ignored) by most narrowband receivers.

Question	Would the information be intercepted while transmitting on air?
Answer	WLAN features two-fold protection in security. On the hardware side, as with Direct Sequence Spread Spectrum technology, it has the inherent security feature of scrambling. On the software side, WLAN offers the encryption function (WEP) to enhance security and access control.

Question	What is WEP?
Answer	WEP is Wired Equivalent Privacy, a data privacy mechanism based on a 64-bit or 128-bit shared key algorithm, as described in the IEEE 802.11 standard.

Question	What is infrastructure mode?
Answer	When a wireless network is set to infrastructure mode, the wireless network is configured to communicate with a wired network through a wireless access point.

Question	What is roaming?
Answer	Roaming is the ability of a portable computer user to communicate continuously while moving freely throughout an area greater than that covered by a single access point. Before using the roaming function, the workstation must make sure that it is the same channel number with the access point of dedicated coverage area.

Question	What is ISM band?
Answer	The FCC and their counterparts outside of the U.S. have set aside bandwidth for unlicensed use in the ISM (Industrial, Scientific and Medical) band. Spectrum in the vicinity of 2.4 GHz, in particular, is being made available worldwide. This presents a truly revolutionary opportunity to place convenient high-speed wireless capabilities in the hands of users around the globe.



Question	What is the IEEE 802.11g standard?
Answer	Approved in June, 2003 as an <u>IEEE</u> standard for wireless local area networks (<u>WLANs</u>), 802.11g offers wireless transmission over relatively short distances at up to 54 <u>megabits</u> per second (Mbps) compared with the 11 megabits per second of the <u>802.11b</u> (<u>Wi-Fi</u>) standard. Like 802.11b, 802.11g operates in the 2.4 <u>GHz</u> range and is thus compatible with it.



Wireless 108Mbps Multi-Function Access Point



APPENDIX B: Technical Features

Standards	IEEE 802.11b/g IEEE 802.3u 10/100BASE-TX Fast Ethernet
Advanced Features	Wireless Distribution System (Bridge and Repeat) Client Wireless and Repeater SuperG™ (up to 108Mbps) Extended Range XR™ Technology
Signal Type:	DSSS (802.11b) OFDM (802.11g)
Modulation:	QPSK / BPSK / CCK / OFDM
LED Indicators:	Power, LAN (Link/Activity), WLAN (Link)
Frequency Range	2412 MHz ~ 2462 MHz (FCC) 2412 MHz ~ 2472 MHz (ETSI) 2400 MHz ~ 2484 MHz (Japan)
Channel:	1 ~ 11 Channels (FCC) 1 ~ 13 Channels (ETSI) 1 ~ 14 Channels (Japan)
Data Encryption:	64 bit / 128 bit WEP Encryption, WPA, WPA2, WPA-PSK, WPA2-PSK
Data Transfer Rate	Fast Ethernet: 10/100Mbps Wireless: Up to 54Mbps (with Automatic Scale Back)
Receiver Sensitivity	54Mbps: Typical -66 dBm @10% PER 11Mbps: Typical -82 dBm @8% PER
Transmit Power	802.11g: Minimum 13dBm typically 802.11b: Minimum 15dBm typically
Transmission Range:	Outdoor: 100~300M (depends on environment) Indoor: 50~100M (depends on environment)
Network Cables	2-pair UTP/STP Cat. 3,4,5 (100 m)
Interface	1 x 10/100Mbps RJ45 port
Antenna:	1 x 2 dBi Dipole Antenna
DC inputs	DC 5V /2.4A
Power Consumption	5W (Max)
Temperature	Operating: 0 ~ 40 °C, Storage: -10 ~ 70 °C
Humidity	Operating: 10% ~ 90%, Storage: 5% ~ 90%
Dimensions	140 x 98 x 30 mm (W x H x D) without Antenna
EMI	FCC Class B, CE Mark B



APPENDIX C: Support

If you have any problems with the Wireless Access Point, please consult this manual. If you continue to have problems you should contact the dealer where you bought this device. If you have any other questions you can contact the Atlantis Land company directly at the following address:

Atlantis Land SpA
Viale De Gasperi 122
20017 Mazzo di Rho(MI)
ITALY

Tel: **039.02.93907634(help desk)**

Fax: **039.02.93906161**

Email: info@atlantis-land.com or tecnici@atlantis-land.com

WWW: <http://www.atlantiland.it> or www.atlantis-land.com

Free Manuals Download Website

<http://myh66.com>

<http://usermanuals.us>

<http://www.somanuals.com>

<http://www.4manuals.cc>

<http://www.manual-lib.com>

<http://www.404manual.com>

<http://www.luxmanual.com>

<http://aubethermostatmanual.com>

Golf course search by state

<http://golfingnear.com>

Email search by domain

<http://emailbydomain.com>

Auto manuals search

<http://auto.somanuals.com>

TV manuals search

<http://tv.somanuals.com>