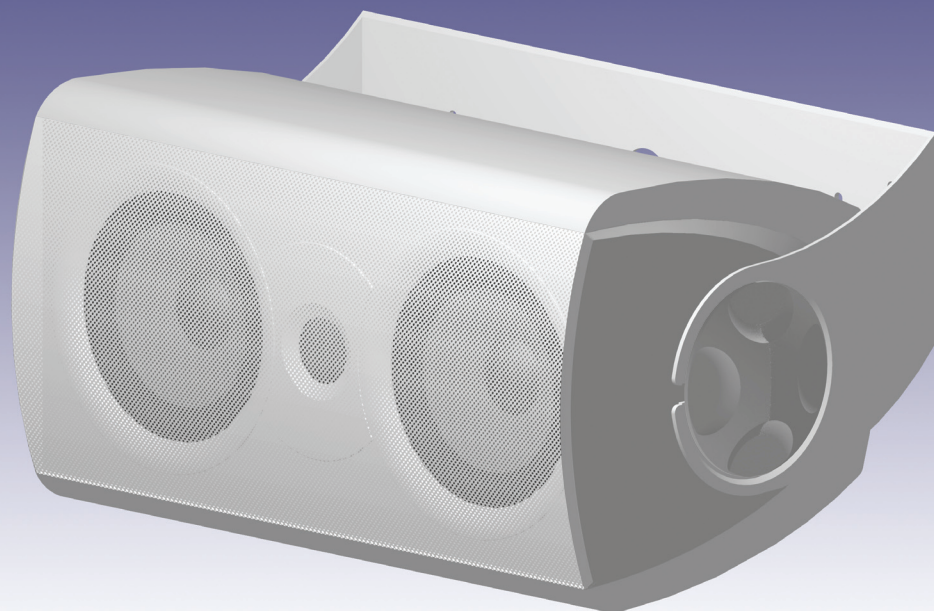


System AW-424
Indoor/Outdoor Speaker System



Instruction Manual

Atlantic
TECHNOLOGY

Table of Contents

- 2 Unpacking the Speakers**
- 3 Descriptions**
- 3 Model AW-424 Indoor/Outdoor Speaker System
- 3 Placement**
- 4 Mounting Your Speakers**
- 5 Connecting Your Speakers**
- 6 Painting Your Speakers**
- 6 Care of Your Speakers**
- 7 Specifications**

Model AW-424 Indoor/Outdoor Speaker System

Thank you for choosing Atlantic Technology products. Your new speaker components are precision-crafted to give you years of enjoyable, trouble-free service. This manual covers the Atlantic Technology AW-424 speaker components.

IMPORTANT: *Although it may seem like asking for driving directions, please take a few moments to read all of this booklet. It has many helpful tips and ideas on properly setting up and using your system. We promise that if you take the time to read and follow these tips you'll get better system performance and more enjoyment.*

Unpacking the Speakers

Use care when unpacking the speakers. Remember to keep the original boxes and packing material, in the unlikely event the speakers need servicing, or if you move.

For Future Reference

Record the serial number and date of purchase for each speaker here. The serial number is found on the speaker terminal panel on the back of the enclosure.

Serial Number _____

Date of Purchase _____

The contents of this manual are Copyright © 2005 by Atlantic Technology International, Corp., and may not be duplicated or reproduced by any means, whether physical, electronic or otherwise without prior written consent from Atlantic Technology International, Corp.

Atlantic Technology and the Atlantic Technology logo are registered trademarks of Atlantic Technology International, Corp.

Specifications are those in effect at the time of printing. Atlantic Technology International, Corp. reserves the right to change specifications or designs at any time without notice without obligation to modify existing units.

Description

Model AW-424 Indoor/Outdoor Speaker System

Congratulations on your purchase of the Atlantic Technology AW-424 indoor/outdoor speaker system. Utilizing tough, environmentally-resistant materials and state-of-the-art acoustic design, the AW-424 lets you take Atlantic's famous sound outdoors.

The advanced design of these speakers deliver detailed, articulate sound, for a dramatic listening experience. Each speaker contains two GLH (Graphite Loaded Homopolymer) 4 1/2-inch (115mm) woofers, and an advanced 1" (25mm) ferrofluid-cooled, damped soft dome tweeter with a powerful neodymium magnet structure. The drivers are mounted in an acoustically inert, heavily-reinforced enclosure made from mineral-filled polypropylene. This is a far more neutral, less "ringy" material than is typically used with conventional outdoor speakers, and it contributes to the AW-424's amazingly musical sound.

All the component parts of the AW-424 have been designed for durability under harsh conditions: UV and impact resistant cabinets, aluminum powder-coated grilles and mounting brackets, and gold-plated speaker terminals.

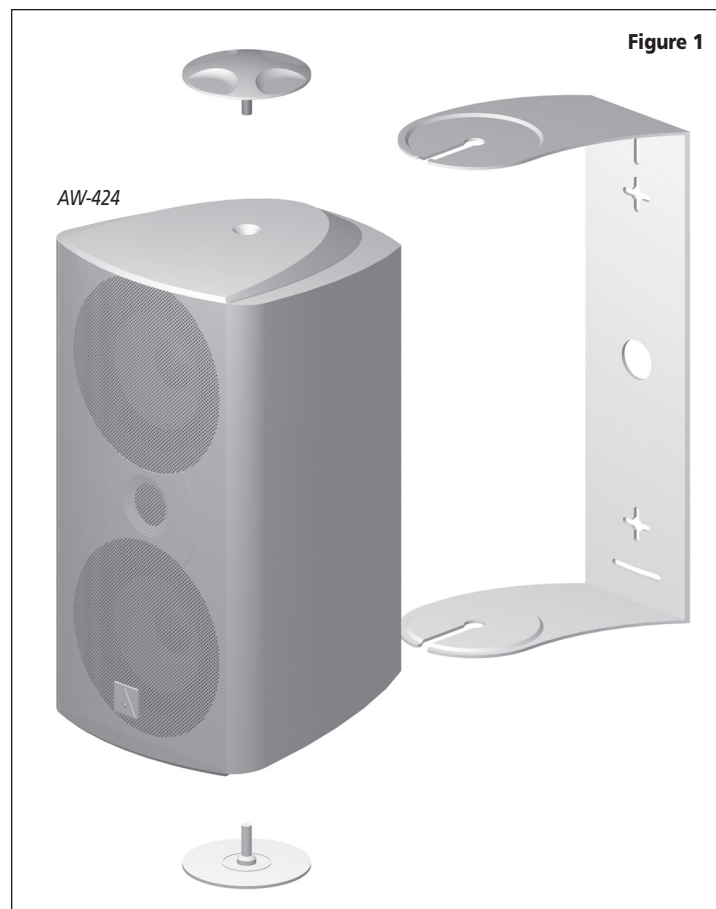
Speaker Placement

Placement has a significant impact on the sound of your system. Please take a few minutes to experiment with different speaker locations to assure that you obtain pleasing sound and adequate coverage of your primary listening area before you commit to running speaker wire and permanently attaching the mounting brackets.

The speakers should be far enough apart (6 to 10 feet, 2-3 meters is usually best) that you get a good stereo "image" when they are playing, but not so far apart that the sound seems to come only from each individual speaker.

Wall- or corner-mounting will tend to increase the speaker's apparent bass output compared to a free-standing speaker, so take this into consideration when choosing a mounting location.

Although the AW-424 speakers are constructed of the highest quality materials, common sense should be observed when using them. Placement under the eaves reduces the speaker's exposure to direct sunlight and precipitation, which tends to increase the speaker's life and minimize any potential weather-related wear and tear. (See figure 2)



Mounting Your Speakers

Use the supplied mounting brackets to mount the speakers vertically or horizontally on exterior house walls, deck corner posts, or other secure surface. The bracket has holes to facilitate a variety of mounting hardware.

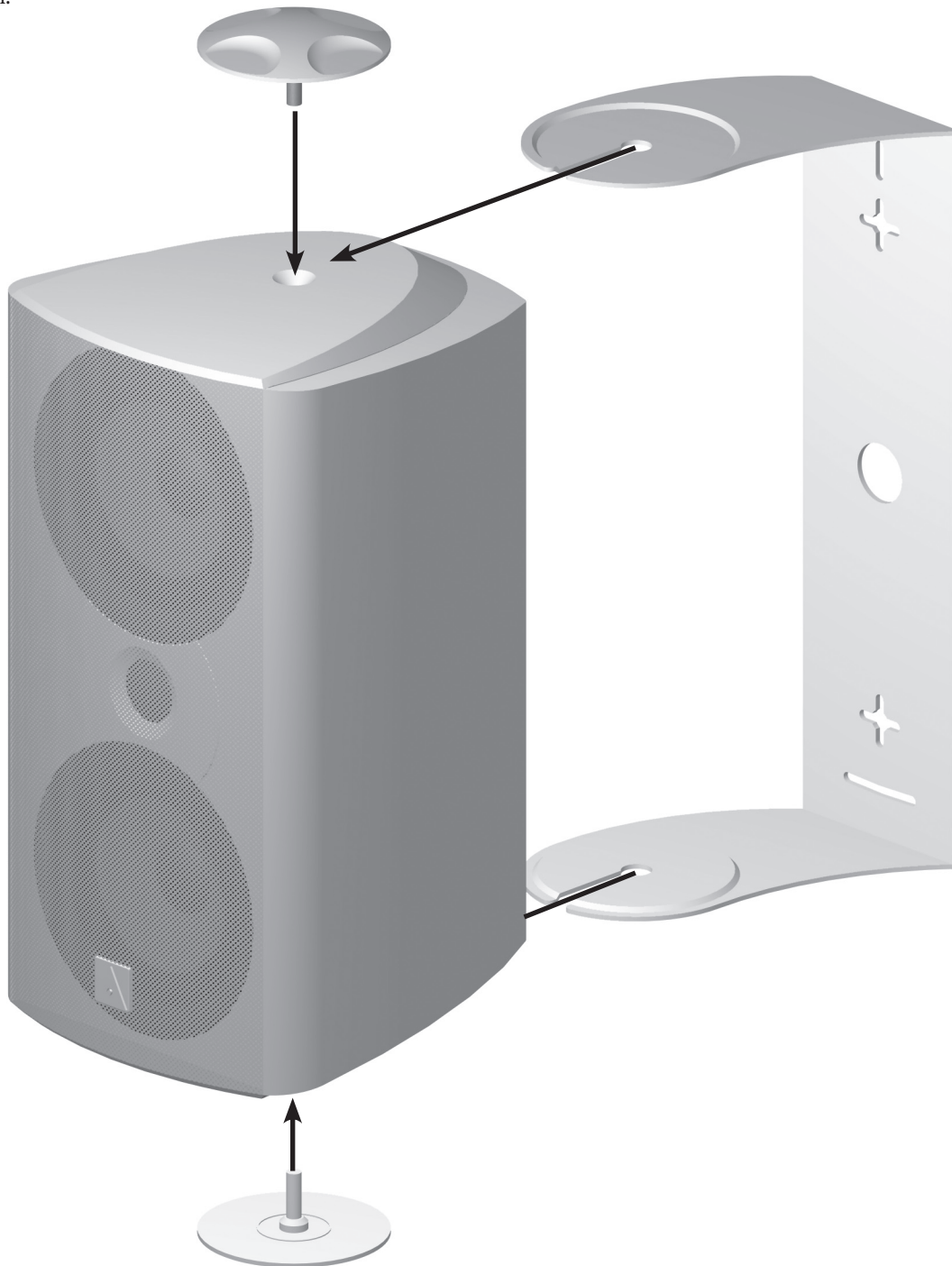
Always consult a knowledgeable installer regarding the best hardware to use on your mounting surface.

To mount the speaker, loosen the knobs and remove the bracket from the speaker. If you are running speaker wires, you may route the wires through the large hole in the middle of the bracket; the bracket will then cover the wire hole in the wall.

Mount the bracket in its desired location.

Reattach the knobs to the speaker and tighten them partially down. Slide the speaker/knob assembly into the mounting channels in the bracket until the speaker "seats" in the final position. Adjust the speaker to the desired angle and tighten the knobs to secure the speaker in place. (See below)

You may also use mounting brackets made by other companies, if you choose. The 1/4-20 threaded inserts for the knob posts are the exact same thread used by many manufacturers for their various mounting devices.



Connecting Your Speakers

We recommend that you connect your speakers using high quality dual conductor stranded wire of 16 gauge or heavier, for lengths up to 25 feet (8m). Remember, the lower the gauge number, the heavier the wire. Use heavier gauge wire for longer runs. Please contact your audio/video dealer or installer for specific cable recommendations and further information regarding special circumstances. The terminals themselves are designed to allow the use of very heavy speaker wire or connectors.

WARNING: To prevent risk of electrical shock or damage to your equipment, always switch off the amplifier or receiver when making any system connections.

You can connect your speakers by using a variety of audio connectors such as banana plugs, pin connectors, spade lugs, etc., or you can:

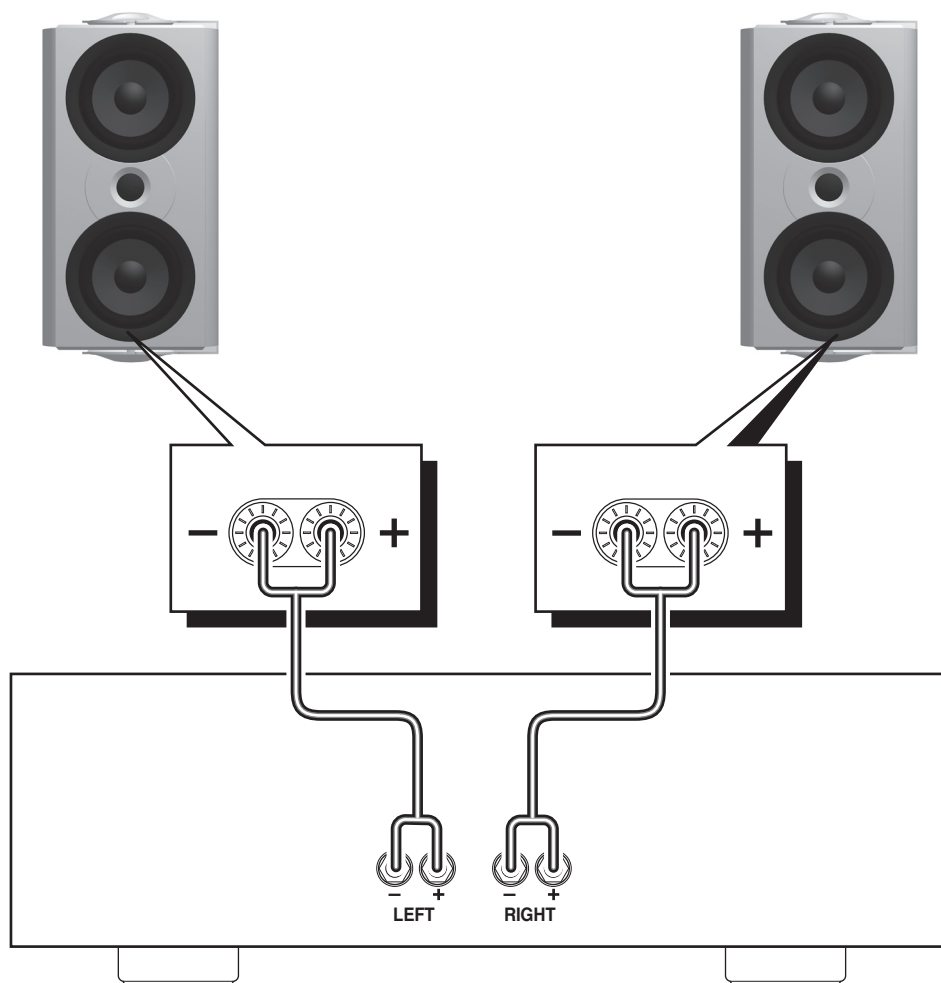
1. Remove ½-inch (13mm) of insulation from each wire end.
2. Twist the stranded wire together, keeping the two ends separate.
3. Push down on the connector post and place the appropriate wire through the postholes in the connectors.

It's important to observe polarity while making speaker connections: red (+) terminals on the amplifier to red (+) on the speaker, black (-) on the amplifier to black (-) on the speaker. Look carefully at the wires you are using and note that one of the conductors of each pair will typically be identified by color, printing on the outer jacket, ridges on the outer jacket, or a thread intertwined with the wire strands. By convention, the marked wire is connected to the red (+) terminal.

WARNING: Before turning on the amplifier, be certain that no stray wire strands are touching across any terminals as this might damage your amplifier.

Finally, check the polarity of your front Left/Right speakers by listening to some stereo music with good bass content. If the sound seems "hollow," unusually spread out, or seems to have weak bass, recheck your connections for proper polarity and correct any out of phase connections by reversing the connections to one speaker only, if necessary.

Be sure to connect red (+) on the speaker to red (+) on the amplifier and black (-) on the speaker to black (-) on the amplifier.



Painting Your Speakers

If desired, you can paint the exterior of the speaker enclosure and grille to better match the speaker's surroundings.

You will need:

- **A fast-drying spray paint specifically formulated for plastic (such as Krylon® Fusion)**
- **A paper clip or curved-tip awl**
- **Masking tape and heavy paper or cardboard for masking**
- **A clean, dry cloth**

To prepare for painting:

- **Remove the bracket.**
- **Use the paper clip or awl to remove the grille. Gently pull the grille at each corner until it can be removed by hand.**
- **Cut the paper or cardboard to the size of the baffle (the surface that contains the speaker elements) and the terminal area on the rear panel. Mask these areas off.**
- **Wrap masking tape around the threaded posts of the knobs.**
- **Use a small piece of masking tape to cover the threaded insert.**
- **Use the clean, dry cloth to wipe any dust or dirt off the cabinet.**

Painting the cabinet and knobs:

- **Apply two thin coats of plastic-compatible paint, following the paint manufacturer's directions. Be careful not to fill the threaded inserts with excessive paint.**
- **Paint only the upper surface of the knobs. Do not contaminate the treaded posts with paint.**
- **Let dry thoroughly, then carefully remove the masks and tape from the cabinet.**

Painting the grilles and bracket:

- **Apply one coat of paint, being careful not to "fill in" the holes in the metal grille with paint, as this will seriously degrade the sound.**
- **If necessary, you may apply a second coat to the bracket.**

Care of Your Speakers

Clean your cabinets using a soft, lint-free cloth. If you wish, you can slightly moisten the cloth with plain water. Do not use any other cleaning agents or chemicals.

IMPORTANT: SAVE YOUR BOXES! *If you can do so, save the cartons, packing pieces, and plastic bags that came with your speakers. They will be useful in case you move or have to ship your loudspeakers for any reason. In any case, save all packing materials until you are certain that the systems have suffered no damage in shipment. If you find such damage, either visible or internal, contact your dealer immediately.*

Specifications

Model	AW-424
Type	2-way with Sealed Indoor/Outdoor Speaker
Drivers	Woofer (2) 4 ½" (115mm) GLH Tweeter (1) 1" (25mm) soft dome
Frequency Response	70Hz – 20kHz ±3dB
Nominal Impedance	8 ohms
Crossover Frequency	3.5kHz, 3rd order
Sensitivity	88dB
Recommended Amplifier Power	10 – 150 Watts RMS
Dimensions w/grille (W x H x D)	6.875 x 12.5 x 6.5" 175 x 320 x 166mm
Weight (ea)	12lbs; 5.5kg

IMPORTANT NOTE: The power recommendation for these speaker systems assumes that you will not operate your amplifier/receiver in a way that produces distortion. Even rugged speakers like ours can be damaged by an amplifier driven into audible distortion. The harsh amplifier distortion ("clipping") that occurs in this situation will eventually cause damage to the speaker system. This type of damage may be cumulative and can build up over time, as the amplifier is driven into overload again and again. Such damage is easily identifiable through examination of the damaged speaker's voice coil and is not covered by the warranty.

Specifications are those in effect at the time of printing. As part of our ongoing program of continuous product improvement, Atlantic Technology reserves the right to change specifications or appearance at any time without notice.



343 Vanderbilt Avenue Norwood, MA 02062 (781) 762-6300 www.atlantictechnology.com

015-1424

Free Manuals Download Website

<http://myh66.com>

<http://usermanuals.us>

<http://www.somanuals.com>

<http://www.4manuals.cc>

<http://www.manual-lib.com>

<http://www.404manual.com>

<http://www.luxmanual.com>

<http://aubethermostatmanual.com>

Golf course search by state

<http://golfingnear.com>

Email search by domain

<http://emailbydomain.com>

Auto manuals search

<http://auto.somanuals.com>

TV manuals search

<http://tv.somanuals.com>