

ASUS[®] PCI-L3C920

Network Interface Card

User's Guide

Manual Revision 1.01

Published June 2001

No part of this documentation, including the products and software described in it, may be reproduced, transmitted, transcribed, stored in a retrieval system, or translated into any language in any form or by any means, except documentation kept by the purchaser for backup purposes, without the express written permission of ASUSTeK COMPUTER INC. ("ASUS").

ASUS PROVIDES THIS DOCUMENTATION "AS IS" WITHOUT WARRANTY OF ANY KIND, EITHER EXPRESS OR IMPLIED, INCLUDING BUT NOT LIMITED TO THE IMPLIED WARRANTIES OR CONDITIONS OF MERCHANTABILITY OR FITNESS FOR A PARTICULAR PURPOSE. IN NO EVENT SHALL ASUS, ITS DIRECTORS, OFFICERS, EMPLOYEES OR AGENTS BE LIABLE FOR ANY INDIRECT, SPECIAL, INCIDENTAL, OR CONSEQUENTIAL DAMAGES (INCLUDING DAMAGES FOR LOSS OF PROFITS, LOSS OF BUSINESS, LOSS OF USE OR DATA, INTERRUPTION OF BUSINESS AND THE LIKE), EVEN IF ASUS HAS BEEN ADVISED OF THE POSSIBILITY OF SUCH DAMAGES ARISING FROM ANY DEFECT OR ERROR IN THIS DOCUMENTATION OR PRODUCT.

Product warranty or service will not be extended if: (1) the product is repaired, modified or altered, unless such repair, modification or alteration is authorized in writing by ASUS; or (2) the serial number of the product is defaced or missing.

Products and corporate names appearing in this documentation may or may not be registered trademarks or copyrights of their respective companies, and are used only for identification or explanation and to the owners' benefit, without intent to infringe.

For documentation updates, visit the ASUS website at www.asus.com.tw.

The specifications and information contained in this documentation are furnished for informational use only, and are subject to change at any time without notice, and should not be construed as a commitment by ASUS. ASUS assumes no responsibility or liability for any errors or inaccuracies that may appear in this documentation, including the products and the software described in it.

Copyright © 2001 ASUSTeK COMPUTER INC. All Rights Reserved.

Introduction

Thank you for buying the ASUS PCI-L3C920 Network Interface Card (NIC)!

This user's guide tells you how to install and configure the card. It is assumed that you have adequate knowledge on PCs and some familiarity with Ethernet networks.

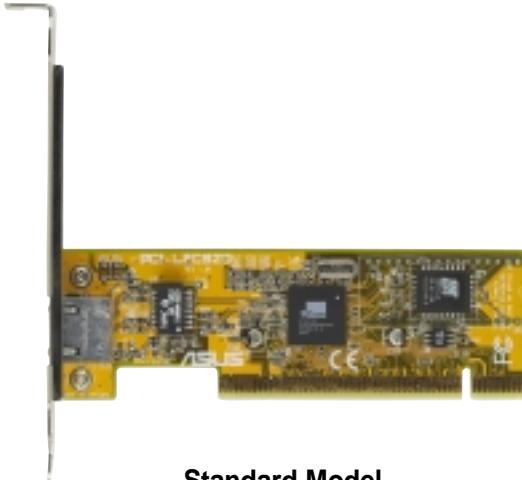
Package Contents

Check the following items if present in your package. If you discover damaged or missing items, contact your retailer.

- (1) ASUS PCI-L3C920 Network Interface Card
- (1) Support CD
- (1) User Guide

Models

The ASUS PCI-L3C920 network interface card comes in two models, one with a standard bracket for regular PCs and one with a low profile bracket for small book PCs. Both models have the same card components.

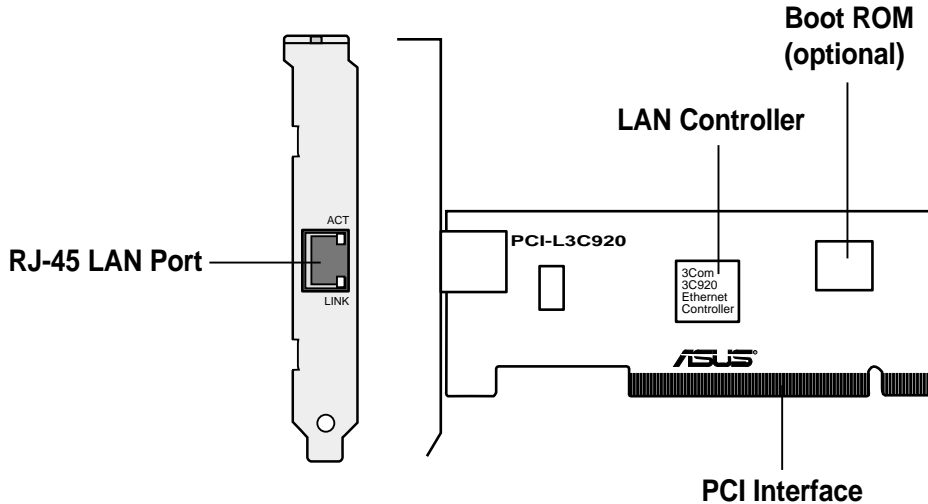


Standard Model



Low Profile Model

Layout



NOTE: The Boot ROM chip is an optional item. If your card did not come with this chip, an empty socket is provided in case you wish to install a Boot ROM at a later time.

Features

PCI Interface

- Full 32-bit (33 MHz) PCI bus interface (Rev2.2 compliant)
- Zero wait-state bus master data bursts
- PCI 5V bus support

Network Interface

- 3Com EtherLink® 10BASE-T/100BASE-TX controller
- 32-bit PCI host interface
- RJ-45 LAN port

Boot ROM Interface (optional)

- Supports 64KB/128KB, byte-wide Flash ROM devices

System Requirements

Your PC or server should meet the following system requirements before installing the ASUS PCI-L3C920 network interface card:

- ASUS motherboard
- Pentium processor
- Minimum 640K memory
- Available bus-mastering PCI slot

NOTE: The ASUS PCI-L3C920 network interface card must be installed in an ASUS motherboard.

Running the Preinstallation Program

Before installing the network card in your PC, run the preinstallation program to properly set up the system to the environment and prevent conflicts between the card and your operating system. DO NOT install the card at this time.

Follow these steps to run the installation program.

1. Turn on your PC and start Windows.
2. Quit any open applications and disable any anti-virus software.
3. Insert the Support CD in the CD-ROM drive.

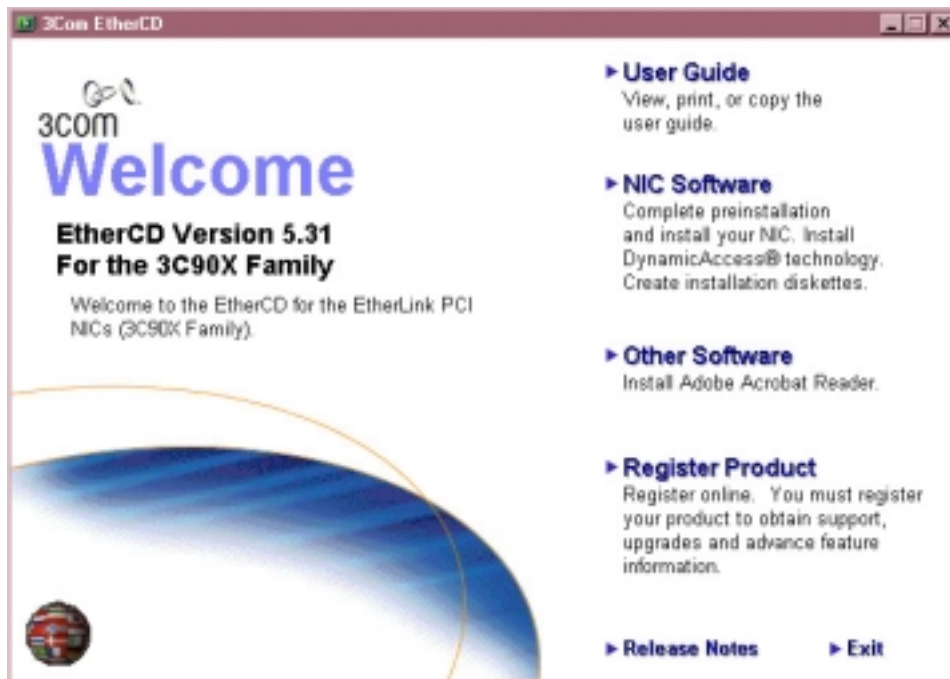
The Welcome screen appears. If the Welcome screen does not appear, type the following from the Run option of the Windows Start menu:

d:\install\setup.exe

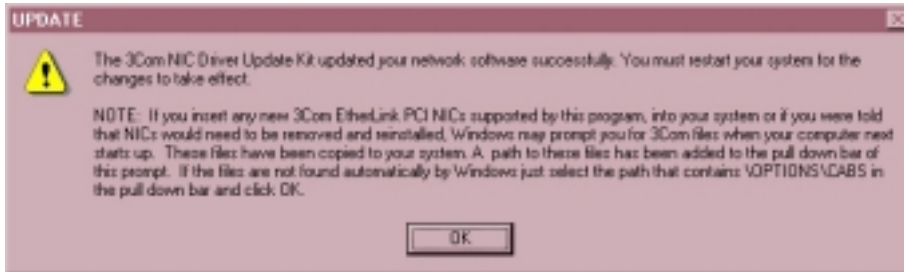
d:\ represents the CD-ROM drive. You may change it if you assigned a different letter to your CD-ROM drive.

See next page for an image of the Welcome screen.

Welcome Screen



4. From the Welcome screen, click **NIC Software**.
5. Click **NIC Drivers and Diagnostics**, then **Install NIC Driver**.
 - To install the network driver and the 3Com NIC Diagnostics program, click **Install with Diagnostic Program**.
 - To install the network driver only, click **Install without Diagnostic Program**.
6. Take note of the message on the box that appears, then click **OK**.



7. Select your operating system from the list that appears.
8. Click **Done** on the Completing NIC Installation screen.
9. Exit the installation program, shut down Windows, and turn off the PC. Do not remove the Support CD from the CD-ROM drive.
10. Proceed to the next section “Installing the Network Card.”

Installing the Network Card

Follow these steps to install the card into your PC.

CAUTION! Before handling the network card, touch a bare metal portion of your PC to discharge static electricity from your body. Wear a wrist strap grounded to the PC chassis when handling the card.

1. Make sure that the PC is turned off. Unplug the power cord from the electrical socket.
2. Remove the PC cover.
3. Locate an empty, non-shared bus-mastering PCI slot and remove its slot cover. Save the screw for later use.

IMPORTANT! Do not install the network card in a shared PCI slot. Check your PC documentation to ensure that you install the card into the correct slot.

4. Carefully insert the card into the PCI slot.
5. Secure the card with the screw that you removed earlier.
6. Replace the PC cover and plug in the power cord.

Connecting to the Network

Follow these steps to connect the card to the network.

NOTE: The RJ-45 port on the network card provides a 10 Mbps or 100 Mbps connection, depending on the speed of the connected hub or switch.

1. Plug the RJ-45 connector of the twisted-pair network cable into the RJ-45 port on the card backplate.
2. Connect the other end of the network cable to an active network port.
3. Turn on the PC.
4. Proceed to the next section “Installing the Network Driver.”

Installing the Network Driver

IMPORTANT: Before installing the network driver, make sure that:

- You have run the preinstallation program
- You have installed the card in the PC and connected to the network
- You have the Windows installation files (for Windows 95/98 only).
(These files may have been already copied to your hard drive when you installed Windows).

The network driver installation procedures vary depending on your operating system.

1. Windows 95/98/2000 automatically detects the presence of the network card and prompts you to insert the Support CD for the network driver. Follow the screen instructions. Restart the PC after completing the driver installation.
2. For Windows NT 3.51 and 4.0, install the driver by double-clicking the Control Panel icon, then the Network icon. Insert the Support CD when prompted. Restart the PC after completing the driver installation.

Refer to the online User Guide in the Support CD for detailed installation procedure of each operating system.

ASUSTeK COMPUTER INC. (Asia-Pacific)

Marketing

Address: 150 Li-Te Road
Peitou, Taipei, Taiwan 112
Telephone: +886-2-2894-3447
Fax: +886-2-2894-3449
Email: info@asus.com.tw

Technical Support

MB/Others (Tel): +886-2-2890-7121 (English)
Notebook (Tel): +886-2-2890-7122 (English)
Desktop/Server (Tel): +886-2-2890-7123 (English)
Fax: +886-2-2893-7775
Email: tsd@asus.com.tw WWW: www.asus.com.tw
FTP: ftp.asus.com.tw/pub/ASUS

ASUS COMPUTER INTERNATIONAL (America)

Marketing

Address: 6737 Mowry Avenue
Mowry Business Center, Building 2
Newark, CA 94560, USA
Fax: +1-510-608-4555
Email: tmd1@asus.com

Technical Support

Fax: +1-510-608-4555
Email: tsd@asus.com
WWW: www.asus.com
FTP: ftp.asus.com/Pub/ASUS

ASUS COMPUTER GmbH (Europe)

Marketing

Address: Harkortstr. 25
40880 Ratingen, BRD, Germany
Fax: +49-2102-442066
Email: sales@asuscom.de
(for marketing requests only)

Technical Support

Hotline: MB/Others: +49-2102-9599-0
Notebook: +49-2102-9599-10
Fax: +49-2102-9599-11
Support (Email): www.asuscom.de/de/support
WWW: www.asuscom.de
FTP: ftp.asuscom.de/pub/ASUSCOM

15-061068000

Free Manuals Download Website

<http://myh66.com>

<http://usermanuals.us>

<http://www.somanuals.com>

<http://www.4manuals.cc>

<http://www.manual-lib.com>

<http://www.404manual.com>

<http://www.luxmanual.com>

<http://aubethermostatmanual.com>

Golf course search by state

<http://golfingnear.com>

Email search by domain

<http://emailbydomain.com>

Auto manuals search

<http://auto.somanuals.com>

TV manuals search

<http://tv.somanuals.com>