



USB-BT211

Mini USB Bluetooth Adapter

User Manual

For Windows® XP OS

E4687

First Edition

July 2009

Copyright © 2009 ASUSTeK Computer Inc. All Rights Reserved.

No part of this manual, including the products and software described in it, may be reproduced, transmitted, transcribed, stored in a retrieval system, or translated into any language in any form or by any means, except documentation kept by the purchaser for backup purposes, without the express written permission of ASUSTeK Computer Inc. ("ASUS").

Product warranty or service will not be extended if: (1) the product is repaired, modified or altered, unless such repair, modification or alteration is authorized in writing by ASUS; or (2) the serial number of the product is defaced or missing.

ASUS PROVIDES THIS MANUAL "AS IS" WITHOUT WARRANTY OF ANY KIND, EITHER EXPRESS OR IMPLIED, INCLUDING BUT NOT LIMITED TO THE IMPLIED WARRANTIES OR CONDITIONS OF MERCHANTABILITY OR FITNESS FOR A PARTICULAR PURPOSE. IN NO EVENT SHALL ASUS, ITS DIRECTORS, OFFICERS, EMPLOYEES OR AGENTS BE LIABLE FOR ANY INDIRECT, SPECIAL, INCIDENTAL, OR CONSEQUENTIAL DAMAGES (INCLUDING DAMAGES FOR LOSS OF PROFITS, LOSS OF BUSINESS, LOSS OF USE OR DATA, INTERRUPTION OF BUSINESS AND THE LIKE), EVEN IF ASUS HAS BEEN ADVISED OF THE POSSIBILITY OF SUCH DAMAGES ARISING FROM ANY DEFECT OR ERROR IN THIS MANUAL OR PRODUCT.

SPECIFICATIONS AND INFORMATION CONTAINED IN THIS MANUAL ARE FURNISHED FOR INFORMATIONAL USE ONLY, AND ARE SUBJECT TO CHANGE AT ANY TIME WITHOUT NOTICE, AND SHOULD NOT BE CONSTRUED AS A COMMITMENT BY ASUS. ASUS ASSUMES NO RESPONSIBILITY OR LIABILITY FOR ANY ERRORS OR INACCURACIES THAT MAY APPEAR IN THIS MANUAL, INCLUDING THE PRODUCTS AND SOFTWARE DESCRIBED IN IT.

Products and corporate names appearing in this manual may or may not be registered trademarks or copyrights of their respective companies, and are used only for identification or explanation and to the owners' benefit, without intent to infringe.

Table of contents

About this guide	v
How this guide is organized	v
Conventions used in this guide	v
Chapter 1: Knowing your USB Bluetooth adapter	
Bluetooth® overview	1
Package contents	1
System requirements	1
USB-BT211 specifications summary	2
Chapter 2: Getting started	
Installing the Bluetooth XP Suite	3
Launching the Bluetooth XP Suite	5
Chapter 3: Bluetooth XP Suite	
Bluetooth XP Suite screen	6
Bluetooth Suite Tray	8
Bluetooth Suite Configuration	9
Bluetooth Suite Settings	9
Local Device	10
Bluetooth Security	11
Profile Manager	11
Shared Folders	14
Object Push	15
Audio	16
Basic Imaging	17
Fax Server Configuration	17
Sync	18

Table of contents

Chapter 4: Communicating with a Bluetooth device

Pairing with a Bluetooth device	19
Connecting to a Bluetooth device.....	22
Using the Dial-up Networking Profile (DUN)	24

Chapter 5: Appendices

Notices.....	32
ASUS Contact information.....	34

About this guide

This user guide contains information that you need to install and configure the ASUS USB Bluetooth adapter.

How this guide is organized

This guide contains the following parts:

- **Chapter 1: Knowing your USB Bluetooth adapter**
This chapter provides information on the package contents, system requirements, and specifications of the ASUS USB Bluetooth adapter.
- **Chapter 2: Getting started**
This chapter describes how to install and launch the Bluetooth XP Suite.
- **Chapter 3: Bluetooth XP Suite**
This chapter gives a detailed description on the Bluetooth XP Suite.
- **Chapter 4: Communicating with a Bluetooth device**
This chapter describes how to connect your computer to a Bluetooth device using the Bluetooth XP Suite.
- **Chapter 5: Appendices**
This chapter provides you with the regulatory Notices and Safety Statements.

Conventions used in this guide



WARNING: Information to prevent injury to yourself when trying to complete a task.



CAUTION: Information to prevent damage to the components when trying to complete a task.



IMPORTANT: Instructions that you **MUST** follow to complete a task.



NOTE: Tips and additional information to aid in completing a task.

1 Knowing your USB Bluetooth adapter

Bluetooth® overview

Bluetooth® is a short-range wireless technology that allows communication among Bluetooth-enabled devices such as PCs, mobile devices, headsets, and GPS receivers. Bluetooth® devices only need to be within the specified range to exchange information and do not need any physical connection.

With Bluetooth® technology, you can:

- Connect your computer to the Internet using a Bluetooth-enabled mobile phone.
- Connect your computer to other Bluetooth devices that are within range.
- Synchronize data between your computer and Bluetooth-enabled mobile phone.
- Use a wireless mouse, keyboard, or game controller on your computer.

Package contents

Check your ASUS USB Bluetooth adapter package for the following items.

- ASUS USB-BT211
- Support CD (manual, utilities)
- Quick Start Guide



If any of the items is damaged or missing, contact your retailer.

System requirements

Before using your ASUS USB Bluetooth adapter, ensure that your system meets the following requirements:

Operating system: Microsoft® Windows® XP / Vista

System memory: 64MB or larger

Hard drive free space: 100MB

USB-BT211 specifications summary

Model	USB-BT211
Standard	Bluetooth v2.1 + EDR
Interface	USB 2.0/1.1
Range	Up to 100 meters
Bluetooth Profile	A2DP, AVRCP, BIP, DUNP, FAX, FTP, HCRP, HID, GAP, OPP, PAN, SPP, SYNC, HSP, HFP, BPP, SAP
Frequency Band	2.400 ~ 2.4835GHz unlicensed ISM band
Modulation Method	GFSK for 1Mbps, $\pi/4$ -DQPSK for 2Mbps, 8-DPSK for 3Mbps
Spread Spectrum	FHSS (Frequency Hopping Spread Spectrum)
Transfer Rate (Maz)	Max UARTbaud rates of 3Mbps
OS support	Windows® XP / Vista
Power Consumption	Tx Typical: 51mA, Rx Typical: 43mA, Standby Mode: 15mA
Input Power	DC 5V via USB port
Receiving Sensitivity	<-85dBm at <0.1% BER
Physical Dimensions	19.52 x 13.5 x 6.8 mm (L x W x H)
Weight	2.2g
Operating Temperature	0°C ~ 60°C (32°F ~ 140°F)
Storage Temperature	-10°C ~ 70°C (14°F ~ 158°F)
Humidity	5% ~ 90%, non-condensing

**Specifications are subject to change without notice.*

Getting started 2

Installing the Bluetooth XP Suite

The Bluetooth XP Suite is a Bluetooth management tool that enables you to find, pair, and communicate with other Bluetooth devices easily.



- Remove any previously installed Bluetooth software on your computer.
Click **Start > Settings > Control Panel > Add/Remove Programs** to uninstall Bluetooth software.
- Install the Bluetooth XP Suite before inserting the USB Bluetooth adapter.

To install the Bluetooth XP Suite on your computer:

1. Place the Support CD into the optical drive. An autorun screen appears if the Autorun function is enabled on your computer.

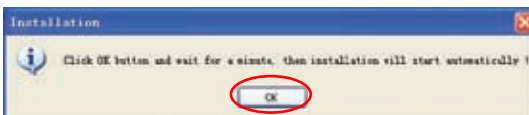


If the Autorun function is not enabled on your computer, double-click **setup.exe** in the Software folder to run the CD.

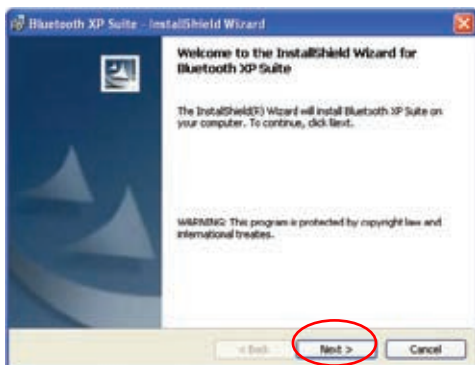
2. Select your language and click **Install Bluetooth Utilities/Driver**.



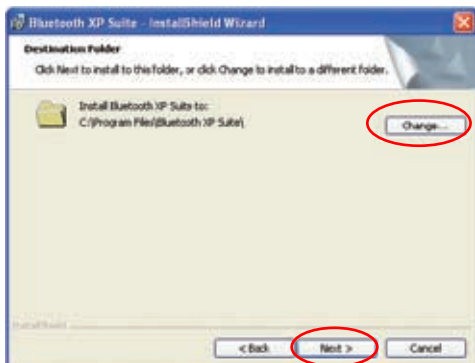
3. Click **OK**.



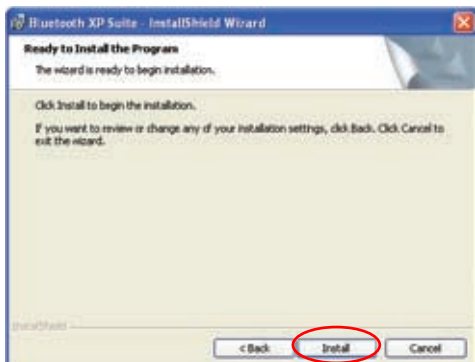
- The InstallShield Wizard for Bluetooth XP Suite launches. Click **Next** to continue.



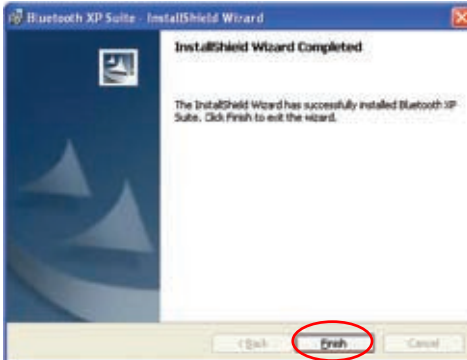
- Click **Next** to install the Bluetooth XP Suite to the default folder or click **Change** to specify another folder.



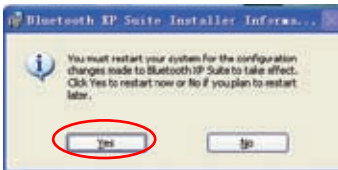
- Click **Install** to start the installation.



7. Click **Finish** to exit the installation wizard.



8. Click **Yes** to restart your computer and activate the changes.



9. Insert the USB Bluetooth adapter after your computer reboots, then the computer detects the USB Bluetooth adapter and completes installing the Bluetooth profile drivers.

Launching the Bluetooth XP Suite

To launch the Bluetooth XP Suite:

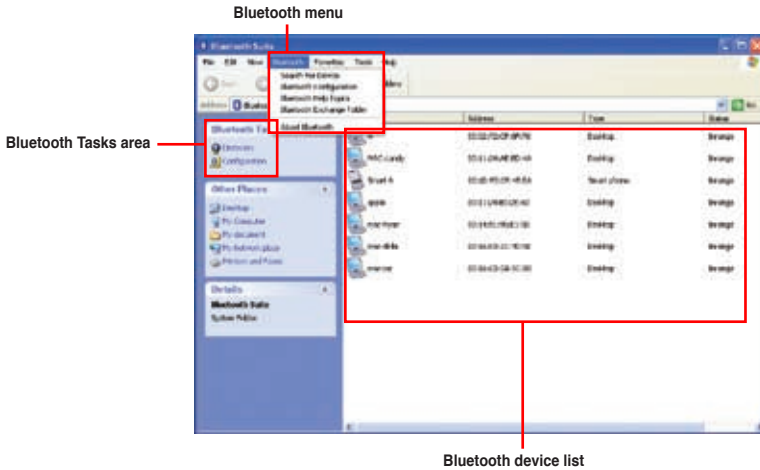
- Click **Start > Programs > ASUS Bluetooth Suite > Launch Bluetooth Suite**.
- Double-click **Bluetooth Suite** on the Windows® desktop.

Bluetooth XP Suite

Bluetooth XP Suite screen

The Bluetooth XP Suite screen consists of three major parts:

- Bluetooth menu
- Bluetooth Tasks area
- Bluetooth device list



Bluetooth menu

Search For Device – Searches for Bluetooth devices within range. The available devices are listed in the right panel of the Bluetooth XP Suite screen.

Bluetooth Configuration – Launches Bluetooth Suite Configuration which allows you to configure Bluetooth XP Suite settings and Bluetooth profiles. Refer to the section **Bluetooth Suite Configuration** for details.



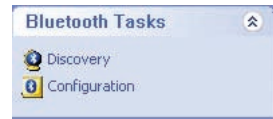
Bluetooth Help Topics – Opens Bluetooth help files.

Bluetooth Exchange Folder – Opens the Bluetooth exchange folder for the Object Push service. Refer to the section **Object Push** for more details on the Object Push service.

About Bluetooth – Displays the version of your Bluetooth XP Suite.

Bluetooth Tasks area

Discovery – Searches for Bluetooth devices within range or displays the Bluetooth services that a Bluetooth device supports. The available devices or services are listed in the right panel of the Bluetooth XP Suite screen.



Configuration – Launches Bluetooth Suite Configuration which allows you to configure Bluetooth XP Suite settings and Bluetooth profiles. Refer to **Bluetooth Suite Configuration** for details.

Bluetooth device list

The Bluetooth device list displays the devices that are within range and their addresses, types, and statuses.

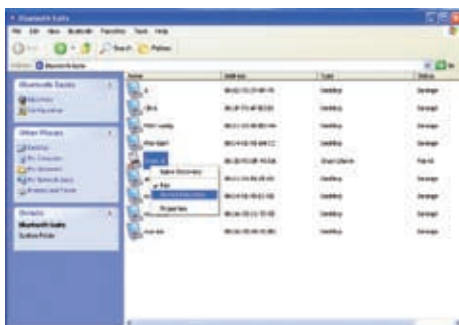
Right-click a Bluetooth device in the list for the following options:

Name Discovery – Displays the Bluetooth device name.

Pair – Pairs with a Bluetooth device.

Service Discovery – Displays the services that the Bluetooth device supports.


Properties – Displays the name, address, type, connection status of the Bluetooth device and the services it supports.

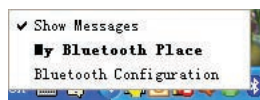


Bluetooth Suite Tray

After you launch the Bluetooth XP Suite, a Bluetooth

icon  appears in the Windows® notification area.

Right-click the Bluetooth icon  to display the following options:



Show Messages – Displays application messages.


My Bluetooth Place – Launches the Bluetooth XP Suite.

Bluetooth Configuration – Launches Bluetooth Suite Configuration which allows you to configure Bluetooth XP Suite settings and Bluetooth profiles. Refer to the section **Bluetooth Suite Configuration** for details.

Bluetooth Suite Configuration

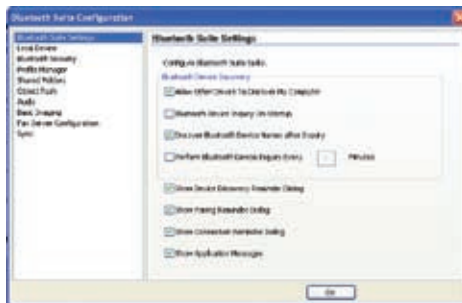
Bluetooth Suite Configuration allows you to configure Bluetooth XP Suite settings such as device discovery and security settings, and various Bluetooth profiles including Object Push, Audio, Basic Imaging, Fax Server, and Sync profiles.

You may do any of the following to launch Bluetooth Suite Configuration:

- Select **Bluetooth Configuration** in the Bluetooth menu.
- Click **Configuration** in the Bluetooth Tasks area.
- Right-click the Bluetooth icon  in the Windows® notification area then select **Bluetooth Configuration**.

Bluetooth Suite Settings

The Bluetooth Suite Settings page allows you to configure the Bluetooth device inquiry method and the kind of messages that are displayed when using the application.



Allow Other Device To Discover My Computer

Tick this box to make your computer discoverable to other Bluetooth devices.

Bluetooth Device Inquiry On Startup

Tick this box to search for Bluetooth devices within range on startup.

Discover Bluetooth Device Names after Inquiry

Tick this box to display Bluetooth device names after the Bluetooth search.

Perform Bluetooth Device Inquiry: x Minutes

Tick this box to set the interval at which your computer runs a Bluetooth search and refreshes the Bluetooth device list. Key in a value between 1 and 10.

Show Device Discovery Reminder Dialog

Tick this box to show the device discovery reminder before searching for Bluetooth devices.



Show Pairing Reminder Dialog

Tick this box to show the pairing reminder before pairing with other Bluetooth devices.



Show Connection Reminder Dialog

Tick this box to show the connection reminder before connecting to other Bluetooth devices.

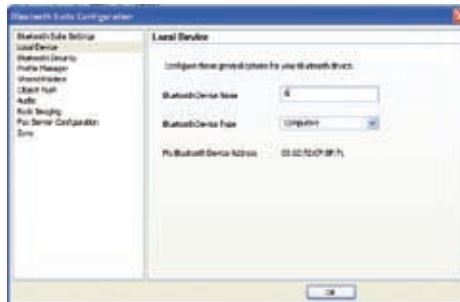


Show Application Messages

Tick this box to show the application messages.

Local Device

The Local Device page allows you to configure the Bluetooth settings on your computer.

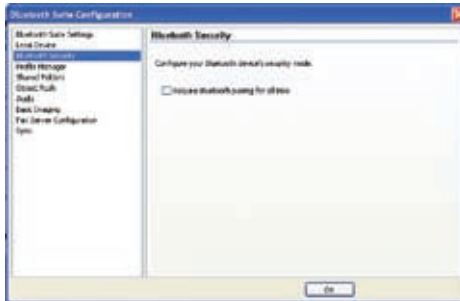


Bluetooth Device Name – customizes the name of your computer.

Bluetooth Device Type – selects the type of your computer.

Bluetooth Security

The Bluetooth Security page allows you to configure the security mode for Bluetooth device connections.



Require Bluetooth pairing for all links

Tick this box to perform pairing on all Bluetooth device connections.

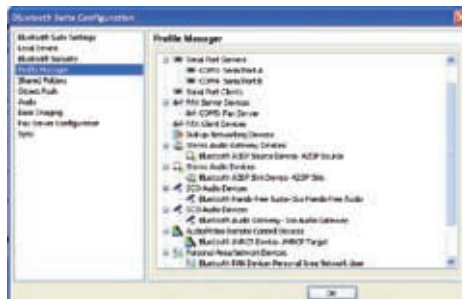
Profile Manager

The Profile Manager page displays the Bluetooth profiles that the Bluetooth XP Suite supports and the devices assigned to the Bluetooth profiles.

A Bluetooth profile is a collection of settings that define standard communication methods for a particular type of Bluetooth device.

Right-click a Bluetooth service to do the following:

- Disable
- Uninstall
- Scan for changes
- Check properties



The Bluetooth XP Suite supports the following Bluetooth profiles:

Human Interface Device Profile (HID)

This profile enables you to connect Bluetooth HID devices such as Bluetooth keyboards, mice, and game controllers to your computer. The Bluetooth XP Suite supports multiple HID connections.

Serial Port Profile (SPP)

This profile enables you to set up virtual serial ports and connect your computer with another Bluetooth enabled device.

Fax Profile (FAX)

This profile enables you to use a FAX gateway to send a Fax message to an arbitrary recipient.

Dial-up Networking Profile (DUN)

This profile enables you to connect your computer to the Internet via a Bluetooth enabled mobile phone.

Advanced Audio Distribution Profile (A2DP)

This profile enables you to stream stereo-quality audio from a source device to a sink device (destination device). A source device delivers an audio stream, while a sink device receives an audio stream. Bluetooth headphones, speakers, and mobile phones are a few examples of the audio devices that use the A2DP profile.

Hands-Free Profile (HFP)

This profile enables you to use a hands-free device such as a Bluetooth headset and a car kit to make and receive calls for a gateway device, typically a mobile phone.

Audio / Video Remote Control Profile (AVRCP)

This profile enables you to use a single Bluetooth remote control device to control the following applications on audiovisual devices:

- Windows® Media Player 11
- Windows® Media Player 10
- Windows® Media Player 9
- Winamp 5.33
- RealPlayer 10.5
- RealPlayer 10

The Bluetooth XP Suite accepts the following commands:

- Play
- Pause
- Stop
- Forward
- Backward
- Volume up
- Volume down

If multiple media applications are running, only one application receives commands.

Personal Area Networking Profile (PAN)

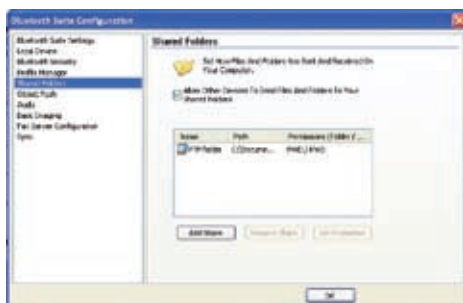
This profile enables you to connect your computer to other Bluetooth enabled devices and transfer files between your computer and these devices.

Hardcopy Cable Replacement Profile (HCRP)

This profile enables you to scan or print files from your computer on a Bluetooth enabled printing device.

Shared Folders

The Shared Folders page allows you to configure the settings for the File Transfer Profile (FTP). The FTP service enables you to browse the shared folder (often named 'FTP folder' on your computer) on an FTP-enabled Bluetooth device that is within range of your computer. You can also transfer files and folders between your computer and the shared folder.



Allow Other Devices To Send Files And Folders To Your Shared Folders

Tick this box to accept files and folders from remote devices and save them to the shared folder on your computer.

Add Share

Creates a new shared folder. You may assign read, write, and delete permissions for the shared folder and the files in it.

Remove Share

Removes an existing shared folder.

Set Properties

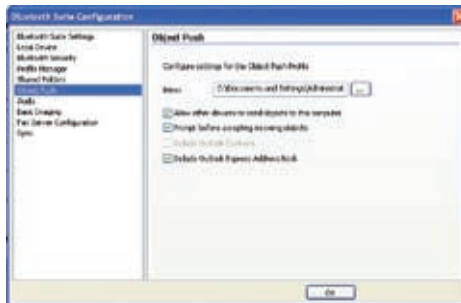
Customizes the name of your shared folder and assigns read, write, and delete permissions for the shared folder and the files in it.

Object Push

The Object Push page allows you to configure the settings for the Object Push Profile (OPP) that enables you to exchange files such as vCards (virtual business cards) and appointments with remote Bluetooth devices.

The following applications support the OPP service:

- Outlook 2007
- Outlook 2003
- Outlook 2002
- Outlook Express 6.0
- Outlook Express 5.0



Inbox

Specifies a folder to save the files that the remote devices send to your computer via the OPP service.

Allow other devices to send objects to this computer

Tick this box to allow remote devices to send objects to your computer via the OPP service.

Prompt before accepting incoming objects

Tick this box if you want Bluetooth XP Suite to prompt you before accepting incoming objects.

Include Outlook Contacts

Tick this box to include Outlook Office contacts in pushing an object.

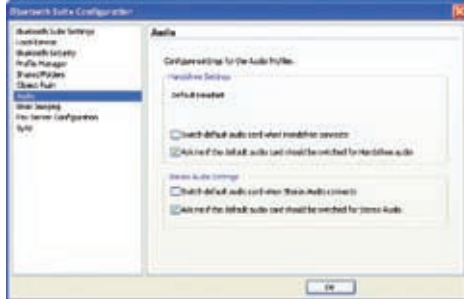
Include Outlook Express Address Book

Tick this box to include Outlook Express Address Book in pushing an object.

If Outlook Office is not installed on your computer, this box is ticked automatically. You can include either Outlook Office Contacts or Outlook Express Address Book, but not both.

Audio

The Audio page allows you to configure the settings for the Advanced Audio Distribution Profile (A2DP).



Switch default audio card when Handsfree connects

Tick this box to switch to the handsfree device.

Ask me if the default audio card should be switched for Handsfree audio

Tick this box if you want Bluetooth XP Suite to ask you if the default audio card should be switched to the handsfree device.

Switch default audio card when Stereo Audio connects

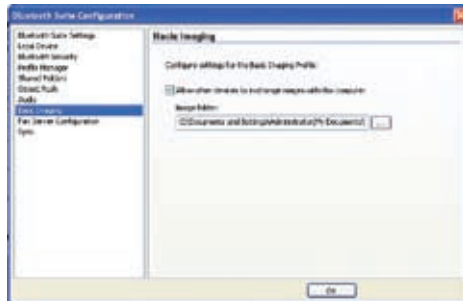
Tick this box to switch to the stereo audio device.

Ask me if the default audio card should be switched for Stereo Audio

Tick this box if you want Bluetooth XP Suite to ask you if the default audio card should be switched to the stereo audio device.

Basic Imaging

The Basic Imaging page allows you to configure the settings for the Basic Imaging Profile (BIP) that enables you to exchange images with remote Bluetooth devices.



Allow other devices to exchange images with this computer

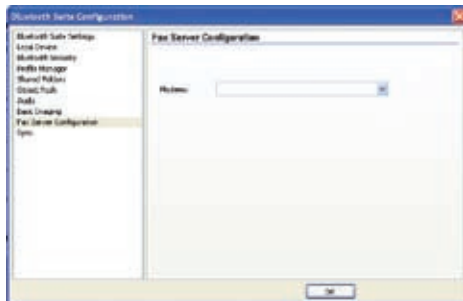
Tick this box to allow remote devices to exchange images with your computer via the BIP service.

Image folder

Specifies a folder to save the images that the remote devices send to your computer via the BIP service.

Fax Server Configuration

The Fax Server Configuration page allows you to configure the settings for the Fax Profile (FAX) which enables you to send and receive Fax messages.



Modems

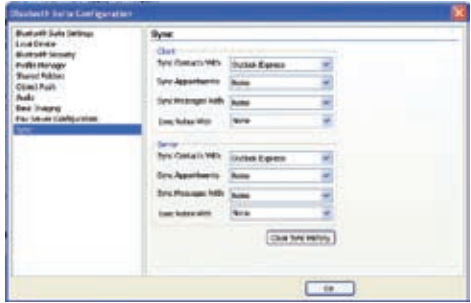
Selects a fax modem from the dropdown list.

Sync

The Sync page allows you to configure the settings for the Synchronization Profile (SYNC) that enables you to synchronize vCards and vCalendars with a remote Bluetooth device.

There are two roles involved in synchronization: client and server. The client is the device requesting or initiating the synchronization. The server is the device that the client is synchronizing with.

The client can synchronize contacts, appointments, messages, and notes with the server.



4 Communicating with a Bluetooth device

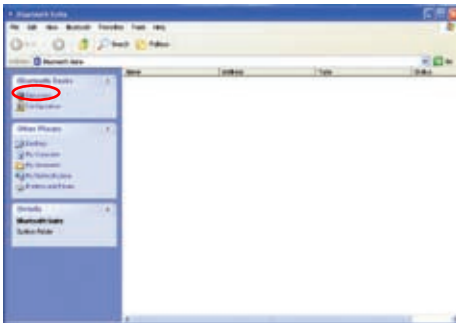
Pairing with a Bluetooth device



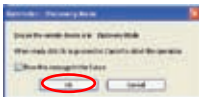
- Before transferring data between your computer and another Bluetooth device, pair your computer with the Bluetooth device.
- Before pairing with a Bluetooth device, ensure that the Bluetooth device is turned on and discoverable. Refer to the documentation that came with the Bluetooth device for instructions on how to make it discoverable.

To pair your computer with another Bluetooth device:

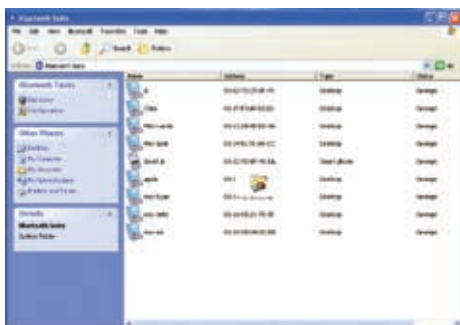
1. Insert the USB Bluetooth adapter into your computer's USB port.
2. Launch the Bluetooth XP Suite.
3. Click **Discovery** in the Bluetooth Tasks area to search for Bluetooth devices within range.



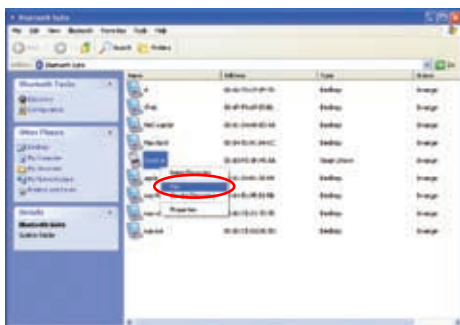
4. Ensure that the Bluetooth device you want to pair with is discoverable. Click **OK**.



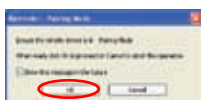
5. Your computer starts searching for other Bluetooth devices that are within range.



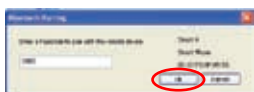
6. When the search is completed, right-click the Bluetooth device then select **pair**.



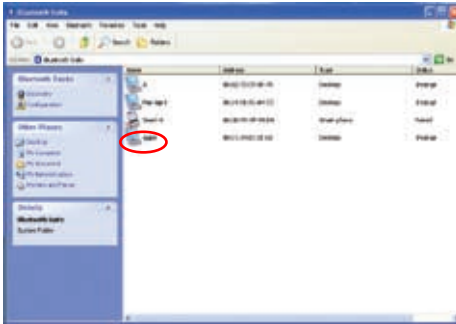
7. Ensure that the Bluetooth device is in pairing mode. Click **OK**.



8. Key in a passcode to pair with the Bluetooth device. The default passcode for USB-BT211 is 0000 (four zeroes). Click **OK**.



9. Key in the same passcode (0000) on the Bluetooth device.
A small red checkmark appears next to the Bluetooth device, indicating that your computer has paired with it successfully.

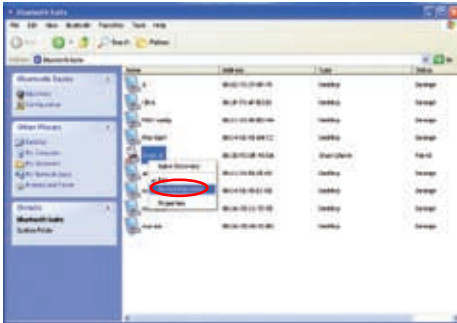


Connecting to a Bluetooth device

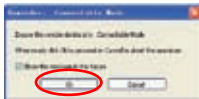
You can connect to other Bluetooth devices using various Bluetooth services.

To connect to a Bluetooth device:

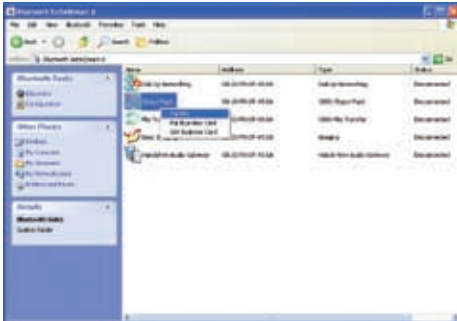
1. Pair your computer with the Bluetooth device.
2. Right-click the Bluetooth device then select **Service Discovery** to display the Bluetooth services that it supports.



3. Ensure that the Bluetooth device is connectable. Click **OK**.



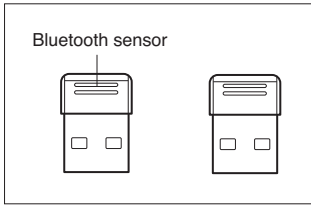
4. Select the Bluetooth service that you want to use.



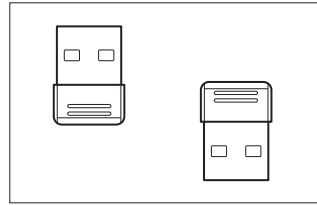
The Bluetooth services available vary depending on the Bluetooth device.



To achieve the best signal quality when transferring data between two computers using two USB-BT211 USB Bluetooth adapters, we suggest that the Bluetooth sensors be placed in either Position 1 or Position 2:



Position 1



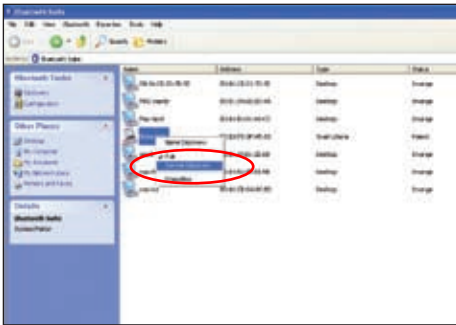
Position 2

Using the Dial-up Networking Profile (DUN)

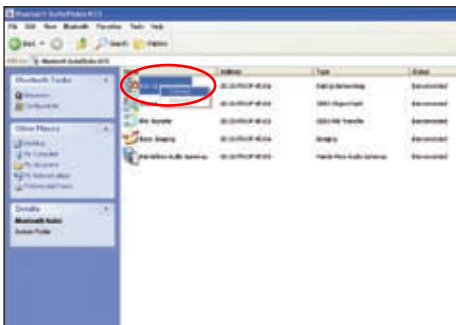
Connect your computer to the Internet using a Bluetooth enabled mobile phone that supports the Dial-up Networking Profile (DUN). The Bluetooth enabled mobile phone acts as a dial-up modem for the Internet connection.

To use DUN:

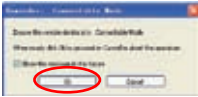
1. Pair your computer with the Bluetooth mobile phone that you want to use as the dial-up modem.
2. Right-click the Bluetooth mobile phone, then select **Service Discovery** to display the Bluetooth services that it supports.



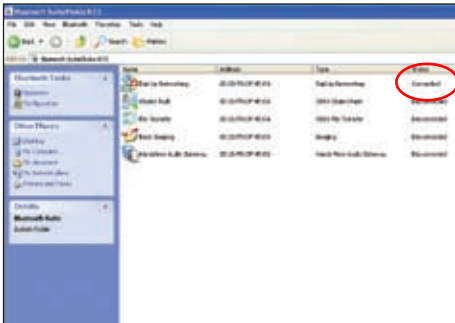
3. Right-click **Dial-Up Networking**, then select **Connect**.



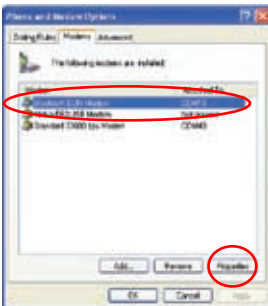
4. Ensure that the Bluetooth mobile phone is connectable. Click **OK**.



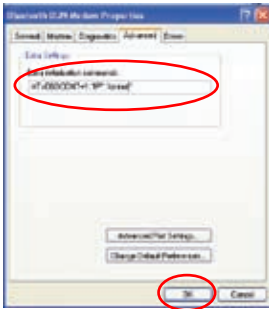
The Dial-Up Networking status shows Connected.



5. Go to **Start > Control Panel > Phone and Modem Options**. On the **Modems** tab, select **Bluetooth DUN Modem**, then click **Properties**.

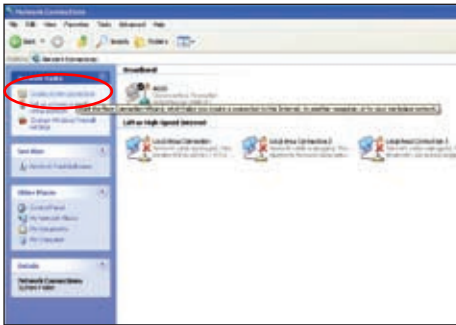


6. On the **Advanced** tab, key in the extra initialization commands. Click **OK** to save the changes.



The extra initialization commands vary with different mobile phone manufacturers. Contact your mobile phone manufacturer for the commands.

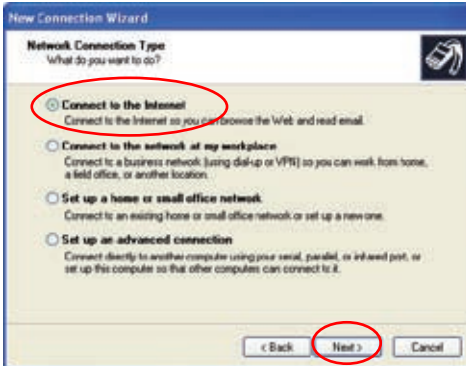
7. Click **Start > Control Panel > Network and Internet Connections > Network Connections**, then click **Create a new connection** in the Network Tasks area.



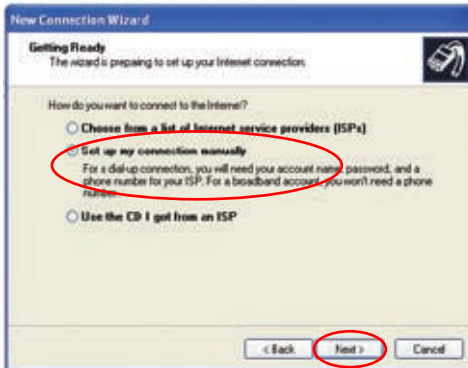
8. The New Connection Wizard launches. Click **Next** to continue.



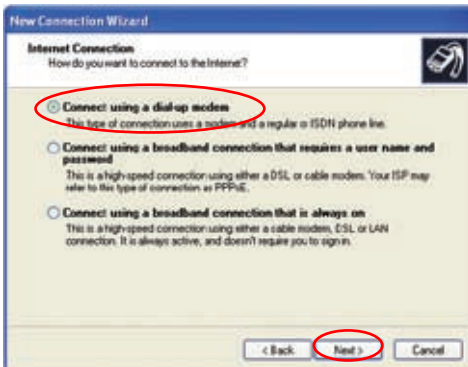
9. Select **Connect to the Internet**, then click **Next**.



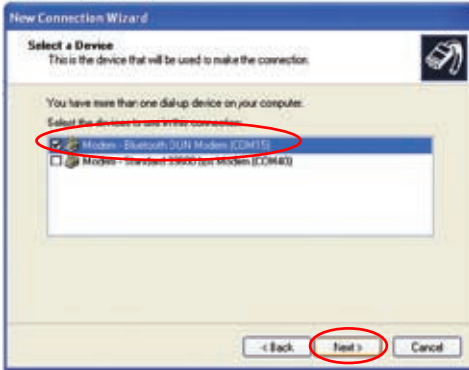
10. Select **Set up my connection manually**, then click **Next**.



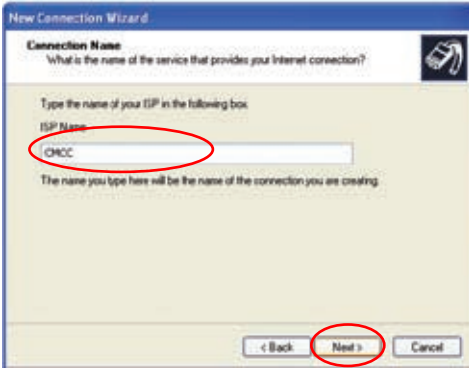
11. Select **Connect using a dial-up modem**, then click **Next**.



12. Select **Modem - Bluetooth DUN Modem (COM15)**, then click **Next**.



13. Create a name for your ISP, then click **Next**.



14. Key in the phone number to dial, then click **Next**.



Contact your mobile phone operator for the phone number.

The screenshot shows the 'New Connection Wizard' dialog box with the title 'Phone Number to Dial' and the question 'What is your ISP's phone number?'. Below the question, it says 'Type the phone number below:' followed by a text input field containing '1938'. A red circle highlights the input field. Below the field, there is a note: 'You might need to include a "1" or the area code, or both. If you are not sure you need the extra numbers, dial the phone number on your telephone. If you hear a modem sound, the number dialed is correct.' At the bottom right, there are three buttons: '< Back', 'Next >', and 'Cancel'. The 'Next >' button is circled in red.

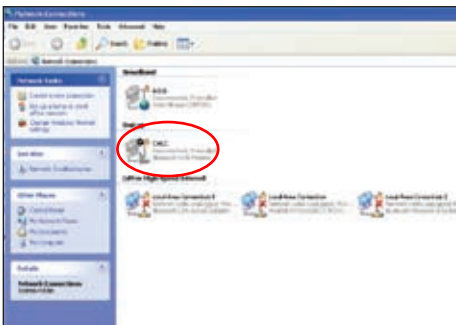
15. Leave the fields in this screen blank. Click **Next**.

The screenshot shows the 'New Connection Wizard' dialog box with the title 'Internet Account Information' and the instruction 'You will need an account name and password to sign in to your Internet account.' Below this, it says 'Type an ISP account name and password, then write down this information and store it in a safe place. (If you have forgotten an existing account name or password, contact your ISP.)'. There are three text input fields labeled 'User name', 'Password', and 'Confirm password', all of which are empty. Below the fields are two checked checkboxes: 'Use this account name and password when anyone connects to the Internet from the computer' and 'Make this the default Internet connection'. At the bottom right, there are three buttons: '< Back', 'Next >', and 'Cancel'. The 'Next >' button is circled in red.

16. The dial-up connection setup is completed. Click **Finish** to exit the wizard.



17. Click **Start > Control Panel > Network and Internet Connections > Network Connections**. You can find the icon of the newly created dial-up connection is added in the **Dial-up** category. Double-click the icon.



18. Click **Dial** to connect your computer to the Internet.



Notices

Federal Communications Commission Statement

This device complies with Part 15 of the FCC Rules. Operation is subject to the following two conditions:

- This device may not cause harmful interference.
- This device must accept any interference received including interference that may cause undesired operation.

This equipment has been tested and found to comply with the limits for a class B digital device, pursuant to part 15 of the FCC Rules. These limits are designed to provide reasonable protection against harmful interference in a residential installation.

This equipment generates, uses and can radiate radio frequency energy and, if not installed and used in accordance with the instructions, may cause harmful interference to radio communications. However, there is no guarantee that interference will not occur in a particular installation. If this equipment does cause harmful interference to radio or television reception, which can be determined by turning the equipment off and on, the user is encouraged to try to correct the interference by one or more of the following measures:

- Reorient or relocate the receiving antenna.
- Increase the separation between the equipment and receiver.
- Connect the equipment into an outlet on a circuit different from that to which the receiver is connected.
- Consult the dealer or an experienced radio/TV technician for help.



Any changes or modifications not expressly approved by the party responsible for compliance could void the user's authority to operate the equipment.

Prohibition of Co-location

This device and its antenna(s) must not be co-located or operating in conjunction with any other antenna or transmitter.

Safety Information

To maintain compliance with FCC's RF exposure guidelines, this equipment should be installed and operated with minimum distance 20cm between the radiator and your body. Use on the supplied antenna.

Declaration of Conformity for R&TTE directive 1999/5/EC

Essential requirements – Article 3

Protection requirements for health and safety – Article 3.1a

Testing for electric safety according to EN 60950-1 has been conducted. These are considered relevant and sufficient.

Protection requirements for electromagnetic compatibility – Article 3.1b

Testing for electromagnetic compatibility according to EN 301 489-1 and EN 301 489-17 has been conducted. These are considered relevant and sufficient.

Effective use of the radio spectrum – Article 3.2

Testing for radio test suites according to EN 300 328- 2 has been conducted. These are considered relevant and sufficient.

CE Mark Warning

This is a Class B product, in a domestic environment, this product may cause radio interference, in which case the user may be required to take adequate measures.

DGT warning

經型式認證合格之低功率射頻電機，非經許可，公司、商號或使用者均不得擅自變更頻率、加大功率或變更原設計之特性及功能。

低功率射頻電機之使用不得影響飛航安全及干擾合法通信；經發現有干擾現象時，應立即停用，並改善至無干擾時方得繼續使用。

前項合法通信，指依電信法規定作業之無線電通信。

低功率射頻電機須忍受合法通信或工業、科學及醫療用電波輻射性電機設備之干擾。

REACH

Complying with the REACH (Registration, Evaluation, Authorisation, and Restriction of Chemicals) regulatory framework, we published the chemical substances in our products at ASUS REACH website at <http://green.asus.com/english/REACH.htm>.

ASUS Contact information

ASUSTeK COMPUTER INC. (Asia Pacific)

Address 15 Li-Te Road, Peitou, Taipei, Taiwan 11259
Website www.asus.com.tw

Technical Support

Telephone +886228943447
Support Fax +886228907698
Software download [support.asus.com*](http://support.asus.com)

ASUS COMPUTER INTERNATIONAL (America)

Address 800 Corporate Way, Fremont, CA 94539, USA
Telephone +15029550883
Fax +15029338713
Website usa.asus.com
Software download [support.asus.com*](http://support.asus.com)

ASUS COMPUTER GmbH (Germany and Austria)

Address Harkort Str. 21-23, D-40880 Ratingen, Germany
Fax +492102959911
Online contact www.asus.com.de/sales

Technical Support

Telephone (Component) +491805010923
Telephone (System/Notebook/Eee/LCD) +491805010920
Fax +492102959911
Online support [support.asus.com*](http://support.asus.com)

* Available on this site is an online Technical Inquiry Form that you can fill out to contact technical support.

Manufacturer:	ASUSTeK Computer Inc. Tel: +886-2-2894-3447 Address: No. 150, LI-TE RD., PEITOU, TAIPEI 112, TAIWAN
Authorised representative in Europe:	ASUS Computer GmbH Address: HARKORT STR. 21-23, 40880 RATINGEN, GERMANY
Authorised distributors in Turkey:	BOGAZICI BIL GISAYAR SAN. VE TIC. A.S. Tel: +90 212 3311000 Address: AYAZAGA MAH. KEMERBURGAZ CAD. NO.10 AYAZAGA/ISTANBUL
	INDEX BILGISAYAR SISTEMLERI MUHENDISLIK SAN. VE TIC. A.S. Tel: +90 212 3312121 Address: AYAZAGA MAH. CENDERE YOLU NO.9 AYAZAGA/ISTANBUL

EEE Yönetmeliğine Uygundur.

Free Manuals Download Website

<http://myh66.com>

<http://usermanuals.us>

<http://www.somanuals.com>

<http://www.4manuals.cc>

<http://www.manual-lib.com>

<http://www.404manual.com>

<http://www.luxmanual.com>

<http://aubethermostatmanual.com>

Golf course search by state

<http://golfingnear.com>

Email search by domain

<http://emailbydomain.com>

Auto manuals search

<http://auto.somanuals.com>

TV manuals search

<http://tv.somanuals.com>