



8/16 Port KVM over the NET™
KN2108 / KN2116
User Manual



www.altusen.com

2005-08-24

Regulatory Information

1. This is an FCC Class A product. In a domestic environment this product may cause radio interference in which case the user may be required to take adequate measures.

This equipment has been tested and found to comply with the limits for a Class A digital device, pursuant to Part 15 of the FCC Rules. These limits are designed to provide reasonable protection against harmful interference when the equipment is operated in a commercial environment. This equipment generates, uses and can radiate radio frequency energy and, if not installed and used in accordance with the instruction manual, may cause harmful interference to radio communications. Operation of this equipment in a residential area is likely to cause harmful interference in which case the user will be required to correct the interference at his own expense.

2. All contents of this package, including products, packing materials and documentation comply with ROHS.



User Notice

All information, documentation, and specifications contained in this manual are subject to change without prior notification by the manufacturer. The manufacturer makes no representations or warranties, either expressed or implied, with respect to the contents hereof and specifically disclaims any warranties as to merchantability or fitness for any particular purpose. Any of the manufacturer's software described in this manual is sold or licensed 'as is'. Should the programs prove defective following their purchase, the buyer (and not the manufacturer, its distributor, or its dealer), assumes the entire cost of all necessary servicing, repair and any incidental or consequential damages resulting from any defect in the software.

The manufacturer of this system is not responsible for any radio and/or TV interference caused by unauthorized modifications to this device. It is the responsibility of the user to correct such interference.

The manufacturer is not responsible for any damage incurred in the operation of this system if the correct operational voltage setting was not selected prior to operation. **PLEASE VERIFY THAT THE VOLTAGE SETTING IS CORRECT BEFORE USE.**

Safety Instructions

General

- ◆ Read all of these instructions. Save them for future reference.
- ◆ Follow all warnings and instructions marked on the device.
- ◆ Do not place the device on any unstable surface (cart, stand, table, etc.). If the device falls, serious damage will result.
- ◆ Do not use the device near water.
- ◆ Do not place the device near, or over, radiators or heat registers.
- ◆ The device cabinet is provided with slots and openings to allow for adequate ventilation. To ensure reliable operation, and to protect against overheating, these openings must never be blocked or covered.
- ◆ The device should never be placed on a soft surface (bed, sofa, rug, etc.) as this will block its ventilation openings. Likewise, the device should not be placed in a built in enclosure unless adequate ventilation has been provided.
- ◆ Never spill liquid of any kind on the device.
- ◆ Unplug the device from the wall outlet before cleaning. Do not use liquid or aerosol cleaners. Use a damp cloth for cleaning.
- ◆ The device should be operated from the type of power source indicated on the marking label. If you are not sure of the type of power available, consult your dealer or local power company.
- ◆ The device is equipped with a 3-wire grounding type plug. This is a safety feature. If you are unable to insert the plug into the outlet, contact your electrician to replace your obsolete outlet. Do not attempt to defeat the purpose of the grounding-type plug. Always follow your local/national wiring codes.
- ◆ Do not allow anything to rest on the power cord or cables. Route the power cord and cables so that they cannot be stepped on or tripped over.
- ◆ If an extension cord is used with this device make sure that the total of the ampere ratings of all products used on this cord does not exceed the extension cord ampere rating. Make sure that the total of all products plugged into the wall outlet does not exceed 15 amperes.

- ◆ To help protect your system from sudden, transient increases and decreases in electrical power, use a surge suppressor, line conditioner, or un-interruptible power supply (UPS).
- ◆ Position system cables and power cables carefully; Be sure that nothing rests on any cables.
- ◆ When connecting or disconnecting power to hot-pluggable power supplies, observe the following guidelines:
 - ◆ Install the power supply before connecting the power cable to the power supply.
 - ◆ Unplug the power cable before removing the power supply.
 - ◆ If the system has multiple sources of power, disconnect power from the system by unplugging all power cables from the power supplies.
- ◆ Never push objects of any kind into or through cabinet slots. They may touch dangerous voltage points or short out parts resulting in a risk of fire or electrical shock.
- ◆ Do not attempt to service the device yourself. Refer all servicing to qualified service personnel.
- ◆ If the following conditions occur, unplug the device from the wall outlet and bring it to qualified service personnel for repair.
 - ◆ The power cord or plug has become damaged or frayed.
 - ◆ Liquid has been spilled into the device.
 - ◆ The device has been exposed to rain or water.
 - ◆ The device has been dropped, or the cabinet has been damaged.
 - ◆ The device exhibits a distinct change in performance, indicating a need for service.
 - ◆ The device does not operate normally when the operating instructions are followed.
- ◆ Only adjust those controls that are covered in the operating instructions. Improper adjustment of other controls may result in damage that will require extensive work by a qualified technician to repair.

Rack Mounting

- ◆ Before working on the rack, make sure that the stabilizers are secured to the rack, extended to the floor, and that the full weight of the rack rests on the floor. Install front and side stabilizers on a single rack or front stabilizers for joined multiple racks before working on the rack.
- ◆ Always load the rack from the bottom up, and load the heaviest item in the rack first.
- ◆ Make sure that the rack is level and stable before extending a device from the rack.
- ◆ Use caution when pressing the device rail release latches and sliding a device into or out of a rack; the slide rails can pinch your fingers.
- ◆ After a device is inserted into the rack, carefully extend the rail into a locking position, and then slide the device into the rack.
- ◆ Do not overload the AC supply branch circuit that provides power to the rack. The total rack load should not exceed 80 percent of the branch circuit rating.
- ◆ Ensure that proper airflow is provided to devices in the rack.
- ◆ Do not step on or stand on any device when servicing other devices in a rack.

Package Contents

The complete KN2108 / KN2116 package consists of:

- ◆ 1 KN2108 or KN2116 KVM over the NET™ KVM Switch
- ◆ 1 Power Cord
- ◆ 1 User Manual
- ◆ 1 Rack Mount Kit (4 pcs.)
- ◆ 1 Footpad Set (4 pcs.)
- ◆ 1 Quick Start Guide
- ◆ 1 Registration Card

Check to make sure that all of the components are present and in good order. If anything is missing, or was damaged in shipping, contact your dealer.

Read this manual thoroughly and follow the installation and operation procedures carefully to prevent any damage to the switch or to any other devices on the KN2108 / KN2116 installation.

© Copyright 2004-2005 ATEN® International Co., Ltd.
Manual Part No. PAPE-XXXX-XXXX
Printed in Taiwan 08/2005

ATEN and the ATEN logo are registered trademarks of ATEN International Co., Ltd. All rights reserved. All other brand names and trademarks are the registered property of their respective owners.

Contents

Regulatory Information	ii
User Notice	iii
Safety Instructions	iv
General	iv
Rack Mounting	vi
Package Contents	vii
About This Manual	xi
Overview	xi
Conventions	xii
Getting Help	xii

Chapter 1

Introduction

Overview	1
Features	3
System Requirements	4
Remote Computers	4
Computers	4
Cables	5
Components	6
Front View	6
Rear View	8

Chapter 2

Hardware Setup

Overview	11
Before You Begin	11
Stacking	12
Rack Mounting	13
Single Station Installation	15
Two Stage Installation	18
Hot Plugging	20
Port ID Numbering	20
Powering Off and Restarting	21
Port Selection	21

Chapter 3**Administration**

Overview	23
The Local Console	23
The Administration Page	25
General	25
User Management:	26
Network	28
Access Port	28
IP Address	29
Log Server	29
Security	30
Customization	32
Set Port	33
Quick View Status	33
Port Name	34
Date/Time	35
Upgrading the Firmware	36

Chapter 4**Browser Operation**

Overview	37
Logging In	37
Web Page Layout	39
The General Dialog Box	39
Web Page Icons	40
Web Page Buttons	40

Chapter 5**The Windows Client**

Activating the OSD	41
The Main Page	43
Port Operation	45
The OSD Toolbar	45
Recalling the OSD	45
The Toolbar Icons	46
Hotkey Operation	47
Windows Client Control Panel	49
Hotkeys	50
Video Adjustment	52
Panel Array Mode	55
Keyboard and Mouse Considerations	57
The Configuration Page	59

Chapter 6

The Java Client

Activating the OSD	61
The Java Client Control Panel	62
Video Adjustment	63
Keyboard	63
Mouse	64
Lock Key LEDs	64
Resolution	64
Panel	65
Port Operation	66
Hotkey Operation	66
The Configuration Page	66

Chapter 7

The Log File

The Main Screen	67
---------------------------	----

Chapter 8

The Log Server

Installation	69
Starting Up	70
The Menu Bar	71
Configure	71
Events	72
Options	74
The KN2018 / KN2116 Main Screen	75
Overview	75
The List Panel	76
The Tick Panel	76

Appendix

Troubleshooting	77
General Operation	77
The Java Client	77
The Windows Client	78
Specifications	80
OSD Factory Default Settings	81
Administrator Login Failure	82
ALTUSEN Technical Support	83
Product Information	83
ALTUSEN Authorized Resellers	83
Limited Warranty	84

About This Manual

This User Manual is provided to help you get the most from your KN2108 / KN2116 system. It covers all aspects of installation, configuration and operation. An overview of the information found in the manual is provided below.

Overview

Chapter 1, Introduction, introduces you to the KN2108 / KN2116 System. Its purpose, features and benefits are presented, and its front and back panel components are described.

Chapter 2, Hardware Setup, provides step-by-step instructions for setting up your installation, and explains some basic operation procedures.

Chapter 3, Administration, explains the administrative procedures that are employed to configure the KN2108 / KN2116's working environment, as well as how to operate the KN2108 / KN2116 from the local console.

Chapter 4, Browser Operation describes how to log into the KN2108 / KN2116 with your browser, and explains the the functions of the icons and buttons on the KN2108 / KN2116 web page.

Chapter 5, The Windows Client, explains how to connect to the KN2108 / KN2116 with the Windows Client software, and describes how to use the OSD to access and control the computers connected to the switch.

Chapter 6, The Java Client, describes how to connect to the KN2108 / KN2116 with the Java Client software, and explains how to use the OSD to access and control the computers connected to the switch.

Chapter 7, The Log File, describes how to use the log file utility to view all the events that take place on the KN2108 / KN2116.

Chapter 8, The Log Server, describes how to install and configure the Log Server.

An Appendix at the end of the manual provide technical and other important information regarding the KN2108 / KN2116.

Conventions

This manual uses the following conventions:

- Courier Indicates text that you should key in.
- [] Indicates keys you should press. For example, [Enter] means to press the **Enter** key. If keys need to be *chorded*, they appear together in the same bracket with a plus sign between them: [Ctrl+Alt].
1. Numbered lists represent procedures with sequential steps.
- ◆ Bullet lists provide information, but do not involve sequential steps.
 - > Indicates movement through a menu. For example, Start > Run means to open the *Start* menu, and then select *Run*.
 - ▲ Indicates critical information.

Getting Help

For additional help, advice, and information, ALTUSEN provides several support options. If you need to contact ALTUSEN technical support with a problem, please have the following information ready beforehand:

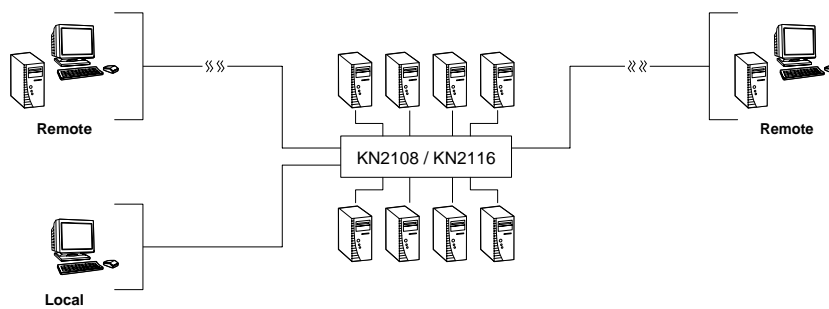
- ◆ Product model number, serial number, and date of purchase.
- ◆ Your computer configuration, including operating system, revision level, expansion cards, and software.
- ◆ Any error messages displayed at the time the error occurred.
- ◆ The sequence of operations that led up to the error.
- ◆ Any other information you feel may be of help.

Chapter 1. Introduction

Overview

The KN2108 and KN2116 are IP-based KVM control units that allow both local and remote operators to monitor and access multiple computers from a single console. For example, a single KN2116 can control up to 16 computers. By cascading up to 16 KH88 KVM switches from its KVM ports, up to 128 computers can be controlled on a complete installation.

Since the switches use TCP/IP for their communications protocol, they can be accessed from any computer on the Net - whether that computer is located down the hall, down the street, or half-way around the world.



Access to any computer connected to the installation from the local console is easily accomplished either by entering *hotkey* combinations from the keyboard, or by means of a powerful mouse driven OSD (On Screen Display) menu system. A convenient *Auto Scan* feature also permits automatic scanning and monitoring of the activities of all computers running on the installation one by one.

Remote consoles connect to the KN2108 or KN2116 via its IP address. Software utilities provided with the switch make remote access smooth and efficient. A menu driven OSD *Administration* function enables system administrators to handle a multitude of maintenance tasks with ease - from installing and running GUI applications, to BIOS level troubleshooting, routine monitoring, concurrent maintenance, system administration, rebooting and even pre-booting functions.

Remote operators can log in from anywhere on the net via their browser. Once they successfully log in, operators can take control using either the *Windows Client* or *Java Client* utility. Inclusion of a Java-based client allows the switches work with Java 2 enabled operating systems.

The client software allows operators to exchange keyboard, video and mouse signals with the computers attached to the KN2108 or KN2116 just as if they were present locally and working on the equipment directly. With the *Panel Array* feature, the video output of up to 8 or 16 computers can be displayed at the same time.

The switches feature RJ-45 connectors allowing them to use CAT 5 cable to link to the computers. This space-saving innovation means a full 8 or 16 port switch can be conveniently installed in a 1U system rack, and the installation can take advantage of the internal network wiring built into most modern commercial buildings..

Setup is fast and easy; plugging cables into their appropriate ports is all that is entailed. Because the switches intercept keyboard input directly, there is no need to get involved in complex software installation routines, or to be concerned with incompatibility problems.

Since the firmware is upgradeable over the Net, you can stay current with the latest functionality improvements simply by downloading firmware updates from our website as they become available.

With its advanced security features, the KN2108 and KN2116 provide the fastest, most reliable, most cost effective way to remotely access and manage widely distributed multiple computer installations.

Features

- ◆ 8 (KN2108) or 16 (KN2116) port, remote access, KVM switch - monitor and control up to 8 or 16 computers from a single KVM (Keyboard, Video, Mouse) console
- ◆ Supports 3 bus sessions (1 Local; 2 Remote) - 3 different users can access 3 different ports at the same time
- ◆ No distance limitations - remotely access computers via LAN, WAN, or the Internet; control your installation when and where you want - from down the hall, down the street, or half-way around the world
- ◆ Analog access at the rack; anywhere, anytime digital access over IP
- ◆ Internet browser access; Windows client and Java client provided; Java client works with all operating systems
- ◆ Graphical OSD and graphical toolbars for convenient, user friendly operation
- ◆ Uses the same management interface for the data center and branch offices
- ◆ Panel Array Mode - view all 8 or 16 ports at the same time
- ◆ Up to 32 (KN2108) or 64 (KN2116) user accounts (graphic OSD and Windows based)
- ◆ Three level security: multiadministrator; mutiuser; multiviewer
- ◆ Advanced security features include password protection and advanced encryption technologies - 1024 bit RSA; 56 bit DES; 256 bit AES; and 128 bit SSL
- ◆ Flash upgradeable firmware
- ◆ “Over IP” single solution - remote power control for attached *Power over the Net™* devices - BIOS level rebooting / power cycling
- ◆ Remote Dial In support
- ◆ Supports all major server platforms and VT100 based serial devices
- ◆ Supports multiplatform server environments including PS/2, USB, and Sun
- ◆ Supports 10Base-T, 100Base-T, TCP/IP, HTTP
- ◆ High video resolution: up to 1280 x 1024 @ 75Hz (Remote consoles); 1600 x 1200 @ 60Hz (Local console)
- ◆ Designed for high-density installations: Fits in 1U racks - front panel can separate from main chassis for convenient front and rear installation - RJ-45 connectors allow for 16 ports - CAT 5 cable reduces cable bulk

System Requirements

Remote Computers

- ◆ For best results, computers that remotely access the switch should have at least a P III 1 GHz processor, with their screen resolution set to 1024 x 768.
- ◆ Users who want to access the switch with the Windows Client must have DirectX 7.0 or higher installed.
If you don't already have it, DirectX is available for free download from Microsoft's web site: <http://www.microsoft.com/downloads>.
- ◆ Users who want to access the switch with the Java Client must have Sun's Java 2 (1.4 or higher) runtime environment installed. Java is available for free download from the Sun Java website: <http://java.sun.com>
- ◆ Browsers must support 128 bit SSL encryption.

Computers

The following equipment must be installed on the computers that connect to the KN2108 or KN2116's KVM ports:

- ◆ A VGA, SVGA or Multisync port.
- ◆ A 6-pin mini-DIN (PS/2 style) keyboard port.
- ◆ A 6-pin mini-DIN (PS/2 Style) mouse port.

Cables

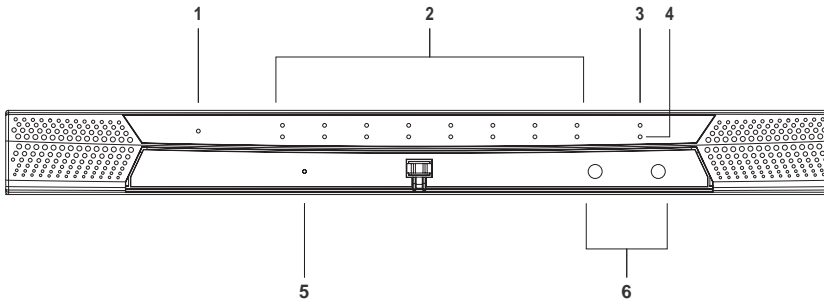
The following cables are required for use with the KN2116:

Function		Cable
KN2116 to KVM Adapter Cable (see label 2, p. 16)		Cat 5 (or higher) cable
KVM Adapter Cable to cascaded KH88		KA9120
KVM Adapter Cable to computers	For PS/2 ports	KA9120
	For USB ports	KA9170
	For Sun Legacy Computers	KA9130
	For Sun USB Computers	KA9131

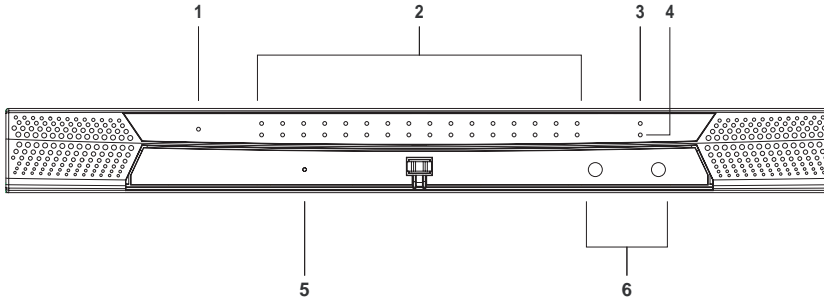
Components

Front View

KN2108:



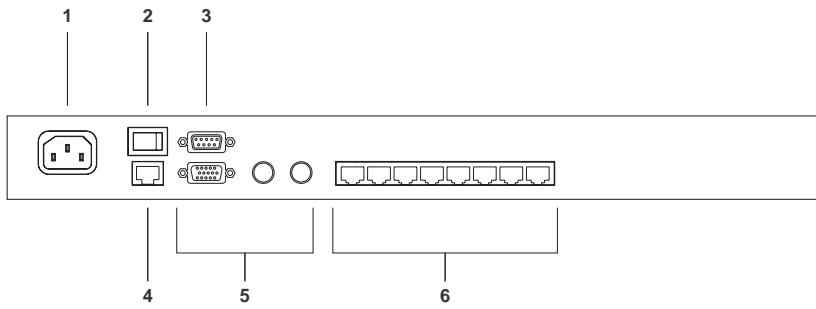
KN2116:



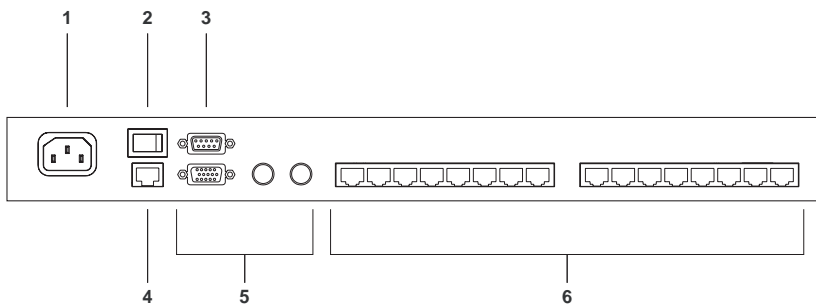
No.	Component	Description
1	Power LED	Lights when the KN2116 is powered up and ready to operate.
2	Port LEDs	<p>The Port LEDs provide status information about their corresponding CPU Ports. There is one pair of LEDs for each Port. The one on the top is the <i>On Line</i> LED; the one on the bottom is the <i>Selected Port</i> LED:</p> <ul style="list-style-type: none"> ♦ An <i>On Line</i> LED lights GREEN to indicate that the computer attached to its corresponding port is up and running. ♦ A <i>Selected</i> LED lights ORANGE to indicate that the computer attached to its corresponding port is the one that has the KVM focus. The LED is steady under normal conditions, but flashes when its port is accessed under <i>Auto Scan Mode</i> (see p. 60). ♦ When the KN2116 is first powered on, the <i>On Line</i> and <i>Selected</i> LEDs blink in sequence as the Switch performs a self-test.
3	Link LED	Flashes GREEN to indicate that a Client program is accessing the device.
4	10/100 Mbps Data LED	<ul style="list-style-type: none"> ♦ The LED lights ORANGE to indicate 10 Mbps data transmission speed. ♦ The LED lights GREEN to indicate 100 Mbps data transmission speed.
5	Reset Switch	<ul style="list-style-type: none"> ♦ Pressing and holding this switch in while powering on the KN2116 restores the switch to the factory installed firmware version. ♦ Pressing and holding this switch in for more than two seconds performs a system reset. <p>Note: This switch is recessed and must be pushed with a thin object - such as the end of a paper clip, or a ballpoint pen.</p>
6	Port Switching Buttons	<ul style="list-style-type: none"> ♦ Press Port DOWN to switch from the current port to the previous port on the installation. ♦ Press Port UP to switch from the current port to the next port on the installation.

Rear View

KN2108:



KN2116:



No.	Component	Description
1	Power Socket	The power cable plugs in here.
2	Power Switch	This standard rocker switch powers the unit on and off.
3	PON Port	This connector is provided for a <i>Power over the Net</i> (PON) unit to plug into. A PON device allows computers attached to the KN2116 to be booted remotely over the net. Contact your dealer for more details.
4	LAN Port	The cable that connects the KN2116 to the Internet plugs in here.
5	Local Console Section	The KN2116 can be accessed via a local console as well as over the Net. The cables for the local console (keyboard, monitor, and mouse) plug in here. Each port is color coded and marked with an appropriate icon to indicate itself.
6	KVM Ports	The CAT 5 cables that link the KN2116 to the KVM Adapter cables that connect to the computers plug in here.

Notes:

Chapter 2.

Hardware Setup

Overview

For convenience and flexibility that allows mixing the PS/2 and USB interfaces, as well as multiple platforms, the KN2108 / KN2116's design utilizes *KVM Adapter Cables*, that serve as intermediaries between the switch and the computers (refer to the installation diagram on p. 16)

A separate KVM adapter cable is required for each computer connection. The model numbers of the KVM adapter cables are given in the *Cables* section on p. 5.

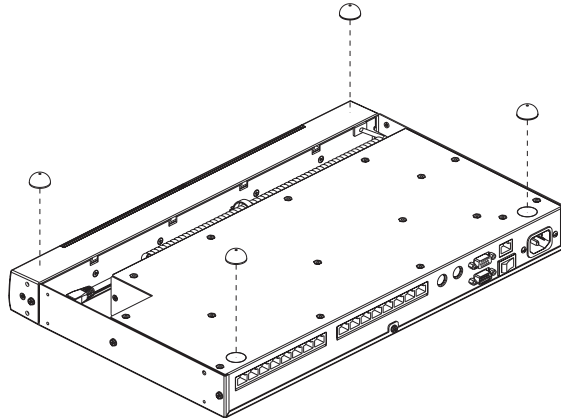
Before You Begin



1. Important safety information regarding the placement of this device is provided on p. iv Please review it before proceeding.
2. Make sure that power to all the devices you will be connecting up have been turned off. You must unplug the power cords of any computers that have the *Keyboard Power On* function.

Stacking

The KN2108 / KN2116 can be placed on any appropriate level surface that can safely support its weight plus the weight of its attached cables. To place the KN2108 / KN2116, or to stack units if you are daisy chaining them, remove the backing material from the bottom of the rubber feet that came with this package, and stick them onto the switch's bottom panel at the corners, as shown in the diagram, below:

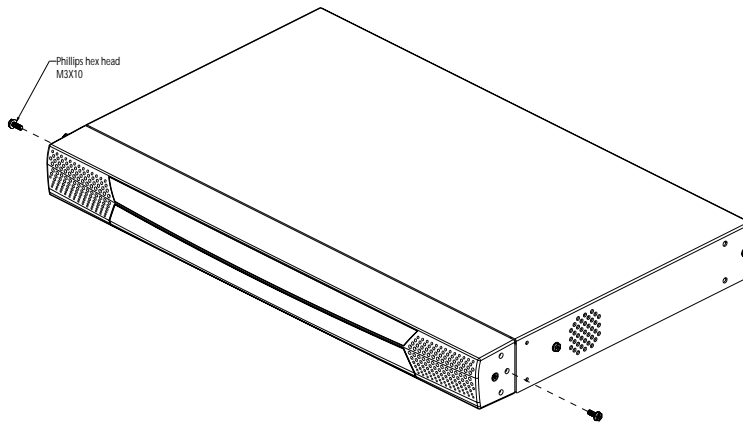


Note: To ensure adequate ventilation, allow at least 5.1 cm on each side, and 12.7cm at the back for power cord and cable clearance.

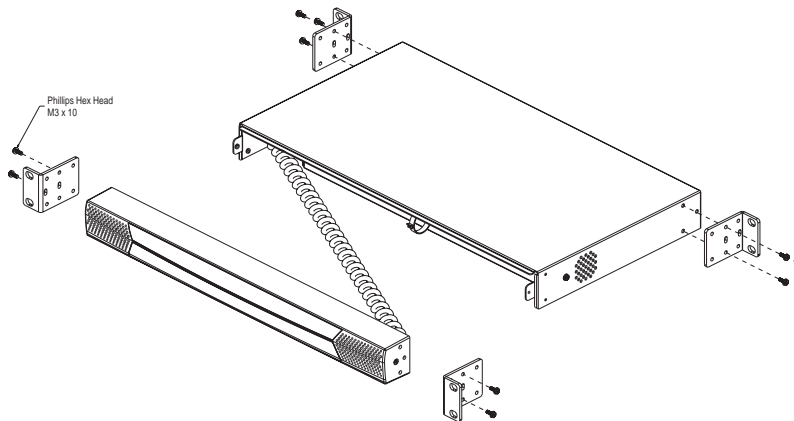
Rack Mounting

The KN2108 / KN2116 can be installed in most standard 19" (1U) racks. To rack mount the unit do the following:

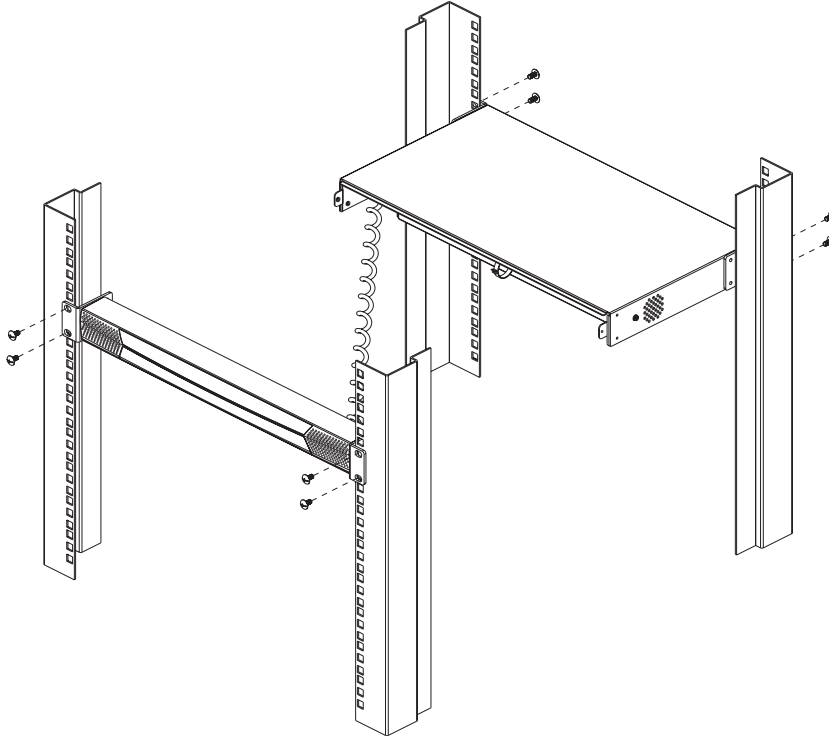
1. Separate the front and rear modules by removing the four module attaching screws:



2. Use the screws you just removed, and the ones supplied with the rack mounting kit to screw the rack mounting brackets into both modules:



3. Position the device in the rack and align the holes in the mounting brackets with the hole in the rack.
4. Screw the mounting brackets to the rack.



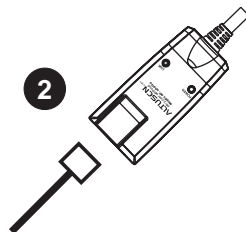
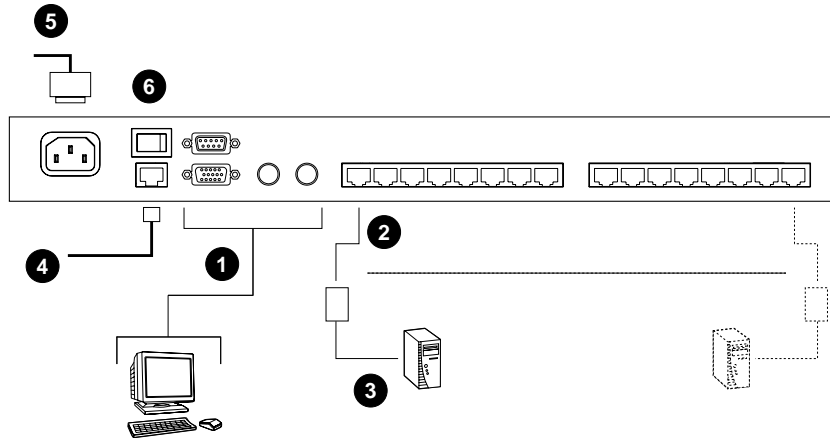
Note: Cage nuts are provided for racks that are not prethreaded.

Single Station Installation

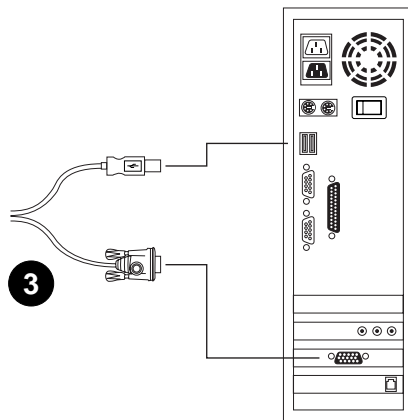
In a Single Stage installation, there are no additional KVM switches cascaded down from the KN2108 / KN2116. To set up a single stage installation, refer to the installation diagrams starting on p. 16 (the numbers in the diagram correspond with the numbers of the instruction steps), and do the following:

1. Plug your Local Console's keyboard, mouse, and monitor into the unit's Console Ports.
Note: The distance between the console and the KN2108 / KN2116 must not exceed 20m.
2. Use Cat. 5 cable to connect any available KVM port to a KVM adapter cable that is appropriate for the computer you are installing (see the table on p. 5 for details).
Note: The distance between the KN2108 / KN2116 and the KVM adapter cable must not exceed 20m.
3. Connect the KVM adapter cable to the computer.
Plug the connectors on the KVM adapter cable into the appropriate ports of the computer you are installing.
4. Plug the cable from the LAN or WAN into the KN2108 / KN2116's RJ-45 socket.
5. Plug the female end of the power cord into the KN2108 / KN2116's Power Socket; plug the male end into an AC power source.
6. Turn on the power to the KN2108 / KN2116.

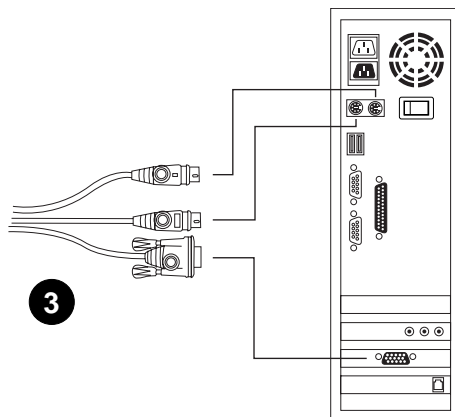
After the KN2108 / KN2116 is powered up, you can turn on the computers.



USB Cable Connection:



PS/2 Cable Connection:



Two Stage Installation

To control even more computers, up to 8 or 16 KH88 units can be cascaded from the KVM ports of the KN2108 or KN2116. As many as 64 (KN2108) or 128 (KN2116) computers can be controlled in a complete two stage installation. The cascaded KH88s that connect back to the KN2108 / KN2116 (First Stage) unit are considered Second Stage units.

Note: The installation cannot be cascaded beyond the second stage.

To set up a two stage installation, refer to the diagram on p. 19, and do the following:

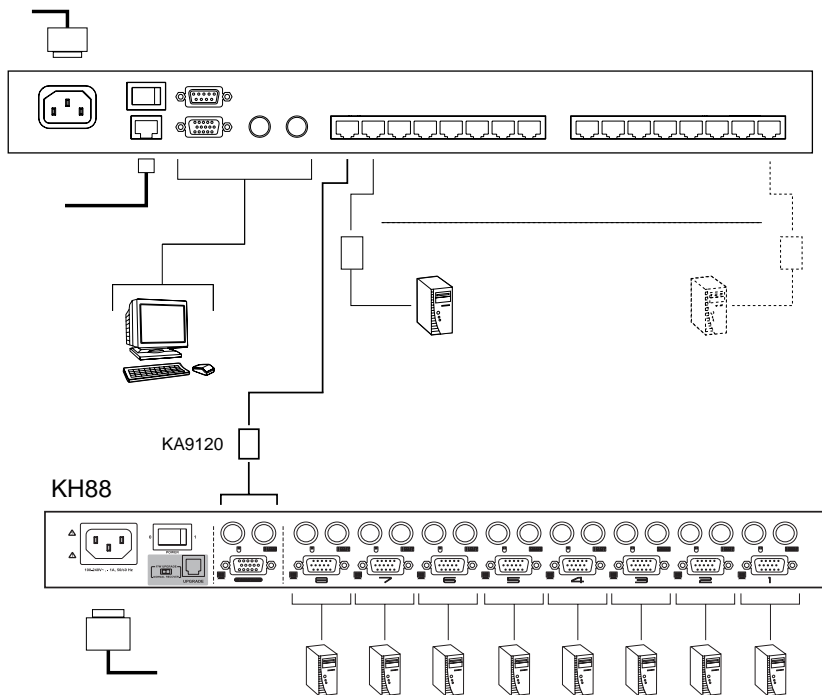
1. Make sure that power to all the devices you will be connecting up, including all preexisting devices on the installation, have been turned off.
2. Use Cat 5 cable to connect any available KVM Port on the First Stage unit (the KN2108 / KN2116) to a PS/2 style KVM adapter cable (as described in the *Cables* section, p. 5)
3. Plug the adapter cable's KVM connectors to the Keyboard, Video, and Mouse Console ports of the Second Stage unit.

Note: The distance between the Second Stage unit and the KN2108 / KN2116 must not exceed 20m.

4. Use KVM cable sets (as described in the *Cables* section of the KH88's User Manual), to connect any available KVM port on the Second Stage unit to the Keyboard, Video, and Mouse ports of the computer you are installing.
5. Plug the power cord that came with the KH88 package into the KH88's Power Socket, and then into an AC power source.
6. Repeat these steps for any other Second Stage units you wish to connect.

7. Power on the Second Stage unit(s), then power on the First Stage unit.
8. Turn on the power to all the computers.

Note: The Power On sequence requires that all Second Stage units be powered on first. After all the Second Stage units have been powered on, the First Stage unit must be powered on next. After the Second and First stage units have been powered on, the computers can be powered on.



Hot Plugging

The KN2108 / KN2116 supports *hot plugging* - components can be removed and added back into the installation by unplugging and replugging their cables from the ports without the need to shut the unit down.

If you change computer positions, however, in order for the OSD menus to correspond to the KVM port changes, you must manually reedit the Port Names to have the OSD to reflect the new Port information. See *Edit Port Names* (p. 33) for details.

Note: If the computer's Operating System does not support hot plugging, this function may not work properly.

Port ID Numbering

Each computer on the installation is assigned a unique Port ID. The Port ID is a one or two segment number that is determined by the Stage Level and KVM Port number of the KVM switch that the computer is connected to.

The first segment represents the KVM Port number of the First Stage unit; the second segment represents the KVM Port number of the Second Stage unit.

A computer attached to a First Stage unit has a one segment Port ID (from 1 - 16), that corresponds to the KVM Port number that the computer is connected to.

A computer attached to a Second Stage unit has a two segment Port ID:

- ◆ The second segment (from 1 - 8), represents the KVM Port number on the Second Stage unit that the computer is connected to. The first segment (from 1 - 16) represents the KVM Port number on the First Stage unit that the Second Stage unit links back to.
- ◆ For example, a Port ID of **12 - 3** refers to a computer that is connected to KVM Port 3 of a Second Stage unit that links back to KVM Port 12 of the First Stage unit.

Powering Off and Restarting

If it becomes necessary to power off the KN2108 / KN2116, or if the switch loses power and needs to be restarted, wait 10 seconds before powering it back on. The computers should not be affected by this, but if any of them should fail, simply restart them.

Port Selection

Port Selection is accomplished by means of the OSD. OSD Operation details are discussed in Chapters 5 and 61.

Notes:

Chapter 3.

Administration

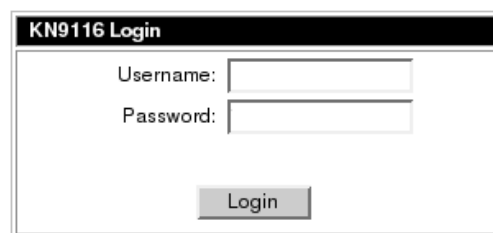
Overview

The OSD's *Administration* page lets the Administrator (and users with administration permission - see *User Management*, p. 26) configure and control overall KN2108 / KN2116 operations. The tab that activates the page is disabled (grayed out) for users who do not have administration permission.

The Local Console

Once the KN2108 / KN2116 has been cabled up, the next step that the Administrator needs to perform is setting the unit up for user operation. The most convenient way to do this for the first time is from the local console.

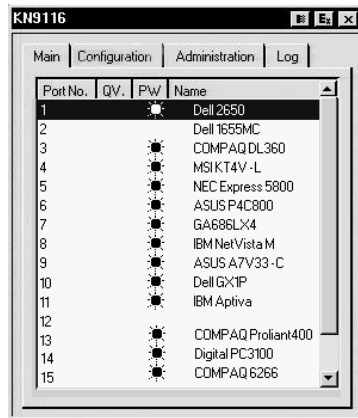
After the local console has been connected up and the KN2108 / KN2116 turned on, a login prompt appears on the console monitor:



The image shows a screenshot of a login dialog box titled "KN9116 Login". It features two input fields: "Username:" and "Password:". Below these fields is a "Login" button. The dialog box has a simple, functional design with a white background and a black title bar.

Since this is the first time you are logging in, use the default Username: *administrator*; and the default Password: *password*. For security purposes, we strongly recommend you use the User Management function (see p. 26) to remove these and give yourself a unique Username and Password with the appropriate permissions.

After you successfully log in, the Local Console OSD comes up:



The OSD consists of four pages:

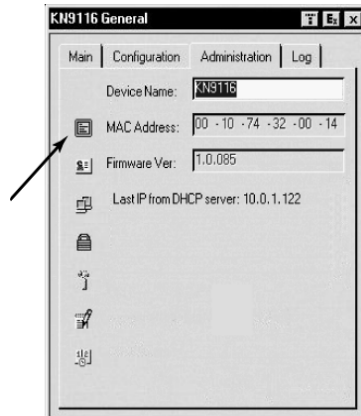
- ◆ The Administration page is the subject of this chapter and is discussed in the sections that follow.
- ◆ The Main and Configuration pages are the ones that govern port access and control. Since they are the same as the ones for the Windows and Java Client OSDs, their use is discussed in Chapters 5 and 6 (see pp. 41 and 61).
- ◆ Clicking the Log tab brings up the contents of the log file. The log file is discussed in Chapter 7.

There are three buttons at the right of the title bar:

- ◆ The one at the left is a *Transparency* button. Clicking this button makes the OSD display semi transparent, allowing whatever the OSD screen is covering to show through. Clicking the button again, returns the OSD screen to normal opacity.
- ◆ Clicking the middle button closes the OSD display and logs you out of the KN2116 session.
- ◆ Clicking the right button closes the OSD display but does not log you out of the session. You can bring the display back with the OSD hotkeys (see OSD Hotkey, p. 60).

The Administration Page

When you click the Administration tab, the Administration page comes up. Each of the administrative functions is represented by an icon at the left of the page. Clicking the icon brings up its associated dialog box. When the Administration page first comes up the *General* dialog appears without having to click its icon:



General

The General Page presents four items of information. This is the same information that displays after you log in from a browser, or when you click the *General* icon at the top left of the browser main page.

The *Device Name* field lets you give the switch a unique name. This can be convenient when you need to differentiate among several devices in multi station installations.

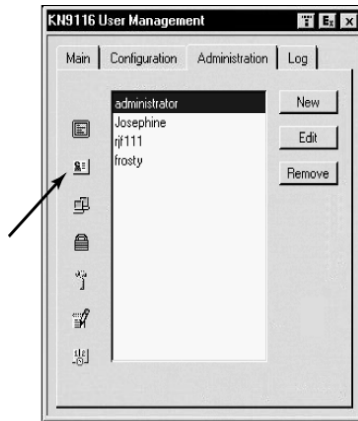
The *MAC Address*: item displays the KN2108 / KN2116's MAC address.

The *Firmware Ver*: item displays the current firmware version number. You can reference it to see if there are newer versions available on the Altusen website.

If the switch is on a network that uses DHCP assigned IP addresses, the *Last IP from DHCP Server*: item is a convenient way of ascertaining what its IP address is, to inform the Users which IP to use when logging in.

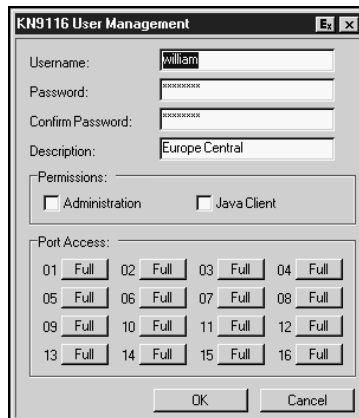
User Management:

The User Management dialogs are used to create and manage user profiles. Up to 64 user profiles can be established.



- ◆ To delete a user profile, select it in the list box, and Click **Remove**.
- ◆ To modify a user profile, select it and Click **Edit**.
- ◆ To add a user, Click **New**.

If you choose *Edit* or *New*, a dialog box similar to the one below appears:

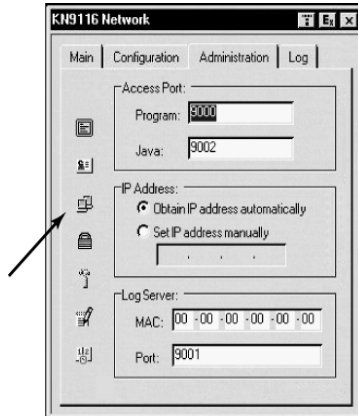


Fill in the required information for a new User profile, or modify the existing information to edit a previous profile. A description of the field headings is given in the table below:

Heading	Description
Username	A minimum of 6 and a maximum of 15 characters is allowed.
Password	A minimum of 8 and a maximum of 15 characters is allowed.
Confirm Password	To be sure there is no mistake in the password you are asked to enter it again. The two entries must match.
Description	Additional information about the user that you may wish to include.
Permissions	<p>By default, all users may access the KN2108 / KN2116 via the Windows Client software.</p> <ol style="list-style-type: none"> 1. Checking <i>Administration</i> gives a User administration privileges, which allows him to set up and modify the KN2108 / KN2116's Administration page settings. 2. Checking <i>Java client</i> allows a User to access the KN2108 / KN2116 via the Java Client software.
Port Access	<p>This function allows the Administrator or a User with <i>Administration</i> permission to define the selected User's access to the computers on a Port-by-Port basis.</p> <p>For each User profile, select a port and click it to cycle through the choices:</p> <p>Full: (Full access) View: (View Only) Null: (No access rights — the Port will not show up on the User's list on the Main Screen).</p> <p>Repeat until access rights have been set for all the ports.</p> <p>The default is Full for all users on all Ports.</p>

Network

The Network dialog is used to specify the KN2108 / KN2116's network environment. The box is divided into three panels: Access Port; IP Address; and Log Server.



Access Port

As a security measure, if a firewall is being used, the Administrator can specify the port numbers that the firewall will allow, and set the firewall accordingly. Users must specify the port number when they log in to the KN2108 / KN2116. If an invalid port number (or no port number) is specified, the KN2108 / KN2116 will not be found.

Note: If there is no firewall (on an Intranet, for example), it doesn't matter what these numbers are set to, since they have no effect.

An explanation of the fields is given in the table below:

Field	Explanation
Program:	This is the port number that must be specified when connecting from the Windows Client software program. Valid entries are from 1024 - 60,000. The default is 9000.
Java:	This is the port number used for Java Client connections. Valid entries are from 0 - 65535. The default is 9002.

IP Address

The KN2108 / KN2116 can either have its IP address assigned dynamically (DHCP), or it can be given a fixed IP address.

- ♦ For dynamic IP address assignment, select the *Obtain an IP address automatically*, radio button.
- ♦ To specify a fixed IP address, select the *Set IP address manually*, radio button and fill in the IP address.

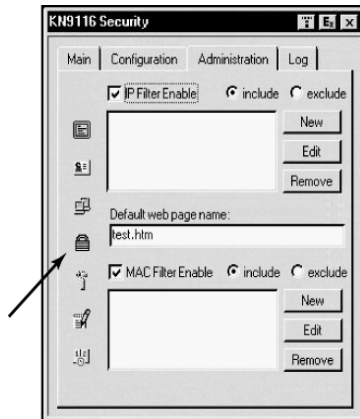
Log Server

Important transactions that occur on the KN2108 / KN2116, such as logins and internal status messages, are kept in an automatically generated log file. You specify the MAC address and a Port number for the computer that the Log Server resides on in this panel.

Installation and operation of the Log Server is discussed in Chapter 8. The Log File is discussed on page 67.

Security

The Security page controls access to the KN2108 / KN2116.



- ♦ The *Default web page name* lets the Administrator specify an addition to the IP address that the user must include when he accesses the KN2108 / KN2116 with a browser. For example:

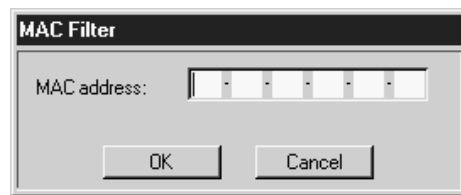
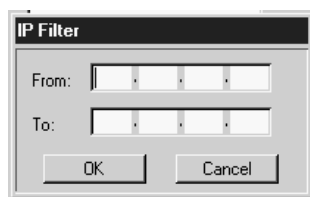
192.168.0.126/test.htm

- ♦ The user must include the forward slash and the string that represents the page name in the IP address. For security purposes, we recommend that you change the name of this page from time to time.

Note: 1. If no page name is specified here, anyone will be able to access the KN2116 with the Windows client using the IP address alone. This is a very insecure situation.

2. If no page name is specified here, the KN2108 / KN2116 cannot be accessed with the Java Client.

- ◆ *IP* and *MAC Filters* control access to the KN2108 / KN2116 based on the IP and/or MAC addresses of the computers attempting to connect. A maximum of 100 IP filters and 100 MAC filters are allowed. To enable IP and/or MAC filtering, **Click** to put a check mark in the *IP Filter Enable* and/or *MAC Filter Enable* checkbox.
 - ◆ If the include button is checked, all the addresses within the filter range are allowed access; all other addresses are denied access.
 - ◆ If the exclude button is checked, all the addresses within the filter range are denied access; all other addresses are allowed access.
- ◆ To add a filter, Click **New**. A dialog box similar to the one below appears:



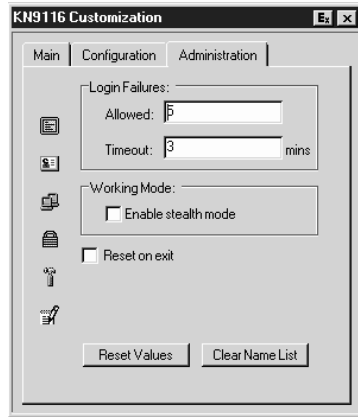
Note: Each IP filter can consist of a single address, or a range of addresses. To filter a single IP address, key in the same address in both the *From* and *To* fields. To filter a continuous range of IP addresses, key in the start of the range in the *From* field; key in the end of the range in the *To* field.

After you specify the filter addresses, Click **OK**.

- ◆ To delete a filter, select it and Click **Remove**.
- ◆ To modify a filter, select it and Click **Edit**. The *Edit* dialog box is similar to the *New* dialog box. When it comes up, simply delete the old address and replace it with the new one.

Customization

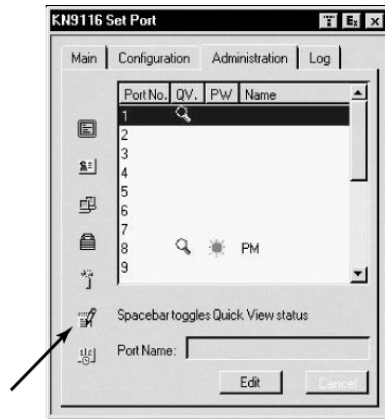
An explanation of the Customization parameters is given in the table below:



Parameter	Explanation
Login Failures	Allowed: sets the number of consecutive failed login attempts that are permitted from a remote computer. Timeout: sets the amount of time a remote computer must wait before attempting to login again after it has exceeded the number of allowed failures.
Working Mode	If <i>Stealth Mode</i> is enabled , the KN2116 cannot be pinged.
Reset on exit	Placing a check here causes the KN2116 to reset itself and implement all the new changes when you log out. Following the reset, wait approximately 30 to 60 seconds before logging back in. For example, if you change the IP address in the Network dialog box, you must open this page and enable <i>Reset on exit</i> before logging out. Otherwise, the change will not take effect.
Reset Values	Clicking this button undoes all changes that have been made to the Configuration and Administration pages (except for the Port Names that were assigned to the Ports - see Set Ports, p. 33) and returns the parameters to the original factory default settings (see <i>Factory Default Settings</i> , p. 81).
Clear Name List	This function is similar to Reset Values. The difference is that it also clears the Port Name settings at the same time that it undoes all changes and returns the setup to the original factory default settings.

Set Port

This dialog box lets the administrator enable/disable Quick View status for selected ports, and to create, modify, or delete names for each of the ports.



Quick View Status

Selecting certain ports as Quick View ports is a way of limiting which ports are included when the KN2116 is in auto scan mode. If the KN2108 / KN2116 is configured to only auto scan ports that have Quick View status (see p. 60), designating a port as a Quick View port in this dialog box means that it will be included when auto scanning is in effect.

The spacebar toggles a port's Quick View status. To select/deselect a port, highlight it and press the spacebar. When a port has been selected as a Quick View port, a *magnifying glass symbol* displays in the QV column to indicate so. When a port isn't selected, there is no magnifying glass symbol.

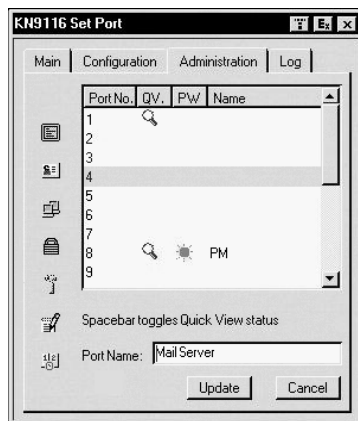
Port Name

To help remember which computer is attached to a particular port, every port can be given a name. This field allows the Administrator to create, modify, or delete port names.

To Edit a port name:

1. Select the port you want to edit.
2. Click **Edit**.

The dialog box changes, and the *Port Name* entry field becomes active:



3. Key in the new Port Name, or modify/delete the old one.

The maximum number of characters allowed for the Port Name is 19.

Legal characters include:

- ♦ All alpha characters: **a - z**; **A - Z**
- ♦ All numeric characters: **0 - 9**
- ♦ **+ - / : .** and **Space**

Case does not matter; the OSD displays the Port Name in all capitals no matter how they were keyed in.

4. When you have finished editing the port name, Click **Update**. To abandon your editing changes, Click **Cancel**.

Date/Time

The Date/Time dialog box lets the Administrator set up the KN2108 / KN2116's time parameters:



- ◆ To establish the time zone that the KN2116 is located in, drop down the *Time Zone* list and choose the city that most closely corresponds to where it is at.
- ◆ To set the year and day, use the Calendar graphic.
 - ◆ Clicking << or >> moves you backward or forward a year.
 - ◆ Clicking < or > moves you backward or forward a month.
 - ◆ After you have set the year and month, click on the day.
- ◆ To set the time, use the 24 hour HH:MM:SS format.
- ◆ The *Synchronize* button, is only effective from the Local Console. Clicking it synchronizes the KN2108 / KN2116's time to the time of the Local Console's computer.

Upgrading the Firmware

As new versions of the KN2108 / KN2116 firmware become available, they can be downloaded from our website at:

<http://www.altusen.com>

Check the web site regularly to find the latest information and packages.

Note: Although upgrading the firmware isn't on the OSD Administration page, it is an administration function, so we will discuss it in this chapter.

To upgrade the firmware, do the following:

1. Download the new firmware file to a computer that is not part of your KN2108 / KN2116 installation.
2. From that computer, open your browser and log in to the KN2108 / KN2116.
3. Click the **Firmware** icon (see p. 37) to open the Firmware configuration dialog box:



4. Click **Browse**; navigate to the directory that the new firmware file is in and select the file.
5. Click **Upload**.
6. After the upload completes, click the **Logout** icon to exit and reset the KN2108 / KN2116.

Chapter 4.

Browser Operation

Overview

KN2018 / KN2116 computer control and switching operations are governed by an On Screen Display (OSD) interface. The OSD can be accessed remotely with a Windows-based client, or a Java-based client. To connect to the switch and bring up its OSD you must log in from an internet browser.

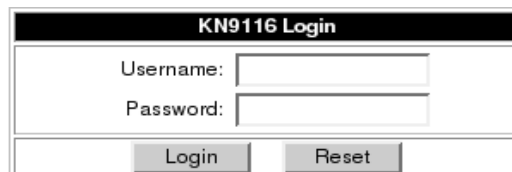
Logging In

To log in from an internet browser:

1. Open the browser and specify the IP address of the KN2018 / KN2116 you want to access in the browser's URL location bar.

Note: If you don't know the IP address, get it from the administrator.

2. When the *Security Alert* dialog box appears, accept the certificate.
3. A login page appears:



KN9116 Login	
Username:	<input type="text"/>
Password:	<input type="password"/>
<input type="button" value="Login"/>	<input type="button" value="Reset"/>

ALTUSCN
Connect Without Limits™

4. Provide a valid Username and Password (set up by the administrator), then Click **Login** to continue.

- Note:** 1. If you supply an invalid login, the authentication routine will return a message stating, *Invalid Username or Password. Please try again.* If you exceed the number of login failures set by the administrator, a message stating that *The page cannot be displayed,* appears. This is done to confuse and discourage hackers from trying to discover a valid Username and Password. If you see this message, try logging in again being careful with the Username and Password.
2. If you are the Administrator and are logging in for the first time, use the default Username: *administrator*; and the default Password: *password*. For security purposes, we strongly recommend you remove these and give yourself a unique Username and Password (see *User Management*, p. 26).

After you have successfully logged in, the KN2018 / KN2116 Main Web Page appears with the *General* dialog box displayed:



Note: This is the same dialog box that appears whenever you click the *General* icon at the top left of the page.

Web Page Layout

The General Dialog Box

An explanation of the dialog box fields is given in the table below:

Field	Purpose
Device Name:	To make it easier to manage installations that have more than one KN2018 / KN2116, each one can be given a name. The name that was assigned by the administrator to this unit displays here.
MAC Address:	The KN2018 / KN2116's MAC Address displays here.
Firmware Version:	Indicates the KN2018 / KN2116's current firmware version level.
Reset on Exit:	To save any configuration/administration changes that you have made in the OSD, place a check here to have the KN2018 / KN2116 implement the changes you have made and reset itself when you log out. Note: This checkbox is only enabled for users who have administration privileges

Note: New versions of the KN2018 / KN2116's firmware can be downloaded from our website as they become available, (see p. 36 for details).

Web Page Icons

The purpose of the other icons at the top of the web page are explained in the table below:

Icon	Function
Sync	Click this icon to sync your computer time with the KN2116's time.
Firmware	Click this icon to install new versions of the KN2116's firmware. See p. 36 for details. Note: The Firmware icon only displays for users with administrative permission. It doesn't appear on the web pages of users who don't have the proper permission.
Logout	Click this icon to log out and end your KN2116 session.

Web Page Buttons

The purpose of the buttons at the left of the web page are explained in the table below:

Icon	Purpose
Windows Client	Allows users to connect to the KN2018 / KN2116 using Windows software, and to remotely control the connected server (or servers via a KVM switch).
Java Client	For platform independence, the Java client allows users that have Java installed to connect to the KN2018 / KN2116 and to remotely control the connected server (or servers via a KVM switch). See p. 62 for details.
Log Server	Clicking this button allows the administrator to download and install the Log Server application. See Chapter 8 for Log Server details.
PON	If a Power on the NET™ (PON) module is connected to the KN2018 / KN2116, clicking this icon will bring up its interface.
Log	All the events that take place on the KN2018 / KN2116 are recorded in a log file. Clicking this icon displays the contents of the log file.

Chapter 5.

The Windows Client

Activating the OSD

After you have successfully logged in (see p. 37), to activate the Windows Client OSD do the following:

1. Click the *Windows Client* button at the left of the web page.

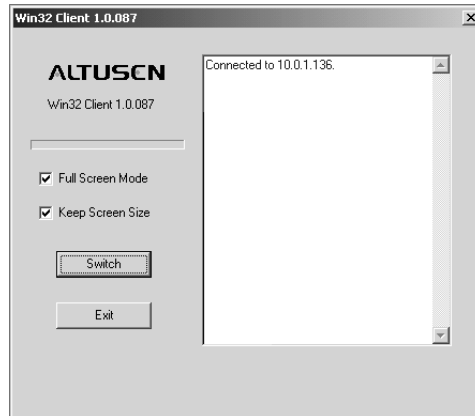
Note: You must have DirectX 7.0 or higher installed on your computer. If not, the Windows Client will not load. If you don't already have it, DirectX is available for free download from Microsoft's web site: <http://www.microsoft.com/downloads>.

2. Accept the security certificates.
3. When the browser dialog asks what to do with the program file, click **Open**.

Note: 1. If the browser cannot run the file, save it to disk, instead. Then, with your browser still open to the KN2018 / KN2116 web page, run the file from your disk.

2. If you use the *save to disk* method, for security purposes, you cannot simply run a previously downloaded version of the program. Each time you want to access the KN2018 / KN2116, you must log in to the web page with a valid username and password to download a fresh copy of the program.

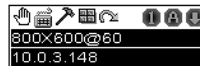
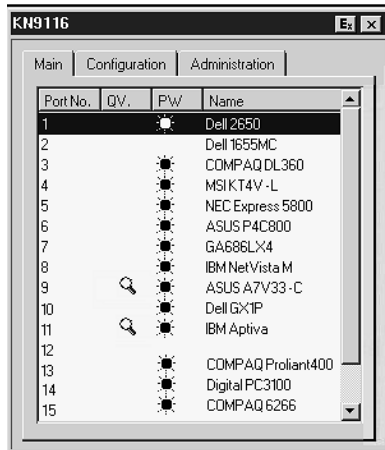
4. When a connection to the KN2018 / KN2116 has been established the following screen appears:



- Note:**
1. If *Full Screen Mode* is enabled (there is a checkmark in the box), the remote display fills the entire screen of your local monitor.
 2. If *Full Screen Mode* is not enabled (there is no checkmark in the box), the remote display appears as a window on your desktop. If the remote screen is larger than what is able to fit in the window, move the mouse pointer to the screen border that is closest to the area you want to view and the screen will scroll.
 3. If *Keep Screen Size* is not enabled (there is no checkmark in the box), the remote screen is resized to fit the resolution of your local monitor.
 4. If *Keep Screen Size* is enabled (there is a checkmark in the box), the remote screen is not resized.
 - ♦ If the remote resolution is smaller, its display appears like a window centered on your screen.
 - ♦ If the remote resolution is larger, its display is centered on your screen. To access the areas that are off screen, move the mouse to the corner of the screen that is closest to the area you want to view and the screen will scroll.
5. Click on **Switch** to bring up the OSD.

The Main Page

The OSD comes up with the *Main* page visible:



- Note:**
1. The *Administration* tab is disabled for users who don't have administration permission. For those who do have administration permission, administration operations are discussed in Chapter 3.
 2. There is a small Windows Client Control Panel at the lower right. The control panel is discussed in detail on p. 49.

There are two buttons at the upper right of the dialog box:

- ◆ Clicking the left button closes the OSD display and logs you out of the KN2018 / KN2116 session.
- ◆ Clicking the right button closes the OSD display but does not log you out of the session. You can bring the display back with the OSD hotkeys (see OSD Hotkey, p. 60).

The Main Page lists all of the KN2018 / KN2116's ports. You access the computers connected to the its ports by selecting them on this page. The meanings of the page headings are given in the table below:

Heading	Explanation
Port No.	<p>This column lists the Port Numbers for all the CPU ports on the installation. To access a particular computer use the Up and Down Arrow keys to move the highlight bar to it, then press Enter, or Double Click it.</p> <p>After you select a port, the remote system's video output is captured and displayed on your monitor, and your local keystroke and mouse input is captured and sent to the remote system.</p> <p>Note: If you select a port that you do not have access rights to (see Port Access, p. 27), you will switch to that port, but the screen will be blank.</p> <p>Port operation is discussed in detail on p. 45.</p>
QV	If a port has been selected for Quick View scanning (see p. 33), a <i>magnifying glass symbol</i> displays in this column to indicate so.
PW	The computers that are powered on and are On Line have a <i>sun symbol</i> in this column to indicate so.
Name	If a port has been given a name (see <i>Edit</i> p. 33), its name appears in this column.

Note: If you return to the Main Page from one of the other pages (Configuration, for example), and the Arrow keys don't work for moving the highlight bar, press the *Tab* key, to move through the choices.

Port Operation

Select a port on the OSD Main Screen either by moving the highlight bar to it with the Up and Down Arrow keys and pressing **Enter**, or by **Double Clicking** it. Once you select a port, its screen displays on your monitor, and your keyboard and mouse input affects the remote system.

The OSD Toolbar

The OSD provides a toolbar to help you control the KN2018 / KN2116 from within the captured port. To bring up the toolbar, tap the OSD Hotkey (Scroll Lock or Ctrl), twice. The toolbar appears at the upper left corner of the screen:



Depending on the settings that were selected for *Port Display Mode* (see p. 60), the Port Number and/or the Port Name display at the right of the toolbar.









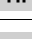
Note: When the toolbar displays, mouse input is confined to the toolbar area and keyboard input has no effect. To carry out operations on the computer connected to the port, you must recall the OSD and select the port again.

Recalling the OSD

To dismiss the toolbar and bring back the OSD display (the Main, Configuration, and Administration pages), tap the OSD Hotkey once. The OSD Toolbar disappears, and the main OSD display reappears.

The Toolbar Icons

The meanings of the toolbar icons are explained in the table below.

	Drag this icon to move the toolbar to a different location.
	Click to skip to the first accessible port on the entire installation without having to invoke the OSD.
	Click to skip to the first accessible port previous to the current one without having to invoke the OSD.
	Click to begin Auto Scan Mode. The KN2018 / KN2116 automatically switches among the ports that were selected for Auto Scanning under the Configuration <i>Scan Select</i> function (see p. 60). This allows you to monitor their activity without having to switch among them manually.
	Click to skip from the current port to the next accessible one without having to invoke the OSD.
	Click to skip from the current port to the last accessible port on the entire installation without having to invoke the OSD.
	Click to bring up the OSD.
	Click to close the toolbar.
	Click to logout and exit the Windows Client application.

Note: The administrator selects which ports are accessible to each user with the *User Management* function, (see p. 26 for details).

Hotkey Operation

Hotkeys allow you to provide KVM focus to a port directly from the keyboard. The KN2018 / KN2116 provides the following hotkey features:

- ◆ Auto Scanning
- ◆ Skip Mode Switching

The hotkeys are: A and P for Auto Scanning; and the Arrow Keys for Skip Mode.

Note: In order for hotkey operations to take place, the toolbar must be visible (see *Port Operation*, p 45). To use the hotkey keys for normal purposes, close the toolbar.

Auto Scanning:

The Auto Scan function automatically switches among all the ports that are accessible to the currently logged on User at regular intervals, so that he can monitor their activity automatically. (See *Scan Select*, p. 60 for information regarding accessible ports).

Setting the Scan Interval:

The amount of time Auto Scan dwells on each port is set with the *Scan Duration* setting (see p. 60).

Invoking Auto Scan:

To start Auto Scanning, tap the **A** key. The Auto Scan function cycles through the ports in order - starting from the first port on the installation. An **S** appears in front of the Port ID Display to indicate that the port is being accessed under Auto Scan Mode.

Pausing Auto Scan:

While you are in Auto Scan Mode, you can pause the scanning in order to keep the focus on a particular computer by pressing **P**. During the time that Auto Scanning is paused, the **S** in front of the Port ID blinks On and Off.

Pausing when you want to keep the focus on a particular computer is more convenient than *Exiting Auto Scan Mode* because when you Resume scanning, you start from where you left off. If, on the other hand, you were to exit and restart Auto Scan Mode, the scanning would start from the very first computer on the installation. To resume Auto Scanning, press any key except **Esc** or the **Spacebar**. Scanning continues from where it left off.

Exiting Auto Scan:

While Auto Scan Mode is in effect, ordinary keyboard functions are suspended. You must exit Auto Scan Mode in order to regain normal control of the keyboard. To exit Auto Scan Mode press **Esc** or the **Spacebar**. Auto Scanning stops when you exit Auto Scan Mode.







Skip Mode:

Skip Mode allows you to switch ports in order to monitor the computers manually. You can dwell on a particular port for as long or as little as you like - as opposed to Auto Scanning, which automatically switches after a fixed interval. The Skip Mode hotkeys are the four Arrow keys. Their operation is explained in the table below:

←	Skips from the current port to the first accessible port previous to it. (See <i>Scan Select</i> , p. 60, for information regarding accessible ports.)
→	Skips from the current port to the first accessible port that comes after it.
↑	Skips from the current port to the very first accessible port on the installation.
↓	Skips from the current port to the very last accessible port on the installation.

Windows Client Control Panel

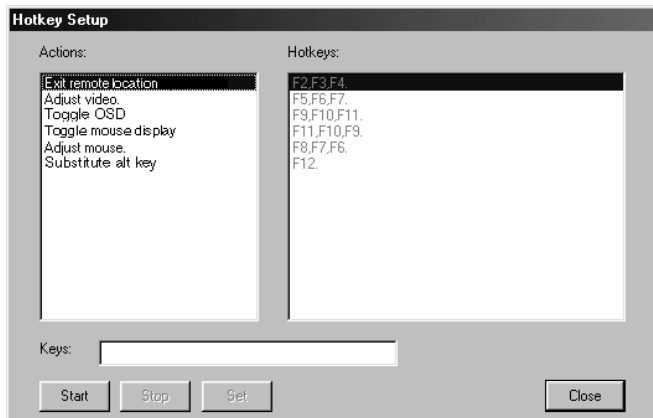
The control panel consists of an icon bar at the top, with two text bars below it. Initially, the text bars display the video resolution and IP address of the device at the remote location. As the mouse pointer moves over the icons in the icon bar, however, the text bar information changes to describe the icon's function. The functions that the icons perform are described in the table below.

Icon	Function
	Drag the OSD display to another position on the screen by clicking and holding on the hand while you move the mouse.
	Click to bring up the Hotkey Setup dialog box (see p. 50 for details).
	Click to bring up the Video Adjustment dialog box. Right click to do a fast Auto Sync (see p. 52 for details).
	Click to enable Panel Array Mode (see p. 55 for details).
	Click to exit the Windows Client control of the remote unit.
(Space)	Hover over the space to see the video resolution and IP address of the device at the remote location.
	<p>These LEDs show the Num Lock, Caps Lock, and Scroll Lock status of the remote computer. Click on the icon to toggle the status.</p> <p>Note: When you first connect, the LED display may not be accurate. To be sure, click on the LEDs to set them.</p>

The Hotkey Setup, Video Adjustment, and Panel Array functions are discussed in the sections that follow.

Hotkeys

Various configuration actions related to the keyboard, video, and mouse can be performed via hotkey combinations. The Hotkey setup utility is accessed by clicking the *Keyboard* icon on the Control Panel. The actions performed by the Hotkeys are listed in the left column; the currently defined keys that invoke the actions are shown in the column to the right.



An explanation of the actions is given in the table, below:

Action	Explanation
Exit remote location	Breaks the connection to the KN2116 and returns you to local operation.
Adjust Video	Brings up the video adjustment utility.
Toggle OSD	Toggles the OSD display Off and On.
Toggle mouse display	If you find the display of the two mouse pointers (local and remote) to be confusing or annoying, you can use this function to shrink the non-functioning pointer down to a barely-noticeable tiny circle - which can be ignored. Since this function is a toggle - use the hotkeys again to bring the mouse display back to its original configuration.
Adjust mouse	This utility synchronizes the local and remote mouse movements following a video resolution change. After invoking this utility, simply click the local mouse pointer on top of the remote mouse pointer.
Substitute Alt key	Although all other keyboard input is captured and sent to the KN2116, [Alt + Tab] and [Ctrl + Alt + Del] work on your local computer. In order to implement their effects on the remote system, a function key is substituted for the Alt key. If you substitute the F12 key, for example, you would use [F12 + Tab] and [Ctrl + F12 + Del].

Note: To invoke an action, you must press and release the keys one key at a time.

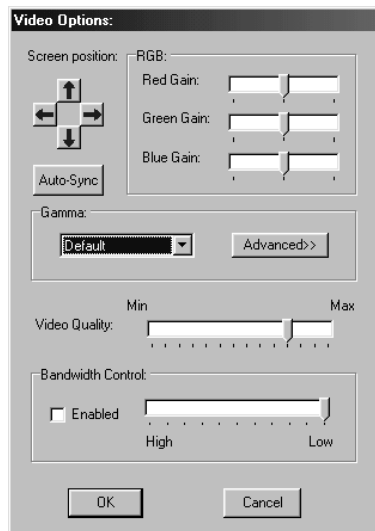
If you find the default Hotkey combinations inconvenient, you can configure them to whatever suits your taste, as follows:

1. Highlight the Action, then Click **Start**
2. Key in the Function keys (one at a time). The key names appear in the *Key* field as you press them.
3. When you have finished keying in your sequence, Click **Stop**
4. Click **Set**
5. Repeat for any other actions you wish to set up

Note: You can use the same function keys for more than one action, *as long as the first key is not the same*. For example, you can use **F1 F2 F3** for one action; **F2 F1 F3** for another; **F3 F2 F1** for a third, etc.

Video Adjustment

You can adjust the placement and the picture quality of the remote screen (as displayed on your local monitor) with the Video Options function. To do so, either click on the Hammer icon on the Control Panel, or use the *Adjust Video* hotkeys (see p. 51). The following screen appears:



The meanings of the adjustment options are given in the table below:

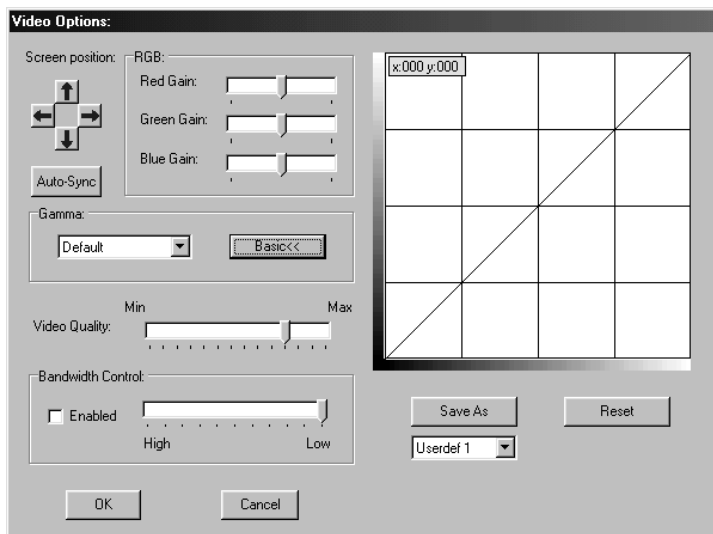
Option	Usage
Screen Position	Adjust the horizontal and vertical position of the remote computer window by Clicking the Arrow buttons.
Auto-Sync	<p>Click Auto-Sync to have the function detect the vertical and horizontal offset values of the remote screen and automatically synchronize it with the local screen.</p> <p>If the local and remote mouse pointers are out of sync, in most cases, performing this function will bring them back into sync.</p> <p>Note: This function works best with a bright screen.</p> <p>If you are not satisfied with the results, use the Screen Position arrows to position the remote display manually.</p>
RGB	Drag the slider bars to adjust the RGB (Red, Green, Blue) values. When an RGB value is increased, the RGB component of the image is correspondingly increased.
Gamma	This section allows you to adjust the video display's gamma level. This function is discussed in detail in the next section, <i>Gamma Adjustment</i> .
Video Quality	Drag the slider bar to adjust the overall Video Quality. Values can be from 20 to 100. The larger the value, the clearer the picture and the more video data goes through the network. Depending on the network bandwidth, a high value may adversely effect response time.
Bandwidth Control	This setting adjusts the ratio between picture quality and network speed. For slow data connections, drag the slider bar to a lower setting to decrease the amount of video data transferred. This ensures screen refresh at workable speeds.

Gamma Adjustment:

If it is necessary to correct the gamma level for the remote video display, use the *Gamma* function of the Video Adjustment dialog box.

Under *Basic* configuration, there are 7 preset levels to choose from. Drop down the list box and choose the most suitable one.

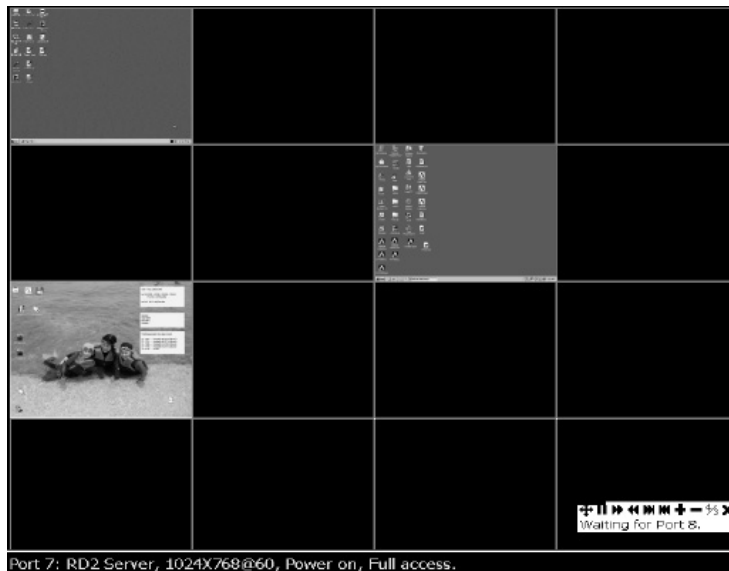
For greater control, clicking the *Advanced* button brings up the following dialog box:



- ◆ Click and drag the diagonal line at as many points as you wish to achieve the display output you desire.
- ◆ Click **Save As** to save up to four configurations derived from this method. Saved configurations can be recalled from the list box at a future time.
- ◆ Click **Reset** to abandon any changes and return the gamma line to its original diagonal position.
- ◆ Click **OK** to save your changes and close the dialog box.
- ◆ Click **Cancel** to abandon your changes and close the dialog box.

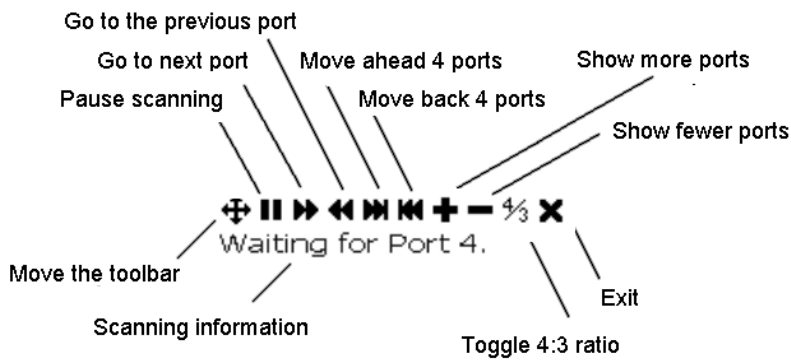
Panel Array Mode

Clicking on the Control Panel's *Panel* icon invokes Panel Array Mode. Under this mode, the OSD divides your screen into a 2 x 4 grid of 8 panels (KN2018), or a 4 x 4 grid of 16 panels (KN2116):



- ◆ Each panel represents one of the KN2018 / KN2116's ports. Starting with Port 1 at the upper left; going from left to right; top to bottom; Port 8 (KN2018), or Port 16 (KN2116), is at the lower right.
- ◆ When the Array is first invoked, it scans through each of the ports that were selected for Auto Scanning under the Configuration page's *Scan Select* function (see p. 60), and displays information about the port (port name, resolution, on line status, port access status), at the bottom of the panel.
- ◆ The number of panels in the array (16, 9, 4, or 1) can be selected by clicking **Show More Ports**, and **Show Fewer Ports** on the panel array toolbar.
- ◆ If the computer connected to a port is on line, its screen displays in its panel, otherwise the panel is blank.

- ◆ Only ports that are accessible to the currently logged in user display (see *Port Access*, p. 27), otherwise the panel is blank.
- ◆ If you move the mouse pointer over a panel, information about the port displays at the bottom of the panel.
- ◆ You can access a computer connected to a port by moving the mouse pointer over its panel and clicking. You switch to the computer exactly as if you had selected it from the OSD Main screen.
- ◆ The panel array toolbar, at the lower right of the screen, provides shortcut navigation and control of the panel array as described in the diagram below:



Keyboard and Mouse Considerations

Keystrokes:

Except for [Alt + Tab] and [Ctrl + Alt + Del], which are retained on the local system to switch among applications and to recover from disaster, keyboard input has no effect on the local computer. All keystrokes are captured and operate on the remote system

In order to provide the [Alt + Tab] and [Ctrl + Alt + Del] functions to the remote system, one of the Function Keys is used as a *Substitute* key for the [Alt] key.

For example, the **F12** key could substitute for the **Alt** key, in which case [F12 + Tab] substitutes for [Alt + Tab]; and [Ctrl + F12 + Del] substitutes for [Ctrl + Alt + Del]. See *Configuring the Hotkeys* on p. 51 for details on setting up a substitute key.

- Note:**
1. While any Function Key can be used for the Substitute key, you **must not** use one that is being used for another action.
 2. When the KN2018 / KN2116 is being accessed with Win 98 under Full Screen Mode, if you mistakenly press Ctrl + Alt + Del, you will have to exit the Windows Client (by clicking the arrow on the Windows Client control panel), and restart the Windows Client from the KN2018 / KN2116 Main Web Page.

Mouse Synchronization:

Until you close the KN2018 / KN2116 connection, mouse movements have no effect on your local system, but are captured and sent to the remote system, instead.

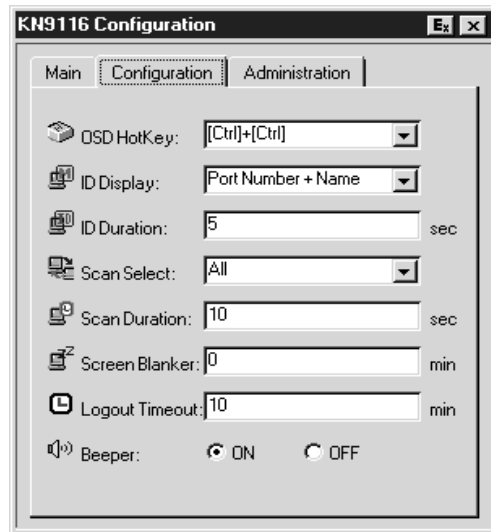
From time to time, especially if you change video resolution, the local mouse movement may no longer be synchronized with the remote system's mouse pointer. There are three methods that can be used to bring the two pointers back into sync:

- ◆ Moving the mouse pointer into the Control Panel and then moving it back out again
- ◆ Performing an *Auto Sync* with the Video Adjustment function (see *Video Adjustment*, p. 52 for details).
- ◆ Invoking the Adjust Mouse function (see *Adjust Mouse*, p. 51 for details)

If none of the above procedures resolve the problem, see *Additional Mouse Synchronization Procedures*, p. 78 in the Troubleshooting section of this manual.

The Configuration Page

The OSD *Configuration* page allows users to set up their own, individual, working environments. The KN2018 / KN2116 stores a separate configuration record for each user profile, and sets up the working configuration according to the *Username* that was keyed into the Login dialog box.



The Configuration page settings are explained in the following table:

Setting	Function
OSD Hotkey	Selects which Hotkey controls the OSD function: [Scroll Lock] [Scroll Lock] or [Ctrl] [Ctrl] . Since the Ctrl key combination may conflict with programs running on the computers, the default is the Scroll Lock combination.
ID Display	Selects how the Port ID is displayed: the Port Number alone (PORT NUMBER); the Port Name alone (PORT NAME); or the Port Number plus the Port Name (PORT NUMBER + PORT NAME). The default is PORT NUMBER + PORT NAME).
ID Duration	Determines how long a Port ID displays on the monitor after a port change has taken place. You can choose an amount from 1 - 255 seconds. The default is 3 Seconds.
Scan Select	Selects which computers will be accessed under Auto Scan Mode (see pp. 46 and 47). Choices are: ALL - All the Ports which have been set Accessible (see p. 27); POWERED ON - Only those Ports which have been set Accessible and are Powered On; QUICK VIEW - Only those Ports which have been set Accessible and have been selected as Quick View Ports (see p. 33); QUICK VIEW + POWERED ON - Only those Ports which have been set Accessible and have been selected as Quick View Ports and are Powered On. The default is ALL.
Scan Duration	Determines how long the focus dwells on each port as it cycles through the selected ports in Auto Scan Mode (see pp. 46 and 47). Key in a value from 1 - 255 seconds. The default is 5 seconds; a setting of 0 disables the Scan function.
Screen Blanker	If there is no input from the console for the amount of time set with this function, the screen is blanked. Key in a value from 1 - 30 minutes. A setting of 0 disables this function. The default is 0 (disabled).
Logout Timeout	If there is no Operator input for the amount of time set with this function, the Operator is automatically logged out. A login is necessary before the KN2116 can be accessed again.
Beeper	When set to <i>ON</i> , the beeper sounds whenever a Port is changed; when activating the Auto Scan function (see pp. 46 and 47); or an invalid entry is made on an OSD menu. The default is <i>ON</i> .

Chapter 6.

The Java Client

Activating the OSD

After you have successfully logged in (see p. 37), to activate the Java Client OSD do the following:

1. Click the *Java Client* button at the left of the web page.

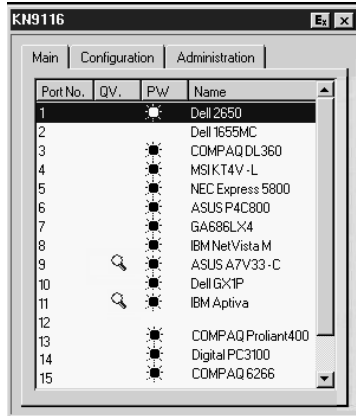
Note: You must have Sun's Java 2 JRE 1.4 or higher installed on your computer. Java is available for free download from the Sun Java website: <http://java.sun.com>

2. Accept the security certificates.
3. When the browser dialog asks what to do with the program file, click **Open**.

Note: 1. If the browser cannot run the file, save it to disk, instead. Then, with your browser still open to the KN2018 / KN2116 web page, run the file from your disk.

2. If you use the *save to disk* method, for security purposes, you cannot simply run a previously downloaded version of the program. Each time you want to access the KN2018 / KN2116, you must log in to the web page with a valid username and password to download a fresh copy of the program.

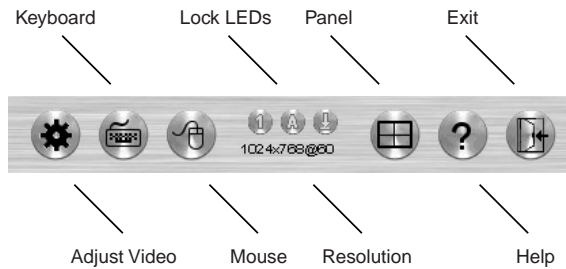
When you bring up the OSD, the Main Screen comes up in the center of your monitor.



This is the same OSD Main Screen that appears when the Windows Client is invoked. For an explanation of this screen refer to the discussion in the *Windows Client Main Page* section, p. 43.

The Java Client Control Panel

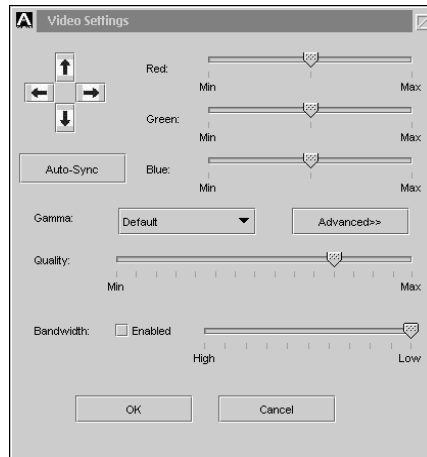
Instead of a control panel like the one that the Windows Client uses, the Java Client has a hidden control panel, located at the bottom center of the screen. The Java Control Panel becomes visible when the mouse pointer is moved over it.



The functions of the Control Panel icons are described in the sections that follow.

Video Adjustment

Clicking this button brings up the *Video Adjustment* dialog box:



This is similar to the Windows Client Video Adjustment dialog box. See p. 52 for details.

Keyboard

Some keyboard combinations cannot be captured and sent to the KN2018 / KN2116. In order to implement their effects on the remote system, this function provides a one-click implementation of some common window control combinations.



Mouse

At times the local mouse movement may lose sync with the remote mouse movement. The Mouse Synchronization function gets them back into sync. There are two methods available to bring the pointers into sync:

1. Click the Mouse Synchronization button; wait for the remote mouse pointer to move to the upper left corner of the screen; move your local mouse pointer directly on top of the remote pointer, and Click.
2. Move your local mouse pointer over the Java Client Control Panel, and Click.

Lock Key LEDs

These LEDs show the Num Lock, Caps Lock, and Scroll Lock status of the remote computer. They turn Green when the Lock status is **On**. Click on the icon to toggle the status.

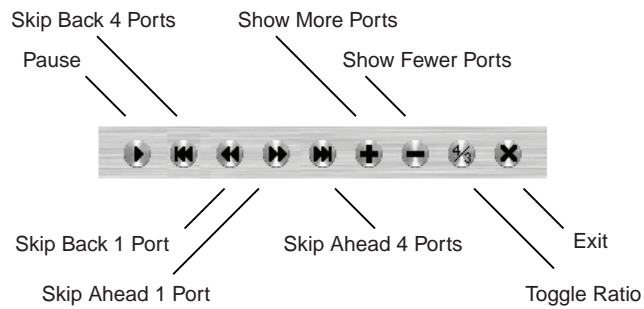
Note: When you first connect, the LED display may not be accurate. To be sure, click on the LEDs to set them.

Resolution

The video resolution of the device at the remote location displays directly below the Lock LEDs.

Panel

Click to enable Panel Array Mode. This is very similar to the Windows Client Panel Array Mode (see p. 55 for details), except for some differences in the toolbar. The Java Client Panel Array Mode Toolbar is shown in the figure below:



Note: When you click *Pause*, the Array stops scanning the ports. The button changes to an arrowhead and its caption changes to *Resume*. To resume scanning, click the Resume button.

Question Mark:

Clicking this button brings up the online help screen.

Exit:

Clicking *Exit* terminates Panel Array Mode.

Port Operation

Java Client port operation is the same as for the Windows Client. See page 45 for port operation details.

Hotkey Operation

Hotkey operation is the same as for the Windows Client. See page 59 for configuration details.

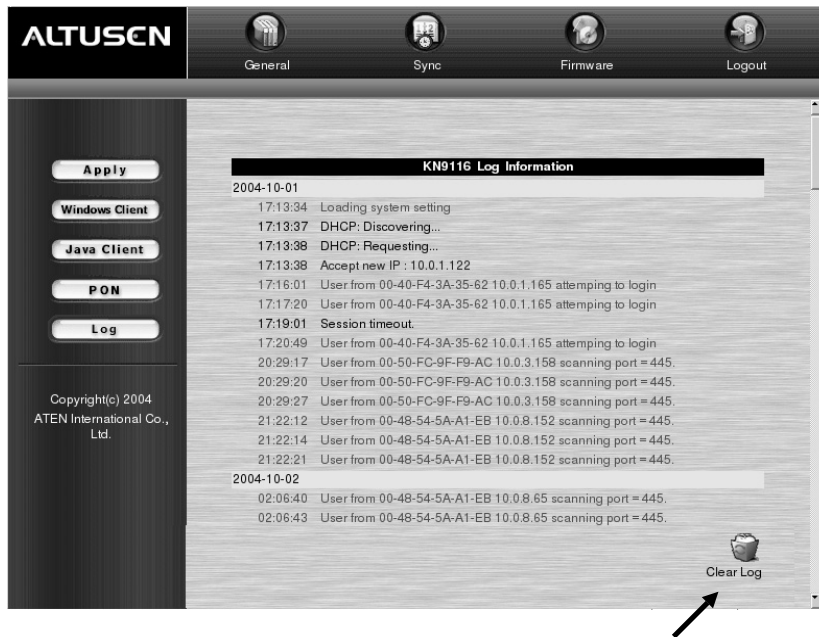
The Configuration Page

The Java Client Configuration Page is the same as for the Windows Client. See page 59 for configuration details.

Chapter 7. The Log File

The Main Screen

The KN2018 / KN2116 logs all the events that take place on it. Following a reset, it writes them to a log file, which is a searchable database. To view the contents of the log file, click the *Log* icon at the left of the web page. A screen similar to the one below appears:



To clear the log file, click on the *Clear Log* icon at the lower right of the file.

Notes:

Chapter 8.

The Log Server

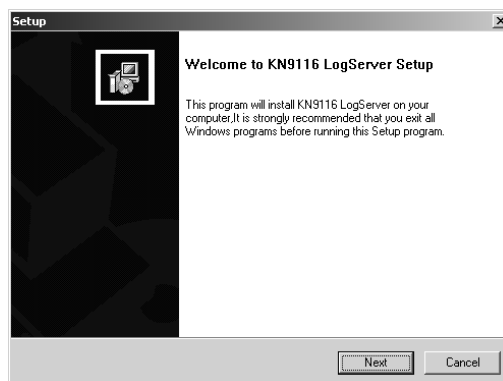
The Windows-based Log Server is an administrative utility that records all the events that take place on selected KN2018 / KN2116 units and writes them to a searchable database. This chapter describes how to install and configure the Log Server.

Installation

1. From the computer that you want to use as the Log Server, open your browser and log into the KN2018 / KN2116 (see p. 37).
2. Click the *Log Server* button at the left of the web page to start the Log Server installation program.
3. When the browser dialog asks what to do with the program file, click **Open**.

Note: If the browser cannot run the file, save it to disk, instead, and run the file from your disk.

The Log Server installation screen appears:



4. Click **Next**, and follow the on-screen instructions to complete the installation and have the Log Server program icon placed on your desktop.

Starting Up

To bring up the Log Server, either double click the program icon, or key in the full path to the program on the command line. The first time your run it, a screen similar to the one below appears:



Note: The MAC address of the Log Server computer must be specified on the *Network* page of the *Administrator Utility* (see p. 28) .

The screen is divided into three components:

- ◆ A *Menu Bar* at the top
- ◆ A panel that will contain a list of *KN2116* units in the middle (see p. 75 for details).
- ◆ A panel that will contain an *Events List* at the bottom

Each of the components is explained in the sections that follow.

The Menu Bar

The Menu bar consists of four items:

- ◆ Configure
- ◆ Events
- ◆ Options
- ◆ Help.

These are discussed in the sections that follow.

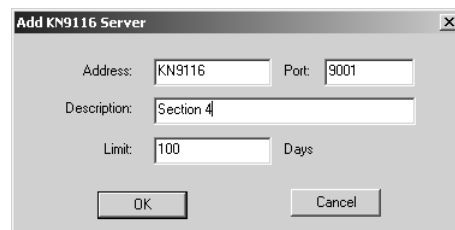
Note: If the Menu Bar appears to be disabled, click in the KN2018 / KN2116 List window to enable it.

Configure

The Configure menu contains three items: Add; Edit; and Delete. They are used to add new KN2018 / KN2116 units to the KN2018 / KN2116 List; edit the information for units already on the list; or delete KN2018 / KN2116 units from the list.

- ◆ To add a KN2018 / KN2116 to the list, click **Add**.
- ◆ To edit or delete a listed KN2018 / KN2116, first select the one you want in the List window, then open this menu and click **Edit** or **Delete**.

When you choose *Add* or *Edit*, a dialog box, similar to the one below, appears:



The screenshot shows a dialog box titled "Add KN9116 Server". It has a standard Windows-style title bar with a close button (X). The dialog contains the following fields and controls:

- Address:** A text box containing "KN9116".
- Port:** A text box containing "9001".
- Description:** A text box containing "Section 4".
- Limit:** A text box containing "100", followed by the text "Days".
- Buttons:** "OK" and "Cancel" buttons at the bottom.

A description of the fields is given in the table, below:

Field	Explanation
Address	This can either be the IP address of the KN2018 / KN2116 or its DNS name (if the network administrator has assigned it a DNS name).
Port	The Port number assigned to the KN2018 / KN2116 (see p. 28).
Description	This field is provided so that you can put in a descriptive reference for the unit to help identify it.
Limit	This specifies the number of days that an event should be kept in the Log Server's database. Events that exceed the amount of time specified here can be removed with the <i>Maintenance</i> function (see p. 74 for details).

Fill in or modify the fields, then click **OK** to finish.

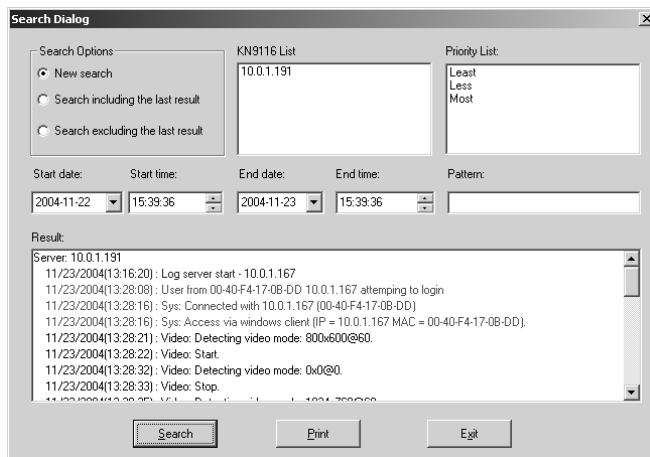
Events

The Events Menu has two items: *Search* and *Maintenance*.

Search:

Search allows you to search for events containing specific words or strings.

When you access this function, a screen, similar to the one below, appears:



A description of the items is given in the table, below:

Item	Explanation
New search	This is one of three radio buttons that define the scope of the search. If it is selected, the search is performed on all the events in the database for the selected KN2018 / KN2116.
Search last results	This is a secondary search performed on the events that resulted from the last search.
Search excluding last results	This is a secondary search performed on all the events in the database for the selected KN2018 / KN2116 <i>excluding</i> the events that resulted from the last search.
KN2018 / KN2116 List:	KN2018 / KN2116 units are listed according to their IP address. Select the unit that you want to perform the search on from this list. You can select more than one unit for the search. If no units are selected, the search is performed on all of them.
Priority	Sets the level for how detailed the search results display should be. 1 is the most general; 3 is the most specific.
Start Date	Select the date that you want the search to start from. The format follows the MM/DD/YYYY convention, as follows: 05/11/2002
Start Time	Select the time that you want the search to start from. The format follows the HH:MM:SS convention, as follows: 13:45:08
End Date	Select the date that you want the search to end at.
End Time	Select the time that you want the search to end at.
Pattern	Key in the pattern that you are searching for here. The multiple character wildcard (%) is supported. E.g., h%ds would match <i>hands</i> and <i>hoods</i> .
Results	Lists the events that contained matches for the search.
Search	Click this button to start the search.
Print	Click this button to print the search results.
Exit	Click this button to exit the Log Server.

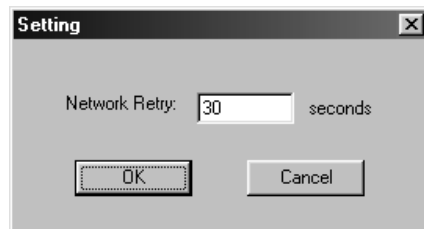
Maintenance:

Records are not automatically erased when their time limit (set with the *Limit* setting of the Edit function - see p. 72), comes due. They still remain in the database even though they have exceeded their expiration time.

Clicking this menu item removes those records from the database.

Options

Network Retry allows you to set the number of seconds that the Log Server should wait before attempting to connect if its previous attempt to connect failed. When you click this item, a dialog box, similar to the one below, appears:



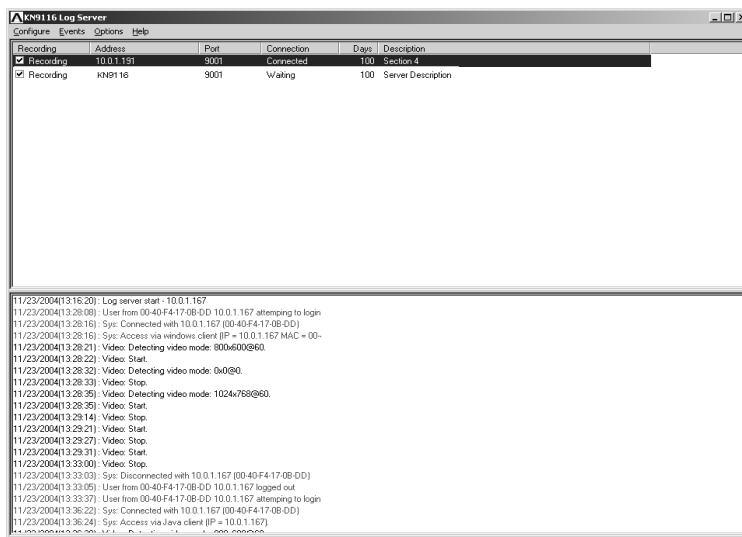
Key in the number of seconds, then click **OK** to finish.

The KN2018 / KN2116 Main Screen

Overview

The KN2018 / KN2116 Main Screen is divided into two main panels.

- ◆ The upper (List) panel lists all of the KN2018 / KN2116 units that have been selected for the Log Server to track (see *Configure*, p. 71).
- ◆ The lower (Tick) panel displays the tick information for the currently selected KN2018 / KN2116 (the highlighted one - if there are more than one). To select a KN2018 / KN2116 unit in the list, simply click on it.



The List Panel

The List panel contains six fields:

Field	Expalation
Recording	Determines whether the Log Server records the ticks for this KN2018 / KN2116, or not. If the Recording checkbox is checked, the field displays <i>Recording</i> , and the ticks are recorded. If the Recording checkbox is not checked, the field displays <i>Paused</i> , and the ticks are not recorded. Note: Even though a KN2018 / KN2116 is not the currently selected one, if its Recording checkbox is checked, the Log Server will still record its ticks.
Address	This is the IP Address or DNS name that was given to the KN2018 / KN2116 when it was added to the Log Server (see Configure, p. 71).
Port	This is the Port number assigned to the KN2018 / KN2116 (see Configure, p. 71).
Connection	If the Log Server is connected to the KN2018 / KN2116, this field displays <i>Connected</i> . If it is not connected, this field displays <i>Waiting</i> . This means that the Log Server's MAC address has not been set properly. It needs to be set on the <i>Network</i> page of the <i>Administrator Utility</i> (see p. 28).
Days	This field displays the number of days that the KN2018 / KN2116's events are to be kept in the Log Server's database before expiration (see Configure, p. 71).
Description	This field displays the descriptive information given for the KN2018 / KN2116 when it was added to the Log Server (see Configure, p. 71).

The Tick Panel

The lower panel displays tick information for the currently selected KN2116. Note that if there are more than one KN2018 / KN2116s, even though they aren't currently selected, if their *Recording* checkbox is checked, the Log Server records their tick information and keeps it in its database.

Appendix

Troubleshooting

General Operation

Symptom	Possible Cause	Action
Mouse and/or Keyboard not responding.	Improper mouse and/or keyboard reset.	Unplug the cable(s) from the console port(s), then plug it/them back in.
Sudden loss of network connection.	Local reset of the KN2018 / KN2116.	Close your KN2018 / KN2116 connection. Wait approximately 30 seconds, and log in again.

The Java Client

For mouse synchronization problems, refer to the discussion on page 64. For connection and operation problems, see the table below:

Problem	Resolution
Java Client won't connect to the KN2018 / KN2116.	<ol style="list-style-type: none">1. Java 2 JRE 1.4 or higher must be installed on your computer.2. Make sure to include the correct name of the web page when you specify the KN2018 / KN2116's IP address.3. Close the Java Client, reopen it, and try again.
Pressing the Windows Menu key has no effect.	Java doesn't support the Windows Menu key.
Java Client performance deteriorates.	Exit the program and start again.

The Windows Client

Problem	Resolution
Windows Client won't connect to the KN2018 / KN2116.	DirectX 7.0 or higher must be installed on your computer.
Remote mouse pointer is out of sync.	<ol style="list-style-type: none"> 1. Use the <i>AutoSync</i> feature (see <i>Video Adjustment</i>, p. 52), to sync the local and remote monitors. 2. Use the <i>Adjust Mouse</i> feature (see <i>Mouse Movement</i>, p. 58) to bring them back in sync. 3. See additional procedures, below.
Part of remote window is off my monitor.	Use the <i>AutoSync</i> feature (see <i>Video Adjustment</i> , p. 52), to sync the local and remote monitors.

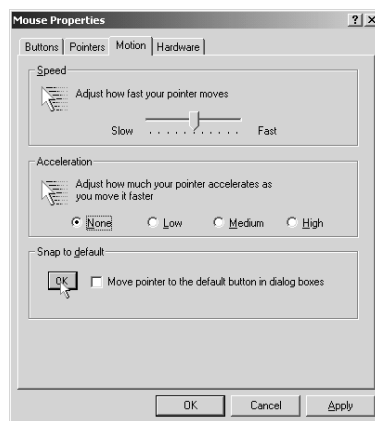
Additional Mouse Synchronization Procedures:

If the mouse synchronization procedures mentioned in the manual fail to resolve mouse pointer problems for particular computers, try the following:

Note: These procedures are to be performed on the computers attached to the KN2018 / KN2116's ports - not on the computer you are using to access the KN2018 / KN2116 with.

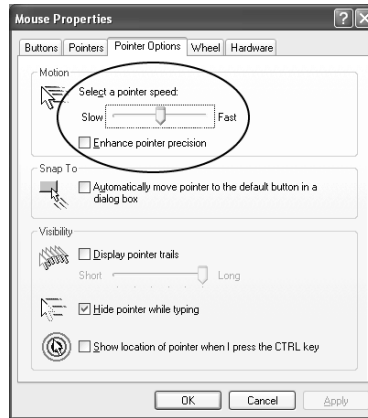
1. Windows 2000:

Set the mouse speed to the middle position; set the mouse acceleration to *None* (Control Panel → Mouse → Mouse Properties → Motion):



2. Windows XP / Windows Server 2003:

Set the mouse speed to the middle position; disable *Enhance Pointer Precision* (Control Panel → Printers and Other Hardware → Mouse → Pointer Options):



3. Windows ME:

Set the mouse speed to the middle position; disable mouse acceleration (click Advanced to get the dialog box for this).

4. Windows NT / Windows 98 / Windows 95:

Set the mouse speed to the slowest position.

Specifications

Function		KN2018	KN2116
Computer Connections		8	16
Port Selection		OSD / Hotkey	
Connectors	Console VGA	1 x HDB-15 F	
	Console K/M	2 x 6 pin mini DIN F (KB - Purp; M - Grn)	
	CPU Ports	8 x SPDB-15 F	16 x SPDB-15 F
	LAN	1 x RJ-45	
	PON Port	1 x DB-9 male	
	Power Socket	3 pin AC power jack	
Switches	Power	1 x Rocker switch	
	Reset	1 x Semi-recessed pushbutton	
	Port Up / Port Down	2 x pushbutton	
LEDs	On Line	8 (green)	16 (Green)
	Selected	8 (Orange)	16 (Orange)
	Link	1 (Green)	
	10 / 100Mbps	1 Orange / Green	
	Power	1 (Blue)	
I/P Rating		100V~240V, 50/60Hz; 250mA	
O/P Rating		120V / 60Hz 12W; 230V / 50Hz 12W	
Keyboard / Mouse Emulation		PS/2	
Scan Interval		User Specified: 1 - 255 secs.	
Video		1600 x 1200; DDC2B	
Environment		Operating Temperature: 0 - 50° C Storage Temperature: -20 - 60° C Humidity: 0 - 80% RH	
Housing		Metal	
Weight			4.2 kg
Dimensions (L x W x H)			43.72 x 26.0 x 4.4 cm (19" 1U)

OSD Factory Default Settings

The factory default settings are as follows:

Setting	Default
OSD Hotkey	[Scroll Lock] [Scroll Lock]
Port ID Display	Port Number + Name
Port ID Display Duration	3 Seconds
Scan/Skip Mode	All
Scan Duration	5 Seconds
Screen Blanker	0 Minutes (disabled)
Beeper	On
Accessible Ports	F (Full) For all Users on all Ports

Administrator Login Failure

If you are unable to perform an Administrator login (because the Username and Password information has become corrupted, or you have forgotten it, for example), you can clear the login information with the following procedure:

1. Power off the KN2018 / KN2116 and remove its housing.
2. Short the jumper labeled J8.
3. Power on the switch.
4. When the Link and 10/100Mbps LEDs flash, power off the switch.
5. Remove the jumper cap from J8.
6. Close the housing and start the KN2018 / KN2116 back up.

After you start back up, you can use the default Username and Password (see p. 23) to log in.

ALTUSEN Technical Support

North America Technical Phone Support	Registered ALTUSEN product owners are entitled to telephone technical support. Call the ALTUSEN Technical Support Center: 949-453-8885.
International Technical Phone Support	1. Contact your local dealer. 2. Call the ALTUSEN Technical Support Center: (886-2) 8692-6959.
Email Support	Email your questions and concerns to: support@altusen.com
Online Troubleshooting	The ALTUSEN website: http://www.altusen.com provides online troubleshooting that describes the most commonly encountered problems and offers possible solutions to them.
Online Documentation	User Manuals are available electronically at the ALTUSEN website: http://www.altusen.com
Software Updates	Download the latest drivers and firmware for your product from the ALTUSEN website: http://www.altusen.com

Product Information

For information about all of ALTUSEN's products and how they can help you connect without limits, visit ALTUSEN on the web at <http://www.altusen.com>

ALTUSEN Authorized Resellers

ALTUSEN provides the following ways to find an authorized reseller in your area:

- ◆ In the United States of America, call: 866-ALTUSEN (258-8736)
- ◆ In Canada and South America, call: 949-453-8885
- ◆ In all other locations, call: 886-2-8692-6789
- ◆ Visit ALTUSEN on the web at <http://www.altusen.com> for a list of locations and telephone numbers

Limited Warranty

ALTUSEN warrants this product against defects in material or workmanship for a period of one (1) year from the date of purchase. If this product proves to be defective, contact ALTUSEN's support department for repair or replacement of your unit. ALTUSEN will not issue a refund. Return requests can not be processed without the original proof of purchase.

When returning the product, you must ship the product in its original packaging or packaging that gives an equal degree of protection. Include your proof of purchase in the packaging and the RMA number clearly marked on the outside of the package.

This warranty becomes invalid if the factory-supplied serial number has been removed or altered on the product.

This warranty does not cover cosmetic damage or damage due to acts of God, accident, misuse, abuse, negligence or modification of any part of the product. This warranty does not cover damage due to improper operation or maintenance, connection to improper equipment, or attempted repair by anyone other than ALTUSEN. This warranty does not cover products sold AS IS or WITH FAULTS.

IN NO EVENT SHALL ALTUSEN'S LIABILITY EXCEED THE PRICE PAID FOR THE PRODUCT. FURTHER, ALTUSEN SHALL NOT BE RESPONSIBLE FOR DIRECT, INDIRECT, SPECIAL, INCIDENTAL OR CONSEQUENTIAL DAMAGES RESULTING FROM THE USE OF THE PRODUCT, ITS ACCOMPANYING SOFTWARE, OR ITS DOCUMENTATION. ALTUSEN SHALL NOT IN ANY WAY BE RESPONSIBLE FOR, WITHOUT LIMITATION, LOSS OF DATA, LOSS OF PROFITS, DOWNTIME, GOODWILL, DAMAGE OR REPLACEMENT OF EQUIPMENT OR PROPERTY, AND ANY EXPENSES FROM RECOVERY, PROGRAMMING, AND REPRODUCTION OF ANY PROGRAM OR DATA.

ALTUSEN makes no warranty or representation, expressed, implied, or statutory with respect to its products, contents or use of this documentation and all accompanying software, and specifically disclaims its quality, performance, merchantability, or fitness for any particular purpose.

ALTUSEN reserves the right to revise or update its product, software or documentation without obligation to notify any individual or entity of such revisions, or update.

For details about extended warranties, please contact one of our dedicated value added resellers.

Index

A

- Adjust video
 - Windows Client 51
- Administration 23
- Administration page 25
- Administrator Login Failure. 82
- Administrator Utility
 - Customization page 32
- Auto Scanning 47
 - Invoking Auto Scan 47
 - Pausing Auto Scan 48
 - Scan Duration. 60
 - Setting the Scan Interval 47

B

- Browser log in 37
- Browser operation 37

C

- Cables 5
- Clear Name List 32
- Components
 - Front View 6
 - Rear View 8
- Configuration
 - Java Client 66
- Configuration page. 59
- Configure
 - Log Server 71
- Control Panel
 - Java Client 62
 - Windows Client 49
- Corrupt Password 82
- Customization settings 32

D

- Date/Time setting 35

E

- Edit Port Names 33

F

- Factory Default Settings. 81
- Features 3
- Firmware
 - Upgrading 32, 36
- Forgotten Password 82
- Front view 6

G

- Gamma adjustment 54
- General dialog box. 39

H

- Hardware Setup 11
- Hot Plugging 20
- Hotkey
 - OSD 60
- Hotkey operation 47, 66
 - auto scanning 47
- Hotkeys
 - Windows Client. 50

I

- Installation
 - Single Station. 15
 - Two Stage 18
- Invalid login 38

J

- Java client. 61, 63, 65
 - Keypad. 63
 - Lock key LEDs 64
 - Troubleshooting. 77
- Java client control panel. 62

L

- List Panel 76
- Local Console. 23
- Lock key LEDs 64

Log file	67	Numbering	20
Main Screen	67	Port ID display mode	60
Log Server		Port names	34
Configure	71	Port operation	
Events	72	Java Client	66
Installation	69	Windows Client	45
KN2116 Main Screen	75	Port Selection	21
Main Screen	70	Powering Off and Restarting	21
Maintenance	74		
Menu Bar	71	Q	
Options	74	Quick View status	33
Search	72		
Starting Up	70	R	
Logging in	37	Rack mounting	13
Login		Safety information	vi
Failure	32	Rear view	8
Invalid login	38	Reset on exit	32, 39
		Reset Values	32
M			
Main page	43	S	
Main web page	38	Safety Instructions	iv
Mouse Synchronization	58, 64	Scan Duration	60
		SCAN/SKIPMODE	60
N		Screen Blanker	60
Network settings	28	Security settings	30
		Set Port	33
O		Setting the Auto Scan Interval	47
OSD		Single Station Installation	15
activating - Java	61	Skip Mode	48, 60
activating - Windows	41	Specifications	80
configuration page	59	Stacking	12
Factory Default Settings	81	Substitute keys	57
Hotkey	60	System Requirements	
main page	43	Cables	5
Overview	1	Computers	4
		Remote Computers	4
P			
Panel Array Mode		T	
Java Client	65	Tick Panel	76
Windows Client	55	Toolbar	
Port ID		Windows Client	45

Troubleshooting		Java Client	63
General operation	77	Windows Client	52
Java Client	77		
Windows Client	78		
Two Stage Installation	18		
U		W	
Upgrading firmware	32	Web page	
Upgrading the Firmware	36	buttons	40
User Management	26	icons	40
		layout	39
		Windows Client	2, 41
		Hotkeys	50
		Troubleshooting	78
V			
Video Adjustment			

Free Manuals Download Website

<http://myh66.com>

<http://usermanuals.us>

<http://www.somanuals.com>

<http://www.4manuals.cc>

<http://www.manual-lib.com>

<http://www.404manual.com>

<http://www.luxmanual.com>

<http://aubethermostatmanual.com>

Golf course search by state

<http://golfingnear.com>

Email search by domain

<http://emailbydomain.com>

Auto manuals search

<http://auto.somanuals.com>

TV manuals search

<http://tv.somanuals.com>