

**WILLIAMSBURG ELITE™ 5' INTEGRAL APRON  
WHIRLPOOL**

Comfortable bathing design with form-fitted  
backrest and molded-in armrests

- 2425E-LHO Left Hand Drain Outlet  
(specify White 020, Bone 021, or Linen 222)**
- 2425E-RHO Right Hand Drain Outlet  
(specify White 020, Bone 021, or Linen 222)**
  - Acrylic with fiberglass reinforcement
  - Integral apron with removable access panel
  - Integral three-sided, tiling / water retention flange
  - 1.5 HP self-draining pump/motor with dry run seal
  - Eight multi-directional and flow adjustable jets including:
    - Two high performance Ideal-flow™ Jets
    - Six interchangeable Flex-jets™
  - Two silent air volume controls
  - Deck-mounted On/Off control
  - Complete factory installed and tested whirlpool system
- 2425EC-LHO Left Hand Drain Outlet  
(specify White 020, Bone 021, or Linen 222)**
- 2425EC-RHO Right Hand Drain Outlet  
(specify White 020, Bone 021, or Linen 222)**
  - Same as above with the StayClean™ whirlpool system featuring Antimicrobial AlphaSan®

Nominal Dimensions:  
60" x 32" x 21-1/2"  
(1524 x 813 x 546mm)



**Components Needed:**

- Bath Filler\*: (specify finish)
- Bath Drain: BATH-DRAIN  
(specify Chrome 002, Polished Brass 099,  
or Satin 295)

**Custom Accessories Available:**

- Pulse Jet Kit: PULSE-JET (two per kit, specify  
White 020, Bone 021, or Linen 222)
- Soft Jet Kit: SOFT-JET (two per kit, specify  
White 020, Bone 021, or Linen 222)
- E-Z-Install™ Whirlpool Heater - EZHEAT-100

\* See American Standard Faucet Selector

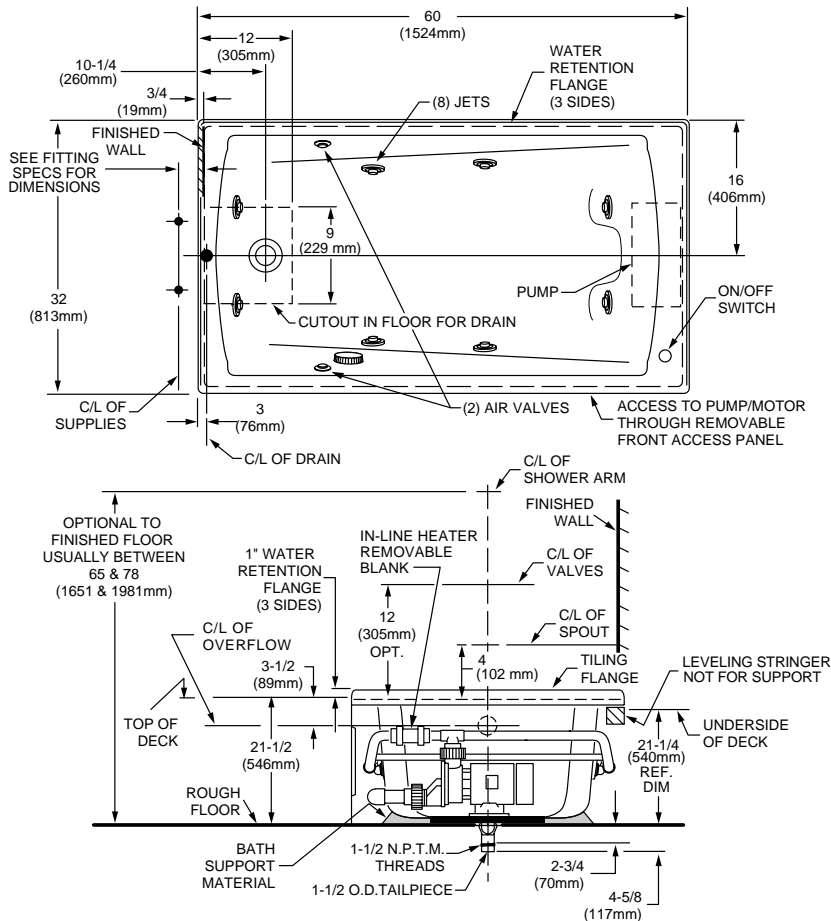
**Compliance Certifications -**

**Meets or Exceeds the Following Specifications:**

- Underwriters Laboratories - Hydromassage  
Bathtubs UL 1795
- ASME A112.19.7M for Whirlpool Appliances
- ANSI Z124.1 for Plastic Bathtubs
- ASTM E162 for Flammability
- NFPA 258 for Smoke Density

NOTE: E-Z-Install™ Whirlpool Heater is designed to  
maintain water temperature during operation. It will not  
heat cold water to desired bathing temperature.

**NOTE:** Roughing-in dimensions and product  
specifications shown on reverse side of page.



GENERAL SPECIFICATIONS FOR 2425E WHIRLPOOL	
INSTALLED SIZE	60 x 32 x 21-1/2 (1524 x 813 x 546mm)
WEIGHT	115 Lbs. (52 Kg.)
WEIGHT w/WATER	574 Lbs. (258 Kg.)
GAL. TO OVERFLOW	55 Gal. (208 L.)
WHIRLPOOL MIN. OPERATING VOL.	45 Gal. (171 L.)
BATHING WELL AT SUMP	16-1/4 x 38-1/4 (413 x 972mm)
BATHING WELL AT RIM	26-1/4 x 52-1/2 (667 x 1334mm)
WATER DEPTH TO OVERFLOW	15 (381mm)
FLOOR LOADING (PROJECTED AREA)	43 Lbs./Sq.Ft. (208 Kgs./Sq.m)
PTS.	20.8
CUBE (FT <sup>3</sup> )	35.3
WHIRLPOOL ELECTRICAL SPECIFICATIONS	
PUMP	1.6 HP, 9.7 AMPS, 120V.

**NOTES:**

BATH CAN BE INSTALLED EITHER ABOVE OR BELOW FLOOR LINE AS PIER, ISLAND, OR PENINSULA TYPE INSTALLATION. SUPPORT OF BATH BY SUMP BEDDING. SUPPORT AND ENCLOSING MATERIAL BY OTHERS. REFER TO INSTALLATION INSTRUCTIONS SUPPLIED WITH WHIRLPOOL FOR ADDITIONAL INFORMATION. FITTINGS NOT INCLUDED AND MUST BE ORDERED SEPARATELY. PROVIDE SUITABLE REINFORCEMENT FOR ALL SUPPORTS.

**IMPORTANT:**

Dimensions of fixtures are nominal and may vary within the range of tolerances established by ANSI Standard Z124.1 These measurements are subject to change or cancellation. No responsibility is assumed for use of superseded or voided leaflet.

## Free Manuals Download Website

<http://myh66.com>

<http://usermanuals.us>

<http://www.somanuals.com>

<http://www.4manuals.cc>

<http://www.manual-lib.com>

<http://www.404manual.com>

<http://www.luxmanual.com>

<http://aubethermostatmanual.com>

Golf course search by state

<http://golfingnear.com>

Email search by domain

<http://emailbydomain.com>

Auto manuals search

<http://auto.somanuals.com>

TV manuals search

<http://tv.somanuals.com>