

Addonics

TECHNOLOGIES

Dual CF-SATA HDD Adapter

Model: AD2SAHDCF

User's Guide

Version 1.0

FCC Warning Statement

This equipment has been tested and found to comply with the limits for a class B digital device pursuant to Part 15 of the FCC rules. These limits are designed to provide reasonable protection against harmful interference in a residential installation. This equipment generates, uses and can radiate radio frequency energy. If not installed and used in accordance with the instructions, it may cause harmful interference to radio communications. However, there is no guarantee that interference will not occur in a particular installation. If the equipment does cause harmful interference to radio or television reception, which can be determined by turning the equipment on and off, the user is encouraged to try and correct the interference by one or more of the following suggestions.

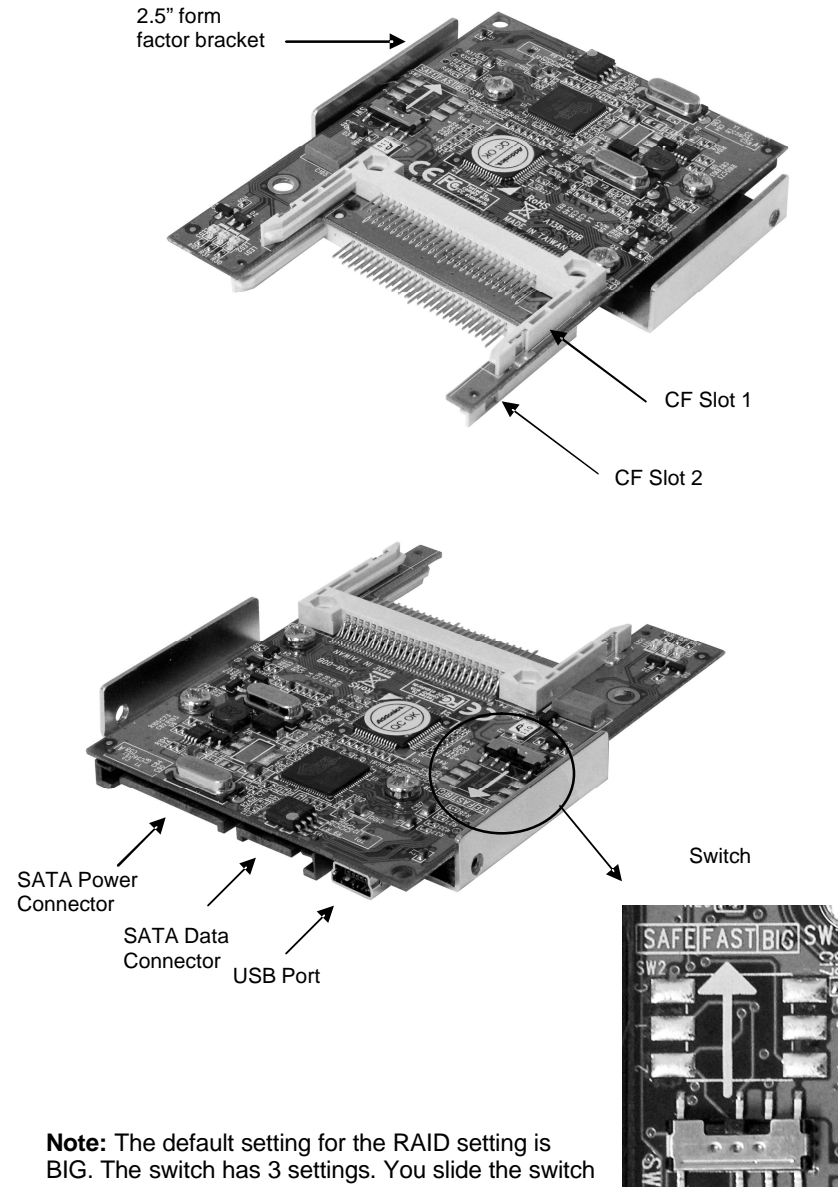
Reorient or relocate the receiving antenna

Increase the distance between the equipment and the receiver

Connect the equipment to a different power outlet other than the one where receiver is connected

Consult a certified television or radio technician

Overview



Note: The default setting for the RAID setting is BIG. The switch has 3 settings. You slide the switch from left to right to change RAID setting.

Recommendations on using the AD2SAHDCF as a boot device

The CF cards plug into the AD2SAHDCF can be configured as your boot drive. It is recommended that the CF cards be configured as a raid set first by connecting it as an external device.

Steps:

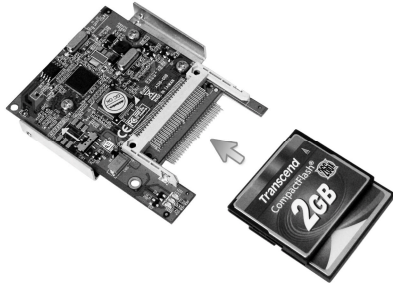
1. 57xx SteelVine Manager Utility Installation

Note: To monitor the status of your raid set, you need to install the Sil5744 SteelVine Manager. Install the utility from the CD that came with your package.

- Turn computer ON. Insert Host Controller Driver Disk into CDROM.
- The Addonics Technologies Driver Disk window pops up.
- Select Configuration Utilities. Sil5744 SteelVine Manager. To extract the utility select your operating system from the list.
- Extract the files into your system.
- Install Sil5744 Manager by clicking the **5700Package.msi**. Follow the instructions.
- After software installation, run the SteelVine Manager.

The 57xx SteelVine Manager Utility manual can found in the Driver Disk under User Guides or can be downloaded from http://www.addonics.com/support/user_guides/host_controller/Sil57XX_Users_Guide_Rev_1.0.pdf

2. Insert the CF cards to the CF slots on the AD2SAHDCF.

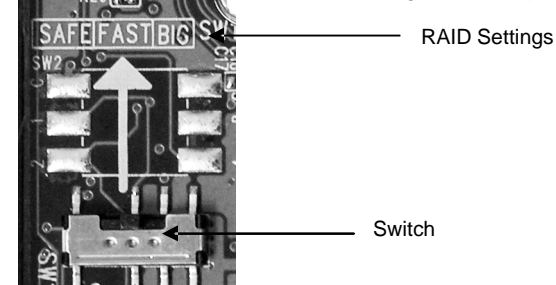


3. RAID Configuration.

Note: SATA Connection: The act of connecting and disconnecting the **SATA power cable** serves as the RAID Setting button to confirm RAID mode setting.

USB Connection: The act of connecting and disconnecting the **USB cable** serves as the RAID Setting button to confirm RAID mode setting.

- Set the switch to the RAID configuration required.



- SATA Connection:** Connect the SATA data and power cable to the AD2SAHDCF to confirm RAID mode setting.

USB Connection: Connect the USB cable to the AD2SAHDCF to confirm RAID mode setting.

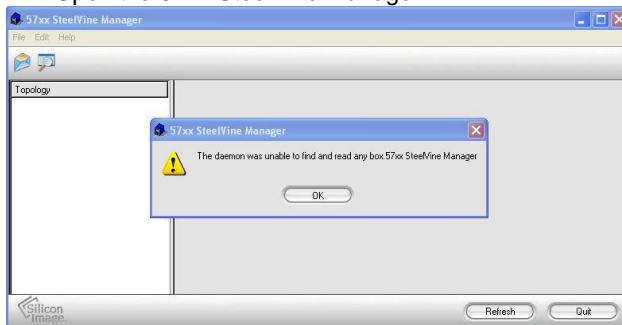
- Check in the 57xx SteelVine Manager if the RAID configuration is correct.

4. Once you have confirmed you had configured the correct raid set you want for the CF cards, you can then connect the AD2SAHDCF to a SATA port to be able to make it as a boot drive.

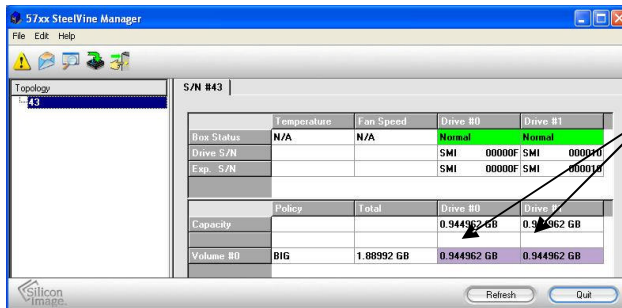
Installing a fresh install of the operating system will be the same as installing it on a SATA hard drive.

Steps to configure a SAFE RAID set using USB connection (Windows XP)

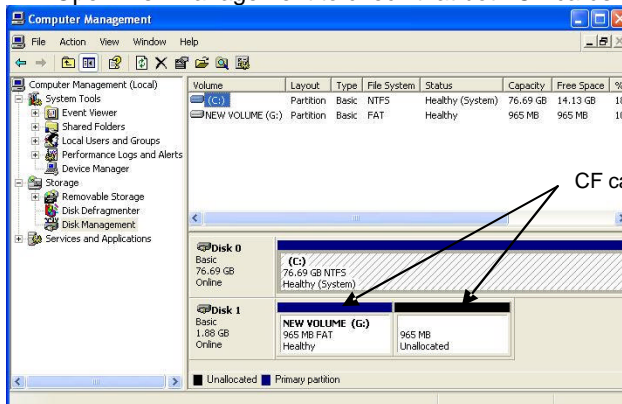
1. Open the 57xx SteelVine Manager.



2. Insert the 2 CF cards to the CF slots on the AD2SAHDCF.
3. Connect the USB cable to the AD2SAHDCF. The 57xx SteelVine Manager detects the 2 CF cards in the AD2SAHDCF.

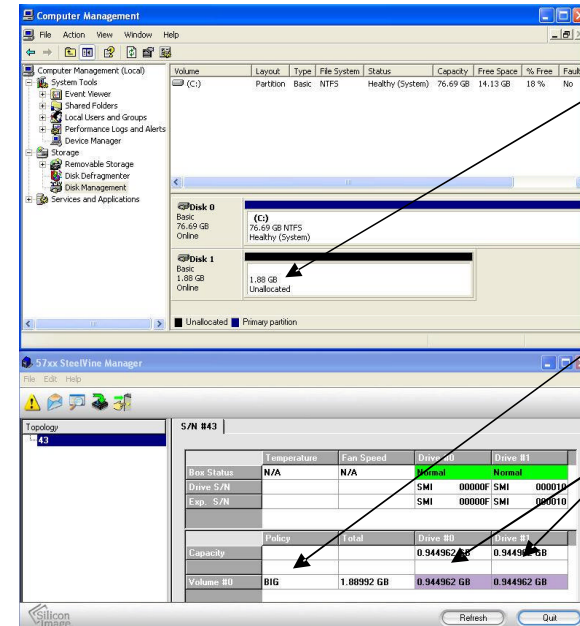


4. Open Disk Management to check that both CF cards are detected.

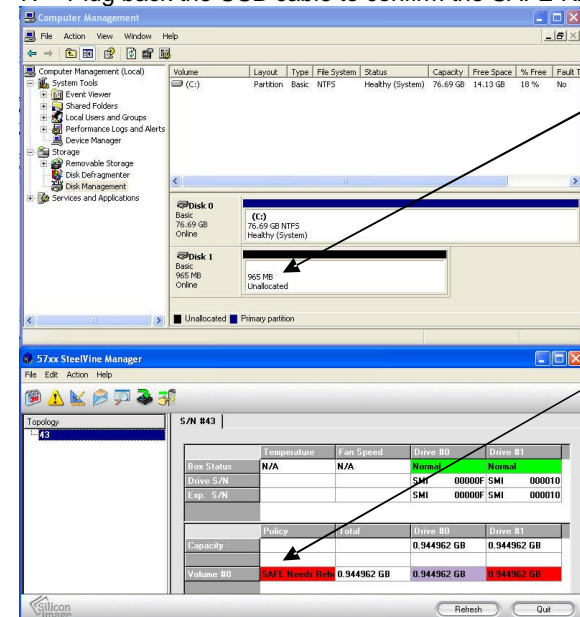


*You will see an unallocated or partition depending if the CF card had been used. Delete the partition to make it into one BIG virtual disk.

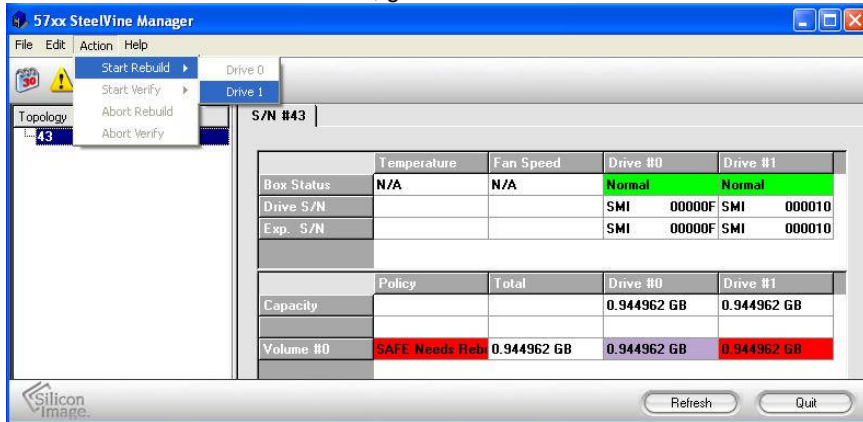
Screenshot of Disk Management and 57xx SteelVine Manager showing CF card status



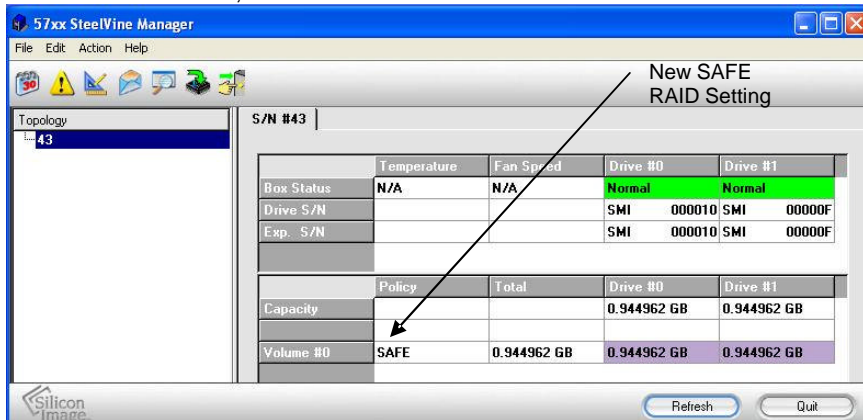
5. Unplug the USB cable.
6. Place the switch to SAFE mode.
7. Plug back the USB cable to confirm the SAFE RAID setting.



8. To rebuild the SAFE RAID set, go to Action > Start Rebuild > Drive 1



Once Rebuild is done, this is the result.



Note: The steps for creating BIG or FAST RAID set would be similar with the steps on creating SAFE RAID set. Only select the correct switch setting.

Technical Support

If you need assistance to get your unit functioning properly, please call Addonics Technical Support. Our technical staff will be happy to assist you, but they will need your help to do so. Calling the technical support staff without all the proper information can be both time consuming and frustrating. Here are some tips to help you out:

- MODEL NUMBER – Please have this number on hand.
- SYSTEM INFORMATION – Type of computer, peripherals, etc.
- OPERATING SYSTEM – What version of Windows
- WHAT'S THE TROUBLE? – Give enough information about your problem so that we can recreate and diagnose it.

FREE Software Drivers for all Addonics Technologies Products are available 24 hours per day at the World Wide Web Site: www.addonics.com.

Contact Information

Phone: 408-433-3899
 Fax: 408-433-3898
 Email: <http://www.addonics.com/sales/query/>
 Internet: <http://www.addonics.com>

TECHNICAL SUPPORT

Phone: 408-433-3855
 Hours: 8:30 am - 6:00 pm PST
 Email: <http://www.addonics.com/support/query/>

Free Manuals Download Website

<http://myh66.com>

<http://usermanuals.us>

<http://www.somanuals.com>

<http://www.4manuals.cc>

<http://www.manual-lib.com>

<http://www.404manual.com>

<http://www.luxmanual.com>

<http://aubethermostatmanual.com>

Golf course search by state

<http://golfingnear.com>

Email search by domain

<http://emailbydomain.com>

Auto manuals search

<http://auto.somanuals.com>

TV manuals search

<http://tv.somanuals.com>