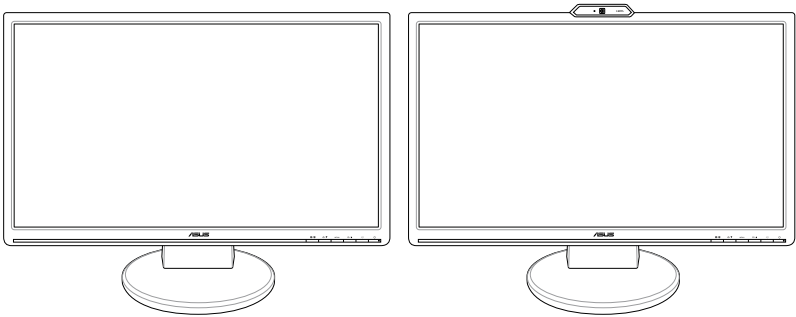




VW246 / VK246

LCD Monitor

User's manual



E4076

First Edition V1

August 2008

Copyright © 2008 ASUSTeK COMPUTER INC. All Rights Reserved.

No part of this manual, including the products and software described in it, may be reproduced, transmitted, transcribed, stored in a retrieval system, or translated into any language in any form or by any means, except documentation kept by the purchaser for backup purposes, without the express written permission of ASUSTeK COMPUTER INC. ("ASUS").

Product warranty or service will not be extended if: (1) the product is repaired, modified or altered, unless such repair, modification or alteration is authorized in writing by ASUS; or (2) the serial number of the product is defaced or missing.

ASUS PROVIDES THIS MANUAL "AS IS" WITHOUT WARRANTY OF ANY KIND, EITHER EXPRESS OR IMPLIED, INCLUDING BUT NOT LIMITED TO THE IMPLIED WARRANTIES OR CONDITIONS OF MERCHANTABILITY OR FITNESS FOR A PARTICULAR PURPOSE. IN NO EVENT SHALL ASUS, ITS DIRECTORS, OFFICERS, EMPLOYEES OR AGENTS BE LIABLE FOR ANY INDIRECT, SPECIAL, INCIDENTAL, OR CONSEQUENTIAL DAMAGES (INCLUDING DAMAGES FOR LOSS OF PROFITS, LOSS OF BUSINESS, LOSS OF USE OR DATA, INTERRUPTION OF BUSINESS AND THE LIKE), EVEN IF ASUS HAS BEEN ADVISED OF THE POSSIBILITY OF SUCH DAMAGES ARISING FROM ANY DEFECT OR ERROR IN THIS MANUAL OR PRODUCT.

SPECIFICATIONS AND INFORMATION CONTAINED IN THIS MANUAL ARE FURNISHED FOR INFORMATIONAL USE ONLY, AND ARE SUBJECT TO CHANGE AT ANY TIME WITHOUT NOTICE, AND SHOULD NOT BE CONSTRUED AS A COMMITMENT BY ASUS. ASUS ASSUMES NO RESPONSIBILITY OR LIABILITY FOR ANY ERRORS OR INACCURACIES THAT MAY APPEAR IN THIS MANUAL, INCLUDING THE PRODUCTS AND SOFTWARE DESCRIBED IN IT.

Products and corporate names appearing in this manual may or may not be registered trademarks or copyrights of their respective companies, and are used only for identification or explanation and to the owners' benefit, without intent to infringe.

Contents

Contents	iii
Notices	iv
Safety information	v
Care & Cleaning	vi
1. Product introduction	1
1.1 Welcome!	1
1.2 Package contents	1
1.3 Monitor introduction	2
2. Setup	4
2.1 Assembling the monitor base	4
2.2 Adjusting the monitor	4
2.3 Detaching the arm/base (for VESA wall mount)	5
2.4 Connecting the cables	6
2.5 Turning on the monitor	6
2.6 Built-in webcam support	7
2.7 LifeFrame 2 software	7
3. General Instruction	8
3.1 OSD (On-Screen Display) menu	8
3.2 Specifications summary	11
3.3 Troubleshooting (FAQ)	13
3.4 Supported operating modes	14

Notices

Federal Communications Commission Statement

This device complies with Part 15 of the FCC Rules. Operation is subject to the following two conditions:

- This device may not cause harmful interference, and
- This device must accept any interference received including interference that may cause undesired operation.

This equipment has been tested and found to comply with the limits for a Class B digital device, pursuant to Part 15 of the FCC Rules. These limits are designed to provide reasonable protection against harmful interference in a residential installation. This equipment generates, uses and can radiate radio frequency energy and, if not installed and used in accordance with manufacturer's instructions, may cause harmful interference to radio communications. However, there is no guarantee that interference will not occur in a particular installation. If this equipment does cause harmful interference to radio or television reception, which can be determined by turning the equipment off and on, the user is encouraged to try to correct the interference by one or more of the following measures:

- Reorient or relocate the receiving antenna.
- Increase the separation between the equipment and receiver.
- Connect the equipment to an outlet on a circuit different from that to which the receiver is connected.
- Consult the dealer or an experienced radio/TV technician for help.



The use of shielded cables for connection of the monitor to the graphics card is required to assure compliance with FCC regulations. Changes or modifications to this unit not expressly approved by the party responsible for compliance could void the user's authority to operate this equipment.

As an Energy Star® Partner, our company has determined that this product meets the Energy Star® guidelines for energy efficiency.

Canadian Department of Communications Statement

This digital apparatus does not exceed the Class B limits for radio noise emissions from digital apparatus set out in the Radio Interference Regulations of the Canadian Department of Communications.

This class B digital apparatus complies with Canadian ICES-003.

Safety information

- Before setting up the monitor, carefully read all the documentation that came with the package.
- To prevent fire or shock hazard, never expose the monitor to rain or moisture.
- Never try to open the monitor cabinet. The dangerous high voltages inside the monitor may result in serious physical injury.
- If the power supply is broken, do not try to fix it by yourself. Contact a qualified service technician or your retailer.
- Before using the product, make sure all cables are correctly connected and the power cables are not damaged. If you detect any damage, contact your dealer immediately.
- Slots and openings on the back or top of the cabinet are provided for ventilation. Do not block these slots. Never place this product near or over a radiator or heat source unless proper ventilation is provided.
- The monitor should be operated only from the type of power source indicated on the label. If you are not sure of the type of power supply to your home, consult your dealer or local power company.
- Use the appropriate power plug which complies with your local power standard.
- Do not overload power strips and extension cords. Overloading can result in fire or electric shock.
- Avoid dust, humidity, and temperature extremes. Do not place the monitor in any area where it may become wet. Place the monitor on a stable surface.
- Unplug the unit during a lightning storm or if it will not be used for a long period of time. This will protect the monitor from damage due to power surges.
- Never push objects or spill liquid of any kind into the slots on the monitor cabinet.
- To ensure satisfactory operation, use the monitor only with UL listed computers which have appropriate configured receptacles marked between 100-240V AC.
- If you encounter technical problems with the monitor, contact a qualified service technician or your retailer.



This symbol of the crossed out wheeled bin indicates that the product (electrical, electronic equipment and mercury-containing button cell battery) should not be placed in municipal waste. Please check local regulations for disposal of electronic products.

Care & Cleaning

- Before you lift or reposition your monitor, it is better to disconnect the cables and power cord. Follow the correct lifting techniques when positioning the monitor. When lifting or carrying the monitor, grasp the edges of the monitor. Do not lift the display by the stand or the cord.
- Cleaning. Turn your monitor off and unplug the power cord. Clean the monitor surface with a lint-free, non-abrasive cloth. Stubborn stains may be removed with a cloth dampened with mild cleaner.
- Avoid using a cleaner containing alcohol or acetone. Use a cleaner intended for use with the LCD. Never spray cleaner directly on the screen, as it may drip inside the monitor and cause an electric shock.

The following symptoms are normal with the monitor:

- The screen may flicker during the initial use due to the nature of the fluorescent light. Turn off the Power Switch and turn it on again to make sure that the flicker disappears.
- You may find slightly uneven brightness on the screen depending on the desktop pattern you use.
- When the same image is displayed for hours, an afterimage of the previous screen may remain after switching the image. The screen will recover slowly or you can turn off the Power Switch for hours.
- When the screen becomes black or flashes, or cannot work anymore, contact your dealer or service center to fix it. Do not repair the screen by yourself!

Conventions used in this guide

To make sure that you perform certain tasks properly, take note of the following symbols used throughout this manual.



DANGER/WARNING: Information to prevent injury to yourself when trying to complete a task.



CAUTION: Information to prevent damage to the components when trying to complete a task.



IMPORTANT: Instructions that you **MUST** follow to complete a task.



NOTE: Tips and additional information to help you complete a task.

Where to find more information

Refer to the following sources for additional information and for product and software updates.

1. ASUS websites

The ASUS websites worldwide provide updated information on ASUS hardware and software products. Refer to <http://www.asus.com>

2. Optional documentation

Your product package may include optional documentation that may have been added by your dealer. These documents are not part of the standard package.

1. Product introduction

1.1 Welcome!

Thank you for purchasing the ASUS® VW246/VK246 LCD monitor!

The latest widescreen LCD monitor from ASUS provides a crisper, broader, and brighter display, plus a host of features that enhance your viewing experience. Besides, VK246 provides the built-in 1.3 mega-pixel webcam, which enhances image quality. No need for installing additional driver while having a video conference or chatting with friends online!

With these features, you can enjoy the convenience and delightful audio-visual experience that VW246/VK246 brings you!

1.2 Package contents

Check your VW246/VK246 LCD monitor package for the following items:

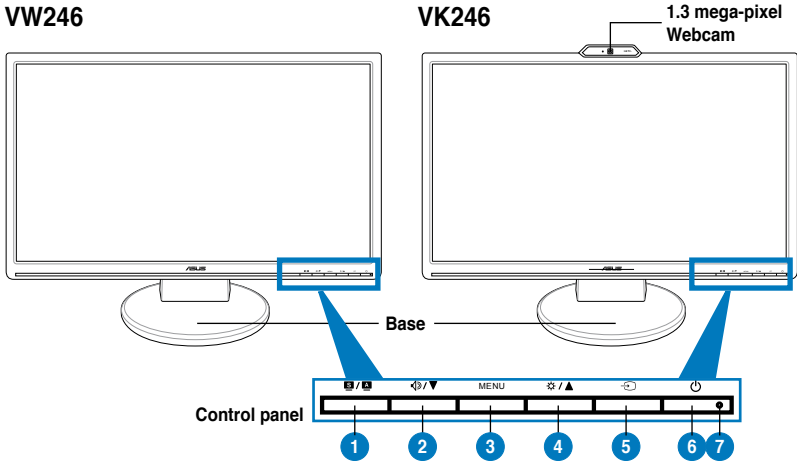
- LCD monitor
- Support CD (VK246 only)
- Quick start guide
- Power cord x1
- VGA cable x1
- DVI cable x1
- USB 2.0 cable x1 (VK246 only)
- Audio cable x1



If any of the above items is damaged or missing, contact your retailer immediately.

1.3 Monitor introduction


1.3.1 Front view



- S / A** button:
 - Use this hotkey to switch from five video preset modes (Game Mode, Night View Mode, Scenery Mode, Standard Mode, Theater Mode) with **SPLENDID™** Video Enhancement Technology.
 - Exit the OSD menu or go back to the previous menu as the OSD menu is active.
 - Automatically adjust the image to its optimized position, clock, and phase by pressing this button for 2–3 seconds (VGA input only).
- Volume / Navigation** button:
 - Press this button to decrease the value of the function selected or move left/up to the previous function.
 - This is also a hotkey for Volume adjustment.
- MENU** button:
 - Press this button to enter/select the icon (function) highlighted while the OSD is activated.
- Brightness / Navigation** button:
 - Press this button to increase the value of the function selected or move right/down to the next function.
 - This is also a hotkey for Brightness adjustment.
- Input Select** button:
 - Use this hotkey to switch among the three input sources (VGA, DVI, HDMI).



Press **Input Select** (Input Select Button) to display HDMI signals after you connect HDMI cable with monitor.

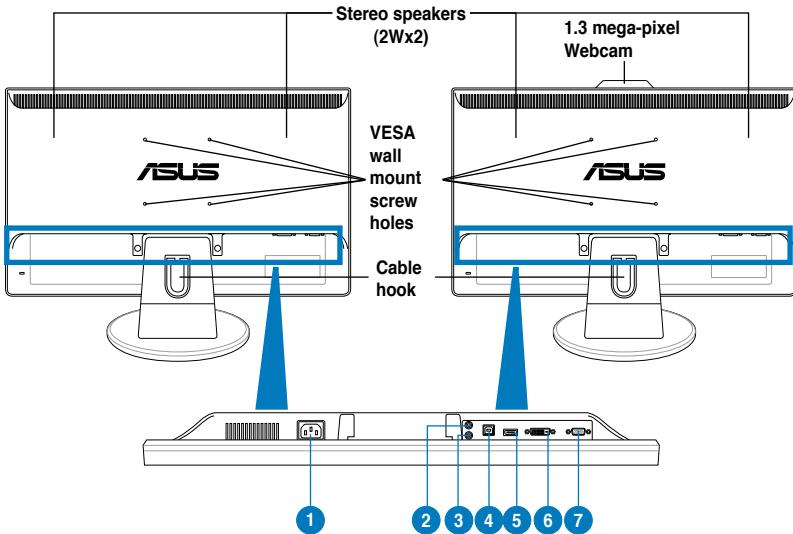
6.  button
 - Press this button to turn the monitor on/off
7. Power indicator
 - The color definition of the power indicator is as the table at the right side.

Status	Description
Blue	ON
Amber	Standby mode
OFF	OFF

1.3.2 Back view

VW246

VK246



Rear connectors

1. **AC-IN port.** Connects the power cord.
2. **Audio out port.** Connects to external speakers.
3. **Audio in port.** Connects to PC audio source.
4. **USB 2.0 port (VK246 only).** For activating the built-in webcam.
5. **HDMI port.** For high-definition multimedia interface (HDMI) signal connection.
6. **DVI port.** For DVI-D digital signal connection.
7. **VGA port.** For VGA analog signal connection.



The VESA wall mount kit (100 mm x 100 mm) is purchased separately.

2. Setup

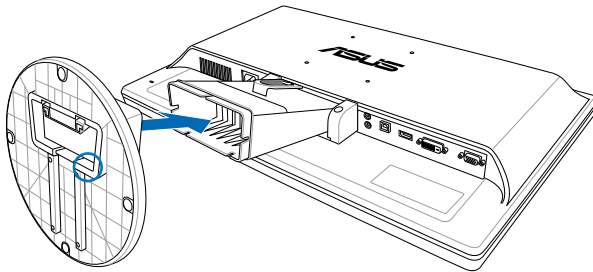
2.1 Assembling the monitor base

To assemble the monitor base:

1. Have the front of the monitor face down on a table.
2. Connect the base with the arm according to the below drawing. A click sound shows that the base has been connected successfully.

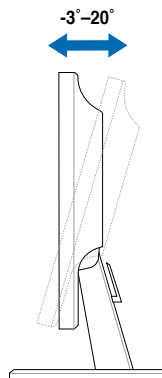


We recommend that you cover the table surface with soft cloth to prevent damage to the monitor.



2.2 Adjusting the monitor

- For optimal viewing, we recommend that you look at the full face of the monitor, then adjust the monitor to the angle that is most comfortable for you.
- Hold the stand to prevent the monitor from falling when you change its angle.
- You can adjust the monitor's angle from -3° – 20° .



It is normal that the monitor slightly shakes while you adjust the the viewing angle.

2.3 Detaching the arm/base (for VESA wall mount)

The detachable arm/base of the VW246/VK246 LCD monitor is specially designed for VESA wall mount.

To detach the arm/base:

1. Have the front of the monitor face down on a table.
2. Remove the rubbers in the four screw holes (Figure 1).
3. Use a screwdriver to remove the two arm screws, and then slide out the arm/base to detach it from the monitor (Figure 2).

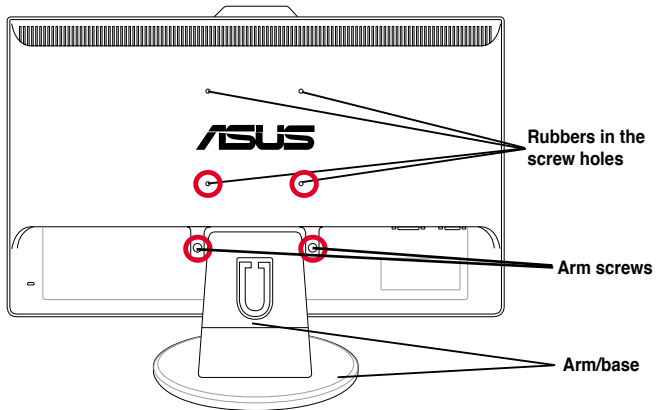


Figure 1

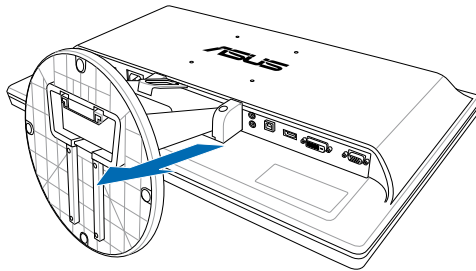


Figure 2

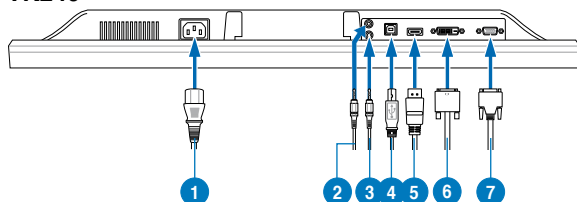


We recommend that you cover the table surface with soft cloth to prevent damage to the monitor.

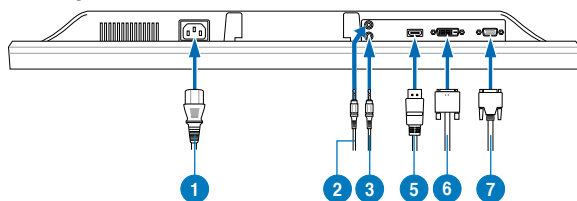
2.4 Connecting the cables

Connect the cables as shown:

VK246



VW246



- | |
|----------------------|
| 1. Power cord |
| 2. Audio-out cable |
| 3. Audio-in cable |
| 4. USB 2.0 cable |
| 5. HDMI signal cable |
| 6. DVI signal cable |
| 7. VGA signal cable |



The HDMI cable and audio-out cable are purchased separately.

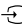
- **To connect the power cord:** connect one end of the power cord securely to the monitor's AC input port, the other end to a power outlet.



Before you connect the cables, ensure that your PC is switched off or the power cord is unplugged from the wall socket.

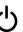
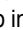
- **To connect the signal cables:** connect one end of the signal cable(s) to the monitor, the other end to your computer or any other video device.



When the HDMI, DVI, and VGA cables are connected simultaneously, you can switch the input source from the Input Select item of the OSD functions, or by using the hotkey  on the front panel.

- **To connect the audio cable:** connect the audio cable from the monitor's audio-in port to the computer's audio-out port.
- **To connect to external speakers:** Connect an audio-out cable from the audio-out port of the LCD monitor to the audio-in port of external speakers.

2.5 Turning on the monitor

Gently press the power button . See page 2 for the location of the power button. The power indicator  lights up in blue to show that the monitor is ON.

2.6 Built-in webcam support

With the built-in webcam, VK246 allows you to take pictures, have a video conference, or record video clips. While chatting with friends via Internet-based communication tools, you can directly show your vivid image.

System requirements

- A personal computer with Pentium® III 800 MHz or higher processor
- Microsoft® Windows® Vista / XP Service Pack 2 (3) operating systems
- Minimum 200 MB free hard disk space to run the program
- 128 MB of RAM or above
- A display card supporting 16-bit high color mode



-
- Make sure that the bundled USB cable is connected to both the LCD monitor and your PC. Otherwise, the webcam will not be activated.
 - Make sure that you have installed the Windows® Vista / XP Service Pack 2 (3) or later versions before using the device.
-

Using the device

The device transmits images to your PC through the USB 2.0 port. Therefore, make sure that the bundled USB cable is connected to both the LCD monitor and your PC before you use the device.

2.7 LifeFrame 2 software

ASUS VK246 provides the easy-to-use LifeFrame 2 software that can work with the webcam, allowing users to create their own photos or video clips.



-
- LifeFrame 2 only supports Microsoft® Windows® Vista / XP Service Pack 2 (3) operating systems.
 - The LifeFrame 2 software is bundled in the support CD.
-

Installation instructions

1. Close all other applications.
2. Insert the support CD into the optical drive and run the LifeFrame 2 program.
3. Follow the on-screen instructions to complete the installation

3. General Instruction

3.1 OSD (On-Screen Display) menu

3.1.1 How to reconfigure

1. Press the MENU button to activate the OSD menu.
2. Press \star / \blacktriangle and $\blacktriangleleft / \blacktriangledown$ to navigate through the functions. Highlight and activate the desired function by pressing the MENU button. If the function selected has a sub-menu, press \star / \blacktriangle and $\blacktriangleleft / \blacktriangledown$ again to navigate through the sub-menu functions. Highlight and activate the desired sub-menu function by pressing the MENU button.
3. Press \star / \blacktriangle and $\blacktriangleleft / \blacktriangledown$ to change the settings of the selected function.
4. To exit the OSD menu, press the \blacksquare button. Repeat step 2 and step 3 to adjust any other function.



3.1.2 OSD Function Introduction

1. Splendid

This function contains five sub-functions you can select for your preference. Each mode has the Reset selection, allowing you to maintain your setting or return to the preset mode.



- **Scenery Mode:** best choice for scenery photo display with SPLENDID™ Video Enhancement.
- **Standard Mode:** best choice for document editing with SPLENDID™ Video Enhancement.
- **Theater Mode:** best choice for movie with SPLENDID™ Video Enhancement.
- **Game Mode:** best choice for game playing with SPLENDID™ Video Enhancement.
- **Night View Mode:** best choice for dark-scene game or movie with SPLENDID™ Video Enhancement.



- In the Standard Mode, the **ASCR**, **Saturation**, and **Sharpness** functions are not user-configurable.
- Except in the Standard Mode, the **sRGB** function is not user-configurable.

2. Image

You can adjust brightness, contrast, sharpness, saturation, position (VGA input only), ASCR, and focus (VGA input only) from this main function.



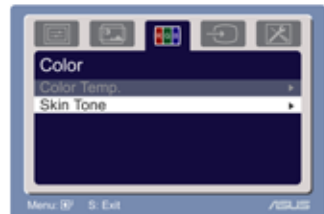
- **Brightness:** the adjusting range is from 0 to 100. ✖ / ▲ is a hotkey to activate this function.
- **Contrast:** the adjusting range is from 0 to 100.
- **ASCR:** turns on/off the ASCR(ASUS Smart Contrast Ratio) function.
- **Sharpness:** the adjusting range is from 0 to 100.
- **Saturation:** the adjusting range is from 0 to 100.
- **Position:** adjusts the horizontal position (H-Position) and the vertical position (V-Position) of the image. The adjusting range is from 0 to 100.
- **Focus:** reduces Horizontal-line noise and Vertical-line noise of the image by adjusting (Phase) and (Clock) separately. The adjusting range is from 0 to 100.



- Phase adjusts the phase of the pixel clock signal. With a wrong phase adjustment, the screen shows horizontal disturbances.
- Clock (pixel frequency) controls the number of pixels scanned by one horizontal sweep. If the frequency is not correct, the screen shows vertical stripes and the image is not proportional.

3. Color

Select the image color you like from this function.



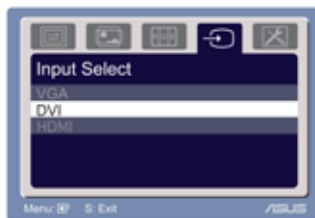
- **Color Temp.:** contains five color modes including Cool, Normal, Warm, sRGB, and User mode.
- **Skin Tone:** contains three color modes including Reddish, Natural, and Yellowish.



In the User mode, colors of R (Red), G (Green), and B (Blue) are user-configurable; the adjusting range is from 0-100.

4. Input Select

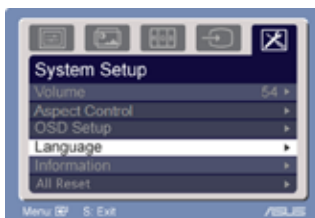
Select from VGA, DVI, and HDMI input sources.



5. System Setup

Allow you to adjust the system.

- **Volume:** the adjusting range is from 0 to 100. ⏪/▼ is a hotkey to activate this function.
- **OSD Setup:**
 - * Adjusts the horizontal position (H-Position)/ the vertical position (V-Position) of the OSD from 0 to 100.
 - * Adjusts the OSD timeout from 10 to 120.
 - * Enables or disables the DDC/CI function.
- **Language:** there are ten languages for your selection, including English, German, Italian, French, Dutch, Spanish, Russian, Traditional Chinese, Simplified Chinese, and Japanese.
- **Aspect Control:** adjusts the aspect ratio to "Full" or "4:3".
- **Information:** shows the monitor information.
- **All Reset:** "Yes" allows you to restore the default setting.



3.2 Specifications summary (VK246)

Panel Type	TFT LCD
Panel size	24" (16:9) wide screen
Max. Resolution	Full HD 1920 x 1080
Pixel pitch	0.277mm
Brightness (Typ.)	240cd/m ²
Brightness (Max.)	300cd/m ²
Contrast Ratio (Typ.)	1000:1
Contrast Ratio (Max.)	20000:1 (with ASCR ON)
Viewing angle(H/V) CR>10	170°/160°
Display colors	16.7M
Response time	2ms (Gray to Gray)
Built-in webcam	1.3 mega-pixels
SPLENDID™ Video Enhancement	Yes
SPLENDID™ selection	5 video preset modes (by hotkey)
Auto adjustment	Yes (by hotkey)
Color temperature selection	5 color temperatures
Skin-Tone selection	3 skin-tones
HDMI input	HDMI (VK246H)
Digital input	DVI-D with HDCP (VK246H/U)
Analog input	D-Sub
Audio-in port	3.5 mm Mini-jack
Earphone Jack	3.5 mm Mini-jack
Colors	Black
Speaker (Built-in)	2W x 2 Stereo, RMS
Power LED	Blue (On)/ Amber (Standby)
VESA wall mount	100 x 100mm
Tilt	-3°~20°
Kensington lock	Yes
Voltage rating	AC: 100~240V
Power consumption	Power On : < 49W, Standby: < 2W, Power Off: <1W
Dimension (W x H x D)	568 mm x 422 mm x 230 mm (machine) 645 mm x 477 mm x 186 mm (package)
Weight (Esti.)	5.5 kg (Net) ; 8 kg (Gross)
Temperature (Operating)	0°C~40°C
Temperature (Non-operating)	-20°C~60°C
Humidity (Operating)	10%~90%
Humidity (Non-operating)	5%~90%
Multi-languages	10 languages (English, German, Italian, French, Dutch, Spanish, Russian, Traditional Chinese, Simplified Chinese, Japanese)
Accessories	VGA cable, DVI cable, audio cable, USB cable, power cord, quick start guide, warranty card
Regulation approvals	Energy Star®, CB, CE, Gost-R, CCC, UL/cUL, FCC, Vista Premium (VK246H/U), Vista Basic (VK246S), C-Tick, BSMI, VCCI, RoHS, WEEE, PSB






*Specifications are subject to change without notice.

Specifications summary (VW264)

Panel Type	TFT LCD
Panel size	24" (16:9) wide screen
Max. Resolution	Full HD 1920 x 1080
Pixel pitch	0.277mm
Brightness (Typ.)	240cd/m ²
Brightness (Max.)	300cd/m ²
Contrast Ratio (Typ.)	1000:1
Contrast Ratio (Max.)	20000:1 (with ASCR ON)
Viewing angle(H/V) CR>10	170°/160°
Display colors	16.7M
Response time	2ms (Gray to Gray)
SPLENDID™ Video Enhancement	Yes
SPLENDID™ selection	5 video preset modes (by hotkey)
Auto adjustment	Yes (by hotkey)
Color temperature selection	5 color temperatures
Skin-Tone selection	3 skin-tones
HDMI input	HDMI (VW246H)
Digital input	DVI-D with HDCP (VW246H/U)
Analog input	D-Sub
Audio-in port	3.5 mm Mini-jack
Earphone Jack	3.5 mm Mini-jack
Colors	Black
Speaker (Built-in)	2W x 2 Stereo, RMS
Power LED	Blue (On)/ Amber (Standby)
VESA wall mount	100 x 100mm
Tilt	-3°~20°
Kensington lock	Yes
Voltage rating	AC: 100~240V
Power consumption	Power On : < 49W, Standby: < 2W, Power Off: <1W
Dimension (W x H x D)	568 mm x 410 mm x 230 mm (machine) 645 mm x 477 mm x 186 mm (package)
Weight (Esti.)	5.5 kg (Net); 8 kg (Gross)
Temperature (Operating)	0°C~40°C
Temperature (Non-operating)	-20°C~60°C
Humidity (Operating)	10%~90%
Humidity (Non-operating)	5%~90%
Multi-languages	10 languages (English, German, Italian, French, Dutch, Spanish, Russian, Traditional Chinese, Simplified Chinese, Japanese)
Accessories	VGA cable, DVI cable, audio cable, power cord, quick start guide, warranty card
Regulation approvals	Energy Star®, CB, CE, Gost-R, CCC, UL/cUL, FCC, Vista Premium (VW246H/U), Vista Basic (VW246S), C-Tick, BSMI, VCCI, RoHS, WEEE, PSB

*Specifications are subject to change without notice.

3.3 Troubleshooting (FAQ)

Problem	Possible Solution
Power LED is not ON	<ul style="list-style-type: none"> • Press the  button to check if the monitor is in the ON mode. • Check if the power cord is properly connected to the monitor and the power outlet.
The power LED lights amber and there is no screen image	<ul style="list-style-type: none"> • Check if the monitor and the computer are in the ON mode. • Make sure the signal cable is properly connected the monitor and the computer. • Inspect the signal cable and make sure none of the pins are bent. • Connect the computer with another available monitor to check if the computer is properly working.
Screen image is too light or dark	<ul style="list-style-type: none"> • Adjust the Contrast and Brightness settings via OSD.
Screen image is not centered or sized properly	<ul style="list-style-type: none"> • Press the  /  button for 2–3 seconds to automatically adjust the image (VGA input only). • Adjust the H-Position or V-Position settings via OSD (VGA input only).
Screen image bounces or a wave pattern is present in the image	<ul style="list-style-type: none"> • Make sure the signal cable is properly connected to the monitor and the computer. • Move away electrical devices that may cause electrical interference.
Screen image has color defects (white does not look white)	<ul style="list-style-type: none"> • Inspect the signal cable and make sure that none of the pins are bent. • Perform All Reset via OSD. • Adjust the R/G/B color settings or select the Color Temperature via OSD.
Screen image is blurry or fuzzy	<ul style="list-style-type: none"> • Press the  /  button for 2–3 seconds to automatically adjust the image (VGA input only). • Adjust the Phase and Clock settings via OSD (VGA input only).
No sound or sound is low (for models with speakers)	<ul style="list-style-type: none"> • Ensure that the audio cable is properly connected to the monitor and the computer • Adjust the volume settings of both your monitor and computer. • Ensure that the computer sound card driver is properly installed and activated.
Webcam is not working	<ul style="list-style-type: none"> • Make sure that you have connected the USB cable securely to both the LCD monitor and your computer. • Make sure that you use the Microsoft® Windows® Vista / XP Service Pack 2 (3) operating systems.

3.4 Supported operating modes

Standard	Resolution Frequency	Vertical Frequency	Horizontal Frequency	Pixel
DOS	720 x 400	70Hz	31.47KHz	28.32MHz
VGA	640 x 480	60Hz	31.47KHz	25.18MHz
	640 x 480	72Hz	37.90KHz	31.50MHz
	640 x 480	75Hz	37.50KHz	31.50MHz
SVGA	800 x 600	56Hz	35.16KHz	36.00MHz
	800 x 600	60Hz	37.90KHz	40.00MHz
	800 x 600	72Hz	48.10KHz	50.00MHz
	800 x 600	75Hz	46.90KHz	49.50MHz
WVGA	848 x 480	60Hz	31.02KHz	33.75MHz
XGA	1024 x 768	60Hz	48.40KHz	65.00MHz
	1024 x 768	70Hz	56.50KHz	75.00MHz
	1024 x 768	75Hz	60.02KHz	78.75MHz
XGA+	1152 x 864	75Hz	67.50KHz	108.00MHz
WXGA	1280 x 800	60Hz	49.62KHz	83.375MHz
	1280 x 720	60Hz	44.69KHz	74.375MHz
	1280 x 768	60Hz	47.78KHz	79.50MHz
	1280 x 768	75Hz	60.29KHz	102.25MHz
QVGA	1280 x 960	60Hz	60.00KHz	108.00MHz
SXGA	1280 x 1024	60Hz	64.00KHz	108.00MHz
	1280 x 1024	75Hz	80.00KHz	135.00MHz
WXGA	1366 x 768	60Hz	47.71KHz	85.50MHz
WXGA+	1440 x 900	60Hz	55.94KHz	106.00MHz
UXGA	1600 x 1200	60Hz	75KHz	162.00MHz
	1600 x 1200	65Hz	81.25KHz	175.5MHz
	1600 x 1200	70Hz	87.5KHz	189.00MHz
	1600 x 1200	75Hz	93.75KHz	202.5MHz
WSXGA+	1680 x 1050	60Hz	65.29KHz	146.25MHz
	1680 x 1050	75Hz	82.30KHz	187MHz
Full HD (Primary)	1920 x 1080	60Hz	74.03KHz	154MHz

* Modes not listed in the table may not be supported. For optimal resolution, we recommend that you choose a mode listed in the table above.

* This monitor supports Full HD (480i/p, 576i/p, 720p, 1080i/p) video contents from game consoles, DVD players and other consumer video devices.

Free Manuals Download Website

<http://myh66.com>

<http://usermanuals.us>

<http://www.somanuals.com>

<http://www.4manuals.cc>

<http://www.manual-lib.com>

<http://www.404manual.com>

<http://www.luxmanual.com>

<http://aubethermostatmanual.com>

Golf course search by state

<http://golfingnear.com>

Email search by domain

<http://emailbydomain.com>

Auto manuals search

<http://auto.somanuals.com>

TV manuals search

<http://tv.somanuals.com>